

CITY OF WICHITA, KANSAS

THIRTEENTH STREET
☪ GOVERNEOUR TO 615[±] W. ☪ ROCK ROAD

PHASE II

**SIDEWALK CONSTRUCTION - SOUTH
SIDE THIRTEENTH STREET.**

PROJECT NO. 472 - 76 - 245 - 81385 - 000 - 000 - 001

M.E. LINDEBAK CITY ENGINEER

GENERAL NOTES

- TREES TO BE REMOVED ARE SHOWN ON THE PLANS. ANY TREES OR SHRUBS SHOWN TO BE REMOVED, WHICH IN THE OPINION OF THE ENGINEER CAN BE SAVED, SHALL BE SAVED. PAYMENT FOR TREE REMOVAL SHALL BE IN ACCORDANCE WITH THE CITY OF WICHITA STANDARD SPECIFICATIONS FOR ASPHALT PAVEMENT. SOME TREES WITHIN THE CONSTRUCTION LIMITS ARE TO BE REMOVED BY OTHERS IN CONJUNCTION WITH S.C.D.P.W. PROJ. NO. 831-NO. 1/2 0.
- SAW CUTS NECESSARY TO REMOVE EXISTING PAVEMENT, CURB & GUTTER, WALK, DRIVES, ETC. SHALL BE PAID PER LINEAL FOOT OF "SAW JOINT".
- THE CONTRACTOR SHALL BE RESPONSIBLE FOR PRESERVING PROPERTY IRONS. THE CONTRACTOR SHALL BE REQUIRED TO RE-ESTABLISH ANY PROPERTY IRONS WHICH ARE DAMAGED OR DESTROYED BY HIS CONSTRUCTION OPERATIONS. SUCH IRONS SHALL BE RE-ESTABLISHED BY A LICENSED LAND SURVEYOR OR A LICENSED PROFESSIONAL ENGINEER IN ACCORDANCE WITH APPLICABLE STATE LAWS.
- UTILITIES: EXISTING UTILITIES AND THEIR LOCATIONS, AS SHOWN ON THE PLANS, REPRESENT THE BEST INFORMATION OBTAINABLE FOR DESIGN. LOCATION INFORMATION HAS BEEN OBTAINED FROM THE VARIOUS UTILITY COMPANIES AND IS EITHER FROM COMPANY RECORD DRAWINGS OR COMPANY PROVIDED FIELD LOCATIONS. THE PLAN LOCATIONS SHOWN ARE NOT GUARANTEED. ADDITIONAL EXISTING UTILITIES MAY ALSO BE ENCOUNTERED.
- PRIVATE UTILITY SERVICE LINES, POLES, VALVE BOXES, METERS, ETC. ARE TO BE ADJUSTED BY OTHERS UNLESS THE PLANS CALL FOR THEIR ADJUSTMENT BY THE CONTRACTOR. THE CONTRACTOR WILL BE REQUIRED TO WORK AROUND EXISTING UTILITIES WHICH DO NOT CONFLICT WITH PROPOSED CONSTRUCTION.
- THE CONTRACTOR SHALL NOTIFY THE FOLLOWING UTILITY COMPANIES AT LEAST TWENTY-FOUR(24) HOURS IN ADVANCE OF COMMENCEMENT OF WORK AND SHOULD REQUEST THAT ANY EXISTING LINES BE FLAGGED:

WICHITA WATER DEPARTMENT 455 N. MAIN WICHITA, KS 67202 MR. BILL OTTEN 268-4217	KANSAS GAS & ELECTRIC CO. 1900 E. CENTRAL WICHITA, KS 67214 MR. BOB BLEVINS 261-6421	MULTIMEDIA CABLEVISION 804 N. MAIN WICHITA, KS 67202 MR. DON SHUE 269-2335
SOUTHWESTERN BELL TEL. CO. 154 N. BROADWAY WICHITA, KS 67202 MR. DAN CLEVELINGER 268-2895	GAS SERVICE CO. 1021 E. 26TH ST. N. WICHITA, KS 67219 MR. GENE CURLESS 263-7511 (EXT. 311)	SEWER MAINT. DIVISION 455 N. MAIN WICHITA, KS 67202 MR. DARRELL BREWER 268-4210
- ALL STORM SEWER INSTALLED ON THIS PROJECT SHALL BE REINFORCED CONCRETE PIPE OR REINFORCED CONCRETE PIPE (HORIZONTAL ELLIPTICAL).
- CONNECTION OF EXISTING STORM SEWERS TO PROPOSED CONDUITS, INCLUDING ALL MATERIALS, EQUIPMENT, LABOR, CONCRETE COLLARS (IF REQUIRED) AND INCIDENTALS, SHALL NOT BE PAID FOR DIRECTLY, BUT SHALL BE CONSIDERED SUBSIDIARY TO THE VARIOUS PROPOSED CONDUITS AND STRUCTURES.
- THE ENTRANCE PIPE SHOWN FOR THE TEMPORARY DRIVE LT. STA. 41+70, IF REQUIRED, MAY BE EITHER REINFORCED CONCRETE OR CORRUGATED METAL. UPON ERADICATION OF THE DRIVE, THE ENTRANCE PIPE SHALL BECOME THE PROPERTY OF THE CONTRACTOR AND SHALL BE REMOVED FROM THE SITE. THIS ITEM SHALL BE PAID FOR AT THE CONTRACT UNIT PRICE PER LINEAL FOOT FOR "15-IN. ENTRANCE PIPE", WHICH PRICE SHALL BE FULL COMPENSATION FOR ALL MATERIALS, INSTALLATION, LABOR, EXCAVATION, BACKFILL, REMOVAL, DISPOSAL, AND INCIDENTALS NECESSARY TO COMPLETE THE WORK.
- REMOVAL OF THE EXISTING ENTRANCE LT. STA. 40+66.47 SHALL BE PAID FOR AT THE CONTRACT UNIT PRICE PER SQUARE YARD FOR "PAVEMENT REMOVED". REMOVAL OF ALL CURB AND GUTTER AS SHOWN ON THE PLANS SHALL BE PAID FOR AT THE CONTRACT UNIT PRICE PER SQUARE YARD FOR "PAVEMENT REMOVED" WHETHER OR NOT THE ADJOINING PAVEMENT IS REMOVED. SAID CONTRACT UNIT PRICE SHALL BE FULL COMPENSATION FOR THE REMOVAL AND DISPOSAL, AND ALL LABOR, TOOLS, MATERIALS, EQUIPMENT, AND INCIDENTALS NECESSARY TO COMPLETE THE WORK.
- ALL DISTURBED AREAS WITHIN THE CONSTRUCTION LIMITS AS SHOWN ON THE PLANS SHALL BE SEEDED, FERTILIZED, AND MULCHED IN CONFORMANCE WITH THE REQUIREMENTS FOR "FERTILIZING AND SEEDING" AND FOR "MULCHING" AS SET FORTH IN THE CITY OF WICHITA STANDARD SPECIFICATIONS FOR SANITARY AND STORM SEWERS. THE AMOUNT OF COMPLETED AND ACCEPTED WORK SHALL BE "X" OR AT THE CONTRACT PRICE BID PER ACRE FOR "SEEDING, FERTILIZING, AND MULCHING" WHICH PRICE SHALL BE FULL COMPENSATION FOR FURNISHING AND PLACING ALL MATERIALS, FOR ALL LABOR, TOOLS, EQUIPMENT, AND INCIDENTALS NECESSARY TO COMPLETE THE WORK.

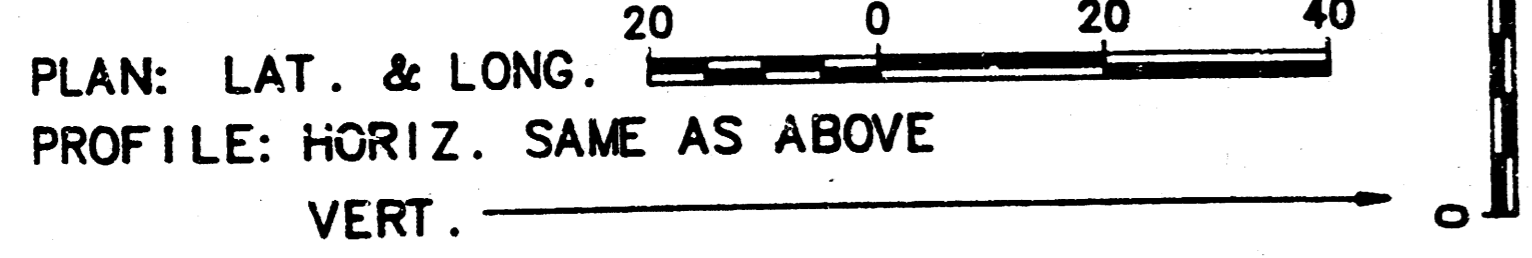
THE CONTRACTOR SHALL BID ONE SUBGRADE TREATMENT. THE ALTERNATE CHOSEN BY SUCCESSFUL BIDDER SHALL BE USED IN THE CONSTRUCTION OF THIS PROJECT.

LEGEND

- TREE REMOVAL
- PAVEMENT REMOVAL
- ASPHALT SURFACING
- REMOVE & REPLACE ASPHALT SURFACE

BEGIN 4.00' CONCRETE SIDEWALK CONSTRUCTION (4")

SCALE:



PROJECT SURVEY CONTROL:
VERTICAL CONTROL: CITY OF WICHITA DATUM

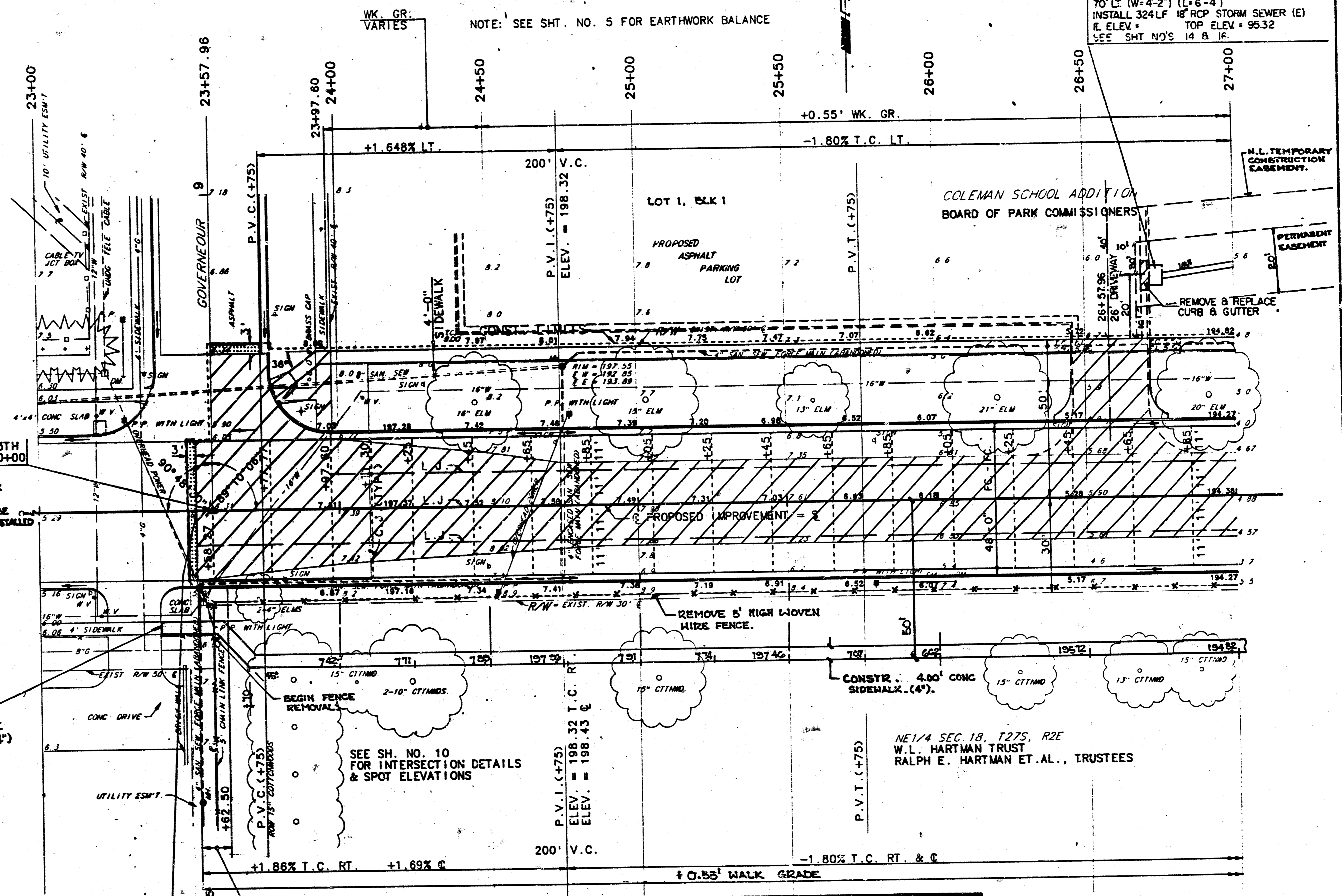
DATUM BENCH MARK:
B.M. #13 CHIS "X" @ TOP CURB E. SIDE MEDIAN @ ENTRANCE TO RAIN TREE VILLAGE STA 40+14; 90' LT., ELEV. = 199.44

B.M. #18 CHIS "X" @ NE END RETURN @ GRETCHEN & 13TH STA. 22+39; 24' RT. ELEV. = 195.00

P.O.T. 13TH ST. NORTH STA. 21+71.45
 1. NAIL & SHINER @ P.O.T.
 2. CHIS "X" ON TOP BOLT BETWEEN "MJE" & "LLER" ON TOP FIRE HYDRANT @ S.W. COR. GRETCHEN & 13TH 54.20' SE 51.94' SW
 3. CHIS "X" ON B/C @ NE COR. RETURN TO DRIVEWAY 30.08' NW
 4. NAIL & SHINER IN E FACE P.P.
 5. CHIS "X" IN N CURB 13TH @ W CURB LINE OF GRETCHEN EXTENDED 32.27' NE

P.I. 13TH ST. NORTH STA. 23+57.96=
 GOVERNEOUR STA. 50+00
 1. 3/4" I.P. IN THIMBLE @ P.I.
 2. CHIS "X" ON TOP OF CURB EAST SIDE OF GOVERNEOUR 49.91' N.E.
 3. CHIS "X" ON TOP OF CURB NORTH SIDE OF 13TH ST. 50.40' N.W.
 4. CHIS "X" ON TOP OF CURB SOUTH SIDE OF 13TH ST. 50.11' S.W.

STA. 26+73 CONST. TYPE I CURB INLET 70" (W:4'-2") (L:6'-4")
 INSTALL 324LF 18" RCP STORM SEWER (E)
 E. ELEV. = TOP ELEV. = 95.32
 SEE SHT NO'S 14 & 16



NOTE: THIS PROJECT PLAN IS FOR SIDEWALK CONSTRUCTION ON THE SOUTH SIDE OF 13TH STREET. OTHER INFORMATION SHOWN IS TO BE DISREGARDED.

— SIDEWALK TO BE CONSTRUCTED

UTILITIES

- | | |
|------------------|------------------------------|
| CABLE TELEVISION | CABLEVISION |
| GAS | GAS SERVICE CO. |
| POWER | K.G. & E. |
| TELEPHONE | SOUTHWESTERN BELL |
| SANITARY SEWER | WICHITA SANITARY SEWER DEPT. |
| WATER | WICHITA WATER DEPT. |

REVISED APRIL 23, 1983

Revision	By	Date
1	MB	4/23/83

13TH STREET NORTH STREET IMPROVEMENT PLAN STA. 21+00 TO STA. 27+00

PROJ. NO. 472-76-245-81385-000-000-001

PROFESSIONAL ENGINEERING CONSULTANTS, P.A.
 ENGINEERS
 WICHITA, KANSAS

Designed by MMB, GDS Job No. 83162
 Drawn by ydda Date NOV. 1983 Sht. 2 of 5

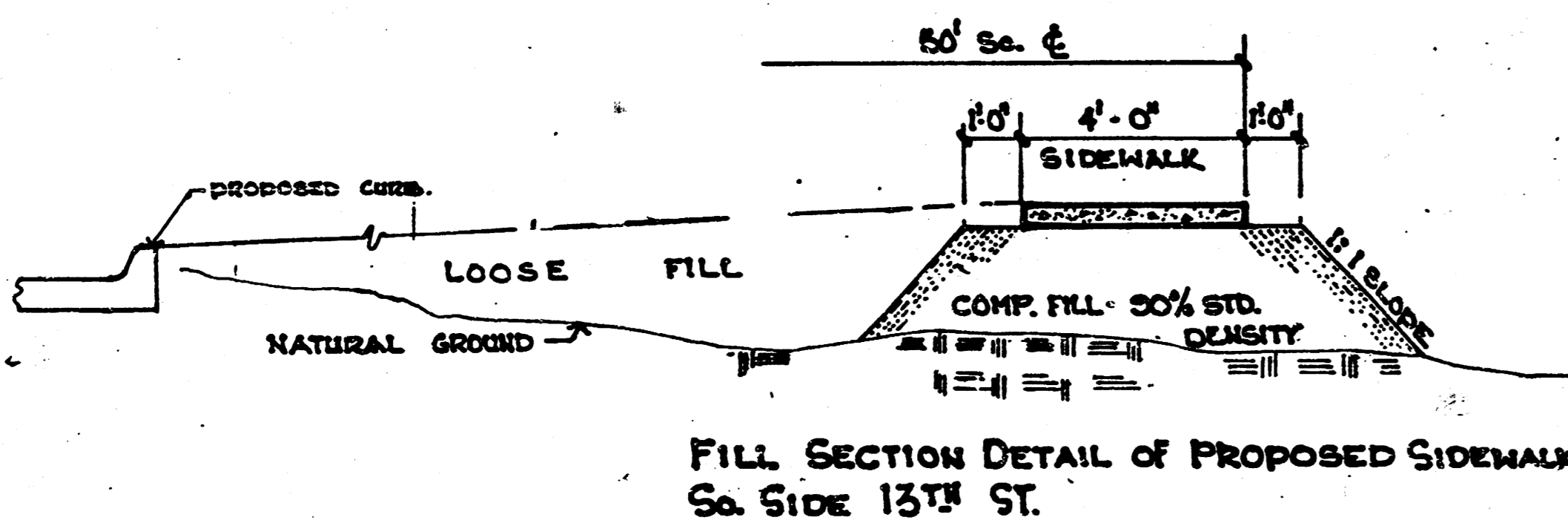
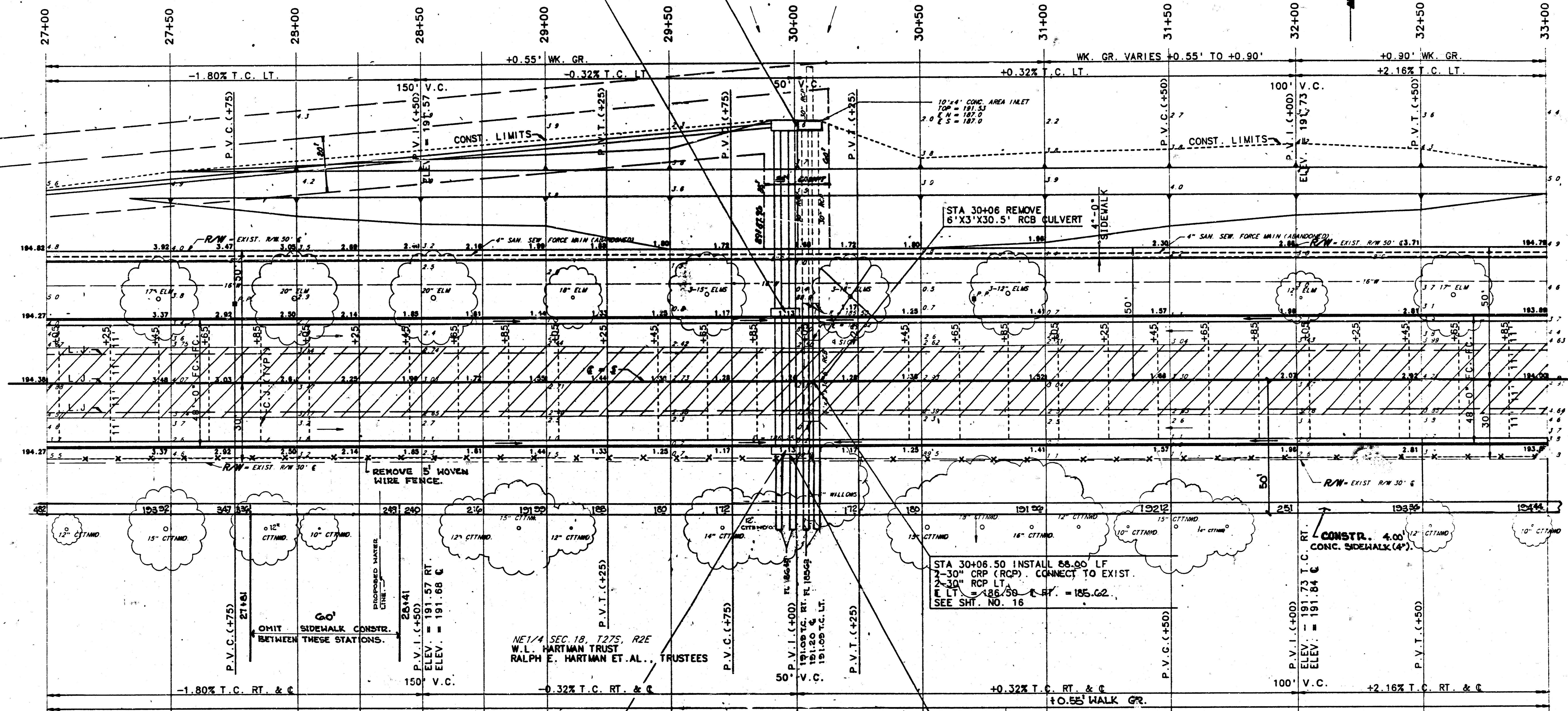
FILMED FROM THE BEST AVAILABLE COPY

COLEMAN SCHOOL ADDITION
BOARD OF PARK COMMISSIONERS

SEE SHT. NO. 5 FOR EARTHWORK BALANCE

STA 29+96 CONSTRUCT TYPE I CURB INLET
(TYPE I1) 26.00' LT (W=4'-2") (L=11'-0") (H=5'-3")
INSTALL 70.50 LF 30" RCP STORM SEWER (N)
AT STA 29+93.5
INSTALL 70.50 LF 30" RCP STORM SEWER (N)
AT STA 29+98.5
E IN (N) = 187.20 E OUT(S) = 186.84
TOP ELEV = 191.13
SEE SHT. NO. 'S 14 & 16

STA 30+01 CONSTRUCT AREA INLET
(TYPE I1) 96.3' LT
TOP ELEV = 191.53
E IN (N) = 187.20 E OUT(S) = 187.44
SEE SHT. NO. 'S 11 & 16



B.M. #16 R.R. SPIKE IN S. FACE P.P.
STA. 33+67; 30' LT. ELEV. = 196.92

STA 29+96 CONSTRUCT TYPE I CURB
INLET 26.00' RT (L=11'-0") (W=4'-2") (H=5'-6")
INSTALL 52.00 LF 30" RCP STORM SEWER (N)
AT STA 29+93.5
INSTALL 52.00 LF 30" RCP STORM SEWER (N)
AT STA 29+98.5
E IN (N) = 186.70 E OUT(S) = 186.60 TOP ELEV = 191.13
SEE SHT. NO. 'S 14 & 16 FL. 186.40 BEGIN PIPE N.

INSTALL 32.00 LF 30" RCP STORM SEWER (N)
AT STA 29+93.5
INSTALL 32.00 LF 30" RCP STORM SEWER (N)
AT STA 29+98.5
E (N) = 185.62
SEE SHT. NO. 'S 12 & 16

- UTILITIES:
- CABLE TELEVISION
 - GAS
 - POWER
 - SANITARY SEWER
 - WATER
 - CABLEVISION GAS SERVICE CO.
 - K.C. & E.
 - WICHITA SANITARY SEWER DEPT.
 - WICHITA WATER DEPT.

REVISED APRIL 23, 1985

1	SWS ADDED	COM 6-7-84
2	REVISION	BY DATE
13TH STREET NORTH STREET IMPROVEMENT PLAN STA. 27+00 TO STA. 33+00		
PROJ. NO. 472-76-245-81385-000-000-001		
PROFESSIONAL ENGINEERING CONSULTANTS, P.A.		
ENGINEERS WICHITA, KANSAS		
Designed by	MWB, GDS	Job No. 83162
Drawn by	yoda	Date JULY 1984
		3 of 5

FILMED FROM THE BEST AVAILABLE COPY

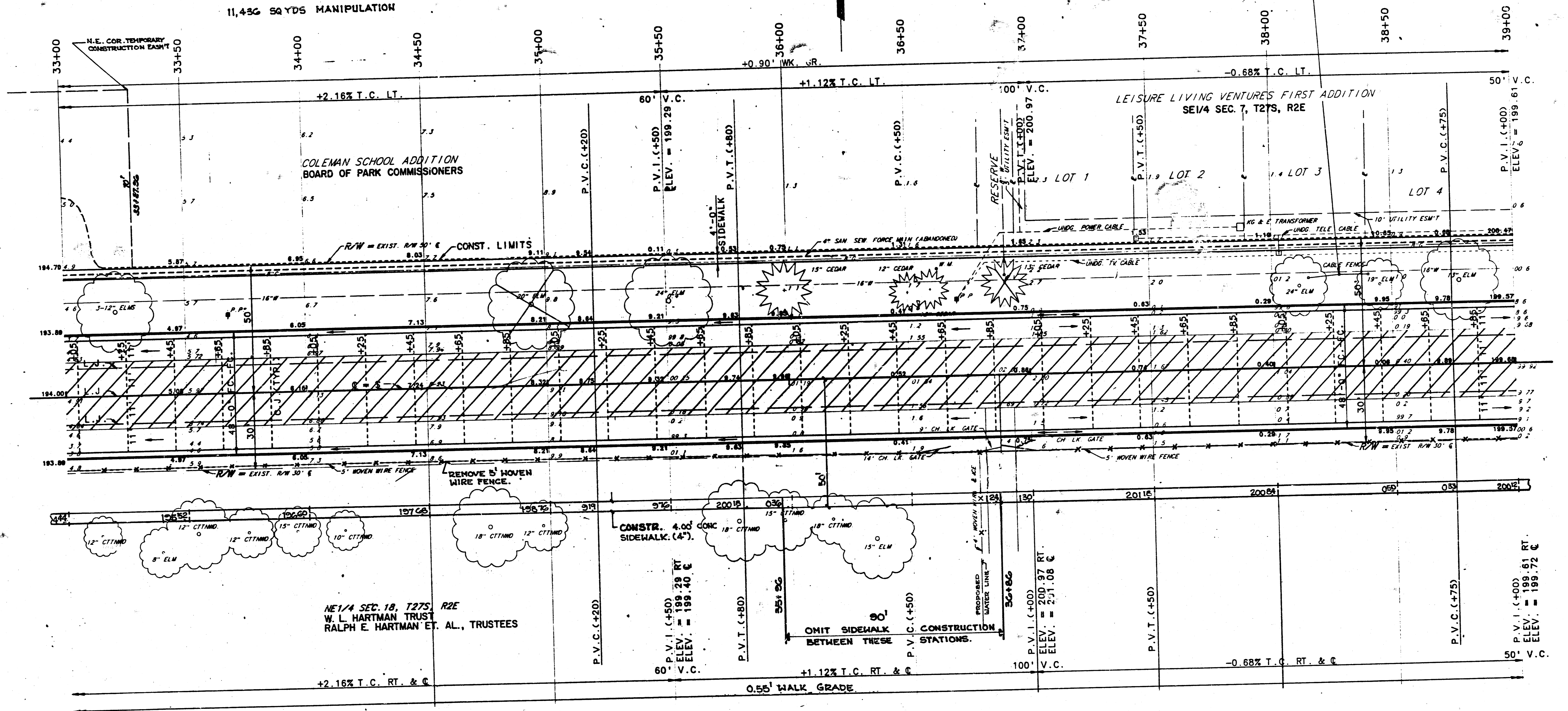
EARTHWORK BALANCE (FOR INFORMATION ONLY)

- + 5,150 C.Y. EXCAVATION (VMF = 0.80) — 902.7 C.Y. ADDITIONAL. So. PARKING. No. %.
- * 721 C.Y. EMBANKMENT
- * INCLUDES 4,249 C.Y. TO BE WASTED ON A SITE TO BE APPROVED BY THE ENGINEER.
- * INCLUDES 7 C.Y. MANIPULATED FILL
- 242 C.Y. LOOSE FILL
- 472 C.Y. COMPACTED FILL OF WHICH — 112.7 C.Y. ADDITIONAL. So. PARKING. No. %.
- 433 C.Y. ARE FOR BERM LT.
- STA. 27+38 TO STA. 33+00.

11,436 SQYDS MANIPULATION

- P.O.T. 13TH ST. NORTH STA. 36+78.85
1. P.K. NAIL @ P.O.T.
 2. CONC. NAIL & SHINER IN W. FACE 12" CEDAR 1.5' ABOVE GROUND
 3. CONC. NAIL & SHINER IN SW FACE 12" CEDAR 1.5' ABOVE GROUND
 4. CHIS "+" IN WEST FACE 2" STEEL FENCE COR. POST P.I. E-W & S
- 37.79' NE
44.61' NW
37.37' S

STA. 38+15 TO STA. 38+40
REMOVE 25' L.F. CABLE FENCE LT.



B.M. 515 R.R. SPIKE IN NW FACE P.P. N OF 13TH
1/4 MILE W OF ROCK. STA. 36+70; 30' LT. ELEV. = 202.36

UTILITIES

- CABLE TELEVISION
 - GAS
 - POWER
 - TELEPHONE
 - SANITARY SEWER
 - WATER
- CABLEVISION
GAS SERVICE CO.
K.C. & E.
SOUTHWESTERN BELL
WICHITA SANITARY SEWER DEPT.
WICHITA WATER DEPT.

REVISED APRIL 25, 1965

No.	Revision	By	Date
13TH STREET NORTH STREET IMPROVEMENT PLAN STA. 33+00 TO STA. 39+00 PROJ. NO. 472-76-245-81385-000-000-001 PROFESSIONAL ENGINEERING CONSULTANTS. P.A. # ENGINEERS WICHITA, KANSAS			
Designed by	MWB_GDS	Job No.	83162
Drawn by	yoda	Date	NOV. 1953
			Sheet 4 of 5

FILMED FROM THE BEST AVAILABLE COPY

SEE SHT. NO. 5 FOR EARTHWORK BALANCE

S.R. STA. 10+56 CONST.
TYPE 1A CURB INLET 28.08' LT. (W=4'-2")
INSTALL 4 L.F. 15" R.C.P.
STORM SEWER (ND)
TOP ELEV. = 199.37
E INK(N) = 196.06 E OUT(E) = 195.81
SEE SHT. NO. 'S 13 & 16

S.R. STA. 10+64.35 CONST.
TYPE 1A CURB INLET 28.08' RT. (W=4'-2")
TOP ELEV. = 199.40 E OUT(S) = 196.11
SEE SHT. NO. 'S 13 & 16

S.R. STA. 10+64.35 CONST.
TYPE 1A CURB INLET 28.08' RT. (W=4'-2")
TOP ELEV. = 198.92 E OUT(S) = 195.46
SEE SHT. NO. 'S 13 & 16

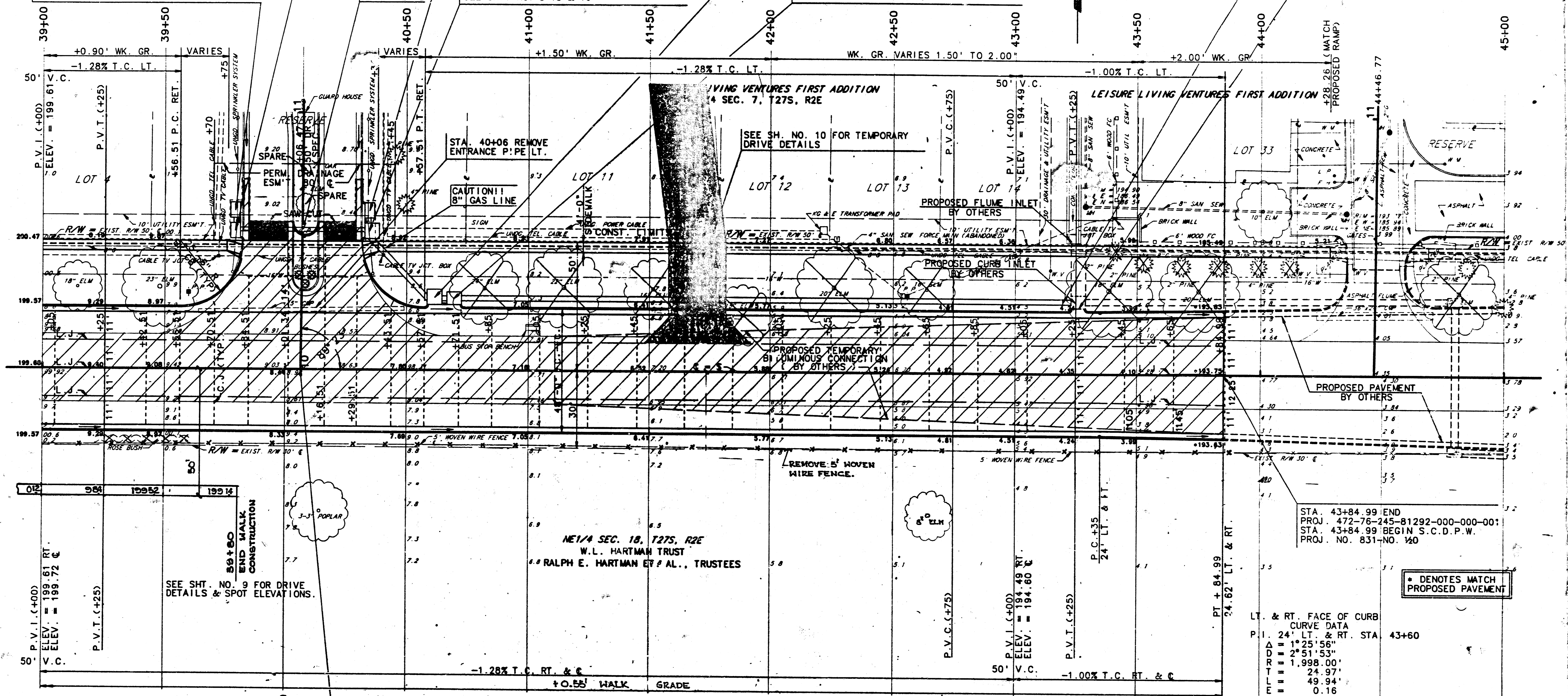
S.R. STA. 10+56 CONST.
TYPE 1A CURB INLET 29.00' RT. (W=6'-0")
INSTALL 57.08 L.F. 18" R.C.P.
STORM SEWER (ND)
INSTALL 4 L.F. 15" R.C.P.
STORM SEWER (ND)
TOP ELEV. = 198.69 E INK(W) = 195.48
E INK(N) = 195.48 E OUT(SE) = 195.38
SEE SHT. NO. 'S 13 & 16

STA. 40+61.65 CONST.
TYPE 1A CURB INLET 28.50' LT. (W=6'-0")
INSTALL 37.33 L.F. 30"x19" R.C.P.H.E.
STORM SEWER (ND)
TOP ELEV. = 197.54
E INK(NW) = 194.19 E OUT(E) = 193.52
SEE SHT. NO. 'S 13 & 16

STA. 40+70 CONST.
TYPE 1A CURB INLET 28.00' LT. (W=5'-0")
INSTALL 8.36 L.F. 24" R.C.P.
STORM SEWER (ND)
TOP ELEV. = 197.43
E INK(W) = 193.26 E OUT(E) = 193.01
SEE SHT. NO. 'S 13 & 16

STA. 43+19.50, 28.00' LT.
INSTALL 249.50 L.F. 24" R.C.P.
STORM SEWER (ND)
E INK(W) = 189.80
SEE SHT. NO. 16

STA. 43+26 CONSTRUCT
INLET HOOKUP LT.



SEE SHT. NO. 9 FOR DRIVE DETAILS & SPOT ELEVATIONS.

STA. 40+06.47 @ 13TH =
S.R. STA. 10+00 @ RAINTREE
ELEV. = 199.44

CURVE DATA BASED ON FACE OF CURB RADIUS $\Delta/2 = 0^\circ 42' 58''$

STATION	F.C. ARC LENGTH	CHORD LENGTH	FC DEFLECTION ANGLE	F.C. TOTAL DEFLECTION
43+35	-	-	0°00'00"	0°00'00"
43+50	14.99	14.93	0°12'53.55"	0°12'53.55"
43+75	24.97	24.87	0°21'29.26"	0°34'22.81"
43+84.99	9.98	9.94	0°08'35.19"	0°42'58"

UTILITIES

- CABLE TELEVISION
- GAS
- POWER
- TELEPHONE
- SANITARY SEWER
- WATER
- CABLEVISION GAS SERVICE CO. K.C. & E.
- SOUTHWESTERN BELL WICHITA SANITARY SEWER DEPT.
- WICHITA WATER DEPT.

LT. & RT. FACE OF CURB CURVE DATA
P.I. 24' LT. & RT. STA 43+60
 $\Delta = 1^\circ 25' 56''$
 $D = 2^\circ 51' 53''$
 $T = 1,998.00'$
 $R = 24.97'$
 $E = 49.94'$
 $F = 0.16$

REVISED APRIL 25, 1985

13TH STREET NORTH STREET IMPROVEMENT PLAN
STA. 39+00 TO STA. 45+00
PROJ. NO. 472-76-245-81385-000-000-001
PROFESSIONAL ENGINEERING CONSULTANTS, P.A.
ENGINEERS
WICHITA, KANSAS
Designed by MWB_GDS Job No. 83162
Drawn by yoda Date JUN. 1984

FILMED FROM THE BEST AVAILABLE COPY