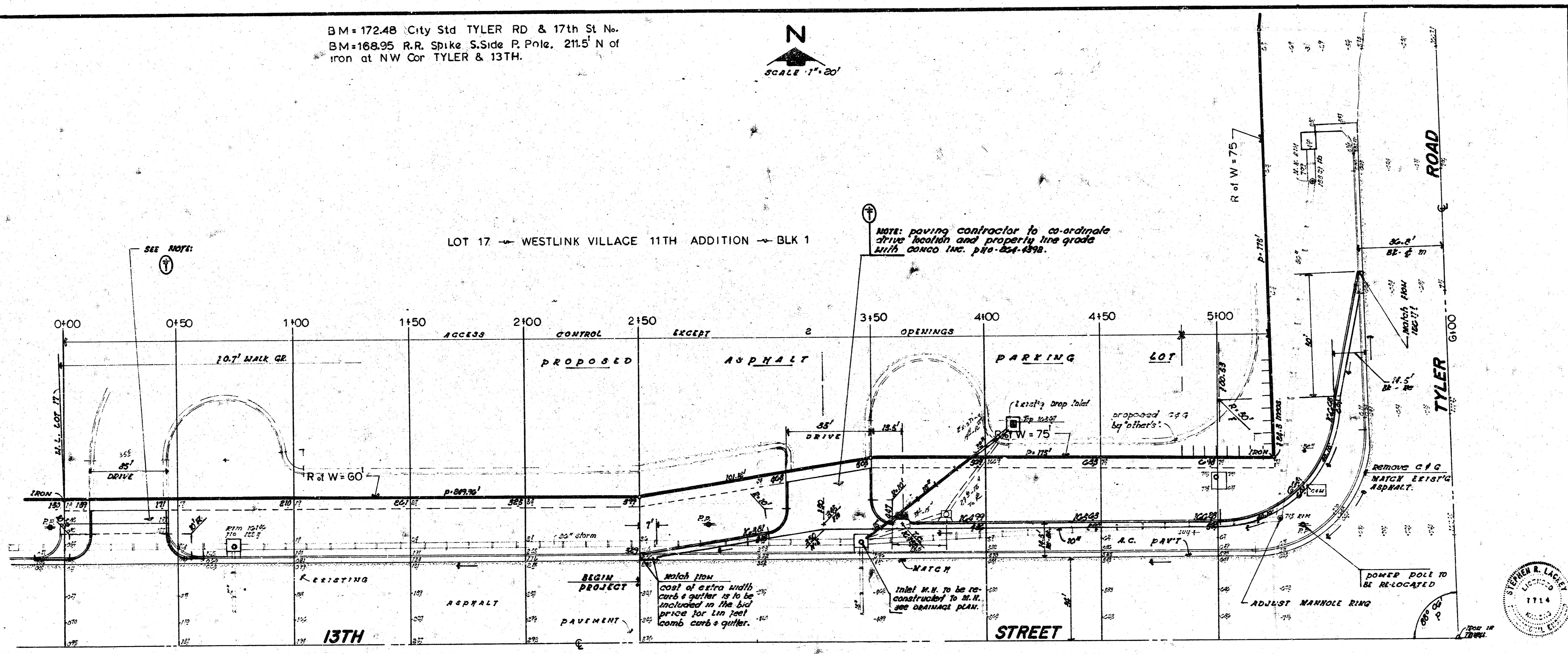


BM=172.48 City Std TYLER RD & 17th St No.
 BM=168.95 R.R. Spike S.Side P. Pole. 211.5' N of
 iron at NW Cor TYLER & 13TH.

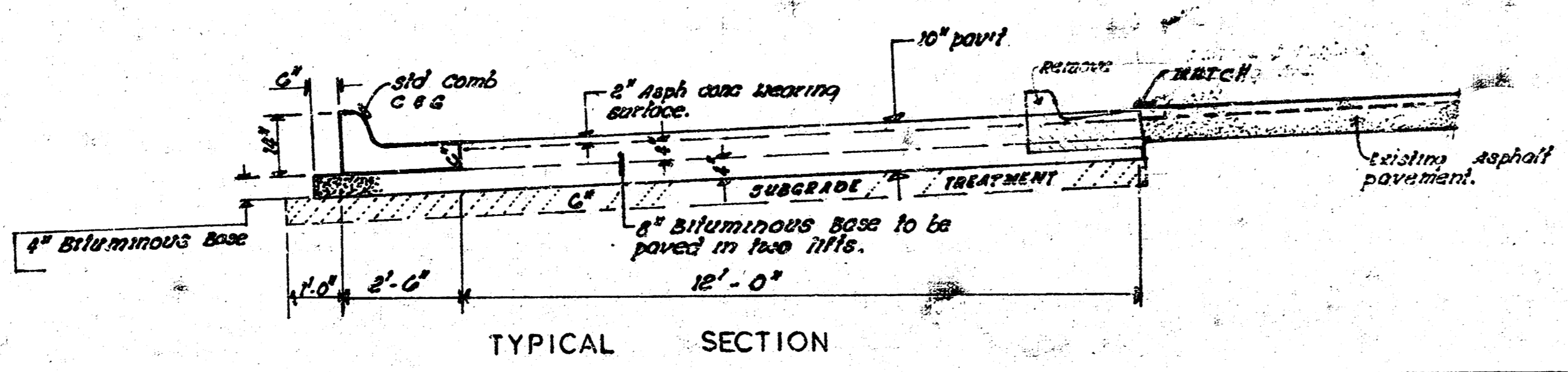


LOT 17 WESTLINK VILLAGE 11TH ADDITION BLK 1

NOTE: paving contractor to co-ordinate
 drive location and property line grade
 with CONCO INC. ph# 454-4398.

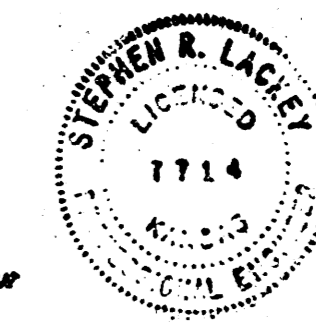


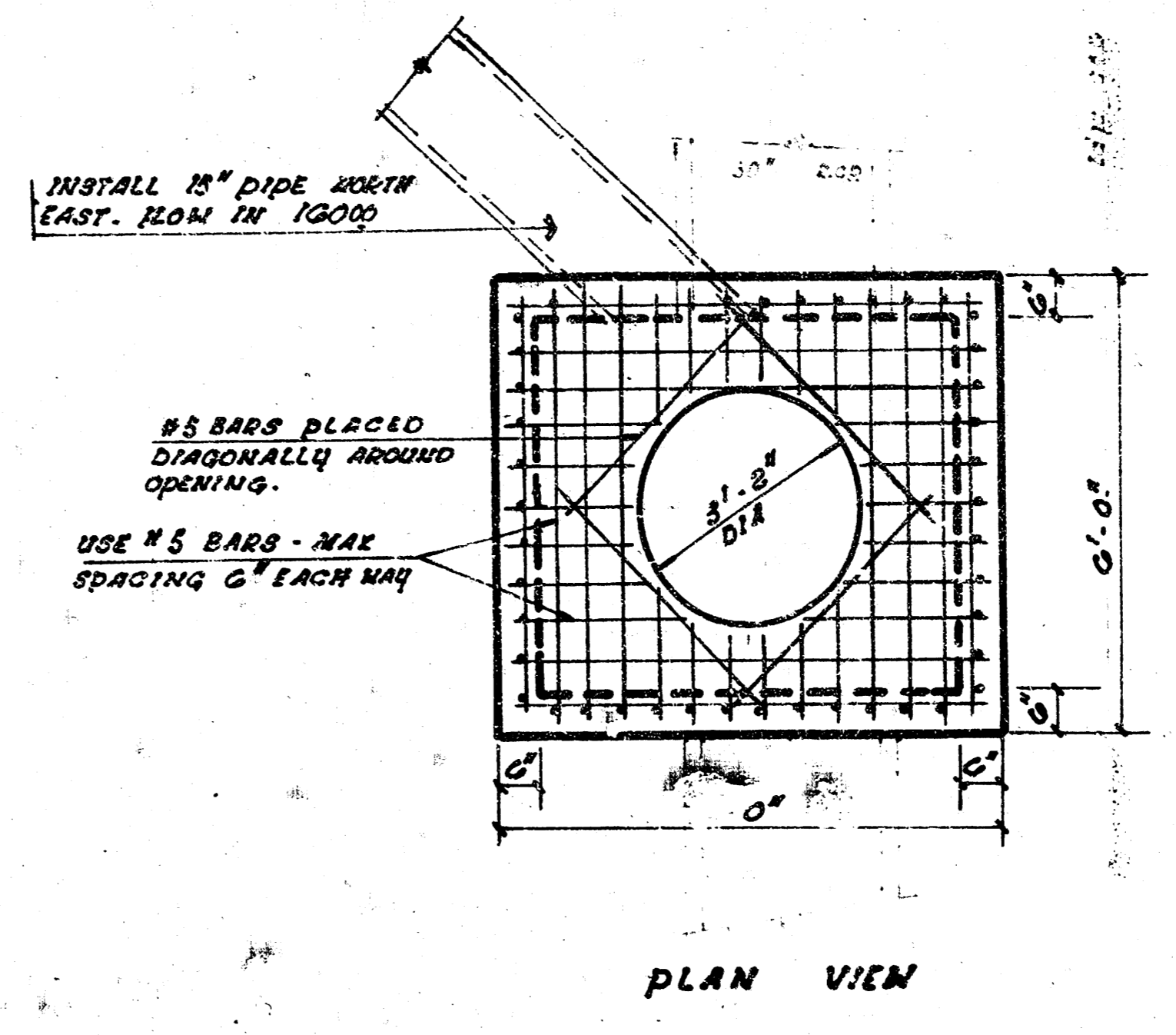
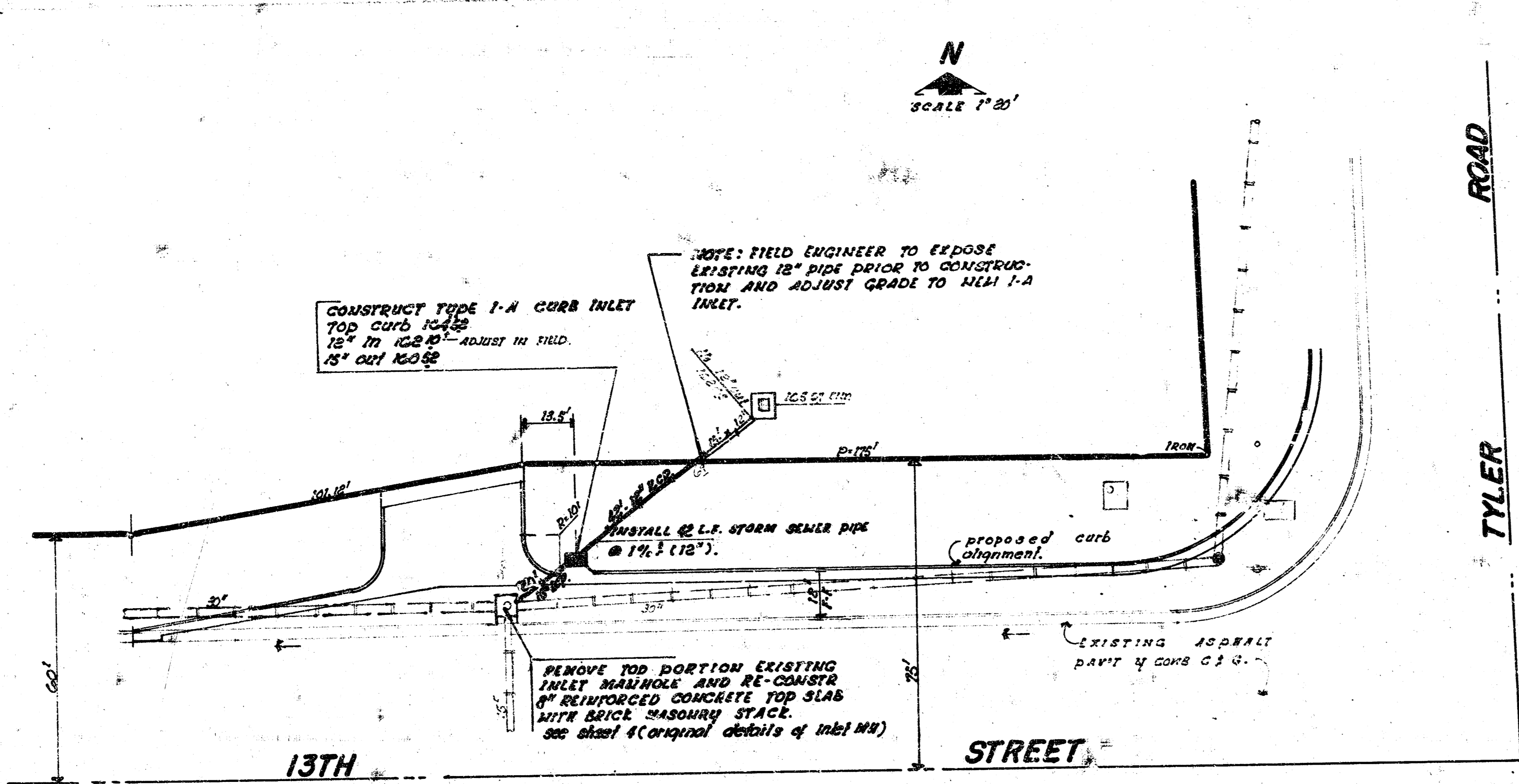
SHOWN DIMENSIONS
 Plan without
 Checkmark



EXCAVATION**
 422.1 cu yds
 10% 42.2 -
 380.3 cu yds

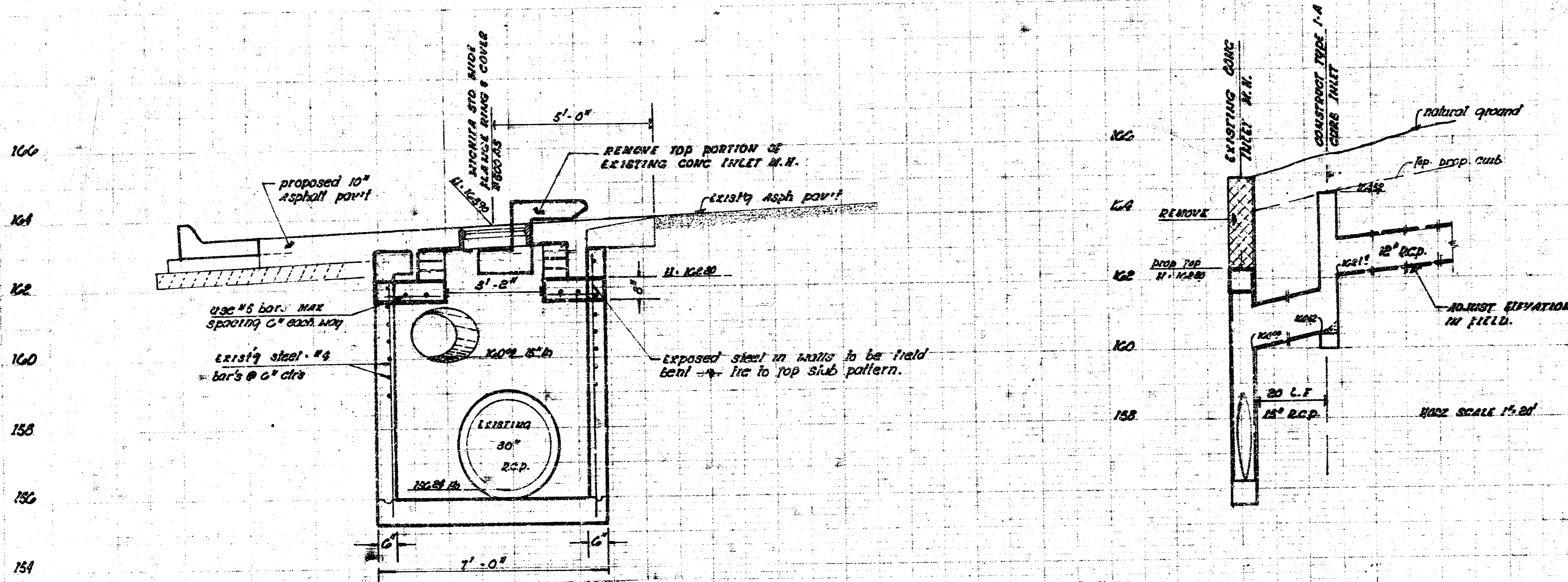
No. SIDE 13TH STREET
 W.L. LOT 17, BLK 1, WESTLINK VILLAGE
 11TH ADD. TO W.L. TYLER ROAD
CITY OF WICHITA, KANSAS
 ACCEL-DECEL LANE - 2" A.C. Wearing
 Surface, 8" Bituminous Base w/ Comb
 Curb & Gutter.
 DEAN SELLERS Acting City Engineer
 Date _____
 Proj No. 472-76-245-80888000-000-001





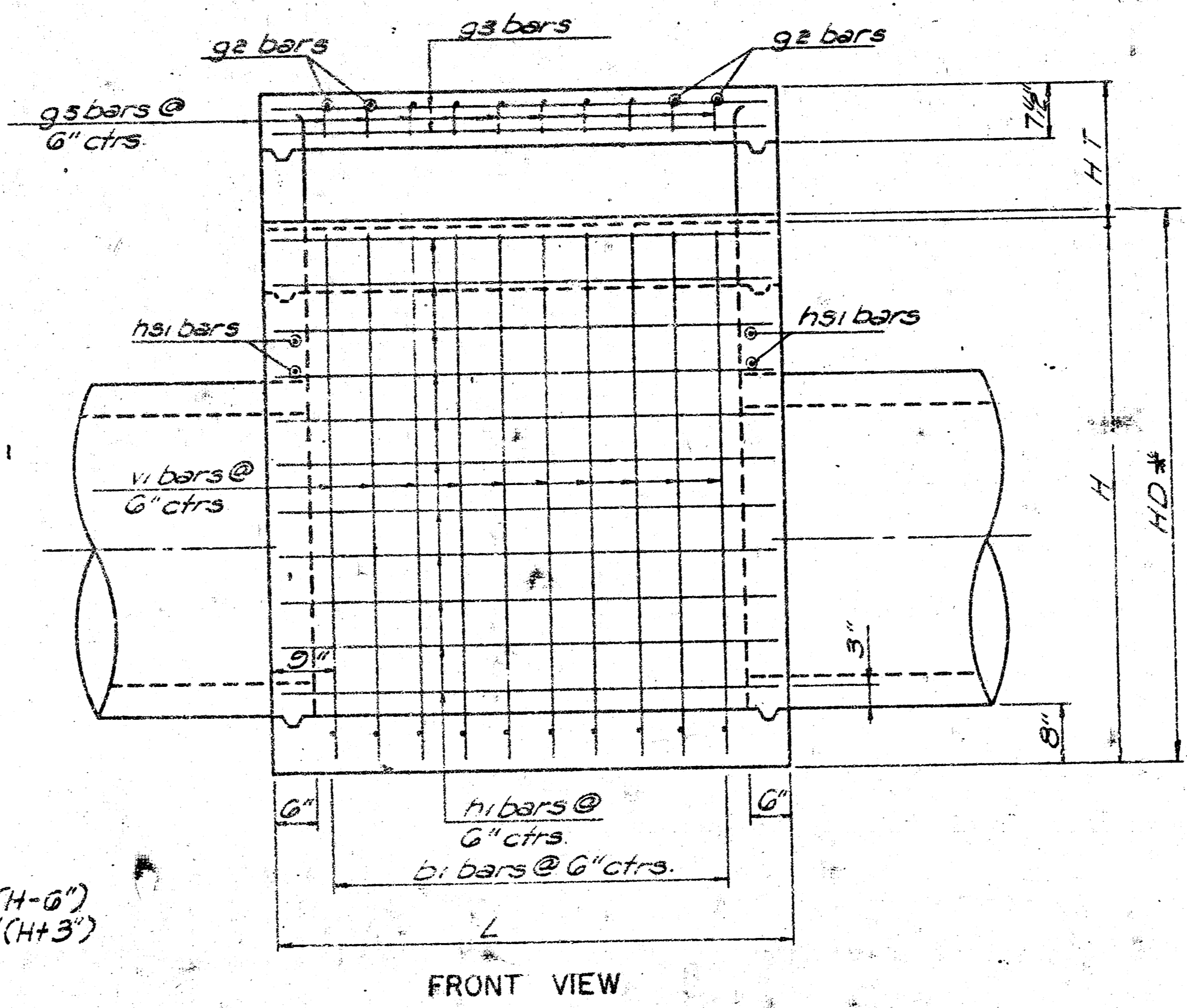
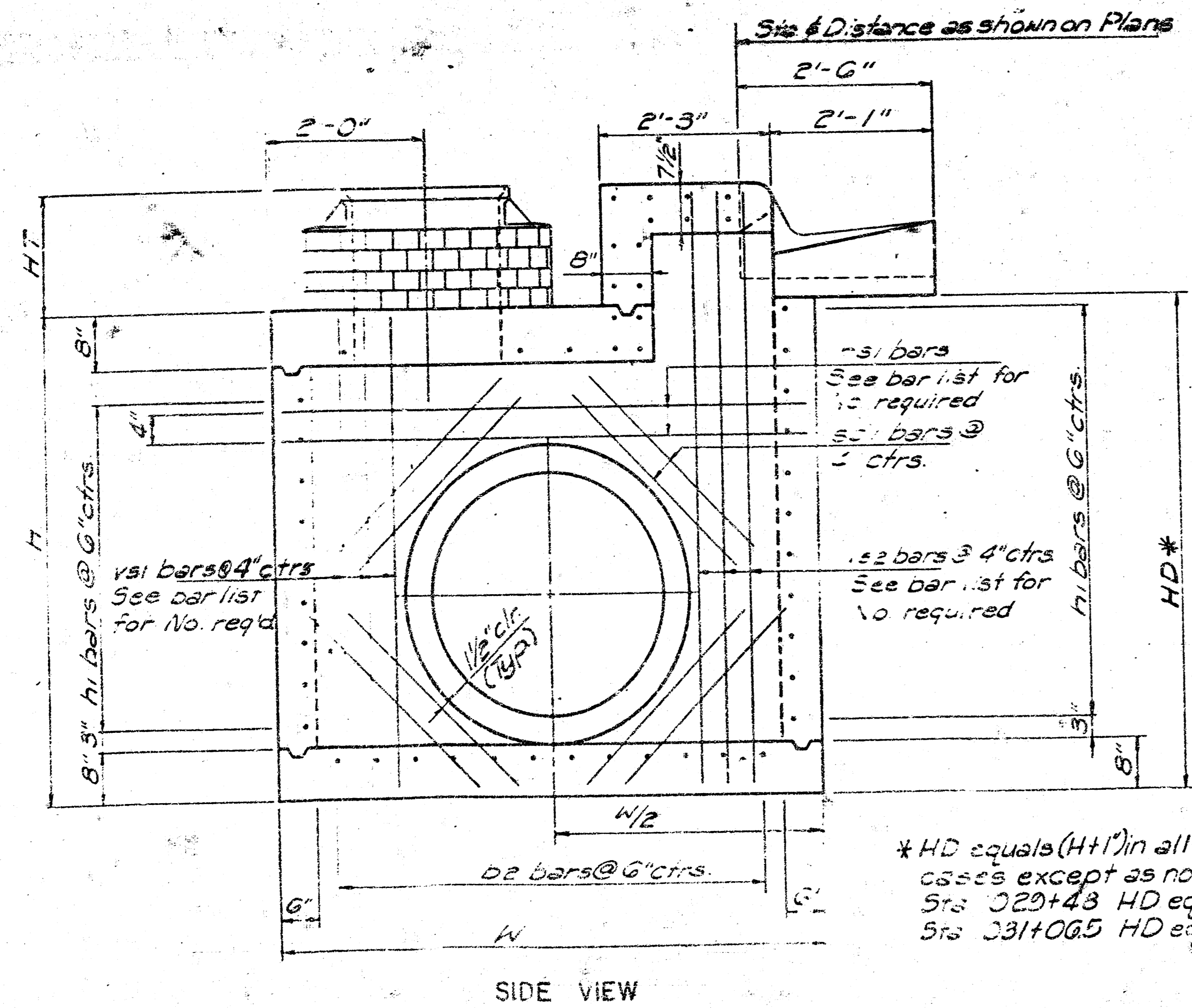
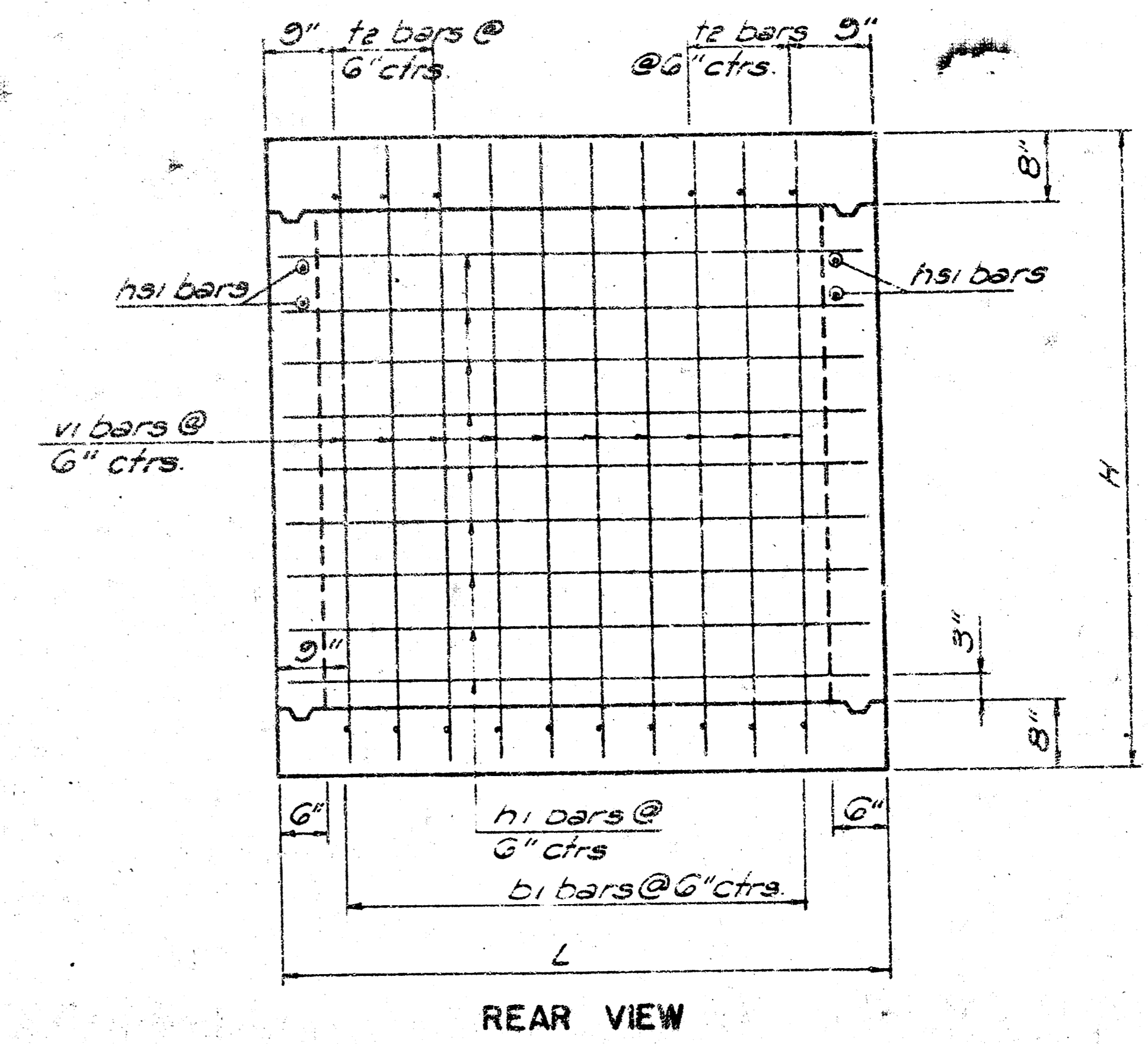
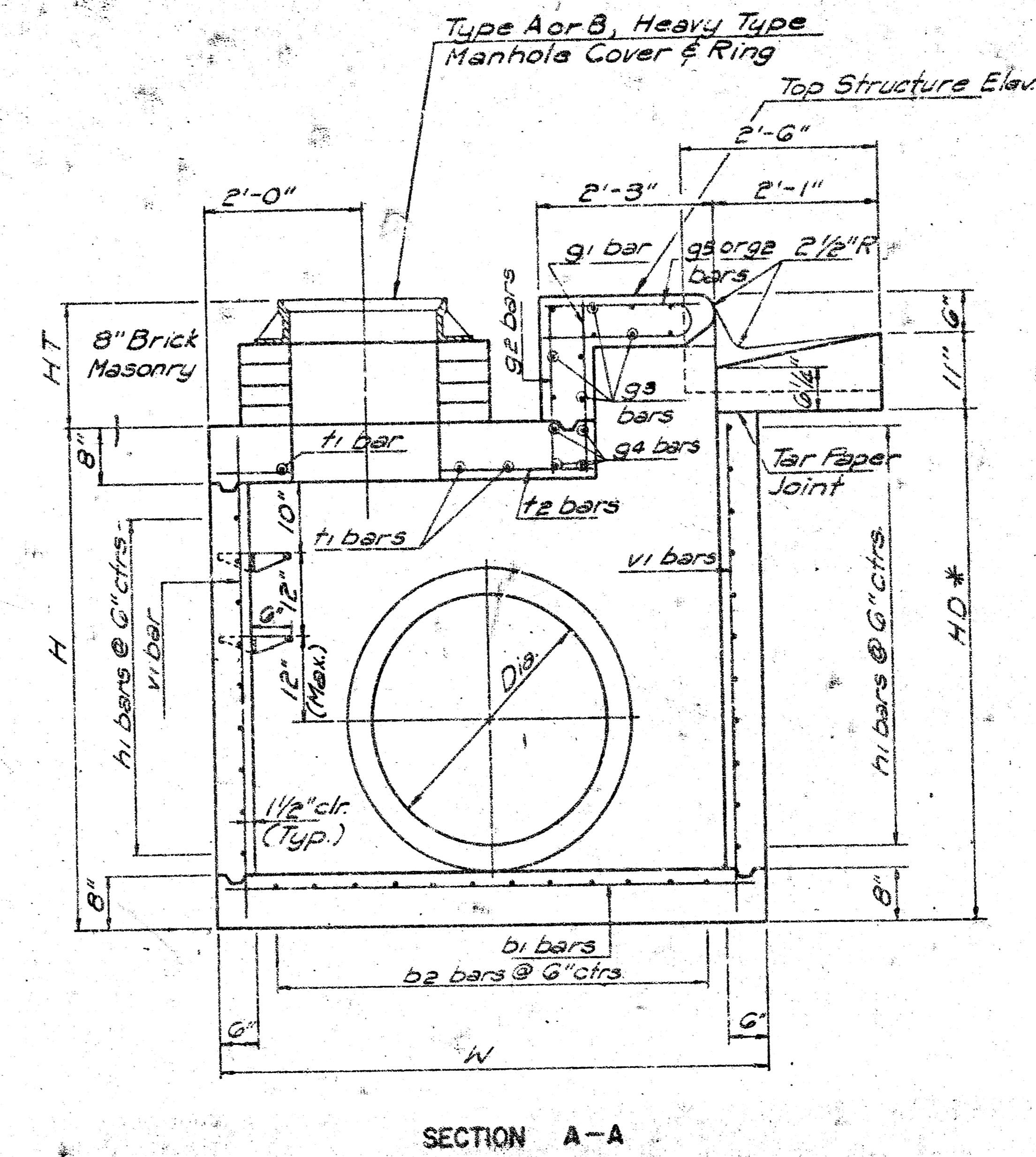
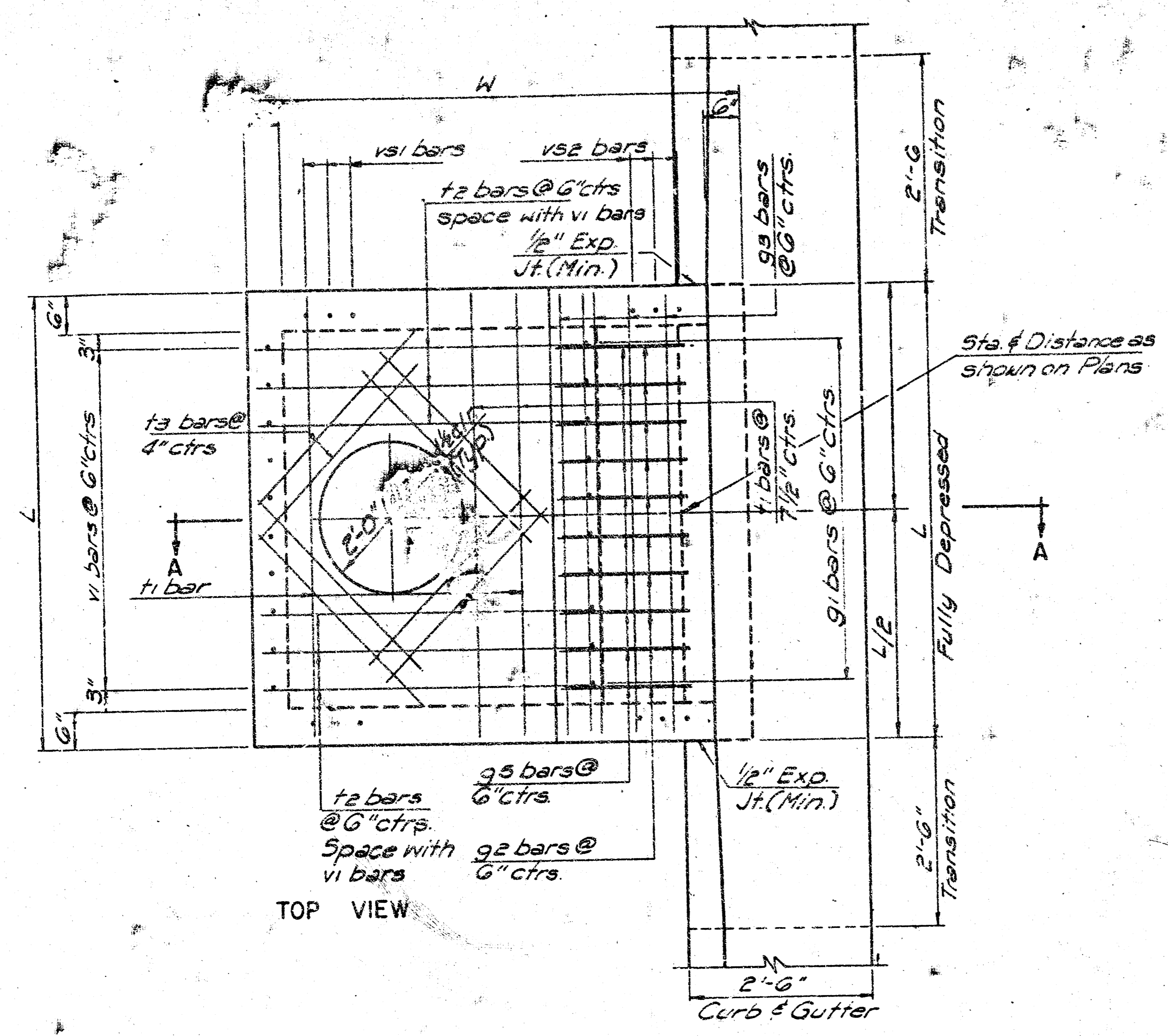
PROFILE SCALE 1" = 2' HORIZ
1" = 8' VERT

NOTE: LUMP SUM B'D FOR RE-CONSTRUCT OF
REIN CONC INLET MANHOLE IS TO INCLUDE ALL
REMOVAL COST'S.



DRAINAGE in connection w/ paving
N. SIDE 13TH STREET Accel-Decal Lane.
 W.L. Lot 17, Blk 1, Westlink Village 11th Add. To W.L. Tyler Road.
CITY OF WICHITA, KANSAS
 DEAN SELLERS Acting City Engineer
 DATE _____
 Proj No. 472-76-245-80888000-000-07

FILMED FROM THE BEST AVAILABLE COPY



Legend	Dimension	Legend	Dimension
H	7'-6"	L	6'-0"
W	7'-0"	HT	11'-6"

Bar Symbol	Bar Sizes	Bar Totals	Bar Lengths
b1	#4	10	6'-9"
b2	#4	12	5'-9"
vi	#4	20	7'-3"
vs1	#4	4	7'-3"
vs2	#4	4	8'-9"
h1	#4	20	5'-9"
h2	#4	8	6'-9"
sd1	#4	10	3'-0"
t1	#5	3	4'-9"
t2	#5	4	4'-9"
t3	#5	8	3'-3"
g1	#4	10	2'-0"
g2	#6	10	3'-5"
g3	#4	11	3'-5"
g4	#5	4	5'-5"
g5	#6	10	3'-5"

Each Side Wall has 3 vs1, 3 vs2, & 2 h3 bars

* HD equals (H+1) in all cases except as noted below.
 Srs 329+43 HD equals 7'-9" (H-6")
 Srs 331+0&5 HD equals 6'-9" (H+3")

4
4

COMBINED
MANHOLE - INLET

Designed by: _____
 Drawn by: _____