

CITY OF WICHITA, KANSAS

13th STREET COURT

STREET & INCIDENTAL DRAINAGE IMPROVEMENTS

PROJECT NO. 472-76-245-80929-000-000-001

ECHO HILLS
AN ADDITION TO WICHITA SEDGWICK COUNTY, KANSAS

B.M. City Standard Brass Cap, in
Cone, 2" North & 30" East
of S 1/4 Corner, Sec. 7,
T27S, R14E
Elev. 1525.89

SCALE 1" = 200'

BENCH MARKS

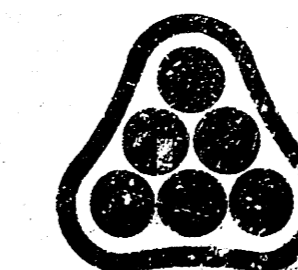
BM - City Brass Cap 25' N. & 30' E. of S 1/4 Cor.
Sec. 7, T 27S, R14E Elev. = 1579.99

BM - RR Spike in N. Side Hedge Tree 20' S.P.I.
Hedge rows S & E. Near Center SW 1/4
Elev. = 1600.08



INDEX OF SHEETS

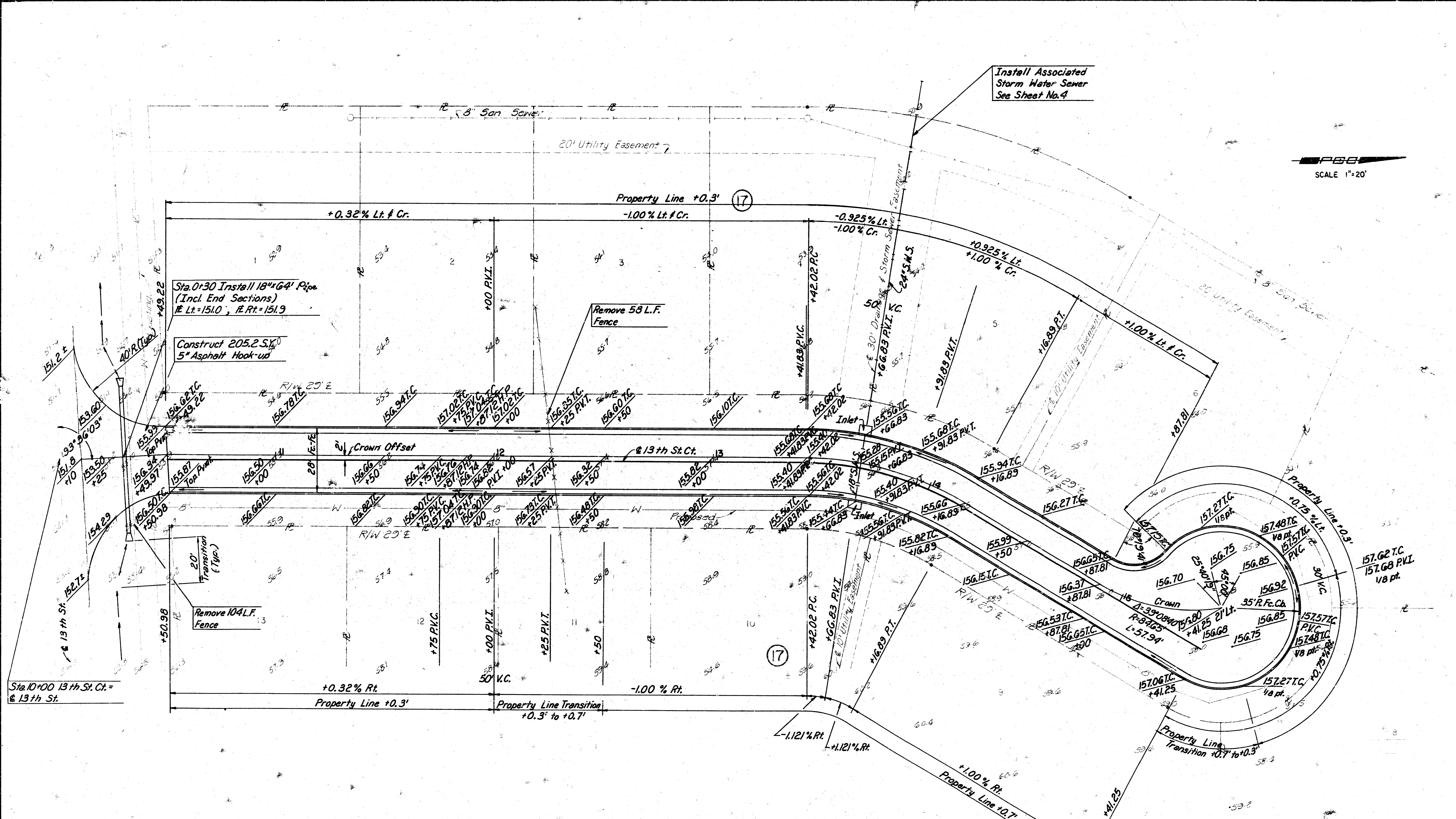
1. TITLE SHEET
2. TYPICAL SECTIONS
3. PLAN SHEET
4. DRAINAGE IMPROVEMENTS
5. HEADWALL DETAIL
6. DETAIL STD. TYPE IA CURB INLET
7. DETAIL PRE CAST TYPE IA CURB INLET
- 8-9. CROSS SECTIONS



No.	Revision	By	Date
CITY OF WICHITA, KANSAS TITLE SHEET 13 th STREET COURT PROJ. NO. 472-76-245-80929-000-000-001 PROFESSIONAL ENGINEERING CONSULTANTS, P.A. ENGINEERS WICHITA, KANSAS			
Designed by	DD CSB	Job No.	80089-3
Drawn by	GH	Date	June, 1980
			Sht. 1 of 9

SCALE 1"=20'

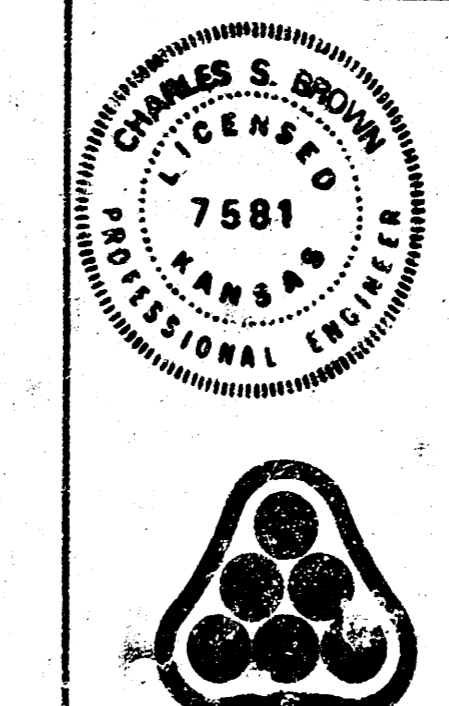
Install Associated Storm Water Sewer See Sheet No. 4



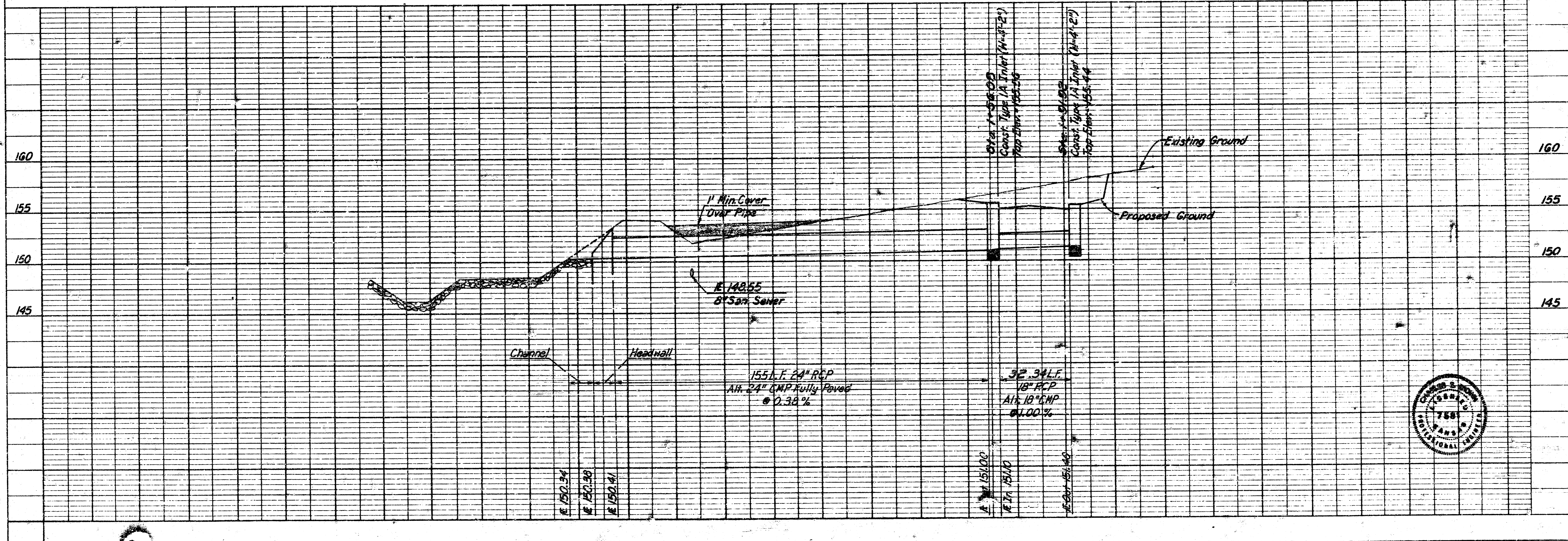
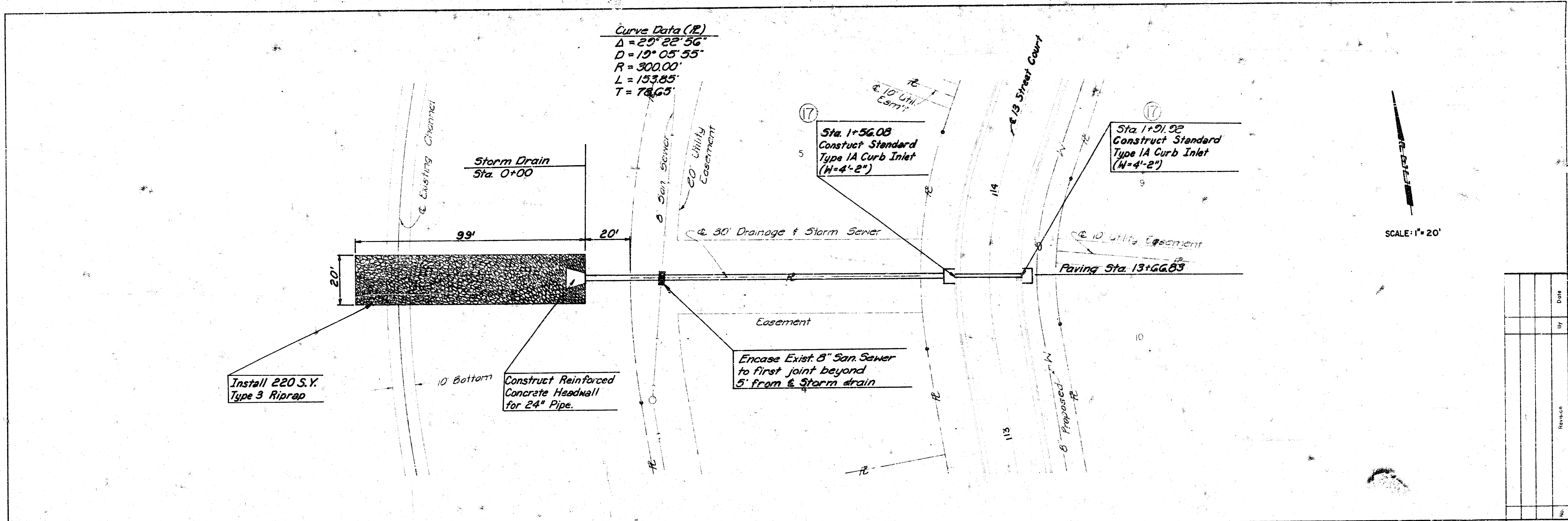
CURVE DATA BASED ON C RADIUS $\Delta 12 = 14^{\circ} 41' 28''$

STATION	C ARC LENGTH	CHORD LENGTH		DEFLECTION ANGLE	TOTAL DEFLECTION
		OFF LEFT FACE CURB	OFF RIGHT FACE CURB		
13+42.02	-	-	-	0° 00' 00"	0° 00' 00"
13+50	7.98'	9.18'	6.78'	1° 33' 57"	1° 33' 57"
13+75	25.00'	28.77'	21.23'	4° 54' 20"	6° 28' 17"
14+00	25.00'	28.77'	21.23'	4° 54' 20"	11° 22' 37"
14+16.89	16.85'	19.44'	14.34'	3° 18' 51"	14° 41' 28"

Curve Data
 $\Delta = 29^{\circ} 22' 56''$
 $D = 39^{\circ} 14' 37''$
 $R = 146.00'$
 $T = 38.28'$
 $L = 74.87'$



No.	Revision	By	Date
CITY OF WICHITA, KANSAS			
13th STREET COURT			
N. LINE 13th STREET TO CUL-DE-SAC			
PROJ. NO. 472-76-245-80929-000-000-001			
PROFESSIONAL ENGINEERING CONSULTANTS, P.A.			
ENGINEERS WICHITA, KANSAS			
Designed by	DD, JSB	Job No.	30-3
Drawn by	GH, BS, JP	Date	June 1980
			3/5



No.	Revision	By	Date

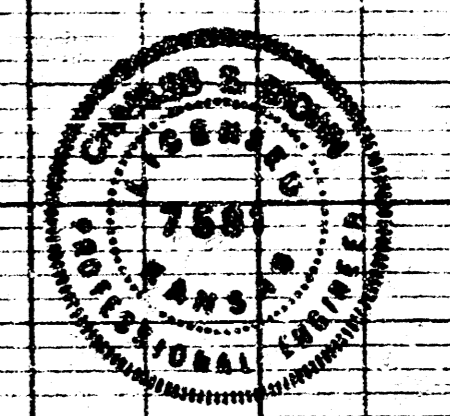
CITY OF WICHITA, KANSAS
13th STREET COURT
 DRAINAGE IMPROVEMENTS

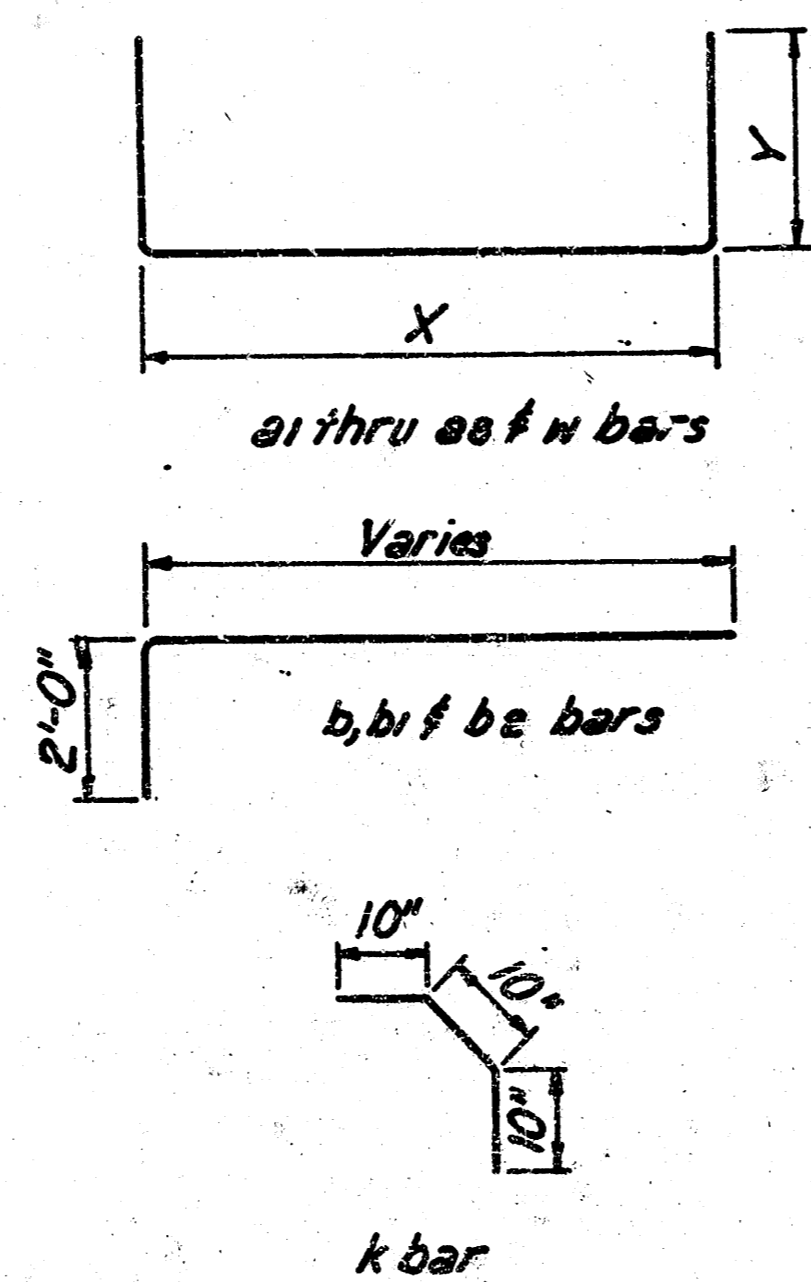
PROJ. NO. 472-76-245 80929-000-000-001

PROFESSIONAL ENGINEERING CONSULTANTS, P.A.
 ENGINEERS
 WICHITA, KANSAS

Job No. 80029-3
 Drawn by DD GSB
 Date June, 1980

Sheet 4 of 9

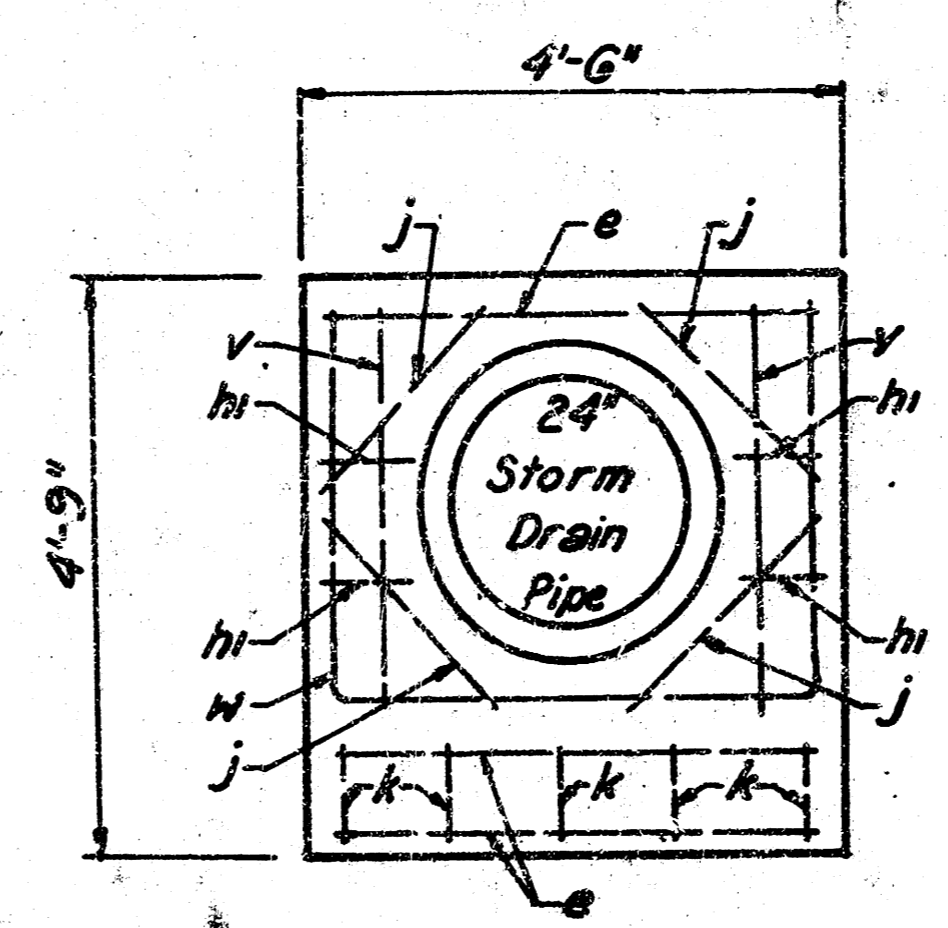




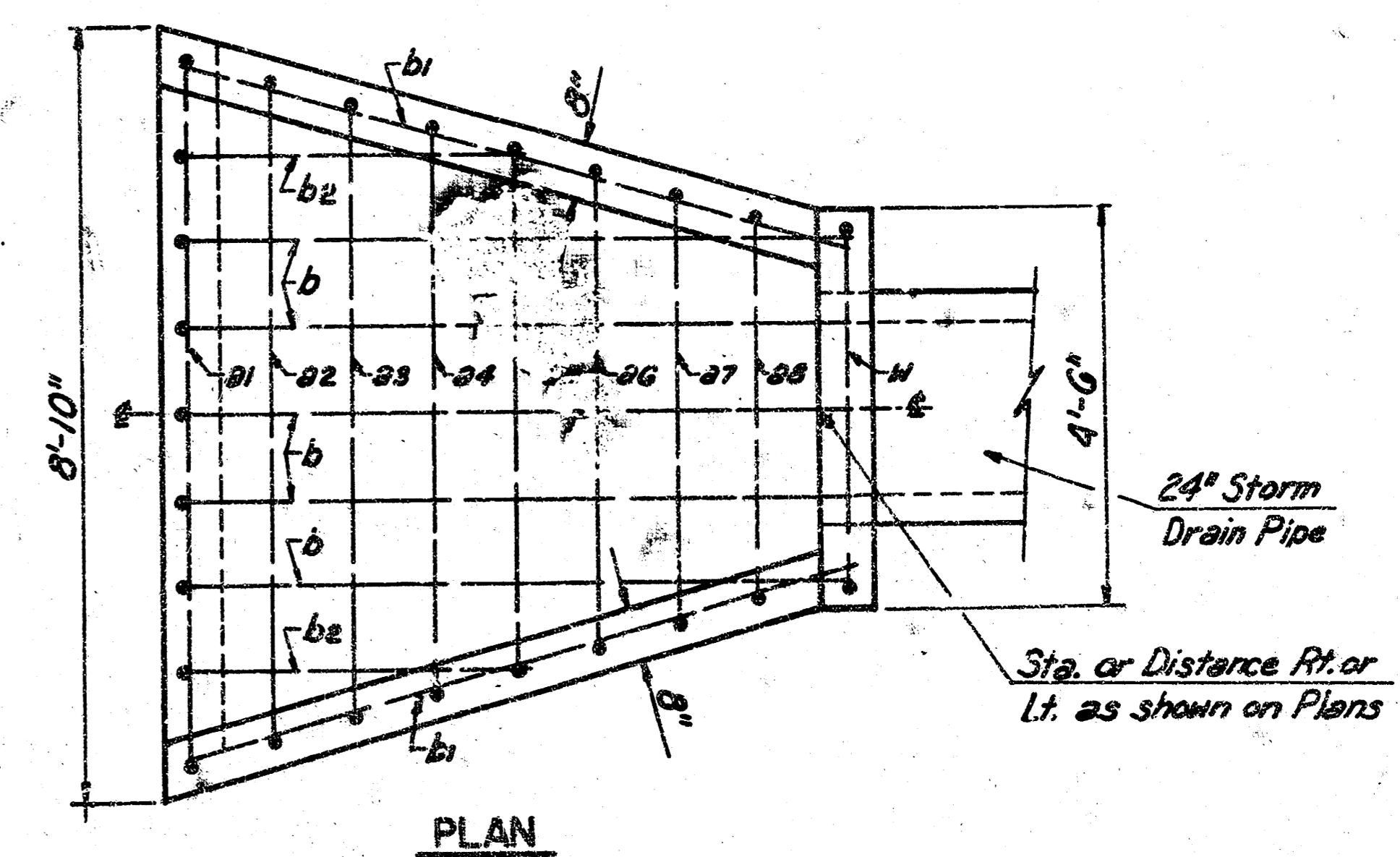
BENDING DIAGRAM

BAR LIST

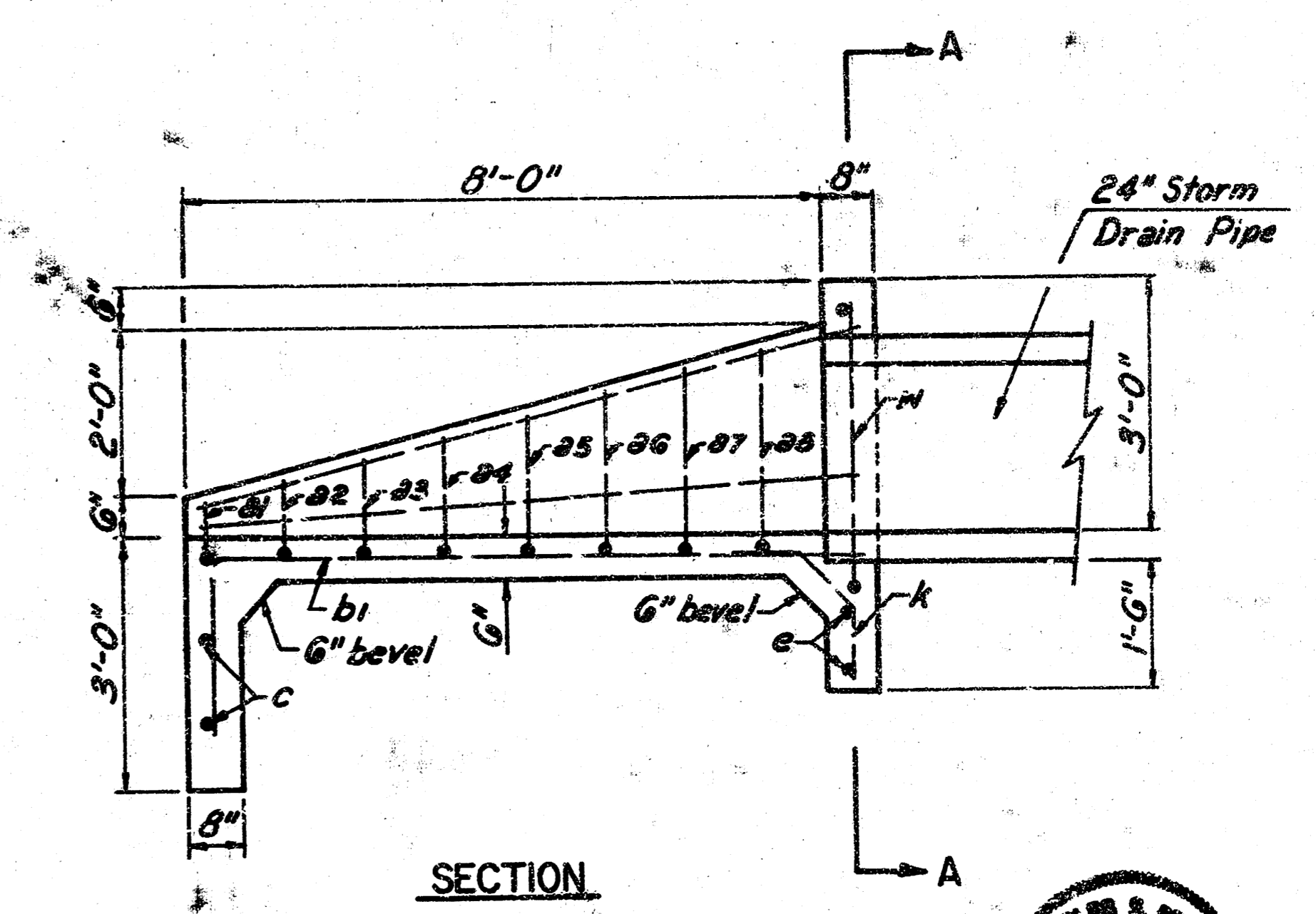
Bar	Shape	Headwall for 24" Pipe		
		X	Y	Total
a1	┌	8'-0"	0'-7"	8'-7"
a2	┌	7'-5 1/2"	0'-10"	8'-1 1/2"
a3	┌	6'-11"	1'-1"	8'-0"
a4	┌	6'-4 1/2"	1'-4"	7'-8 1/2"
a5	┌	5'-10"	1'-7"	7'-1"
a6	┌	5'-3 1/2"	1'-10"	6'-1 1/2"
a7	┌	4'-9"	2'-1"	6'-10"
a8	┌	4'-2 1/2"	2'-4"	6'-6 1/2"
N	┌	4'-0"	3'-3"	7'-3"
Bar	Shape	Number	Length	
b	┌	5	10'-2"	
b1	┌	2	10'-4"	
b2	┌	2	6'-2"	
c	┌	2	8'-3"	
d	┌	2	8'-7"	
e	┌	3	4'-1"	
f	┌	2	5'-6"	
h1	┌	4	0'-9"	
j	┌	4	2'-5"	
k	┌	5	2'-6"	
v	┌	2	3'-5"	
Concrete			2.75 C.Y.	
Reinforcing Steel			215 Lbs.	



SECTION A-A



PLAN



SECTION

GENERAL NOTES
 All rebar shall be #4 bars and all concrete shall be City "G Sack" Concrete Paving Mix. Bevel all exposed edges with a 3/4" triangular moulding. Headwall requires only one each of a f w bars. Concrete quantities make no deduction for storm drain pipe through headwall.



CITY OF WICHITA, KANSAS

HEADWALL DETAILS

13th STREET COURT

PROJ. NO. 472-76-245-80929-000-000-001

PROFESSIONAL ENGINEERING CONSULTANTS, P.A.

ENGINEERS
WICHITA, KANSAS

Designed by _____ Checked by _____
 Drawn by JP Date June 13, 71 Job No. 800-8

Sheet No. 5 of 9