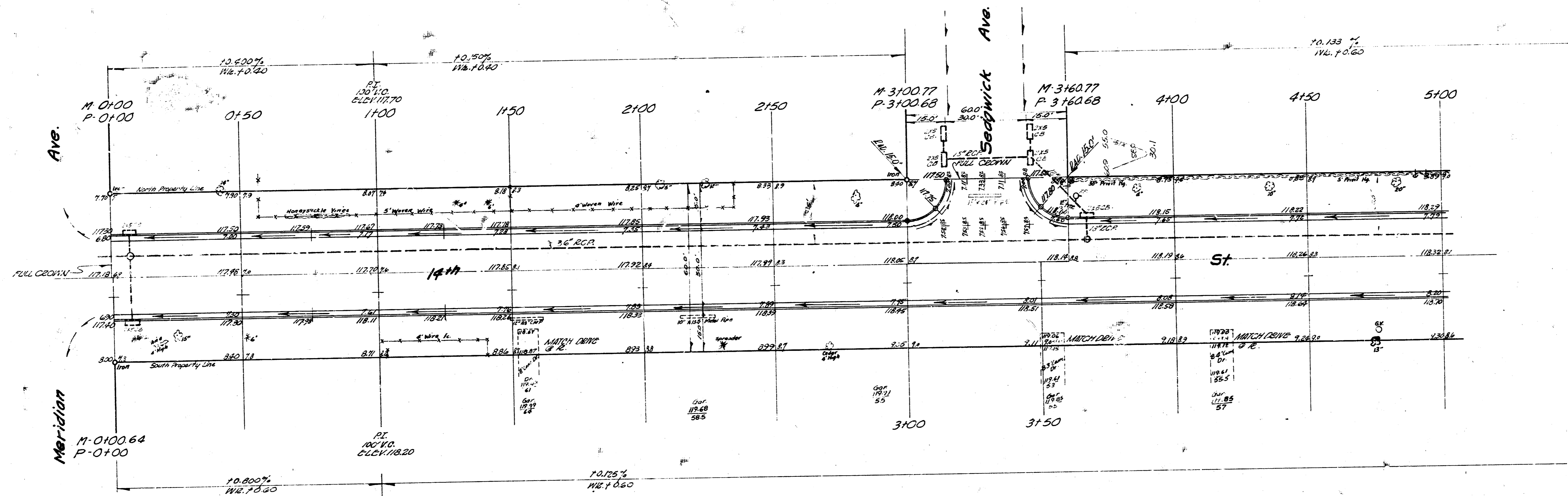
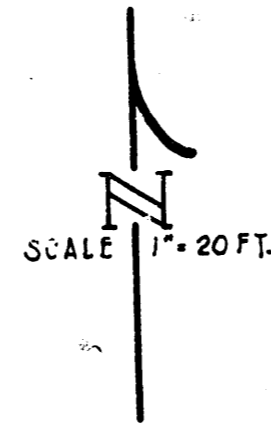


B.M. 12037 - NW Cor. Conc. Porch Ho. # 2407 W 14<sup>th</sup> St.  
 10.34 - City Sid. SE Cor Meridian & 13<sup>th</sup> St.  
 121.44 - SW Cor 1<sup>st</sup> Conc. Step Ho. # 1500 N. Atterian  
 121.02 - NE Cor 1<sup>st</sup> Conc. Step Ho. # 2215 W 14<sup>th</sup> St.  
 Stationed On %

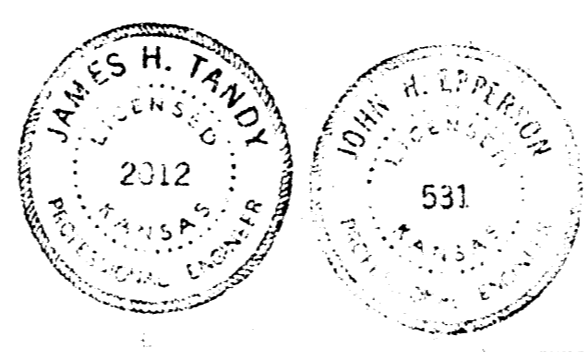


NOTE TO FIELD ENGINEER AND CONTRACTOR: ALL CLEARANCE  
 PIPES TO BE DISPOSED OF IN ACCORDANCE WITH CITY DEPT  
 CHECKS.

Note to Field Engineer - All "BRAVS" Are to be Driven (6") below  
 finished grade.

EXCAVATION TOTALS

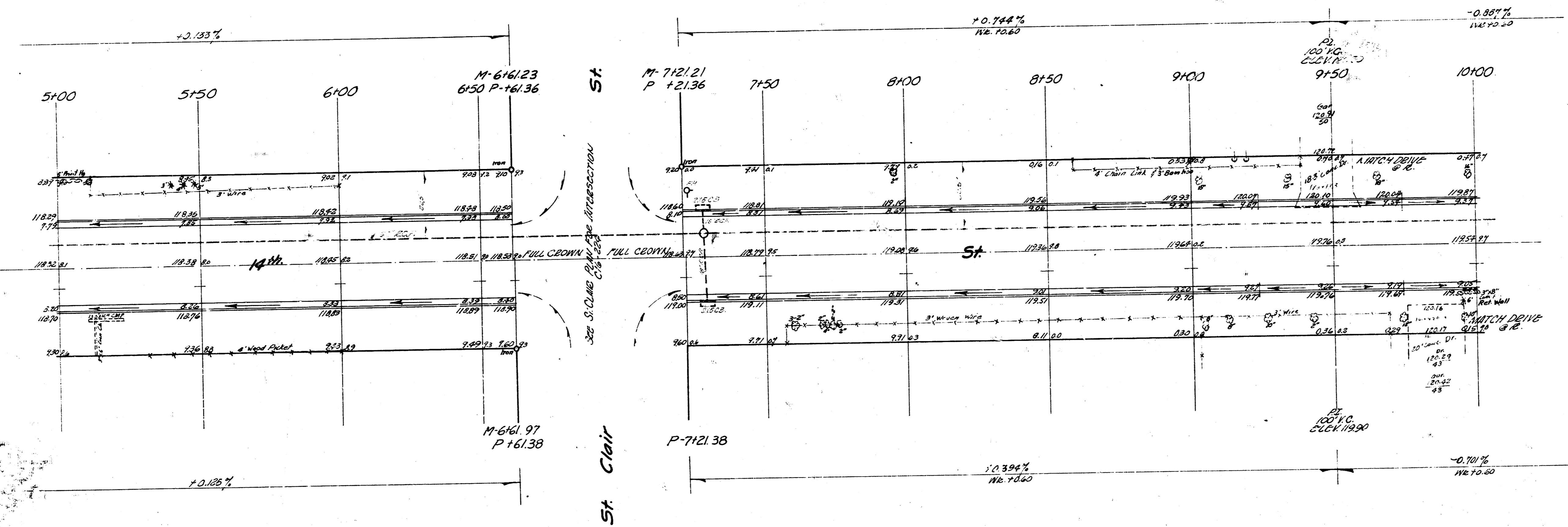
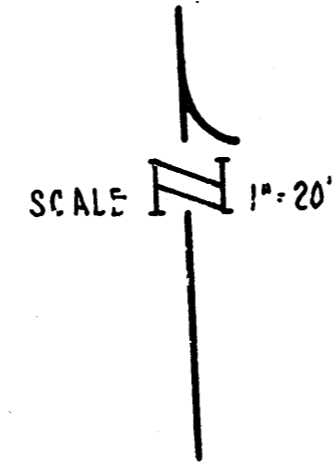
PROPERTY	128.8
CITY	212
TOTAL	340.8
10% EX	34.08
TOTAL EX	283.30



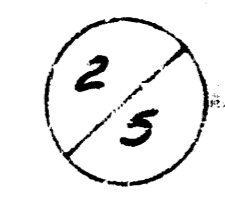
1/5

14<sup>th</sup> St.  
 E.L. MERIDIAN - WL. CLARENCE  
 26-2-30 A.C.  
 CITY OF WICHITA, KANSAS  
 B.E. SMITH CITY ENGINEER  
 Date: MAY 1958 Proj No C16-221

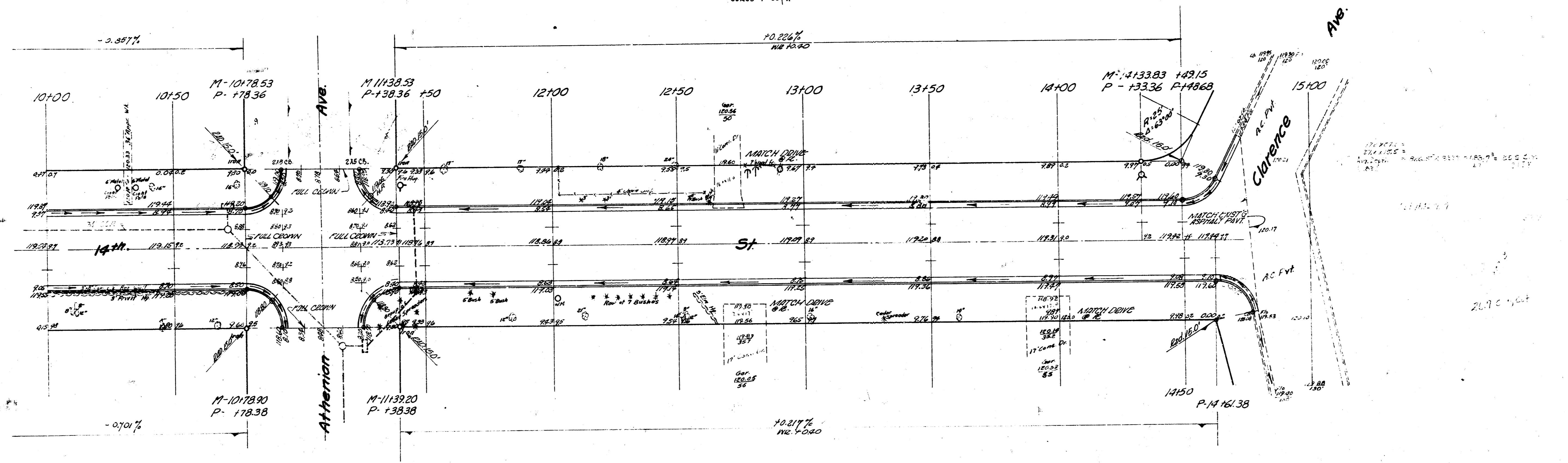
Stationed on R



14th St  
C16-221



B.M. 21.02 - NE Cor. 1st Conc. Strip Ho# 2215 W 14th St  
 121.44 - SW Cor. 1st Conc. Strip Ho# 1500 N Athenian  
 Stationed on g



NOTE TO FIELD ENGINEER and Contractor: ALL ENTRANCE  
 SIGNS are to be disposed of in accordance with CITY  
 DIRT CHECKS.

NOTE TO FIELD ENGINEER: ALL "SIGNS" are to be driven (6")  
 below FINISHED GRADES.

14th St  
 C16-221

