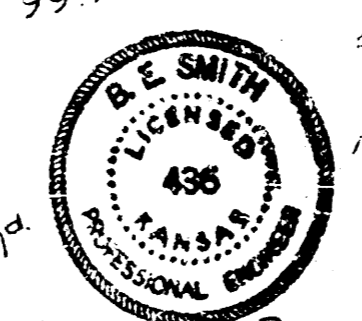
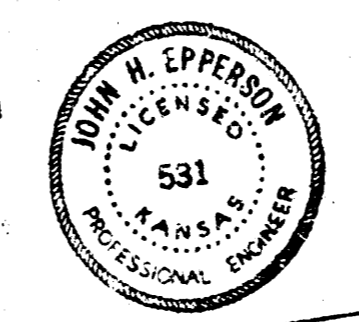
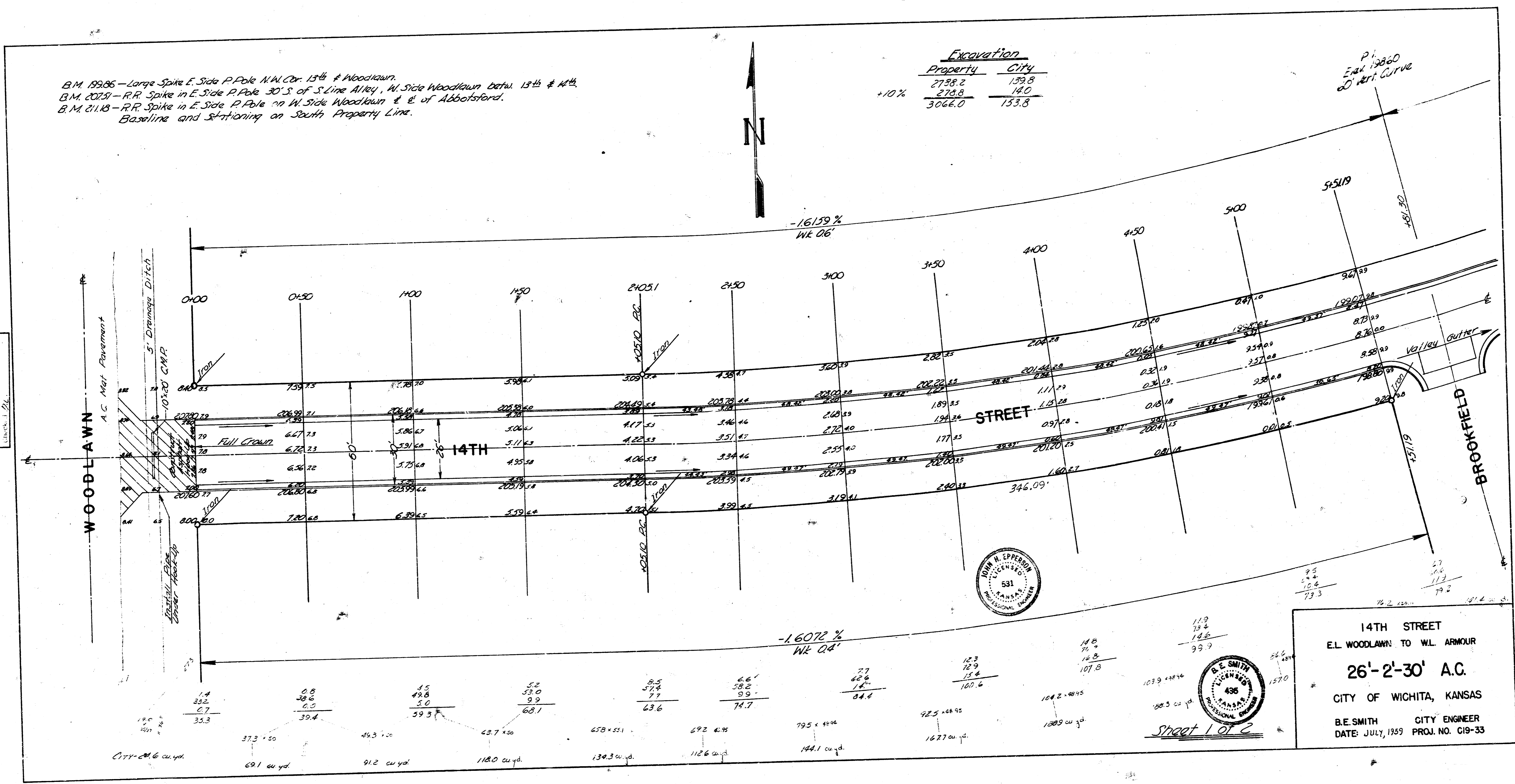


B.M. 19986 - Large Spike E. Side P. Pole N.W. Cor. 13th & Woodlawn.  
 B.M. 20251 - RR Spike in E. Side P. Pole 30' S. of S. Line Alley, N. Side Woodlawn betw. 13th & 14th.  
 B.M. 21113 - RR Spike in E. Side P. Pole on N. Side Woodlawn & E. of Abbottsford.  
 Baseline and Stationing on South Property Line.

Excavation	
Property	City
2758.2	139.8
2758.8	14.0
3066.0	153.8

S. W. Oltman 11/19/37  
 Jones 7/1/39  
 11/19/37



14TH STREET  
 E.L. WOODLAWN TO W.L. ARMOUR  
 26'-2'-30' A.C.  
 CITY OF WICHITA, KANSAS  
 B.E. SMITH CITY ENGINEER  
 DATE: JULY, 1939 PROJ. NO. C19-33

CITY - 24.6 cu. yd.

69.1 cu. yd.

91.2 cu. yd.

118.0 cu. yd.

134.3 cu. yd.

112.6 cu. yd.

144.1 cu. yd.

162.7 cu. yd.

138.9 cu. yd.

103.9 cu. yd.

200.3 cu. yd.

127.0 cu. yd.

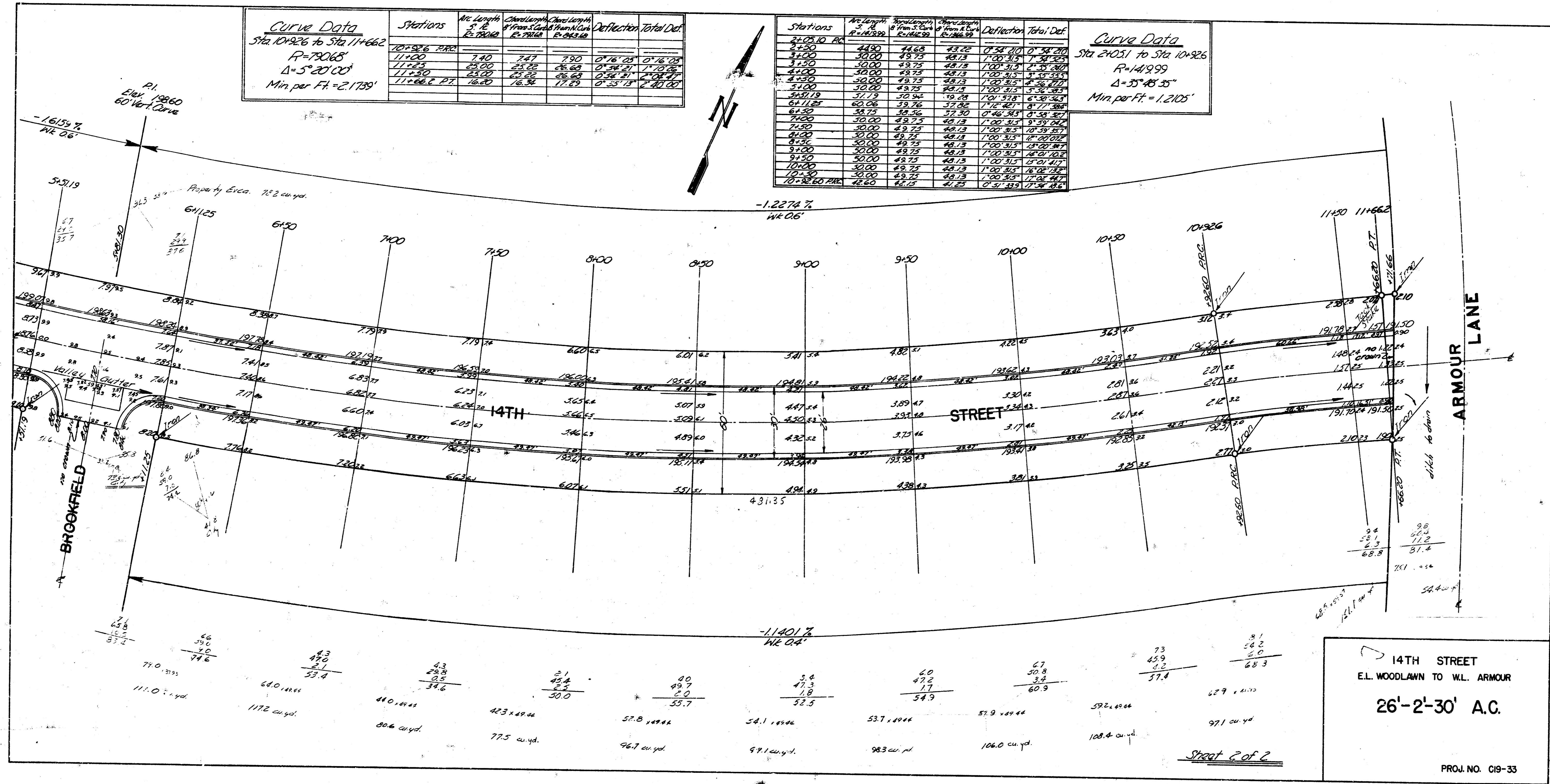
**Curve Data**  
 Sta 10+926 to Sta 11+662  
 R=750.65'  
 $\Delta=5^{\circ}20'00''$   
 Min. per Ft. = 2.139'

Stations	W.L. Length L	Chord Length C	Chord Length C	Deflection D	Total Def.
10+926	740	747	750	0°16'08"	0°16'08"
11+00	25.00	25.00	25.00	0°36'21"	0°36'21"
11+250	25.00	25.00	25.00	0°36'21"	0°36'21"
11+500	25.00	25.00	25.00	0°36'21"	0°36'21"
11+662	16.60	16.36	17.25	0°35'13"	0°35'13"



Stations	W.L. Length L	Chord Length C	Chord Length C	Deflection D	Total Def.
10+926	44.80	44.68	45.02	0°54'20"	0°54'20"
11+00	30.00	29.75	29.75	1°00'31"	1°00'31"
11+250	30.00	29.75	29.75	1°00'31"	1°00'31"
11+500	30.00	29.75	29.75	1°00'31"	1°00'31"
11+662	16.60	16.36	17.25	0°35'13"	0°35'13"

**Curve Data**  
 Sta 2+031 to Sta 10+926  
 R=1419.99'  
 $\Delta=35^{\circ}48'35''$   
 Min. per Ft. = 1.205'



Property Line  
 1615%  
 NE 06'

111.0 cu yd  
 1172 cu yd  
 410 cu yd  
 423 cu yd  
 57.8 cu yd  
 54.1 cu yd  
 53.7 cu yd  
 57.9 cu yd  
 106.4 cu yd

14TH STREET  
 E.L. WOODLAWN TO W.L. ARMOUR  
 26'-2'-30' A.C.  
 PROJ. NO. C19-33

Street 2 of 2