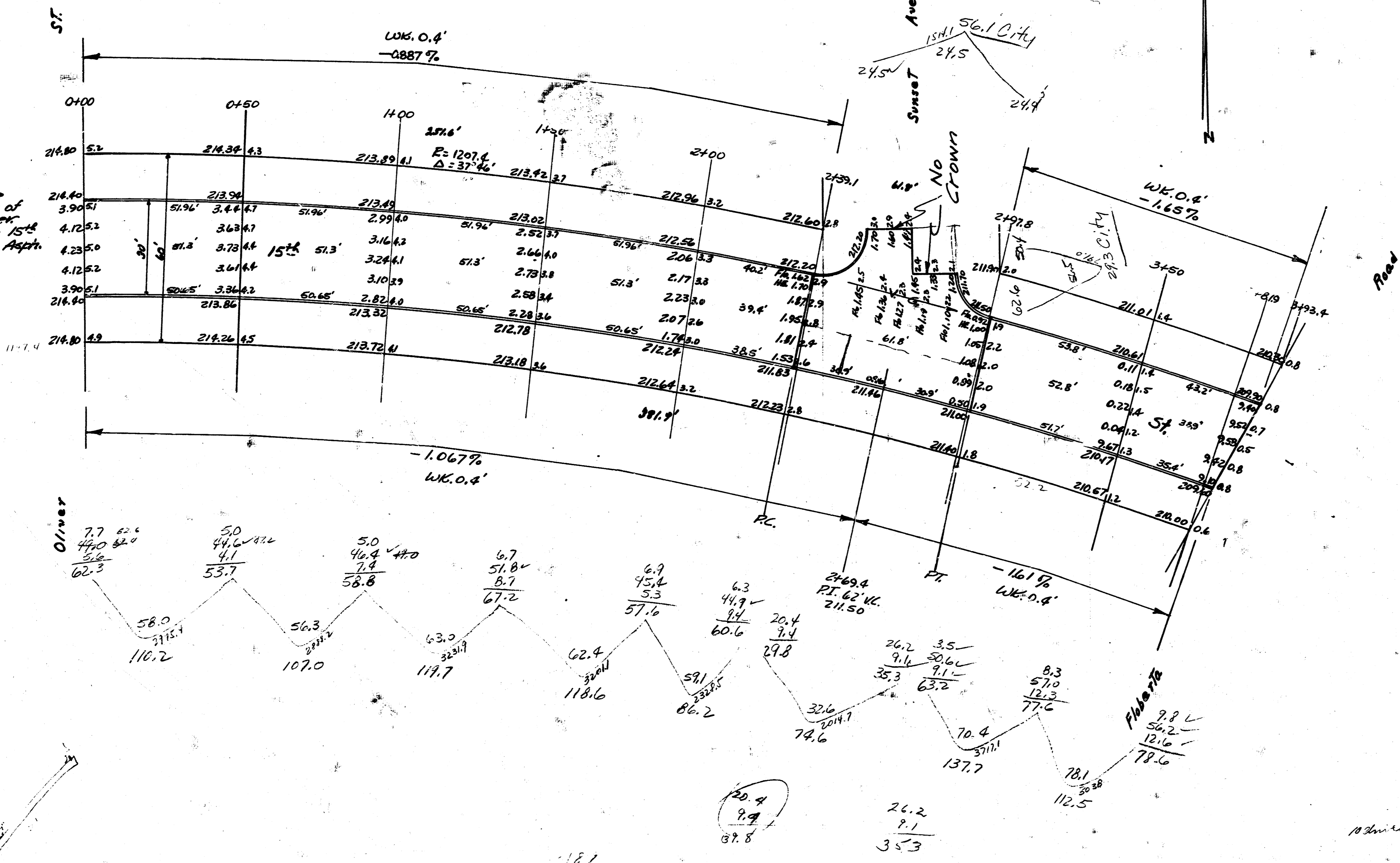


B.M. 209.69 Knurled #40 spike in tree, N.E. Cor 13th & Oliver.

Note: Stationing is on S.P.L.
Grades set on Cb line distances.

Note: Install drain pipe
under intersection of
15th & Oliver, E.L. Oliver.
Connect corr. pit on 15th
to pit on Oliver with Asph.



Prop	City
1162	56.1
1670	27.3
1177	85.9
1180	110.6
862	
74.	
1377	
1127	
866.5	
1107	
<hr/>	
953.2 Cu Yds.	93.7 Cu Yds

Grand Total

Prop	City
953.2	73.9 Cu Yds
623.9	
<hr/>	
1,577.1 Cu Yds.	

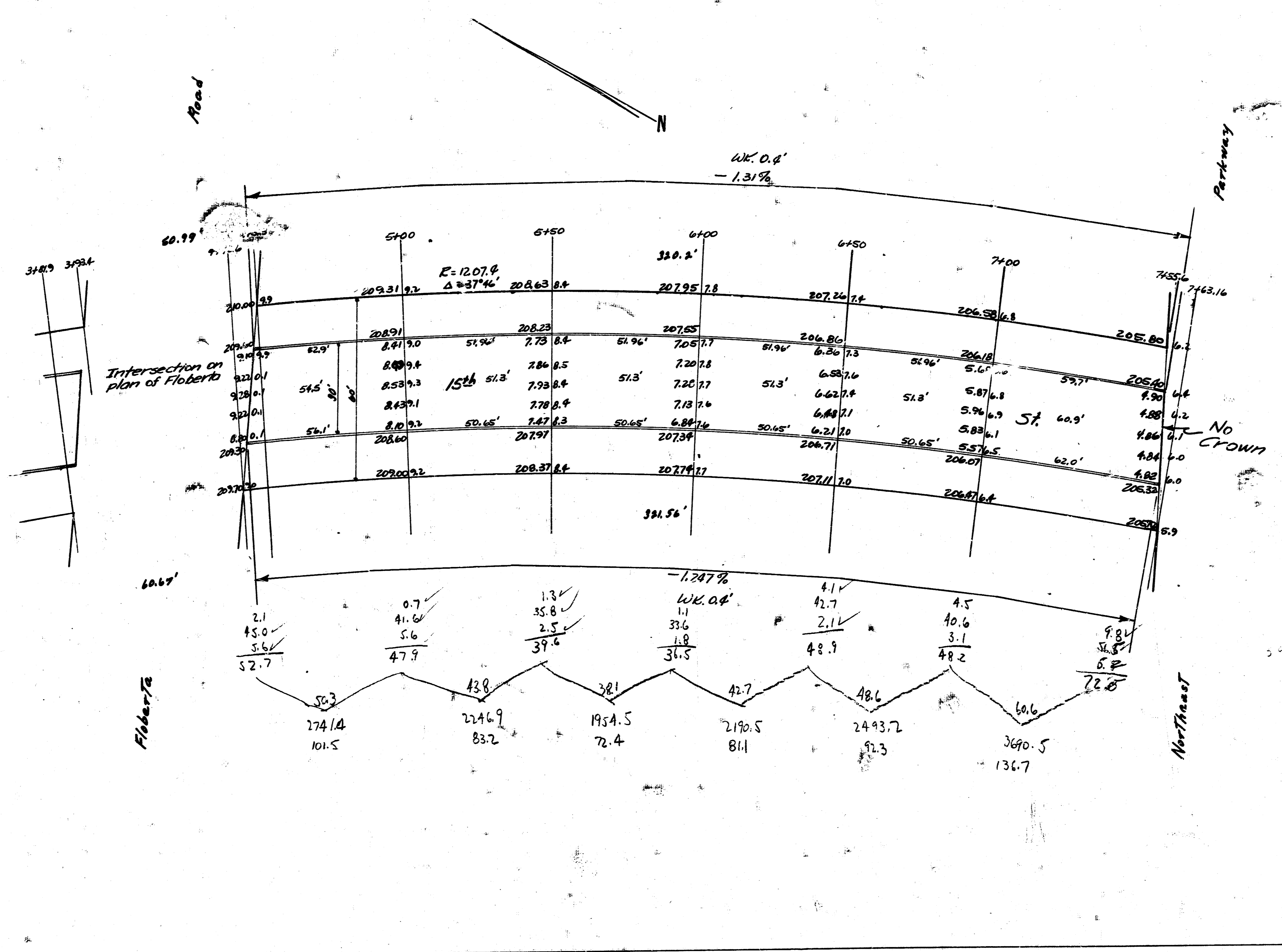
15th ST
 E.L. Oliver - W.L. Northeast Anthony
 30' Conc. & Cb.
 City of Wichita, Kansas
 L.K. White City Engineer
 September 1918 Project CIP 122

Prop
 101.5
 83.2
 72.0
 81.1
 92.3
 136.7

 367.2
 +10.6

 623.9

City
 0



2
 2

4 14 5 3