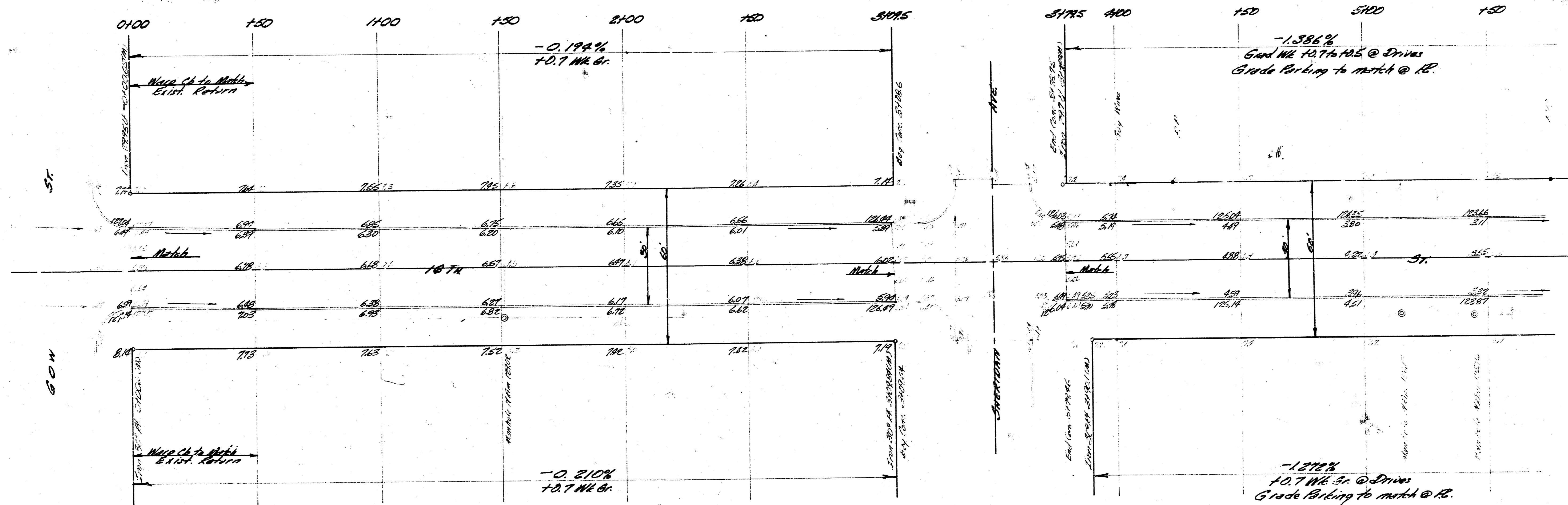


B.M. 127.16 @ in Globe E End Radius S.E. Cor. 16<sup>th</sup> & Gow.  
 B.M. 128.22 N.W. Cor. Conc. Step of House on S.E. Cor. 16<sup>th</sup> & Sheridan

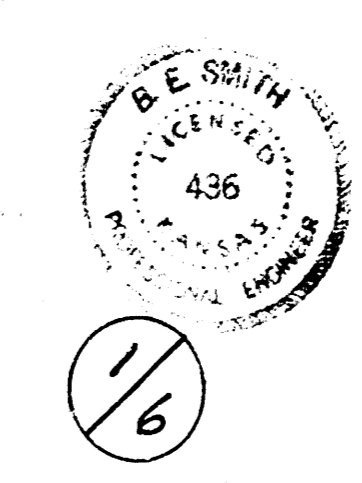
DATE: 06/15/27  
 BY: B.E.S.  
 CHECKED: B.E.S.



Baseline 30' N. of irons @ S.E. 16<sup>th</sup> @ Sheridan & St. Paul

Excavation

Prop	3304.2 CY	City	299.3 CY
	330.4 ± 10%		29.8 ± 10%
	3634.6 Total CY		329.1 Total CY



SIXTEENTH ST.  
 FROM E.L. GOW ST.  
 TO W.L. ST. PAUL AVE  
 30' CONC & CB.  
 CITY OF WICHITA, KANSAS  
 B.E. SMITH CITY ENGINEER  
 DATE PROJ. NO. C15-36

S.M. 121.99 6" in Globe Top N. Co. NH. Cont'd. L. 16 Th. St.  
 S.M. 123.70 R.R. Sp't N. Side R.P. SW. Cor. 167th Massachusetts St.

