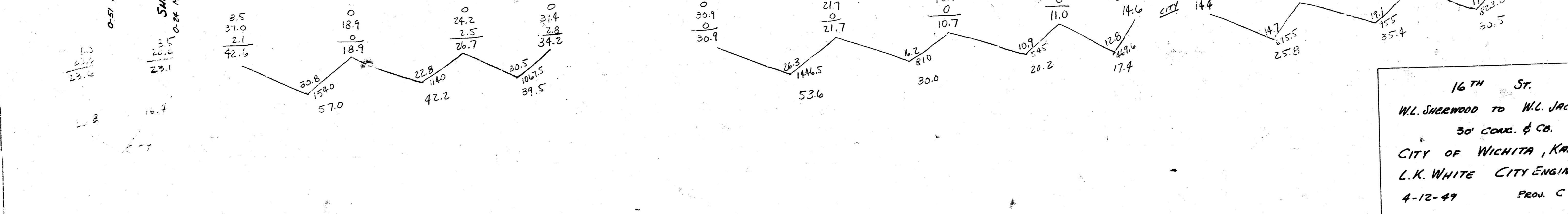
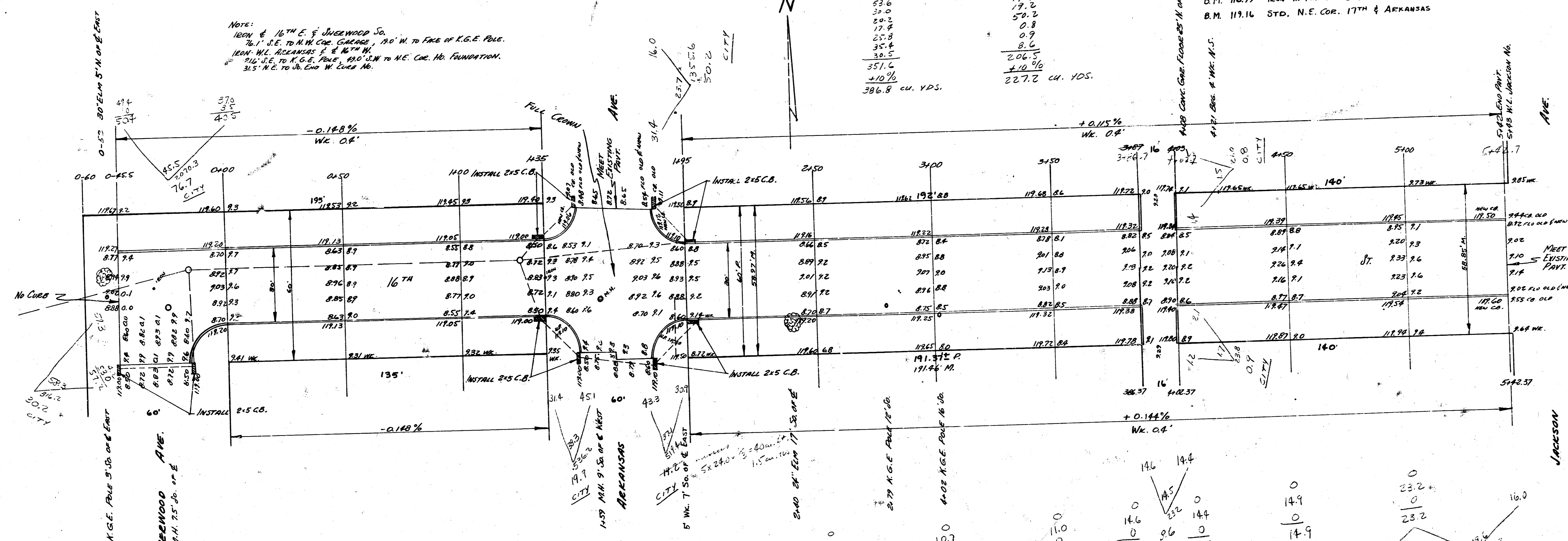


Notes:
 16TH ST. 1/4" S.E. TO N.W. COR. GARAGE, 150' W. TO FIRE OF K.G.E. POLE.
 76.1' S.E. TO N.W. COR. GARAGE, 150' W. TO FIRE OF K.G.E. POLE.
 16TH ST. 1/4" S.E. TO N.W. COR. GARAGE, 150' W. TO FIRE OF K.G.E. POLE.
 76.1' S.E. TO N.W. COR. GARAGE, 150' W. TO FIRE OF K.G.E. POLE.

PROPERTY	CITY
57.0	76.7
42.5	30.2
37.5	19.7
53.6	15.2
32.0	50.2
20.2	0.9
17.8	0.9
25.8	8.6
35.8	20.5
35.6	10.36
210%	22.72
386.8 cu. YDS.	

B.M. 118.99 IRON IN TIMBLE OF JACKSON N.L. 16TH
 B.M. 119.16 STD. N.E. COR. 17TH & ARKANSAS



16TH ST.
 W.L. SHEEWOD TO W.L. JACKSON
 30' CONC. & CB.
 CITY OF WICHITA, KANSAS
 L.K. WHITE
 CITY ENGINEER
 4-12-47
 PROJ. C19-46

