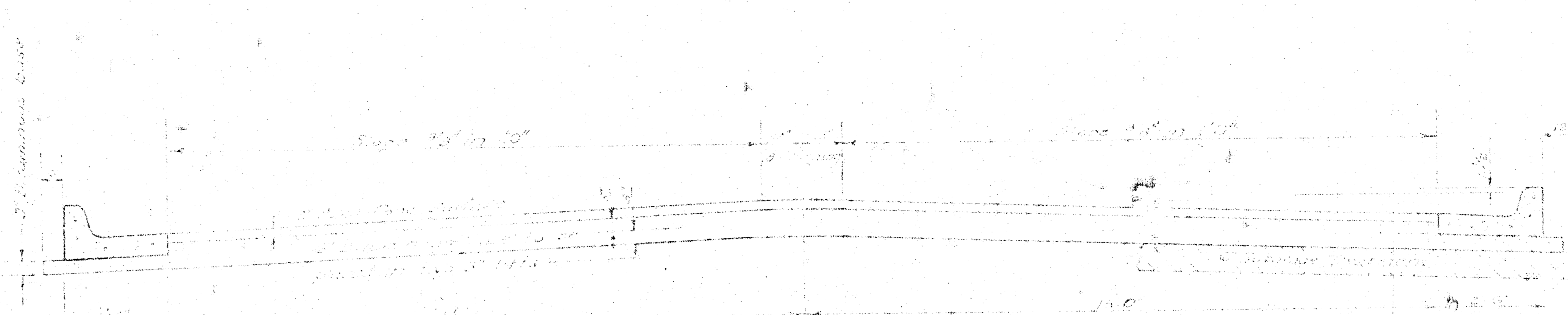


**17TH ST.**  
**E.L. TYLER RD. TO E.L. LOT 12, BLK. 7, WESTLINK 16TH**  
**472-76-245-80736-000-000-001**



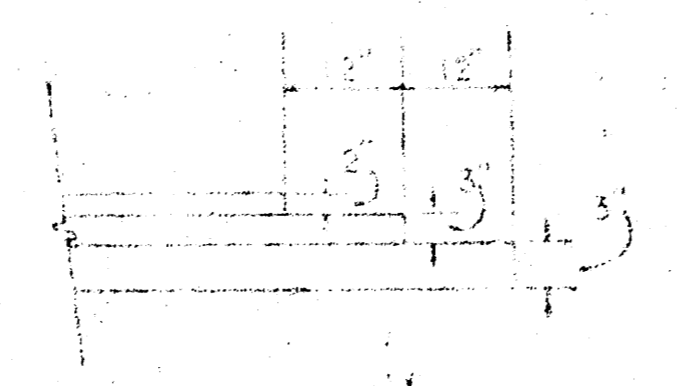
**TYPICAL SECTION**

**3.5' ASPHALTIC CONCRETE PAVEMENT WITH BITUMINOUS BASE**

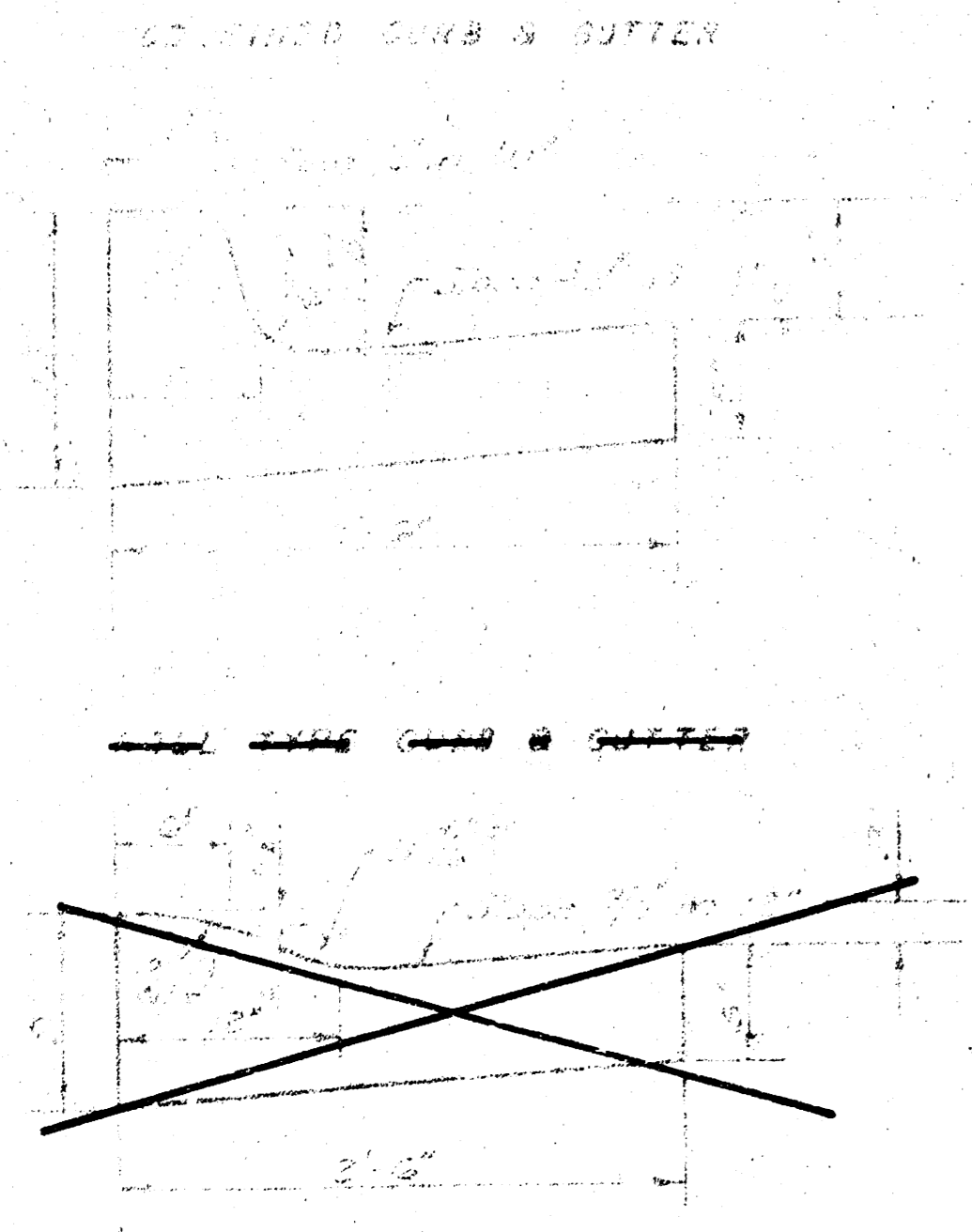
A TACK COAT OF EMULSIFIED ASPHALT (SS-1H) SHALL BE APPLIED AT AN APPROXIMATE RATE 0.05 GALLONS PER SQ YD BETWEEN LIFTS OF ASPHALTIC MATERIALS WHEN ORDERED BY THE ENGINEER. TACK COAT WILL NOT BE PAID FOR DIRECTLY AND SHALL BE CONSIDERED AS SUBSIDIARY TO PRICE BID FOR ASPHALTIC PAVEMENT.

BITUMINOUS BASE AND ASPHALTIC CONCRETE WEARING SURFACE SHALL BE PLACED WITH A LAYDOWN MACHINE HAVING AUTOMATIC ELECTRONIC CONTROLS FOR CROWN AND GRADE. CONSTRUCTION JOINTS IN EACH LIFT SHALL BE STAGGERED A MINIMUM DISTANCE OF 1' WITH JOINTS IN PRECEDING LIFTS AND PLACED SUCH THAT A JOINT WILL BE CONSTRUCTED ON THE CENTERLINE IN THE TOP LIFT.

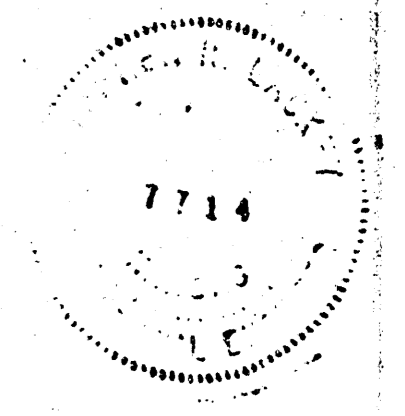
**DETAIL OF TRANSVERSE CONSTRUCTION JOINTS**



TRANSVERSE CONSTRUCTION JOINTS SHALL BE CONSTRUCTED IN FLEXIBLE BASE MEMBERS AT LOCATIONS WHERE PAVEMENT TEMPORARILY ENDS TO FACILITATE FUTURE PAVEMENT CONSTRUCTION AS SHOWN BY DETAIL. THE COST OF CONSTRUCTING THE TRANSVERSE CONSTRUCTION JOINTS SHALL NOT BE MEASURED OR PAID FOR DIRECTLY BUT SHALL BE INCLUDED IN THE BID PRICE FOR SQUARE YARDS OF ASPHALTIC CONCRETE PAVEMENT.



*The City Engineer's approval does not constitute an endorsement of the product or a warranty of the quality of the work. The contractor shall be responsible for the quality of the work and shall be held liable for any defects in the work.*



**CITY OF WICHITA, KANSAS**  
 DEPARTMENT OF PUBLIC WORKS & ENGINEERING  
 DIVISION  
 R.W. GINN CITY ENGINEER  
 DATE \_\_\_\_\_ FILE NO. **472-76-245-80736-000-000-001**

**FILMED FROM THE BEST AVAILABLE COPY .....**

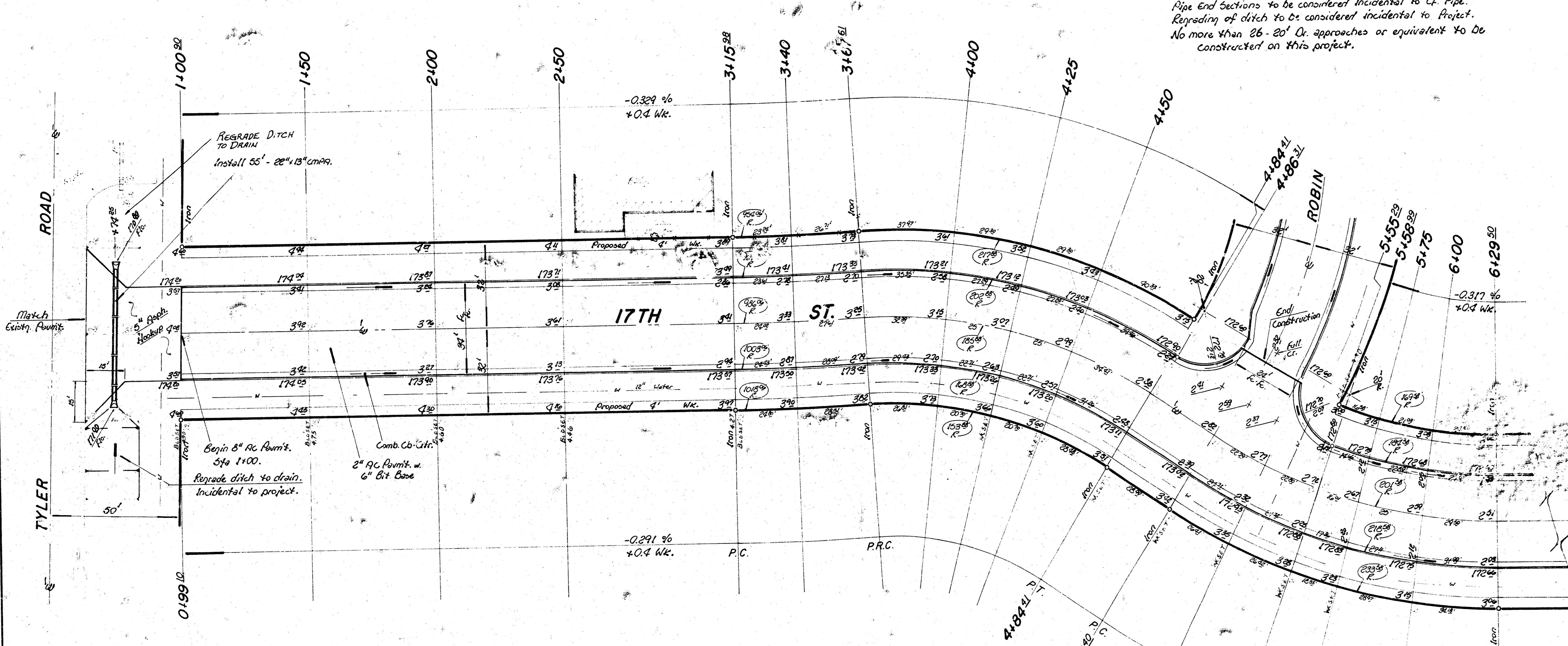
B.M. 172<sup>48</sup> City Std. 31' S. & 36' E. of 1/4 Sec. Cor. Tyler & 17th St.  
 B.M. 171<sup>48</sup> RR Spt. E.R. PP. SW. Cor. Tyler & 17th 1st PP N. of 1402. N. Tyler.

Baseline is E 17th St.

**Note:**

Ties to be taken & any 'trees' moved or destroyed during construction to be replaced.  
 Pipe end sections to be considered incidental to C.F. Pipe.  
 Regrading of ditch to be considered incidental to Project.  
 No more than 26-20' O. approaches or equivalent to be constructed on this project.

Scale: 1" = 20'



Survey Notes  
 Plan Modified  
 Checked

3° - 28'00" - 25'00" 51'00" LC = 51'00"

STA	8'	4'	8'	8'	0'00.00	0'00.00
3+15 <sup>00</sup>					0'00.00	0'00.00
3+50	24'00"	23'00"	24'00"	24'00"	0'41.52'	0'41.52'
3+67 <sup>04</sup>	27'04"	26'04"	28'00"	28'00"	0'28.08'	1'30.00'

Defl. / Ft. = 1.431732 min.

Δ = 36° P. 185'00" T. 60'00" L = 116'00" LC = 114'00"

STA	8'	4'	8'	8'	0'00.00	0'00.00
3+67 <sup>04</sup>					0'00.00	0'00.00
4+00	32'00"	32'00"	28'00"	28'00"	4'59.31'	4'59.31'
4+25	25'	28'00"	21'00"	21'00"	3'51.11'	5'50.42'
4+50	25'	28'00"	21'00"	21'00"	3'51.11'	12'41.53'
4+84 <sup>04</sup>	34'00"	38'00"	29'00"	29'00"	3'18.07'	16'00.00'

Defl. / Ft. = 9.2472208 min.

Δ = 33° P. 201'00" T. 59'00" L = 116'00" LC = 114'00"

STA	8'	4'	8'	8'	0'00.00	0'00.00
5+13 <sup>00</sup>					0'00.00	0'00.00
5+36 <sup>00</sup>	22'00"	19'00"	20'00"	20'00"	3'14.20'	3'14.20'
5+58 <sup>00</sup>	22'00"	19'00"	20'00"	20'00"	3'14.20'	6'28.40'
5+75	16'00"	14'00"	17'00"	17'00"	2'16.31'	8'45.16'
6+00	25'	21'00"	28'00"	28'00"	3'33.10'	12'18.26'
6+29 <sup>50</sup>	29'00"	25'00"	33'00"	33'00"	4'11.34'	16'30.00'

Defl. / Ft. = 8.5270036 min.

**SUBGRADE**  
 TYPE OF SUBGRADE TREATMENT SHALL BE DETERMINED BY THE FIELD ENGINEER. SUBGRADE TREATMENT MAY CONSIST OF FINE TREATMENT, CURBENT, OR COARSE SUBGRADE TREATMENT. MATERIAL SHALL BE PLACED AT THE BOTTOM OF THE

**Earthwork Quantities**

Excavation = 2108 <sup>00</sup> cy	Comp. Fill = 138 <sup>00</sup> cy	Excavation = 329 <sup>00</sup> cy	Comp. Fill = 22 <sup>00</sup> cy
+ 10% = 2108 <sup>00</sup> cy	+ 10% = 14 <sup>00</sup> cy	+ 10% = 329 <sup>00</sup> cy	+ 10% = 23 <sup>00</sup> cy
Total = 2319 <sup>00</sup> cy	Total = 152 <sup>00</sup> cy	Total = 361 <sup>00</sup> cy	Total = 24 <sup>00</sup> cy
Manipulation = 5353 <sup>00</sup> cy		Manipulation = 1034 <sup>00</sup> cy	

**17TH ST.**  
 E.L. Tyler Rd to E.L. Lot 12, Blk. 7, Westlk. 16  
 35' B.B. - 8" AC Pavmt. w. Comb. Curb & Str.  
**City of Wichita, KS.**  
 R. W. Linn - City Engineer  
 Project No. \_\_\_\_\_  
 472-76-245-80736-000-000-001  
 Date \_\_\_\_\_



