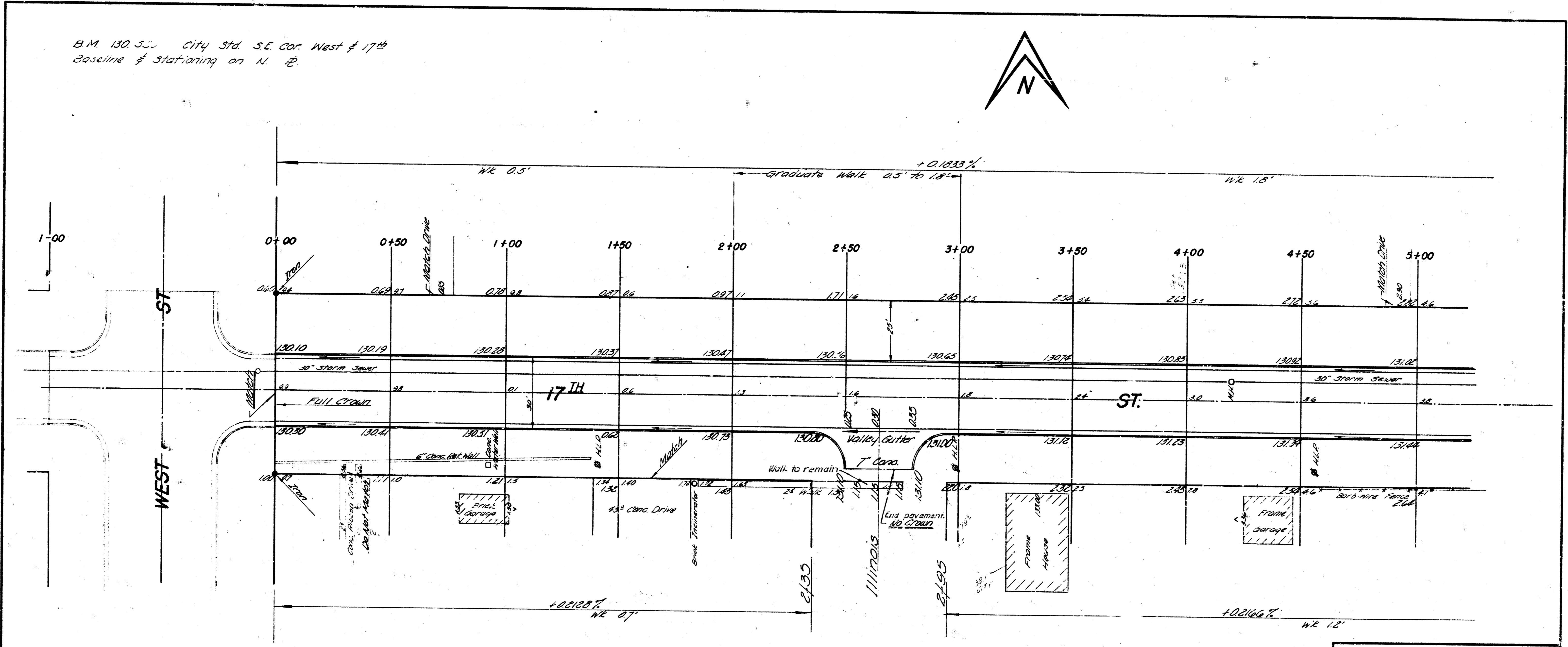
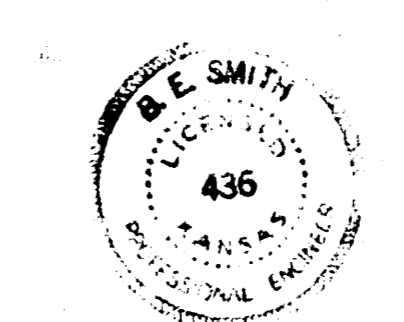
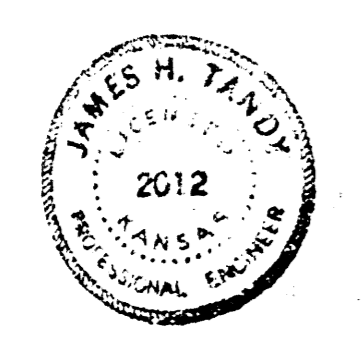


B.M. 130.55 City Std. S.E. Cor. West of 17th  
Baseline of Stationing on N. 17.



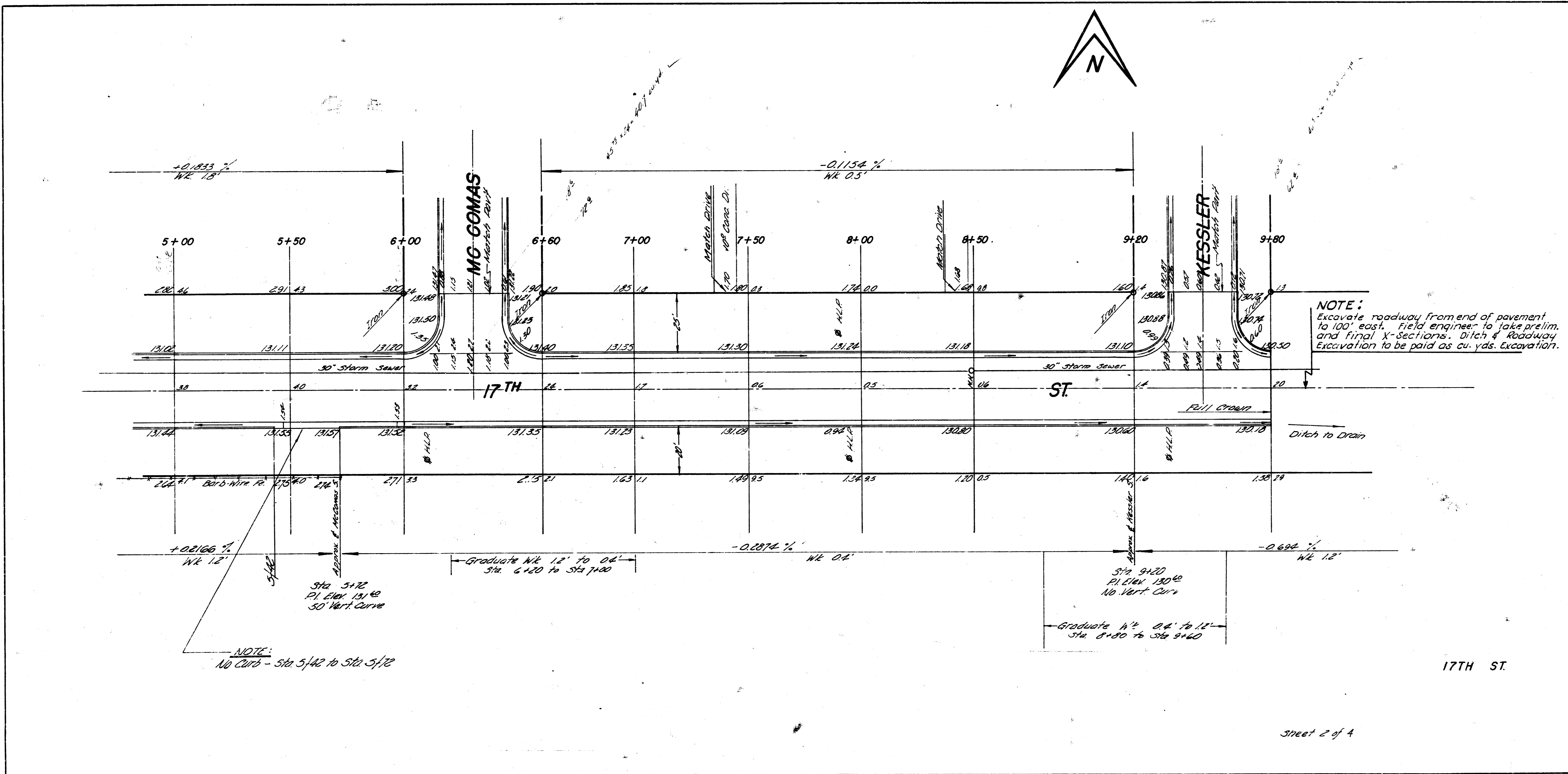
17TH ST  
 11160  
 11160  
 11160

Excavation	
Prop.	City
29572	4070
29571	407
32529	4477



Street 1 of 4

17TH ST  
 E.L. WEST TO E.L. KESSLER  
**26'-2'-30' A.C.**  
 CITY OF WICHITA, KANSAS  
 B.E. SMITH CITY ENGINEER  
 DATE: 1/24/62 PROJ. NO. G18-192



17TH ST

Sheet 2 of 4