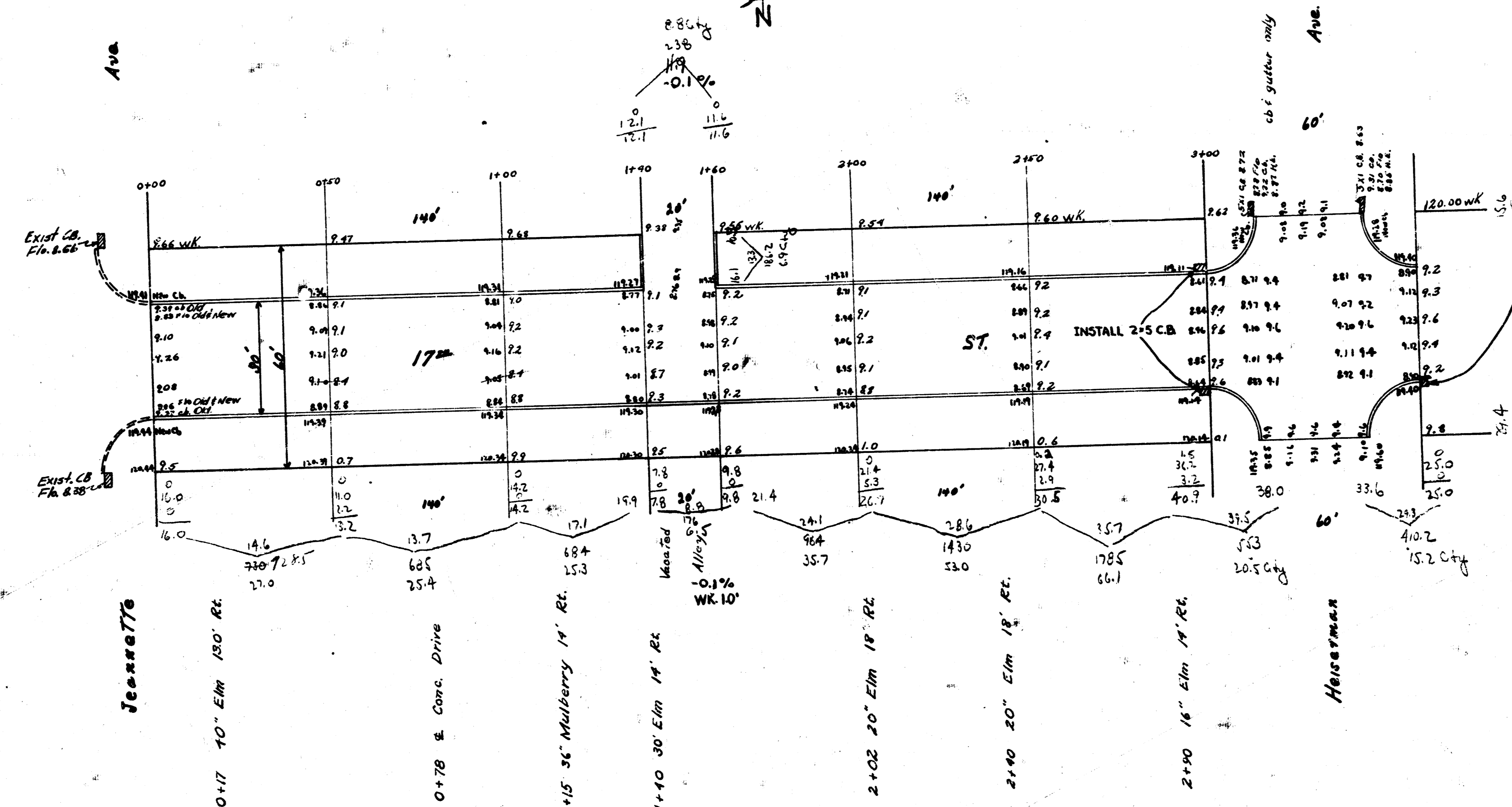


B.M. 11939 'J' in Jones Pt. WK. Co. S.W. Cor 17th & Jeannette

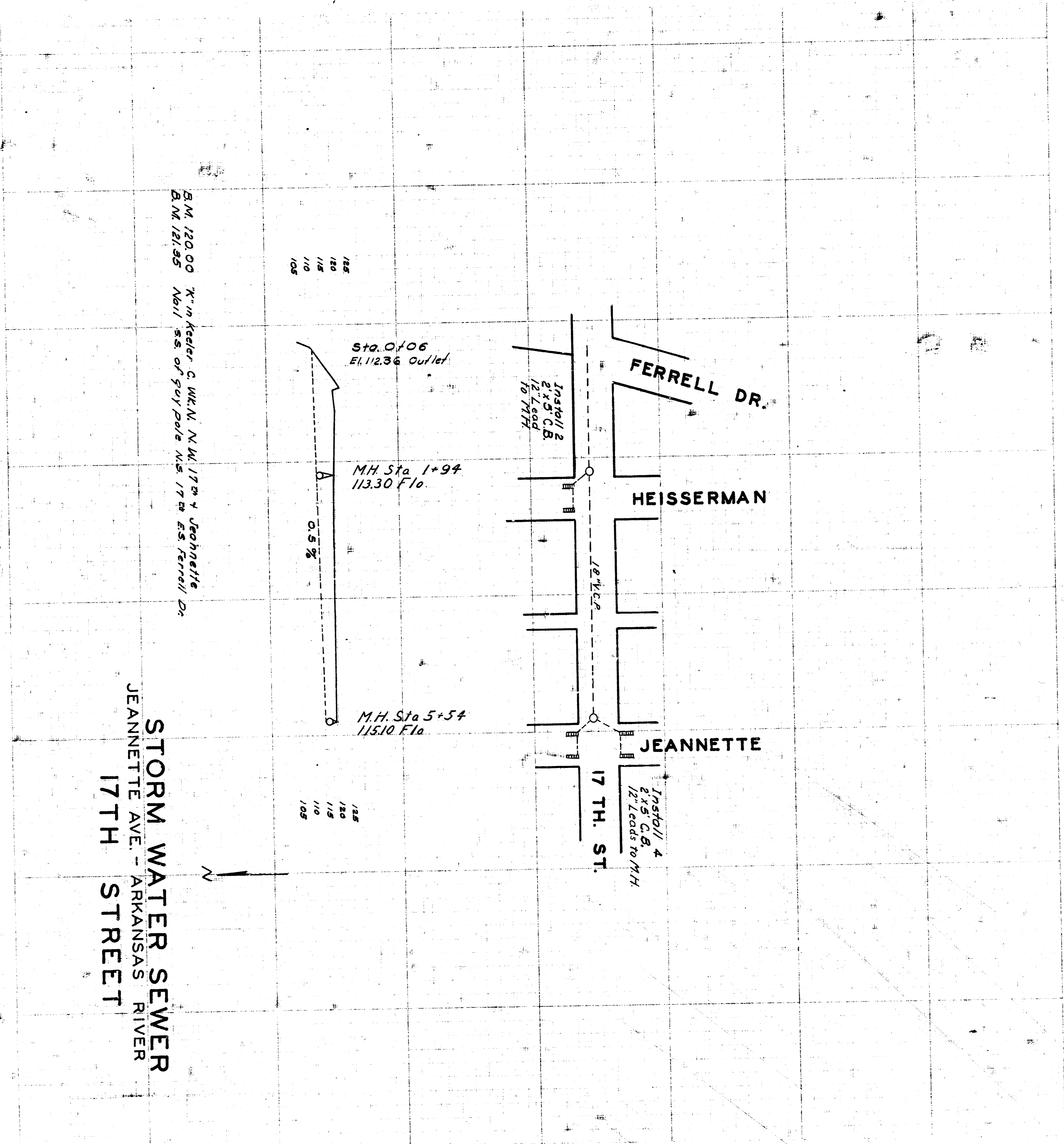
Prop	City
27.0	8.3
25.4	20.5
25.2	15.2
25.3	20.0 + 2.7
6.5	5.9
35.7	10.4 + 10.1
33.0	+10.5
66.1	111.5 Cuyler
239.0	
210.6	
26.4	



NOTE: DO NOT CONSTRUCT C.B. ON E.S. HEISERMAN SO IF A DECISION IS REACHED AS TO PAVING HEISERMAN SO. C.B. CONST. HAS NOT BEGUN ON 17th ST.

17th ST.  
 E.L. Jeannette - E.L. Heiserman  
 50' Conc. & Cb.  
 City of Wichita, Kansas  
 L.K. White City Engineer  
 July 1948 Project C18-92

4 14 2 14



Sta. 0+06  
El. 112.36 Outlet

M.H. Sta. 1+94  
113.30 F.L.

M.H. Sta. 5+54  
115.10 F.L.

1/25  
1/20  
1/15  
1/10  
1/5

1/25  
1/20  
1/15  
1/10  
1/5

Install 2  
2' x 5' C.B.  
1/2 Leads  
to MH

Install 4  
2' x 5' C.B.  
1/2 Leads  
to MH

B.M. 120.00 Corner of W.K.N. N.W. 17th & Jeannette  
B.M. 121.95 North ss. of poly pipe N.W. 17th St. Ferrell Dr.

STORM WATER SEWER  
JEANNETTE AVE. - ARKANSAS RIVER  
17TH STREET

