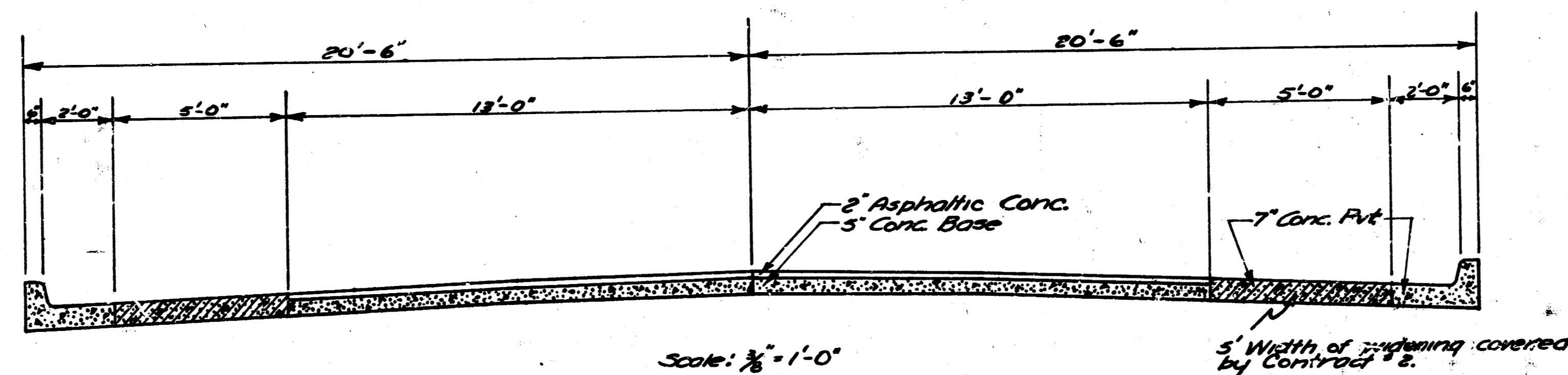
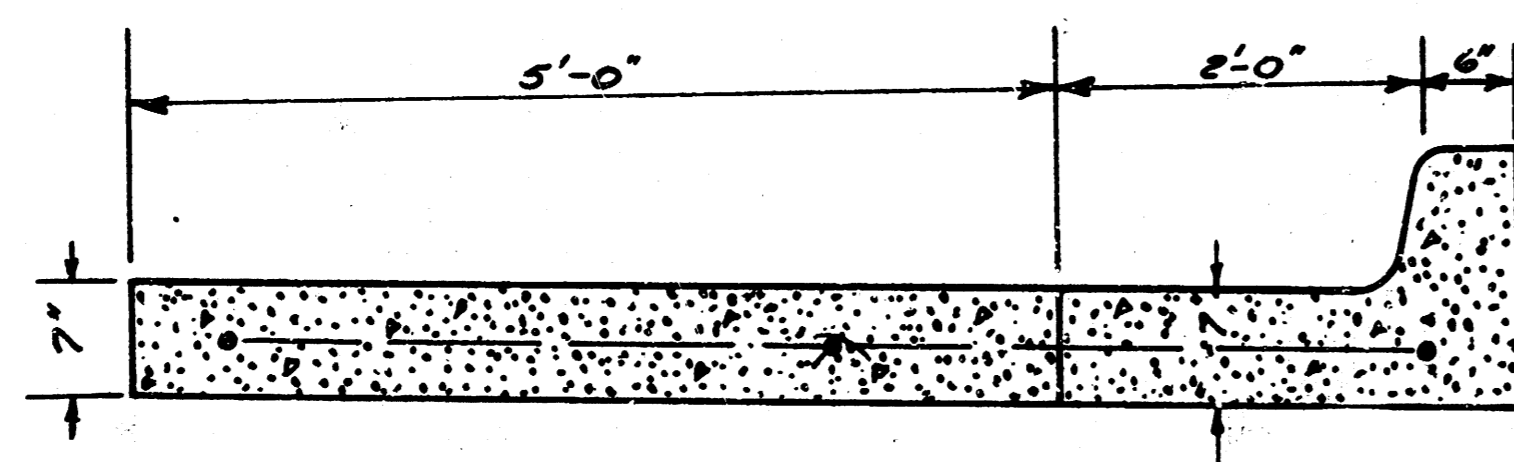


17 TH ST.  
 E.L. HYDRAULIC-WL. HILLSIDE  
 PAVING & CB. & GTR.



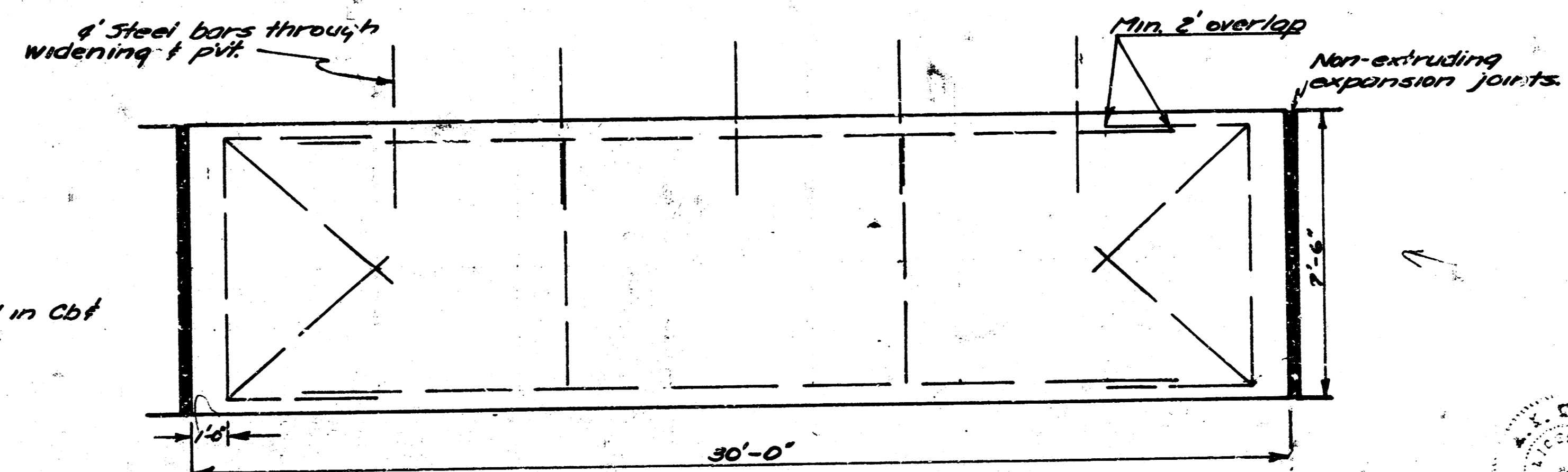
Scale:  $\frac{1}{8}" = 1'-0"$

TYPICAL SECTION

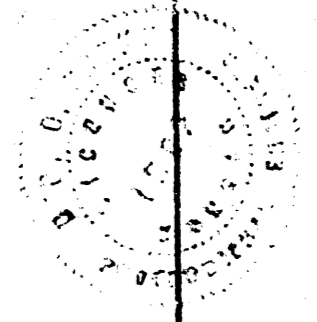


Scale: 1" = 1'-0"

DETAILS of CURB & GUTTER



Scale:  $\frac{1}{8}" = 1'-0"$









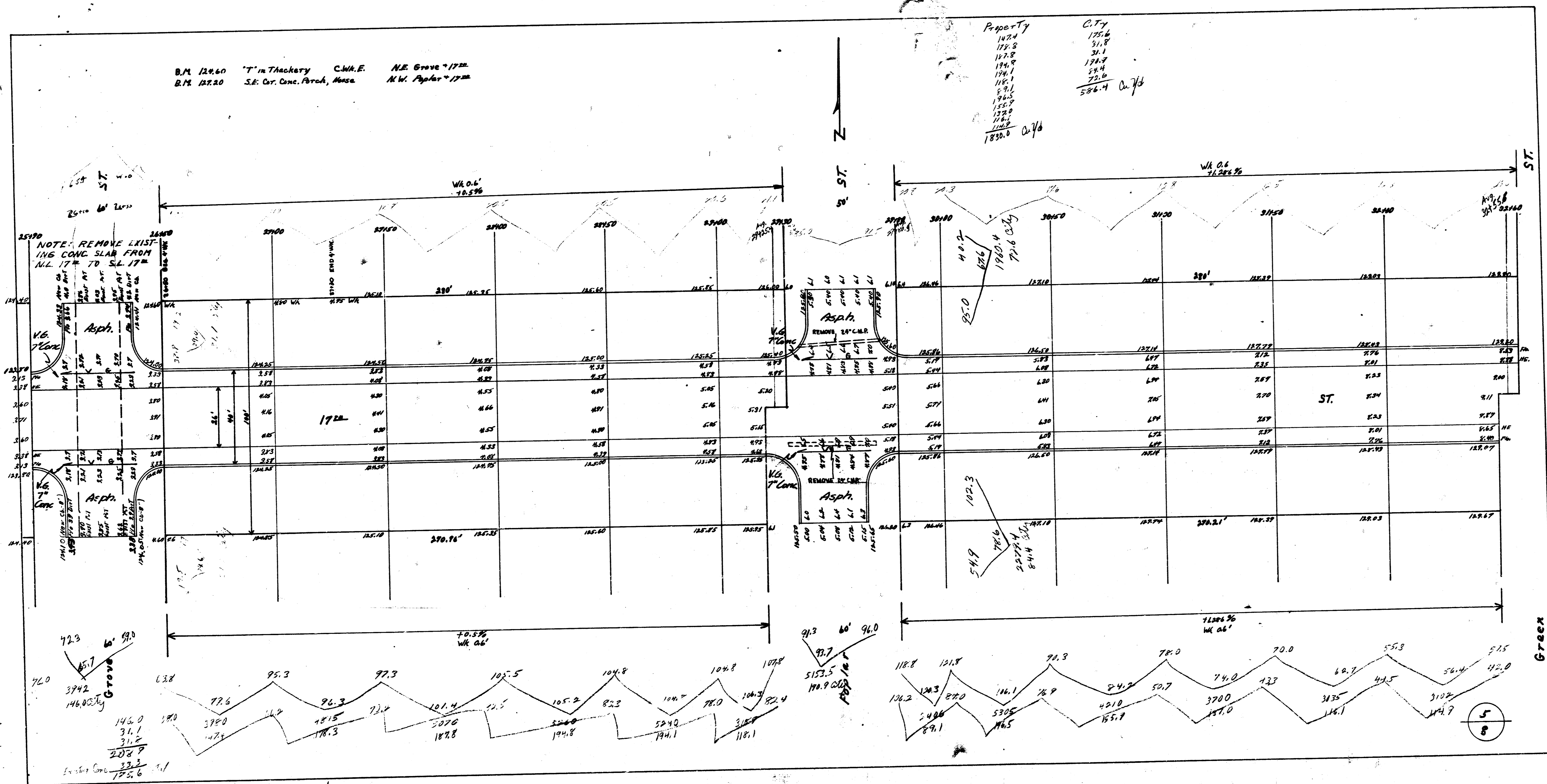


B.M. 12440 T. in Thackery C.W.A.E. N.E. Grove 1722  
 B.M. 12720 S.E. Cr. Conc. Arch. N.W. Poplar 1722

Property  
 1474  
 128.8  
 127.8  
 124.8  
 124.1  
 116.1  
 89.1  
 146.5  
 152.5  
 132.0  
 122.8  
 122.8  
 1830.0

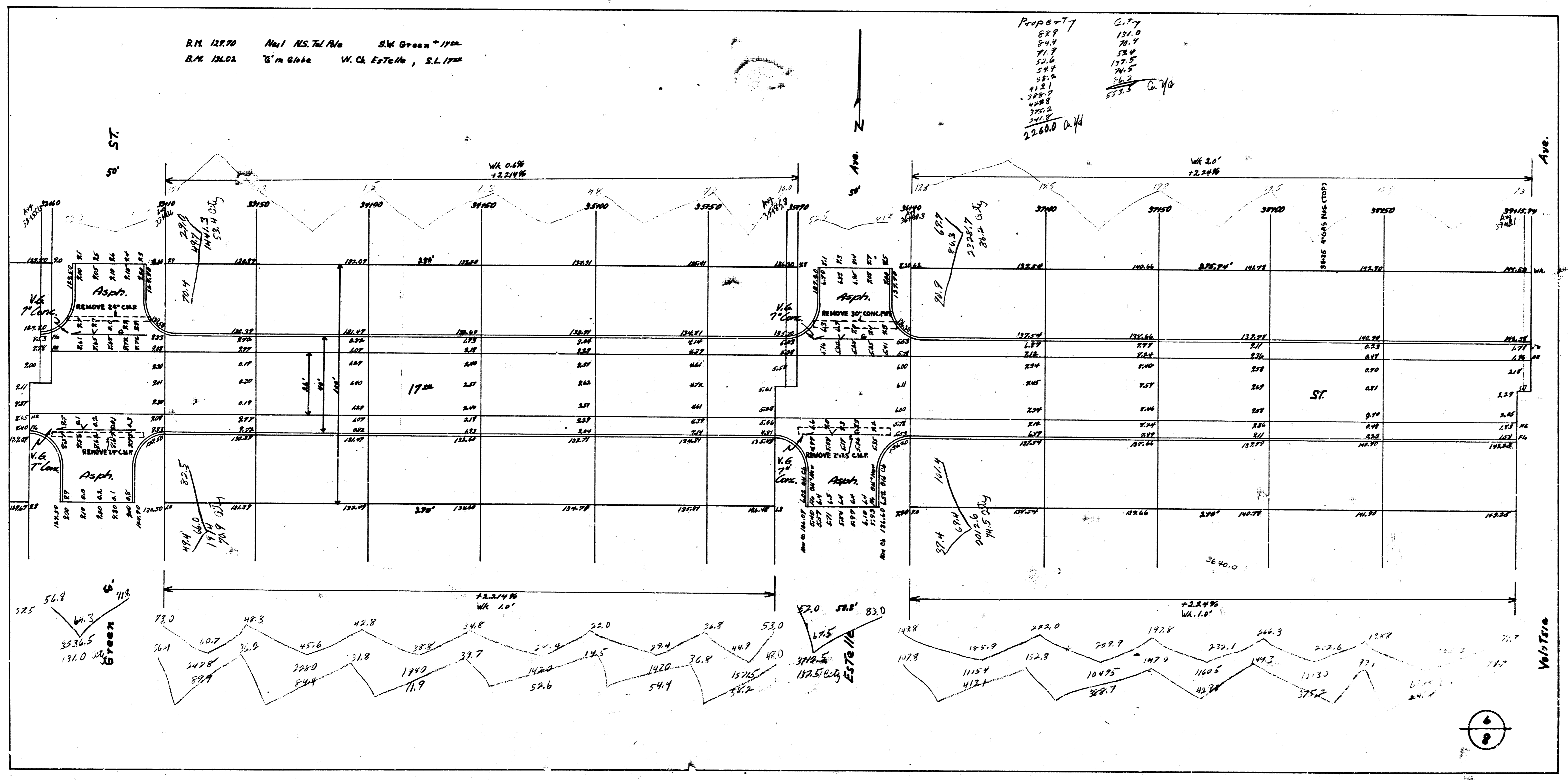
City  
 175.6  
 31.8  
 31.1  
 124.9  
 24.4  
 72.6  
 586.7

0.74



R.M. 128.70 Nat'l NS. Tel. Bldg S.W. Green - 17th  
 R.M. 128.02 'G'm G'ble W. Ch. Establs, S.L. 17th

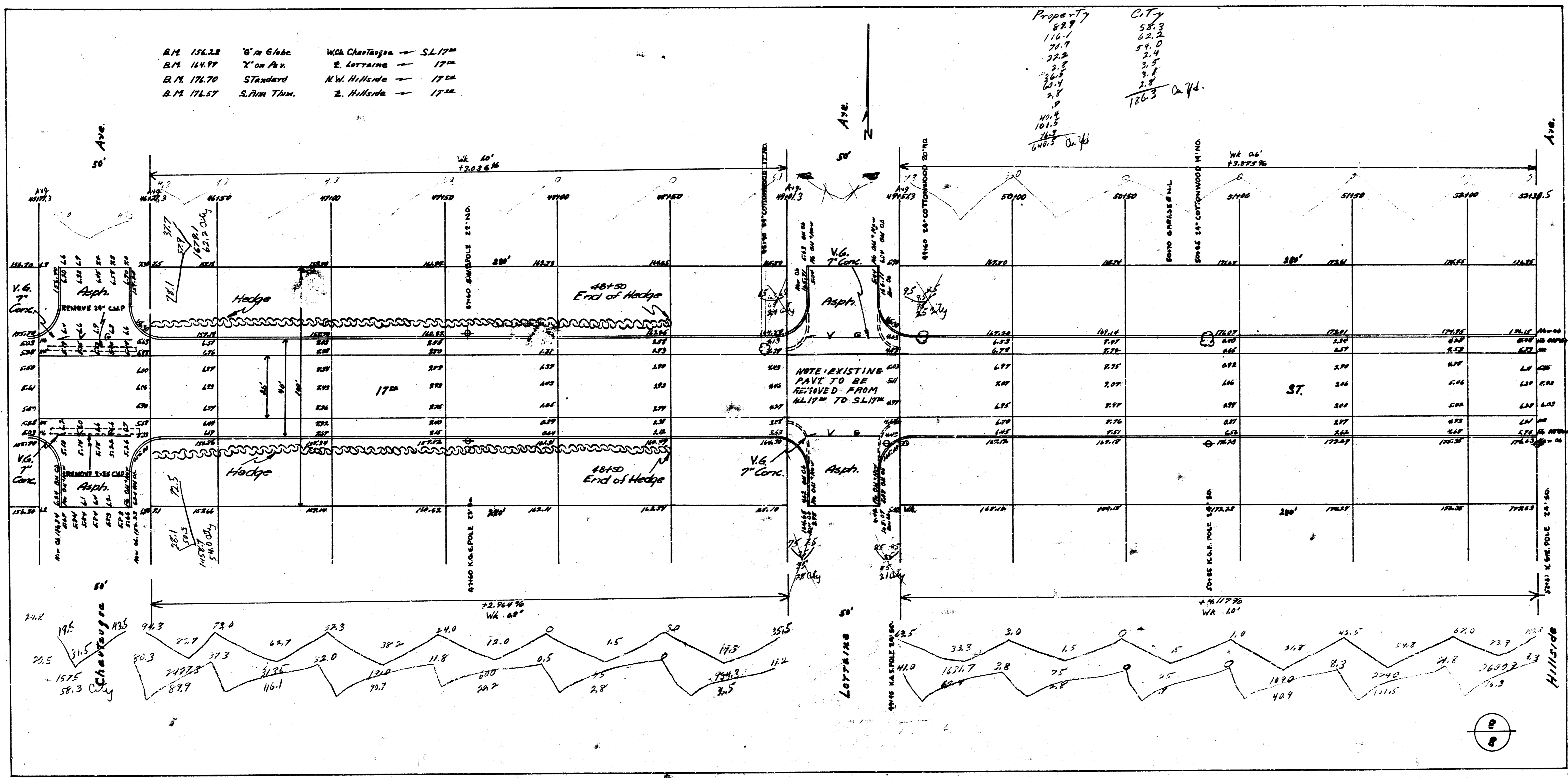
Property  
 829 131.0  
 849 70.7  
 719 58.4  
 526 177.5  
 549 74.5  
 589 26.5  
 413 14.5  
 285.7  
 408.8  
 700.2  
 201.8  
 2,600.0 C.A.H.



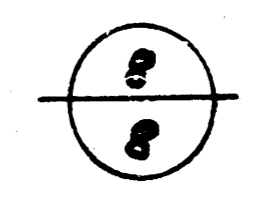


B.M. 156.23 '0' in Globe W. Chastagne - S.L. 17M  
 B.M. 144.99 'X' on Pav. E. Lorraine - 17M  
 B.M. 176.70 Standard N.W. Hillside - 17M  
 B.M. 176.57 S. Pin Tam. E. Hillside - 17M

Property City  
 88.8 58.3  
 116.1 62.2  
 70.7 54.0  
 22.2 3.4  
 21.5 3.5  
 60.4 3.8  
 2.8  
 10.4  
 101.5  
 24.8  
 648.3 On Yd.  
 186.3 On Yd.

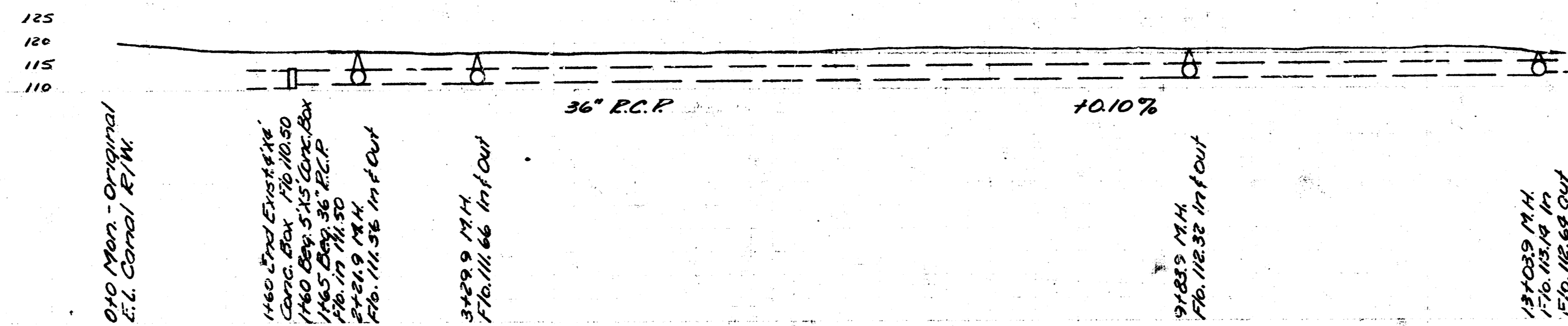
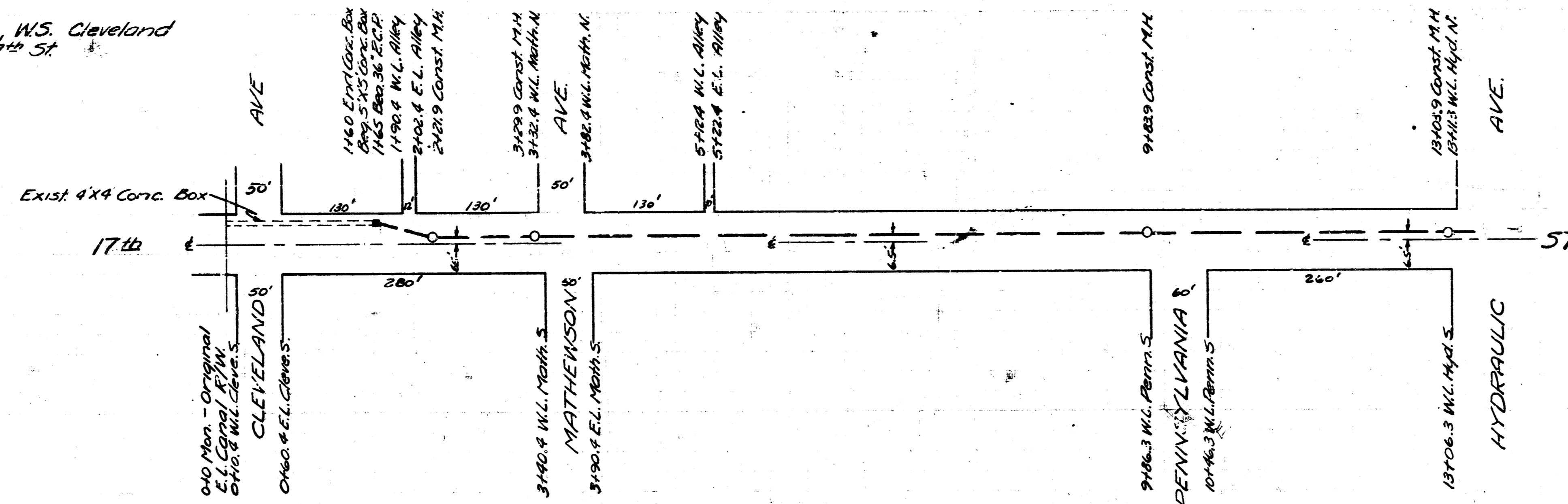


317  
 331  
 30

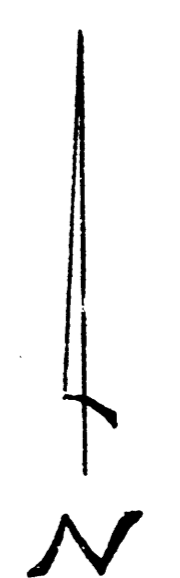
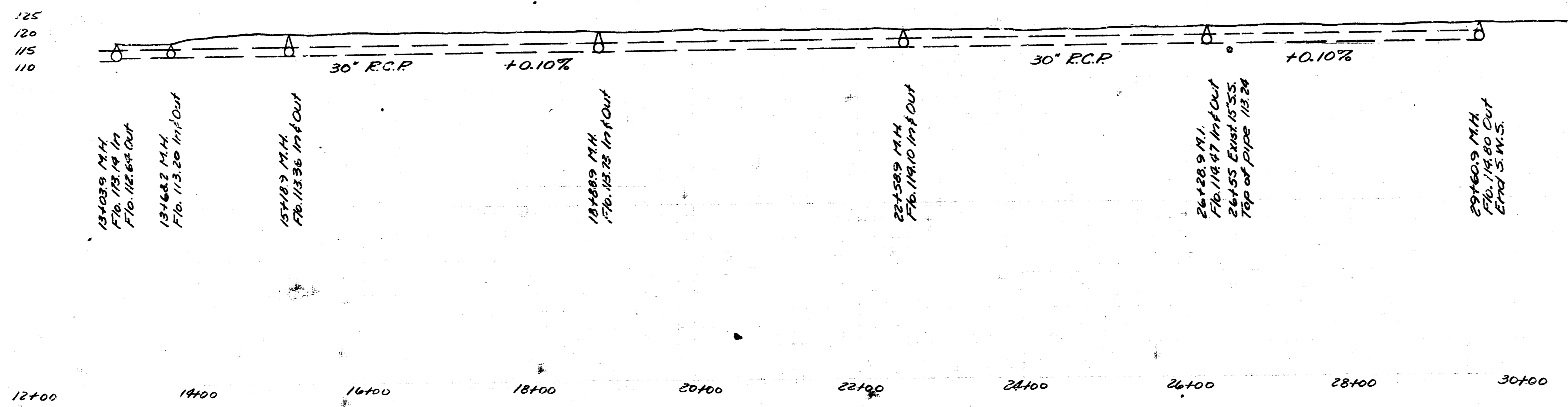
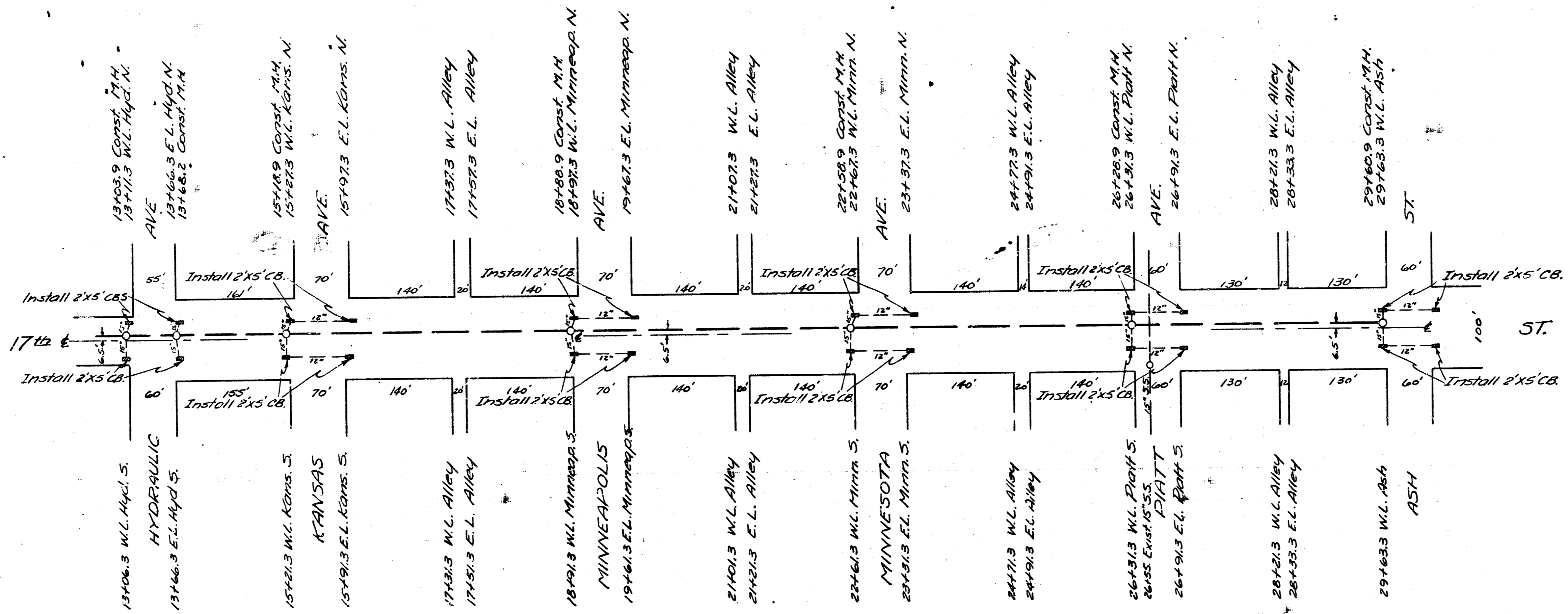


B.M. 122.36 "X" on S.E. wing canal bridge, W.S. Cleveland  
 B.M. 117.25 Standard N.E. Hydraulic & 17th St

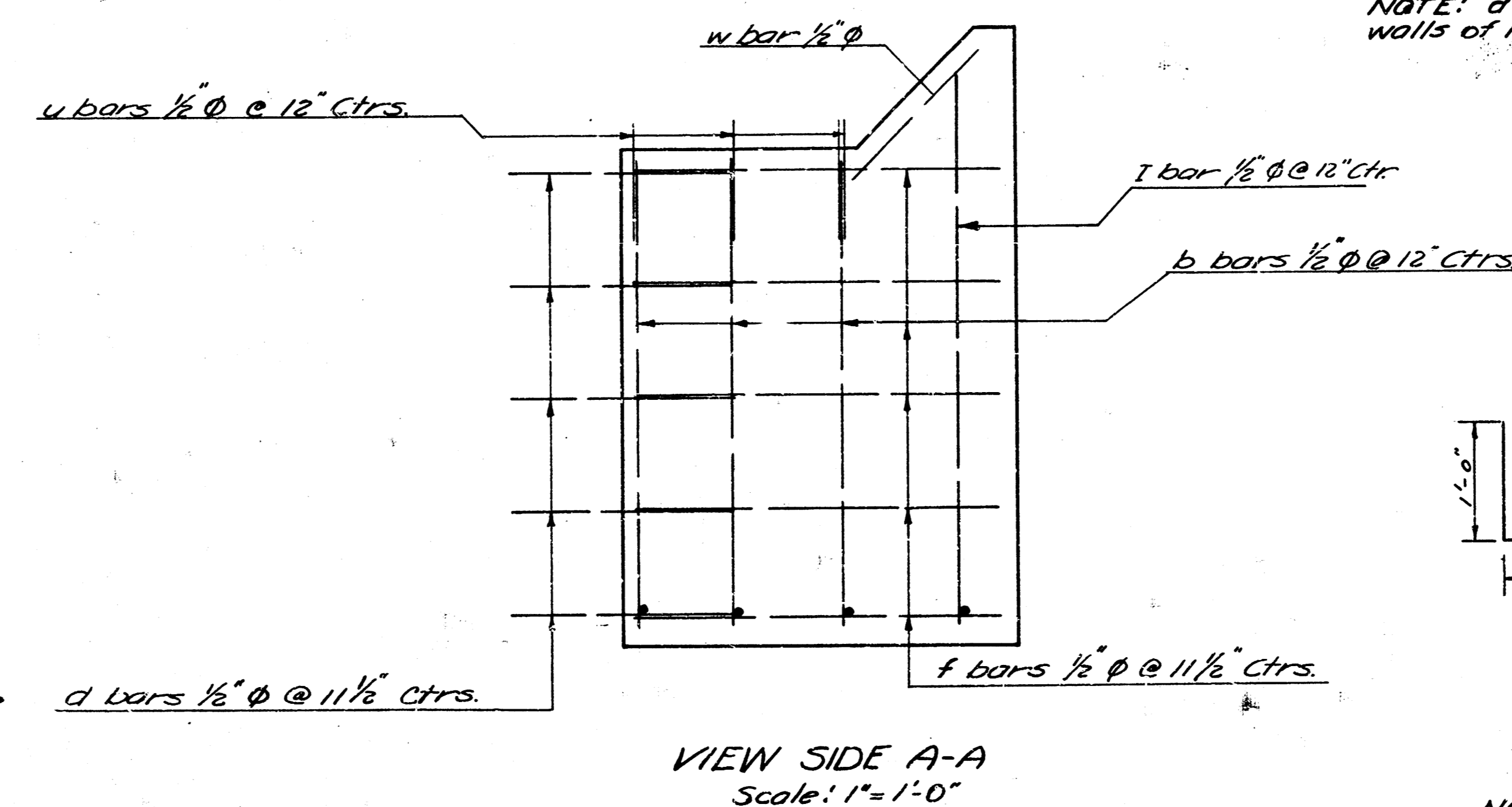
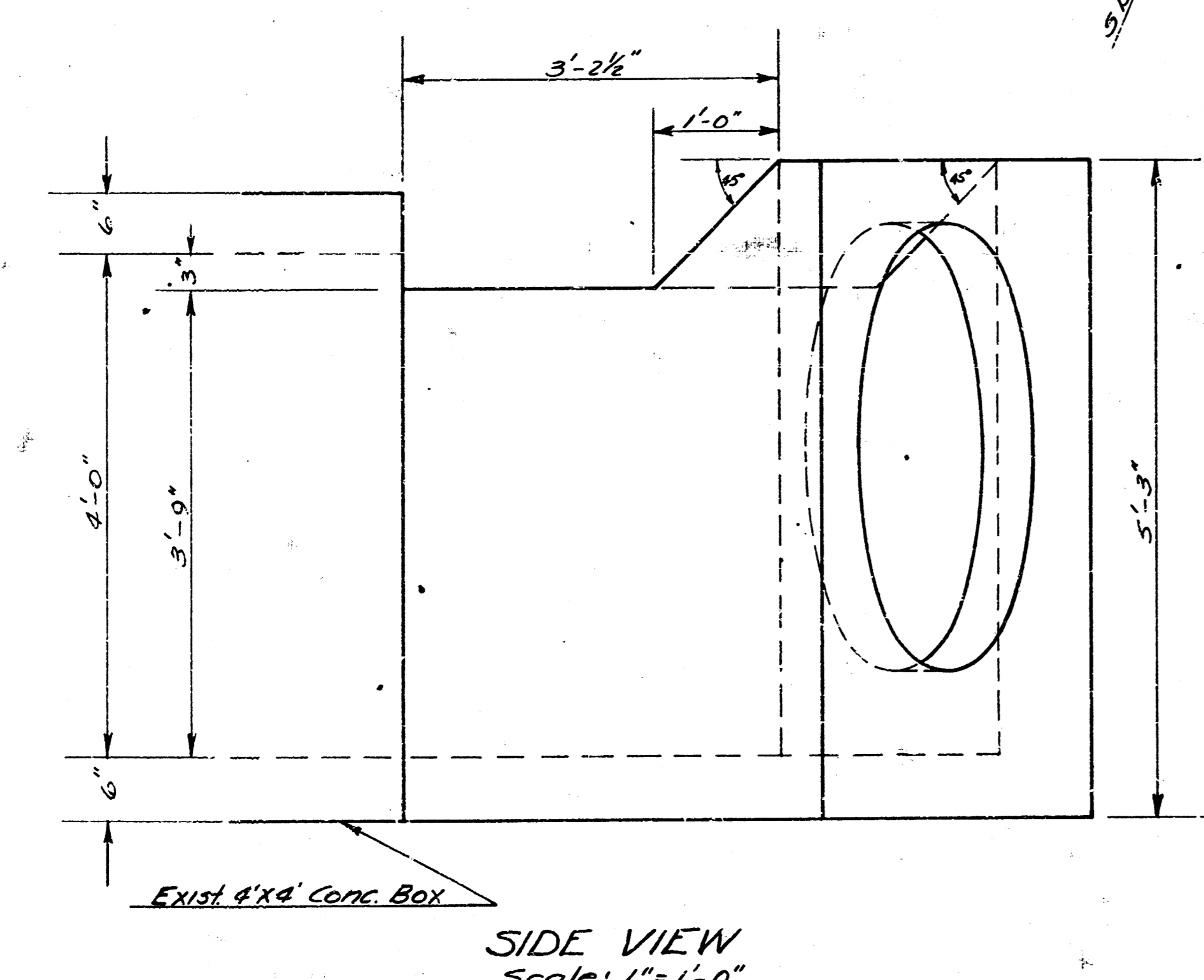
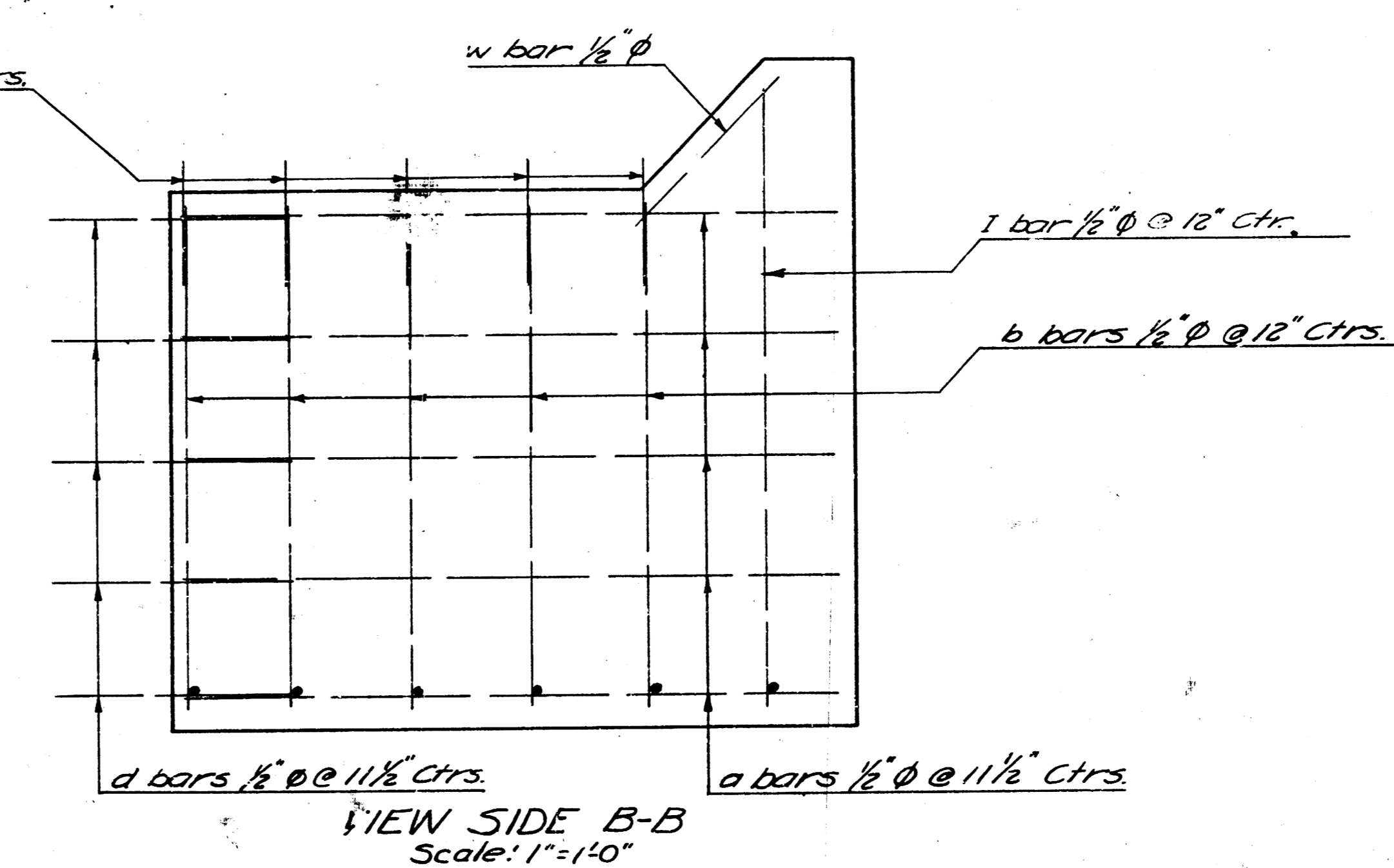
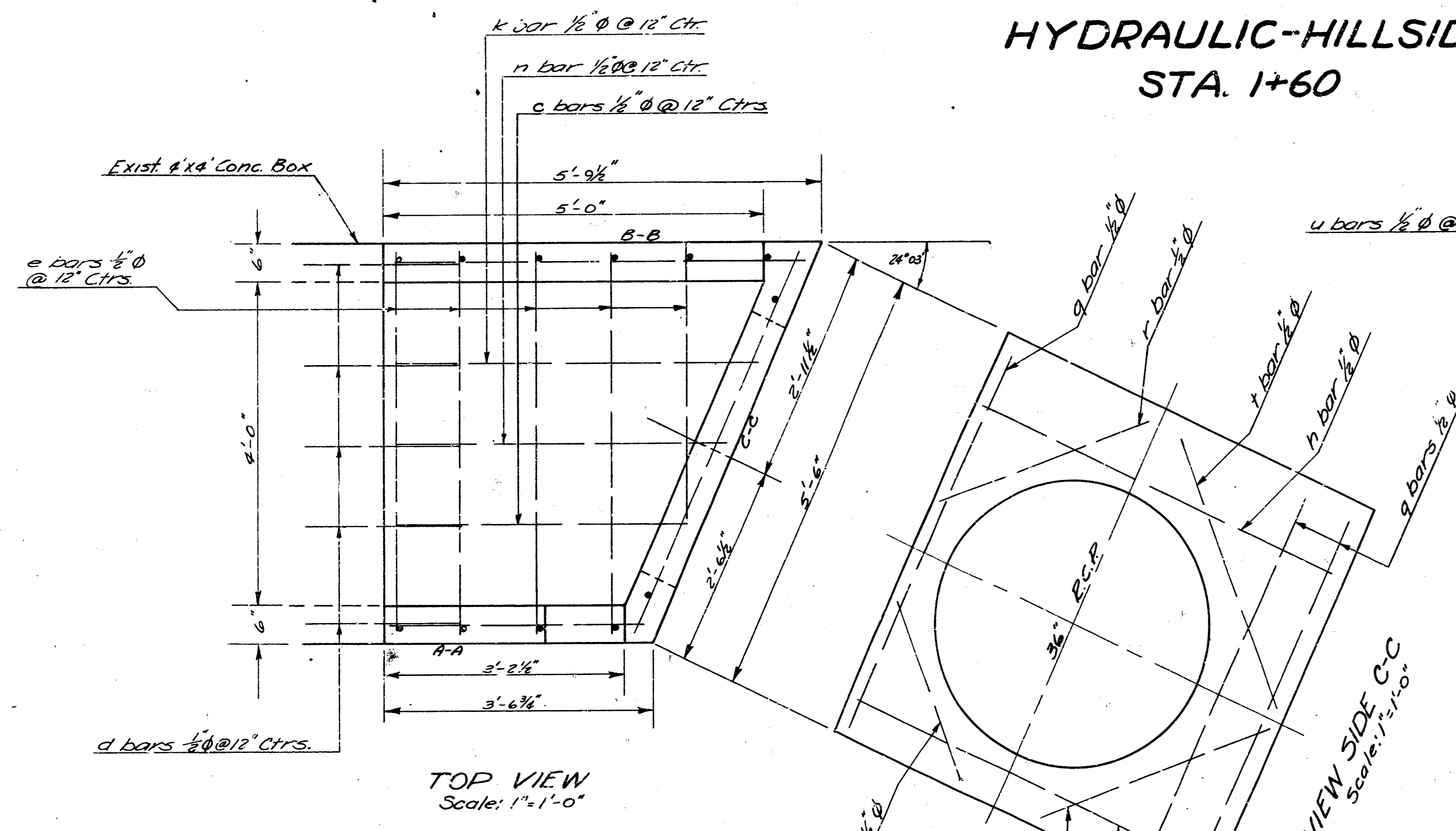
NOTE FOR FIELD ENGINEER  
 & CONTRACTOR:  
 Special care to be given to  
 preserve monuments at  
 all intersections of streets.



17th St  
 Incidental Drainage  
 City of Wichita, Kans.  
 L.K. White City Engineer  
 March 1948 Proj. No. C17-154



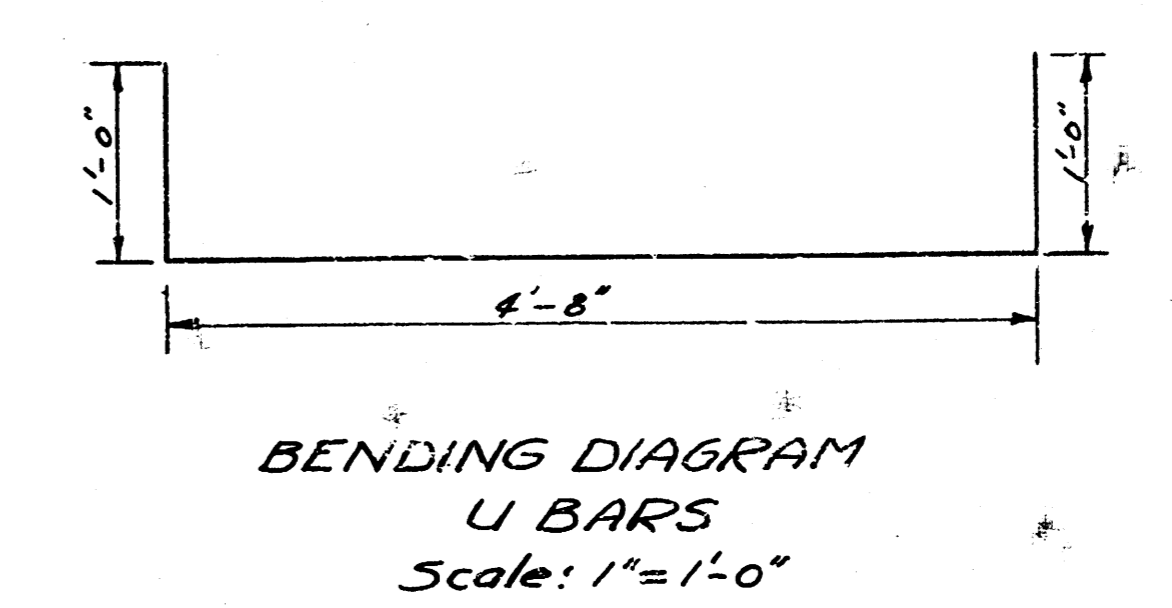
**DETAILS OF OPEN TOP JUNCTION BOX**  
**INCIDENTAL DRAINAGE - 17<sup>th</sup> ST.**  
**HYDRAULIC-HILLSIDE**  
**STA. 1+60**



**BILL of MATERIALS**

BAR	a	b	c	d	e	f	g	h	i	k	n	r	s	t	u	v	w
NO.	5	8	1	13	4	5	3	2	2	1	1	1	1	1	5	1	2
LENGTH	5'-6"	3'-0"	3'-0"	2'-0"	4'-4"	3'-4"	5'-2"	5'-0"	4'-9"	4'-9"	4'-8"	3'-0"	2'-5"	3'-7"	6'-6"	3'-3"	1'-8"
TOTAL LB STEEL	174	208	4	264	164	164	144	104	92	49	44	30	25	37	33	3	34
TOTAL LB STEEL = 150 LBS.																	
CLASS "A" CONC. = 1.4 Cu. Yds.																	

NOTE: d bars are dowel bars to join walls of new box to walls of existing 4'x4' conc. box.



NOTE: U bars across open top of box to be 3" above top of box.