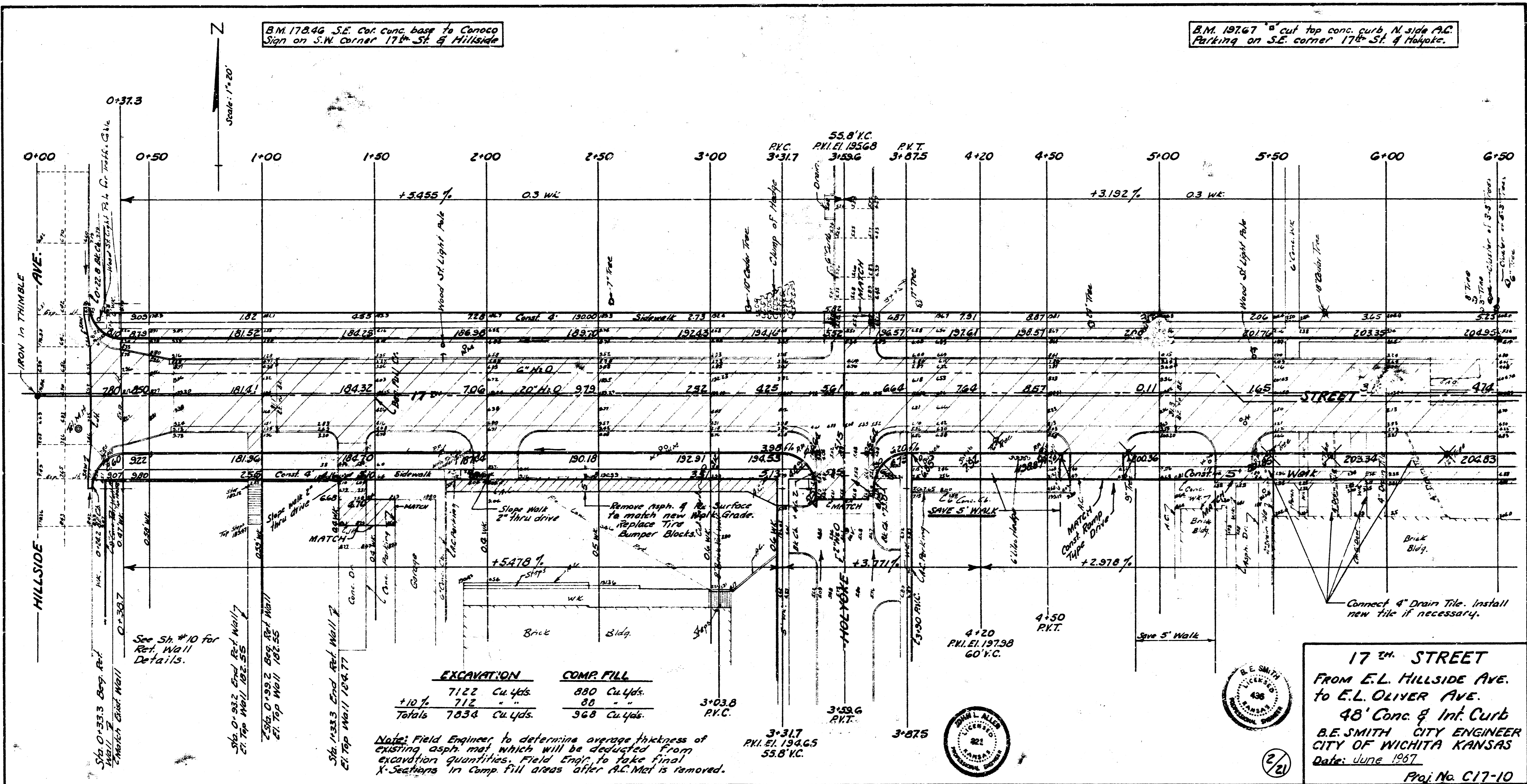


SURVY 178
 PLAN 444
 EX. CIVIL
 1935



B.M. 178.46 SE. Cor. Conc. base to Conoco Sign on S.W. corner 17th St. & Hillside

B.M. 197.67 cut top conc. curb N. side P.C. Parking on S.E. corner 17th St. & Maple.

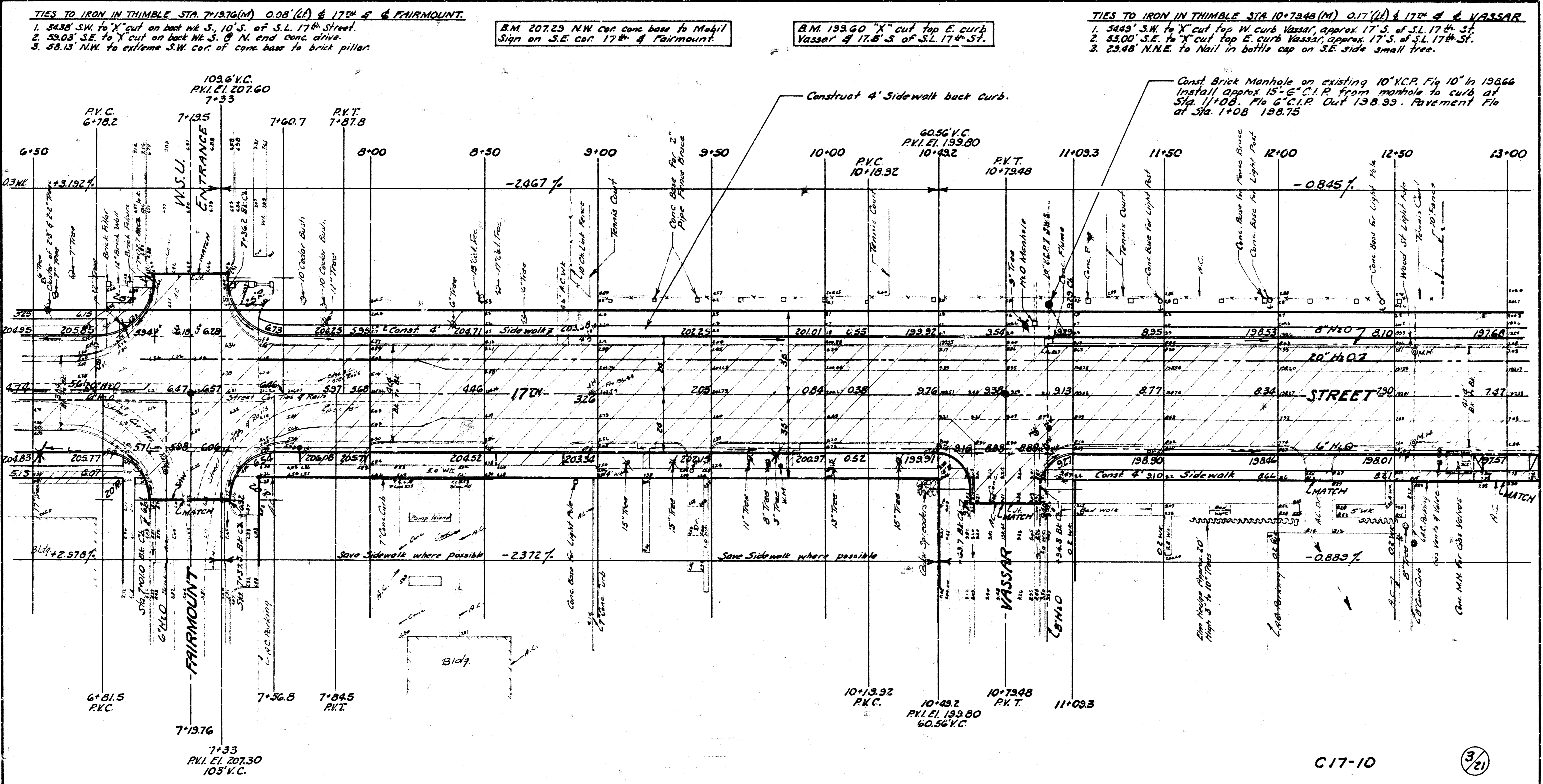
	EXCAVATION	COMP. FILL
+10%	7122 Cu. Yds.	890 Cu. Yds.
	712	80
Totals	7836 Cu. Yds.	968 Cu. Yds.

Note: Field Engineer to determine average thickness of existing asphalt which will be deducted from excavation quantities. Field Eng. to take final X-sections in comp. fill areas after P.C. Mat is removed.

17th STREET
 FROM E.L. HILLSIDE AVE.
 TO E.L. OLIVER AVE.
 48" Conc. & Int. Curb
 B.E. SMITH CITY ENGINEER
 CITY OF WICHITA KANSAS
 Date: June 1937
 Proj. No. C17-10



2/21



TIES TO IRON IN THIMBLE STA. 71376(M) 0.08' (A) @ 17th & FAIRMOUNT.
 1. 5438' S.W. to 'X' cut on back W.C. 10' S. of S.L. 17th Street.
 2. 53.03' S.E. to 'X' cut on back W.C. 8' N. end conc. drive.
 3. 53.13' N.W. to extreme S.W. cor. of conc. base to brick pillar.

B.M. 20723 NW cor. conc. base to Mobil Sign on S.E. cor. 17th & Fairmount.

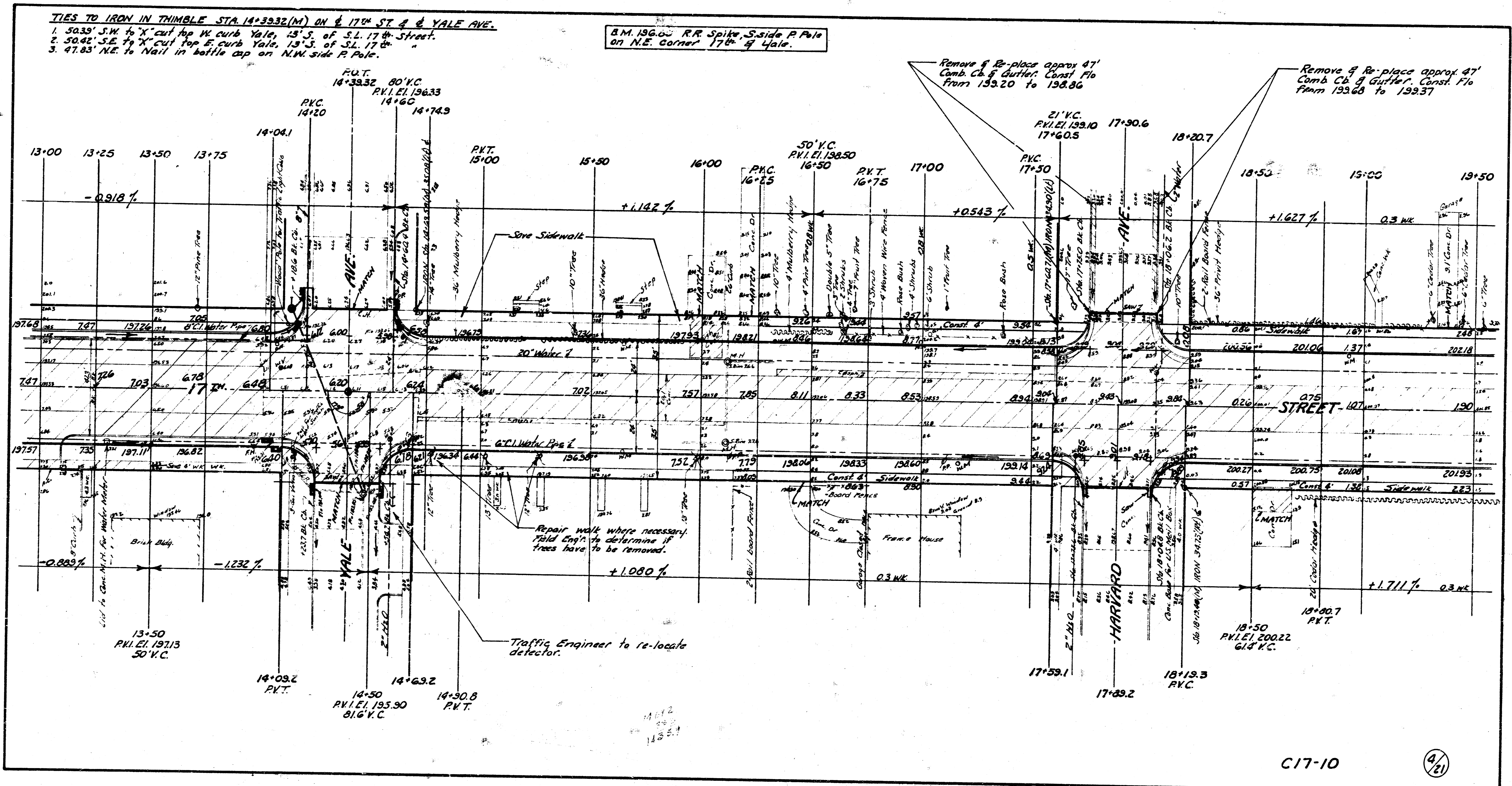
B.M. 19360 'X' cut top E. curb Vassar & 17th S of S.L. 17th St.

TIES TO IRON IN THIMBLE STA. 107348(M) 0.17' (A) @ 17th & VASSAR
 1. 5449' S.W. to 'X' cut top W. curb Vassar, approx. 17' S. of S.L. 17th St.
 2. 53.00' S.E. to 'X' cut top E. curb Vassar, approx. 17' S. of S.L. 17th St.
 3. 23.48' N.N.E. to Nail in bottle cap on S.E. side small tree.

Const Brick Manhole on existing 10" V.C.P. Fig 10" in 19866
 Install approx 15'-6" C.I.P. from manhole to curb at Sta. 1+08. Plo 6" C.I.P. Out 138.93. Pavement Flo at Sta. 1+08 198.75

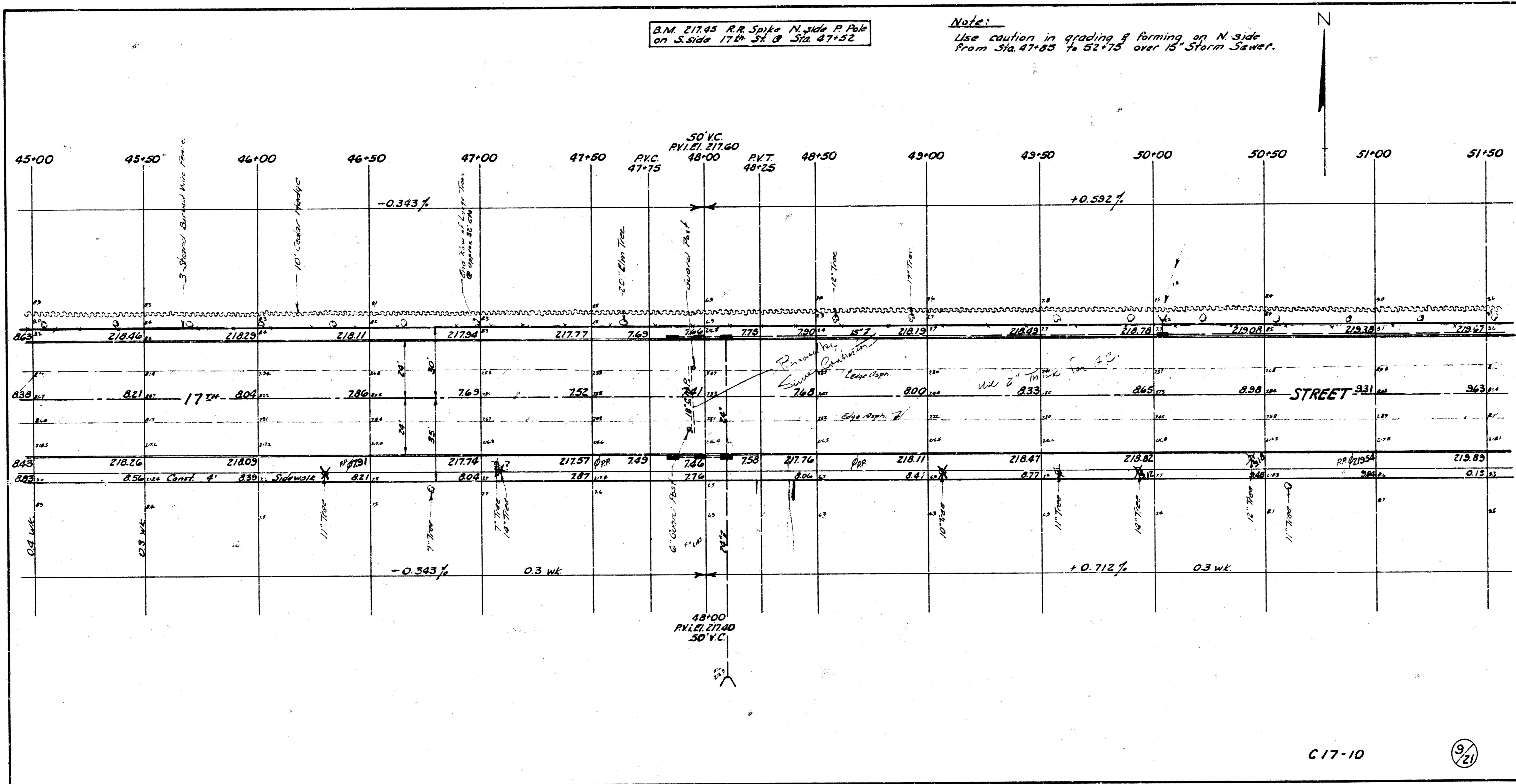
TIES TO IRON IN THIMBLE STA. 14+39.32 (M) ON E 17th ST & YALE AVE.
 1. 50.33' S.W. to 'X' cut top W curb Yale, 13' S. of S.L. 17th Street.
 2. 50.42' S.E. to 'X' cut top E curb Yale, 13' S. of S.L. 17th Street.
 3. 47.83' N.E. to Nail in bottle cap on N.W. side P. Pole.

B.M. 196.00 R.R. Spike, S-side P. Pole on N.E. corner 17th & Yale.

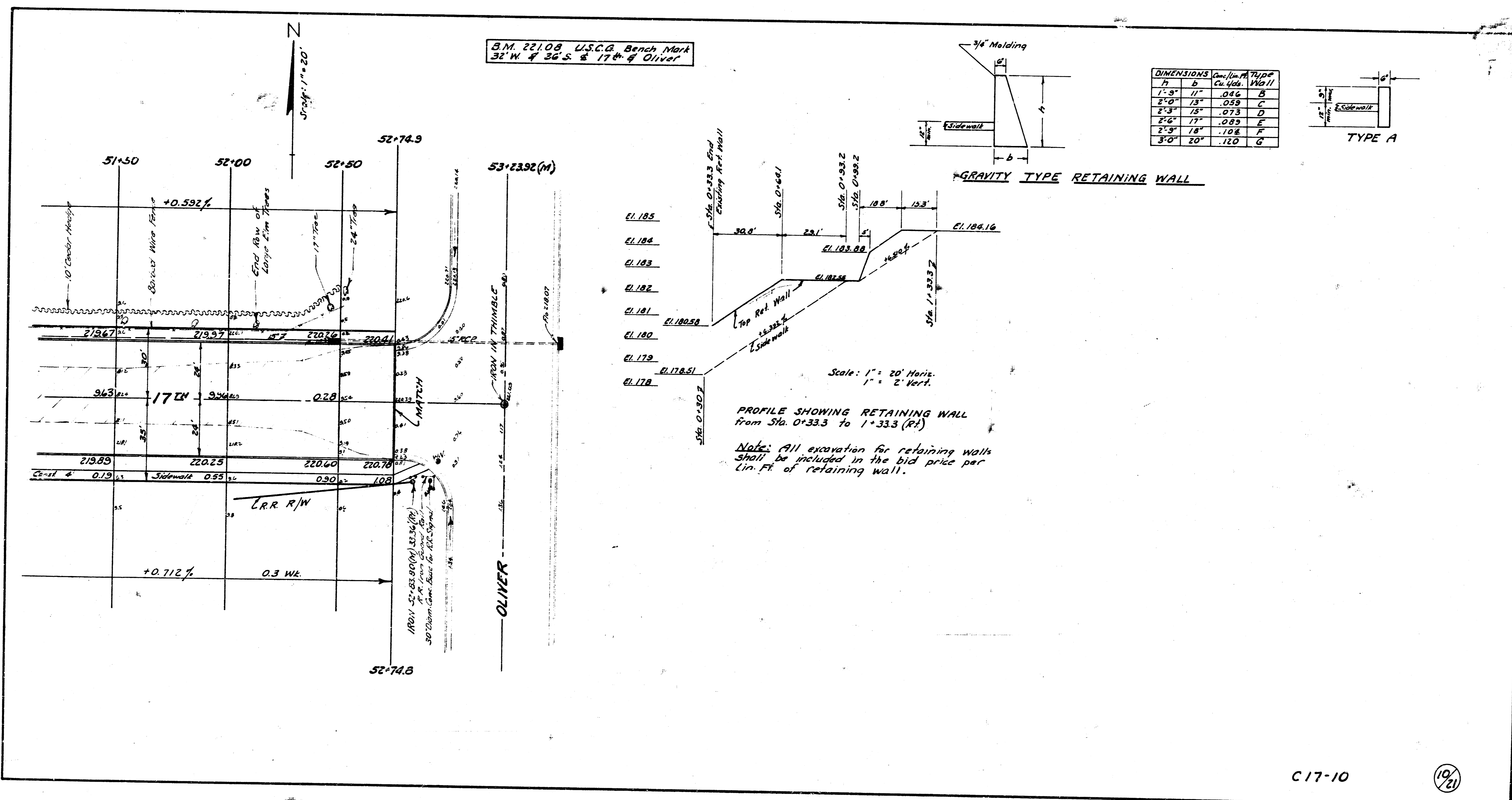


B.M. 217.95 R.R. Spike N. side P. Pole
on S. side 17th St. @ Sta. 47+52

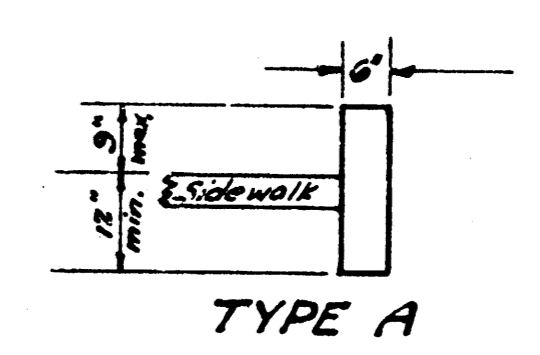
Note:
Use caution in grading & forming on N. side
From Sta. 47+85 to 52+75 over 15" Storm Sewer.



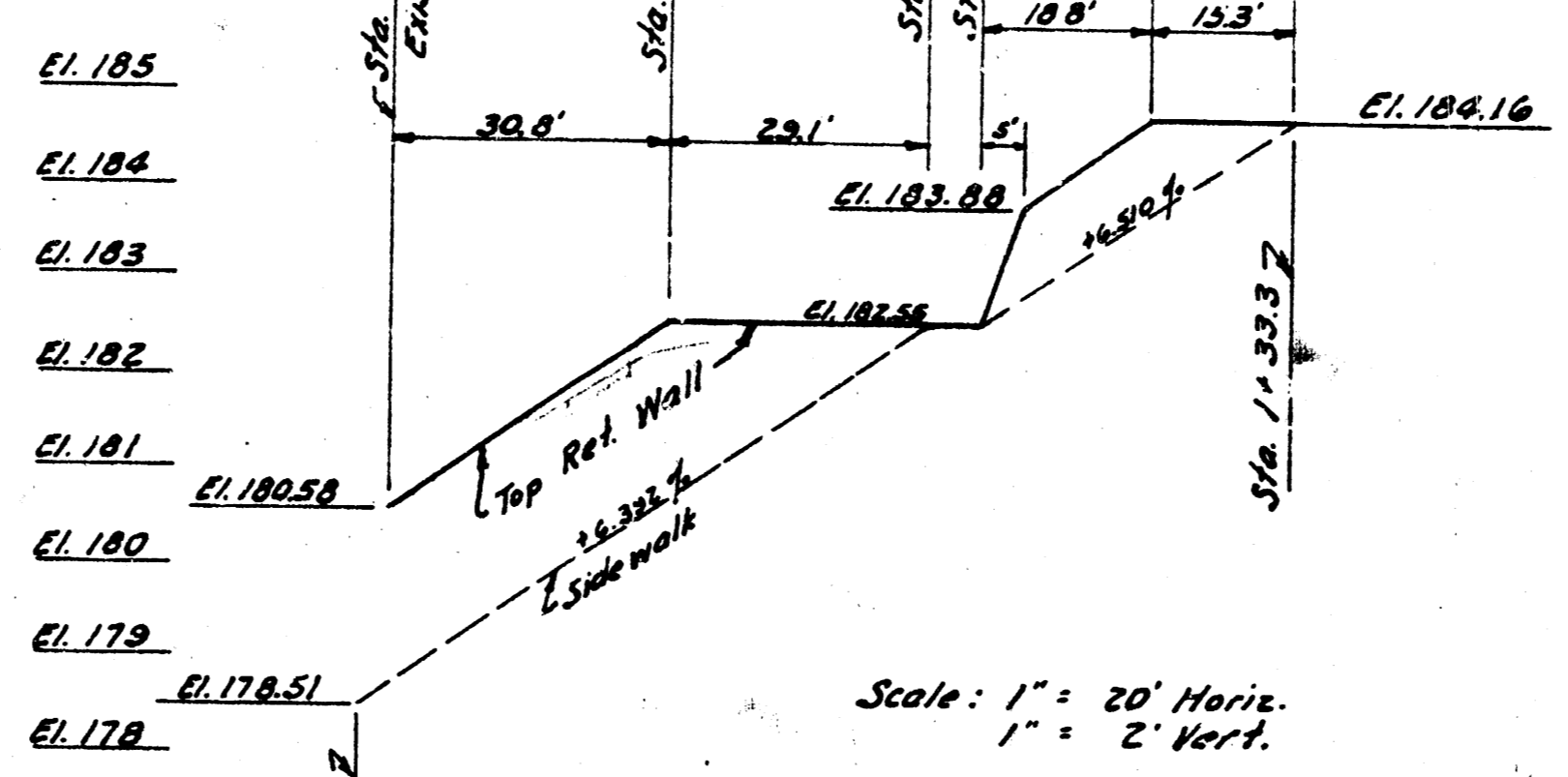
B.M. 221.08 U.S.C.G. Bench Mark
32° W & 36° S & 17th & Oliver



DIMENSIONS		Quantity	Type
h	b	Cu. Yds.	Wall
1'-3"	11"	.046	B
2'-0"	13"	.059	C
2'-3"	15"	.073	D
2'-6"	17"	.089	E
2'-9"	18"	.108	F
3'-0"	20"	.120	G



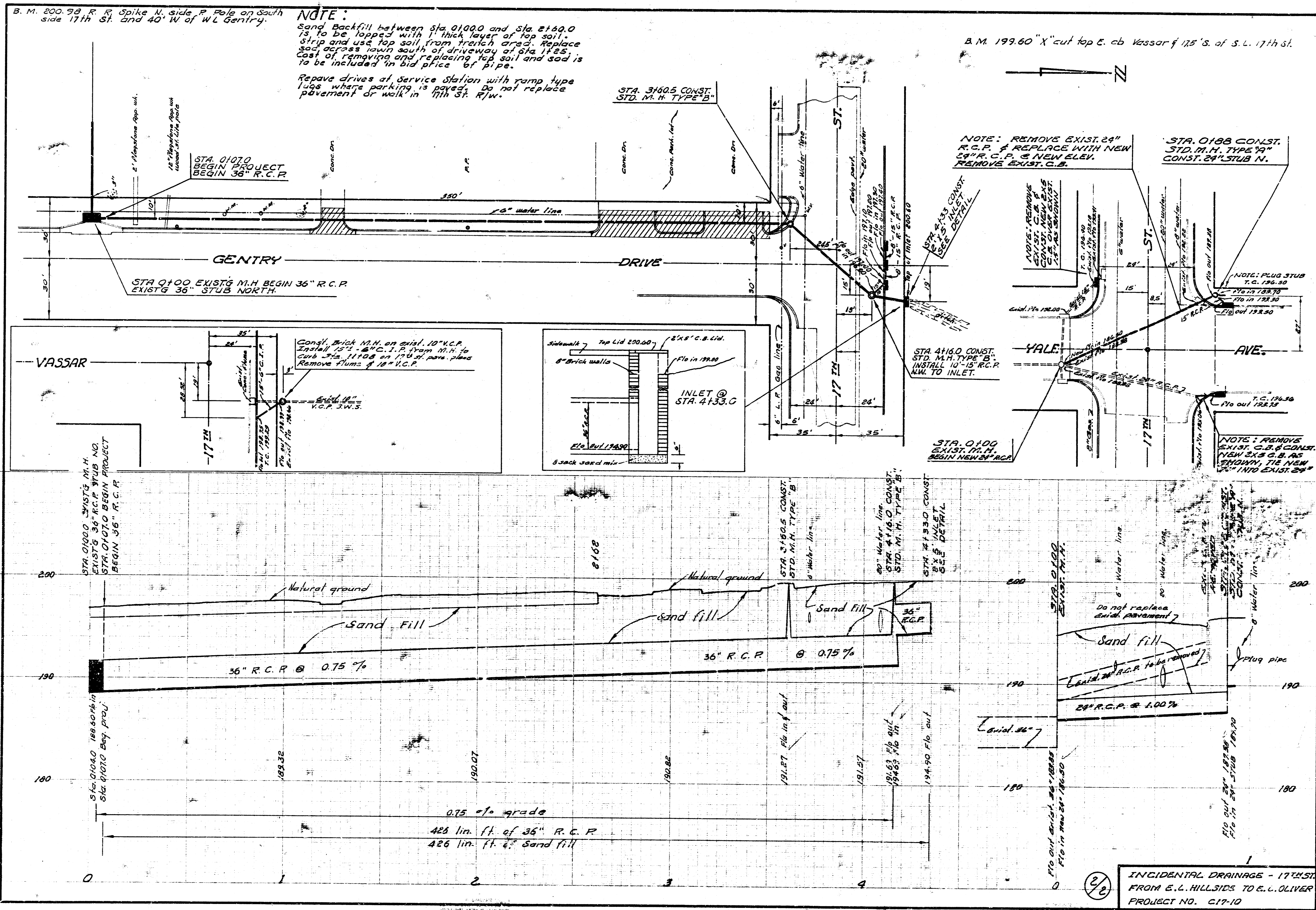
GRAVITY TYPE RETAINING WALL



Scale: 1" = 20' Horiz.
1" = 2' Vert.

PROFILE SHOWING RETAINING WALL
from Sta. 0+33.3 to 1+33.3 (Rt)

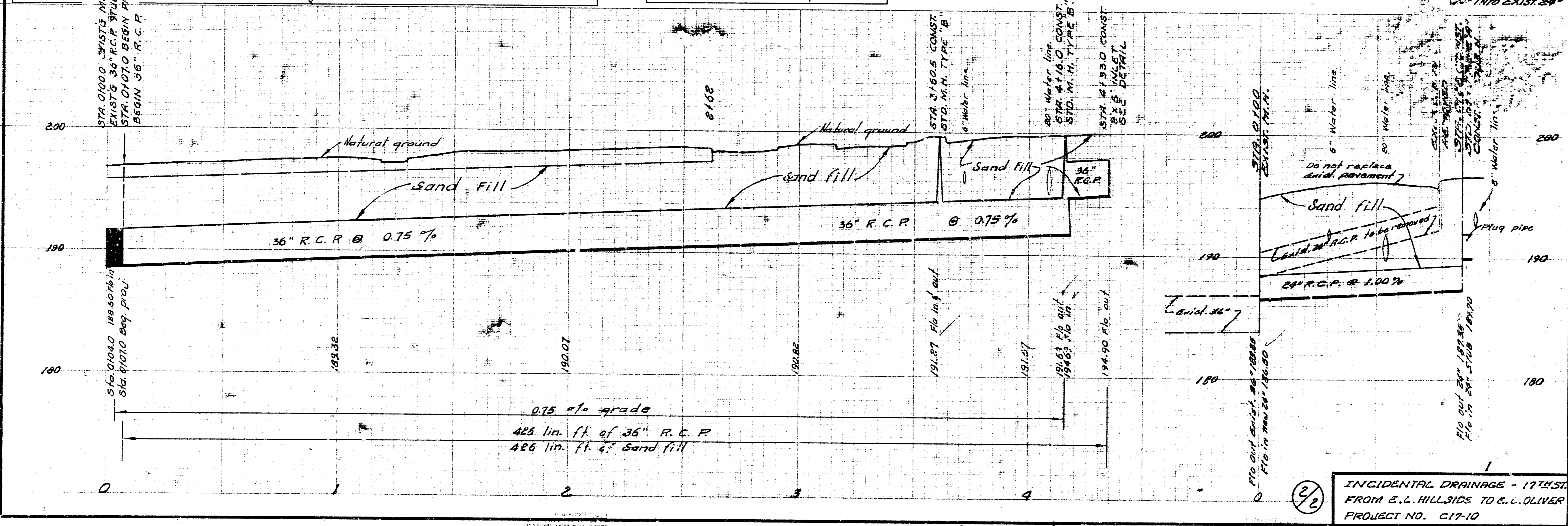
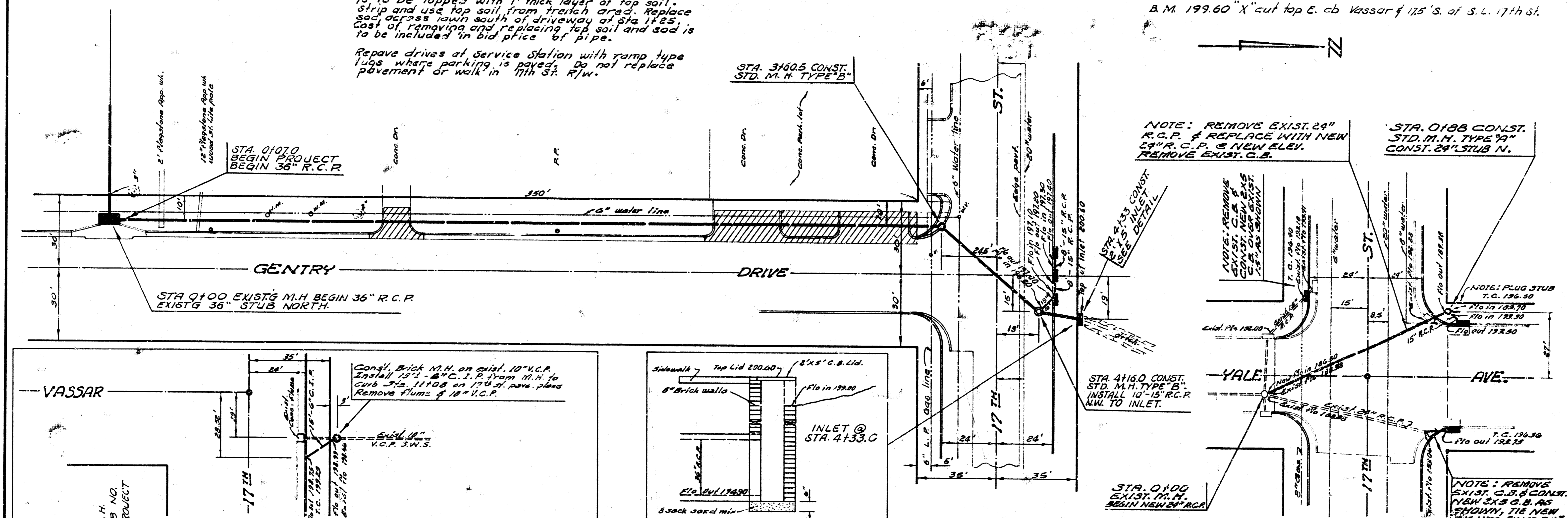
Note: All excavation for retaining walls
shall be included in the bid price per
Lin. Ft. of retaining wall.



B. M. 200.98 R. R. Spike N. side P. Pole on South side 17th St. and 40' W of W.L. Gentry.

NOTE:
 Sand Backfill between Sta. 01000 and Sta. 21600 is to be topped with 1" thick layer of top soil. Strip and use top soil from trash area. Replace sod across lawn south of driveway of Sta. 1125. Cost of removing and replacing top soil and sod is to be included in bid price of pipe.
 Repave drives of Service Station with ramp type logs where parking is paved. Do not replace pavement or walk in 17th St. R/W.

B. M. 199.60 "X" cut top E. cb Vassar 175' S. of S.L. 17th St.



INCIDENTAL DRAINAGE - 17TH ST. FROM E.L. HILLSIDE TO E.L. OLIVER PROJECT NO. C17-10