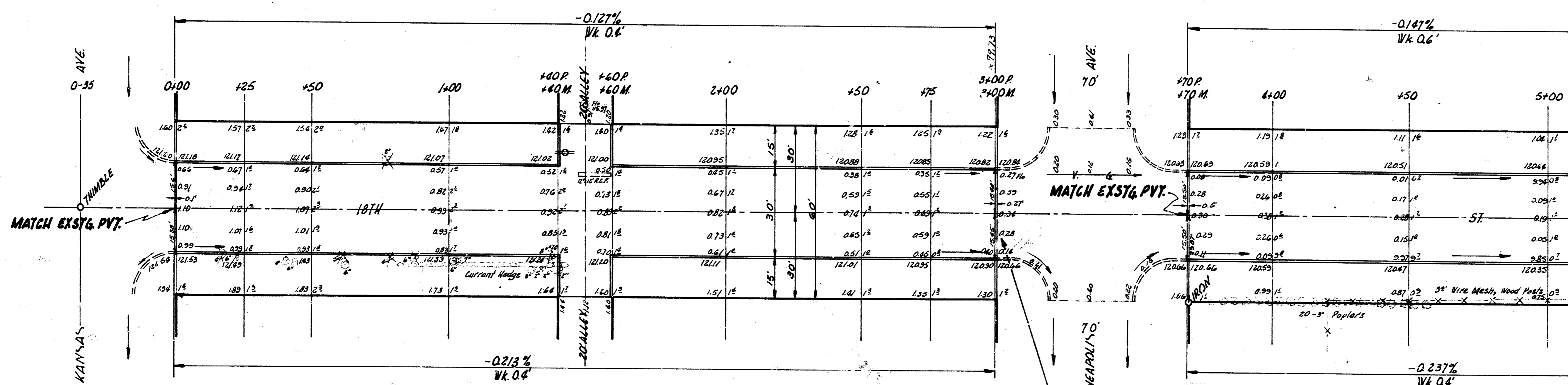


B.M. 12517 N.E. cor. back porch, house N.E. cor. 18th St. & Hydraulic  
 B.M. 12222 N.W. cor. conc. porch house #1832

Baseline & Stationing on E of 18th St. as follows:  
 1. From Thimble at Kansas to Thimble at Minnesota  
 2. From Thimble at Minnesota to point 300'S. of Iron on N.W. Platt & N.L. 18th  
 3. Remainder of project run one block at a time using corner Irons.



NOTE:  
 Remove necessary pvt. to insure  
 drainage. Replace to elevs. shown.

NOTE TO FIELD ENGINEER & CONTRACTOR  
 All entrance pipes are to be disposed of  
 in accordance with City dirt chackers  
 instructions.

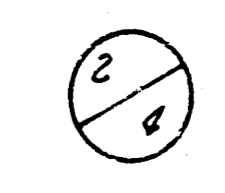
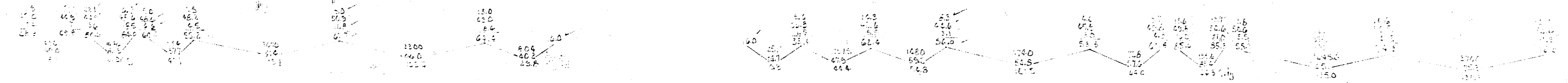
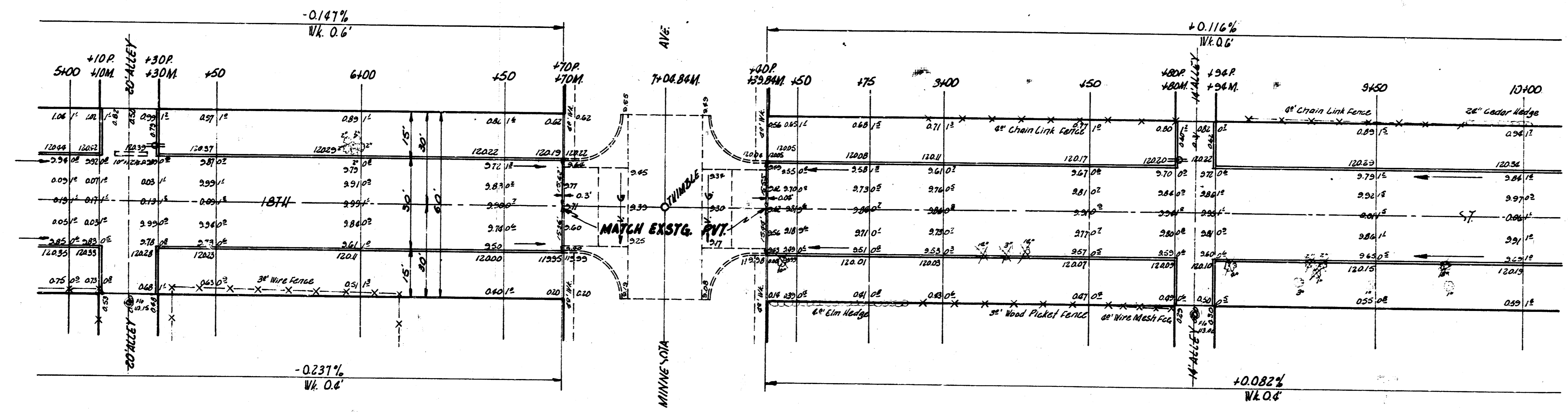
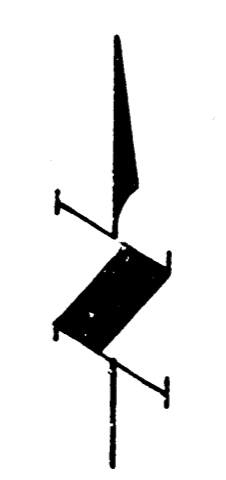


18TH ST  
 E.L. KANSAS - W.L. SPRUCE  
 30' CONC. & C.B.  
 CITY OF VICHITA, KANS.  
 B.E. SMITH CITY ENGINEER  
 APRIL 1954 PROJ. C16-23

TOTAL	55.00
PLANS	27.00
FIELD	15.00
CONTRACT	13.00
DATE	APR 1954

DATE: 11/14/11  
PROJECT: 18TH ST  
SHEET: 116 OF 117

DATE: 11/14/11  
PROJECT: 18TH ST  
SHEET: 116 OF 117

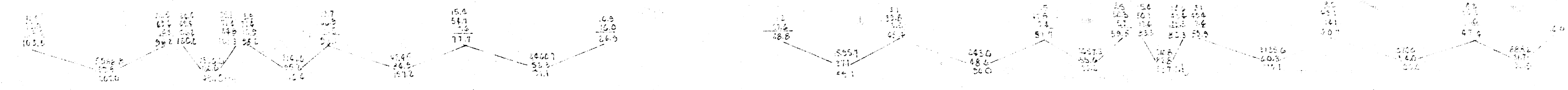
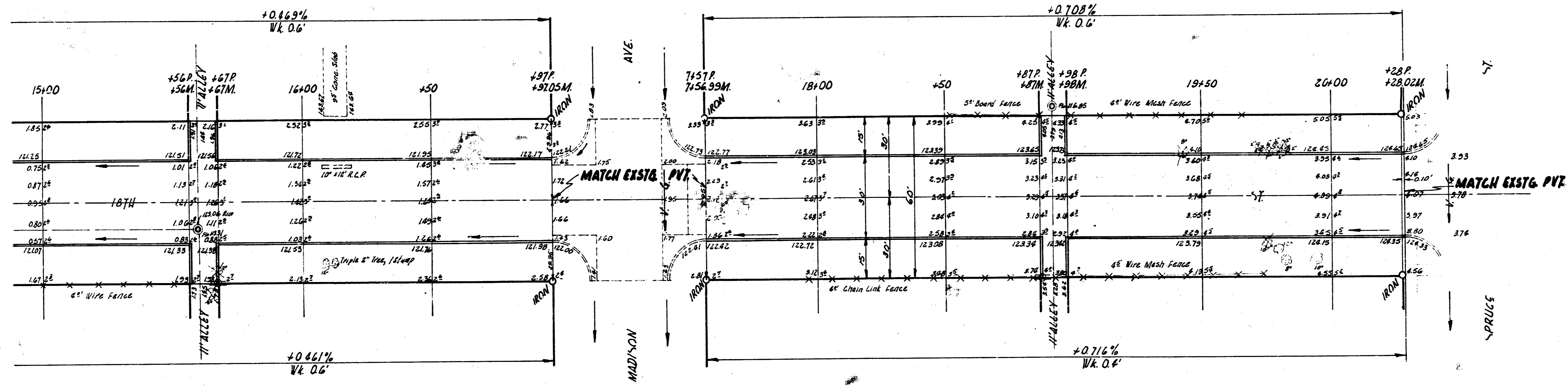
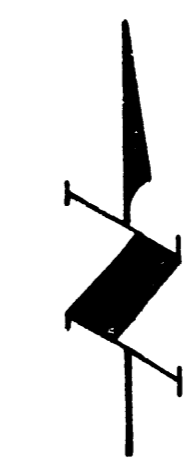


18TH ST  
PROJ. C16-23



City of Madison  
Public Works Dept.  
City of Madison

City of Madison  
Public Works Dept.  
City of Madison



18TH ST  
PROJ. C16-23