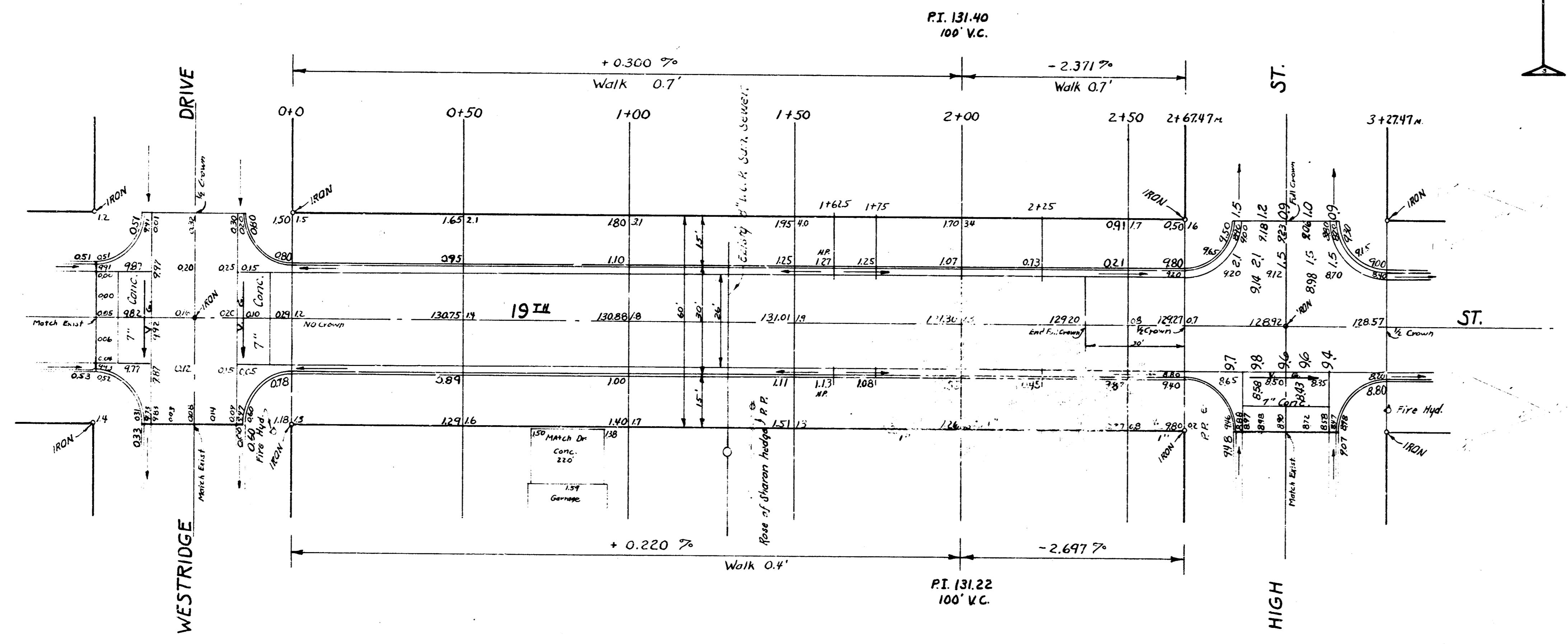
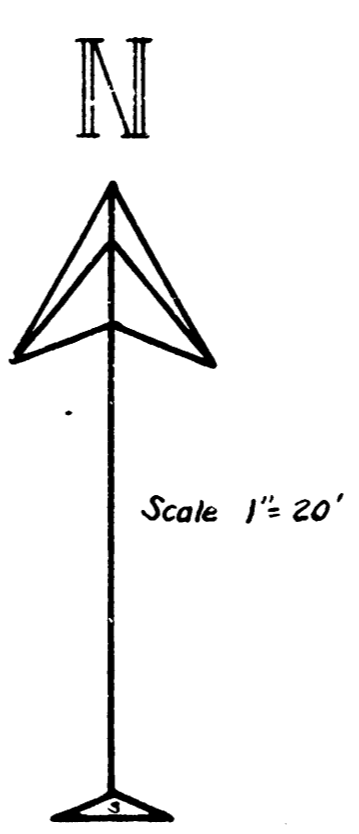


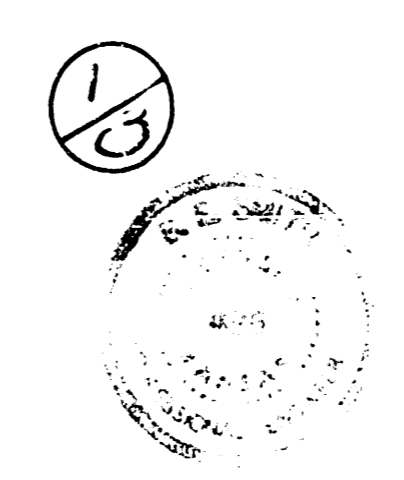
B.M. 13324 "M" in Muller S. Cor. 19th & Westridge
 B.M. 13391 SW. Cor. Conc. porch Ho # 1930 High
 B.M. 13056 SE Cor. Conc. porch Ho # 1951 Joann



Excavation

	City	Prop.
10%	333.3	1428.3
	33.3	1-2.0
	366.6 Cu. yd.	1,571.1 Cu. yd.

NOTE:
 Field Engineer to take ties
 and replace irons in intersections.



19th STREET
 WL WESTRIDGE DR. to WL JOANN ST
 25-2-30 A.C.
 CITY OF WICHITA KANSAS
 B.E. SMITH CITY ENGINEER
 DATE MAY 1961 PROJ. NO. C15-151

