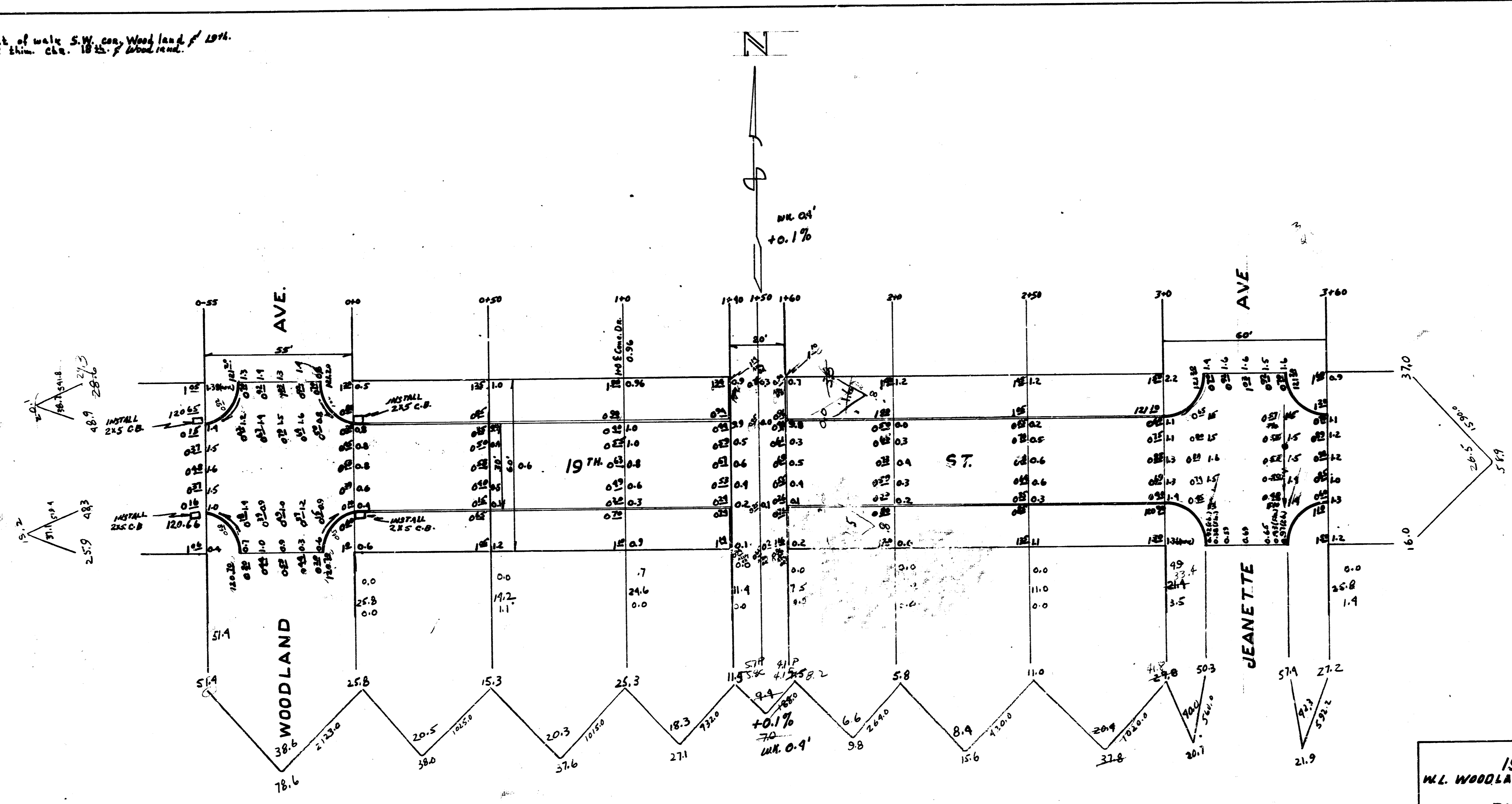



Final Plans  
 Plan Section (Book 10)

B.M. 121.46 - "X" front of walk S.W. cor. Woodland & 19th.  
 B.M. 119.82 - Top of elm. cor. 18th & Woodland.

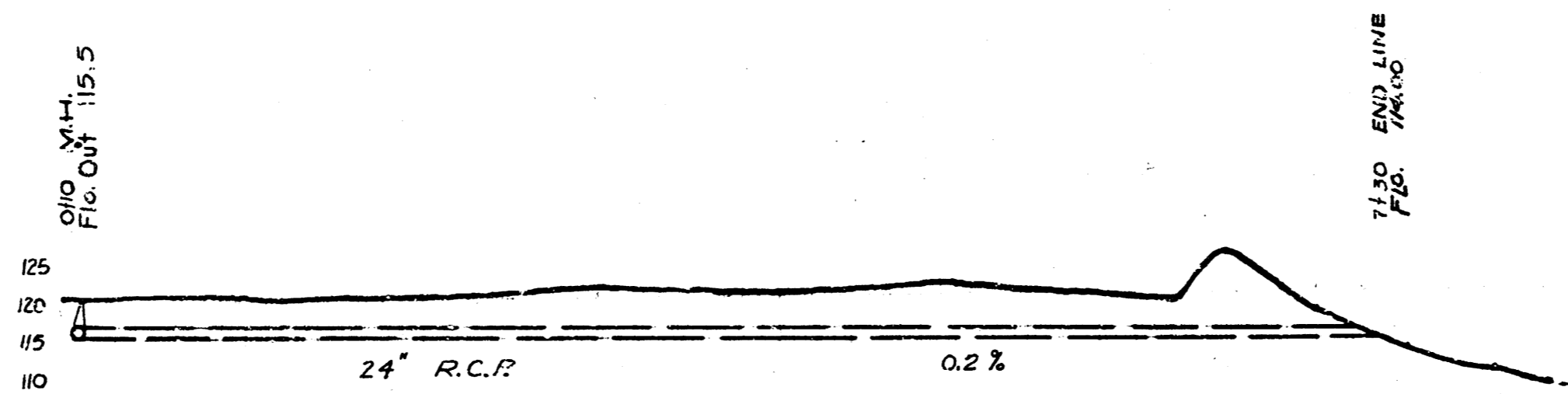
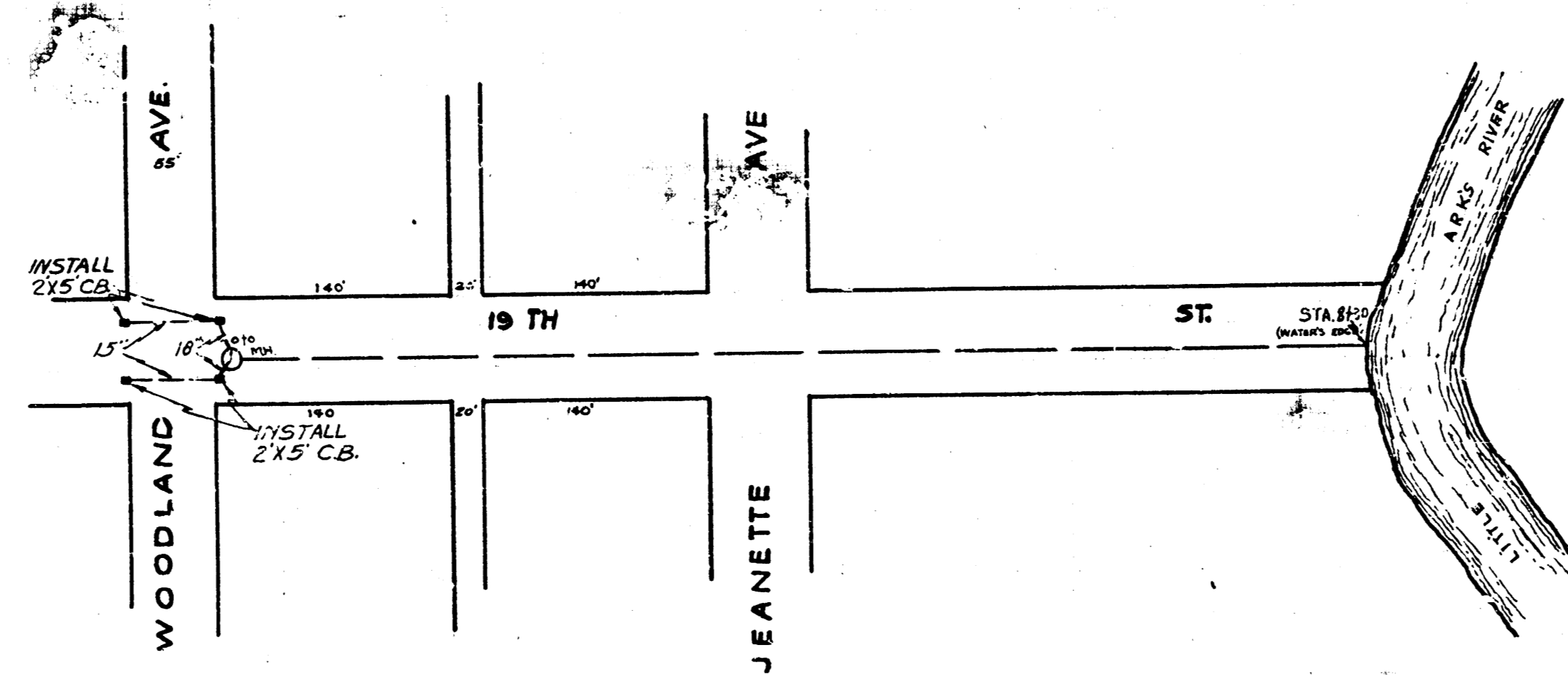
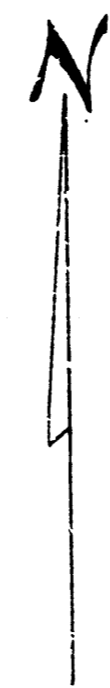
Prop.	City
38.0	7.0
37.6	78.6
27.1	20.7
9.8	21.3
15.6	58.9
37.8	19.2
16.6 + 10%	20.1
182.5	25.8
	25.8



  
 19<sup>TH</sup> ST.  
 W.L. WOODLAND W.L. JEANETTE  
 30" CONC. S/CB  
 CITY OF WICHITA, KANSAS  
 L.K. WHITE CITY ENGINEER  
 JULY, 1947

15 5

BM. 12176 "X" on front of WC. St. Corner 11th & Woodland  
 BM. 12071 "O" on Globe End of ch. 43. Jeanette S.E. 1/4  
 BM. 12151 Top of old step on old Tele. Pole. 15' N. of line of St. 610



**INCIDENTAL DRAINAGE**  
 IN CONNECTION WITH PAVEMENT  
 13th ST - WOODLAND TO JEANETTE