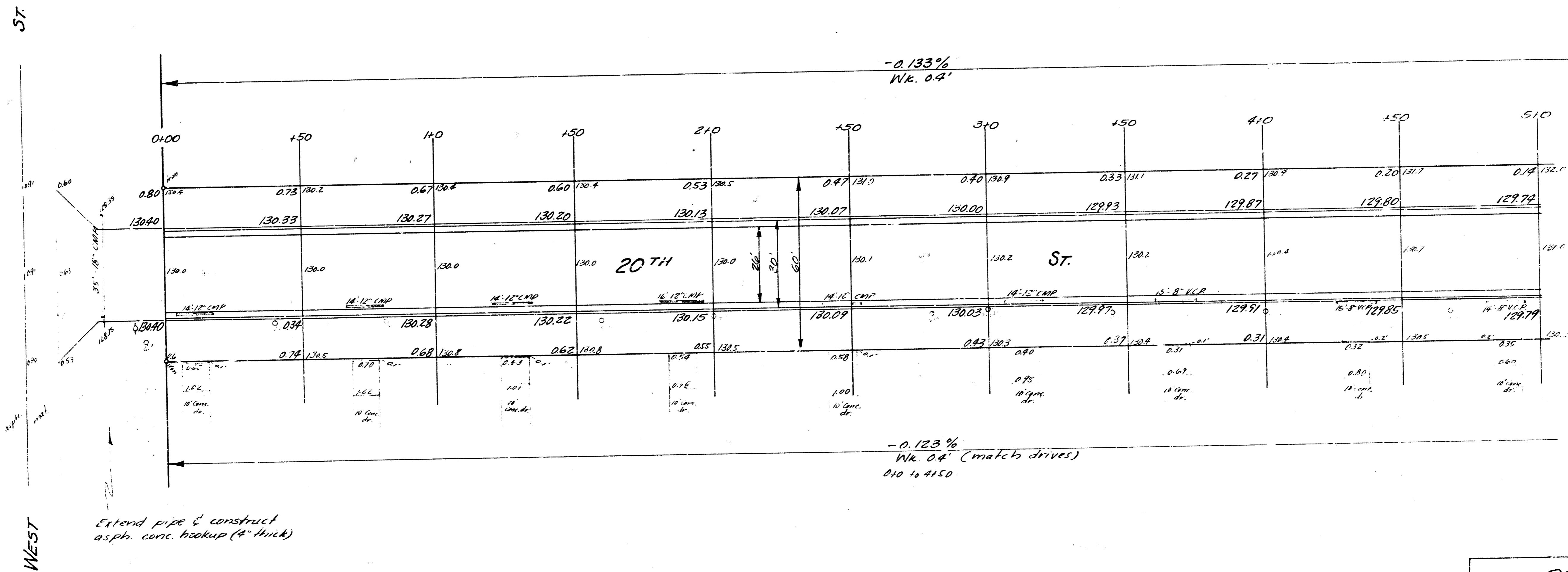
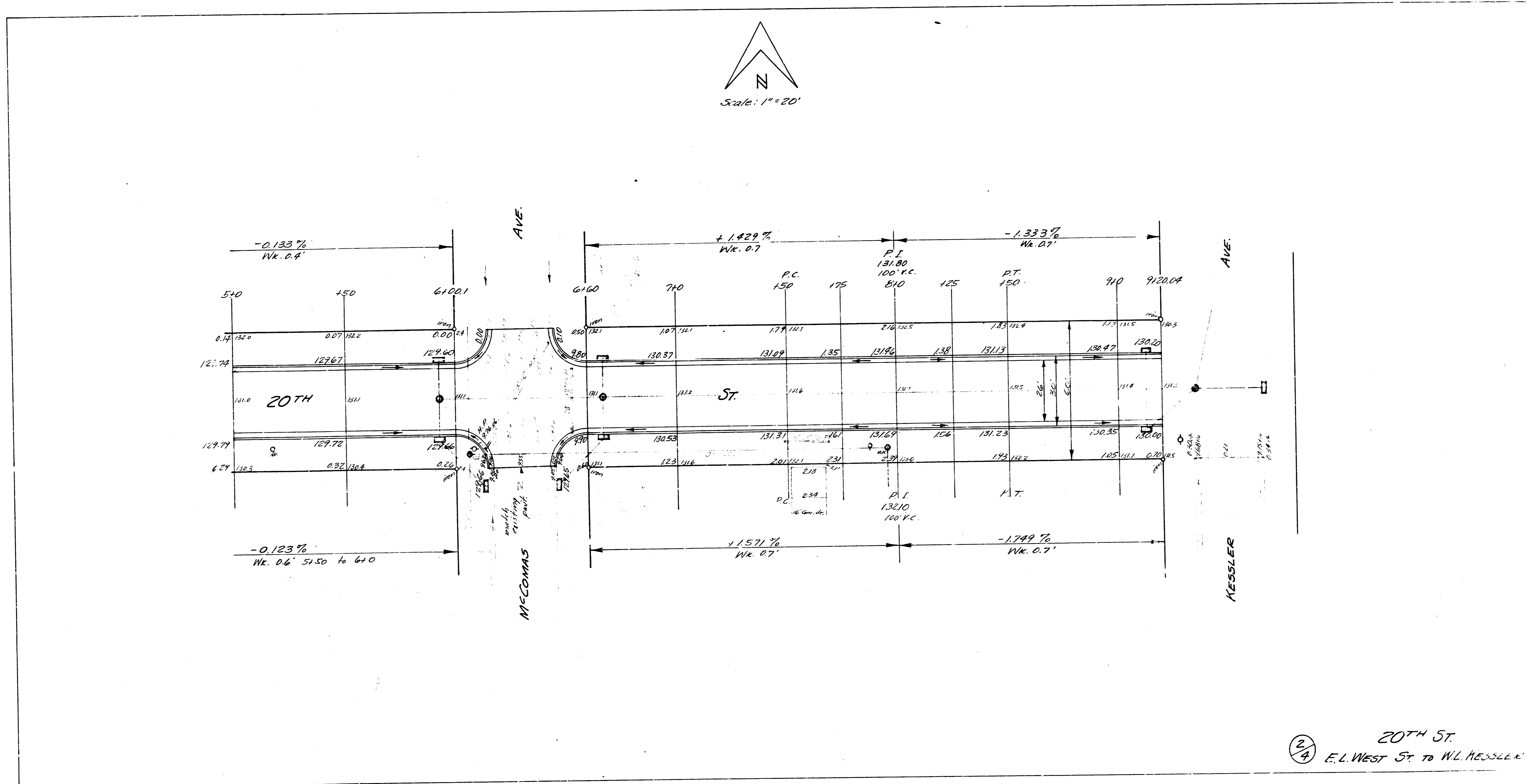


B.M. 131.00 Step Bench E.S. P. Pole S.E. Cor. 20th & West St.



20TH ST.
 E.L. WEST ST. TO W.L. HESSLER
 26'-2'-30" A.C.
 CITY OF WICHITA, KANSAS
 B.E. SMITH - CITY ENGINEER
 JULY, 1962 PROJ. C15-167

1/4



20TH ST.
E.L. WEST ST. TO W.L. KESSLER