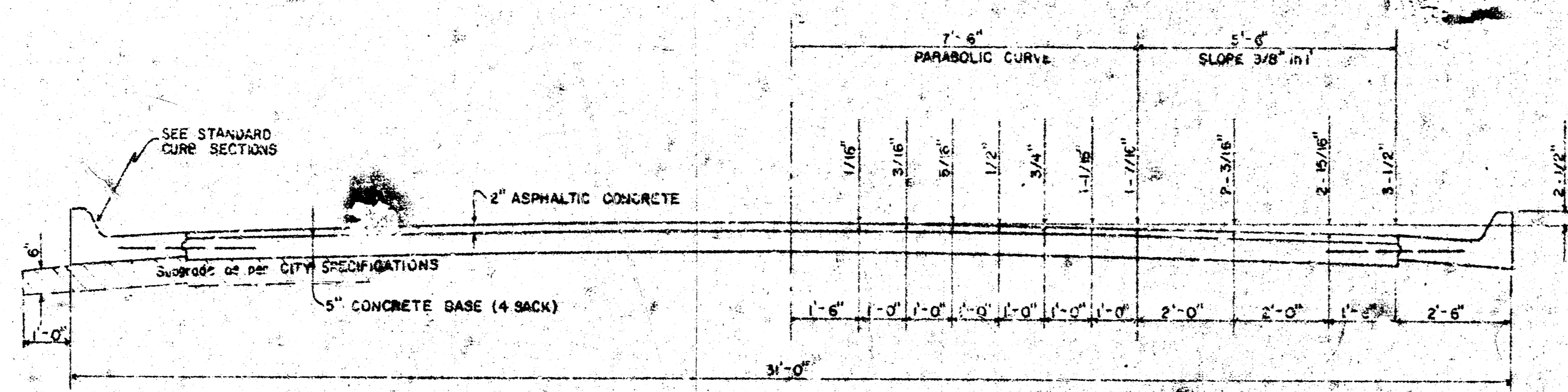
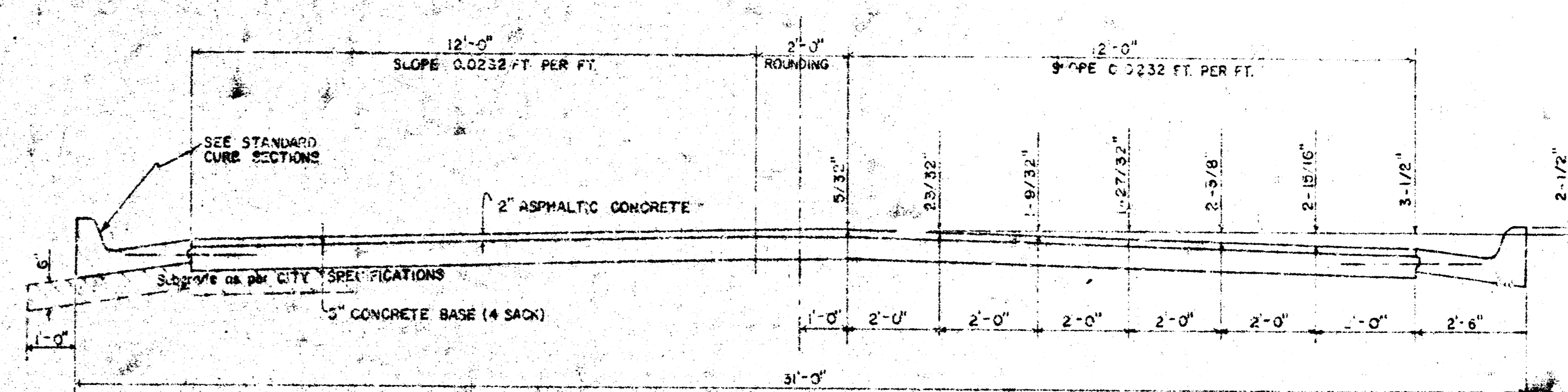


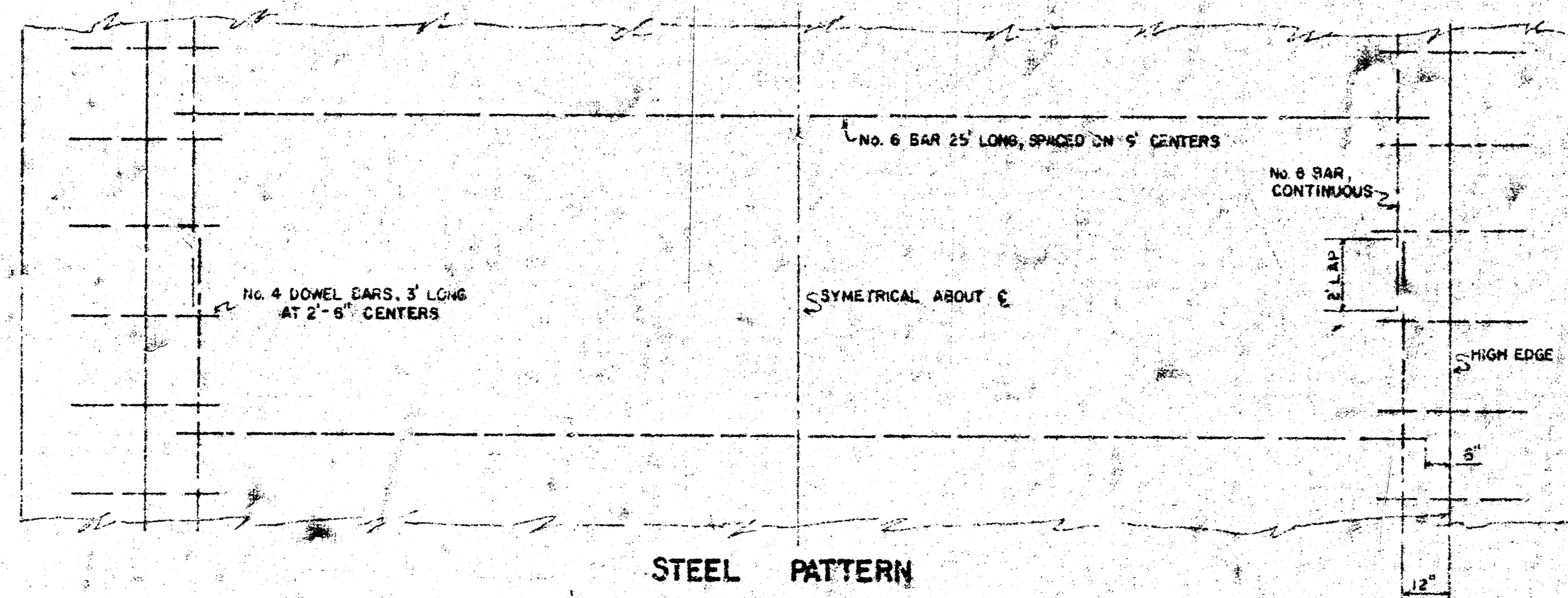
**TWENTIETH STREET
EL EDGE MOOR TO WL BEAUMONT
TYPICAL SECTION 30' ASPHALTIC CONCRETE PAVEMENT**



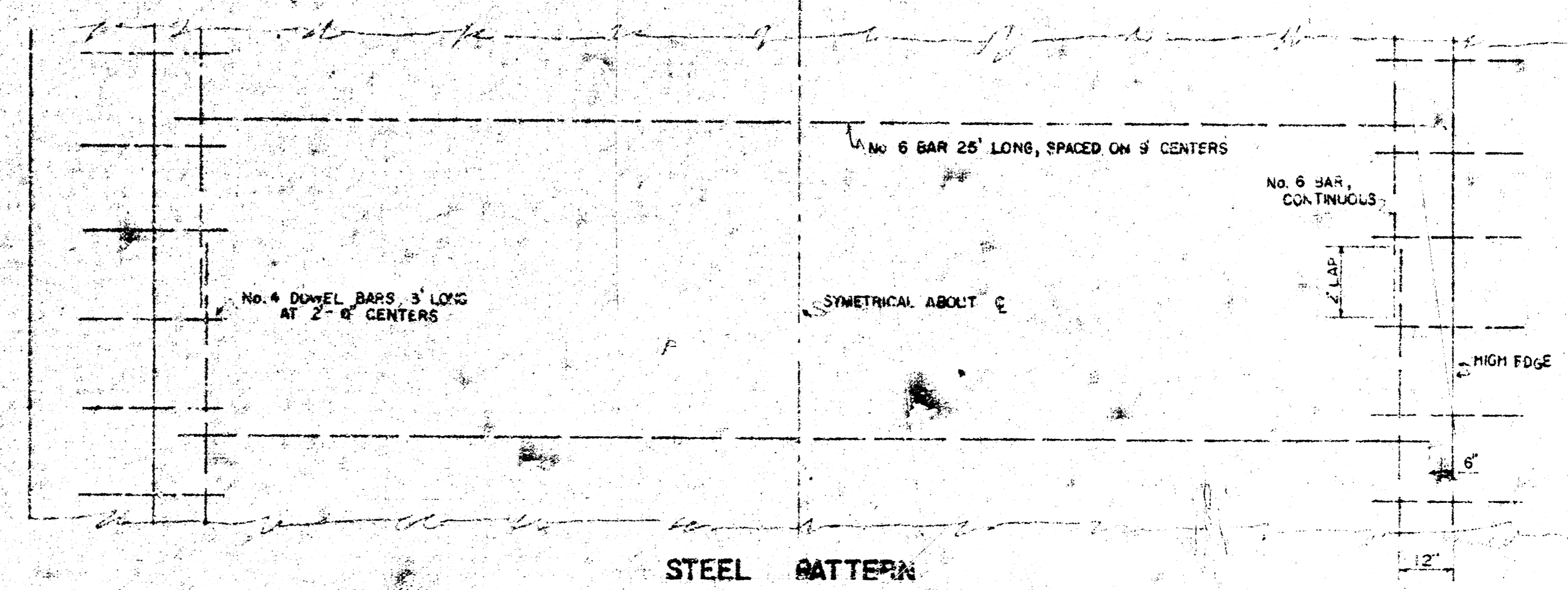
TYPICAL SECTION WITH STANDARD CROWN



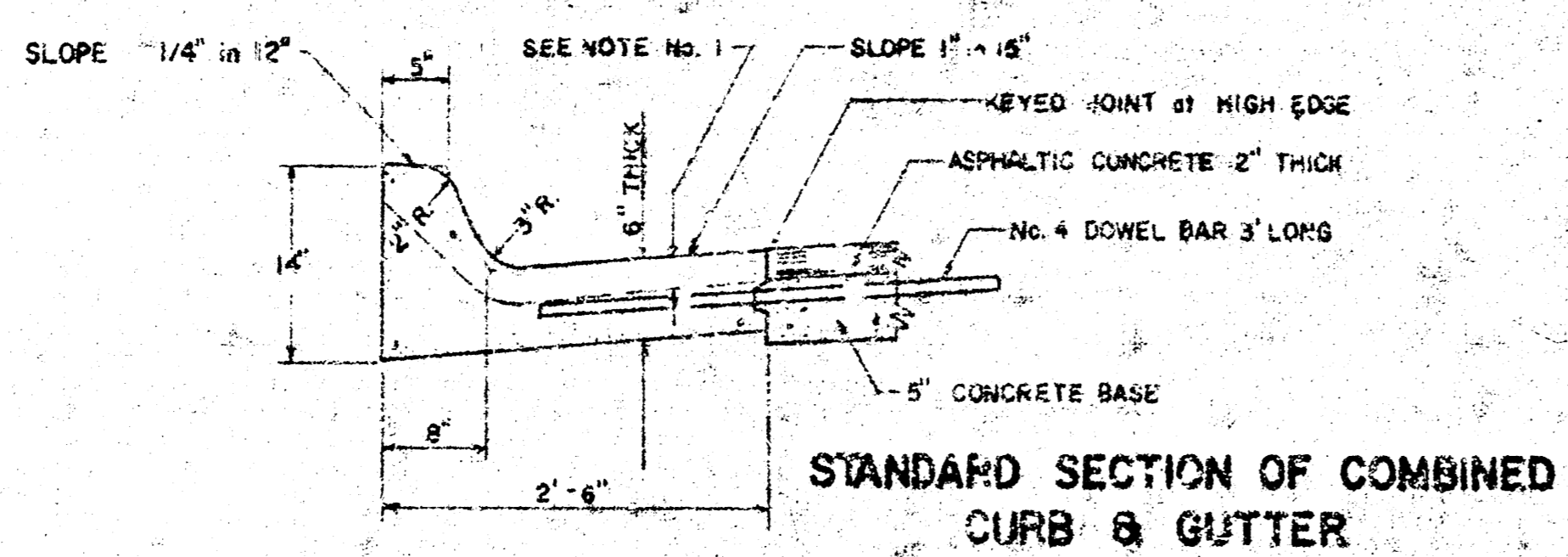
TYPICAL SECTION WITH ALTERNATE CROWN



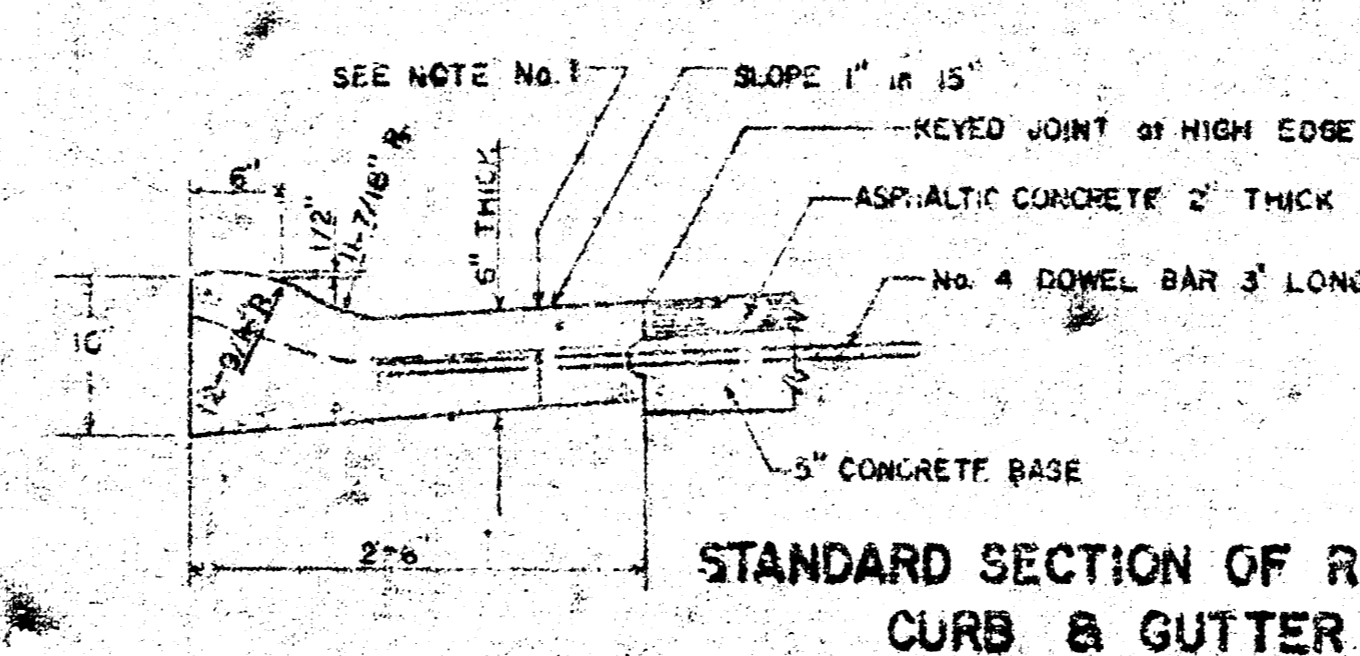
STEEL PATTERN



STEEL PATTERN



STANDARD SECTION OF COMBINED CURB & GUTTER



STANDARD SECTION OF ROLL-TYPE CURB & GUTTER

GENERAL NOTES

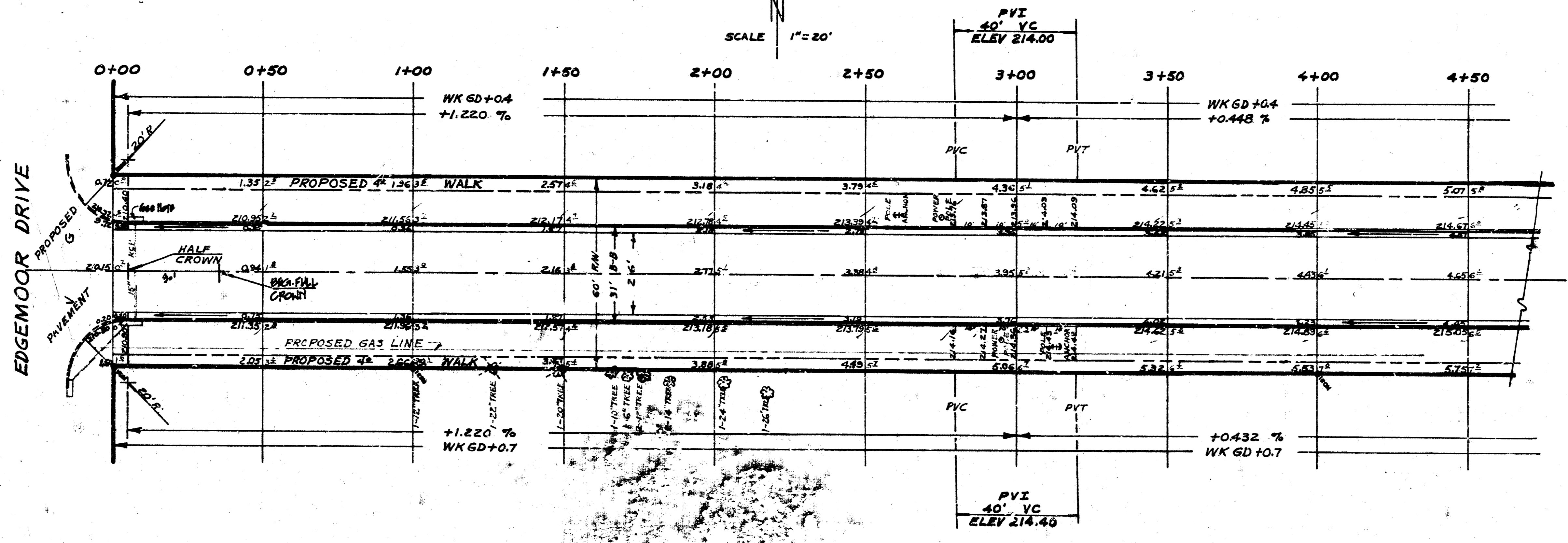
1. CONTRACTION JOINTS MAY BE CONSTRUCTED IN COMBINED CURB AND GUTTER BY SAWING WITH AN APPROVED CONCRETE SAW. THE SAW CUT SHALL EXTEND 2-1/2" BELOW THE SURFACE OF THE GUTTER AND CURB. SAWED CONTRACTION JOINTS SHALL HAVE A MAXIMUM SPACING OF 10' AND BE FILLED WITH A SPECIFIED JOINT FILLER, SUCH THAT THE JOINT IN THE GUTTER SECTION WILL BE COMPLETELY FILLED.



CITY OF WICHITA, KANSAS
Department of Public Works - Engineering Division
R.W. Linn, City Engineer
Date: _____
Project No. DWK574-029

1/6

BASELINE & STATIONING ON E
 BM#1 212.18 CITY STD @ RIDGEWAY & 21ST 32'E & 44'S OF E. OF BOTH
 BM#2 217.21 NW COR CONC PORCH W SIDE BRICK HOUSE 1936 N EDGEMOOR
 BM#3 218.43 S SOUTH END OF RAD SW COR BEAUMONT & 20TH



Drawn: R.L.S. & A.R.S.
 Plan: HUGHES
 Ex: HUGHES
 Checked:

NOTE: INLETS TO BE ADJUSTED BY OTHERS

SUBGRADE
 TYPE OF SUB-GRADE TREATMENT SHALL BE DETERMINED BY THE FIELD ENGINEER. SUB-GRADE TREATMENT MAY CONSIST OF LIME TREATMENT, CEMENT TREATMENT, SUB-GRADE MODIFICATION, OR ANY COMBINATION OF THESE.

NOTE TO FIELD ENGINEER & CONTRACTOR
 Grade, 20% and lower right-of-way for proposed sidewalk. Compact fill in sidewalk area to be constructed by "OTHERS".

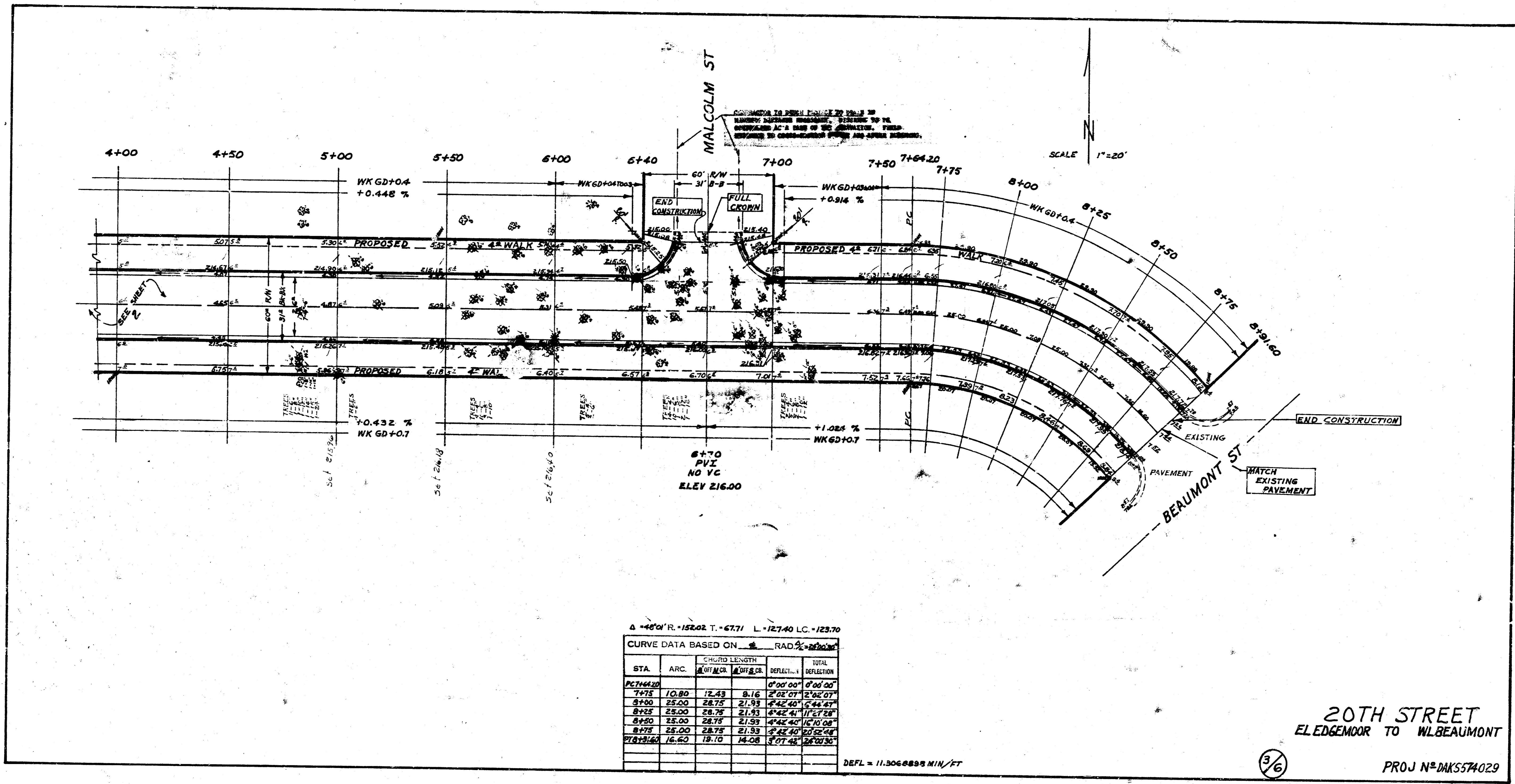
- = TREE REMOVAL
- = REMOVAL TO BE DETERMINED BY FIELD ENGINEER

| EARTH WORK | | |
|-----------------------------|-----------------------|----------------------|
| EXCAVATION | PROPERTY | CITY |
| 10% | 2754.40 CU.YD. | 93.80 CU.YD. |
| | 275.44 CU.YD. | 9.38 CU.YD. |
| TOTAL EXCAVATION | 3029.84 CU.YD. | 103.18 CU.YD. |
| COMPACTED FILL | 20.44 CU.YD. | |
| 10% | 2.04 CU.YD. | |
| TOTAL COMPACTED FILL | 22.48 CU.YD. | |



20TH STREET
ELEDGEMOOR TO WILBEAUMONT
 26' - 2' - 30'
 ASPHALTIC CONC PAVT/CONC CURB & GUTTER
 CITY OF WICHITA KANSAS
 RW LINN CITY ENGINEER
 DATE PROJ N# DKS574029

2/6



Δ = 46.0' R = 152.02 T = 67.71 L = 127.40 LC = 123.70

CURVE DATA BASED ON $\frac{1}{8}$ RAD. $\frac{1}{2}$ IN/100'

| STA | ARC | CHORD LENGTH | | DEFLECT. | TOTAL DEFLECTION |
|------------|-------|--------------|----------|----------|------------------|
| | | CHORD | DEFLECT. | | |
| PC 7+64.20 | | | | 0°00'00" | 0°00'00" |
| 7+75 | 10.80 | 12.43 | 8.16 | 2°02'07" | 2°02'07" |
| 8+00 | 25.00 | 28.75 | 21.93 | 4°42'40" | 4°42'40" |
| 8+25 | 25.00 | 28.75 | 21.93 | 4°42'40" | 8°42'40" |
| 8+50 | 25.00 | 28.75 | 21.93 | 4°42'40" | 12°42'40" |
| 8+75 | 25.00 | 28.75 | 21.93 | 4°42'40" | 16°42'40" |
| PT 8+91.20 | 16.60 | 18.10 | 14.08 | 3°07'43" | 20°00'00" |

DEFL = 11.3066898 MIN/FT

20TH STREET
EL EDGEMOOR TO WL BEAUMONT

3/6

PROJ N° DKS574029