

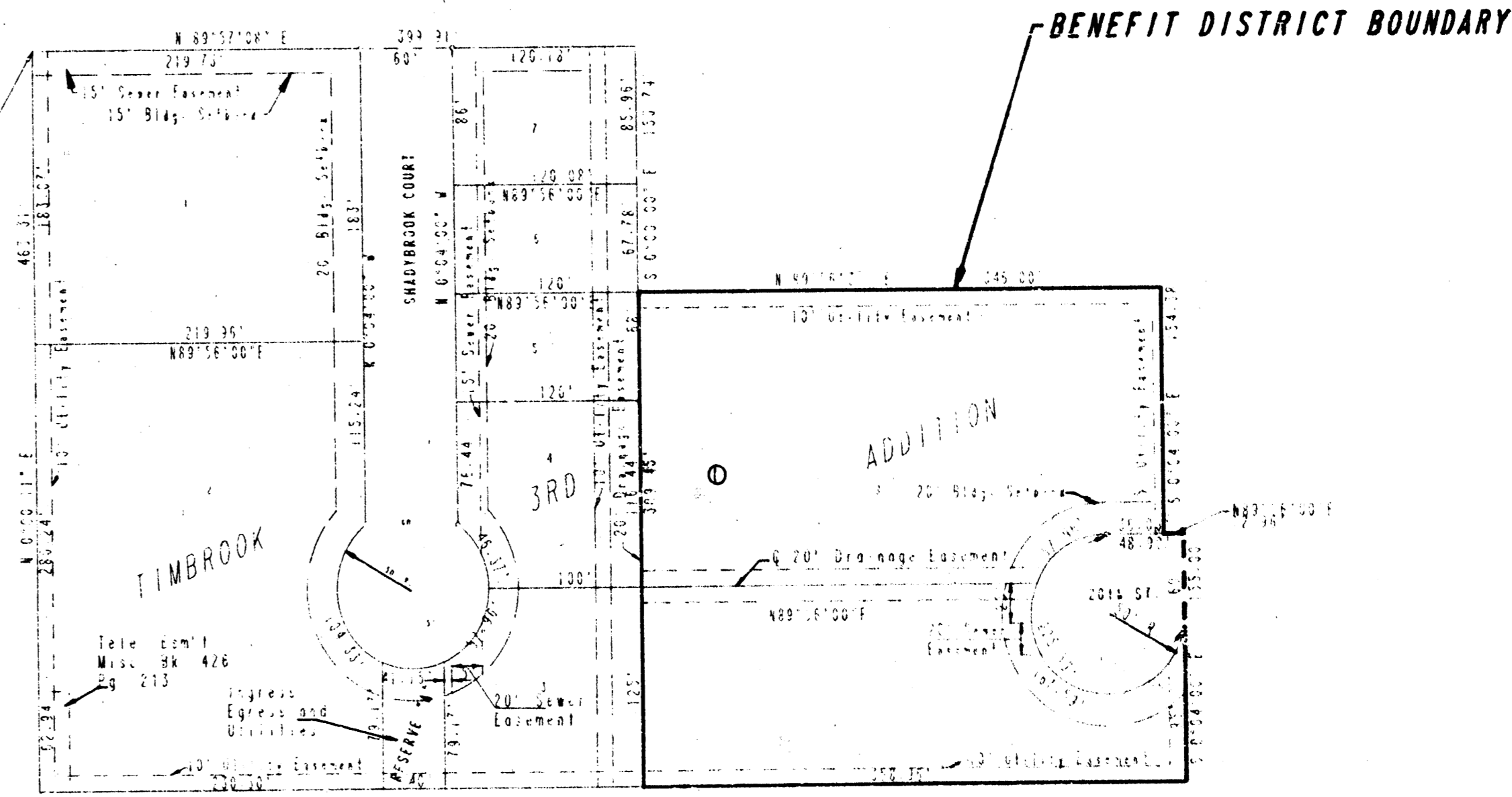
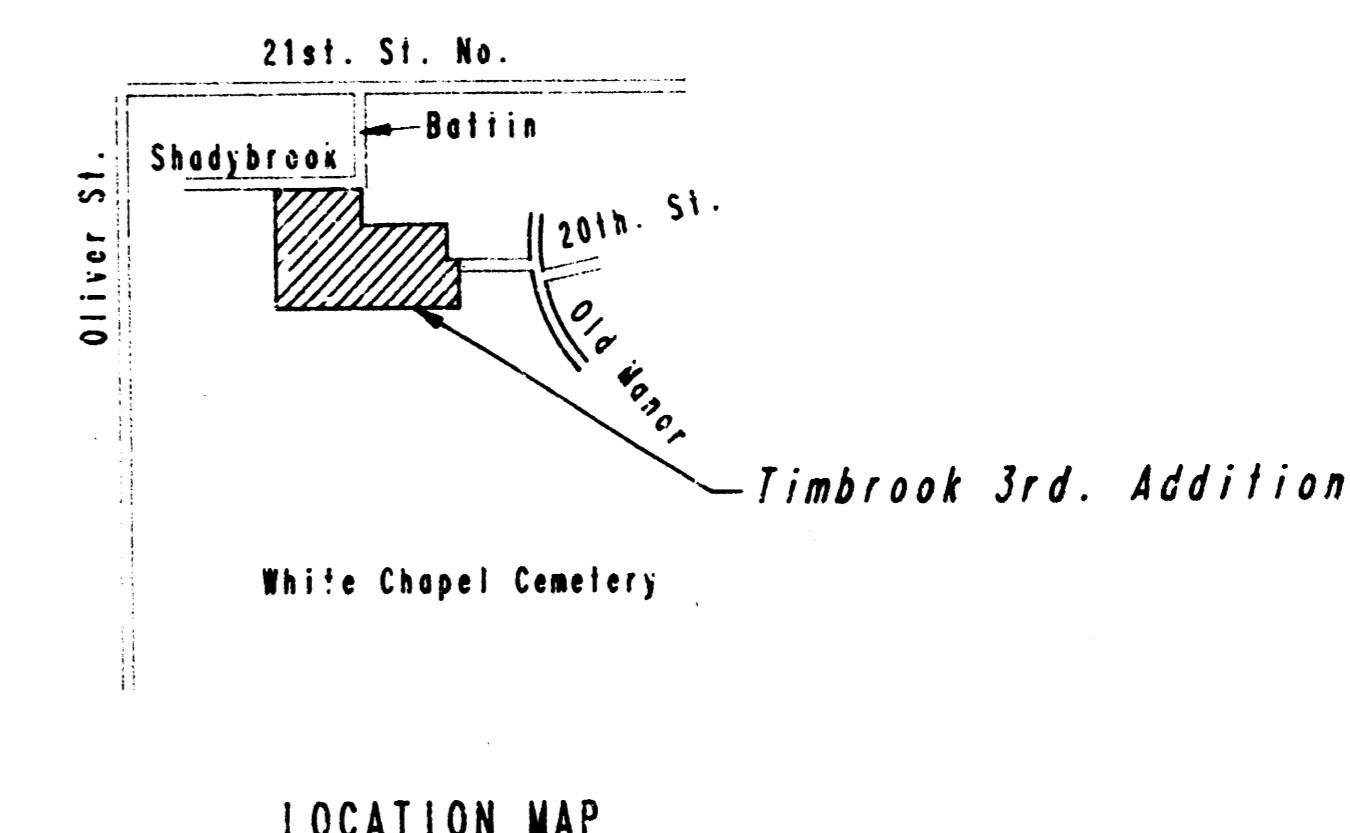
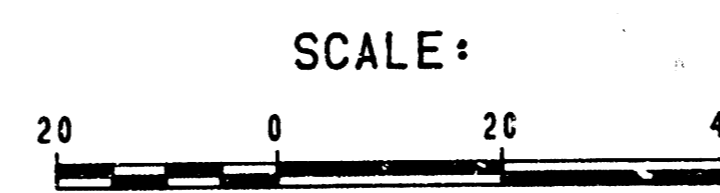
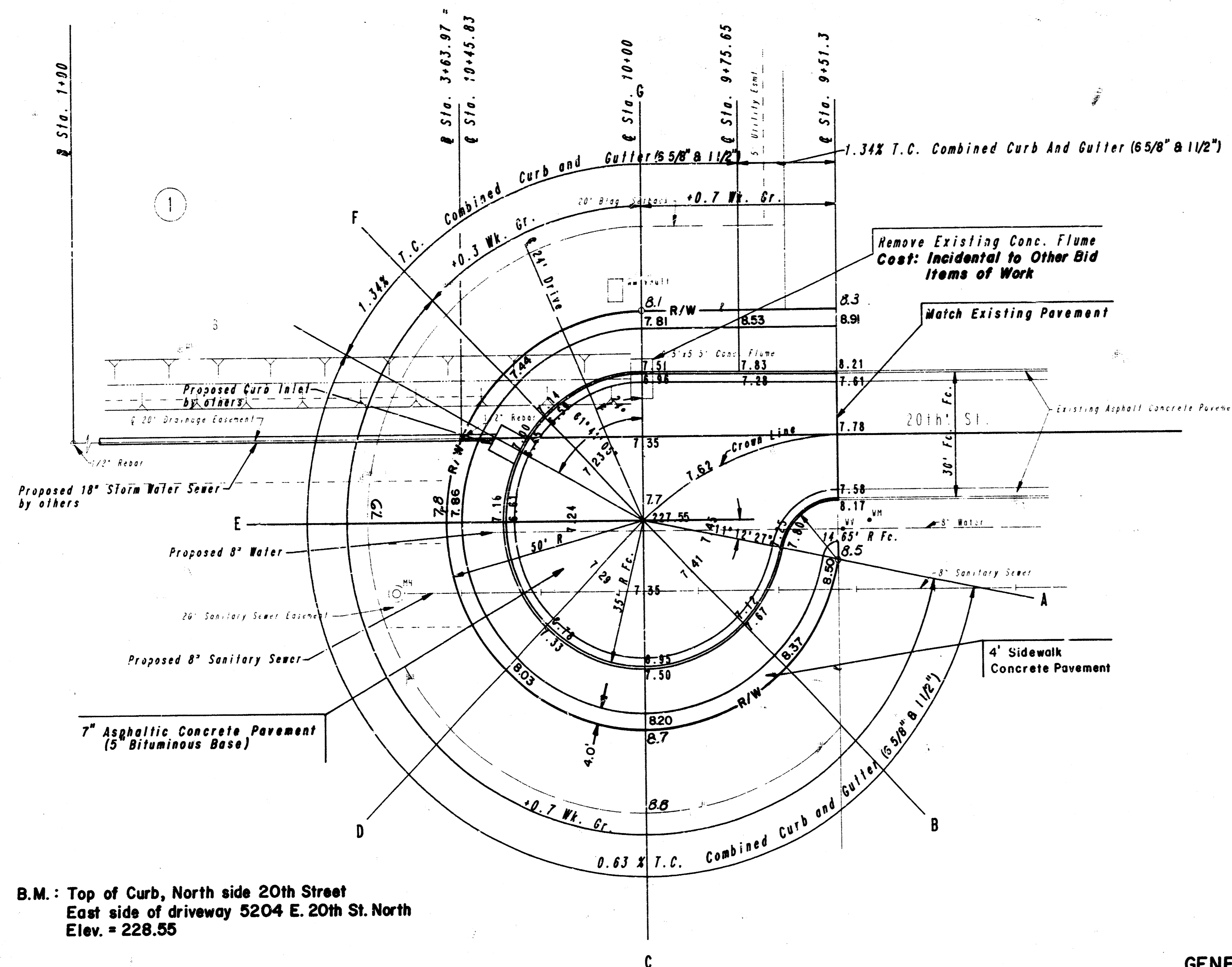
TIMBROOK 3RD. ADDITION

WICHITA, SEDGWICK COUNTY, KANSAS

20TH. STREET NORTH

(West Line Lot 1, Block B, Timbrook Addition
to and including Cul-De-Sac)

City of Wichita Proj. No. 472-76-245-81508-000-001



B.M.: Top of Curb, North side 20th Street
East side of driveway 5204 E. 20th St. North
Elev. = 228.55

GENERAL NOTES

UTILITY SERVICE LINES, POLES, VALVE BOXES, METERS, AND ETCETERA ARE TO BE ADJUSTED AS NECESSARY BY OTHERS PRIOR TO OR DURING CONSTRUCTION UNLESS THE PLANS SPECIFICALLY CALL FOR THEIR ADJUSTMENT BY THE CONTRACTOR. EXISTING UTILITIES AND THEIR LOCATION, AS SHOWN ON THE PLANS, REPRESENT THE BEST INFORMATION OBTAINABLE FOR DESIGN. LOCATION INFORMATION HAS BEEN OBTAINED FROM THE VARIOUS UTILITY COMPANIES AND IS EITHER FROM COMPANY RECORD DRAWINGS OR COMPANY PROVIDED FIELD LOCATIONS. THE PLAN LOCATIONS SHOWN ARE NOT GUARANTEED. ADDITIONAL EXISTING UTILITIES MAY ALSO BE ENCOUNTERED. THE CONTRACTOR WILL BE REQUIRED TO WORK AROUND EXISTING UTILITIES WITHIN THE RIGHT-OF-WAY WHICH DO NOT CONFLICT WITH PROPOSED CONSTRUCTION.

RUBBLE FROM THE REMOVAL OF MISCELLANEOUS STRUCTURES AND PAVEMENT REMOVAL WHICH IS TO BE WASTED SHALL BE DISPOSED OF ON SITES TO BE PROVIDED BY THE CONTRACTOR. THESE SITES SHALL BE APPROVED BY THE ENGINEER AS TO SUITABILITY, APPEARANCE, AND SITE LOCATION. LOCATIONS THAT, IN THE OPINION OF THE ENGINEER, WILL LEAVE AN UNSIGHTLY APPEARANCE WILL NOT BE APPROVED.

NO MORE THAN 1 DRIVE, 24 FEET IN WIDTH, OR EQUIVALENT COMBINATIONS THEREOF, ARE TO BE CONSTRUCTED WITH THIS PROJECT.

LIMITS OF EARTHWORK SHALL MATCH EXISTING GROUND ELEVATIONS AT THE RIGHT-OF-WAY LINE UNLESS OTHERWISE NOTED ON THE PLANS WITH A NEW FINISHED GRADE ELEVATION. WHEN A NEW FINISHED GRADE ELEVATION IS SHOWN, THE EARTHWORK SHALL EXTEND ONE FOOT BEYOND THE RIGHT-OF-WAY LINE AND THEN SLOPED UP OR DOWN USING PERMISSIBLE SLOPES TO MATCH THE EXISTING GROUND SURFACE.

THE CONTRACTOR WILL BE PERMITTED TO BID ONLY ONE OF THE ALTERNATIVE TYPES OF SUBGRADE TREATMENT. THE TYPE BID BY THE SUCCESSFUL BIDDER WILL BE THE TYPE OF SUBGRADE TREATMENT USED TO CONSTRUCT THE PROJECT.

THE CONTRACTOR SHALL BE RESPONSIBLE FOR PRESERVING PROPERTY IRONS. THE CONTRACTOR WILL BE REQUIRED TO RE-ESTABLISH ANY PROPERTY IRONS WHICH ARE DAMAGED OR DESTROYED BY HIS CONSTRUCTION OPERATIONS. SUCH IRONS SHALL BE RE-ESTABLISHED BY A LICENSED LAND SURVEYOR OR A LICENSED PROFESSIONAL ENGINEER IN ACCORDANCE WITH STATE LAWS.

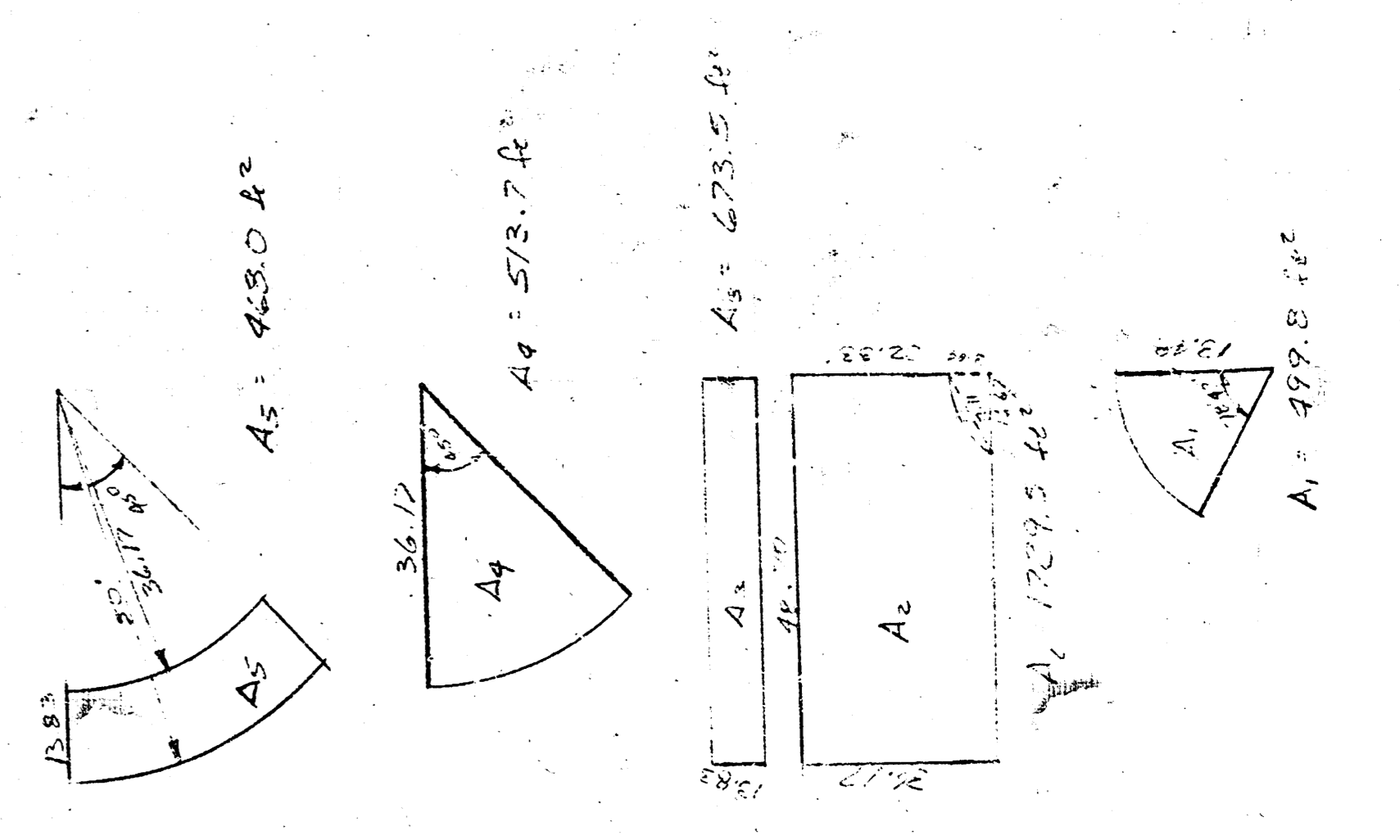
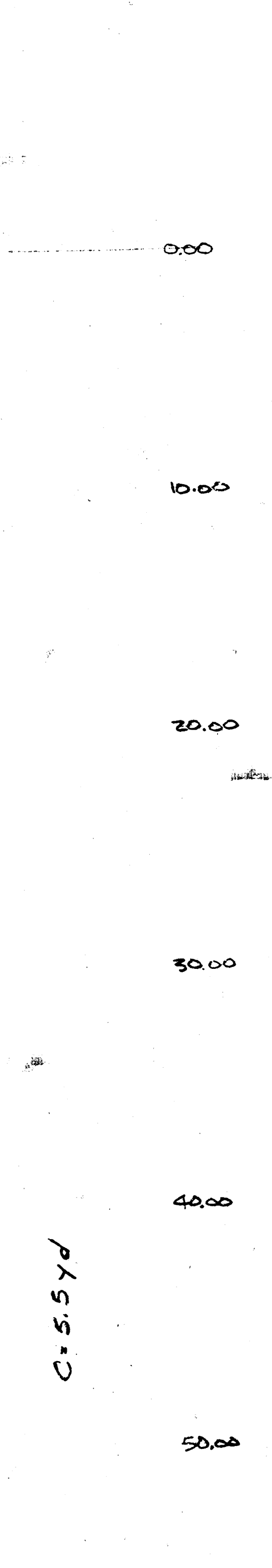
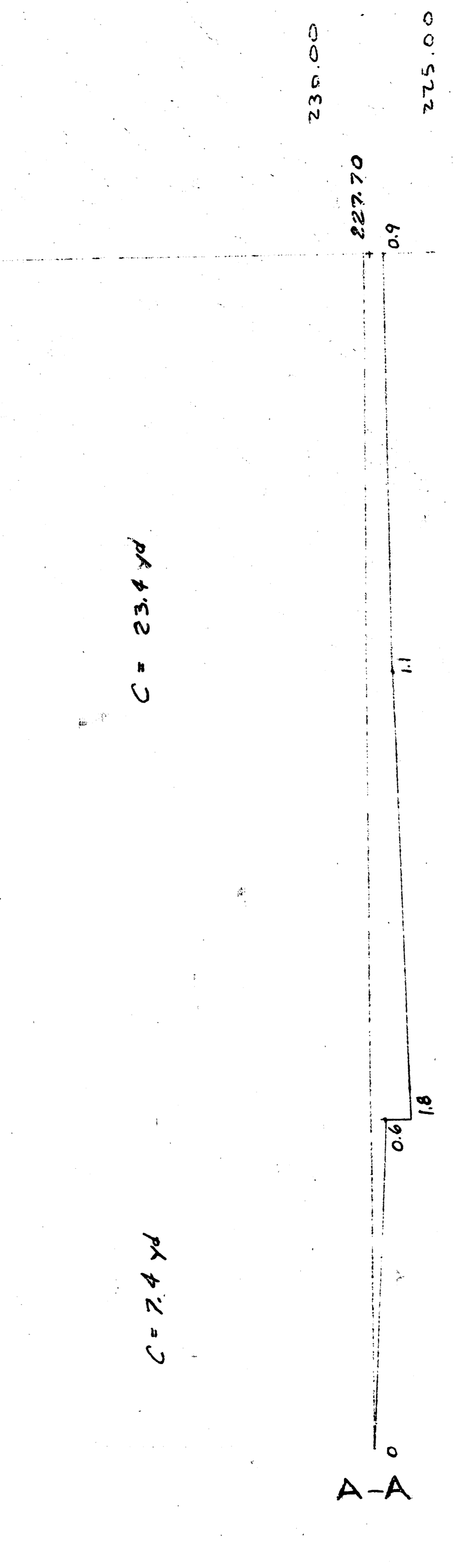
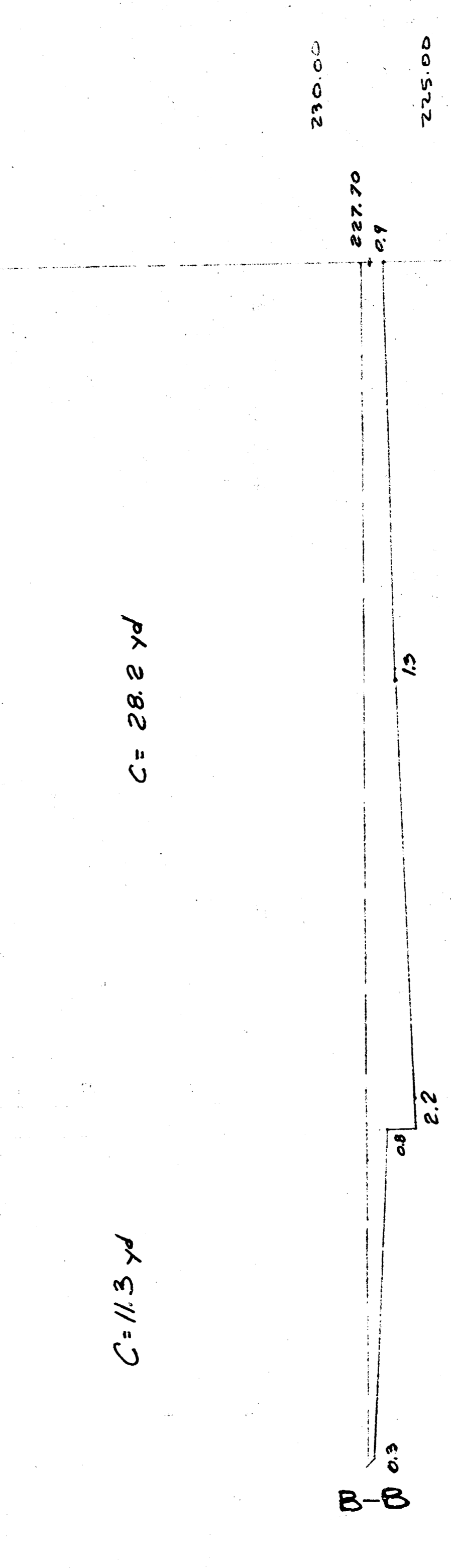
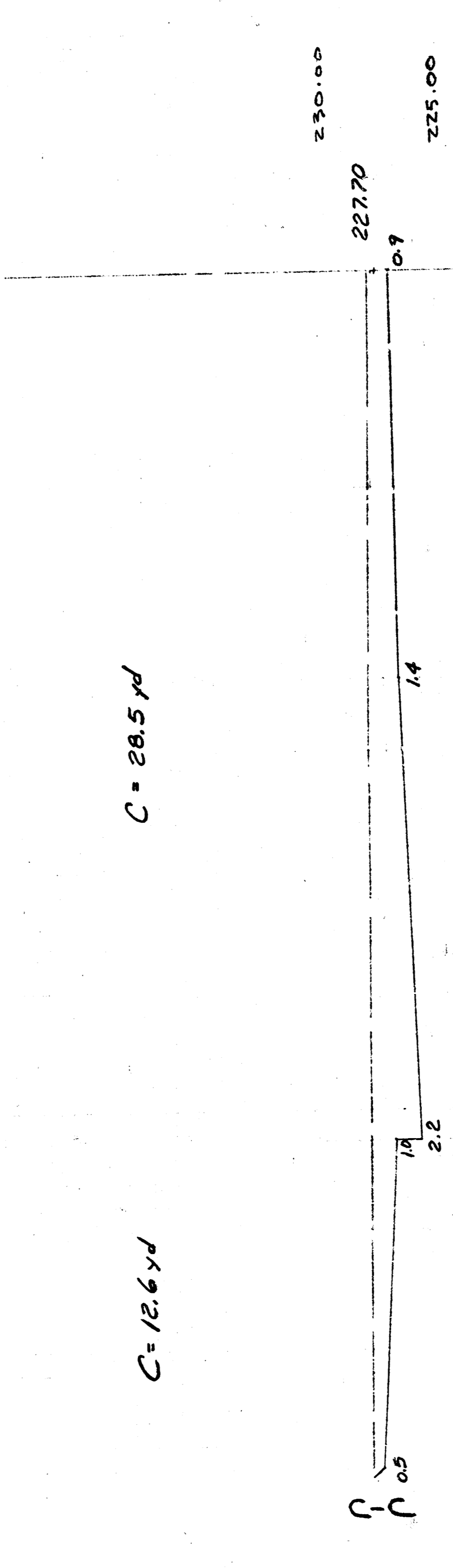
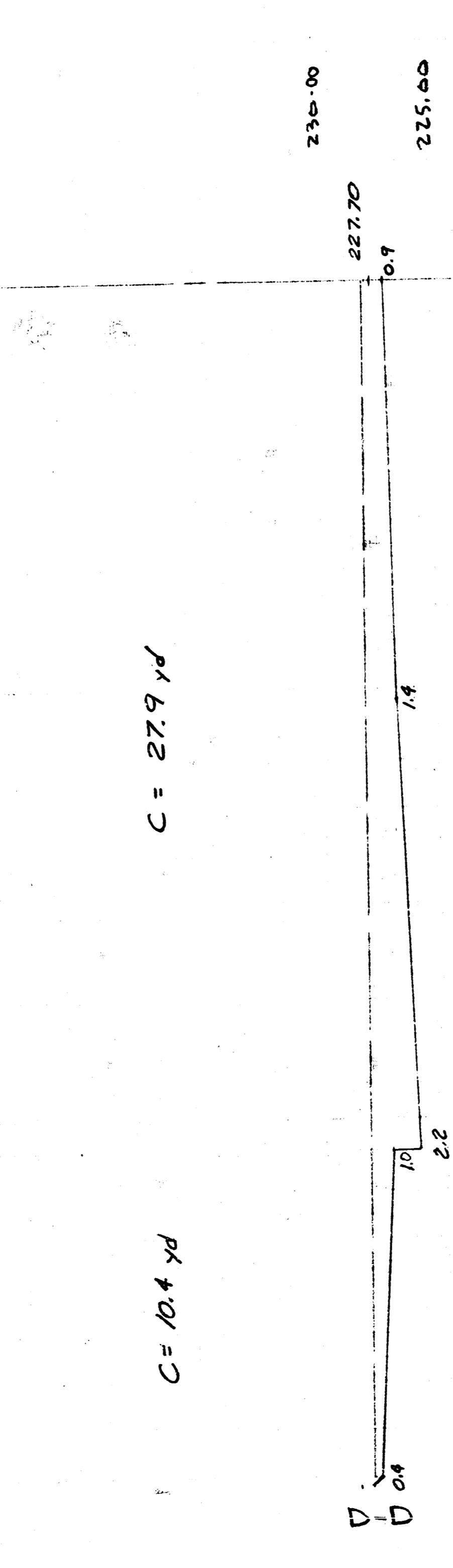
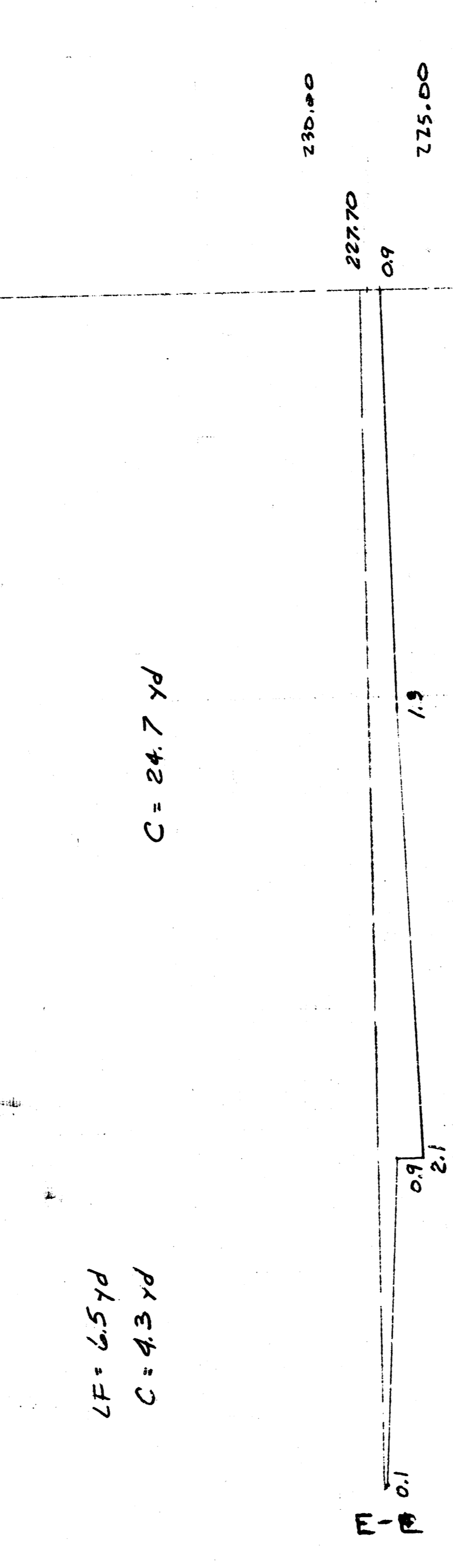
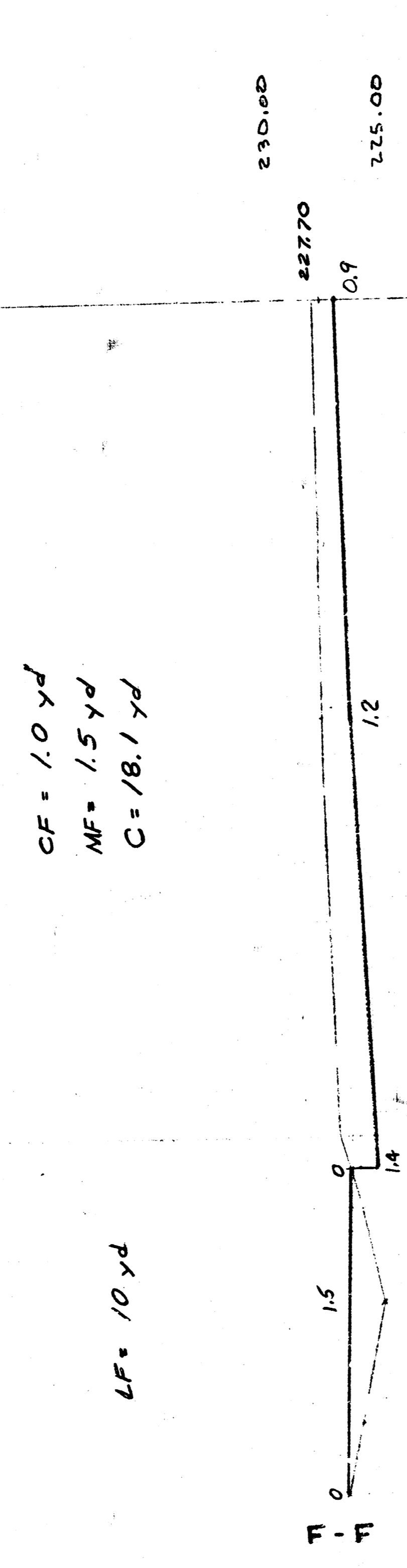
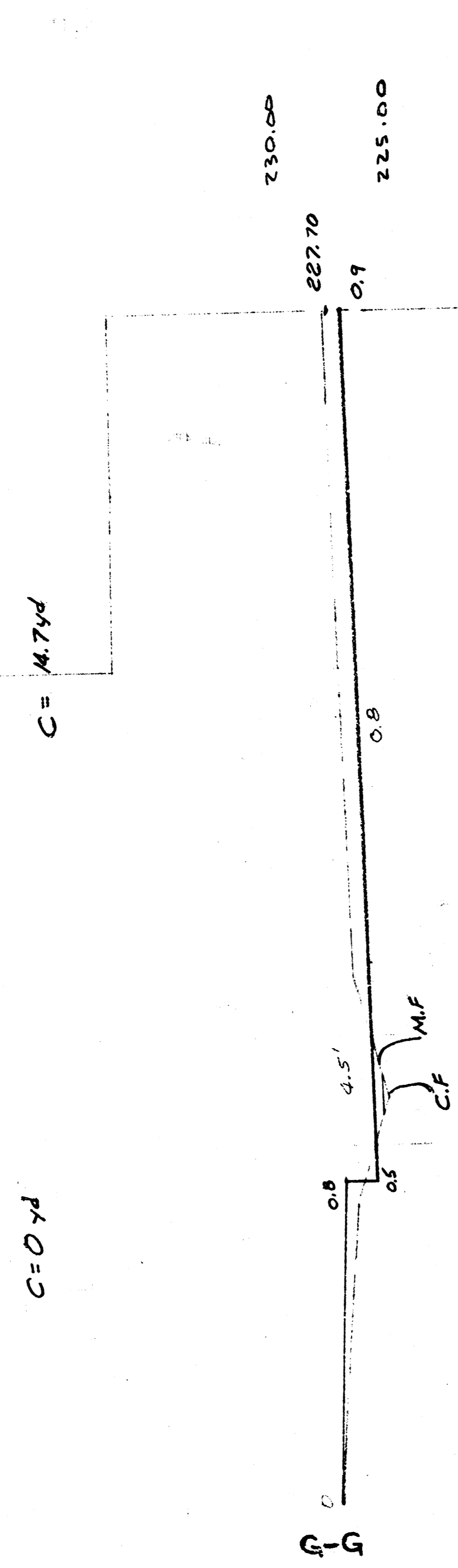
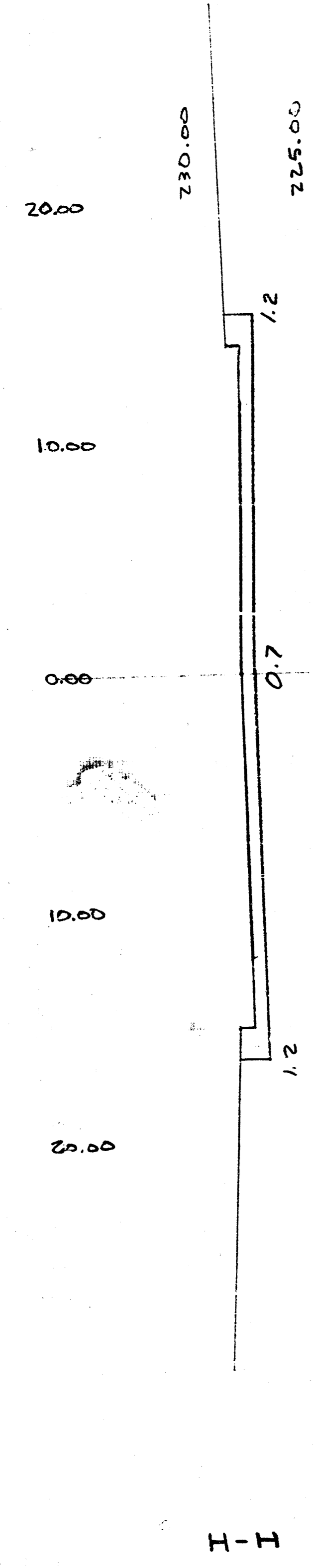
THE CONTRACTOR SHALL CONTACT THE OWNER'S ENGINEER AT 262-2691, FOR INFORMATION PERTAINING TO ACCEPTABLE LOCATIONS FOR THE DISPOSITION OF WASTE MATERIAL. WASTE MATERIAL SHALL BE BLADED SMOOTH AND SLOPED TO DRAIN. WASTE MATERIAL NOT USED ON SITE SHALL BE DISPOSED OF IN ACCORDANCE WITH THE STANDARD SPECIFICATIONS.

EARTHWORK

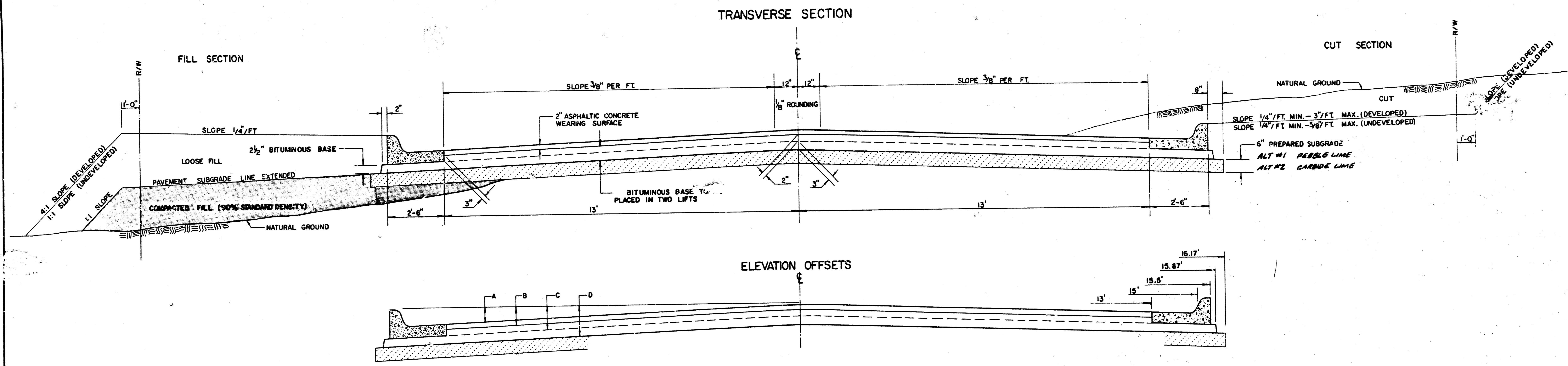
1. Excavation			
X-sections	217	CYD	
10%	22	CYD	
Total	239	CYD	
2. Manipulated Fill			
X-sections	2	CYD	
10%		CYD	
Total	2	CYD	
3. Compacted Fill			
X-sections	1	CYD	
10%		CYD	
Total	1	CYD	
4. Loose Fill			
X-sections	17	CYD	
10%	2	CYD	
Total	19	CYD	
5. Subgrade Manipulation	548	SYD	

Note: Subgrade Manipulation shall be paid for on a square yard basis, all other earthwork shall be subsidiary to the project and will not be paid for separately.

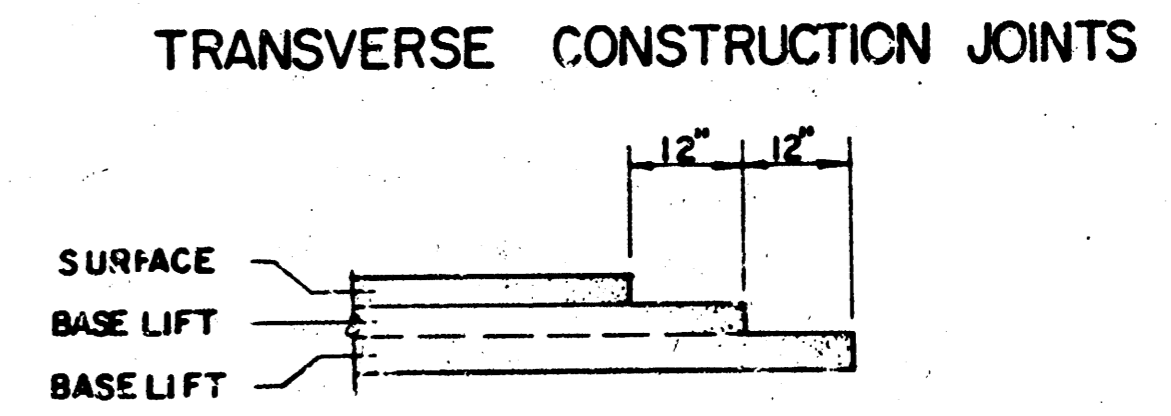
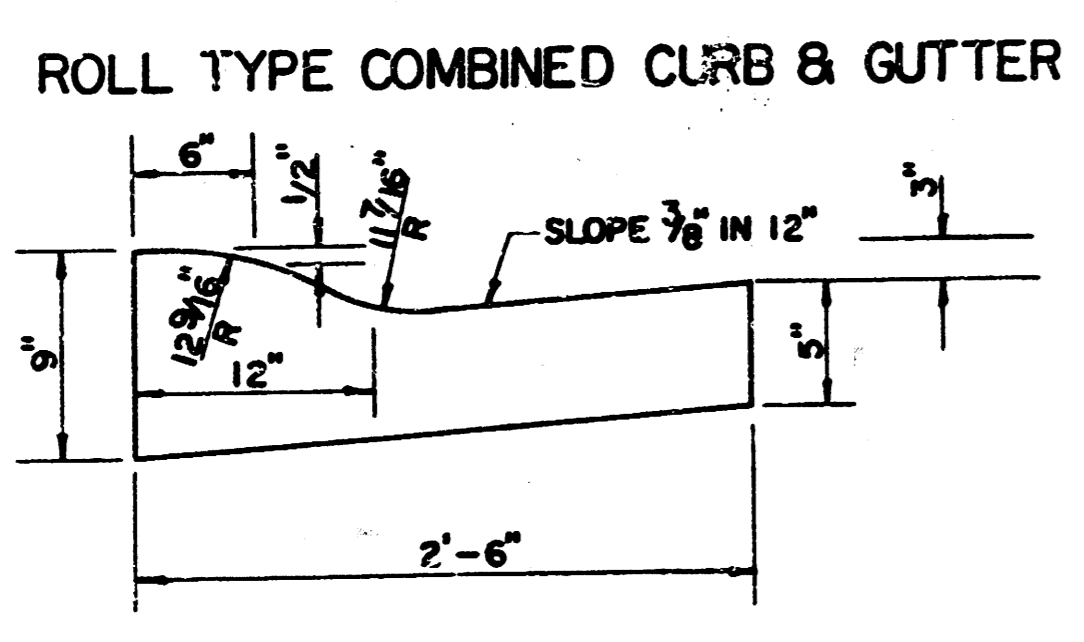
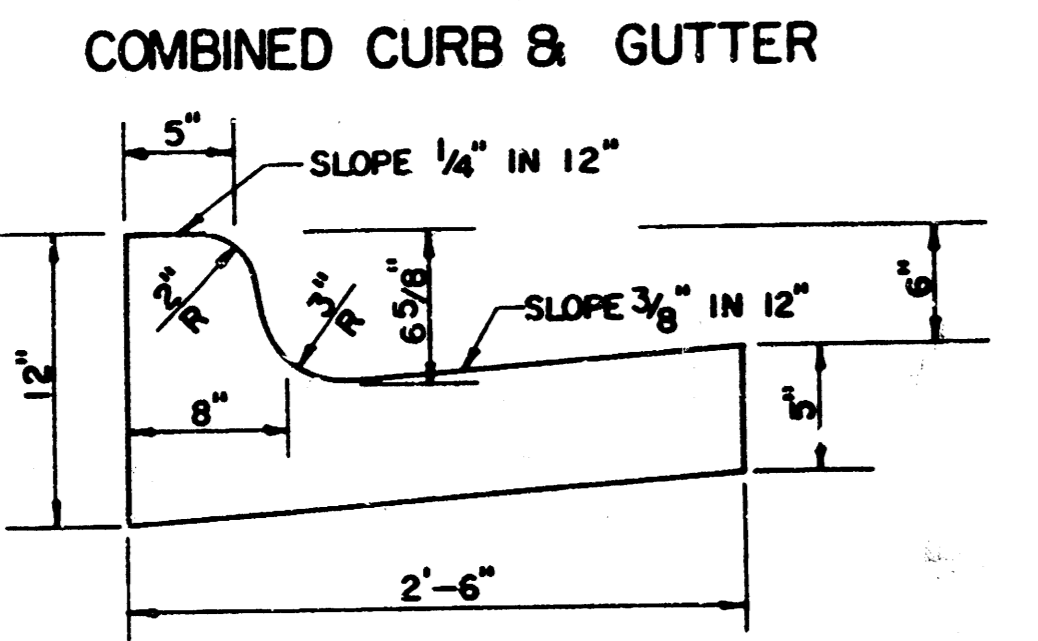
	Revision	By	Date
	CITY OF WICHITA, KANSAS MICHAEL E. LINDEBAN P.E., CITY ENGINEER 20TH. ST. N. CUL-DE-SAC TIMBROOK 3RD. ADDITION C. of W. Proj. No. 472-76-245-81508-000-001		
	PROFESSIONAL ENGINEERING CONSULTANTS, P.A. ENGINEERS WICHITA, KANSAS		
	Designed by KLR	Job No. 34-86130-3	Sheet 1 of 4
Drawn by TDS	Date March, 1986		



TYPICAL 3' PAVEMENT DETAILS



	DISTANCE FROM CENTERLINE (LT. & RT.)												
	0'	2'	4'	6'	7.5'	10'	12'	13'	15'	15.5'	15.67'	16.17'	
A: TOP OF CURBS TO TOP OF SURFACE LIFT	0.10	0.14	0.21	0.27	0.32	0.39	0.46	0.49	—	—	—	—	
B: TOP OF CURBS TO TOP OF UPPER BASE LIFT	0.27	0.31	0.38	0.44	0.49	0.56	0.63	0.66	—	—	—	—	
C: TOP OF CURBS TO TOP OF LOWER BASE LIFT	0.44	0.49	0.57	0.64	0.70	0.79	0.87	0.90	0.98	1.00	1.00	—	
D: TOP OF CURBS TO TOP OF SUBGRADE	0.69	0.73	0.80	0.87	0.93	1.01	1.08	1.12	1.19	1.21	1.21	1.23	



GENERAL NOTES

- 1) THE ASPHALTIC CONCRETE PAVEMENT BETWEEN THE COMBINED CURB AND GUTTER SHALL BE PAID AS SQUARE YARDS OF 7" ASPHALTIC CONCRETE (5" BITUMINOUS BASE).
- 2) THE BITUMINOUS BASE UNDER AND BEHIND THE COMBINED CURB AND GUTTER SHALL BE PAID AS SQUARE YARDS OF 2 1/2" BITUMINOUS BASE.
- 3) A TACK COAT OF EMULSIFIED ASPHALT (SC-1H OR CSS-1H) SHALL BE APPLIED AT AN APPROXIMATE RATE OF 0.05 GALLONS PER SQUARE YARD BETWEEN EACH LIFT OF ASPHALTIC MATERIAL.
- 4) BITUMINOUS BASE AND ASPHALTIC CONCRETE WEARING SURFACE SHALL BE PLACED WITH A LAYDOWN MACHINE HAVING AUTOMATIC CONTROLS FOR LINE AND GRADE.
- 5) CONSTRUCTION JOINTS IN EACH LIFT SHALL BE STAGGERED A MINIMUM DISTANCE OF ONE (1) FOOT FROM JOINTS IN PRECEDING LIFTS AND PLACED SO THAT A JOINT WILL BE CONSTRUCTED ON THE CENTERLINE OF THE TOP LIFT.
- 6) CONTRACTOR TO BID ONLY ONE SUBGRADE TREATMENT ALTERNATE WHEN ALTERNATES ARE PROVIDED IN THE PROPOSAL AND CONTRACT. THE ALTERNATE CHOSEN BY THE SUCCESSFUL BIDDER SHALL BE USED IN CONSTRUCTING THIS PROJECT.

TRANSVERSE CONSTRUCTION JOINTS SHALL BE CONSTRUCTED IN FLEXIBLE BASE PAVEMENTS AT LOCATIONS WHERE PAVEMENT JOINTS EXISTING FLEXIBLE BASE PAVEMENT AS SHOWN BY THE DETAIL. ALL COSTS ASSOCIATED WITH THE CONSTRUCTION OF THE TRANSVERSE JOINT SHALL BE INCLUDED IN THE BID PRICE FOR SQUARE YARDS 7" ASPHALTIC CONCRETE (5" BITUMINOUS BASE).

7 INCH RESIDENTIAL ASPHALTIC CONCRETE PAVEMENT WITH 5 INCH BITUMINOUS BASE
CITY OF WICHITA, KANSAS
PROJECT NUMBER