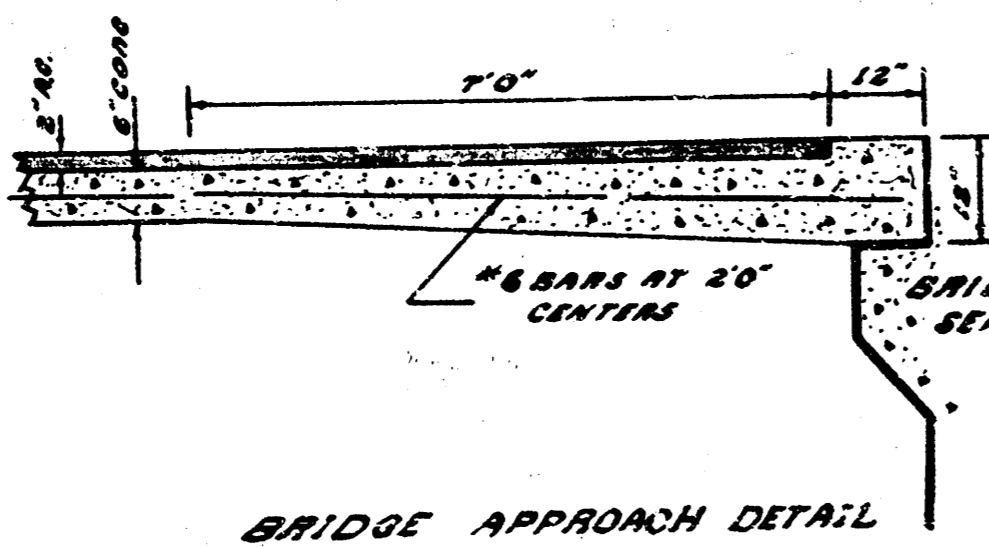
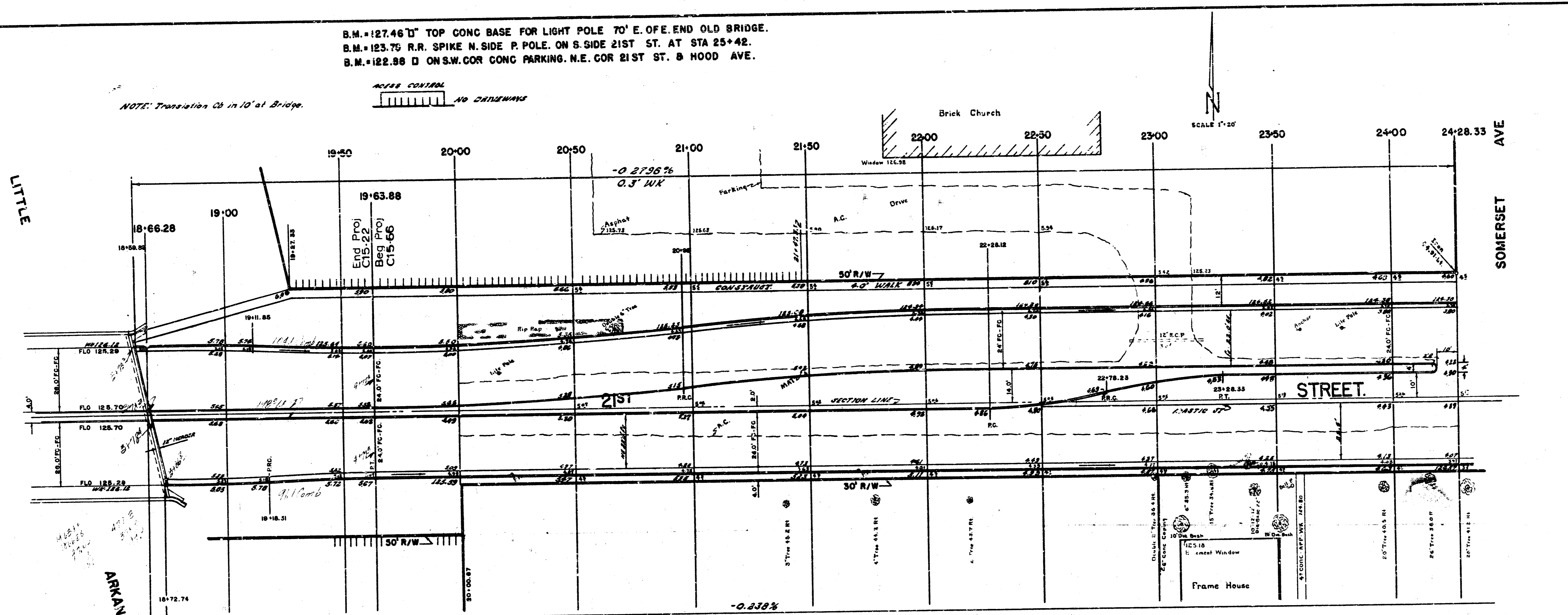
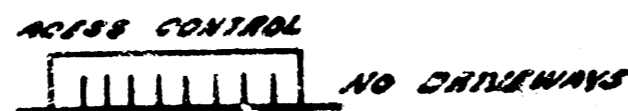


B.M. = 127.46 D TOP CONC BASE FOR LIGHT POLE TO E. OF E. END OLD BRIDGE.
 B.M. = 123.75 R.R. SPIKE N. SIDE P. POLE. ON S. SIDE 21ST ST. AT STA 25+42.
 B.M. = 122.88 D ON S.W. COR CONC PARKING. N.E. COR 21ST ST. & HOOD AVE.

NOTE: Precipitation 0.8 in 10' at Bridge.



NOTE: FIELD ENGINEER TO CROSS-SECTION FOR EARTH QUANTITIES PRIOR TO CONSTRUCTION BETWEEN EXISTING BRIDGE TO AND INCLUDING STATION 20+80.

COMP FILL	EXCAVATION
308.0 Cu Yds	114.0 Cu Yds
123.5 Cu Yds	102.1 Cu Yds
TOTAL 431.5 Cu Yds	TOTAL 216.1 Cu Yds

PROJ C15-22

COMP FILL	EXCAVATION
303.1 Cu Yds	2,539.6 Cu Yds
102.3 Cu Yds	102,260.0 Cu Yds
TOTAL 405.4 Cu Yds	TOTAL 204,799.6 Cu Yds

PROJ C15-66

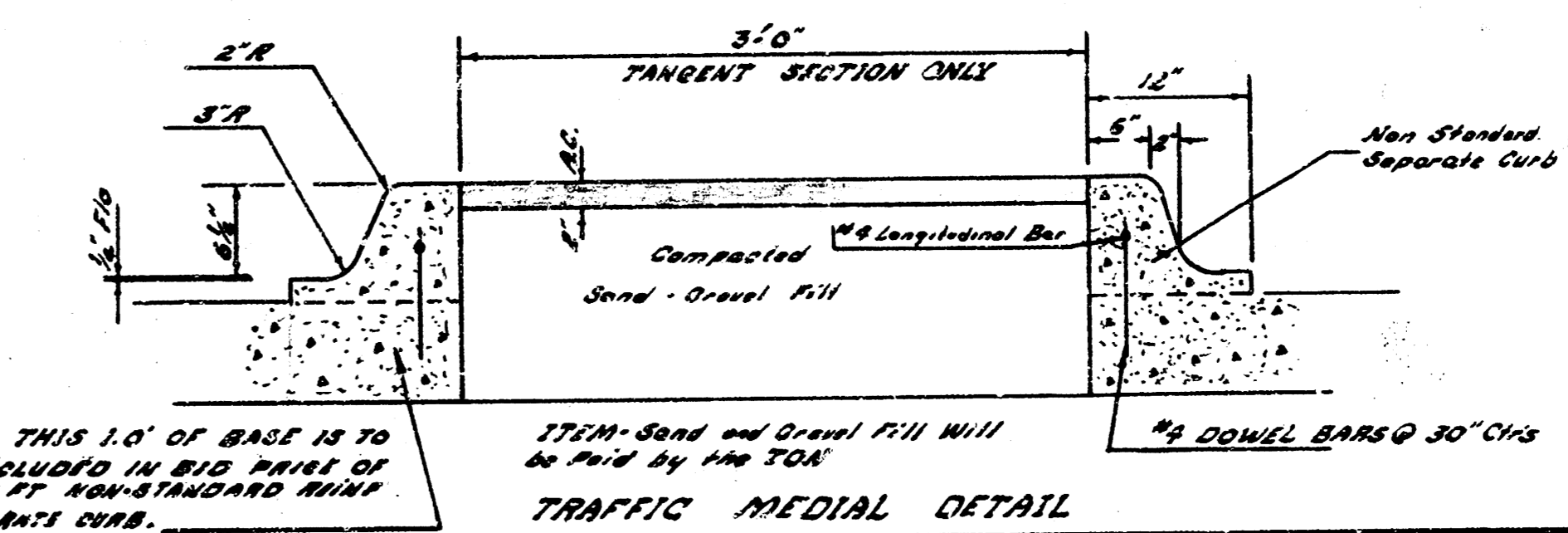
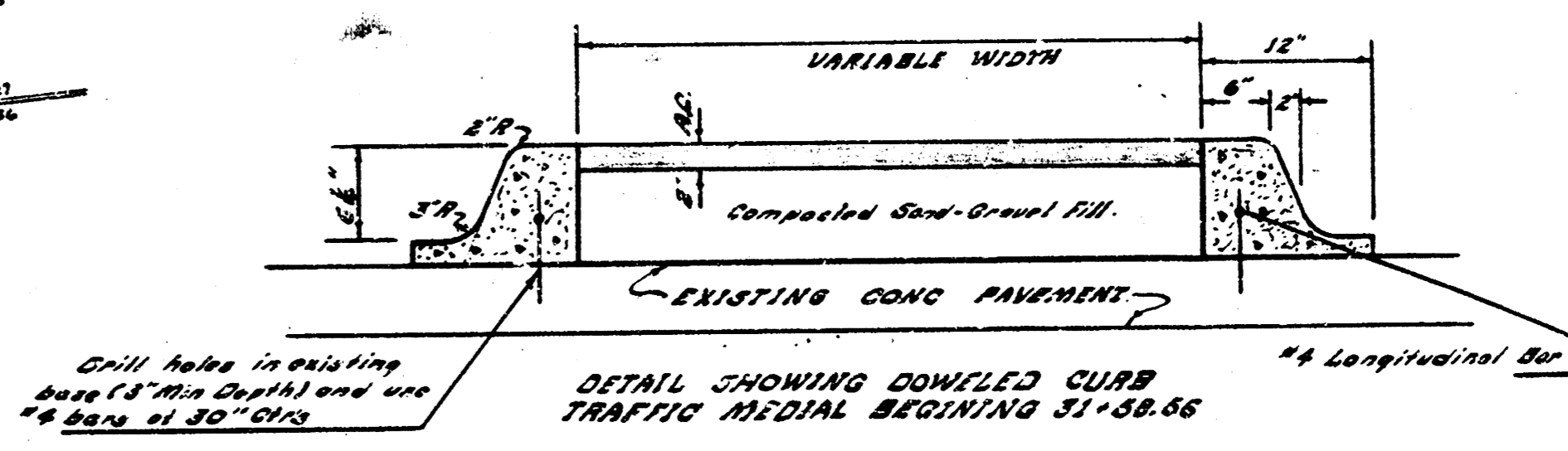
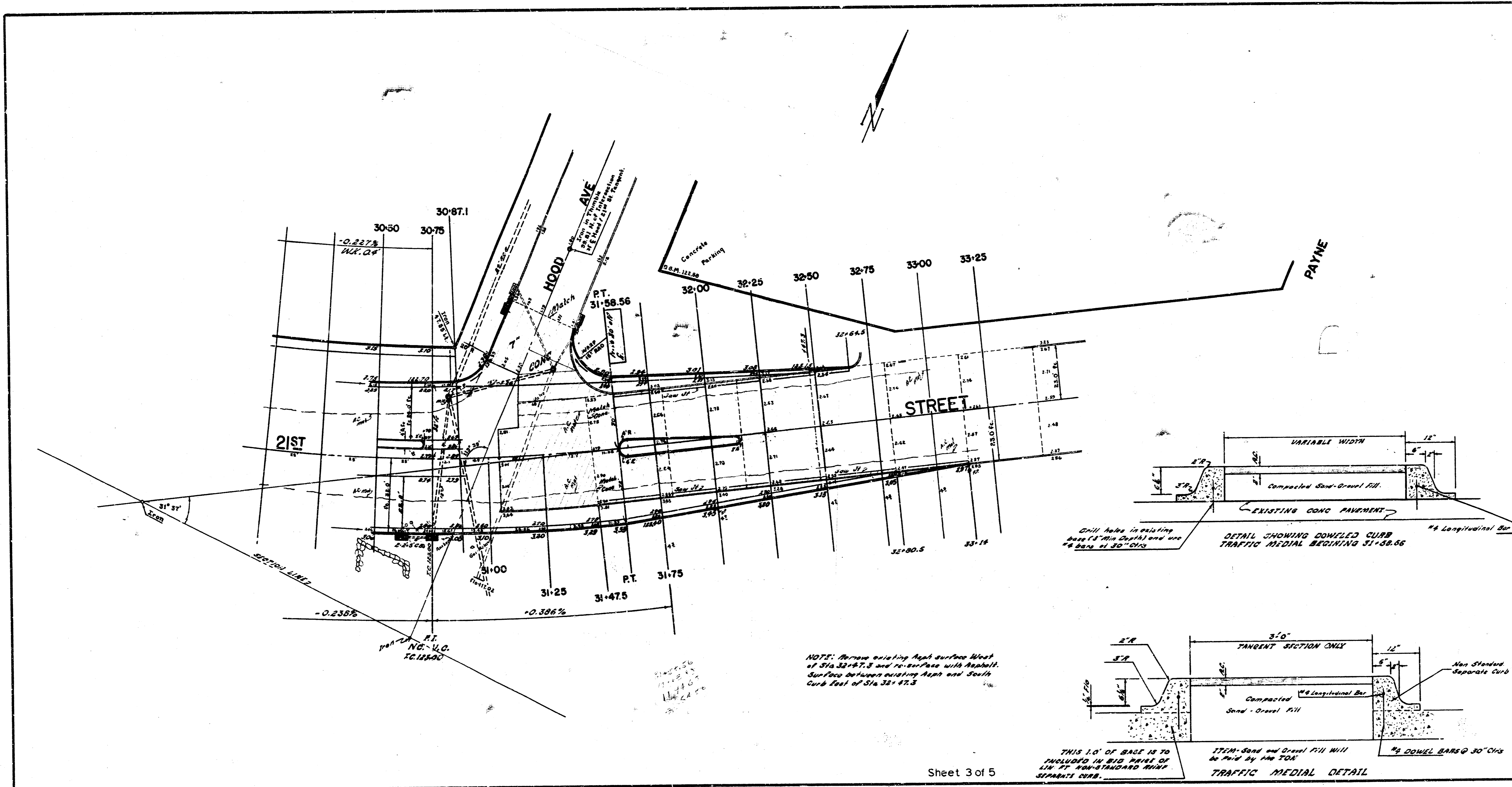
VOLUME OF ASPH PAVT IS INCLUDED IN CUBIC YARDS OF EXCAVATION

Sheet 1 of 5

21st STREET.
 From a point 200 E. of E.L. Woodrow To a point 480 E. of E.L. Woodrow.
 BRIDGE APPROACH & ASPH PAVEMENT.
 B.E. SMITH City Engineer
 City of Wichita, Kansas
 Project No. C15-22 Date April 1966

21st STREET.
 480' E. of E.L. Woodrow to E.L. Hood Ave.
 ASPHALTIC- CONG- PAVEMENT & MEDIAL.
 B.E. SMITH City Engineer
 City of Wichita, Kansas
 Project No. C15-66 Date April 1966





NOTE: Remove existing Asphalt surface West of Sta 32+97.3 and re-surface with Asphalt. Surface to include existing depth and South Curb feet of Sta 32+42.3.