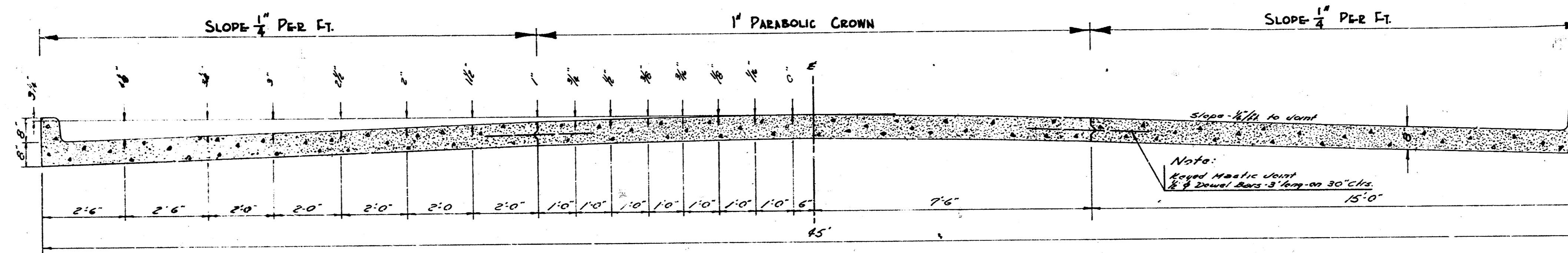


21ST ST.
TYPICAL SECTION
45'-8" CONCRETE
CLEVELAND - W.L. CANAL

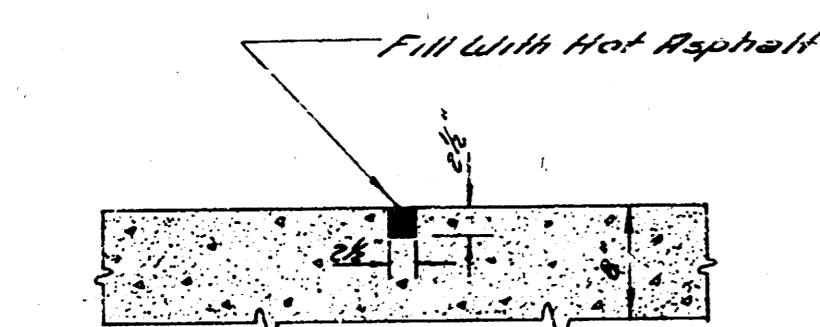
NOTE-

WHERE CURBS IN THE SAME SECTION ARE NOT AT SAME ELEV. USE ELEV. SHOWN ON PLAN FOR CONST. JOINT.



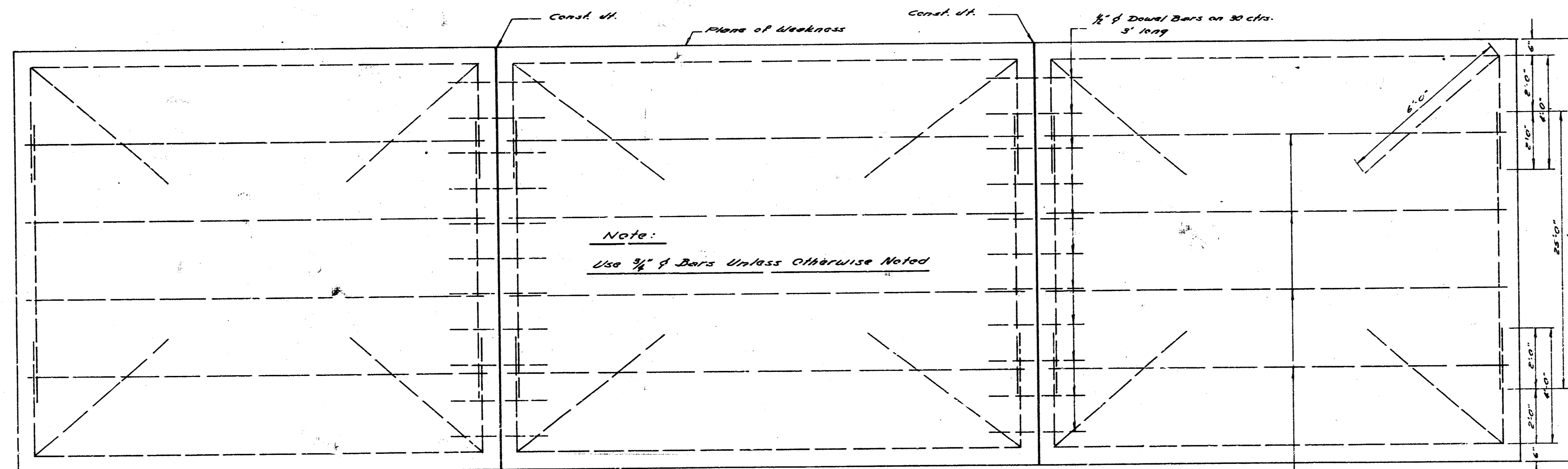
TYPICAL SECTION

NO SCALE



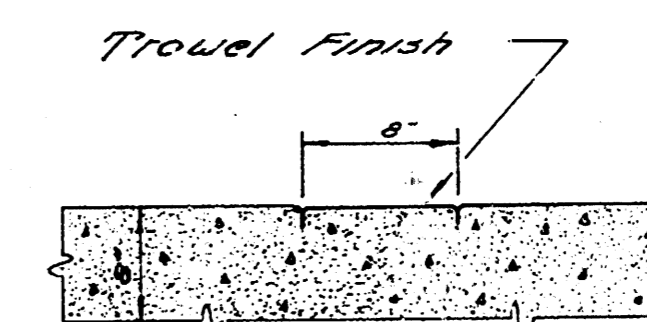
CONTRACTION JOINT DETAIL

NO SCALE



STEEL PATTERN

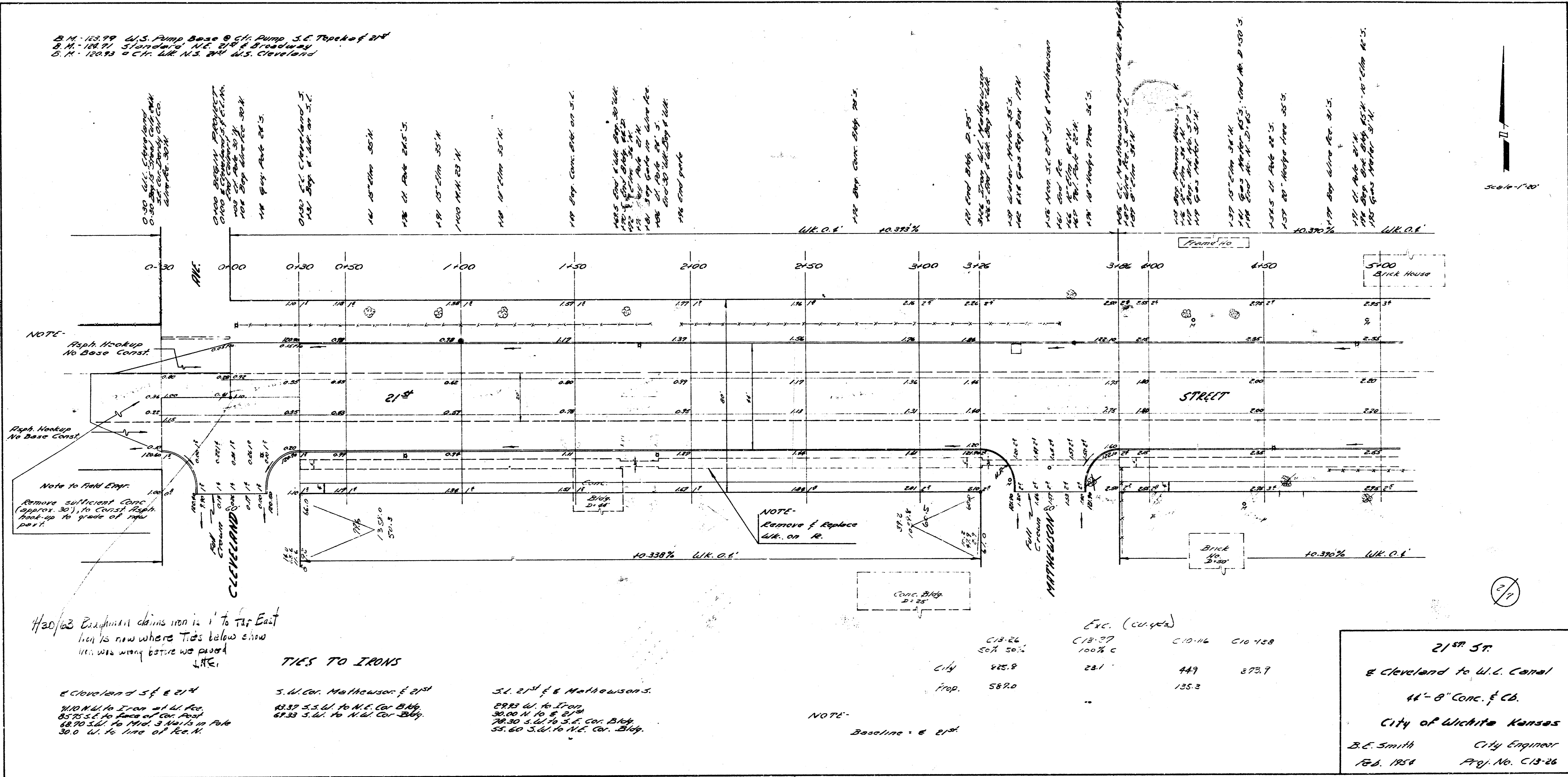
NO SCALE



MARKER DETAIL

NO SCALE





B.M. 12279 U.S. Pump Base @ Ch. Pump S.E. Top of 2nd
 B.M. 12271 Standard N.E. 21st & Broadway
 B.M. 12083 Ch. W.L. N.S. 2nd U.S. Cleveland

NOTE:
 Rapt. Hookup
 No Base Const.

NOTE:
 Rapt. Hookup
 No Base Const.

Note to Field Engr.
 Remove sufficient Conc.
 (approx 30') to Const. Rapt.
 Hookup to grade of new
 pass.

NOTE:
 Remove & Replace
 cur. on R.

Had/23 Existing claims iron is 1' to Top East
 line is now where Ties below show
 iron was wrong before was placed
 HERE.

TIES TO IRONS

W.L. Cleveland St & 21st
 85.75 S.E. to face of cur. Pass
 88.70 S.W. to Mid. S. Mark on Pole
 30.00 W. to line of P.C.M.

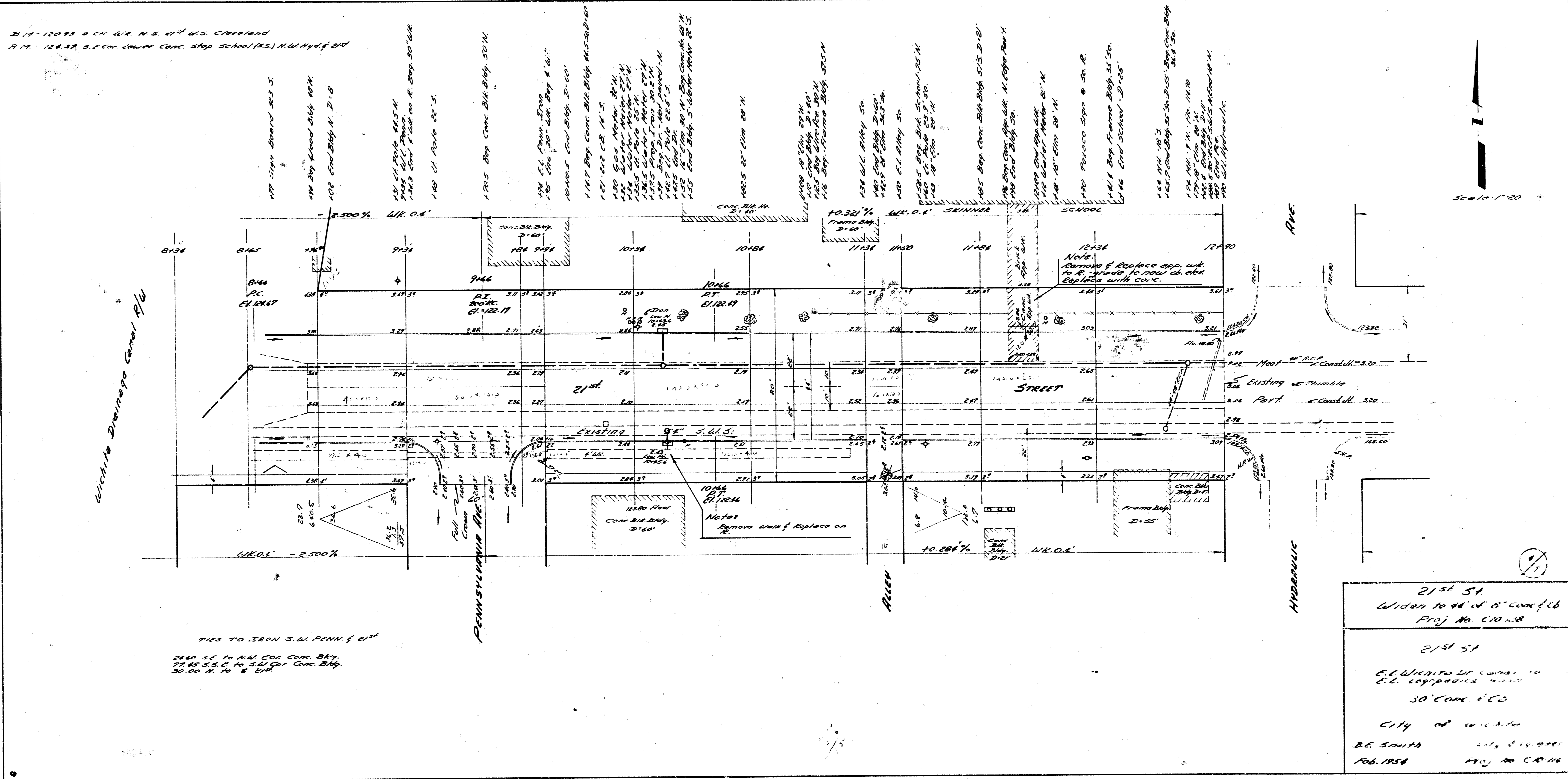
S.W. Cor. Mathewson & 21st
 83.32 S.W. to N.E. Cor. Blk.
 87.33 S.W. to N.W. Cor. Blk.

S.E. 21st & Mathewson S.
 88.83 W. to Iron
 30.00 N. to S. 21st
 78.50 S.W. to S.E. Cor. Blk.
 55.60 S.W. to N.E. Cor. Blk.

NOTE:
 Baseline = 6 21st

Exc. (cu yds)			
C13-26	C13-27	C10-16	C10-128
50% 50%	100% C		
City	485.9	449	873.9
Prop.	5870	135.3	

21st St
 & Cleveland to W.L. Canal
 44'-8" Conc. & Cb.
 City of Wichita Kansas
 B.E. Smith City Engineer
 Feb. 1924 Proj. No. C13-26



B. 17-12033 & C. 11-11, N.S. 214 U.S. CLEVELAND
 N.M. 12033 3.0' CON. LOWER CONC. STOP 30' DIA. (R.S.) N.M. Hyd. Div.

C.A.T. 17
 11/1/54
 11/1/54

Wilkie Drainage Canal Rd

PENNSYLVANIA REFINERY

ALLEN

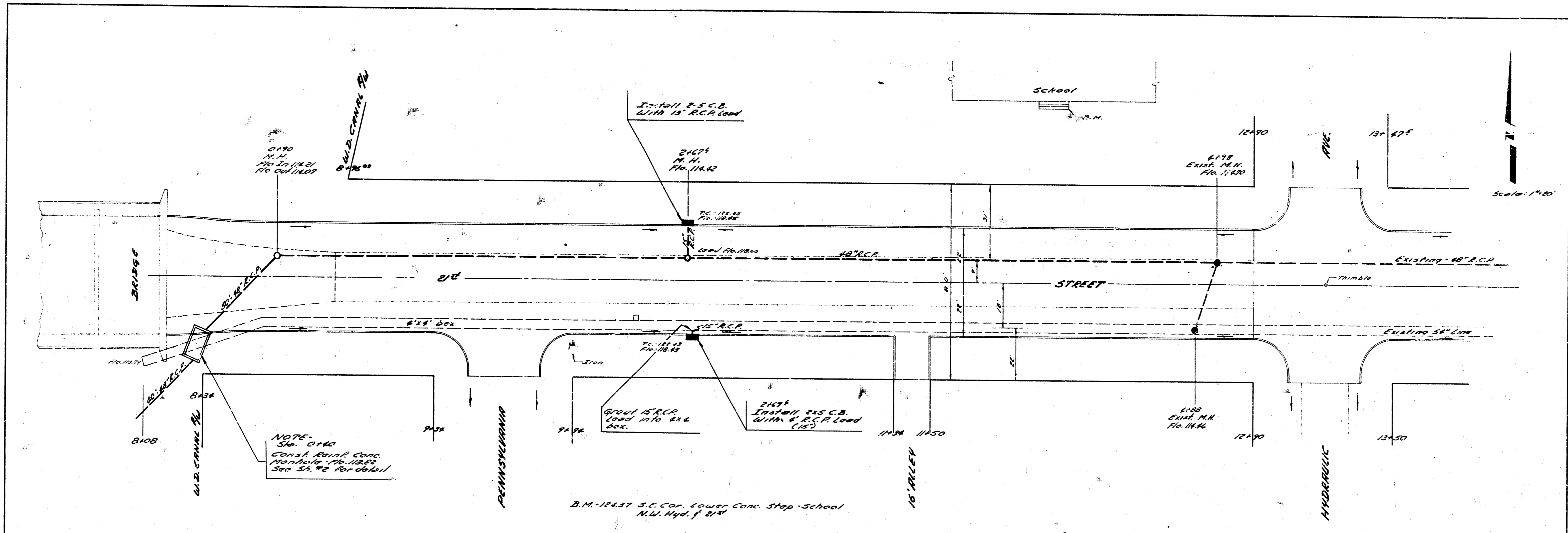
HYDRAULIC

21st St
 Widened to 48' w/ 6" concrete
 Proj. No. C10-38

 21st St
 E.L. Widened to 48' w/ 6" concrete
 E.L. Copied from 1954
 30' CONC. 1' CO

 CITY OF CLEVELAND
 B.E. SMITH City Engineer
 Feb. 1954 Proj. No. C10-38

TIES TO IRON S.W. PENN. 21st
 1740 S.W. 1st NW CON. BAY
 1740 S.W. 2nd NW CON. BAY
 30' CON. 1' CO

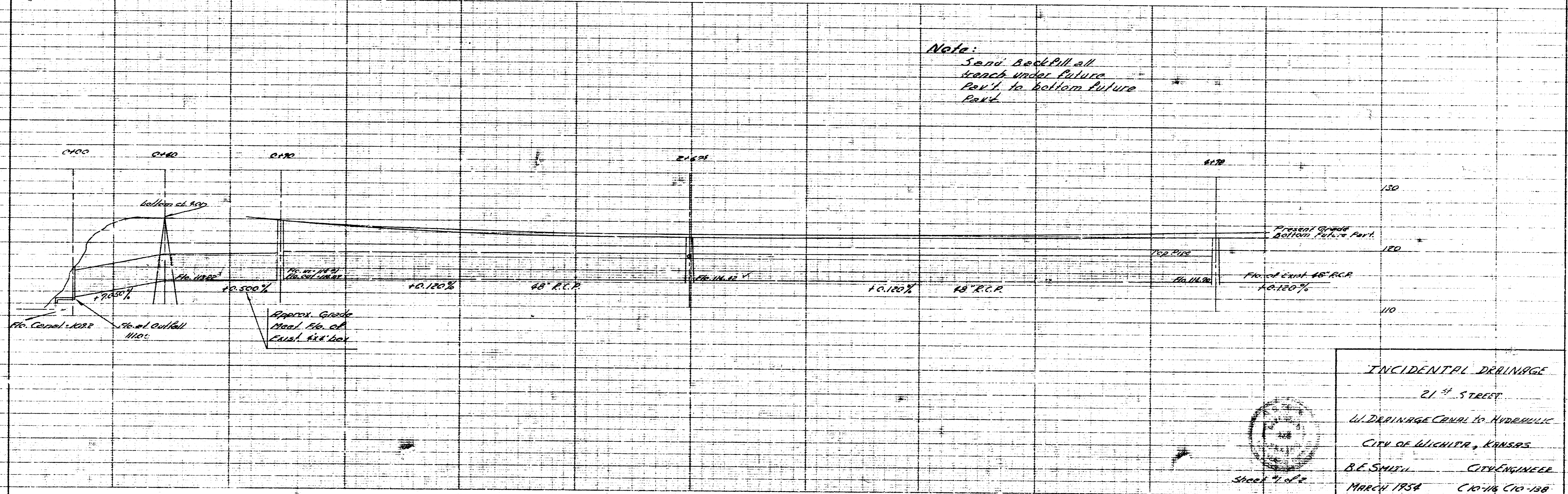


Street
 Plan
 and
 Details

NOTE:
 Sh. 0160
 Cont. 10' dia. box
 Manhole 10' dia. box
 500 Sh. #2 Per detail

B.M. 18157 S.E. Cor. Lower Conc. Stop-School
 N.W. Hgt. 7' 2"

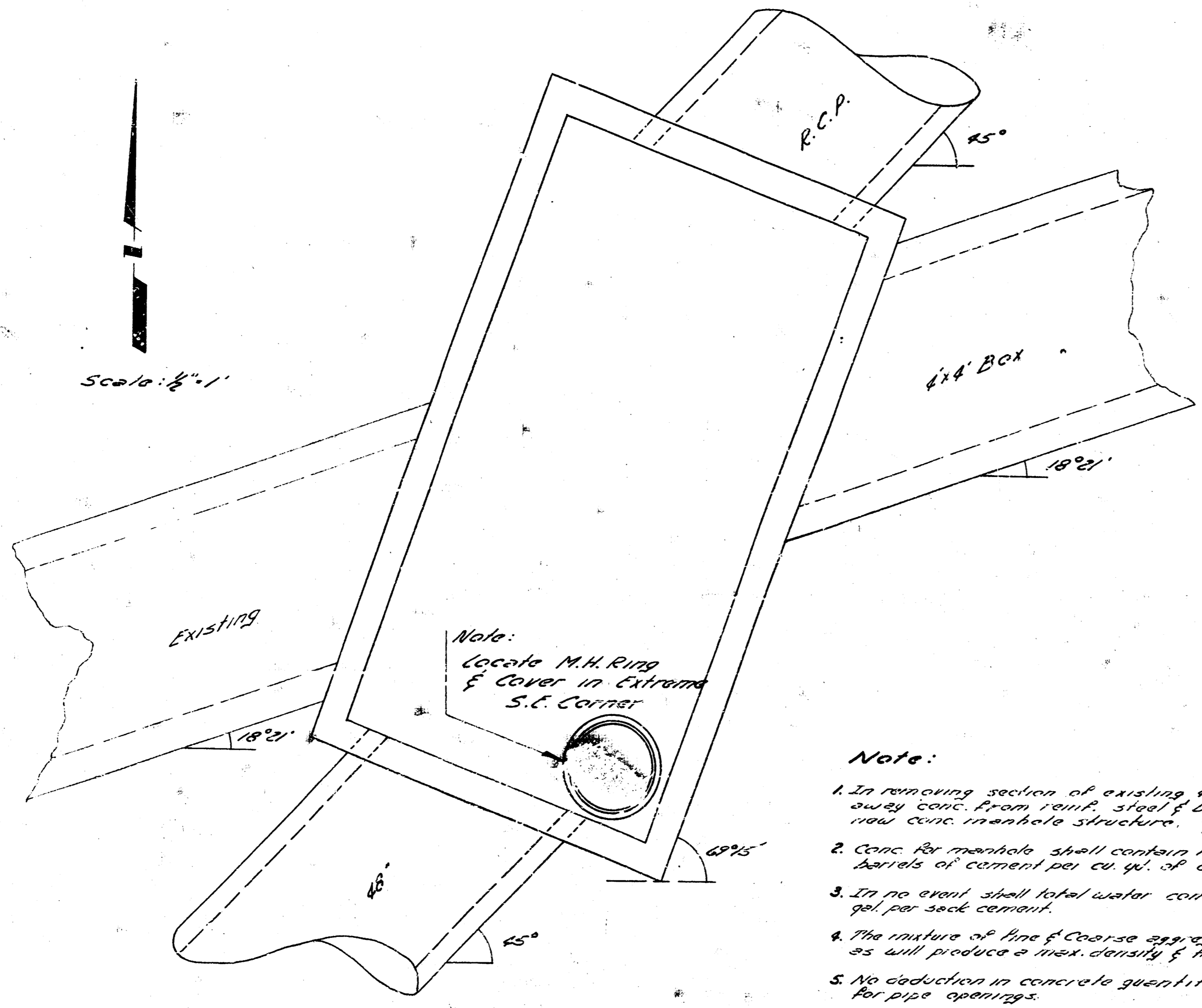
Note:
 Sand Backfill all
 trench under future
 Pav. to bottom future
 Pav.



INCIDENTAL DRAINAGE
 21st STREET
 W. DRAINAGE CANAL TO HYDRAULIC
 CITY OF WICHITA, KANSAS
 R.E. SMITH, CITY ENGINEER
 MARCH 1954 C 10-114 C10-158



Sheet 1 of 2

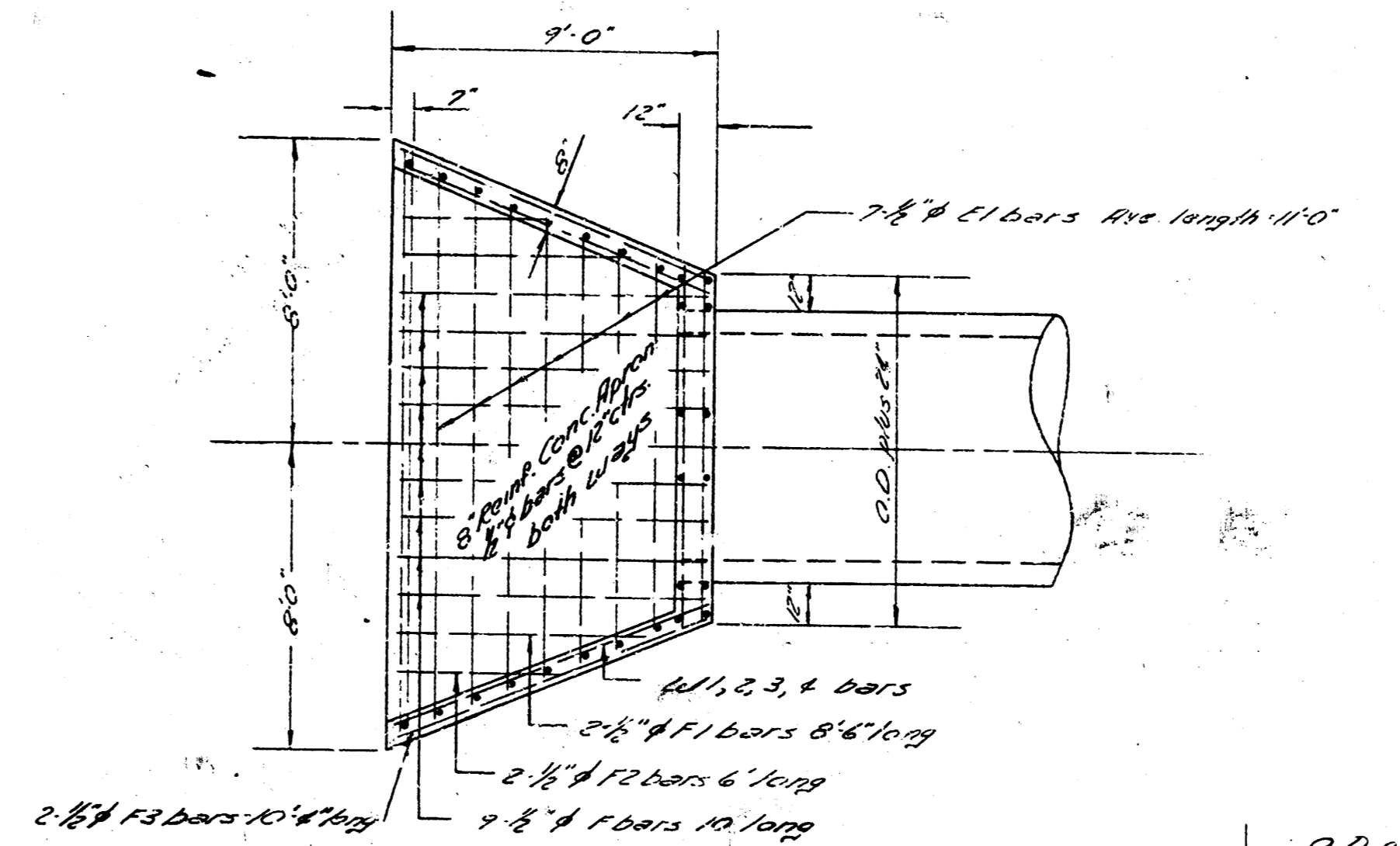


Scale: 1/4\"/>

Note:
Locate M.H. Ring
& Cover in Extremes
S.E. Corner

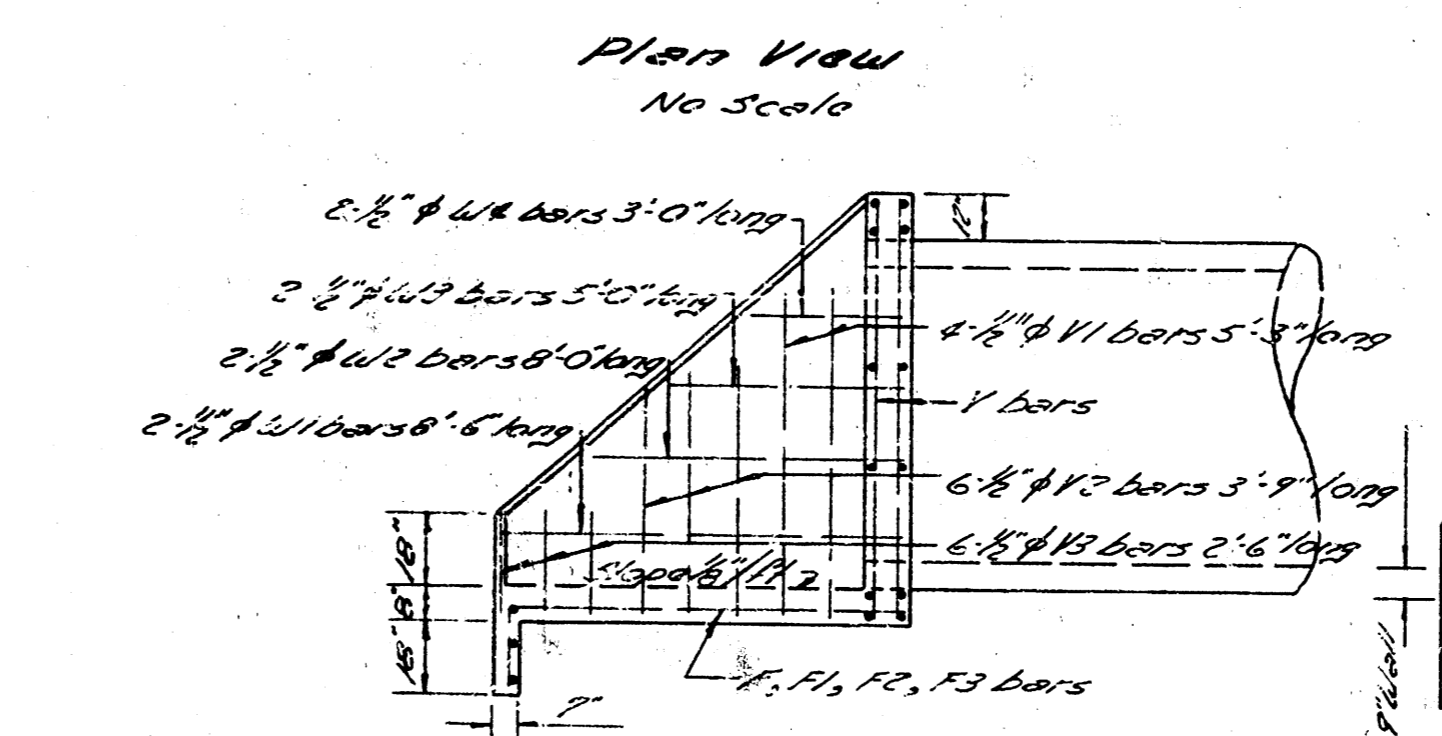
Plan View

- Note:
- In removing section of existing 24\"/>
 - Conc. for monobole shall contain not less than 165 lbs/cu yd of cement per cu yd. of concrete.
 - In no event shall total water content exceed 6.25 gal. per sack cement.
 - The mixture of fine & coarse aggregate shall be such as will produce a max. density of the max. workable mix.
 - No reduction in concrete quantities shall be made for pipe openings.
 - No internal vibrator is to be used for placing concrete.

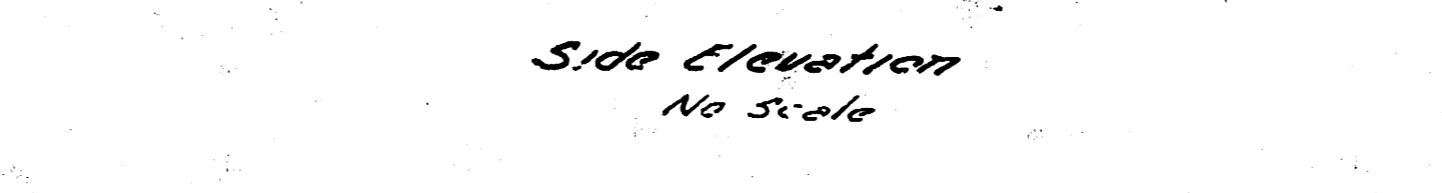


Note:
Bevel all exposed
edges with 1/4\"/>

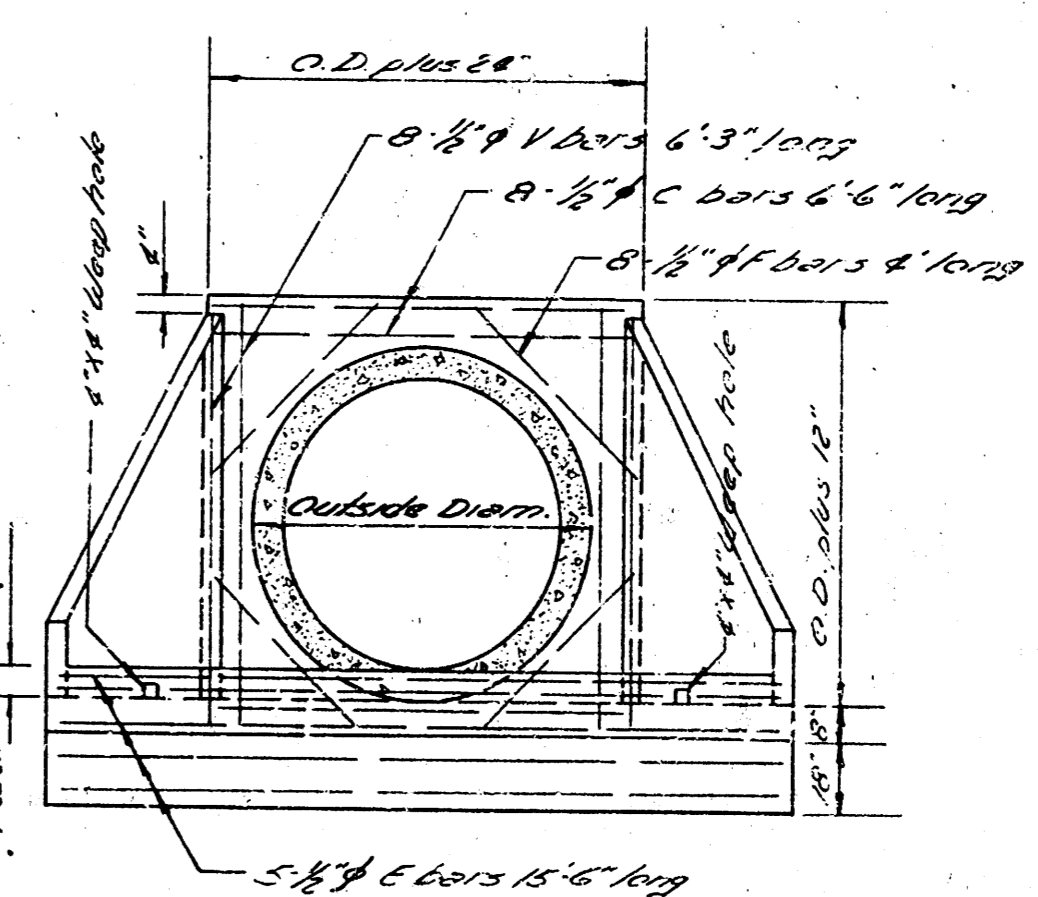
HEAD WALL DETAIL
No Scale



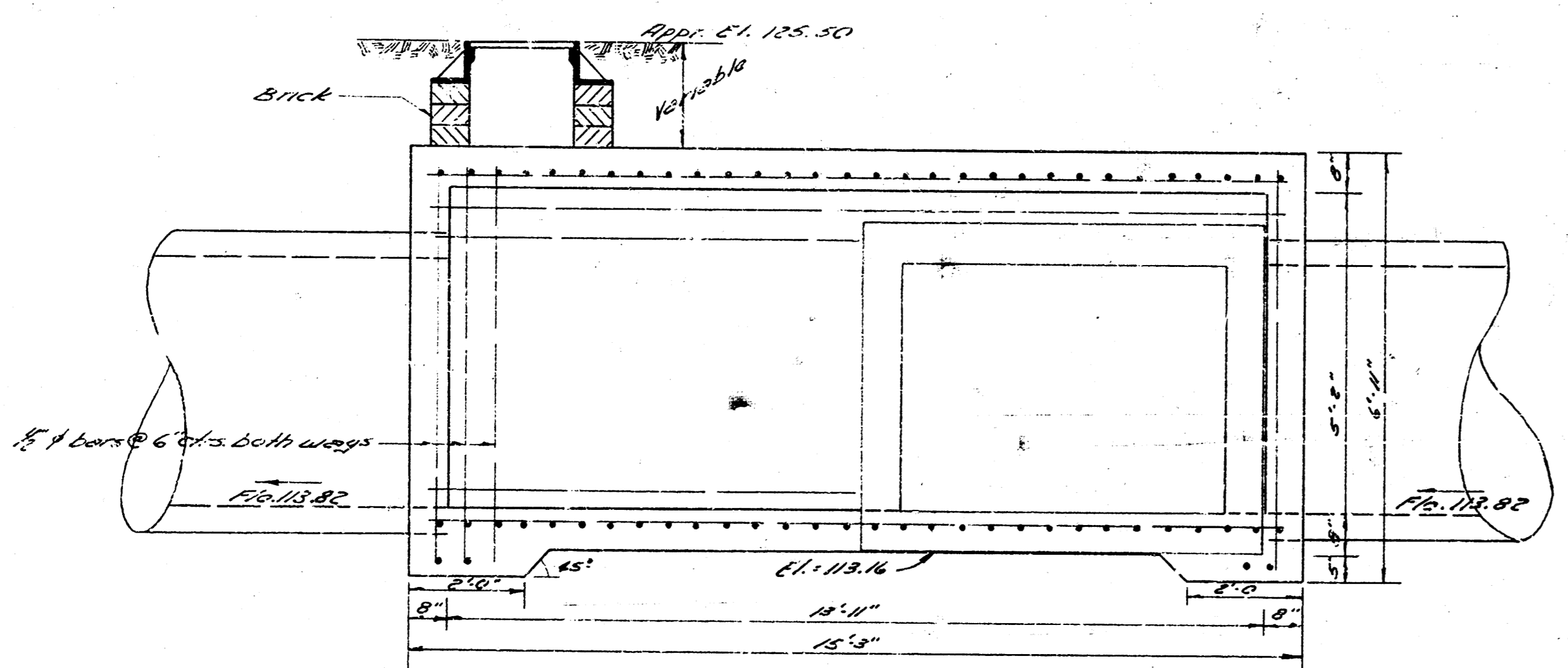
Plan View
No Scale



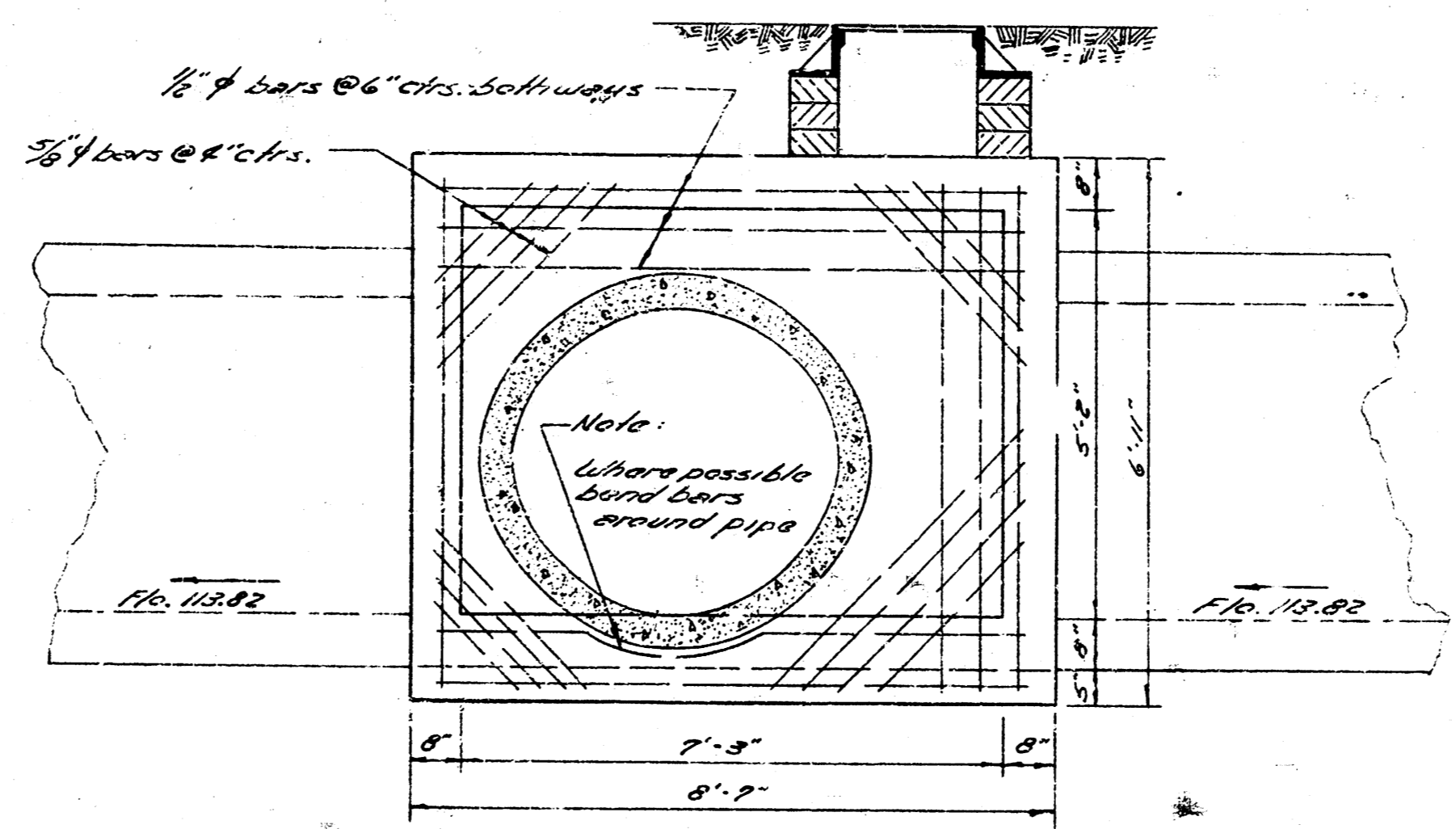
Side Elevation
No Scale



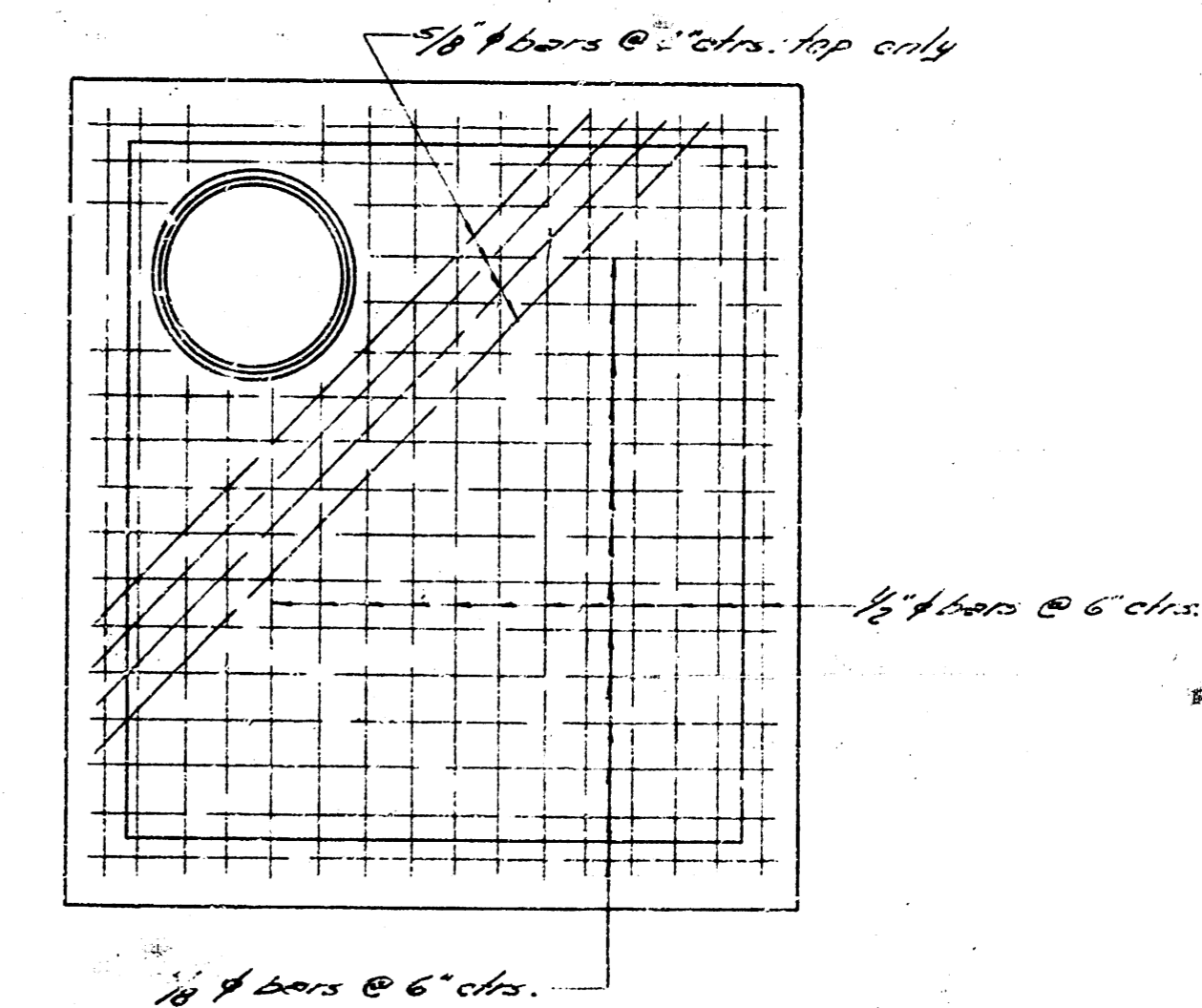
End Elevation
No Scale



Elevation



Elevation



Typical Sec. Top & Bot.
Steel Rebar
No Scale

INCIDENTAL DRAINAGE
24\"/>