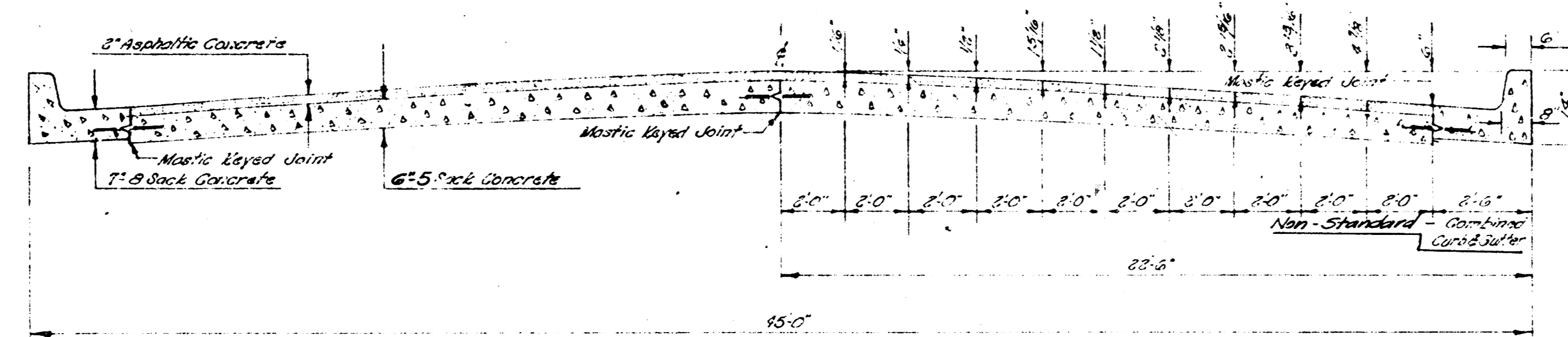
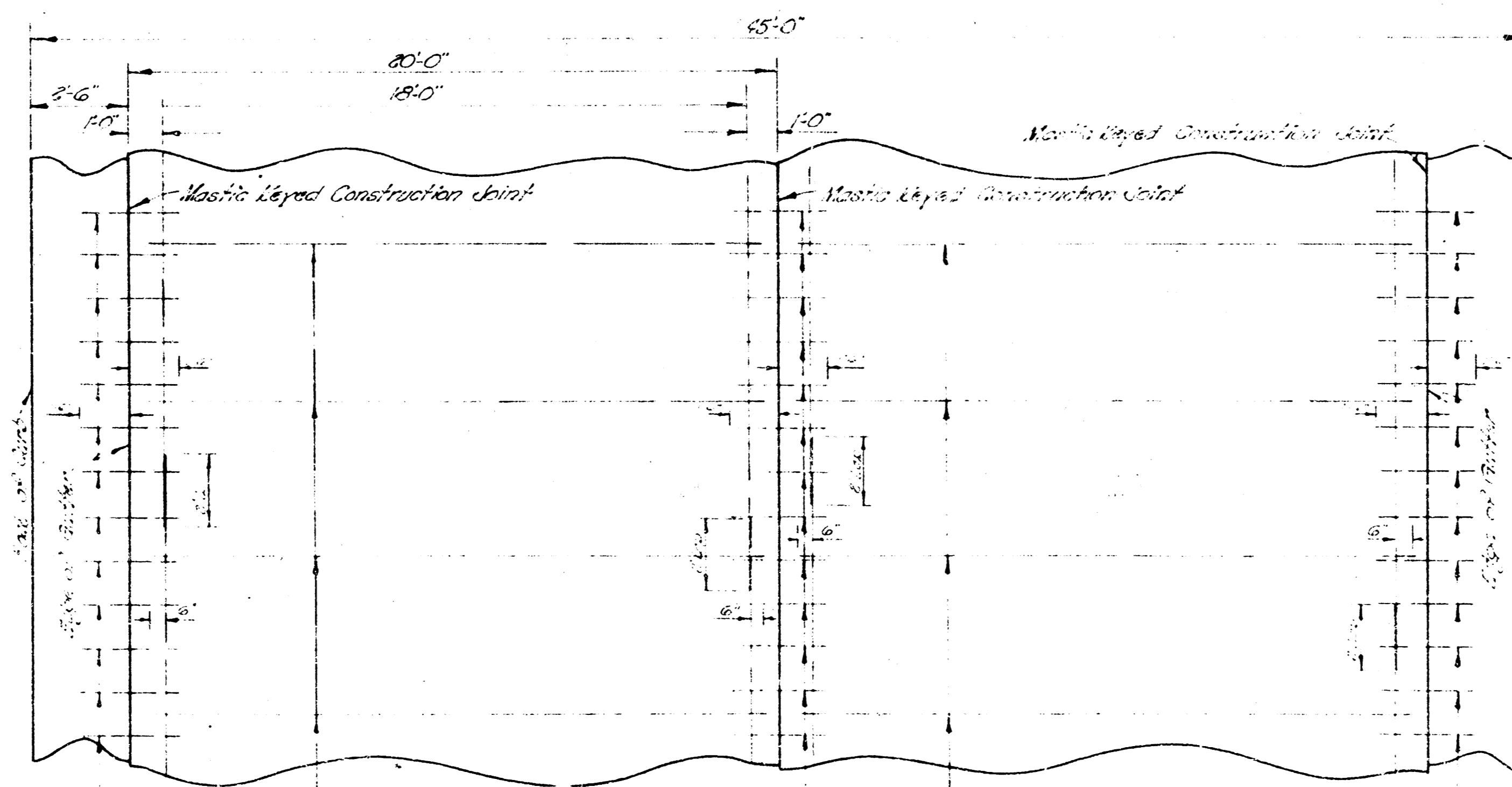


**21<sup>ST</sup> ST.**  
**E.L. LOGOPEDICS ADDN. TO E.L. HILLSIDE**  
**PROJ. C13-182 & C13-183**



**TYPICAL SECTION**  
NOT TO SCALE



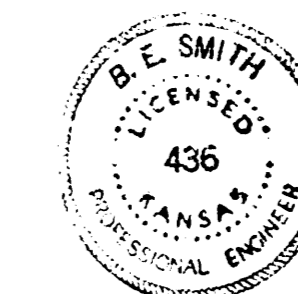
1/2" Dowel Bars, 3'-0" Long, 6'-6" Centers

3/4" Bars, 18' Long, 9'-0" Centers

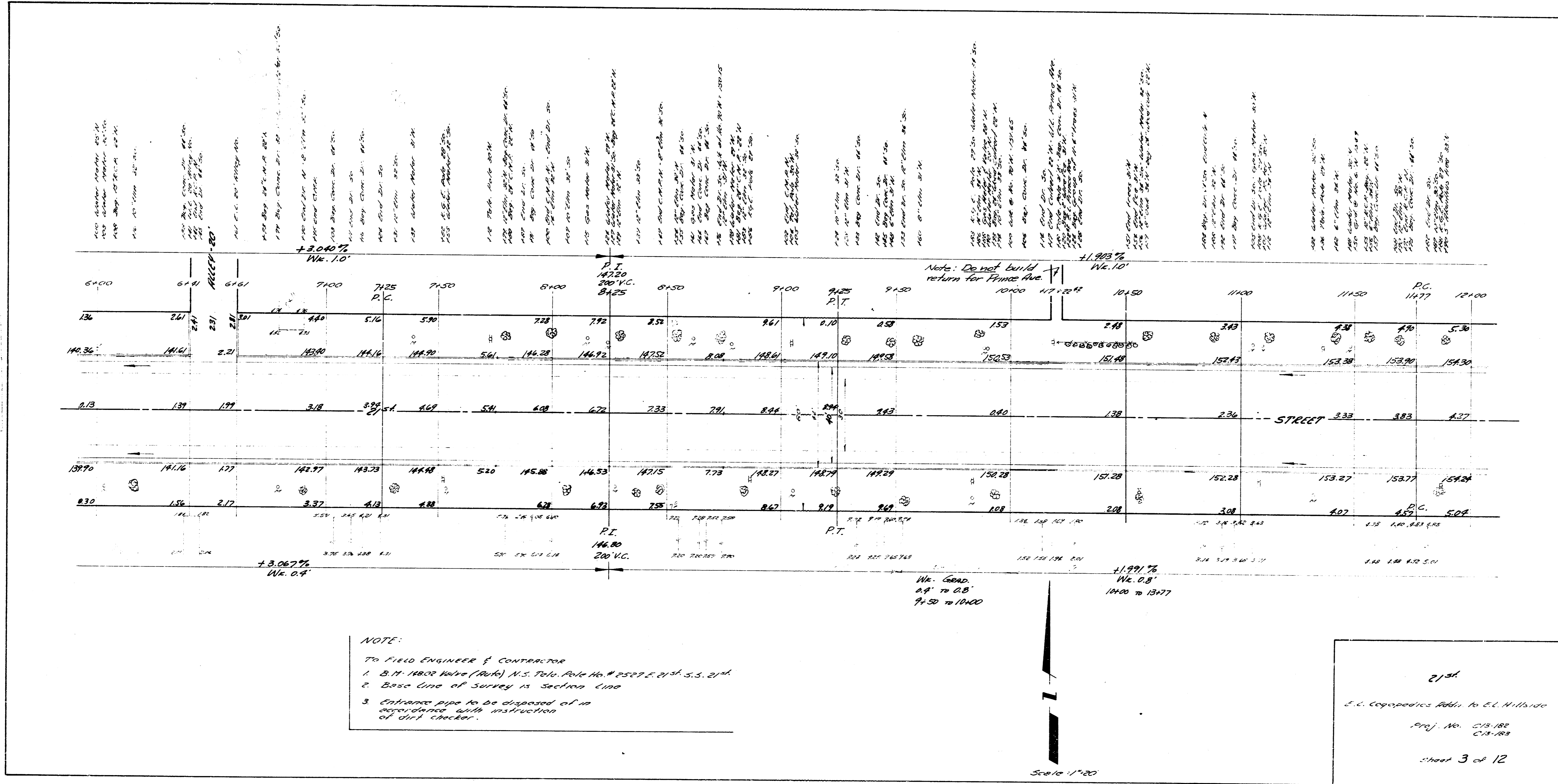
3/4" Bars, 18' Long, 9'-0" Centers

1/2" Dowel Bars, 3'-0" Long, 6'-6" Centers

**STEEL PATTERN**  
NOT TO SCALE  
USE 3/4" # BARS EXCEPT WHERE NOTED

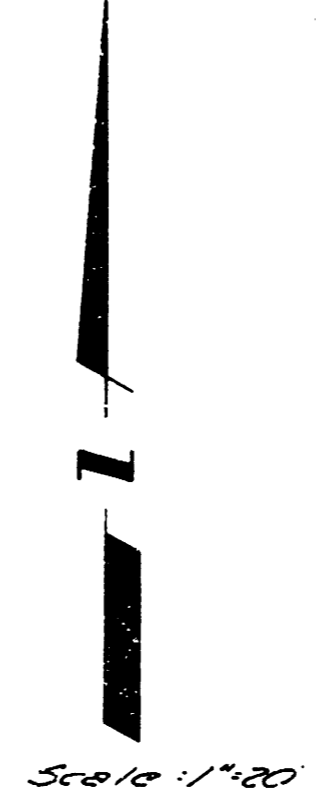




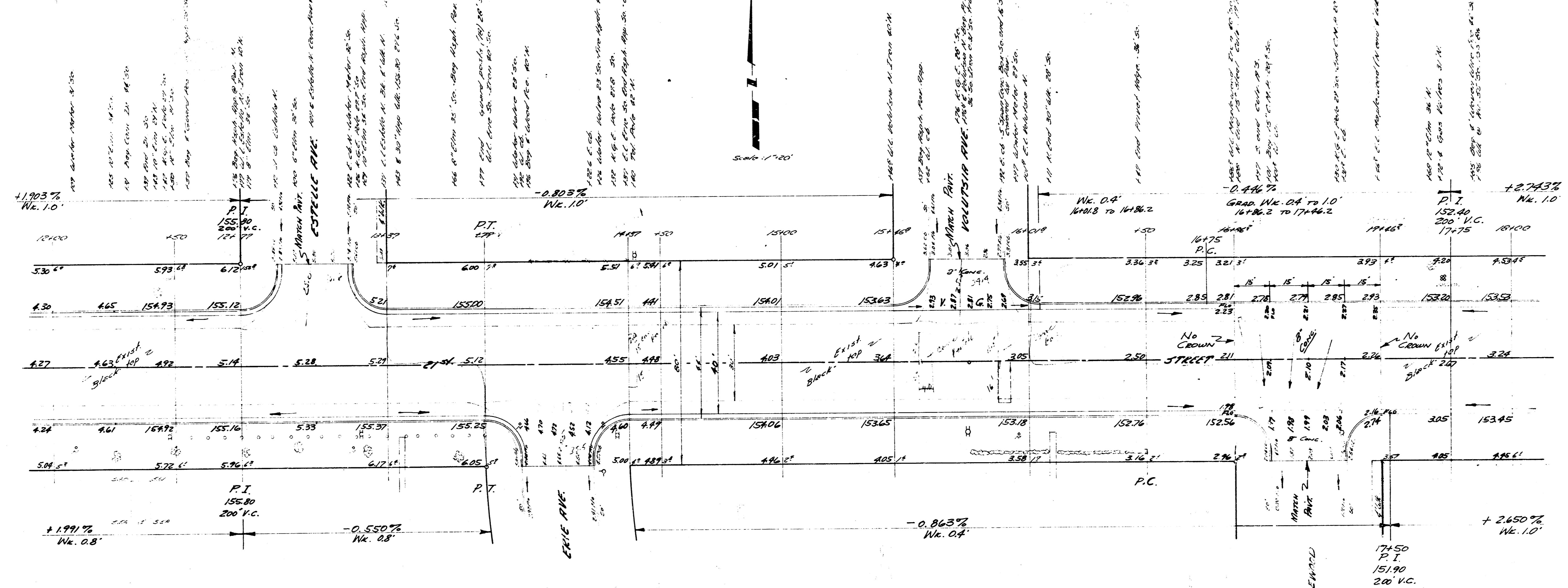


NOTE:  
 To Field Engineer & Contractor  
 1. 2 1/4" 11802 Valve (Pole) N.S. Pole No. 2507 L. 01st. S.S. 21st.  
 2. Base line of Survey is Section line  
 3. Entrance pipe to be disposed of in accordance with instructions of dirt checker.

21st  
 E.C. Copeland & Sons, Inc. to E.L. Hillside  
 Proj. No. C-1-188  
 C-1-188  
 Sheet 3 of 12



2.14 ...  
 2.15 ...  
 2.16 ...  
 2.17 ...  
 2.18 ...



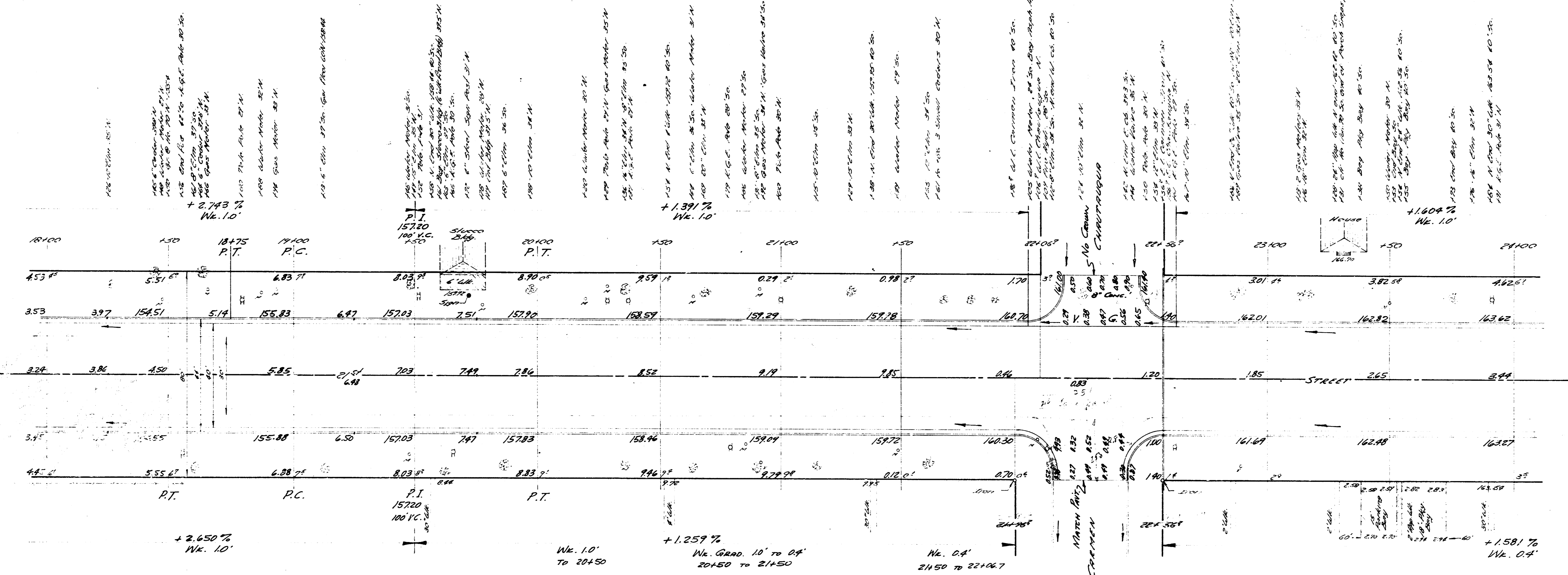
**TIES TO IRON**  
 & VOLUTZIA 01'

0.50 50' to ...  
 11.40 ...  
 13.83 ...  
 0.31 50' of true line.

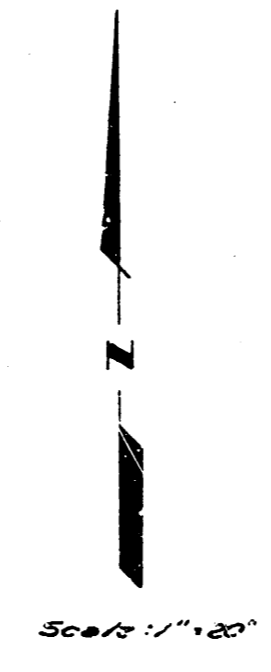
**NOTE:**  
 To Field Engineer & Contractor  
 Entrance pipe to be disposed of  
 in accordance with instruction  
 of local authority.  
 Base line of Survey is surface line.

21'  
 C.C. ...  
 1971 Nov. 12, 1971  
 Sheet 4 of 12

E.N. 1551' 0" in Globe, N and E. of Maplewood S.L. 214  
 S.N. 1000' 0" in Globe, N and E. of Corbin, S.L. 214

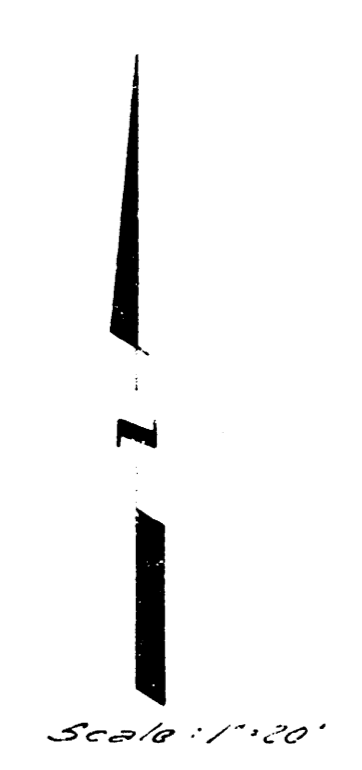
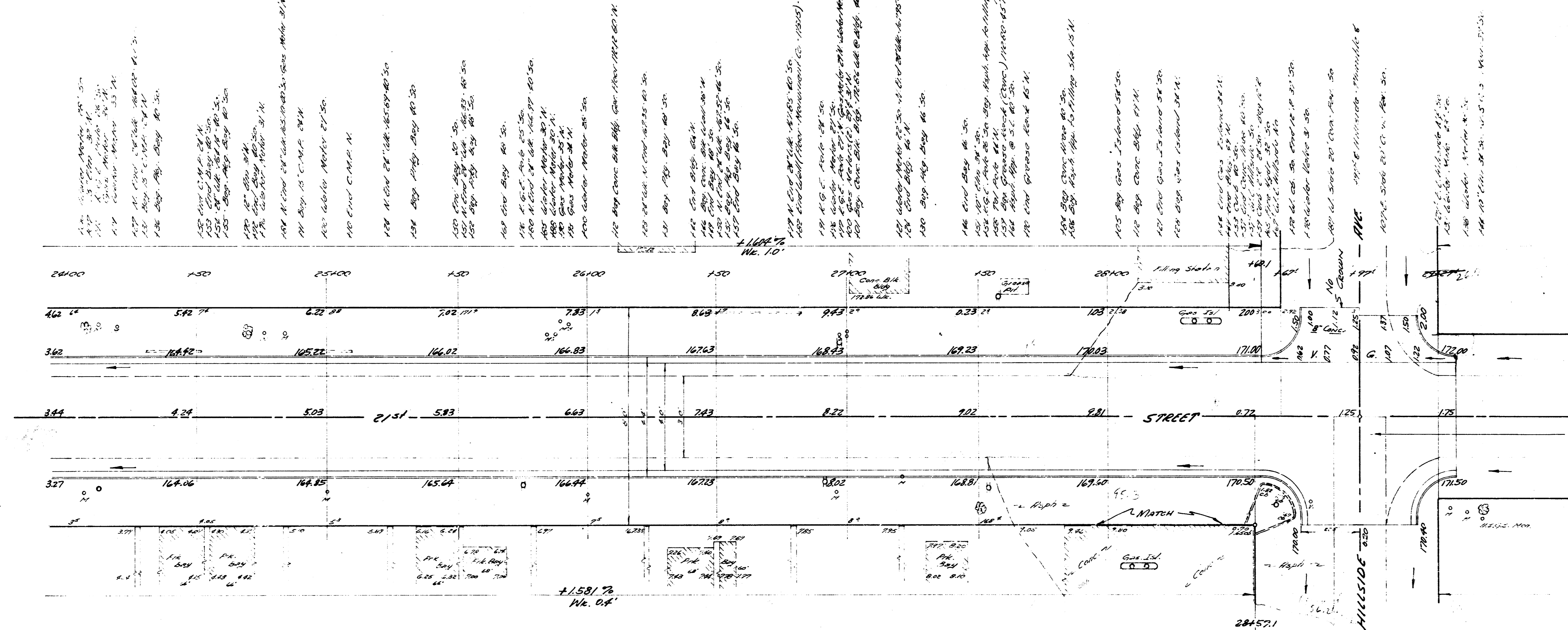


NOTE:  
 To Field Engineer & Contractor  
 1. Entrance Pipe to be disposed  
 of in accordance with instructions  
 of dirt checker.  
 2. Base Line of Survey is Section Line  
 3. All houses 70' x 50' & 214



214  
 E.L. Copepod/ks Pdd. to E.L. Hillside  
 Proj. No. C19-182  
 C19-183  
 Sheet 5 of 12

S.M. 1017 C.S.G.S. No. 1, S.E. CO. Hillside 2nd



NOTE -  
 CURBS DRAWN WITH  
 THIS PROPOSED PAVEMENT  
 CURBS & SIDEWALKS  
 FIELD ENGR. - CHECK

TIES TO THUMBLE  
 & 2nd & Hillside  
 64.80 S.E. to point 3 miles Tol Post  
 1200' Hill to corner of 5th Ave Post  
 58.40 S.W. to N. COV. CONC. BASE CHAS. SARR SIGN  
 57.87 S.E. to pt. of 6585. Meter

NOTE:  
 To Field Engineer & Contractor  
 Entrance Pipe to be disposed of  
 in accordance with instructions  
 of dirt checker.  
 Base line of survey is Section Line.

2/11  
 E.L. Logopedis to C.L. Hillside  
 10-2-84 HC.  
 Proj. No. CH-88  
 CH-103  
 Sheet 6 of 12