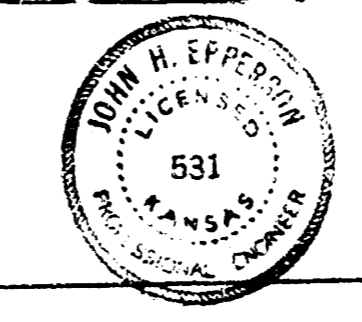
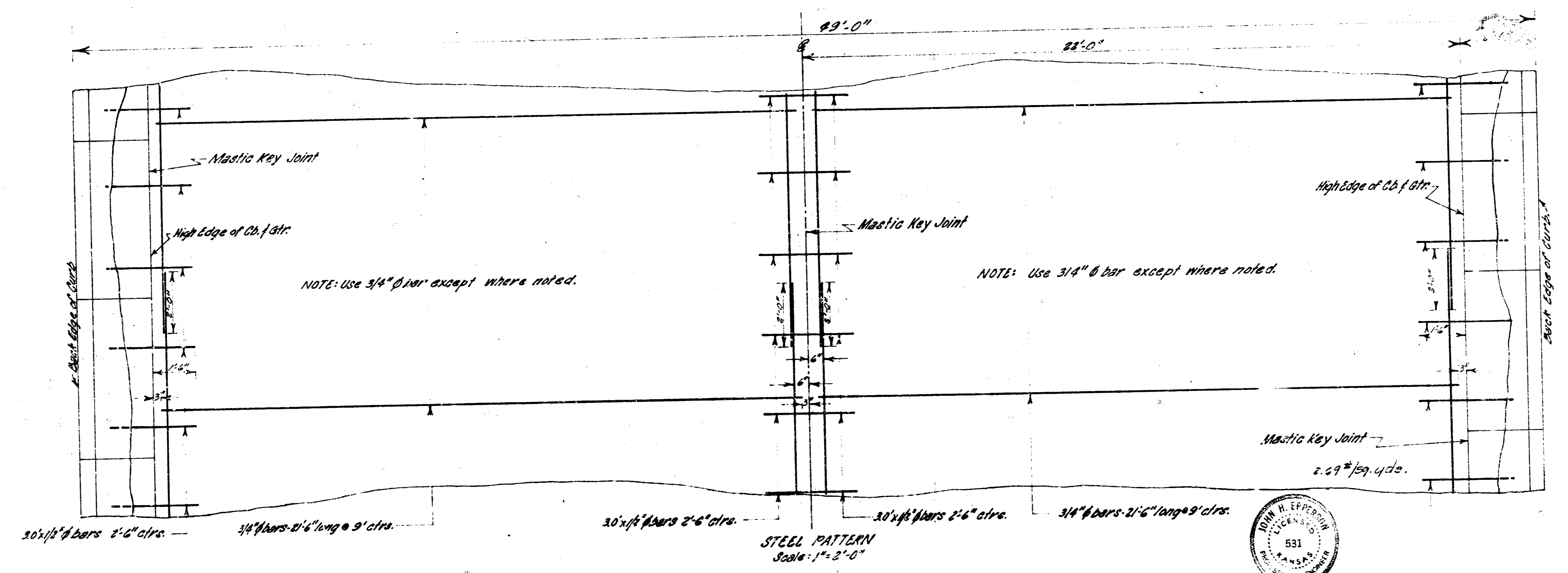
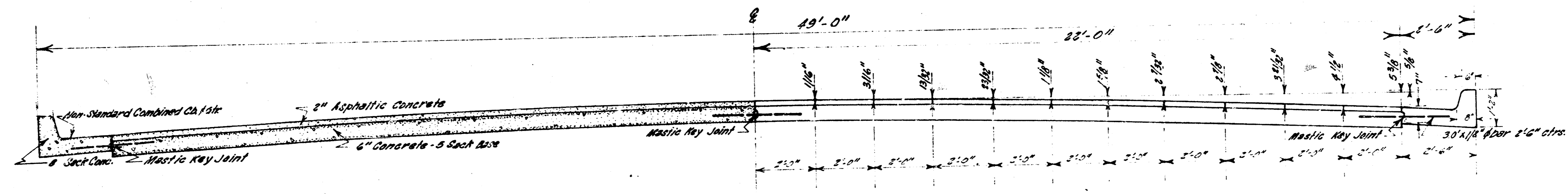
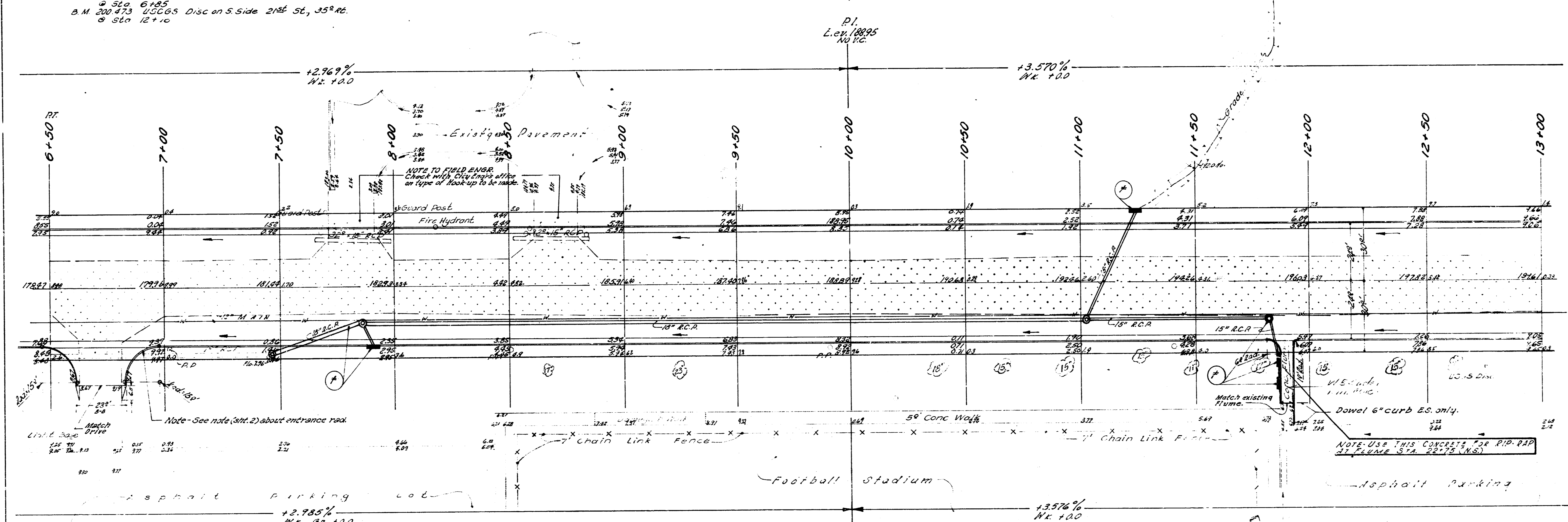


TWENTY-FIRST STREET
 EL. HILLSIDE TO WL. OLIVER STREET
 PROJECT NO. C10-64

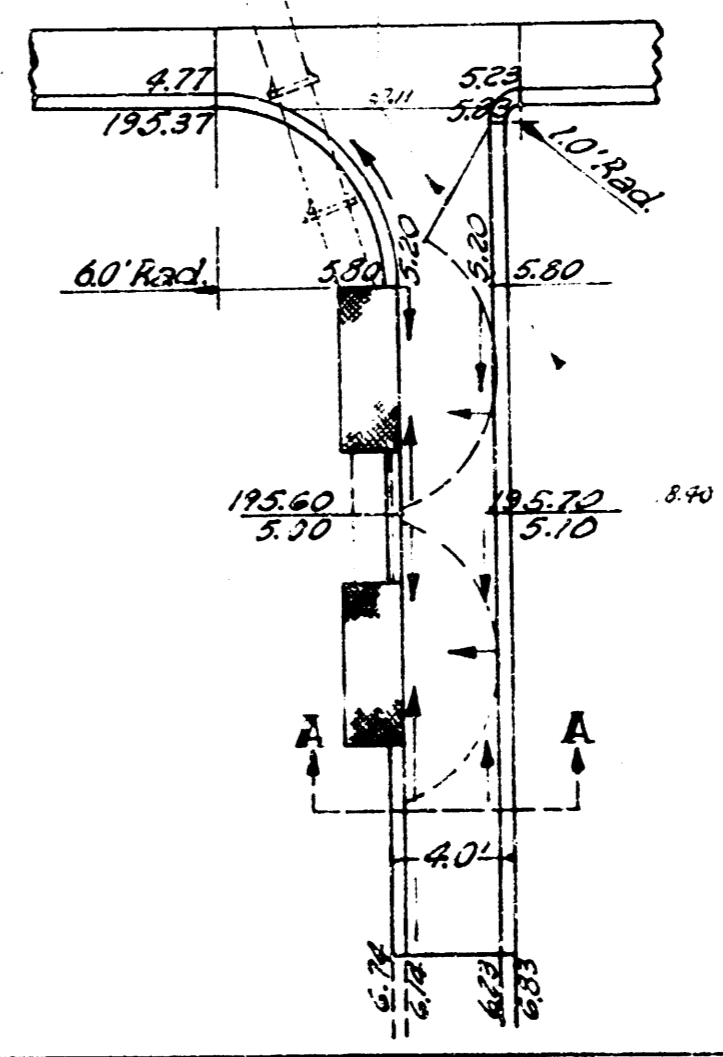
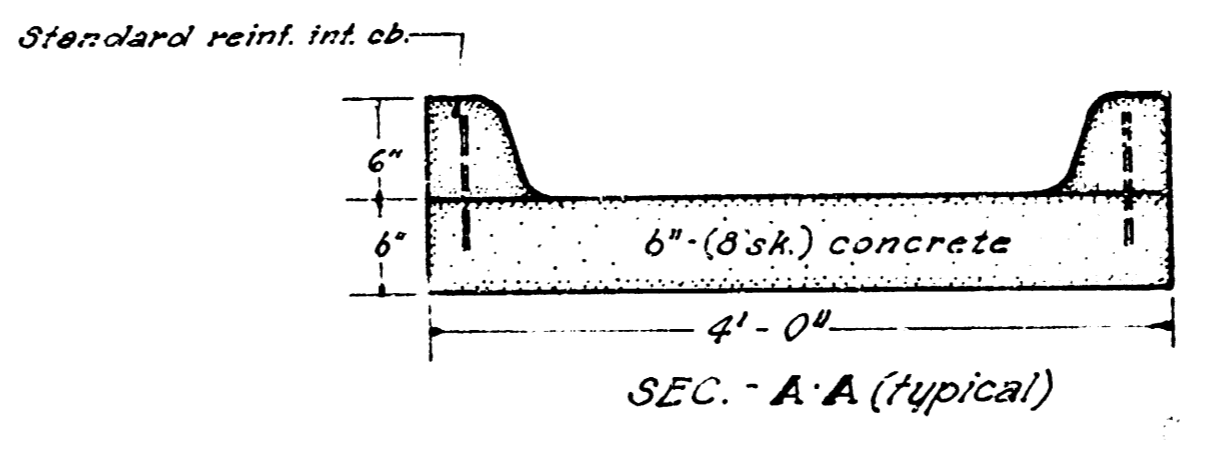


B.M. 100.376 10' cut Top Curb to High Rise Univ. Parking
 Lot E Side of Drive on South Side of 21st St.
 S.L. 6185
 B.M. 200.473 U.S.G.S. Disc on S. side 21st St., 35th Ab.
 Sta. 12+00



P.I.
 Elev. 188.95
 No. 100

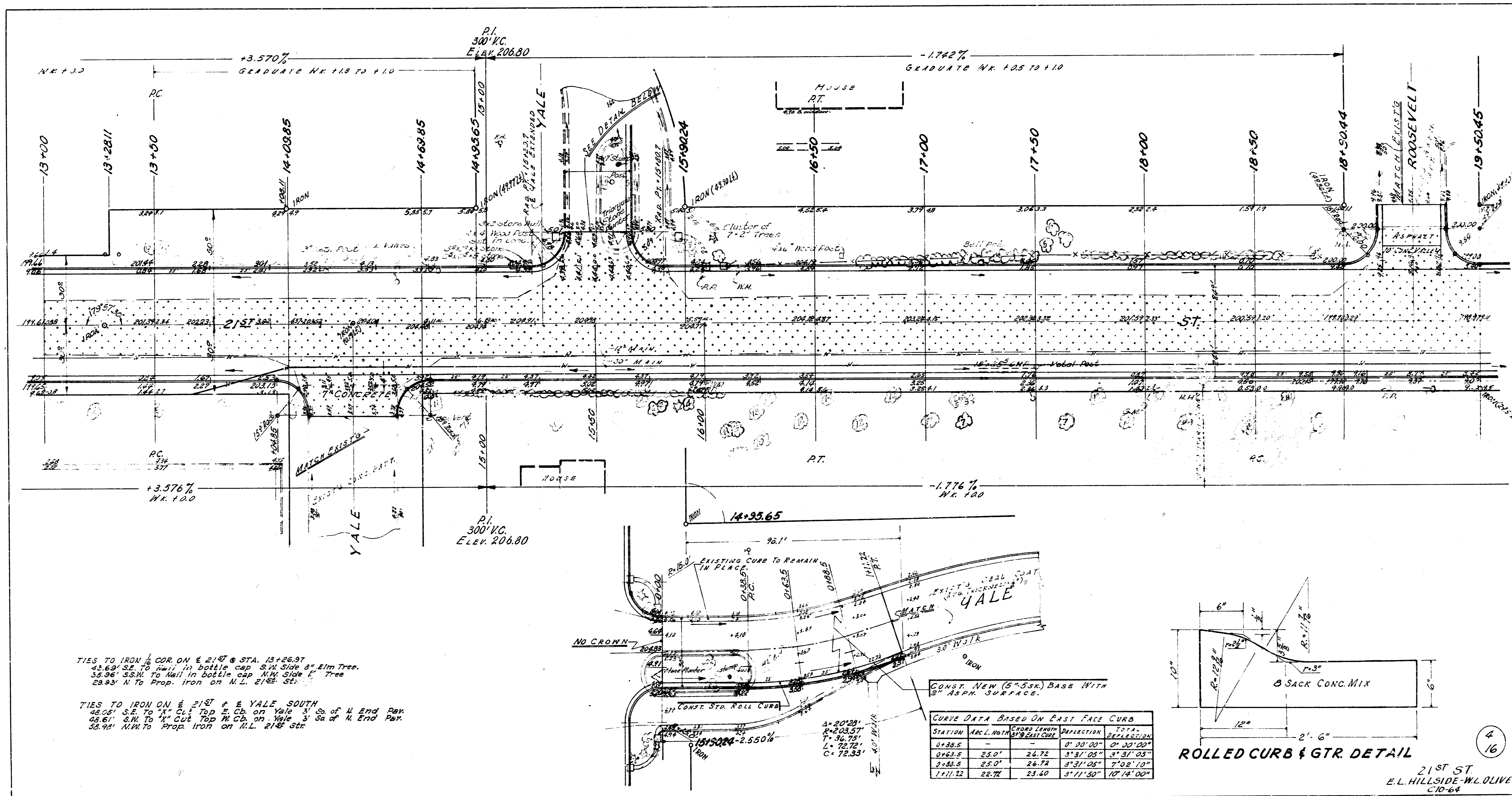
P.I.
 Elev. 188.92
 No. 100



See Spec. 210.04 for details and quantities of utility structures.

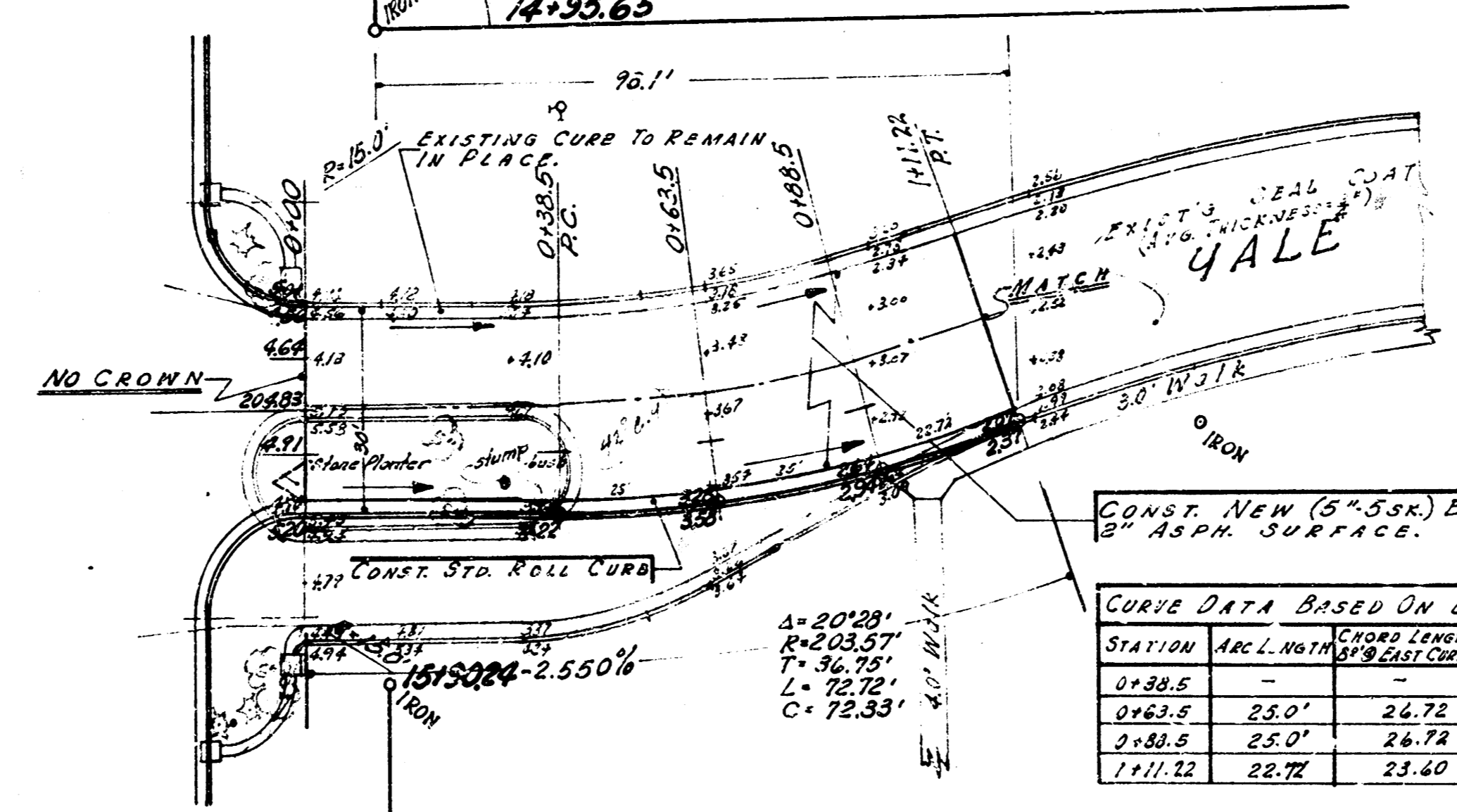
21ST ST.
 E. L. HILLSIDE - W. L. OLIVER
 CID-64

3/10



TIES TO IRON COR. ON E 21ST @ STA. 13+26.97
 43.62' SE TO nail in bottle cap S.W. Side of Elm Tree.
 36.96' S.W. TO nail in bottle cap N.W. Side of Tree
 29.93' N. To Prop. Iron on N.W. 21ST St.

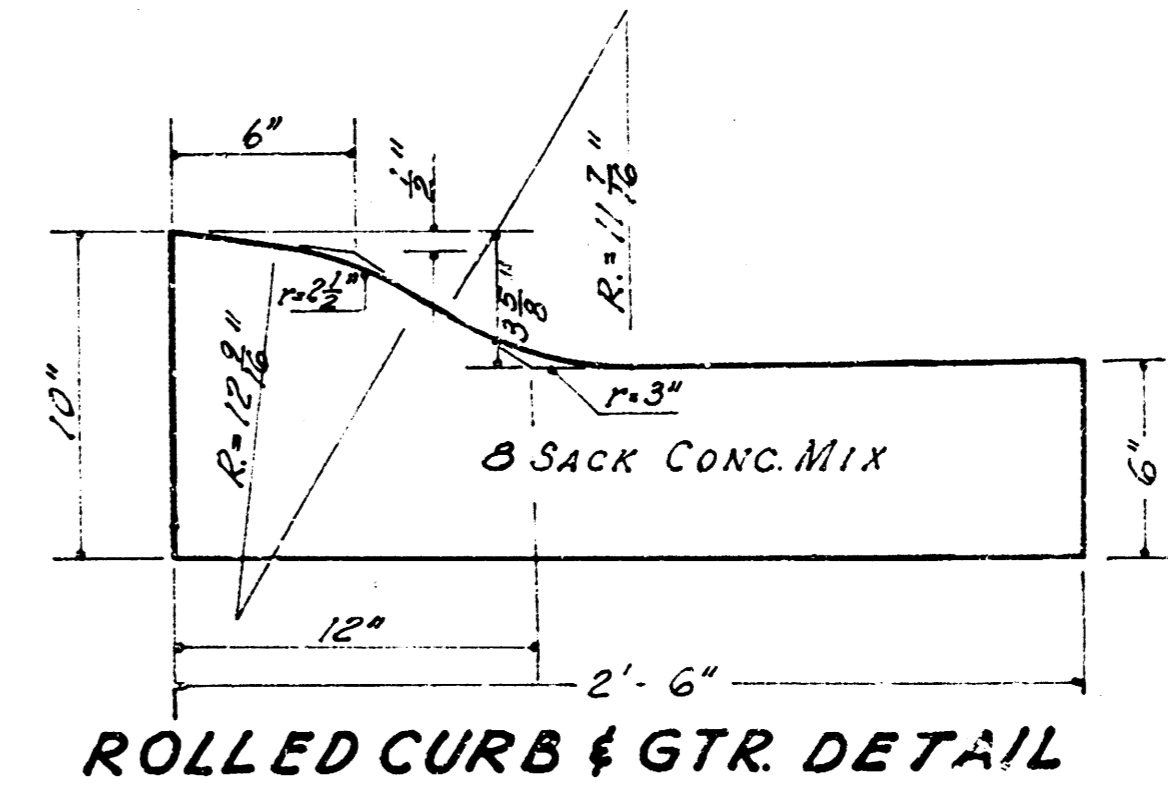
TIES TO IRON ON E 21ST & E YALE SOUTH
 46.05' S.E. TO "X" CL. Top of Cb. on Yale S. of N. End Pav.
 48.61' S.W. TO "X" CL. Top of Cb. on Yale S. of N. End Pav.
 38.95' N.W. TO Prop. IRON on N.W. 21ST St.



CONST. NEW (6" Sx6") BASE WITH
 2" ASPH. SURFACE.

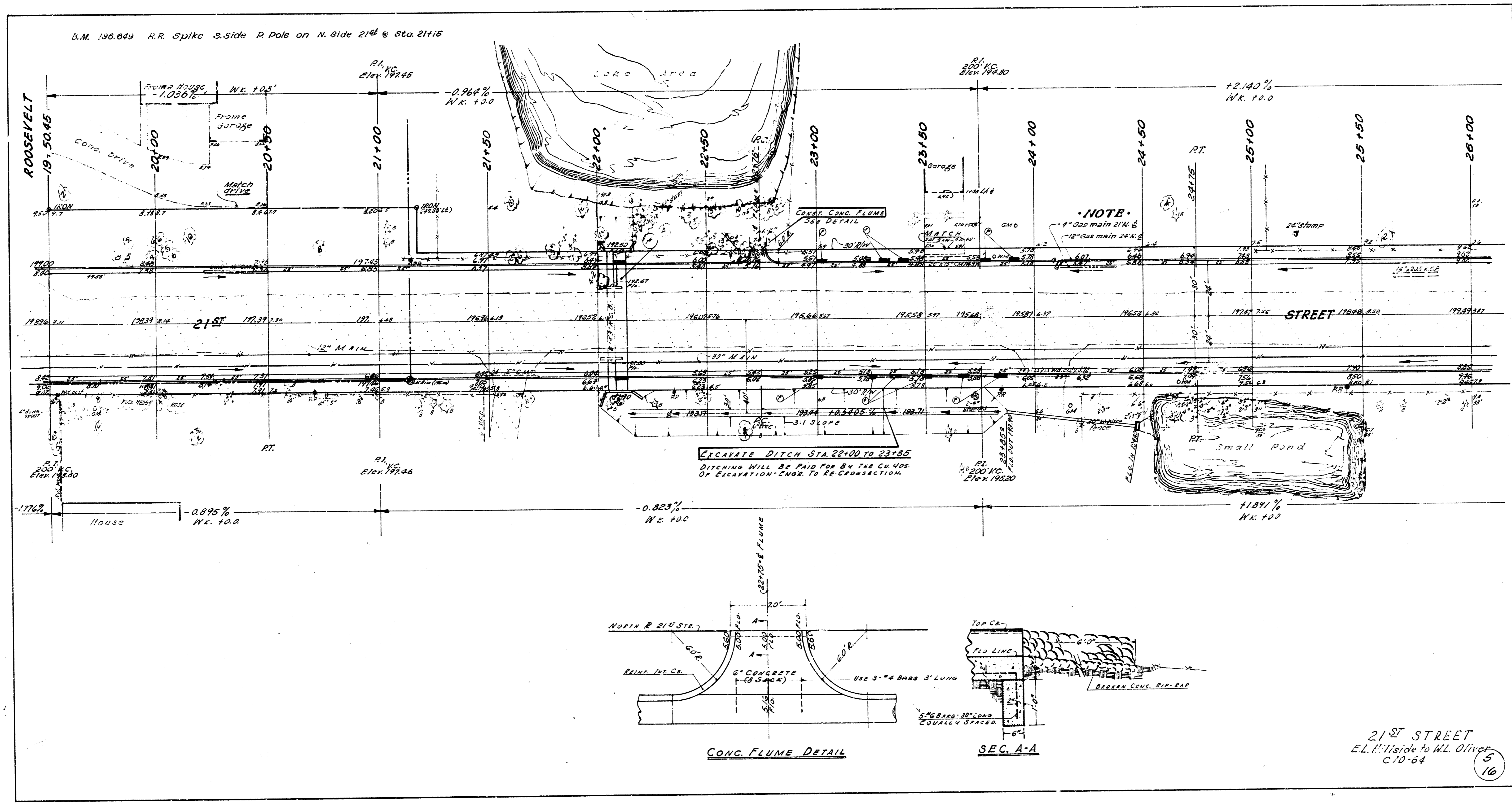
CURB DATA BASED ON EAST FACE CURB

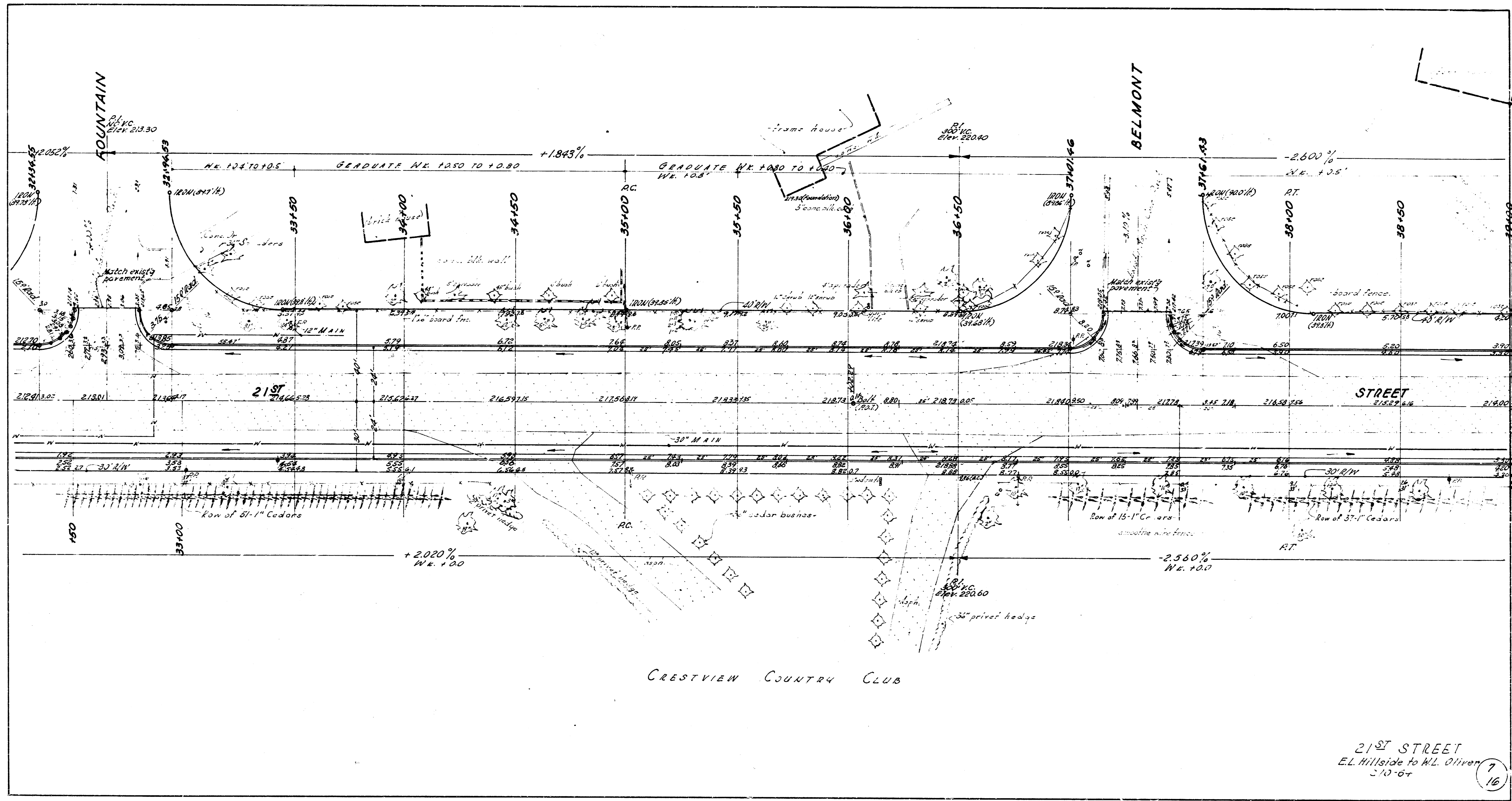
STATION	INCL. WITH 1/8" SLOPE	CROSS LENGTH	DIRECTION	TOTAL
13+26.97	24.72	0' 00" 00"	0' 00" 00"	24.72
13+30.5	25.0'	24.72	3' 31" 05"	0' 00" 00"
13+35.5	25.0'	24.72	3' 31" 05"	3' 31" 05"
13+40.5	25.0'	24.72	3' 31" 05"	7' 02" 10"
13+45.5	22.72	23.40	3' 11" 50"	10' 14" 00"



ROLLED CURB & GTR. DETAIL

21ST ST
 E.L. HILLSIDE-W.L. OLIVER
 C10-64

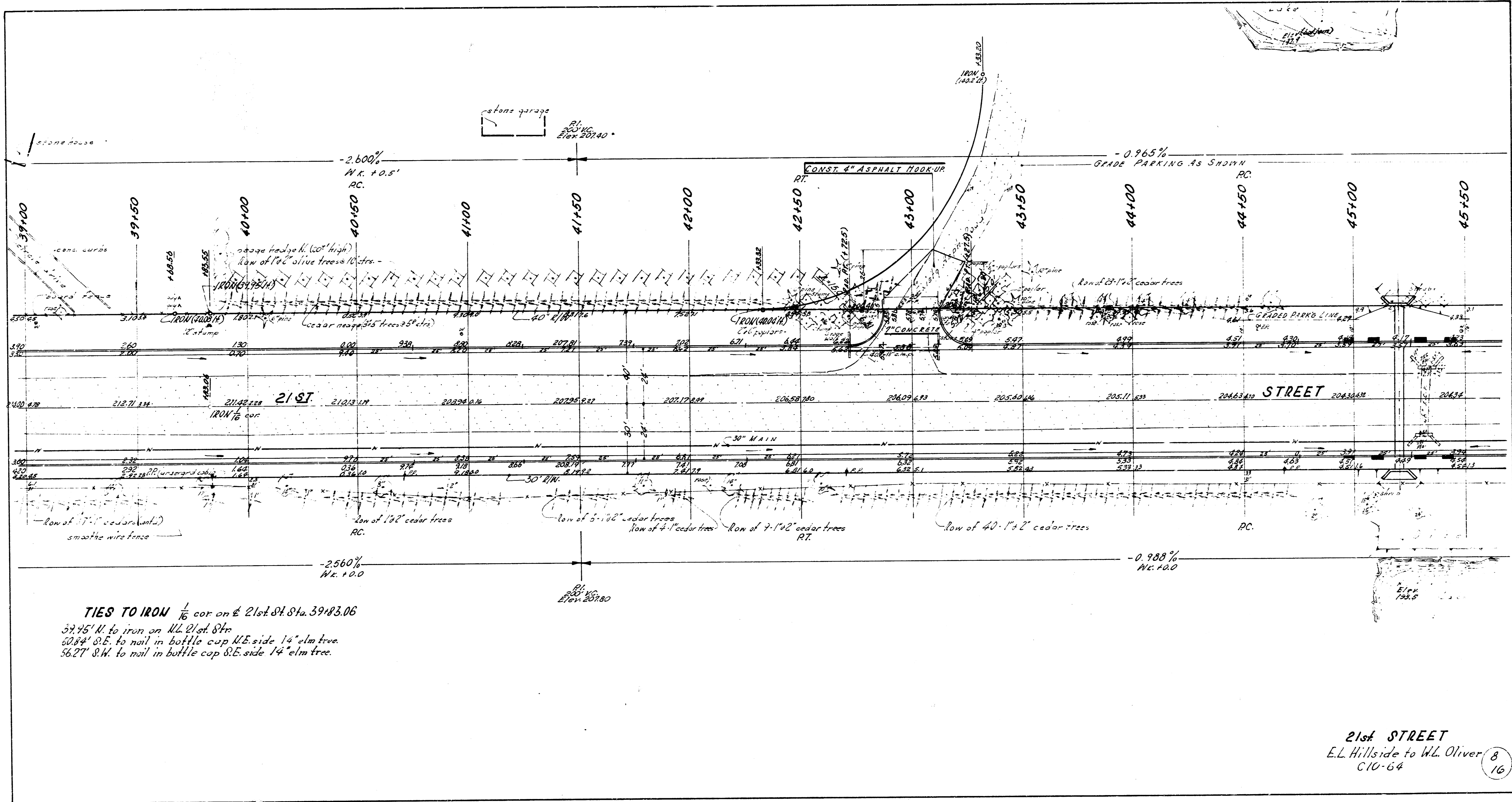




CRESTVIEW COUNTRY CLUB

21ST STREET
 EL. Hillside to H.L. Oliver
 210-64

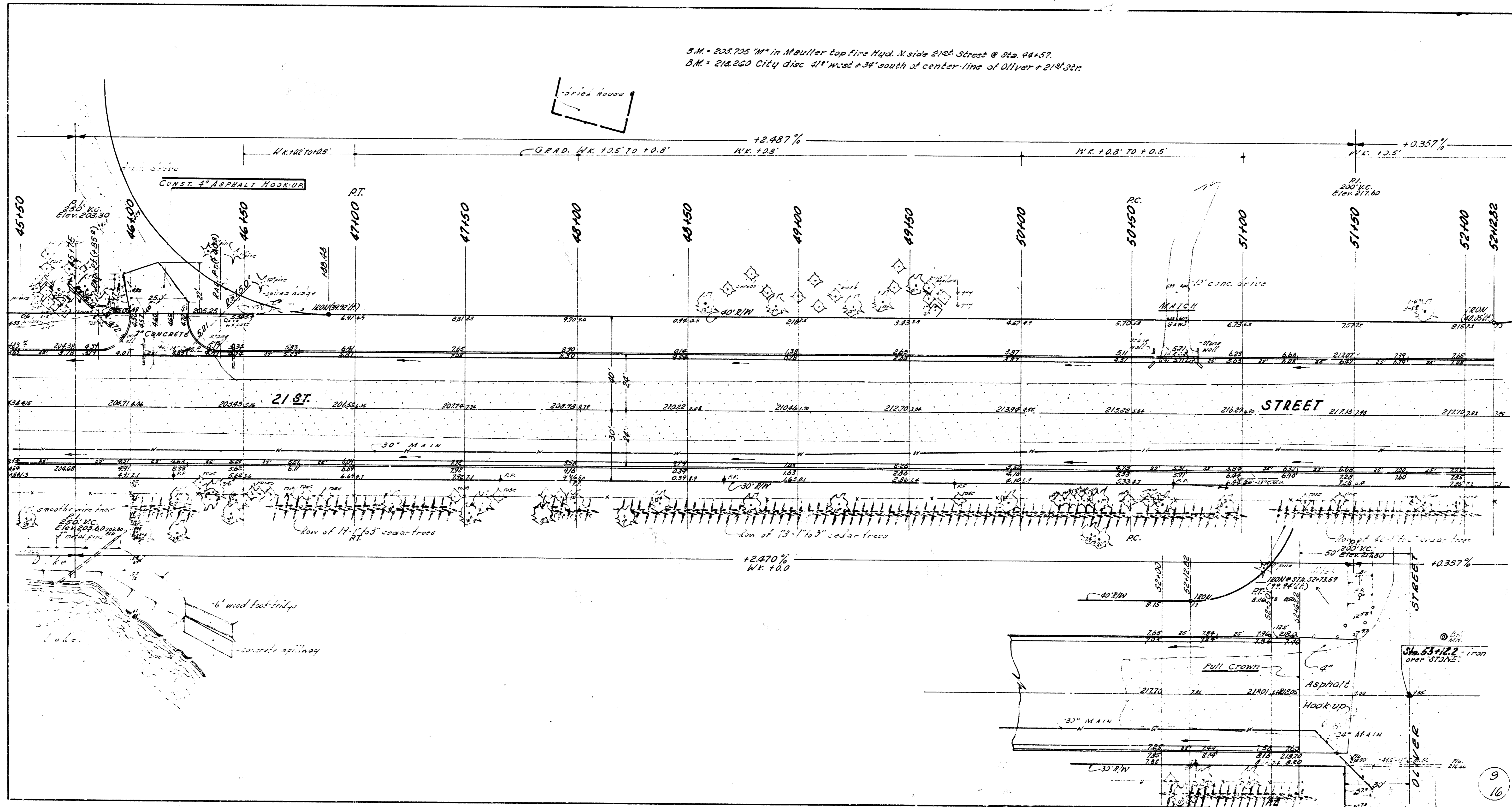
7
 16

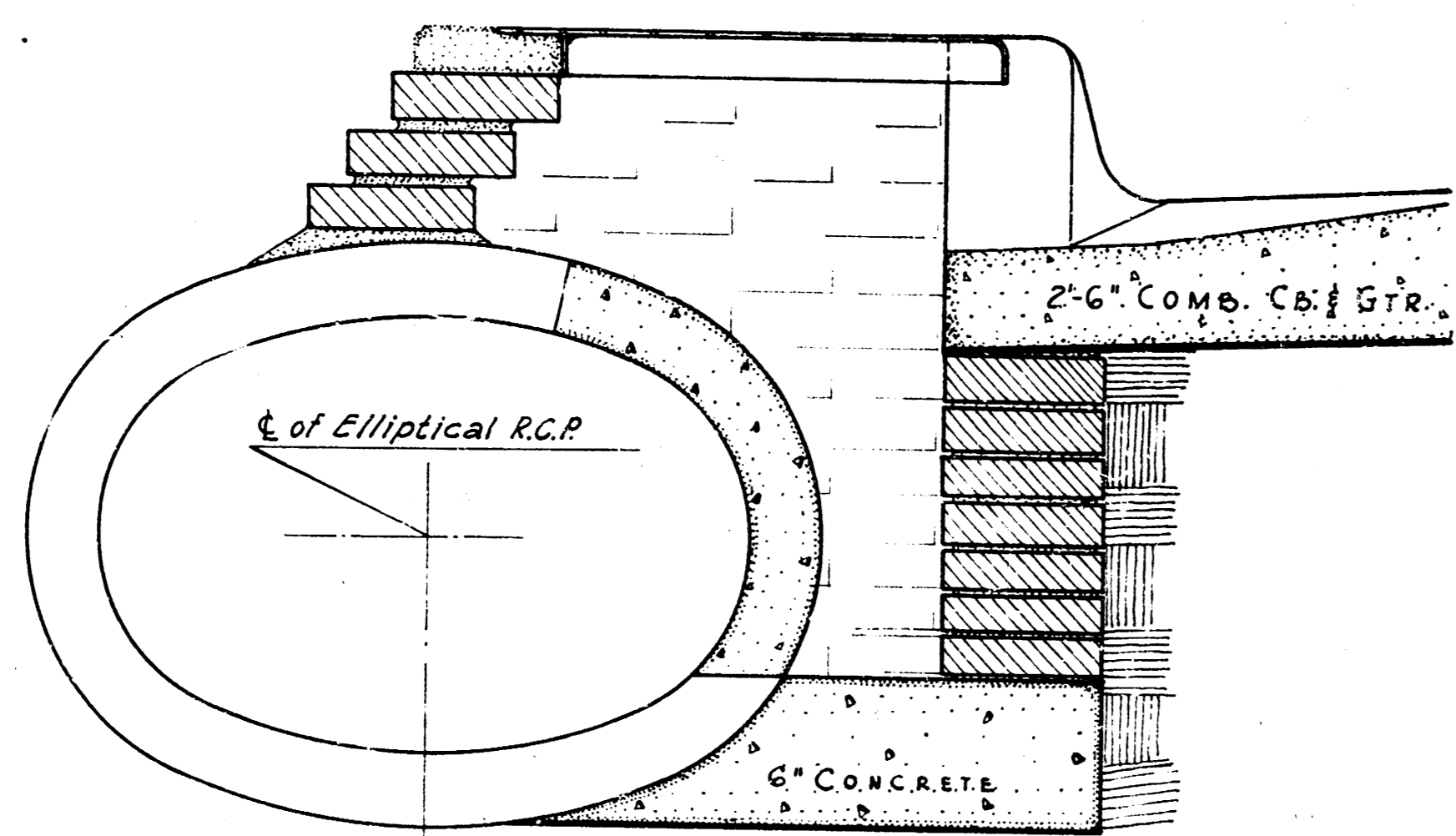


TIES TO IRON $\frac{1}{16}$ cor on $\frac{1}{16}$ 21st St Sta. 39+83.06
 57.45' N. to iron on N.E. 21st St
 50.84' S.E. to nail in bottle cap N.E. side 14' elm tree
 56.27' S.W. to nail in bottle cap S.E. side 14' elm tree.

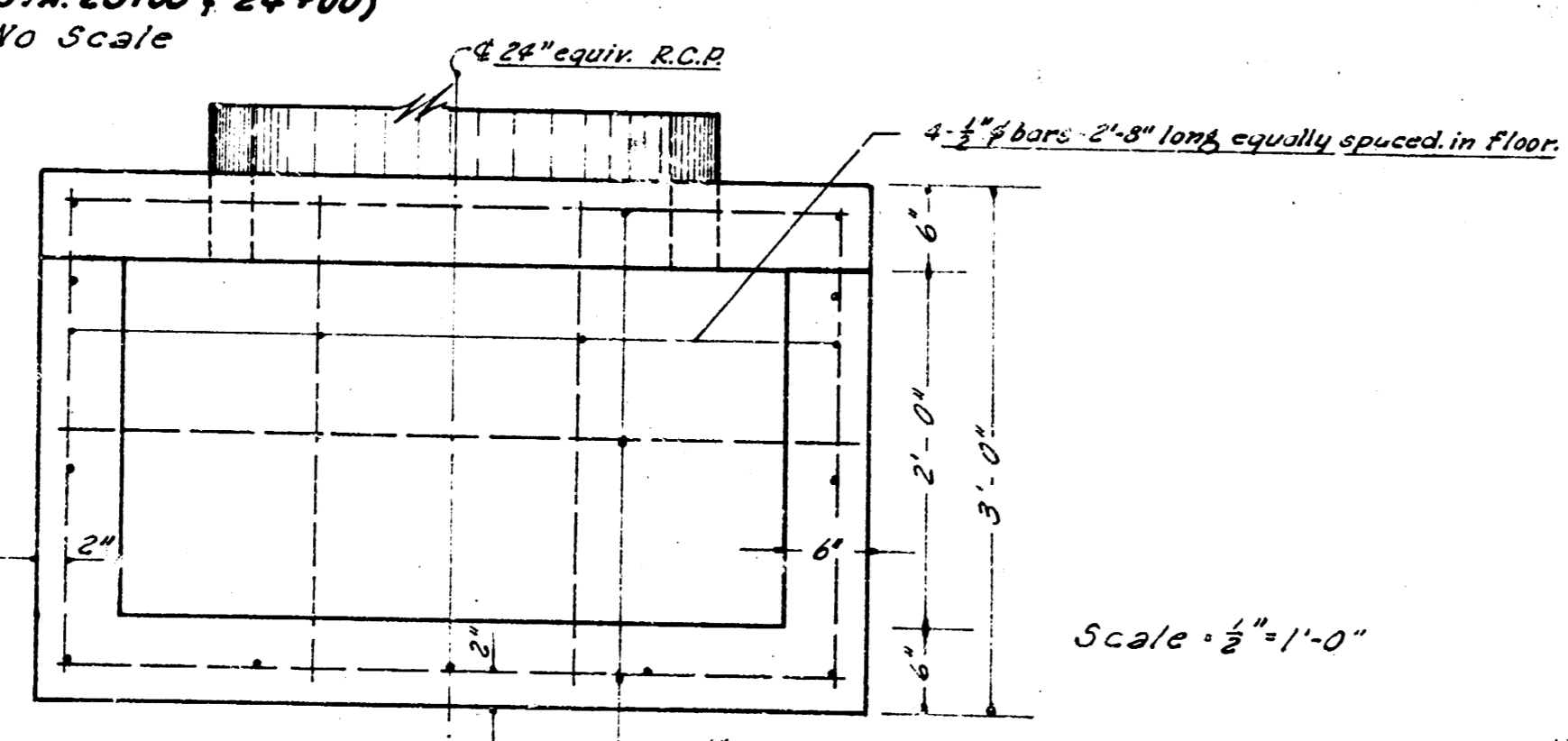
21st STREET
 E.L. Hillside to W.L. Oliver 8
 C10-54 16

B.M. = 226.725 "W" in Mauller top Fire Hydr. N. side 21st Street @ Sta. 46+57.
B.M. = 218.240 City disc 41" wood + 34" south of center line of Oliver + 21st St.

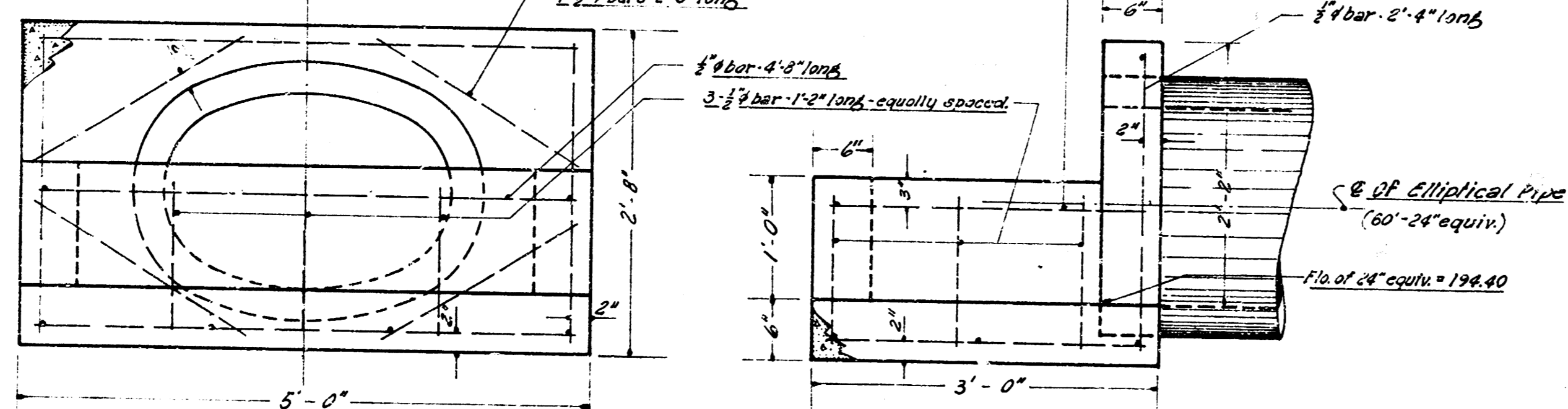




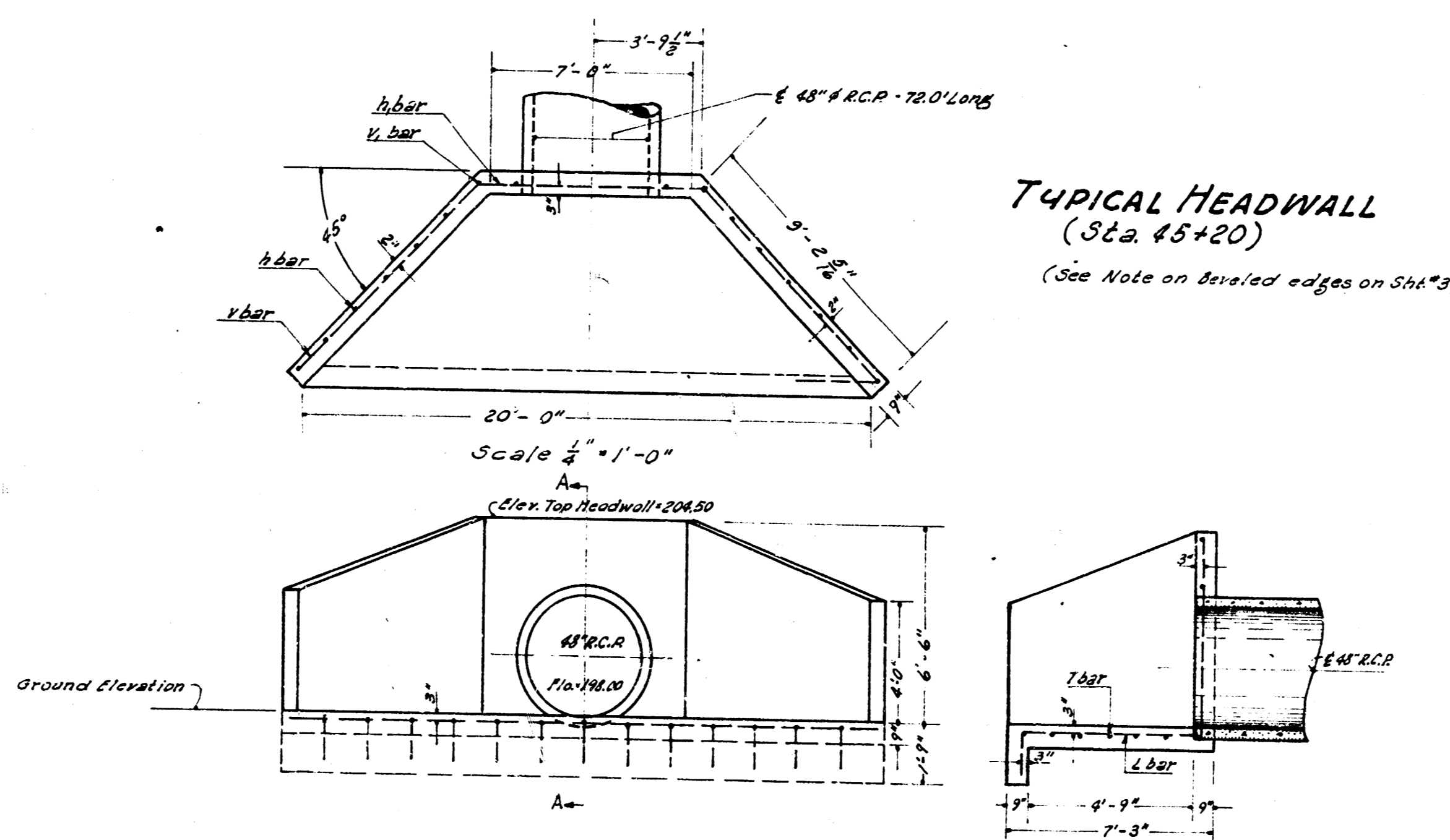
DETAIL OF CATCHBASIN
(Box Sta. 23+00 (24+00))
No Scale



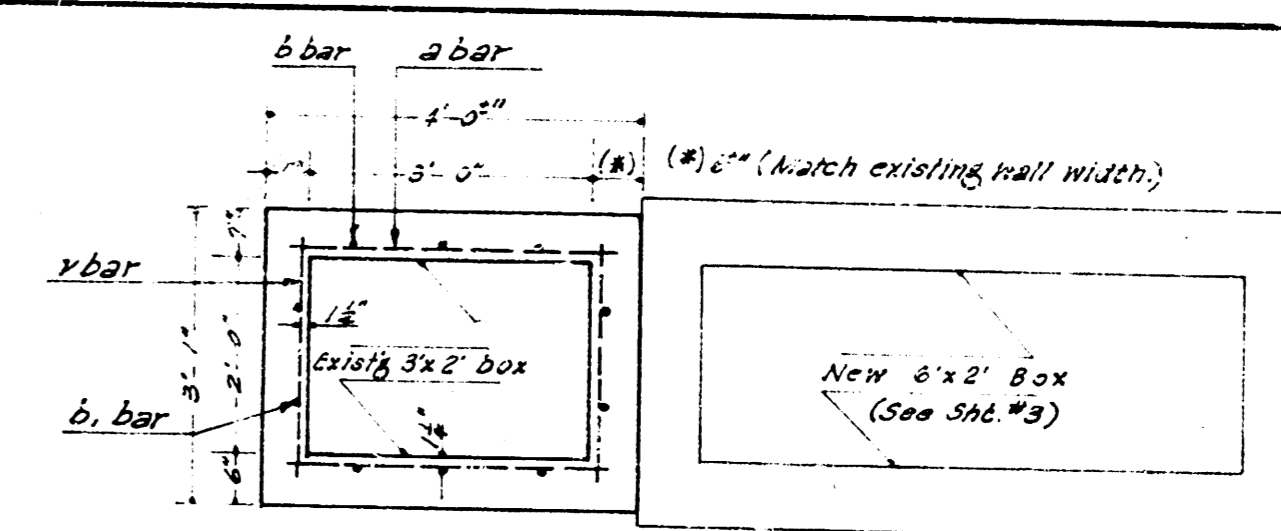
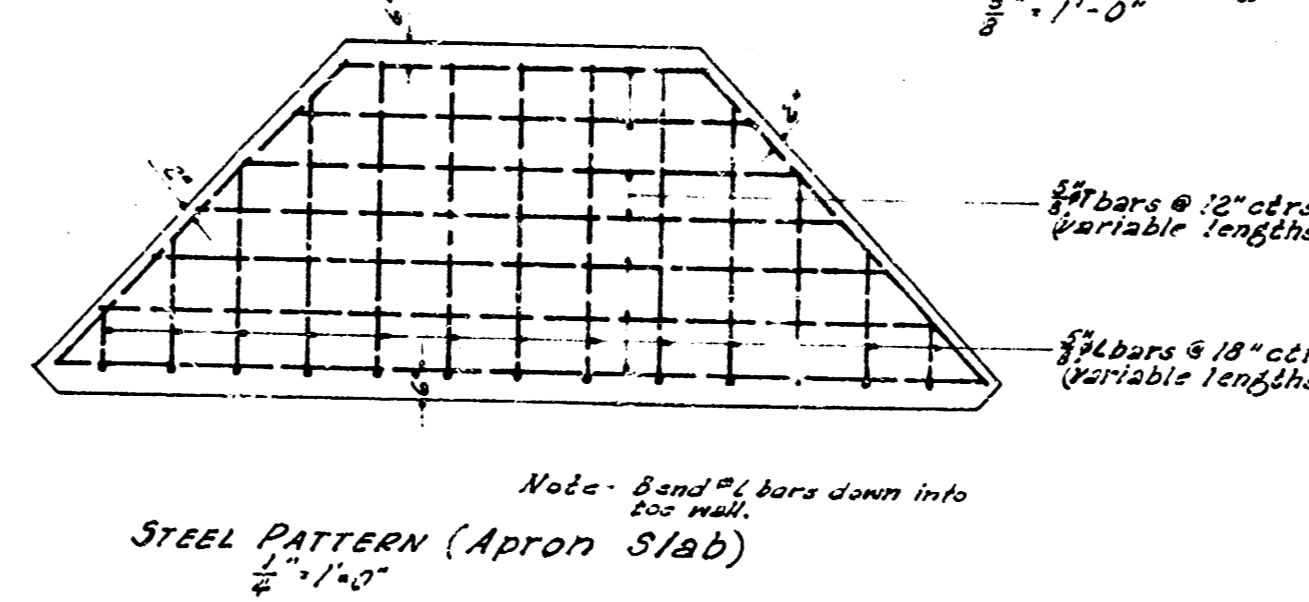
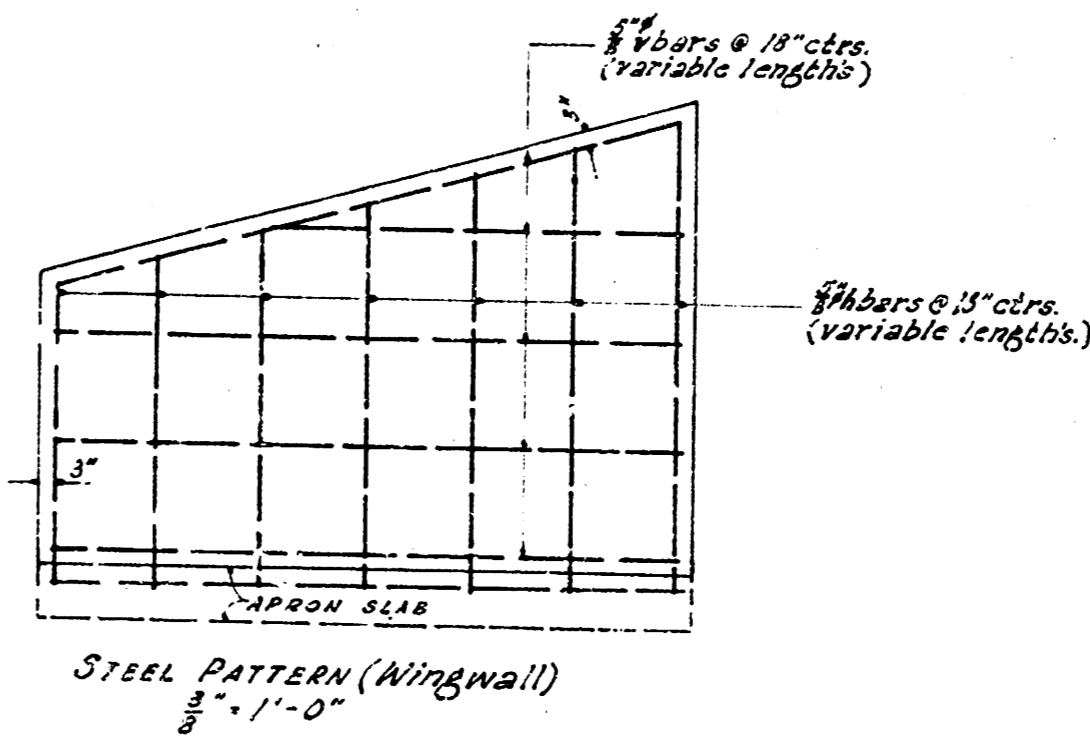
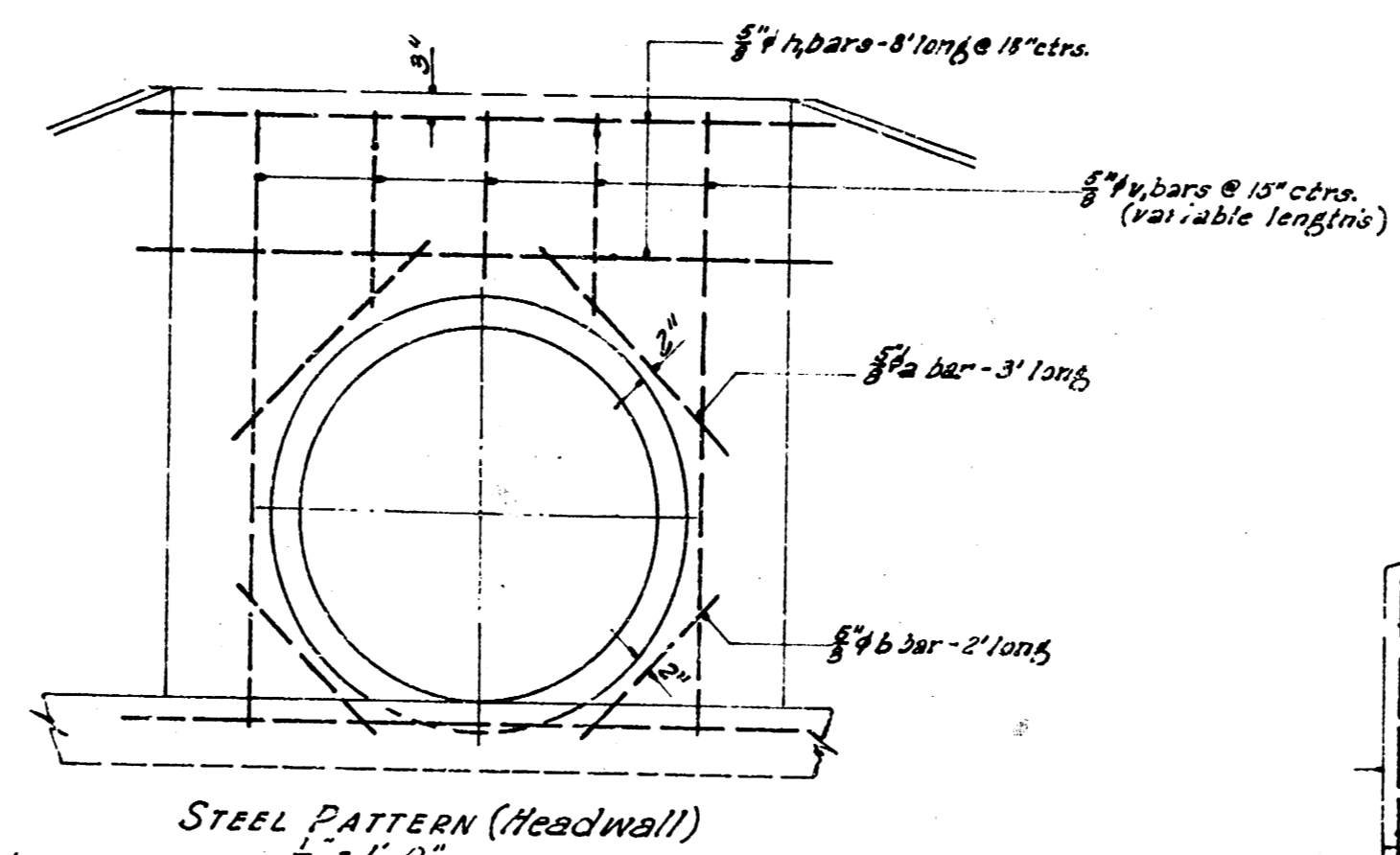
SUMMARY
Steel = 42 #
Concrete = 0.7 cu yd (Class A-4E)
See note on beveled edges on sheet #3



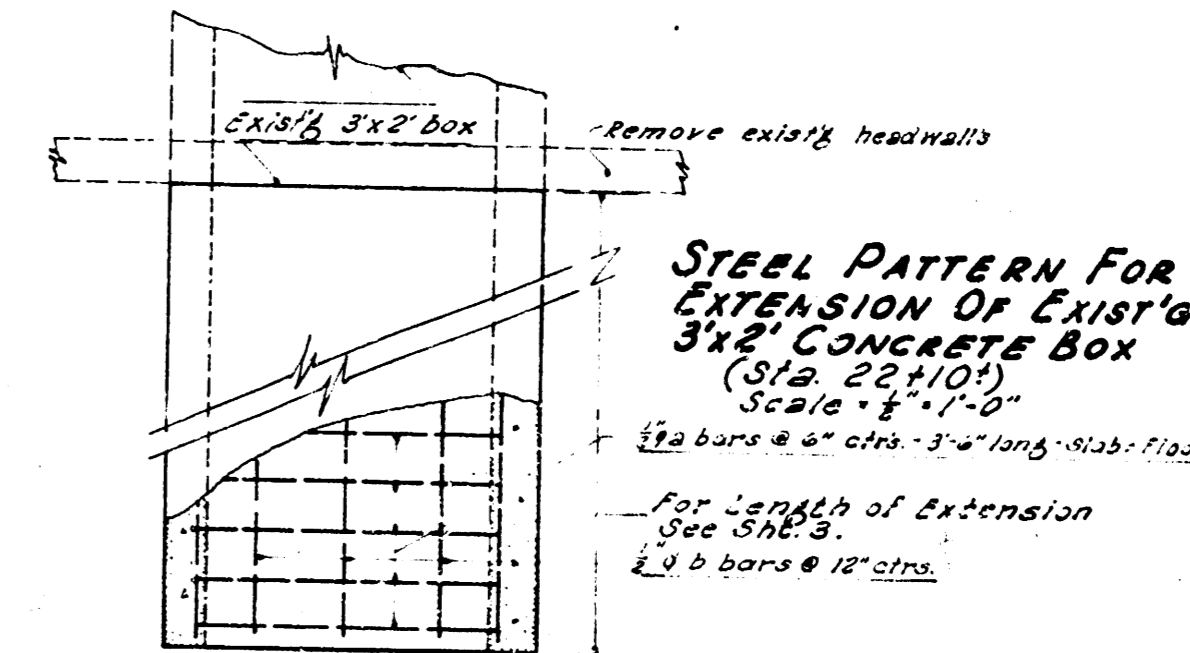
DETAIL OF INLET STRUCTURE
(Sta. 24+45 So. of S.R. 21/8)



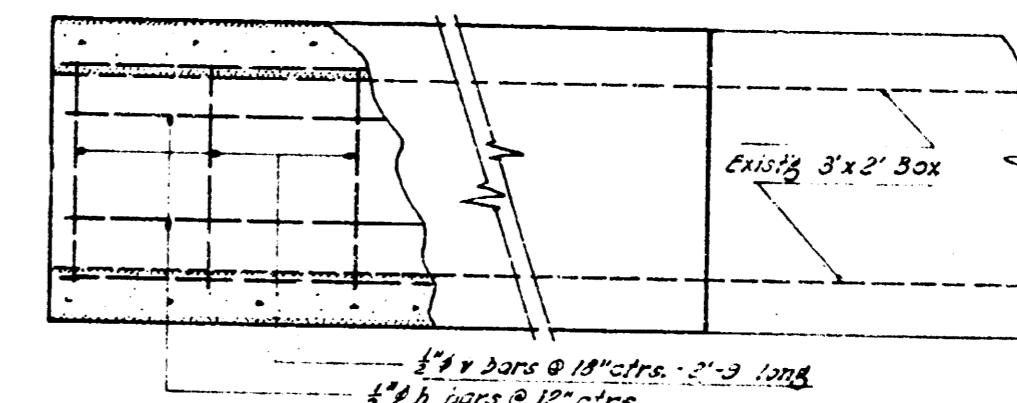
TYPICAL HEADWALL
(Sta. 45+20)
(See Note on Beveled edges on Sheet #3)



TYPICAL SECTION



PLAN VIEW



SUMMARY

(3x3 Box Ext.)

bar	size	length	no.
a	#4	3'-0"	20
b	#4	2'-0"	4
b1	#4	1'-0"	1
c	#4	2'-0"	4
d	#4	2'-0"	4
e	#4	2'-0"	4
f	#4	2'-0"	4
g	#4	2'-0"	4
h	#4	2'-0"	4
i	#4	2'-0"	4
j	#4	2'-0"	4
k	#4	2'-0"	4
l	#4	2'-0"	4
m	#4	2'-0"	4
n	#4	2'-0"	4
o	#4	2'-0"	4
p	#4	2'-0"	4
q	#4	2'-0"	4
r	#4	2'-0"	4
s	#4	2'-0"	4
t	#4	2'-0"	4
u	#4	2'-0"	4
v	#4	2'-0"	4
w	#4	2'-0"	4
x	#4	2'-0"	4
y	#4	2'-0"	4
z	#4	2'-0"	4

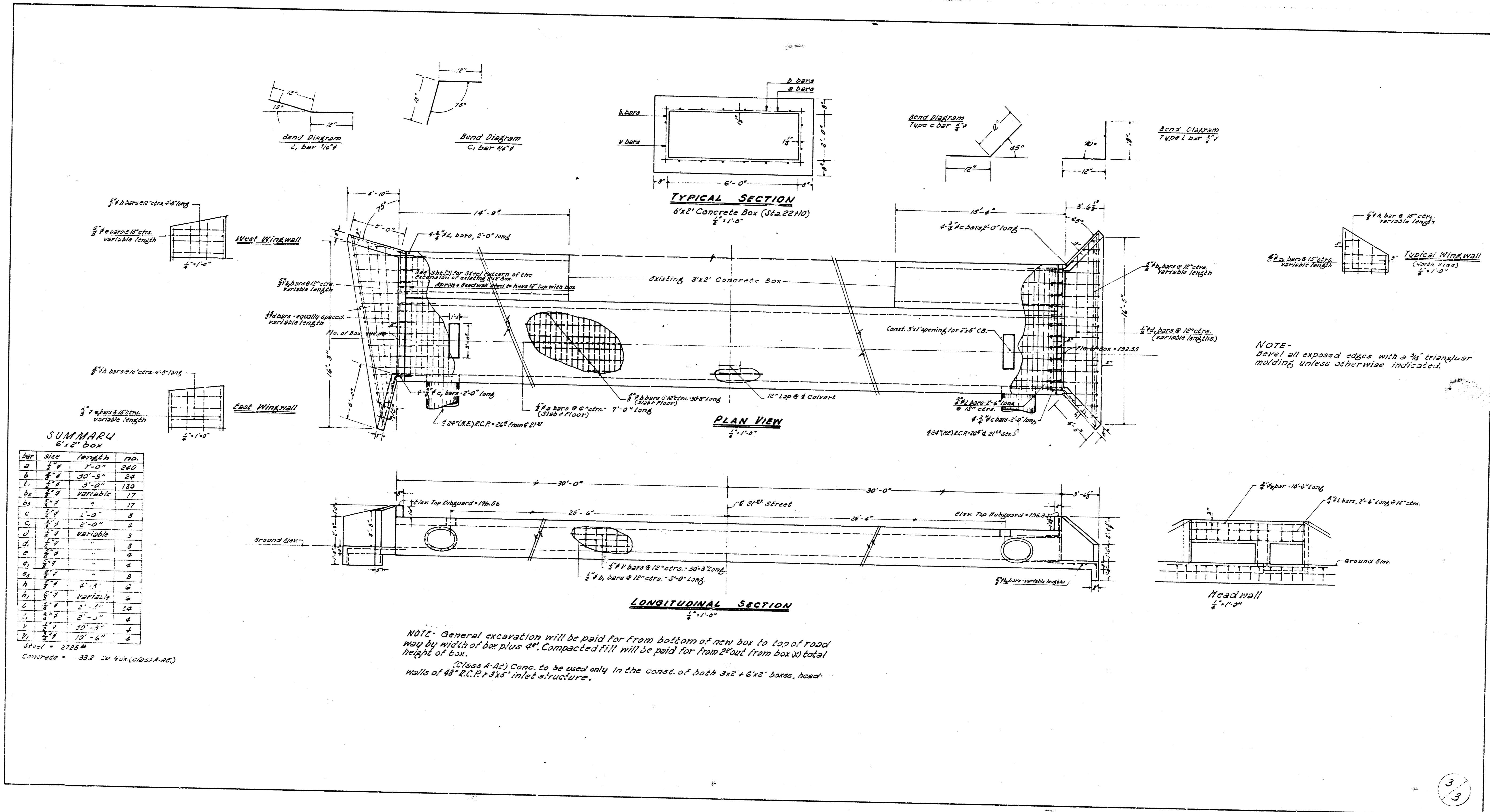
Steel = 153 #
Concrete = 7.0 cu yds. (Class A-4E)

SUMMARY

(Headwalls for 48" R.C.P.)

bar	size	length	no.
a	#4	8'-0"	4
b	#4	2'-0"	4
c	#4	variable	28
d	#4	8'-0"	4
e	#4	variable	26
f	#4	18'-0"	4
g	#4	20'	4
h	#4	10'	4
i	#4	10'	4
j	#4	10'	4
k	#4	10'	4
l	#4	10'	4
m	#4	10'	4
n	#4	10'	4
o	#4	10'	4
p	#4	10'	4
q	#4	10'	4
r	#4	10'	4
s	#4	10'	4
t	#4	10'	4
u	#4	10'	4
v	#4	10'	4
w	#4	10'	4
x	#4	10'	4
y	#4	10'	4
z	#4	10'	4

Steel = 800 #
Concrete = 14.17 cu yds. (Class A-4E)



SUMMARY
6x2' box

Bar	Size	Length	No.
a	1/2"	7'-0"	240
b	3/4"	30'-5"	28
c	1/2"	3'-0"	120
d	3/4"	Variable	17
e	1/2"	-	17
f	1/2"	1'-0"	8
g	1/2"	2'-0"	2
h	1/2"	Variable	3
i	1/2"	-	3
j	1/2"	-	4
k	1/2"	-	4
l	1/2"	-	8
m	1/2"	4'-3"	2
n	1/2"	Variable	2
o	1/2"	2'-0"	24
p	1/2"	2'-0"	4
q	1/2"	30'-3"	2
r	1/2"	12'-5"	2

Steel = 2725#
Concrete = 33.2 cu yds. (Class A-2)

NOTE: General excavation will be paid for from bottom of new box to top of road way by width of box plus 4". Compacted fill will be paid for from 2' out from box w/ total height of box.
(Class A-2) Conc. to be used only in the const. of both 3x2' & 6x2' boxes, headwalls of 48" R.C.P. & 3x5' inlet structure.