

MEDIAL BREAK ON 21ST STREET NORTH

BETWEEN MARIGOLD AND SWEETBRIAR
TO SERVE BRAUM'S ICE CREAM STORE

PROJECT NO.
472-76-245-80001-000-000-019

NOTE TO CONTRACTOR

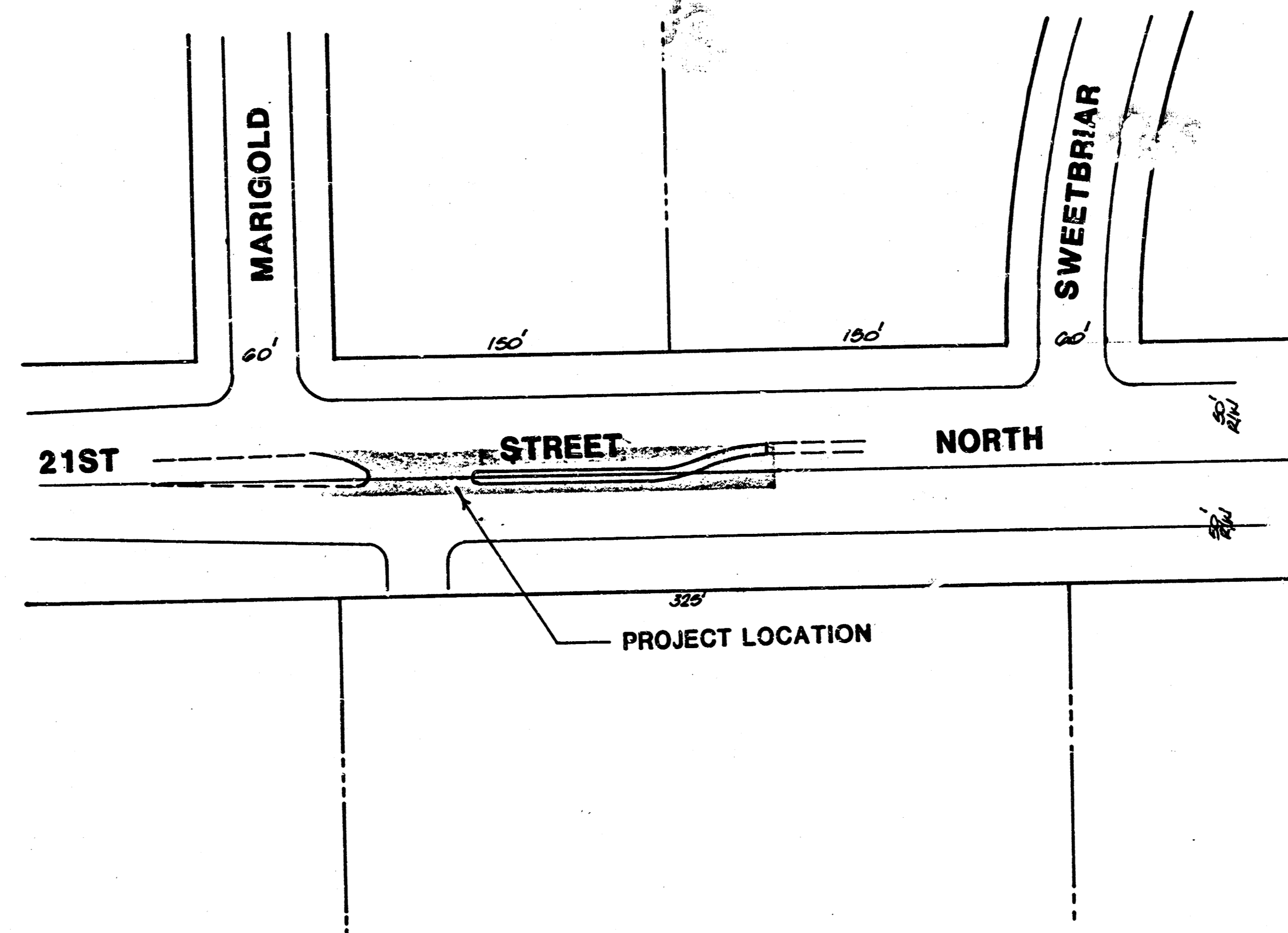
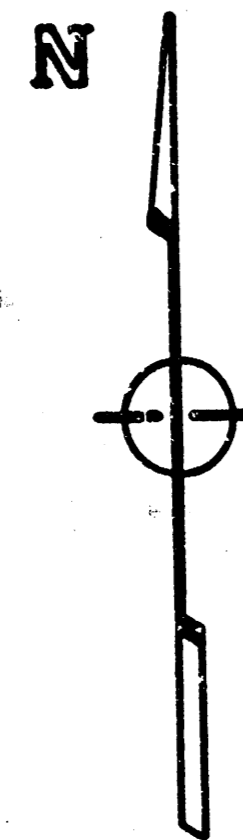
This project will be constructed under the supervision of the CITY ENGINEER and conforming to the SPECIFICATIONS of the CITY OF WICHITA. The CONTRACTOR will pay the City of Wichita for all costs of plan review, inspection and booking per contract.

APPROVED AS SHOWN
By CITY ENGINEER OF WICHITA

Sanitary Sewers _____
Storm Sewers _____
Driveway Approaches _____
Water Mains _____
Paving CIA 7-10-86

GENERAL NOTES

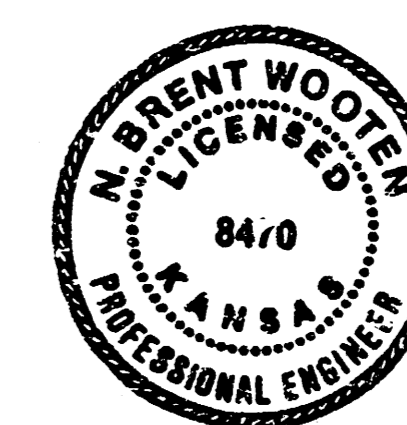
- 1) CONTRACTOR TO ADEQUATELY SIGN AND BARRICADE THE PROJECT AREA THROUGHOUT THE COURSE OF CONSTRUCTION. CONTRACTOR TO MAINTAIN AT LEAST ONE OPEN LANE OF TRAFFIC IN EACH DIRECTION ON 21ST STREET AT ALL TIMES DURING CONSTRUCTION.
- 2) ARRANGEMENTS HAVE BEEN MADE WITH KG & E FOR THE REMOVAL AND REPLACEMENT OF THE LIGHT POLE. HOWEVER, THE CONTRACTOR SHALL BE RESPONSIBLE FOR THE FULL PAYMENT TO KG & E FOR THE POLE RELOCATION. CONTACT HERLE CATHEY (261-6285) AT KG & E PRIOR TO POLE RELOCATION.
- 3) THE SAW JOINTS ARE TO BE NEAT AND CLEAN REMOVAL LINES IN ORDER TO PROVIDE A CLEAN MATCH BETWEEN THE NEW AND EXISTING PAVEMENT.



CITY OF WICHITA, KS

MICHAEL E. LINDEBAK

CITY ENGINEER



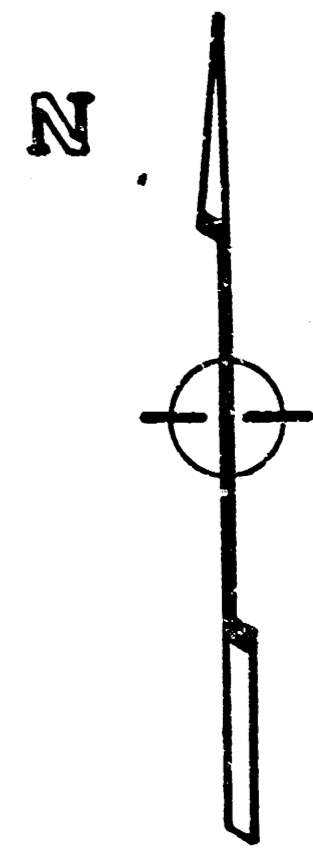
JULY 1986

BAUGHMAN COMPANY, P.A.
SURVEYING & ENGINEERING
311-262-7271 • 330 LAURA • WICHITA, KANSAS 67211

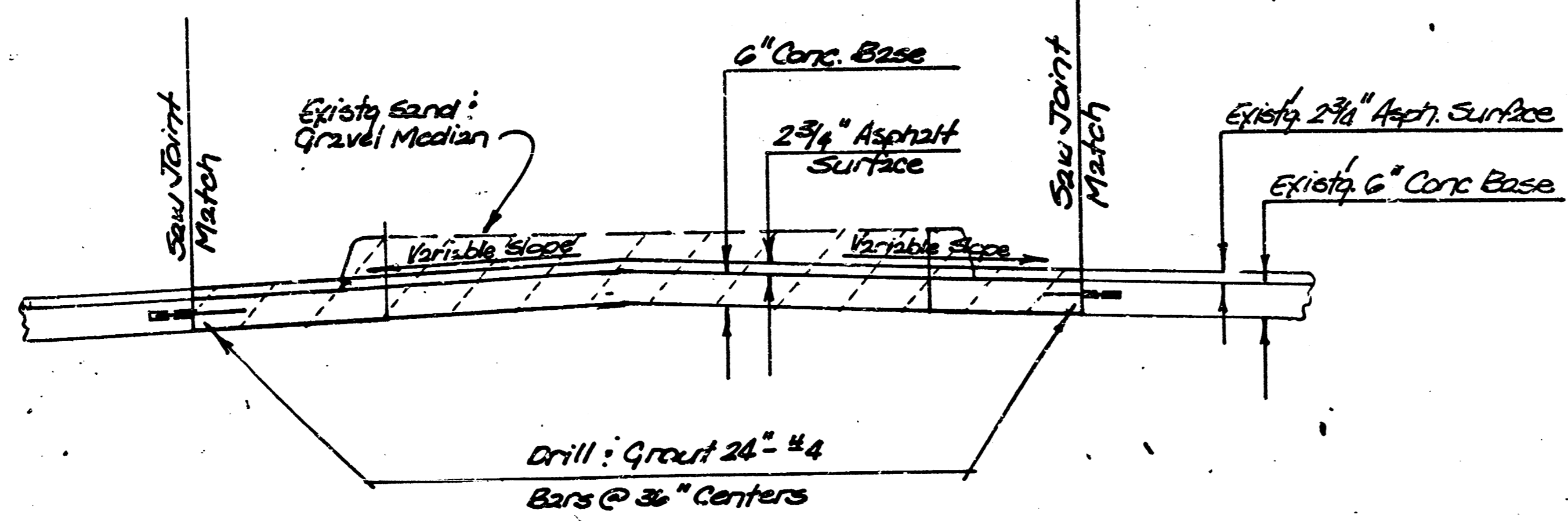
FILMED FROM THE BEST
AVAILABLE COPY

BENCH MARK: City Disc @ Benjamin : 21st, 108' W. of N Property line Benjamin, 3' S.E. of Q25 Regulator Shed. Elev = 126.26

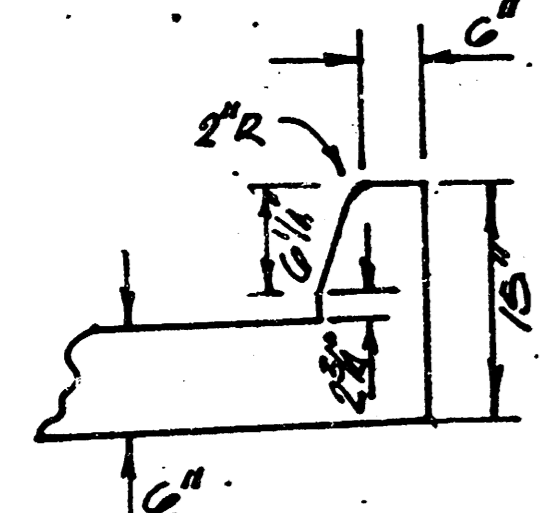
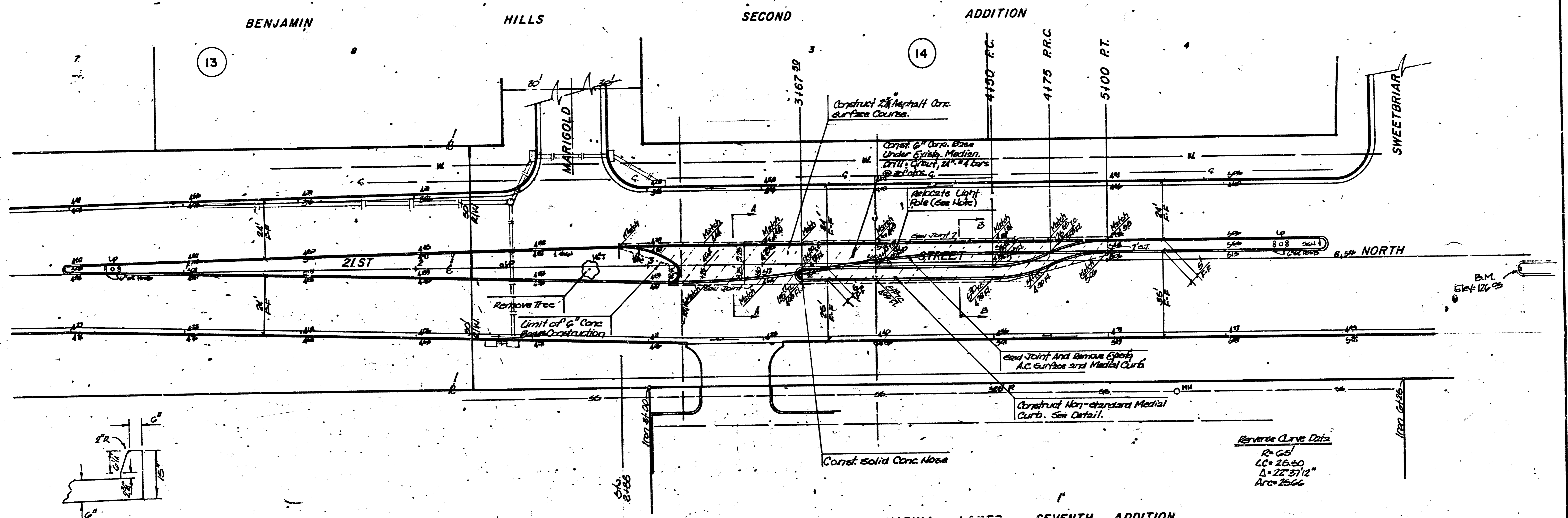
BENCH MARK: 1" Cut In Median Radius, 5' South of Station 4+78 (See Plan) Elevation = 126.05 City Datum



SCALE 1" = 20'

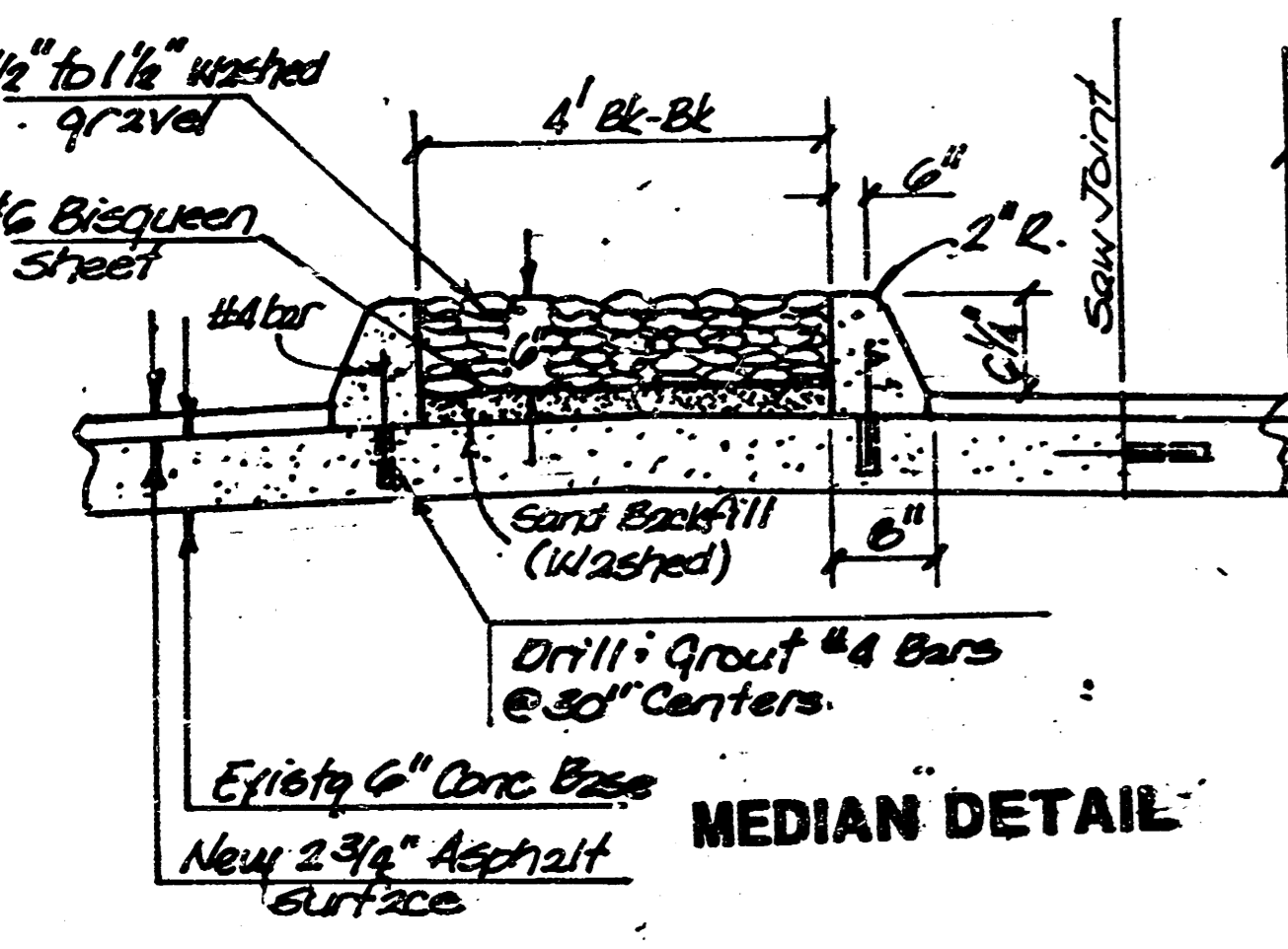


MEDIAN CROSS SECTION A-A

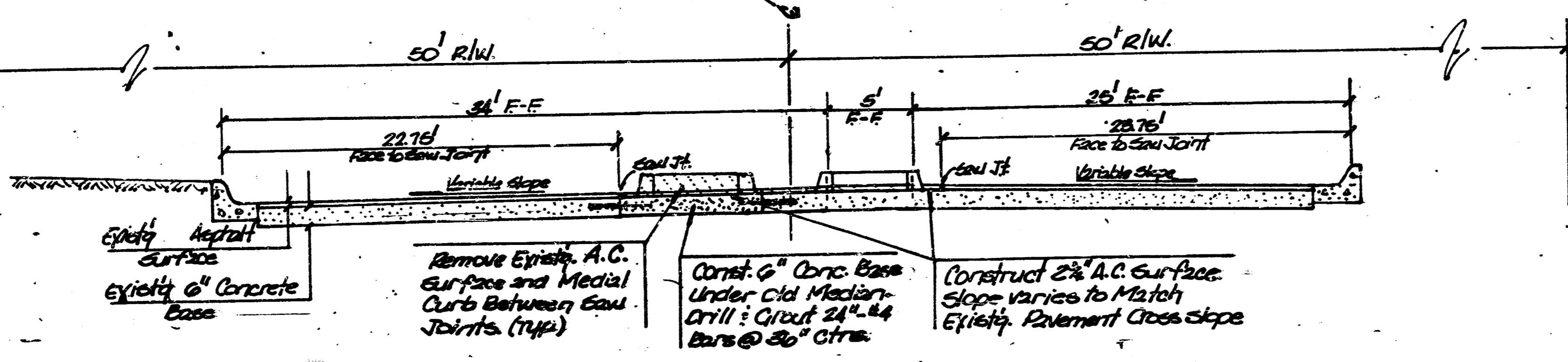


CURB DETAIL (NON STANDARD)

GOVT. LOT 1



MEDIAN DETAIL



MEDIAN CROSS SECTION B-B

MEDIAL BREAK ON 21ST ST. NORTH BETWEEN MARIGOLD AND SWEETBRIAR TO SERVE BRAUM'S ICE CREAM STORE

CITY OF WICHITA, KS

PROJECT NUMBER 472-76-245-80001-000-000-019

BAUGHMAN COMPANY, P.A.
SURVEYING & ENGINEERING
316-282-7271 • 330 LAURA • WICHITA, KANSAS 67211

FILMED FROM THE BEST AVAILABLE COPY