

General Notes

- Contractor will be required to provide notice to utility companies a minimum of twenty-four (24) hours prior to any excavation, as follows:
 Kansas One-Call 687-2470
 The Contractor must notify the following in case of an emergency:
 Cablevision 262-4270
 or 263-2061
 K.P.L. Gas Service Company 263-7511
 Kansas Gas & Electric Company 264-1141
 Peoples Nat. Gas Company 942-8350
 Southwestern Bell Telephone Company 1-571-2611
 City of Wichita Water Department 268-4008
 City of Wichita Sewer Maintenance 268-4071
- Utility service lines, poles, valve boxes, meters, and etcetera are to be adjusted as necessary by others prior to construction unless the plans specifically call for their adjustment by the Contractor or unless the plans specifically identify a utility to be adjusted by its owner during construction. Existing utilities and their location, as shown on the plans, represent the best information available for design. The contractor will be required to work around existing utilities within the right-of-way which conflict with proposed construction.
- Rubble from the removal of miscellaneous structures and excess excavation which is to be wasted shall be disposed of on sites to be provided by the Contractor. These sites shall be approved by the Engineer as to suitability, appearance and site location. Locations that, in the opinion of the Engineer, will leave an unsightly appearance will not be approved. All disposal sites must be approved by the Kansas Department of Health and Environment. Material either stockpiled or disposed of in a flood plain would a Kansas State Board of Agriculture permit. Any material dumped in waters of the United States or wetlands is subject to U.S. Corps. of Engineers permitting regulations. Any material buried or stockpiled beyond approved construction limits would require additional archaeological investigations unless buried in a previously approved borrow location.
- Trees and shrubs in public right-of-way which are in direct conflict with proposed new construction shall be removed by the Contractor with the Engineer's approval. Trees and shrubs which are not in direct conflict with proposed new construction shall be saved and protected from damage.
- Limits of earthwork shall match existing ground elevations at the right-of-way line unless otherwise noted on the plans with a new finished grade elevation. When a new finished grade elevation is shown, the earthwork shall extend one foot beyond the right-of-way line and then sloped up or down using permissible slopes to match the existing ground surface.
- This project does not include any provisions for construction of driveways.
- A saw cut of at least one-half the depth of existing surface courses or one-fourth the depth of the existing total pavement thickness shall be provided at locations where proposed construction abuts an existing surface course or pavement for which partial removal of that surface or pavement is required. Sawed joint to facilitate removal within three (3) feet of existing joints will not be permitted and for such instances the limits of removal shall extend to the existing joint. Such saw cuts will not be paid for directly and this cost shall be considered as subsidiary to the removal of the surface or pavement.
- The Contractor shall submit a traffic control plan to the Sedgwick County Bureau of Public Services for review and approval prior to commencing construction. Contact Mark Borst at 383-7901.
- Saw cuts, median pavement free relocation, and traffic control are to be incidental to the bid items.

PHASE 1 - 21ST STREET NORTH & RIDGE ROAD IMPROVEMENTS

21st STREET MEDIAN REMOVAL

Project Number
472-76-245-82735-000-000-001

Index Code
706382

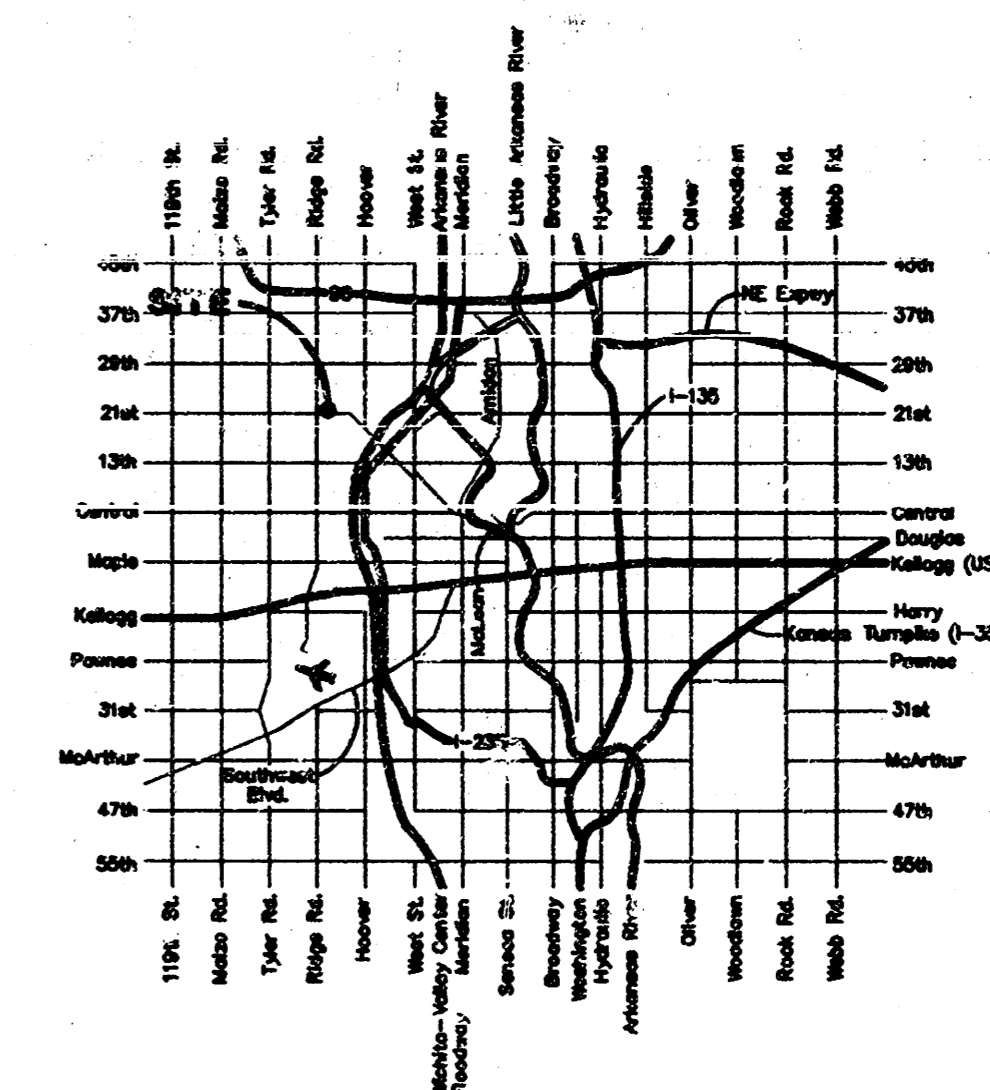
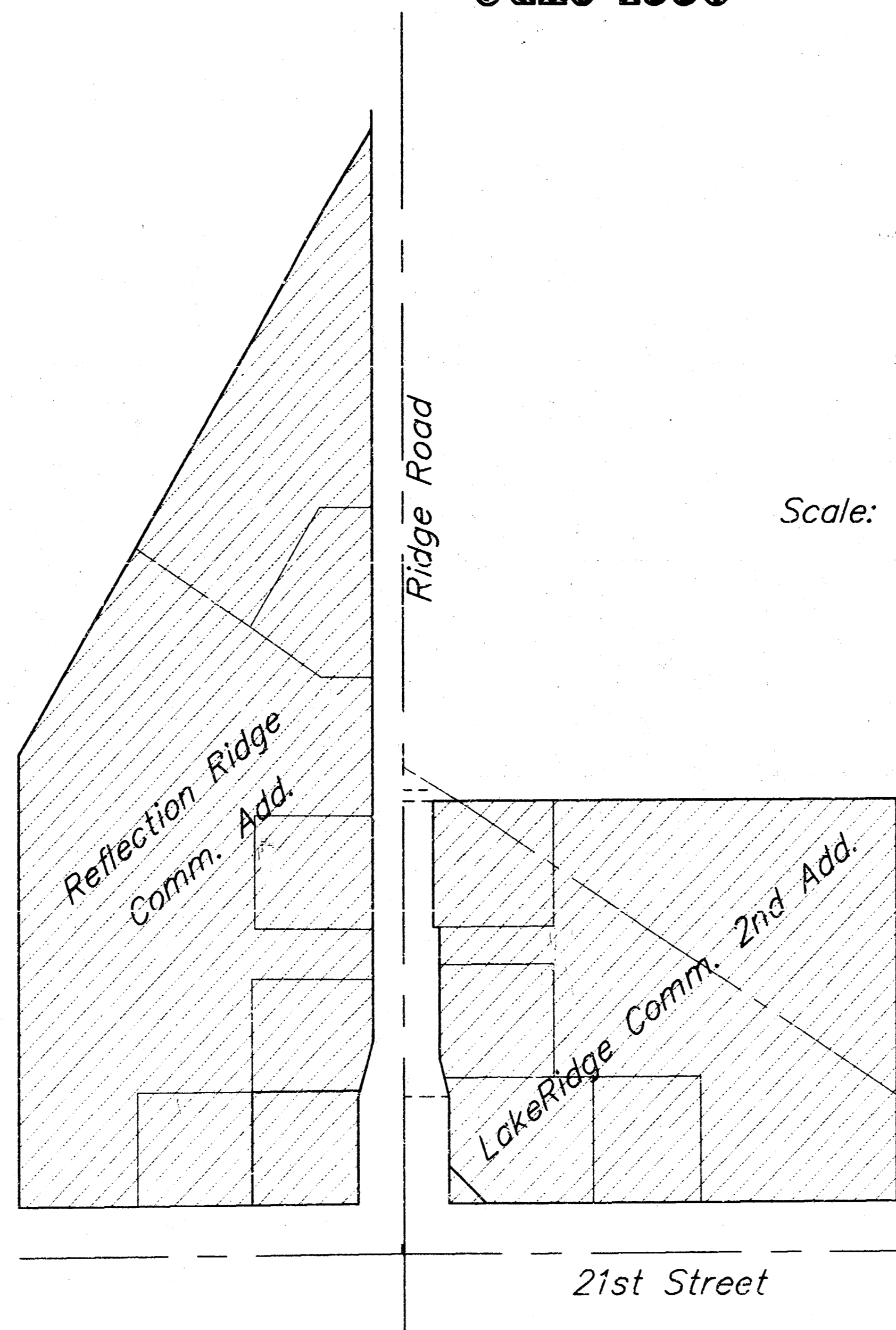
CITY OF WICHITA, KANSAS
 Michael E. Lindebak, P.E., City Engineer
 June 1996

BENCHMARKS:

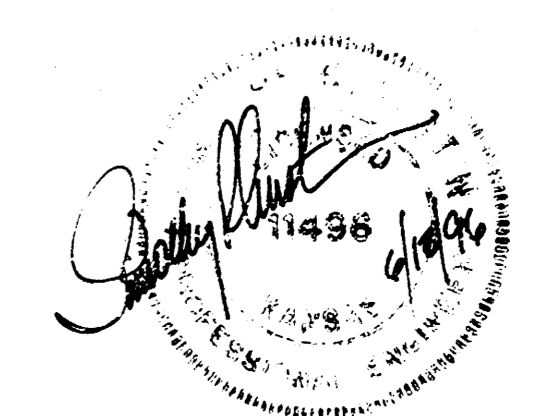
City of Wichita Disc @ NE Corner of
 21st North & Ridge Road, 65.6'N & 31.0'E
 @ of Both.
 Elev. = 142.34 City Datum

INDEX:

- Title Sheet
- Pavement Plans & Details
- Striping Plans



PROJECT AREA

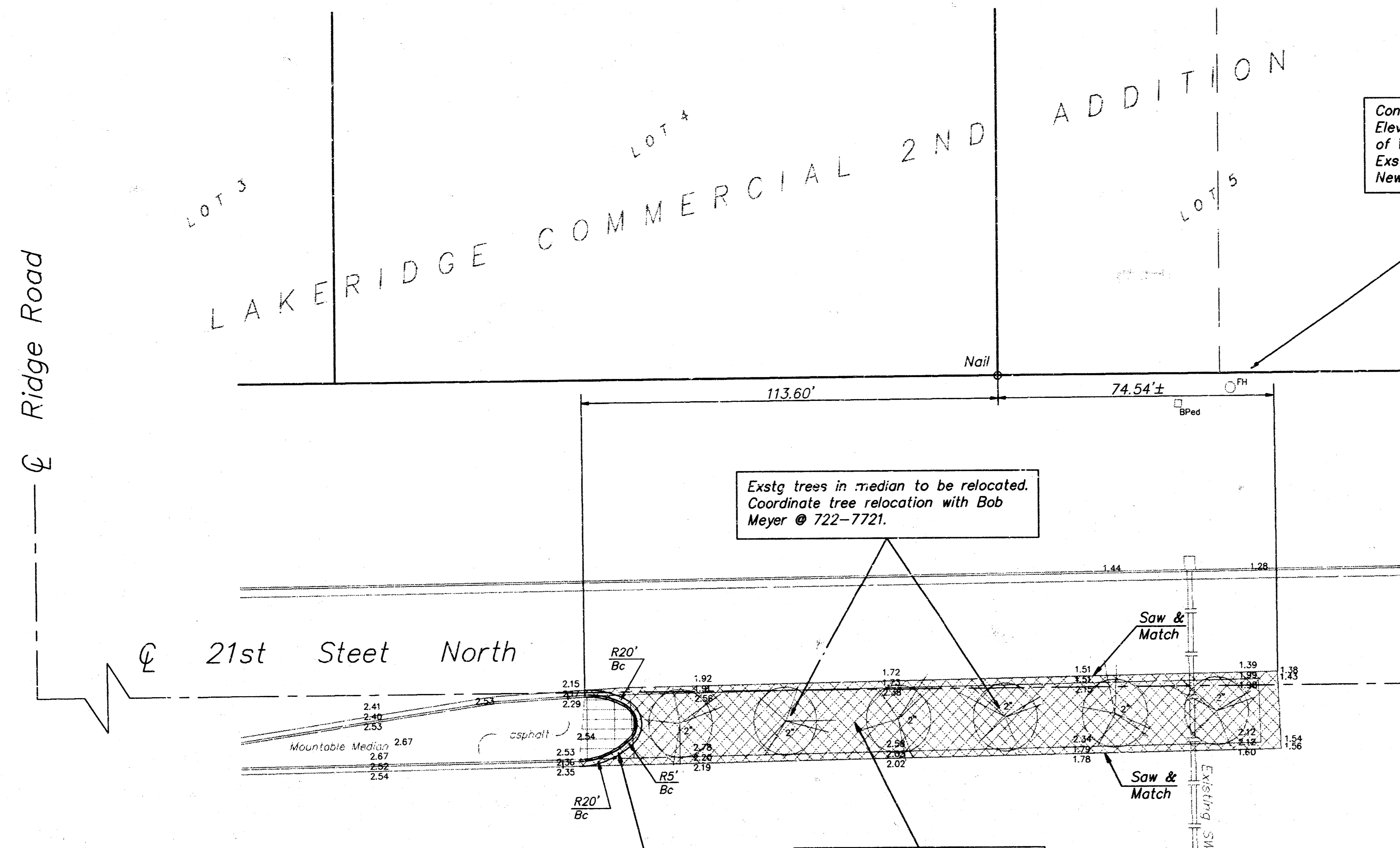


Benefit District: 

BAUGHMAN COMPANY P. A.
 ENGINEERING, SURVEYING, & PLANNING
 316-262-7271 • 315 ELLIS • WICHITA, KANSAS 67211

BENCHMARK:
 City of Wichita Disc.
 66.6' N & 31.0' E @ both
 21st & Ridge Road
 Elev. = 142.34

SCALE: 1" = 20'



Contractor to adjust FH Bury Elevation in accordance with City of Wichita specs using 0.5' ext. Exstg Bury Elev. = 138.26 (verify) New Bury Elev. = 141.76

Exstg trees in median to be relocated. Coordinate tree relocation with Bob Meyer @ 722-7721.

Construct Std Roll-type Median Cb & Gtr (3 5/8") and replace median pmt. Match existing grades.

Remove Existing Median Curb & Gutter. Replace with 7" A.C. Pavement w/ 8" Crushed Rock Base on Reinforcing Fabric. Saw Cut Where Necessary To Provide Neat Joint. Match Existing Pavement Grades Where New Pavement Abuts Old.

BASE.

General Notes

FABRIC BASE REINFORCEMENT SHALL BE B X 1100 BY TENSAR CORPORATION OR LBO201 BY TENAX CORPORATION OR APPROVED EQUAL. FABRIC BASE REINFORCEMENT SHALL BE INSTALLED IN ACCORDANCE WITH MANUFACTURER'S RECOMMENDATIONS.

ROCK BASE IS TO BE COMPACTED AND SMOOTHED WITH A STEEL FACED ROLLER PRIOR TO PLACEMENT OF ASPHALT. TACK COAT WILL NOT BE APPLIED TO ROCK.

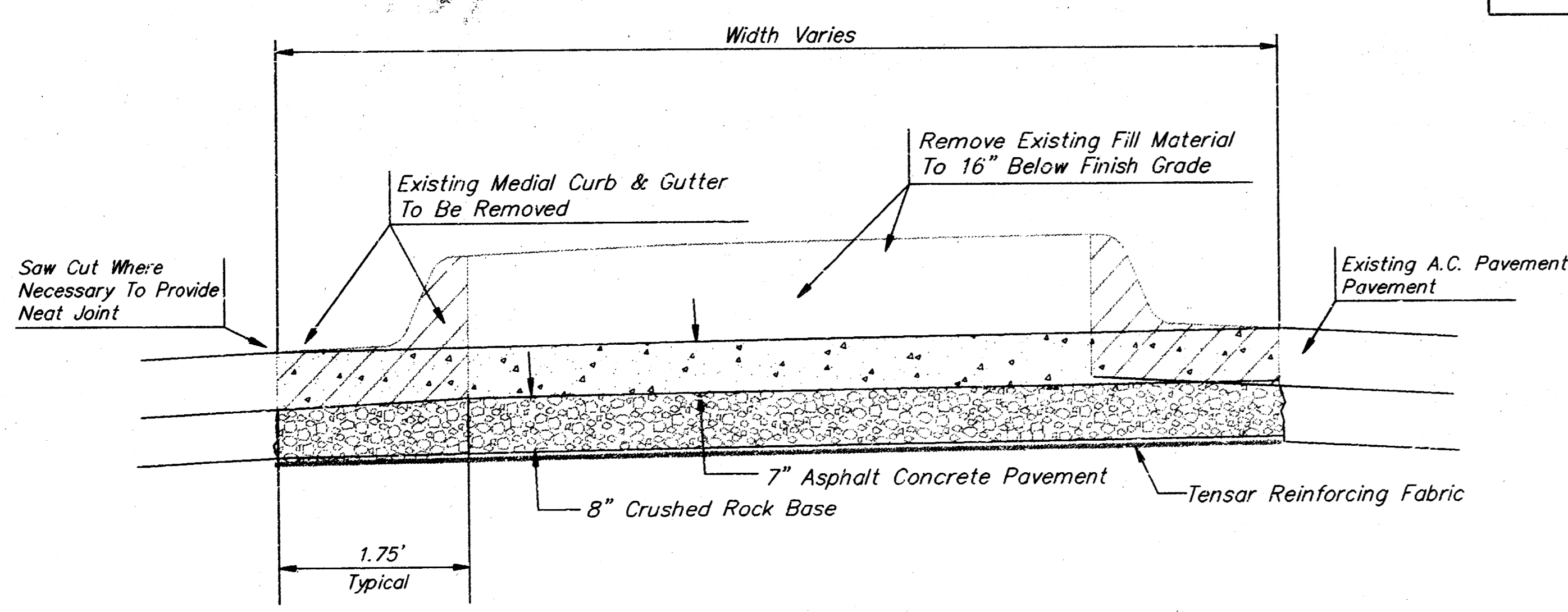
A TACK COAT OF EMULSIFIED ASPHALT (SC-1H OR CSS-1H) SHALL BE APPLIED AT AN APPROXIMATE RATE OF 0.35 GALLONS PER SQUARE YARD BETWEEN EACH LIFT OF ASPHALTIC MATERIAL.

BITUMINOUS BASE AND ASPHALTIC CONCRETE WEARING SURFACE SHALL BE PLACED WITH A LAYDOWN MACHINE HAVING AUTOMATIC CONTROLS FOR LINE AND GRADE.

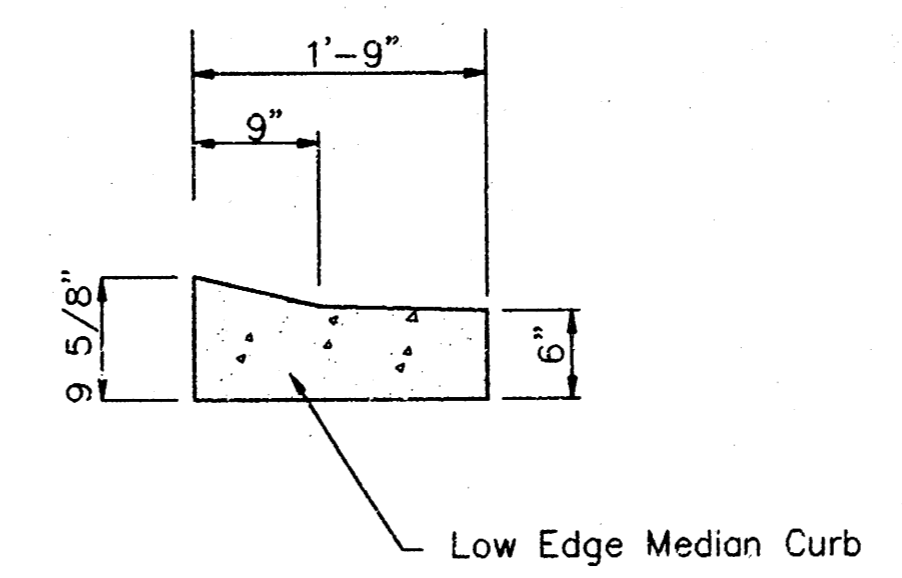
CRUSHED ROCK GRADATION REQUIREMENTS

PERCENT OF AGGREGATE RETAINED	
2-1/2"	0
3/4"	20 - 60
#4	50 - 80
#40	80 - 94
#200	90 - 98

ROCK QUALITY SHALL CONFORM TO THE REQUIREMENTS SPECIFIED BY THE KDOT 1990 EDITION STANDARD SPECIFICATION SUBSECTION 1102 FOR DURABILITY CLASS 1.



Typical Section Detail
(Not to Scale)



Roll Type Median Curb & Gutter
(Not to Scale)

21st Street
STREET IMPROV.

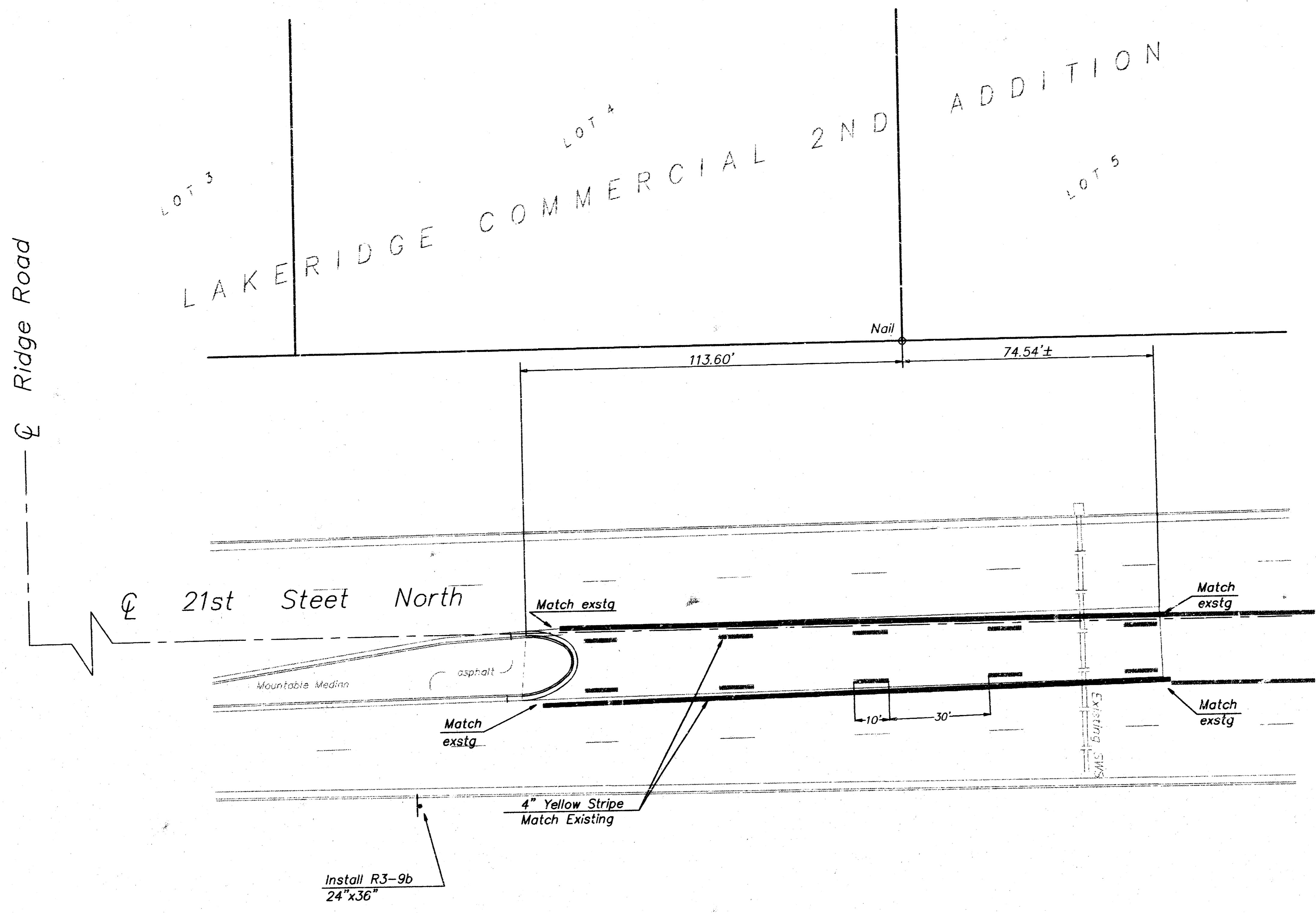
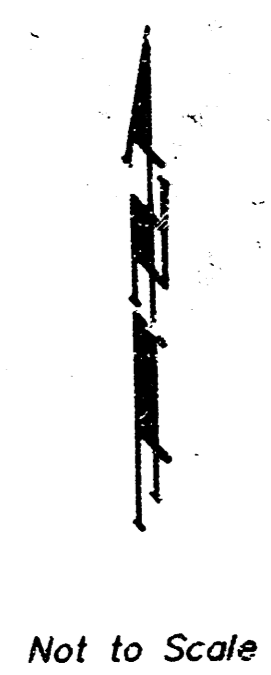
BAUGHMAN COMPANY P. A.
 ENGINEERING, SURVEYING, & PLANNING
 316-282-7271 • 315 ELLIS • WICHITA, KANSAS 67211

PROJECT NUMBER

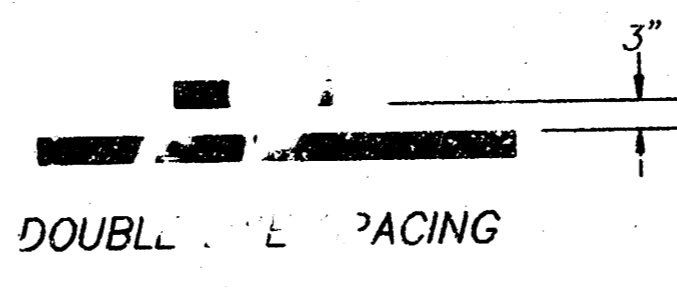
DESIGN TA	DRAWN TA/DY	APPROVED	DATE 4/JUN/96	SCALE NOTE	SHEET 2 OF 3
--------------	----------------	----------	------------------	---------------	-----------------------

R000271 (PART)

BENCHMARK:
 City of Wichita Disc.
 66.6' N & 31.0' E of both
 21st & Ridge Road
 Elev. = 142.34



GENERAL NOTES:
 All striping shall be "Heat-fused Retroreflective Preformed Thermoplastic Pavement Markings" in accordance with Sedgwick County Special Provisions. A copy of the special provision is available by contacting Mark Borst @ 383-7901.
 Materials and installation for signage shall be in accordance with City of Wichita specifications.



21st Street
STRIPING & SIGNAGE

BAUGHMAN COMPANY P. A.
 ENGINEERING, SURVEYING, & PLANNING
316-262-7271 • 315 ELLIS • WICHITA, KANSAS 67211

PROJECT NUMBER		SHEET	
		2	3
DESIGN	DRAWN	APPROVED	DATE
TA	TA/DY	[Signature]	4/JUN/96
SCALE		NOTE	

10-10-15