

PAVING IMPROVEMENTS TO SERVE
GOLF PARK WEST ADDN.
21ST DECEL LANE

Project Number
472-83061
 Index Code
765552

AND
 Project Number
448-89368

CITY OF WICHITA, KANSAS
 Michael E. Lindebak, P. E., City Engineer

BENCHMARK:

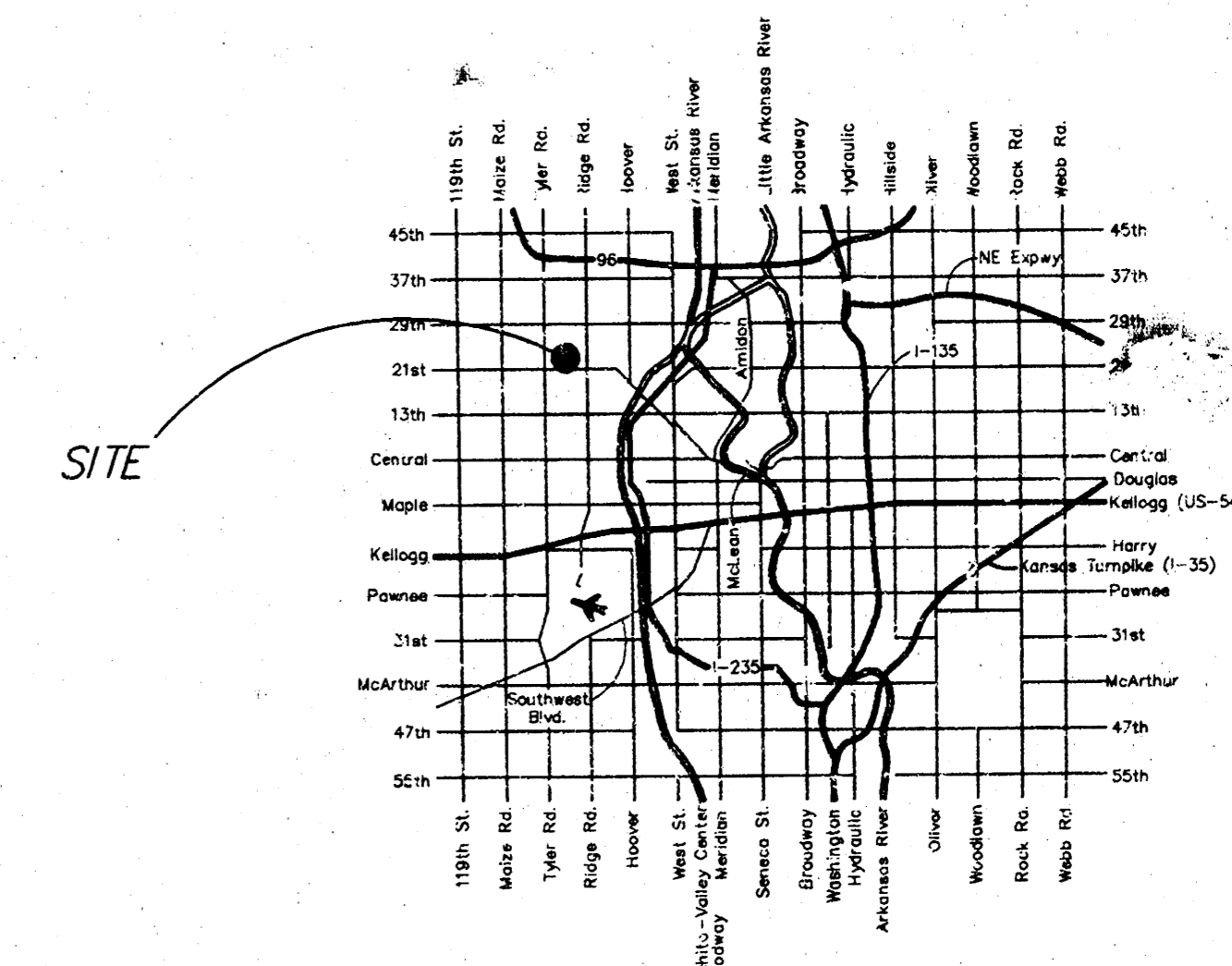
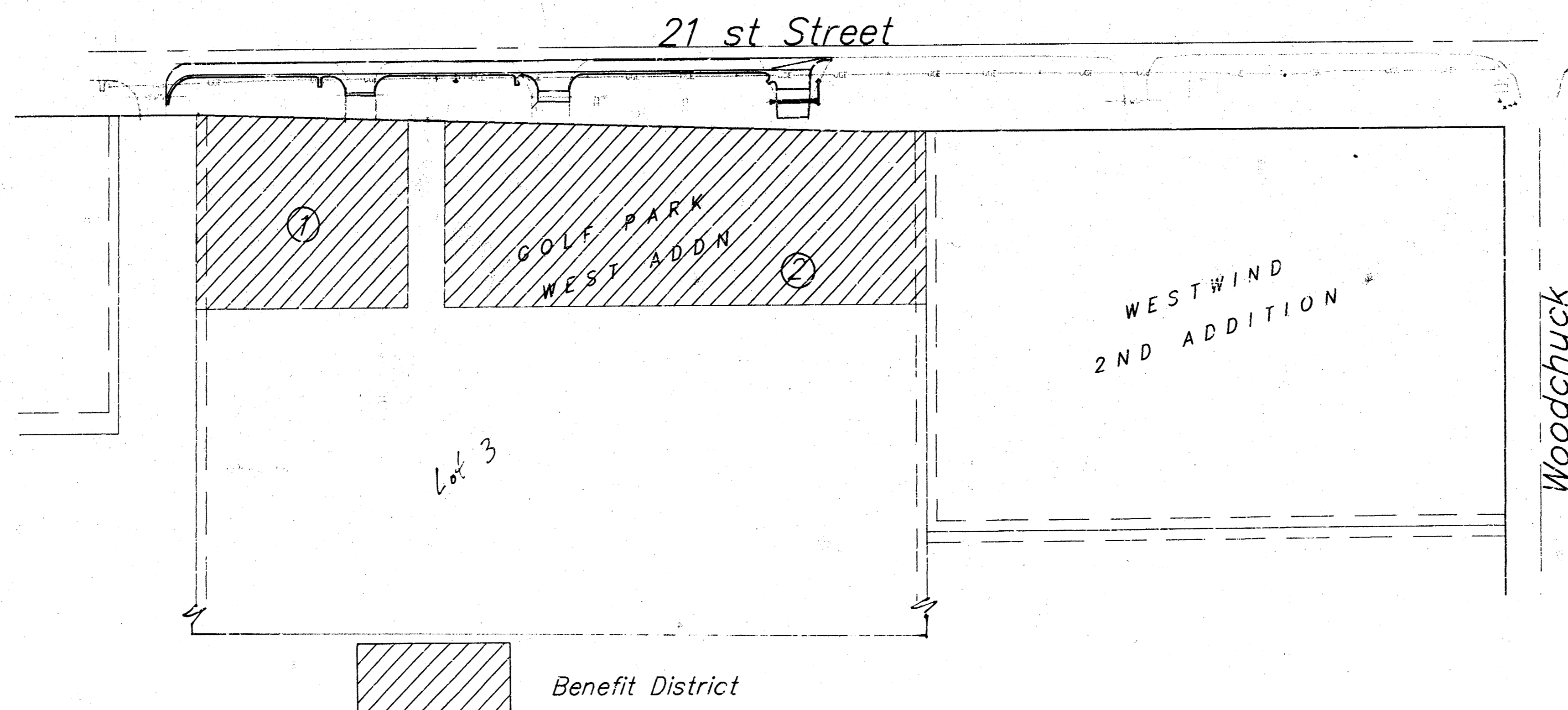
SW Corner Intersection of 21st & Woodchuck
 South End West Hubguard 3.5' X 6' RCBC
 Elev 162.45

GENERAL NOTES

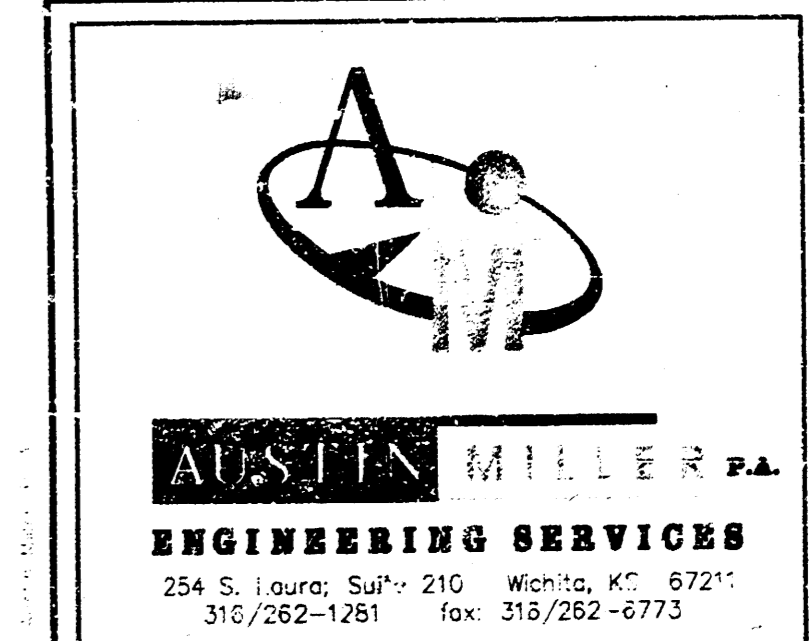
- Contractor will be required to provide notice to utility companies a minimum of twenty-four (24) hours prior to any excavation, as follows:
 Kansas One-Call 687-2470
 The Contractor must notify the following in case of an emergency:
 Cablevision 262-4270
 or 263-2061
 K.P.L. Gas Service Company 383-8650
 Kansas Gas & Electric Company 383-8600
 Arka Gas Company 942-8350
 Southwestern Bell Telephone Company 1-571-2611
 City of Wichita Water Department 268-4908
 City of Wichita Sewer Department 268-4071
 Kansas Gas Service 832-3168
 or 832-3167
- Exist. utilities and their locations, as shown on the plans, represent the best information obtainable for design. Location information has been obtained from the various utility companies and is either from company record drawings or company-provided field locations. The Contractor will be required to work around existing utilities which do not conflict with proposed construction.
- The Contractor to verify utility locations prior to construction of this project.
- Utility service and installation shall be coordinated with the respective utility owners. Contacts are:
 Kansas Gas Service Jim Stoltz 832-3122
 K.G.E. Russ Chitwood 261-6251
 Wichita Water Paul Bryant 268-4555
 Joe Botinelly 268-4908
 Southwestern Bell Jim Tobin 268-2759
- Traffic affected by the construction of this project shall be handled in accordance with the latest edition of the Manual on Uniform Traffic Control Devices.
- All lawn/turf areas disturbed by construction of proposed improvements shall be restored with the same grass/sod as existing. Restoration of disturbed areas shall include, but not be limited to, top soil preparation, seeding, mulch and/or reseeding. All seeding/sodding work shall be in accordance with the City of Wichita standard specifications and the City of Wichita administrative regulation No. AR78 which governs cleanup and replacement following construction. All costs for this work shall be subsidiary to the lump sum price bid for "Site Restoration."

INDEX

- 1 Cover
- 2-3 Paving Plan Sheets (21st)
- 4 Fire Hydrant Plan & Profile
- 5 Water Details
- 6 Valley Gutter Details
- 7-8 Cross-Sections



LOCATION MAP

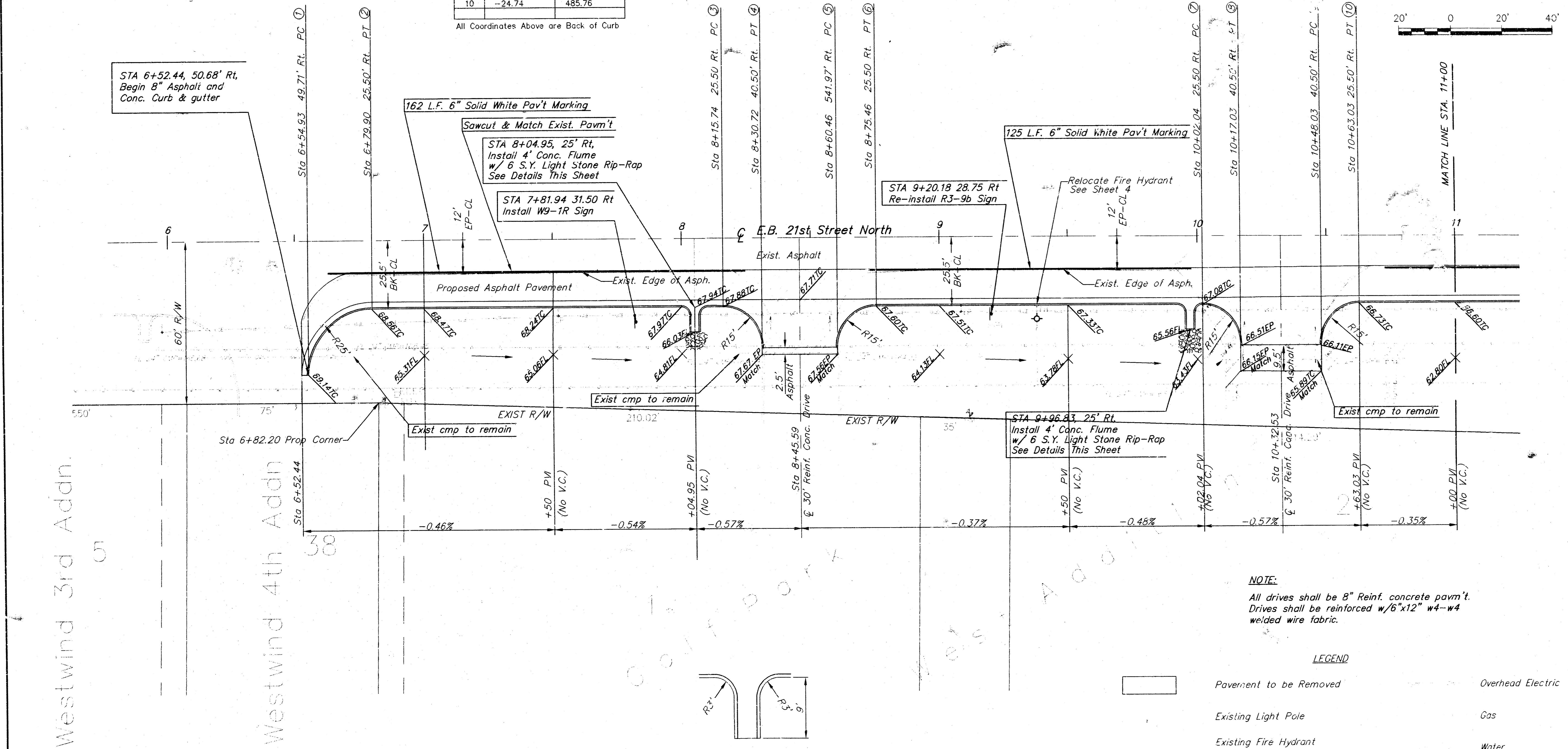
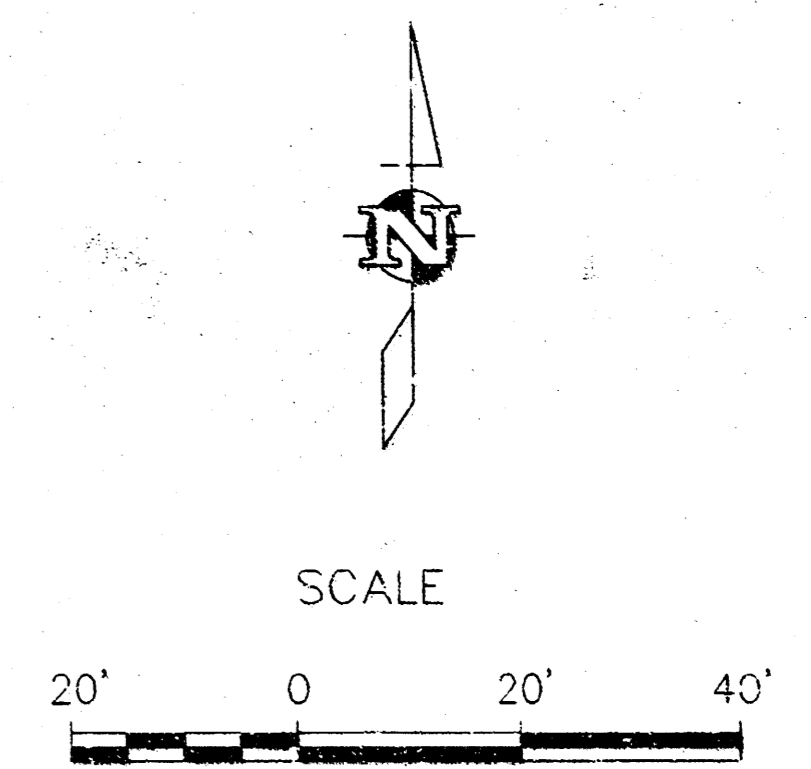


CONTROL POINTS:
 ① NE Corner Lot 1 Golf Park West Addition
 N=-66.10
 E=314.88
 ② Pipe 9' S, 74.60' W of Exist. FH
 N=-33.72
 E=291.28

BENCHMARK:
 SW Corner Intersection of 21st & Woodchuck
 South End West Hubguard 3.5' x 6' RCBC
 Elev 162.45

| POINT | NORTHING | EASTING |
|-------|----------|---------|
| 1 | -49.38 | 77.66 |
| 2 | -25.15 | 102.62 |
| 3 | -25.15 | 238.46 |
| 4 | -40.33 | 253.45 |
| 5 | -40.15 | 283.18 |
| 6 | -25.15 | 298.19 |
| 7 | -25.15 | 424.76 |
| 8 | -40.15 | 439.76 |
| 9 | -39.74 | 470.76 |
| 10 | -24.74 | 485.76 |

All Coordinates Above are Back of Curb



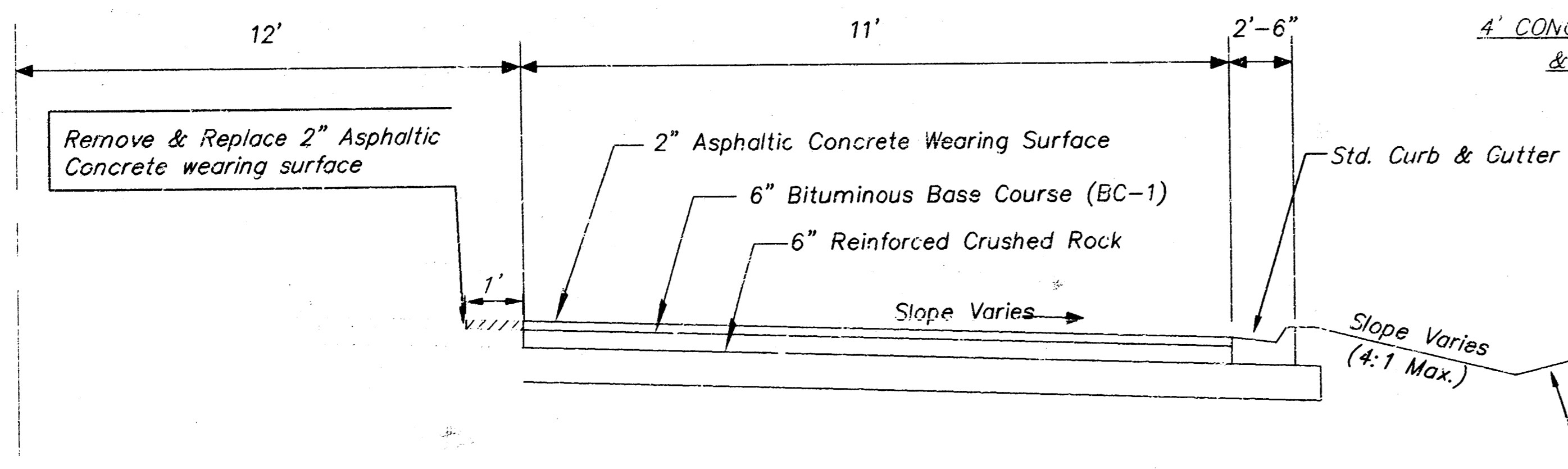
Westwind 3rd Addn.

Westwind 4th Addn.

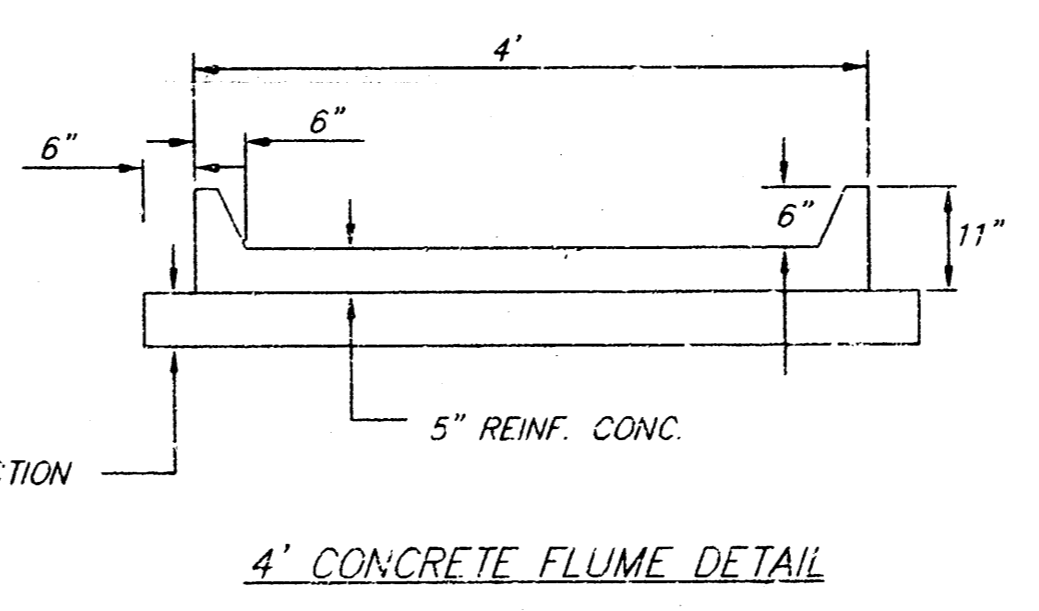
NOTE:
 All drives shall be 8" Reinf. concrete pavm't.
 Drives shall be reinforced w/6"x12" w4-w4
 welded wire fabric.

LEGEND

- Pavement to be Removed
- Existing Light Pole
- Existing Fire Hydrant
- Existing Power Pole
- Existing Water Valve
- Existing Manhole
- Existing Gas Meter
- Overhead Electric
- Gas
- Water
- Sanitary Sewer
- Storm Water Sewer
- Underground Telephone



4' CONC. FLUME AT STA. 8+04.95 & STA. 9+96.83



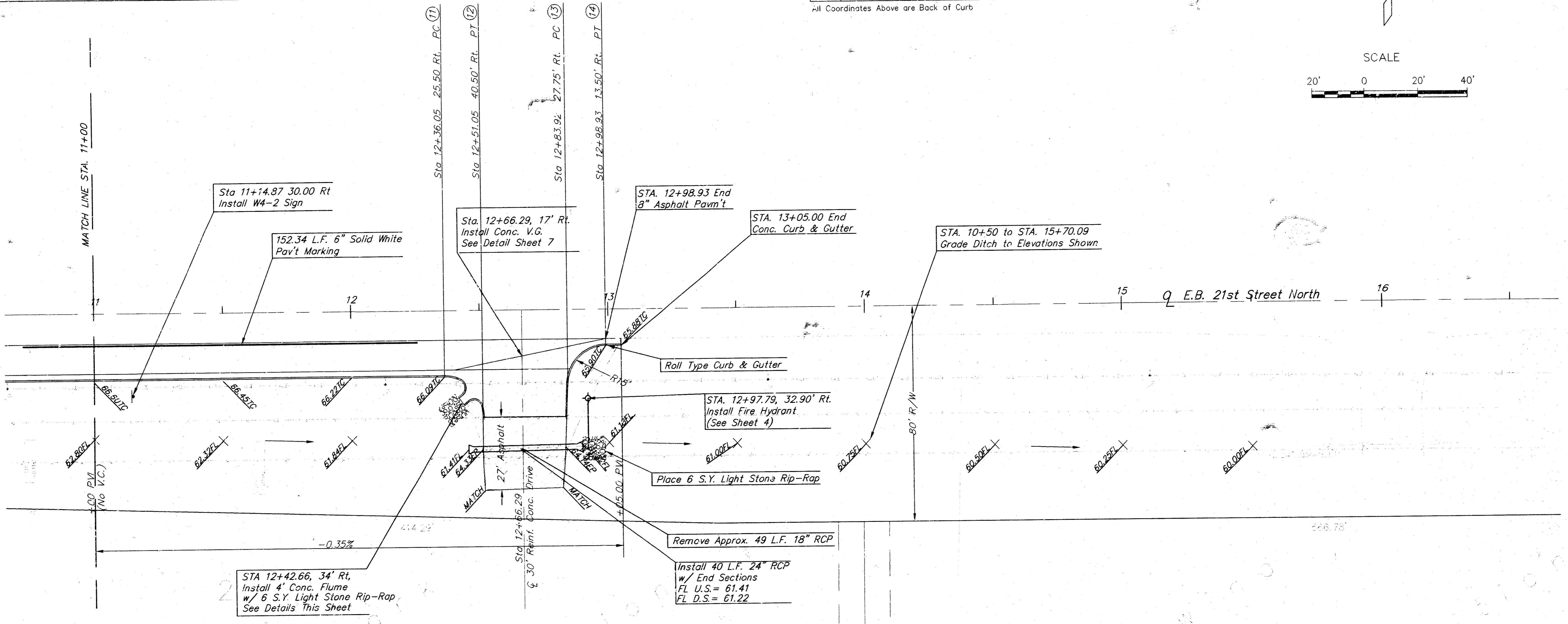
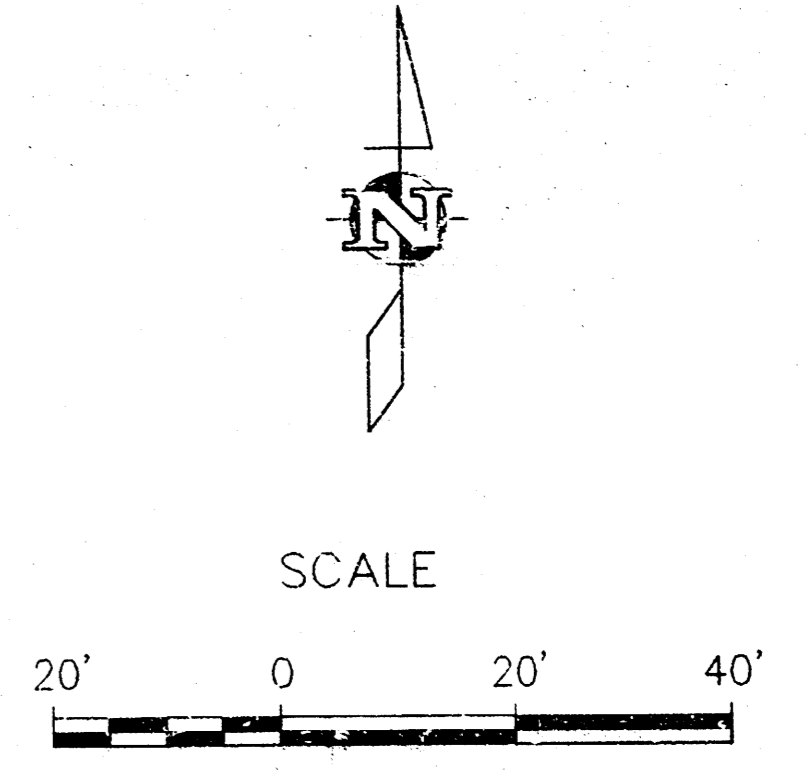
| | | | | | |
|--|------------------------------------|-------------|------------------|--|-------------------------------------|
| | PROJECT NUMBER 472-83061 | | AM. NO. 98712 | GOLF PARK WEST ADDITION DECEL LANE Wichita, KS | SHEET 2 OF 8 |
| | DESIGN DK | DRAWN MY | FILE pvl | | |

CONTROL POINTS:
 ① NE Corner Lot 7
 Golf Park West Addition
 N=-66.10
 E=314.88
 ② Pipe 9' S, 74.60' W
 of Exist. FH
 N=-33.72
 E=291.28

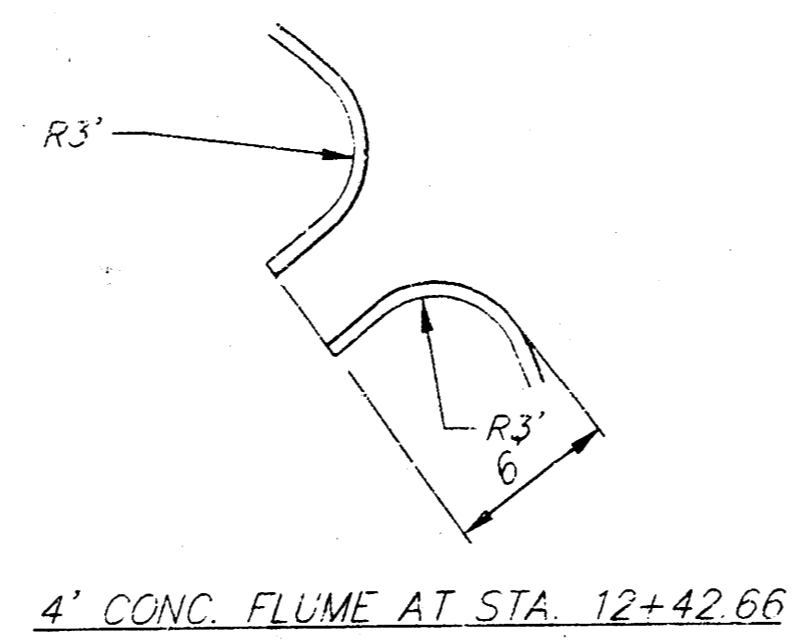
BENCHMARK:
 SW Corner Intersection of 21st & Woodchuck
 South End West Hubguard 3.5' X 6' RCBC
 Elev 162.45

| COORDINATE TABLE | | |
|------------------|----------|---------|
| POINT | NORTHING | EASTING |
| 11 | -24.65 | 658.78 |
| 12 | -39.65 | 673.78 |
| 13 | -39.66 | 706.09 |
| 14 | -13.60 | 721.62 |

All Coordinates Above are Back of Curb



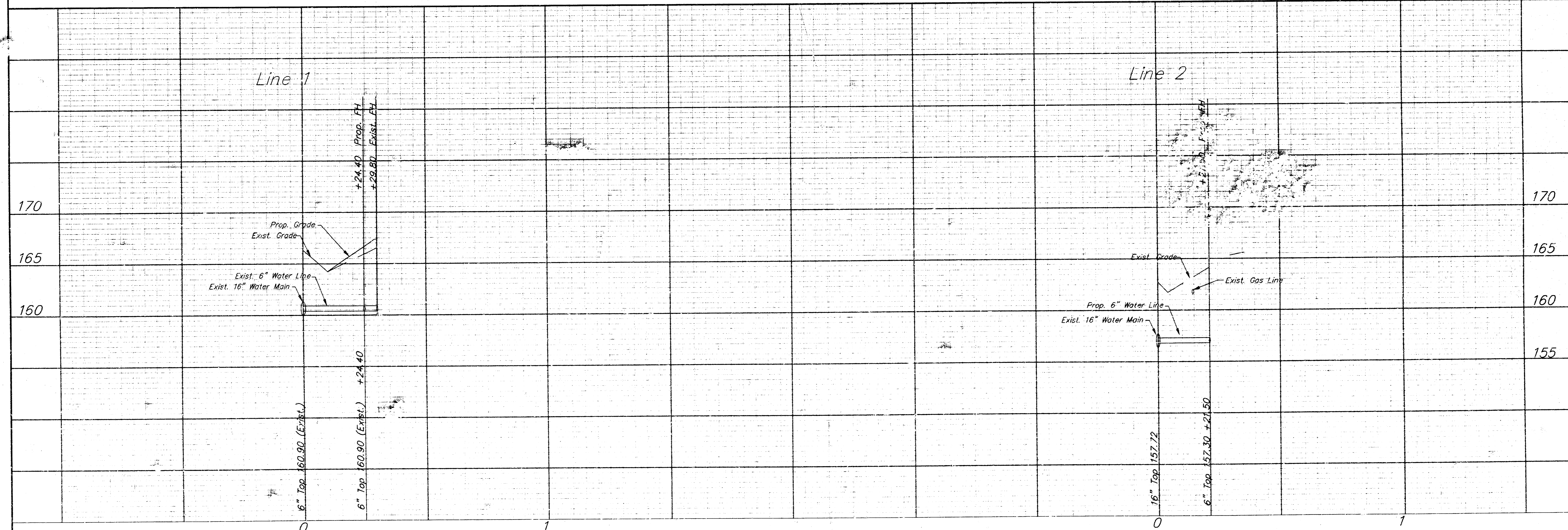
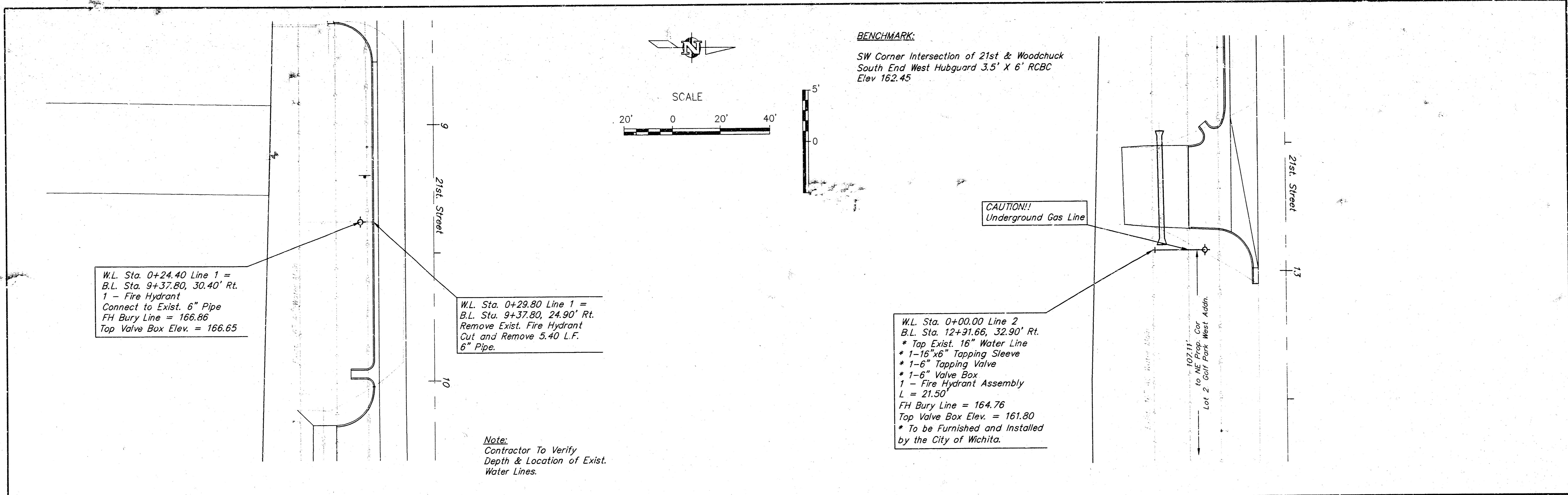
NOTE:
 All drives shall be 8" Reinf. concrete pavm't.
 Drives shall be reinforced w/6"x12" w4-w4 welded wire fabric.



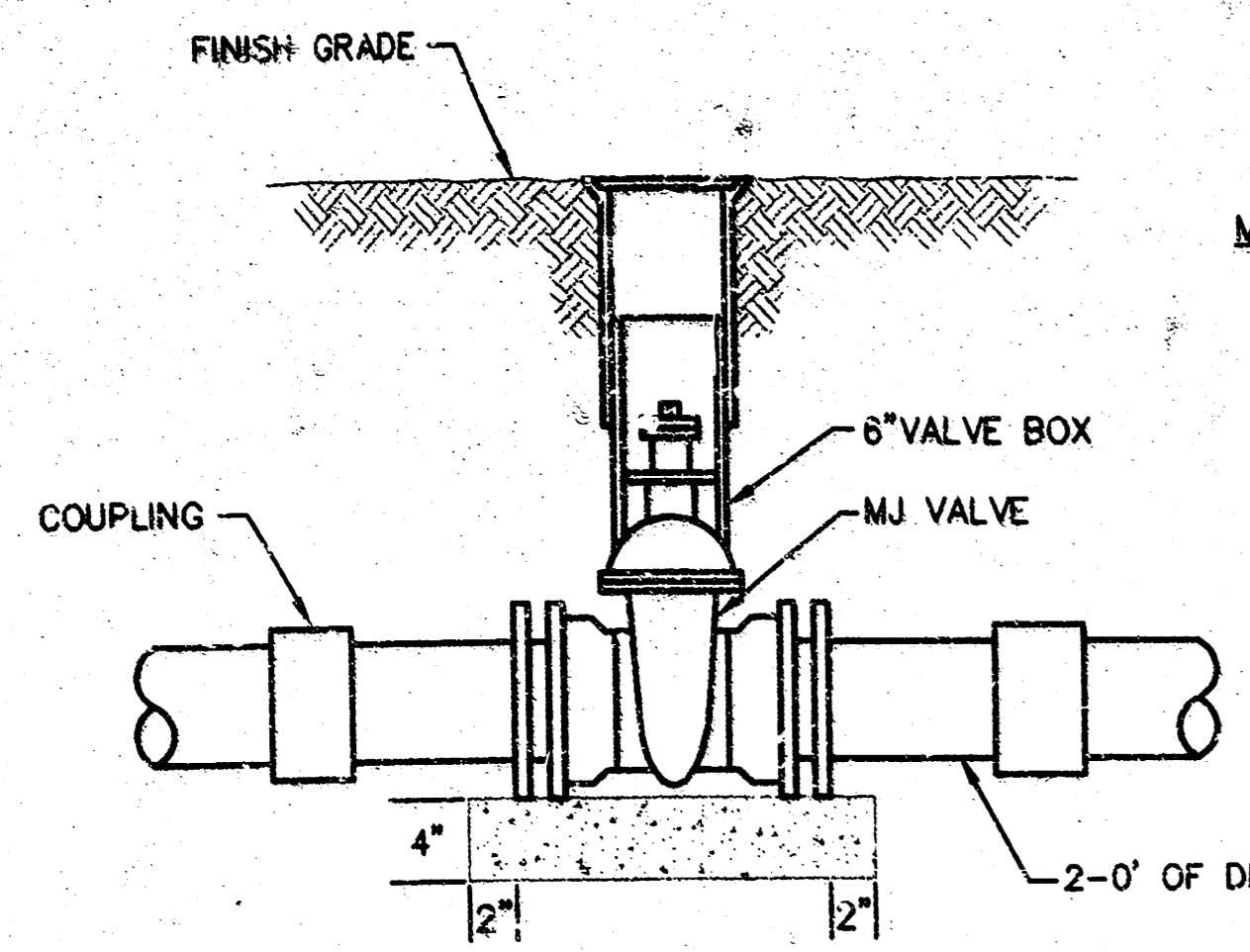
LEGEND

| | | | |
|--|------------------------|--|-----------------------|
| | Pavement to be Removed | | Overhead Electric |
| | Existing Light Pole | | Gas |
| | Existing Fire Hydrant | | Water |
| | Existing Power Pole | | Sanitary Sewer |
| | Existing Water Valve | | Storm Water Sewer |
| | Existing Manhole | | Underground Telephone |
| | Existing Gas Meter | | |

| | | | | | |
|--|------------------------------------|-------------|------------------|--|-------------------------------------|
| | PROJECT NUMBER 472-83081 | | AM. NO. 98172 | GOLF PARK WEST ADDITION DECEL LANE Wichita, KS | SHEET 3 OF 8 |
| | DESIGN DK | DRAWN DK | FILE dov2 | | |

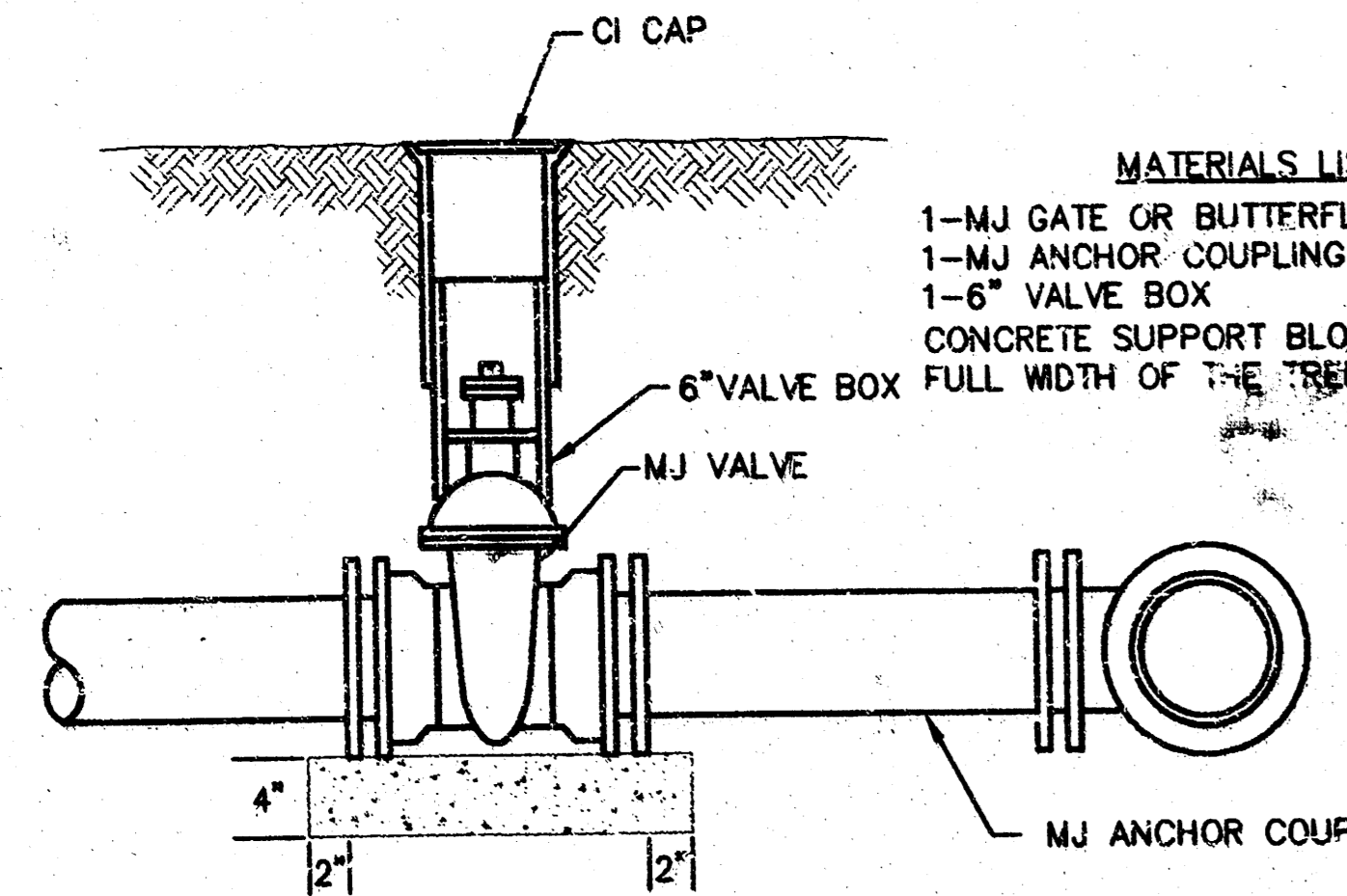


| | | | | | | | |
|--|------------------------------------|-------------|--------------|----------------|------------------|---|--|
| | PROJECT NUMBER 448-89368 | | | | AM. NO. 98112 | GOLF PARK WEST ADDITION FIRE HYDRANTS Wichita, KS | SHEET 4 OF 8 REVISED |
| | DESIGN DK | DRAWN DK | FILE wof1 | DATE 2/1/99 | SCALE 1"=20' | | |



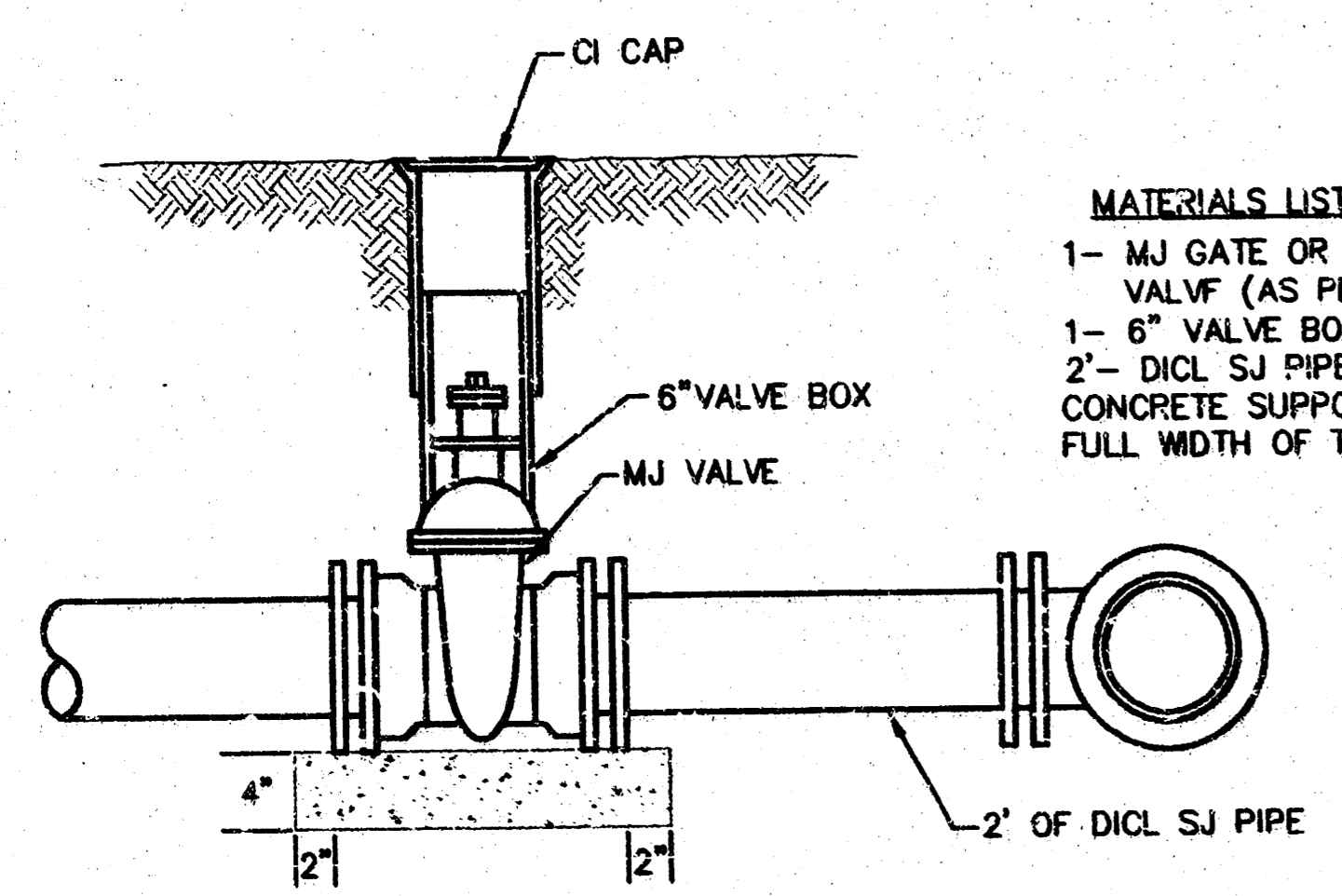
LINE VALVE ASSEMBLY

- MATERIALS LIST**
 1-MJ GATE OR BUTTERFLY VALVE (AS PER PLAN)
 1-6" VALVE BOX
 2-COUPPLINGS
 2-SHORT PCS (D.I.C. S.J. PIPE)
 CONCRETE SUPPORT BLOCK SHALL BE FULL WIDTH OF THE TRENCH



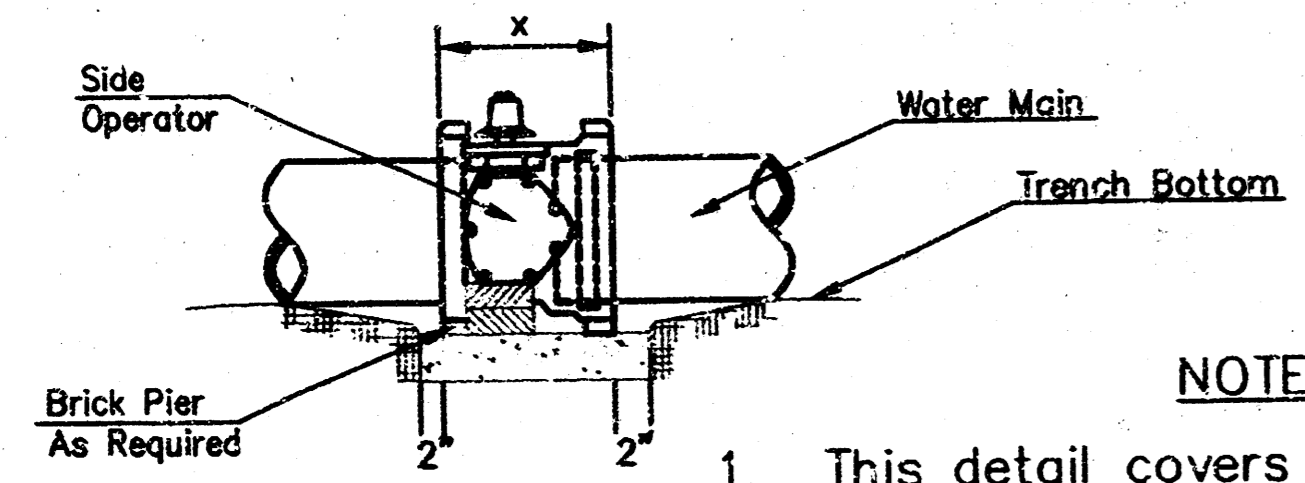
ANCHORED VALVE ASSEMBLY

- MATERIALS LIST**
 1-MJ GATE OR BUTTERFLY VALVE (AS PER PLAN)
 1-MJ ANCHOR COUPLING (1/2" OR SMALLER)
 1-6" VALVE BOX
 CONCRETE SUPPORT BLOCK SHALL BE FULL WIDTH OF THE TRENCH



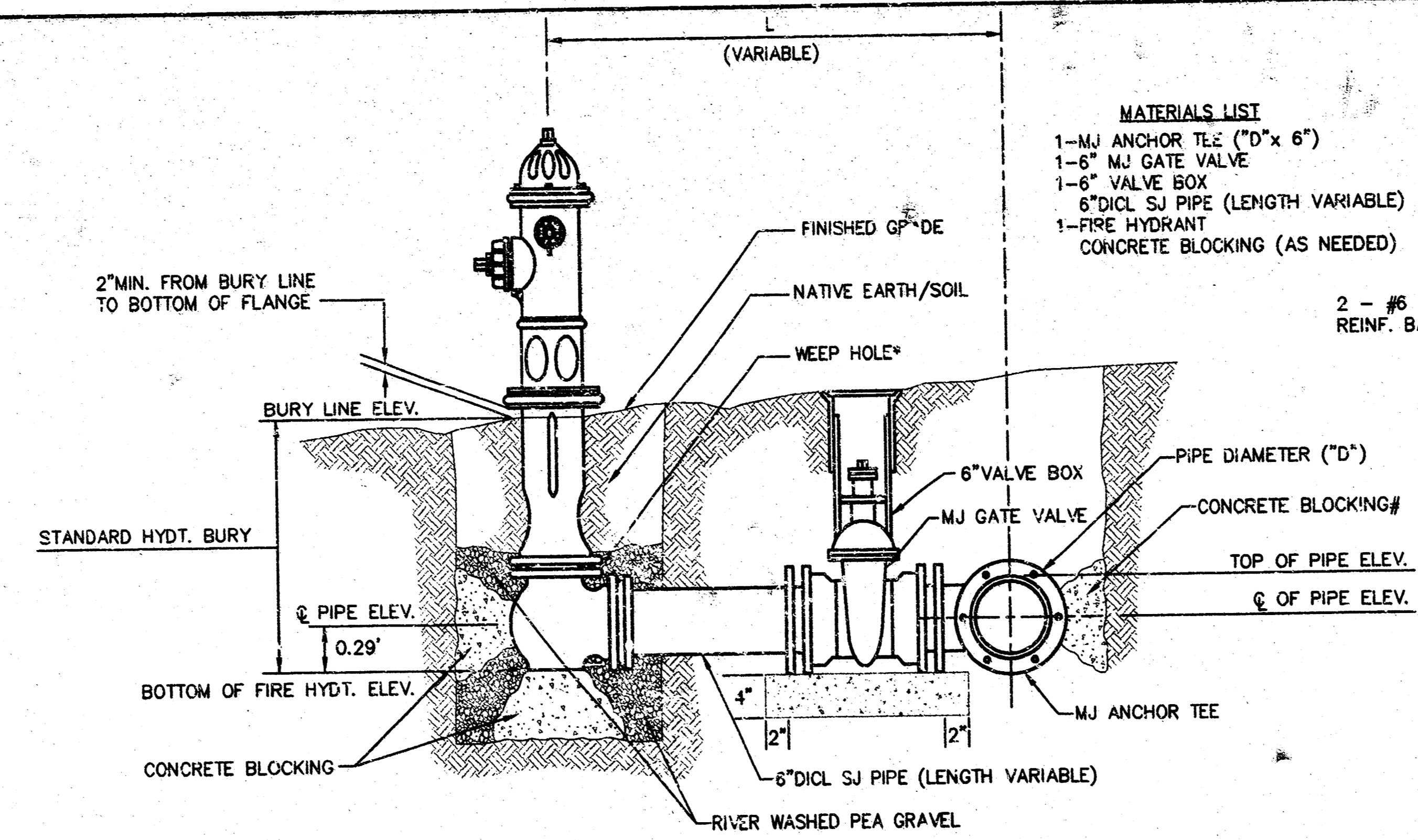
VALVE ASSEMBLY

- MATERIALS LIST**
 1-MJ GATE OR BUTTERFLY VALVE (AS PER PLAN)
 1-6" VALVE BOX
 2-D.I.C. S.J. PIPE
 CONCRETE SUPPORT BLOCK SHALL BE FULL WIDTH OF THE TRENCH



CONCRETE SUPPORT BLOCKING FOR BUTTERFLY VALVE INSTALLATION

- NOTES**
- This detail covers Butterfly Valve installation, inclusive, regardless of type of pipe or joint used. Larger lines to be detailed on plans.
 - 6" Valve Box and Cover required per City of Wichita Std. Specifications.
 - Conc. Support Block to be full width of trench.



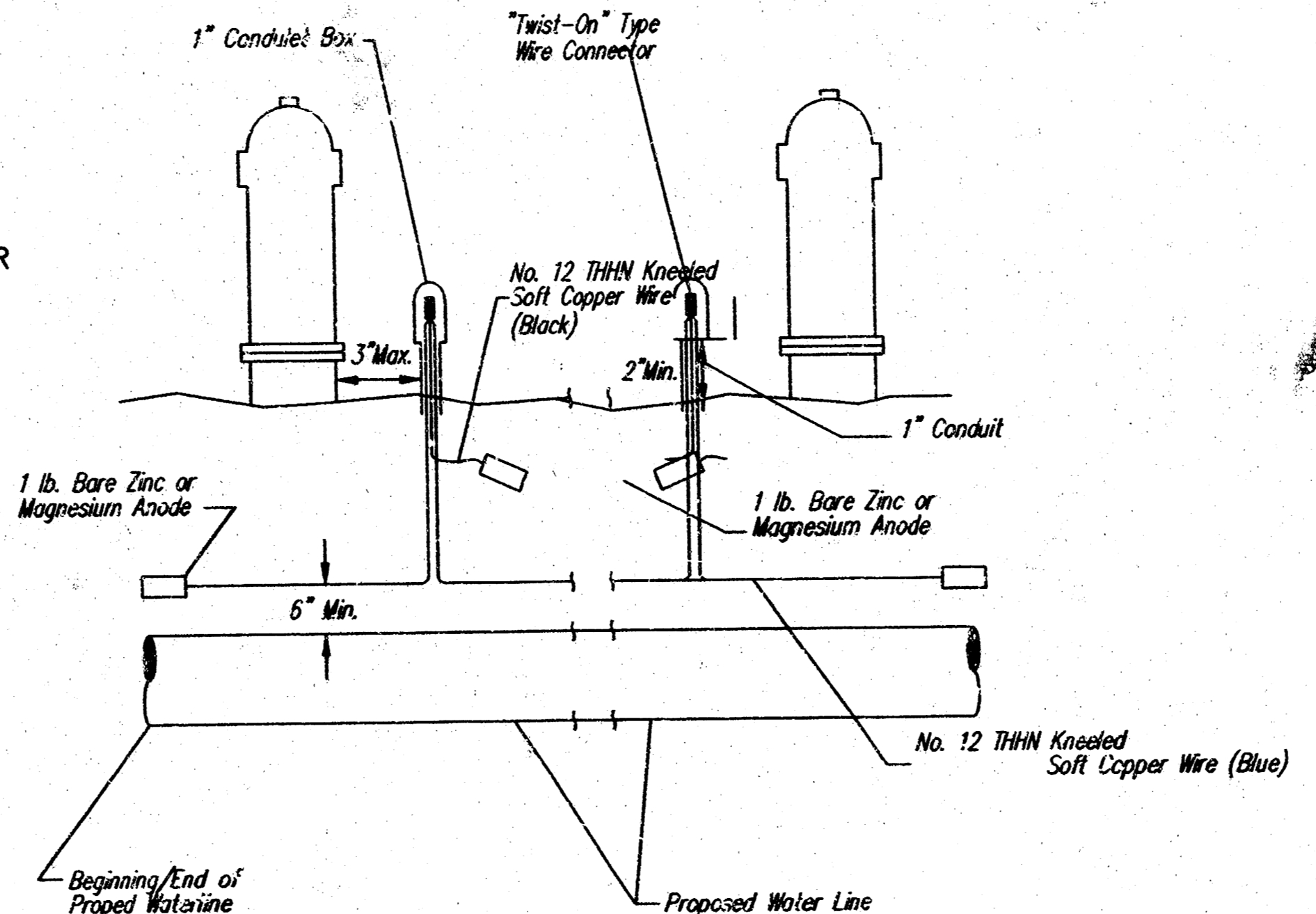
FIRE HYDRANT ASSEMBLY

PER CITY OF WICHITA SPECIFICATIONS

| FIRE HYDRANTS REQUIRED | | | |
|------------------------|---------------------|-----------------------|----------------------------|
| STATION | BURY LINE ELEVATION | TOP OF PIPE ELEVATION | FIRE HYDRANT BURY REQUIRED |
| 0+24.40 Line 1 | 166.86 | 160.90 | 6.5' |
| 0+00 Line 2 | 164.70 | 157.72 | 6' |

IF HYDRANT BURY IS IN EXCESS OF 5', CONTRACTOR SHALL USE STANDARD 5' HYDRANT BURY AND HYDRANT BARREL EXTENSIONS AS NECESSARY.

- CAUTION! WEEP HOLES TO BE KEPT CLEAR DURING CONSTRUCTION AND BACKFILL. CONCRETE FOR THRUST BLOCKING SHALL NOT OBSTRUCT WEEP HOLES.
- CONCRETE THRUST BLOCKING SHALL BE KEPT CLEAR OF BOLTS, NUTS, AND MJ ACCESSORIES.



TRACER WIRE

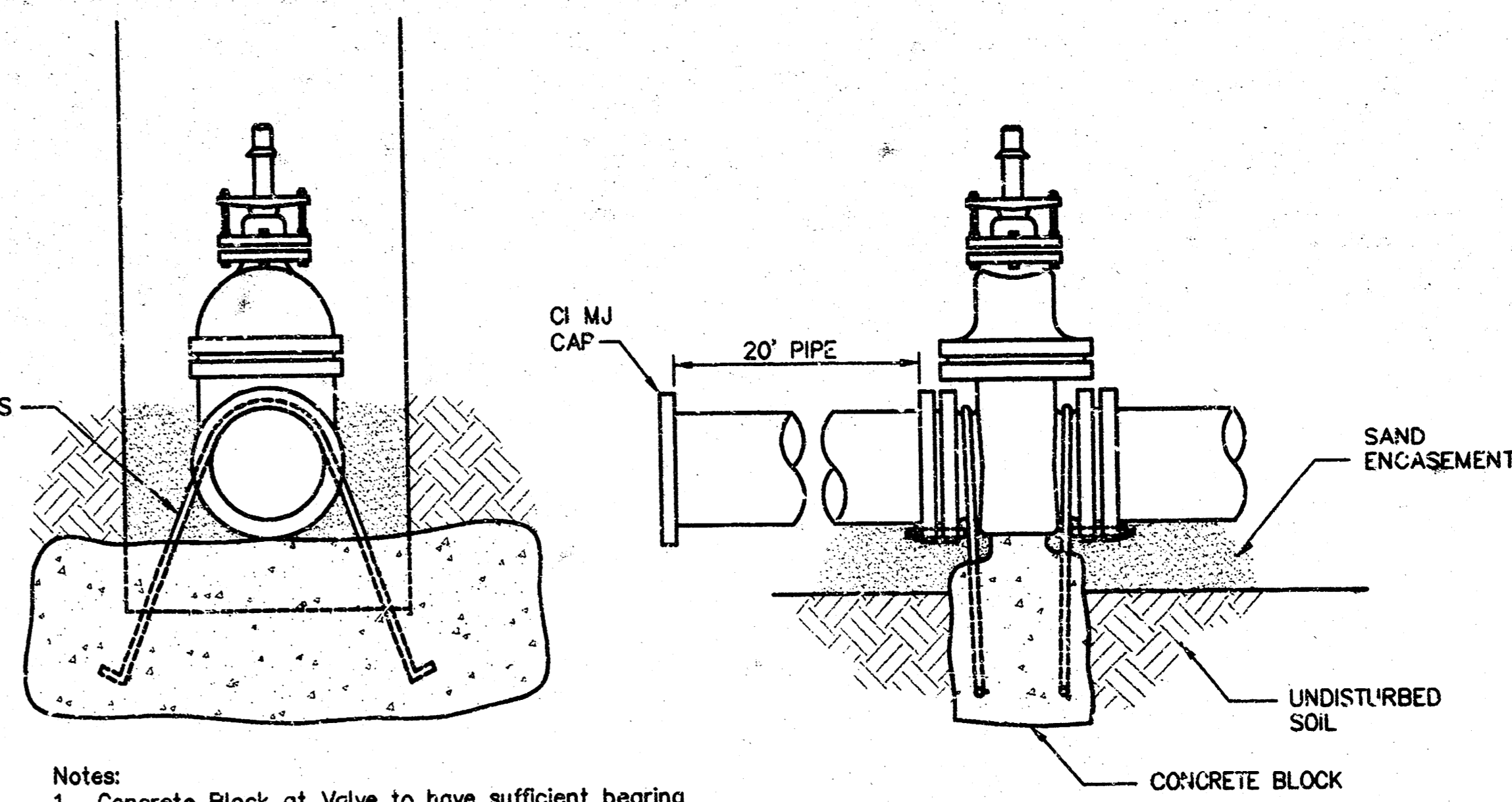
Conductive type pipe locator/tracer wire shall be installed to locate Polyvinyl Chloride (PVC), or any nonmetallic, waterline pipes. The wire shall be installed 6 inches above the proposed pipe, and shall extend the entire length of the proposed pipe. In directional drilling applications, the wire shall be taped to the top of the waterline and pulled with the pipe. Split-bolt connectors or crimpers shall be used at splice locations. Electrical tape shall cover all splices so no bare wire is exposed. Test stations shall be installed adjacent to all fire hydrants along the proposed alignment. At each test station, the tracer wire shall be connected to a 1 lb. zinc or magnesium anode. This connection shall be made using a "twist-on" wire connector which shall splice the blue tracer wire from each direction to a black wire leading to the anode. The anode shall be installed a minimum of 5 feet away from the water line. Anodes shall also be attached to the tracer wire at both the beginning and the end of the proposed improvement. A typical layout of the tracer wire and test station is provided in the above figure.

WIRE: The tracer wire shall be blue No. 12 THHN kneeled soft copper wire with thermal plastic insulation. The insulation shall be heat, oil, and gasoline resistant as manufactured by Temple Electrical or approved equal.

TEST STATIONS: The test station shall be a 1 inch conduit style test station as manufactured by COTT Manufacturing Company or approved equal and shall be provided with a removable solid cover with no leads extending from it. The test station shall be attached to a 1 inch conduit (min. length of 36 inches). Both the conduit and the test station shall be coated with weather resistant blue enamel paint. The tracer wire and the anode wire connection shall be installed to allow 10 inches of wire within the test box. Test stations shall be provided at each fire hydrant (a max. distance of 3 inches). The location of all test stations shall be approved by the construction engineer, recorded, and shown in the as-built drawings.

ANODES: The anodes shall be 1 lb. bare zinc or magnesium. The anodes shall be buried a minimum of 5 feet deep at each test station. The anodes shall be connected to black No. 12 THHN kneeled soft copper wire which shall be extended to the test station. Adequate length of the insulated black wire shall be attached to each anode to provide 10 inches within the test box.

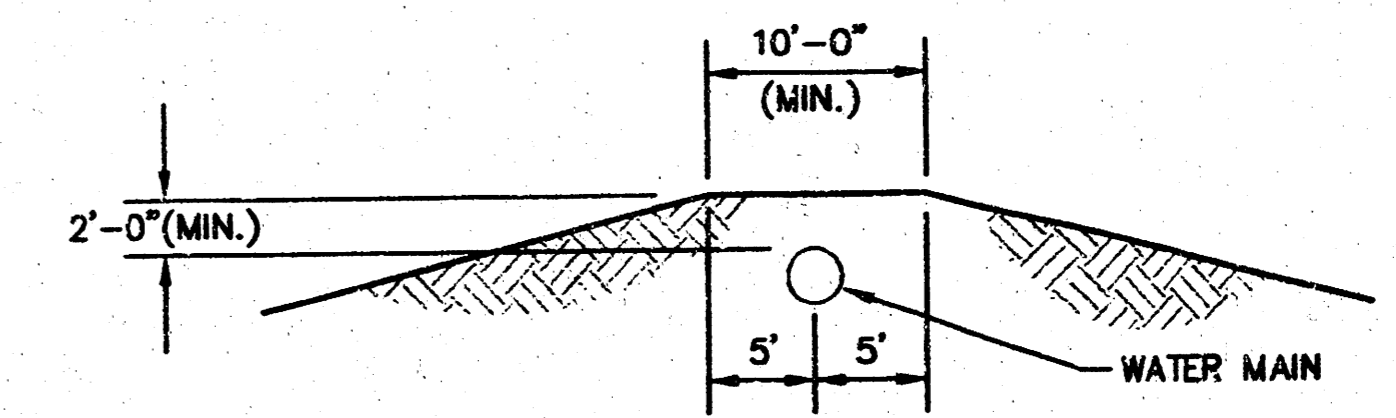
- MATERIALS LIST**
 1-MJ ANCHOR TEE (12" x 6")
 1-6" MJ GATE VALVE
 1-6" VALVE BOX
 6"D.I.C. S.J. PIPE (LENGTH VARIABLE)
 1-FIRE HYDRANT
 CONCRETE BLOCKING (AS NEEDED)



| THRUST AT VALVES | |
|------------------|--------------------|
| VALVE | THRUST AT 150 #/sq |
| 4" | 1809 lbs. |
| 6" | 4245 lbs. |
| 8" | 7540 lbs. |
| 12" | 16965 lbs. |

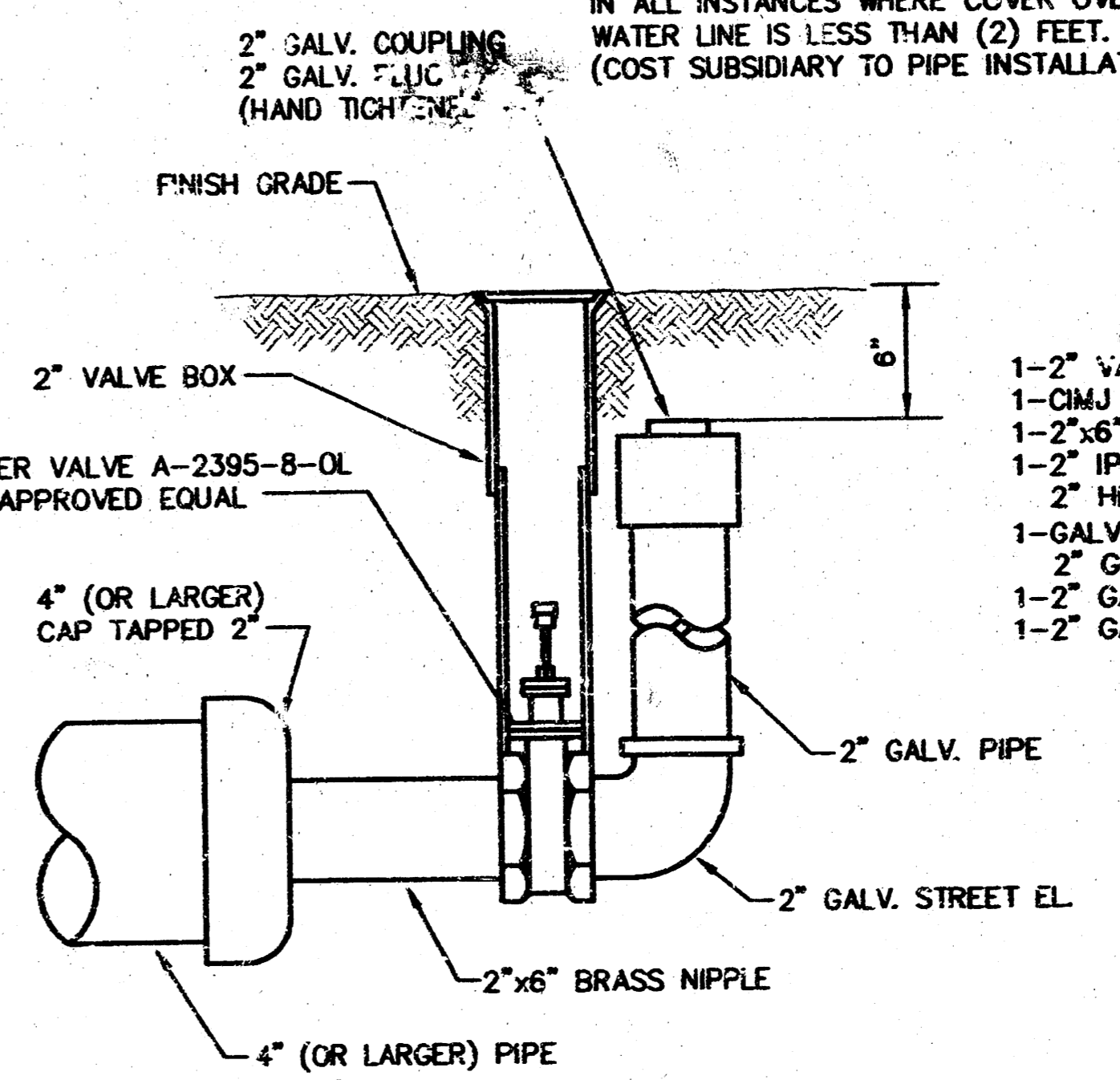
- Notes:**
- Concrete Block at Valve to have sufficient bearing in undisturbed soil to prevent thrust movement as shown in table at right. Field engineer to determine thrust loading of undisturbed soil and final size of thrust block.
 - The thrust block shall be constructed such that bolts, nuts, and other MJ accessories are kept clear of concrete.
 - Valve block to be included in bid item of Concrete for thrust blocks.
 - All valves at dead ends and at other locations as called out on the plans shall be blocked as shown here.

ANCHORED VALVE ASSEMBLY, SPECIAL



PROTECTIVE FILL DETAIL

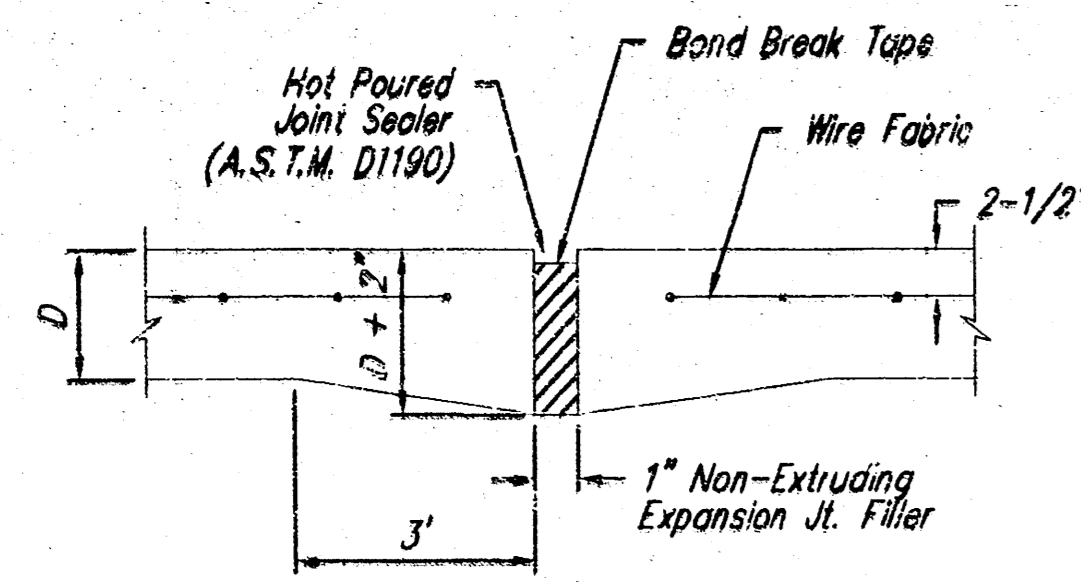
MINIMUM PROTECTIVE FILL SHALL BE PROVIDED IN ALL INSTANCES WHERE COVER OVER THE PROP. WATER LINE IS LESS THAN (2) FEET. (COST SUBSIDIARY TO PIPE INSTALLATION)



2" BLOWOFF ASSEMBLY

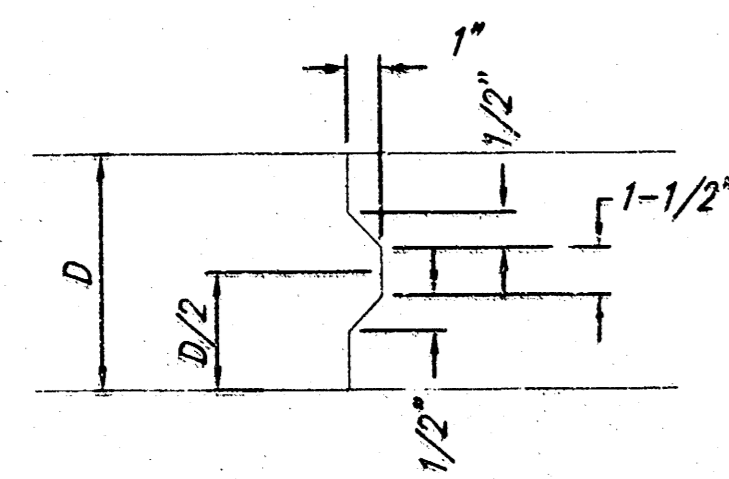
- MATERIALS LIST**
 1-2" VALVE BOX
 1-CIMJ CAP
 1-2"x6" BRASS NIPPLE
 1-2" IPT MUELLER VALVE A-2395-8-OL
 2" HEAD OR APPROVED EQUAL
 1-GALV. STREET EL.
 2" GALV. PIPE (AS REQUIRED)
 1-2" GALV. COUPLING
 1-2" GALV. PLUG (HAND TIGHTENED)

| | | | | | | | |
|------------------------------------|-----------------|----------------|----------------|-----------------|--|-------------------------------------|--------------------|
| PROJECT NUMBER 448-85368 | | | | AM NO. 58112 | GOLF PARK WEST ADDITION Water Details Wichita, KS | SHEET 5 OF 8 | REVISED 2/11/99 |
| DESIGN C.O.W. | DRAWN C.O.W. | FILE wt0612 | DATE 2/1/99 | SCALE 1"=20' | | | |

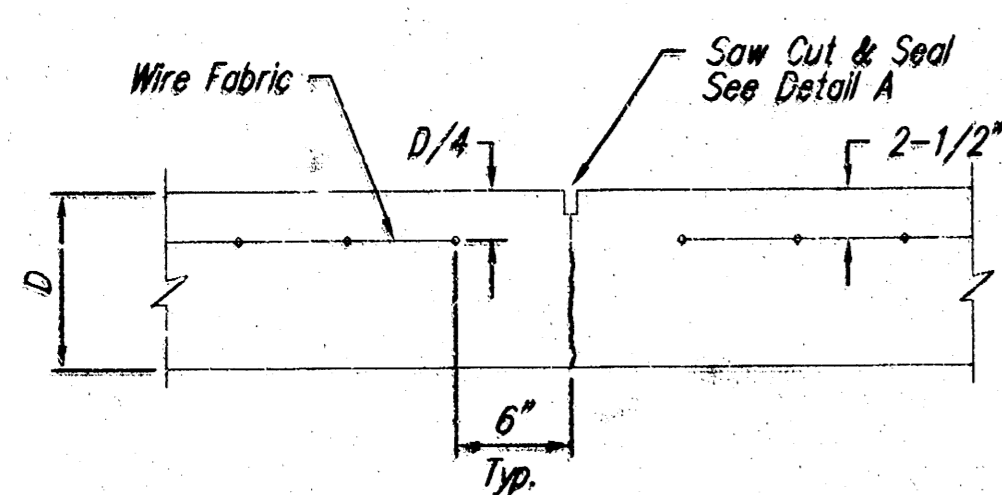


EXPANSION JOINT

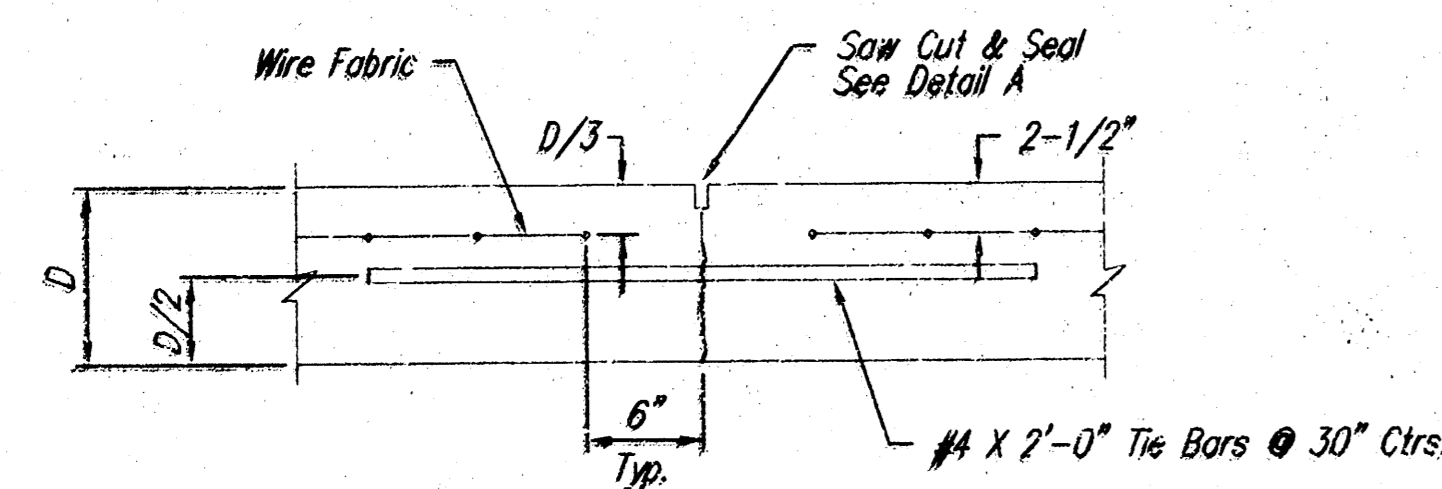
NOTE: Extra Thickness to be Subsidiary to Price of Square Yards Pavement



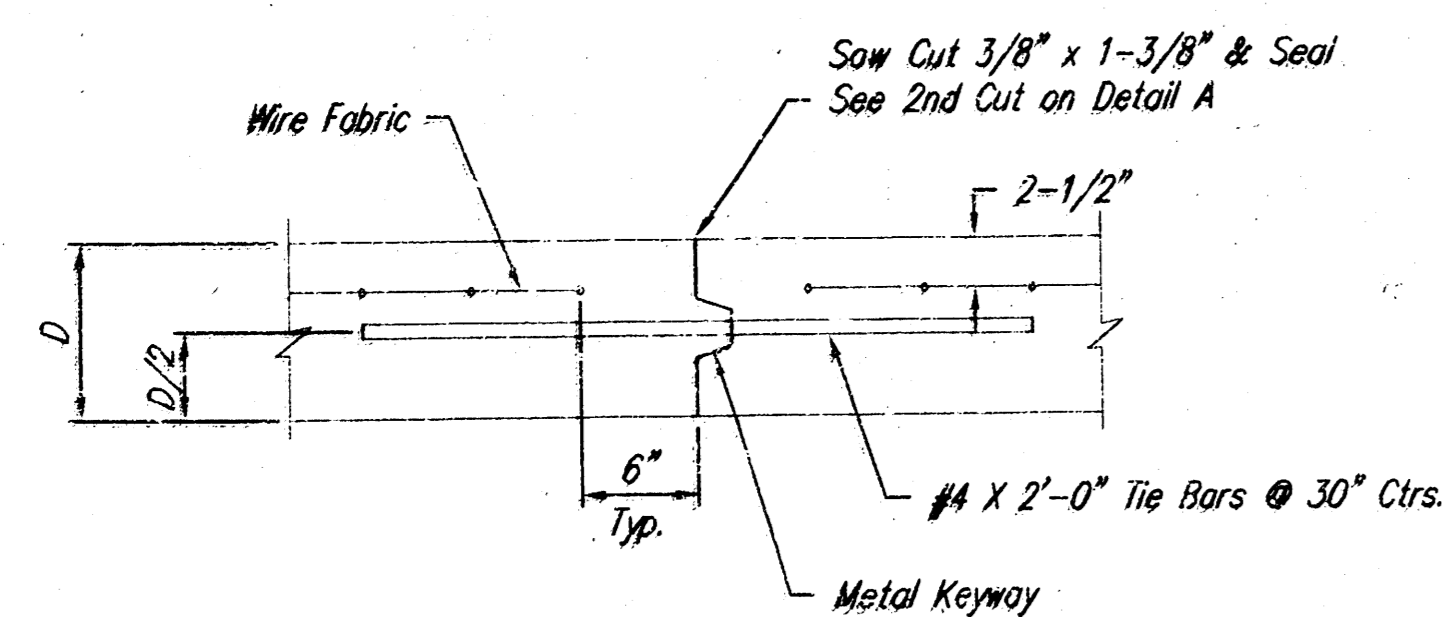
KEYWAY DETAIL



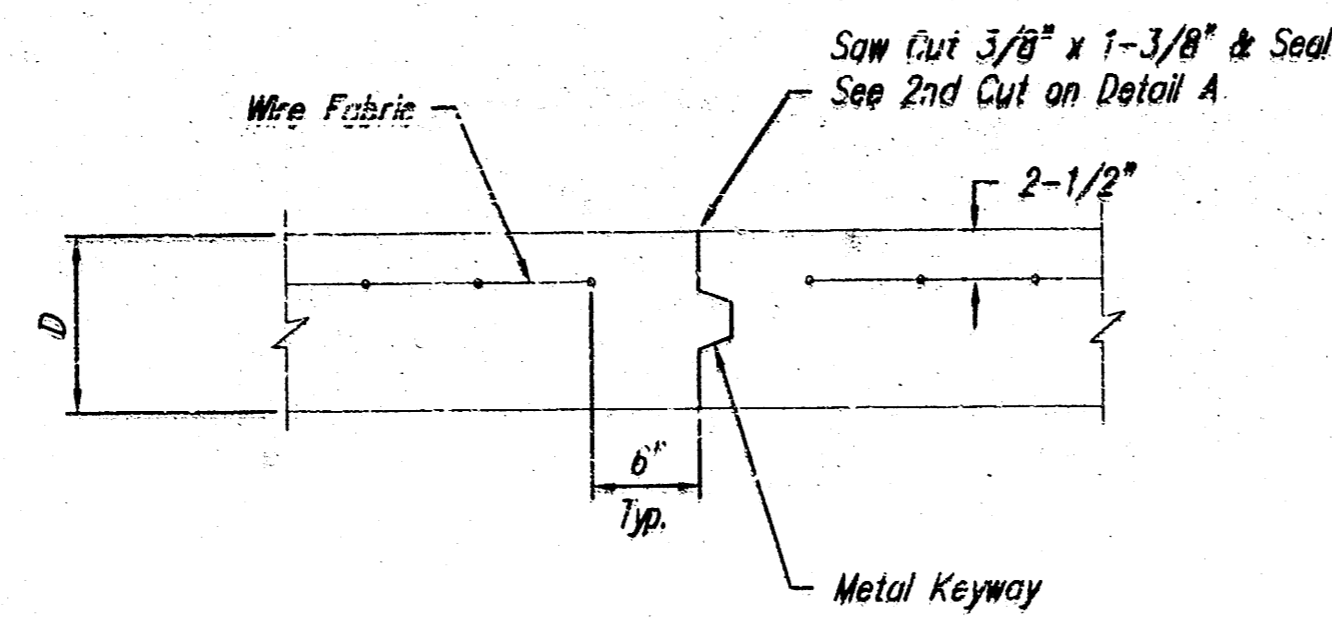
CONTRACTION JOINT DETAIL (C.J.)



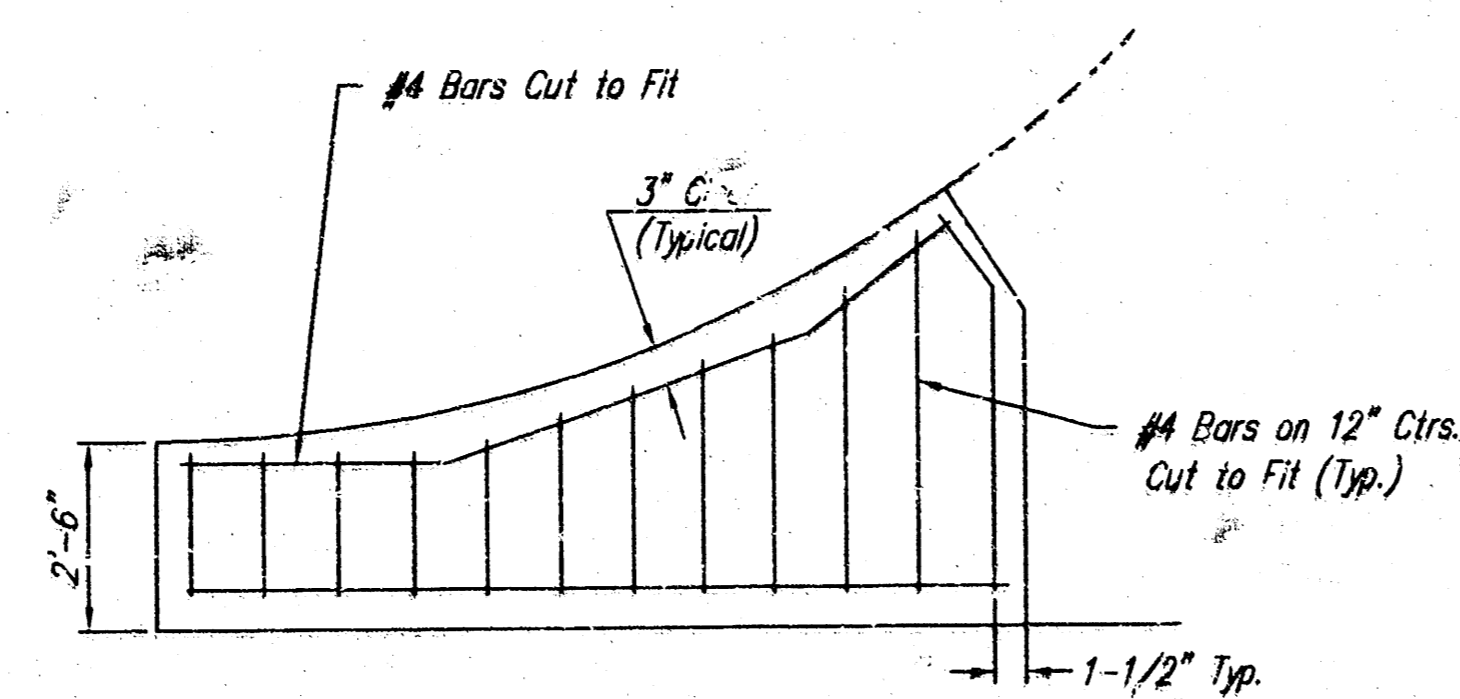
LONGITUDINAL JOINT DETAIL (L.J.)



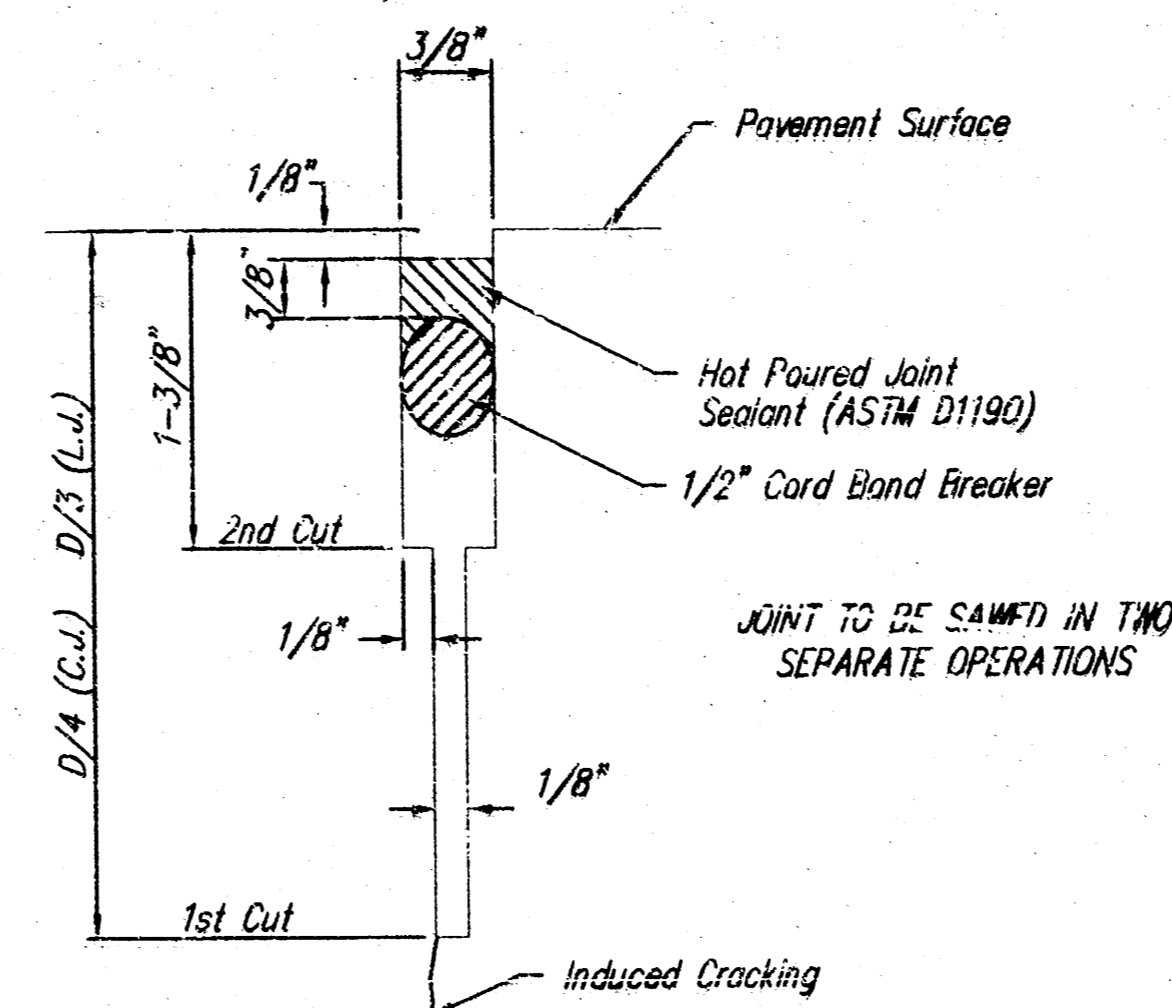
OPTIONAL LONGITUDINAL JOINT DETAIL (L.J.)



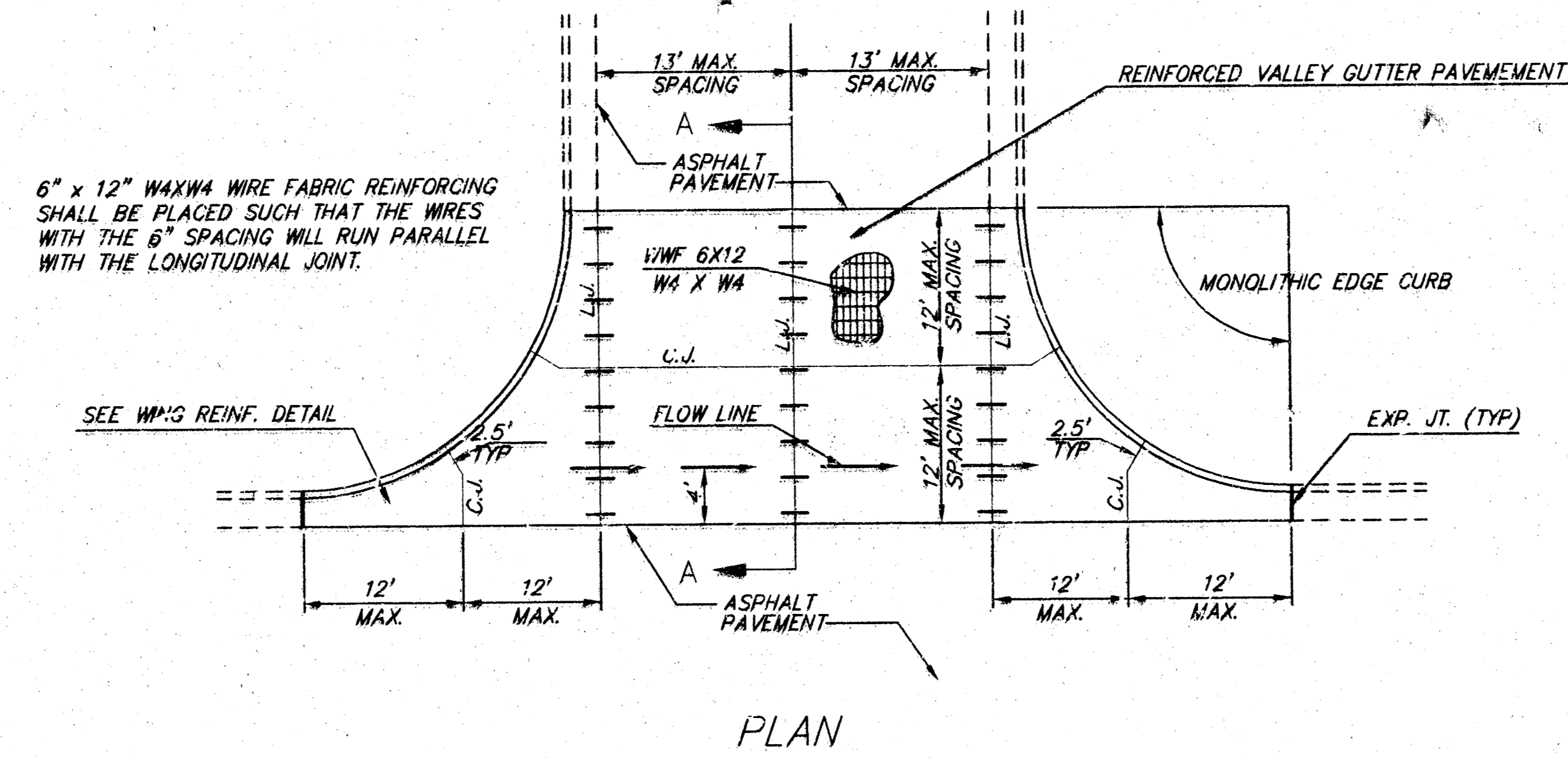
OPTIONAL CONTRACTION JOINT



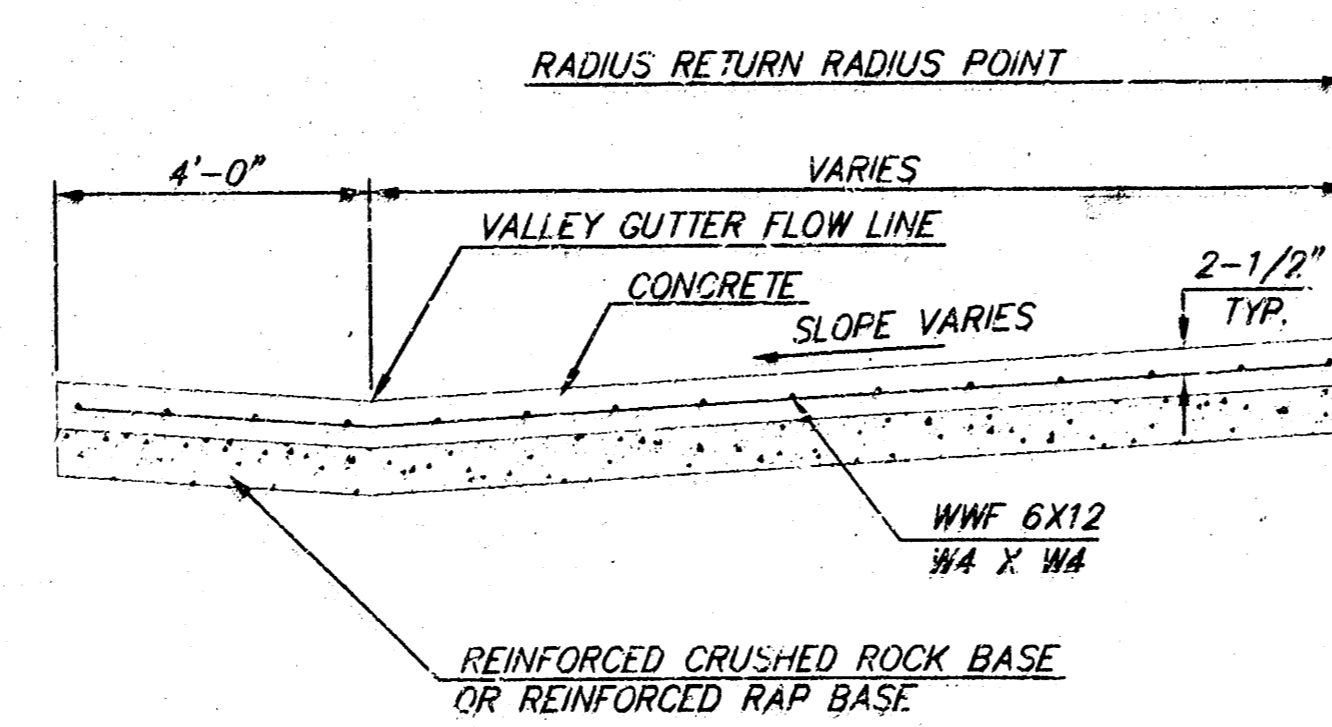
WING REINFORCING DETAIL



SAW JOINT DETAIL

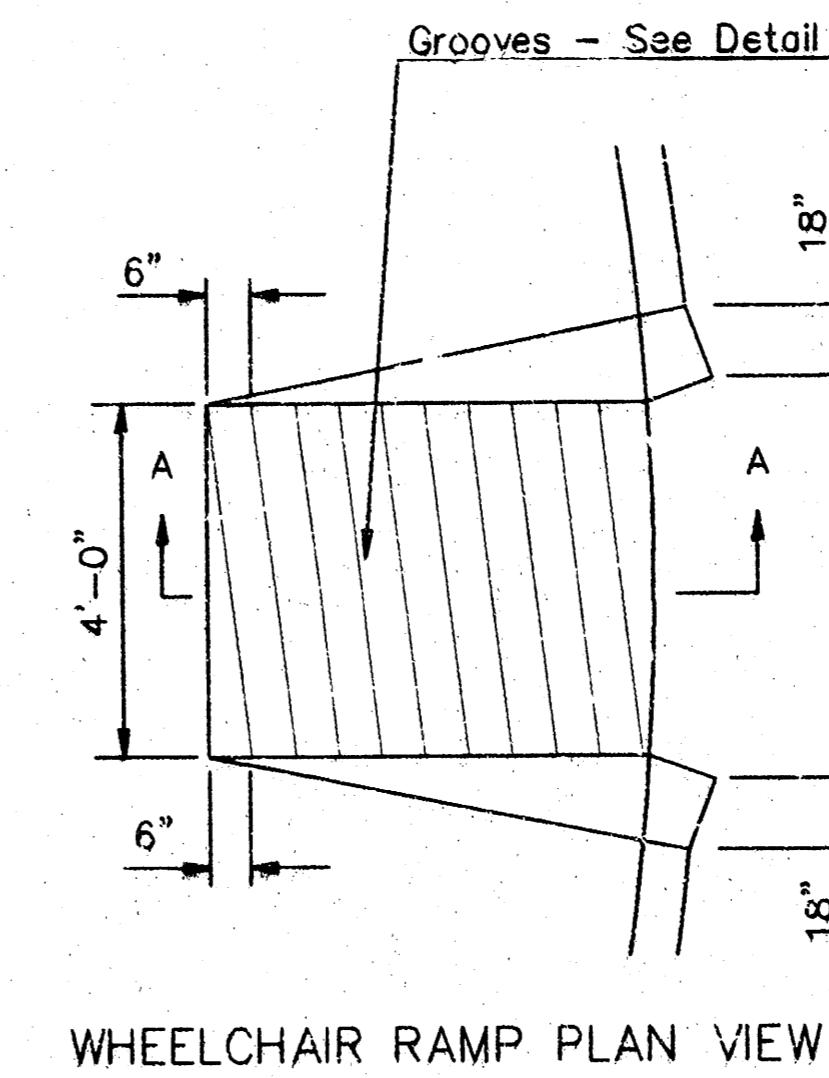


PLAN

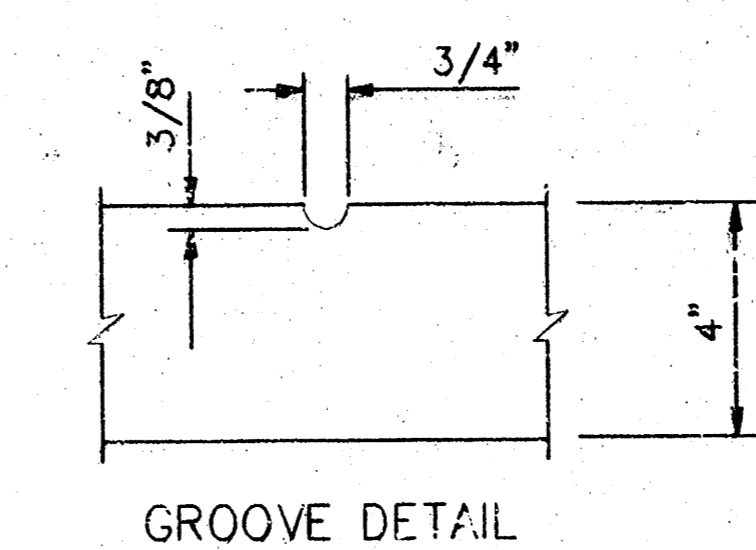


SECTION A-A

REINFORCED VALLEY GUTTER DETAIL

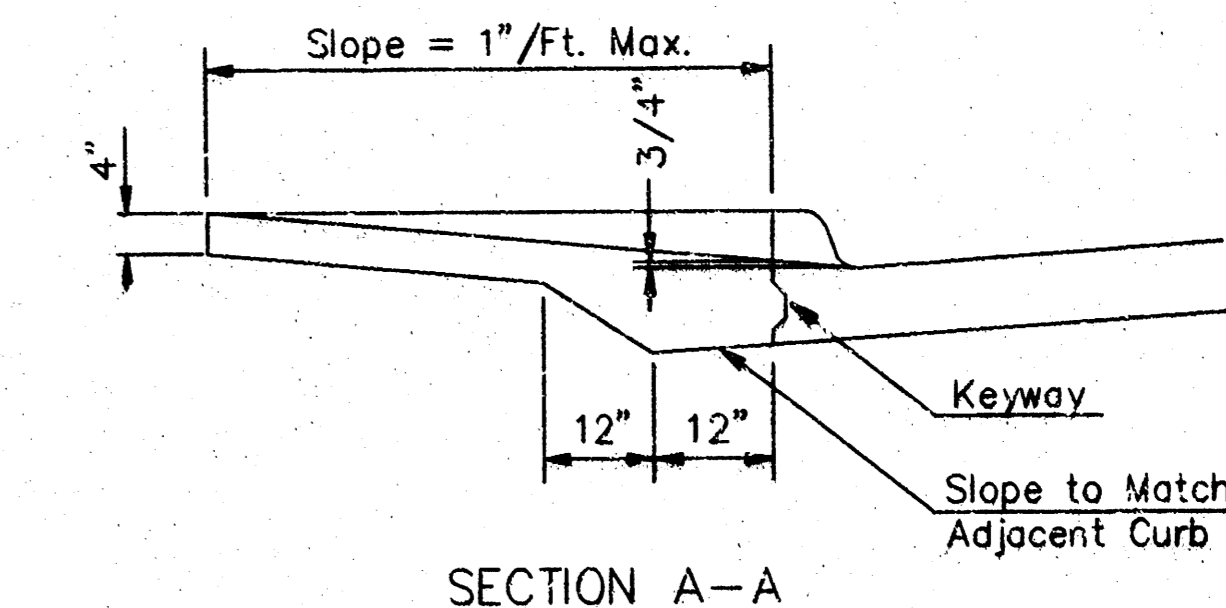


WHEELCHAIR RAMP PLAN VIEW

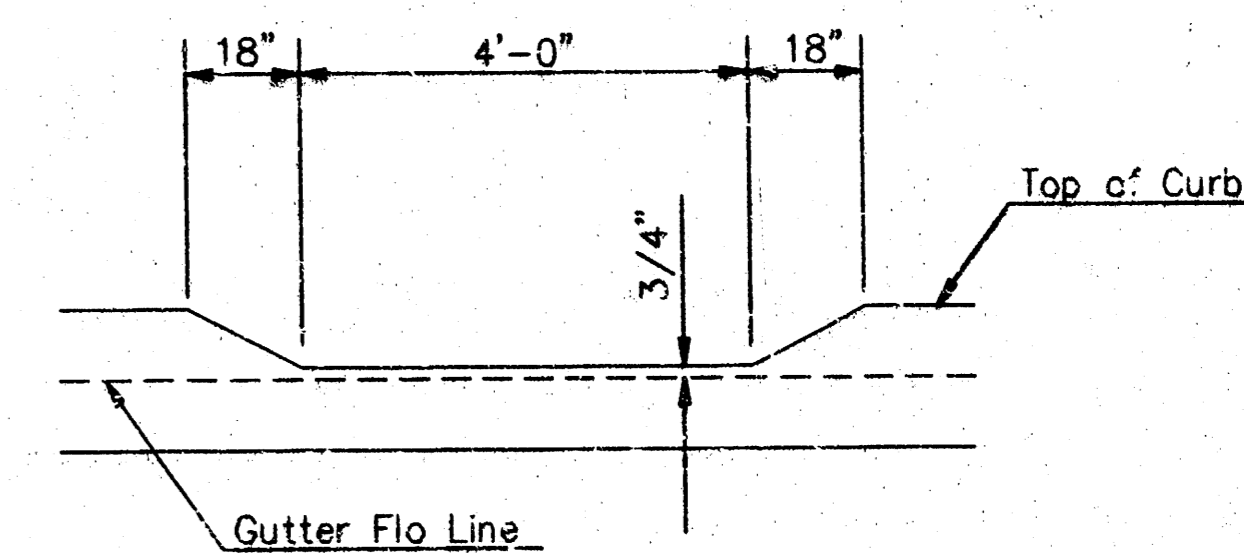


GROOVE DETAIL

WHEELCHAIR RAMP DETAIL



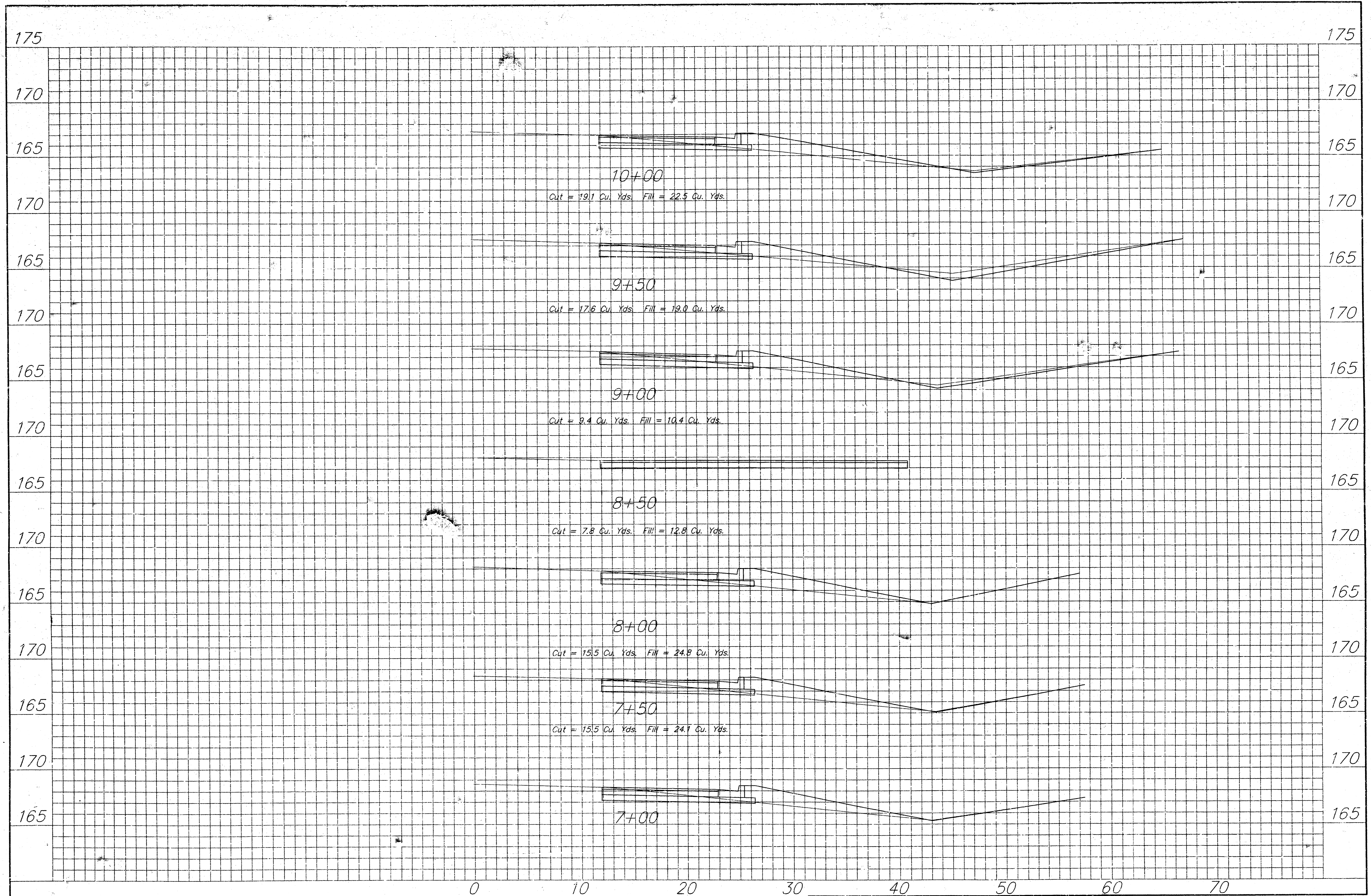
SECTION A-A



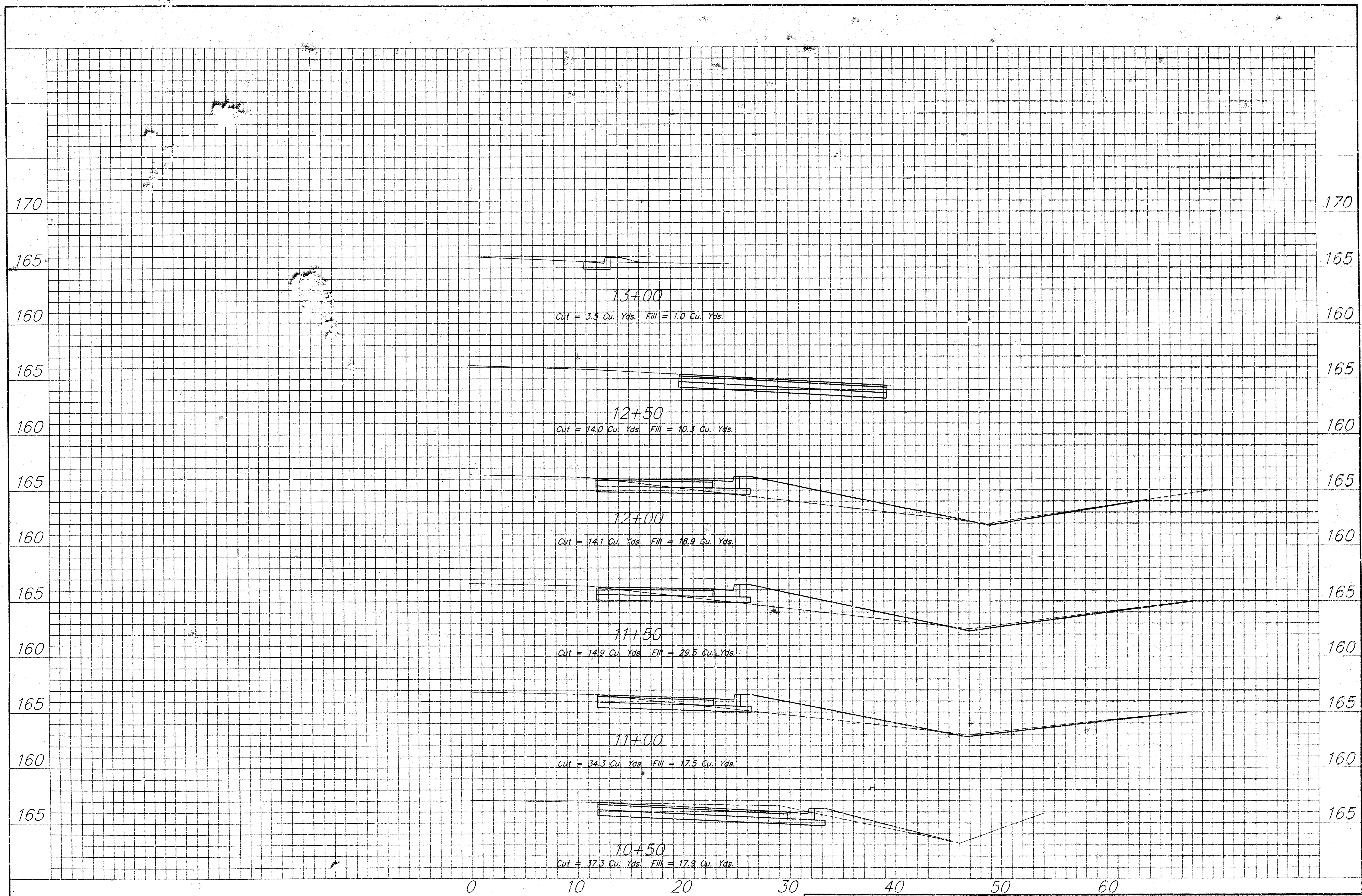
DEPRESSED CURB DETAIL

| | | |
|-------------------------------------|--------------------------------|----------------------|
| | VALLEY GUTTER DETAILS | |
| | WHEELCHAIR RAMP DETAILS | |
| M. E. LINDEBAK P.E. - CITY ENGINEER | | |
| PROJECT NUMBER 472-85061 | | INDEX CODE 765552 |
| DATE MAR 96 | | |
| SHEET 6 OF 8 | | |

VALYGUT.DWG



| | | | | | | | |
|--|------------------------------------|-------------|--------------|------------------|--|-------------------------------------|-----------|
| | PROJECT NUMBER 472-83031 | | | AM. NO. 98112 | GOLF PARK WEST ADDITION Cross Sections Wichita, KS | SHEET 7 OF 8 | REVISIONS |
| | DESIGN dk | DRAWN my | FILE ksec | DATE 2/10/99 | | | |



| | | | | | | | |
|--|-----------------------------|-------------|--------------|-----------------|-----------------|---|------------|
| | PROJECT NUMBER 472-83061 | | | | AM NO. 98112 | GOLF PARK WEST ADDITION Cross Sections Wichita, KS | SHEET 8 |
| | DESIGN dk | DRAWN my | FILE jsec | DATE 2/10/99 | SCALE 1"=4' | | OF 8 |

18-02-05-15