

SHEET NO.	TOTAL SHEETS
1	4

CITY OF WICHITA, KANSAS  
 MICHAEL E. LINDEBAK, P.E., CITY ENGINEER  
**STREET IMPROVEMENTS**

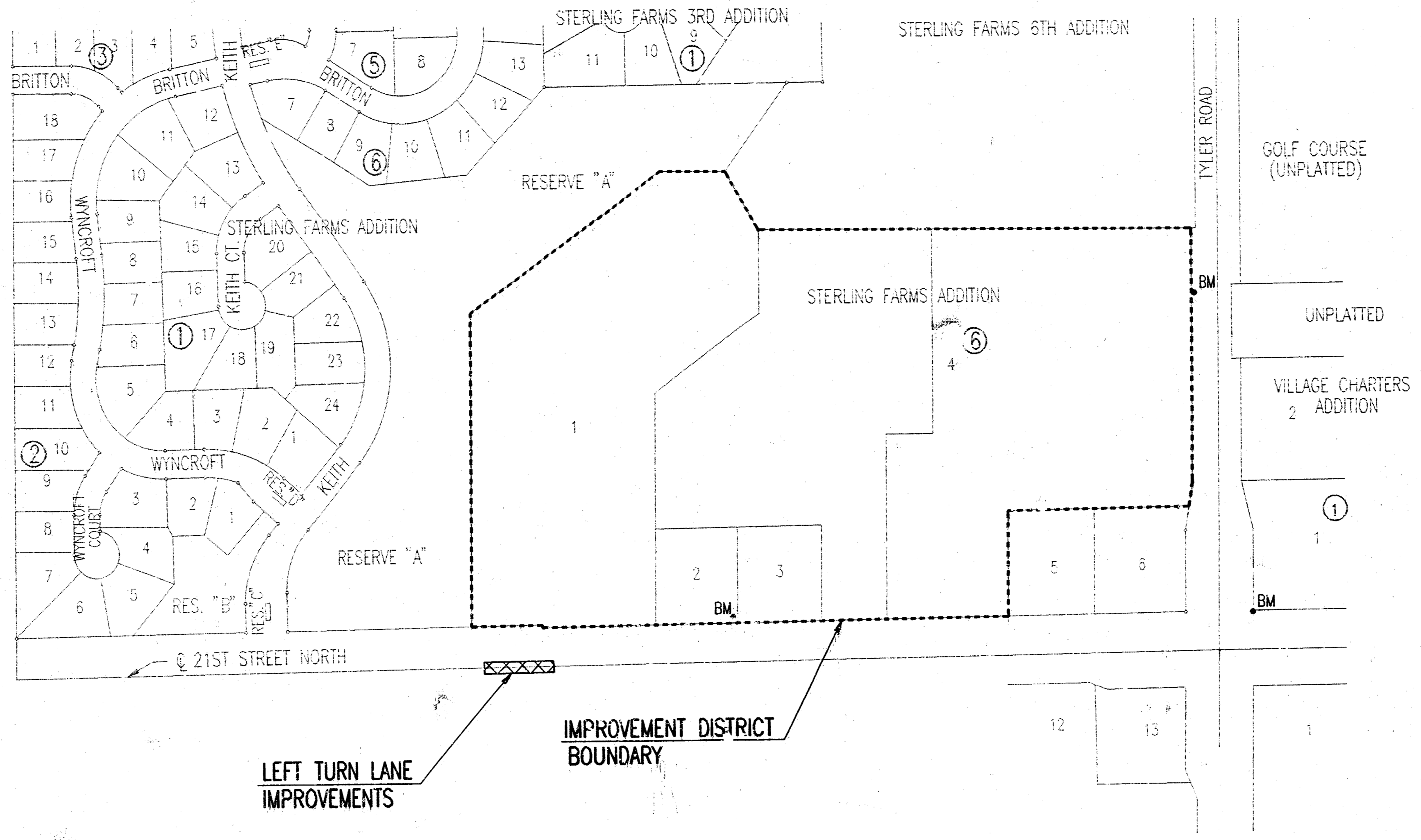
LEFT TURN LANE - WEST LINE LOT 1 TO THE WEST LINE LOT 5, BLOCK 6. (PART 2)

FOR  
**STERLING FARMS**

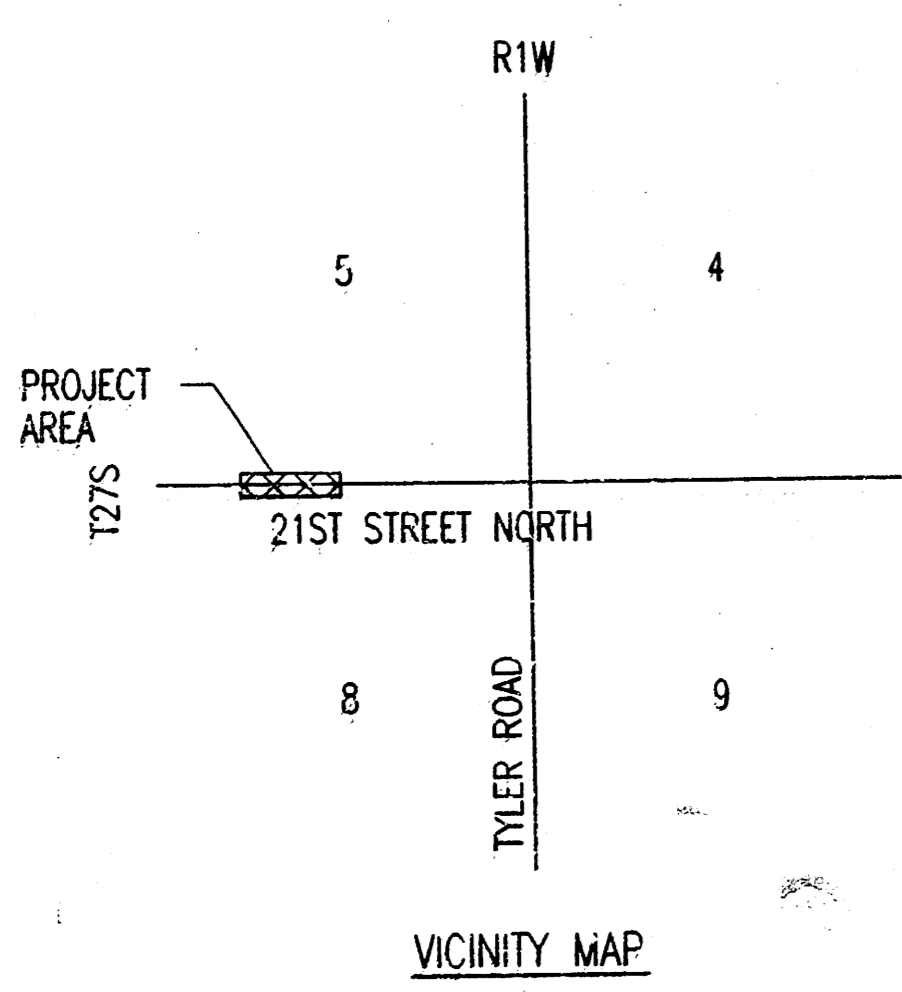
CITY OF WICHITA PROJECT NO. 472-76-245-81892-000-000-001  
 INDEX NO. 762591

- INDEX OF SHEETS**
1. TITLE SHEET
  2. TYPICAL SECTIONS
  3. LEFT TURN LANE
  4. MARKING PLAN

- PROJECT SURVEY CONTROL**
- B.M. - CITY OF WICHITA DISC AT NORTHEAST CORNER 21ST STREET NORTH AND TYLER ROAD. ELEV.=170.90
  - B.M. - RAILROAD SPIKE IN POWER POLE APPROX. 835' NORTH OF & 21ST STREET NORTH. ELEV.=166.65
  - B.M. - RAILROAD SPIKE IN POWER POLE, 10' WEST OF S.E. CORNER, LOT 2, BLOCK 6, STERLING FARMS. ELEV.=164.88



PROJECT LENGTH = 177 LIN. FT.



**GENERAL NOTES**

UNDERGROUND UTILITY SERVICE LINES AND OVERHEAD UTILITY POLE LINES ARE TO BE ADJUSTED AS NECESSARY BY OTHERS PRIOR TO CONSTRUCTION UNLESS THE PLANS SPECIFICALLY CALL FOR THEIR ADJUSTMENT BY THE CONTRACTOR. EXISTING UTILITIES AND THEIR LOCATION, AS SHOWN ON THE PLANS, REPRESENT THE BEST INFORMATION OBTAINABLE FOR DESIGN. LOCATION INFORMATION HAS BEEN OBTAINED FROM THE VARIOUS UTILITY COMPANIES AND IS EITHER FROM COMPANY RECORD DRAWINGS OR COMPANY PROVIDED FIELD LOCATIONS. THE CONTRACTOR WILL BE REQUIRED TO WORK AROUND EXISTING UTILITIES WITHIN THE RIGHT-OF-WAY WHICH DO NOT CONFLICT WITH PROPOSED CONSTRUCTION.

RUBBLE FROM THE REMOVAL OF MISCELLANEOUS STRUCTURES SHALL BE DISPOSED OF ON SITES TO BE PROVIDED BY THE CONTRACTOR AND APPROVED AS NOTED BELOW.

ALL DISPOSAL SITES MUST BE APPROVED BY THE KANSAS DEPARTMENT OF HEALTH AND ENVIRONMENT. MATERIAL EITHER STOCKPILED OR DISPOSED OF IN A FLOOD PLAIN WOULD REQUIRE A KANSAS STATE BOARD OF AGRICULTURE PERMIT. ANY MATERIAL DUMPED IN WATERS OF THE UNITED STATES OR WETLANDS IS SUBJECT TO U.S. CORPS OF ENGINEERS PERMITTING REGULATIONS. ANY MATERIAL BURIED OR STOCKPILED BEYOND APPROVED CONSTRUCTION LIMITS WOULD REQUIRE ADDITIONAL ARCHEOLOGICAL INVESTIGATIONS UNLESS BURIED IN A PREVIOUSLY APPROVED BORROW LOCATION.

CONTRACTOR SHALL SATISFY HIMSELF OF SURFACE AND SUBSURFACE CONDITIONS PRIOR TO BIDDING.

CONTRACTOR SHALL PROVIDE A MINIMUM FORTY-EIGHT (48) HOUR ADVANCE NOTICE (EXCLUDING WEEKENDS AND HOLIDAYS) PRIOR TO BEGINNING ANY EXCAVATION, TO KANSAS ONE-CALL SYSTEM, A UTILITY LOCATION SERVICE, AT (316) 687-2470 TO REQUEST THE FOLLOWING UTILITY COMPANIES TO LOCATE ALL EXISTING LINES WITHIN THE PROJECT AREA: K.G.S. GAS, PEOPLES NATURAL GAS, K.G.E. ELECTRIC, SOUTHWESTERN BELL TELEPHONE, MULTIMEDIA CABLEVISION, CITY OF WICHITA SEWER MAINTENANCE AND CITY OF WICHITA WATER DEPARTMENT.

THE CONTRACTOR SHALL BE RESPONSIBLE FOR PRESERVING PROPERTY IRONS. THE CONTRACTOR WILL BE REQUIRED TO RE-ESTABLISH ANY PROPERTY IRONS WHICH ARE DAMAGED OR DESTROYED BY HIS CONSTRUCTION OPERATIONS. SUCH IRONS SHALL BE RE-ESTABLISHED BY A LICENSED LAND SURVEYOR IN ACCORDANCE WITH STATE LAWS.

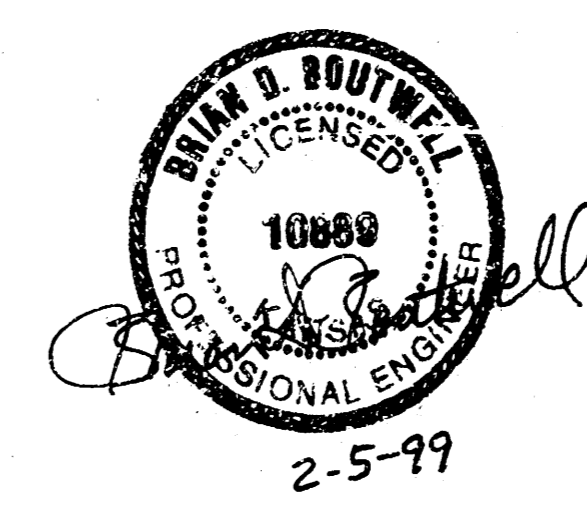
THE WATER DEPARTMENT SHALL FIELD LOCATE WATER VALVES ONE TIME DURING CONSTRUCTION WHEN REQUESTED BY THE CONTRACTOR. IT SHALL BE THE CONTRACTOR'S RESPONSIBILITY TO PRESERVE SUCH FIELD LOCATIONS DURING THE CONSTRUCTION PROCESS. WATER VALVES, WATER VALVE BOXES OR FIRE HYDRANTS DAMAGED DURING CONSTRUCTION SHALL BE REPAIRED BY THE CONTRACTOR AT HIS OWN EXPENSE.

CONTRACTOR SHALL MAINTAIN ONE LANE OF TRAFFIC EACH WAY AT ALL TIMES. CONTRACTOR SHALL ERECT AND MAINTAIN TRAFFIC CONTROL BARRICADES, SIGNS, LIGHTS AND OTHER PROTECTIVE DEVICES IN ACCORDANCE WITH THE MANUAL ON UNIFORM TRAFFIC CONTROL DEVICES (MUTCD).

**FEBRUARY 1999**

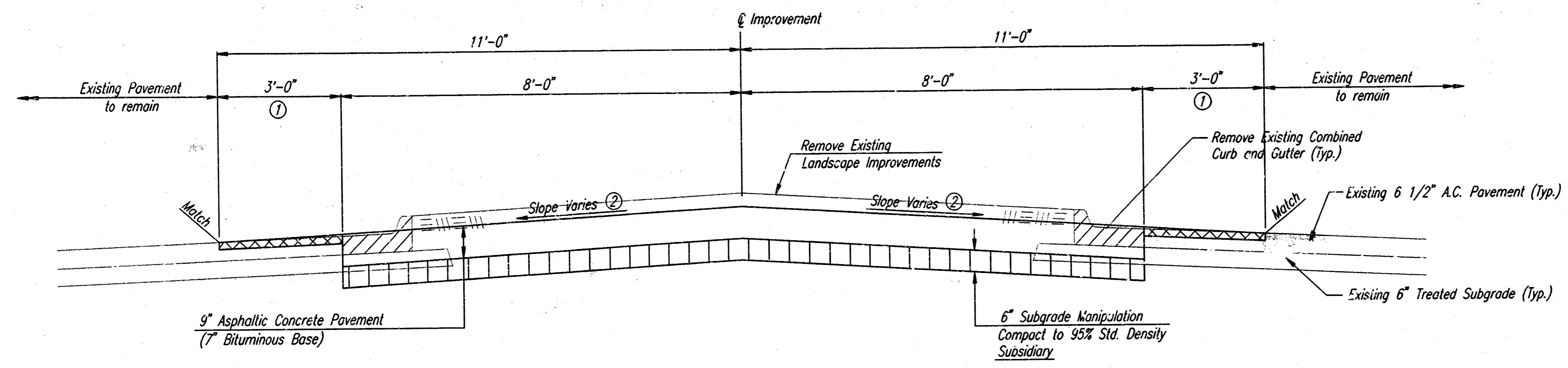
PLANS PREPARED BY

PROFESSIONAL ENGINEERING CONSULTANTS, P.A.  
 ENGINEERS  
 WICHITA, KANSAS



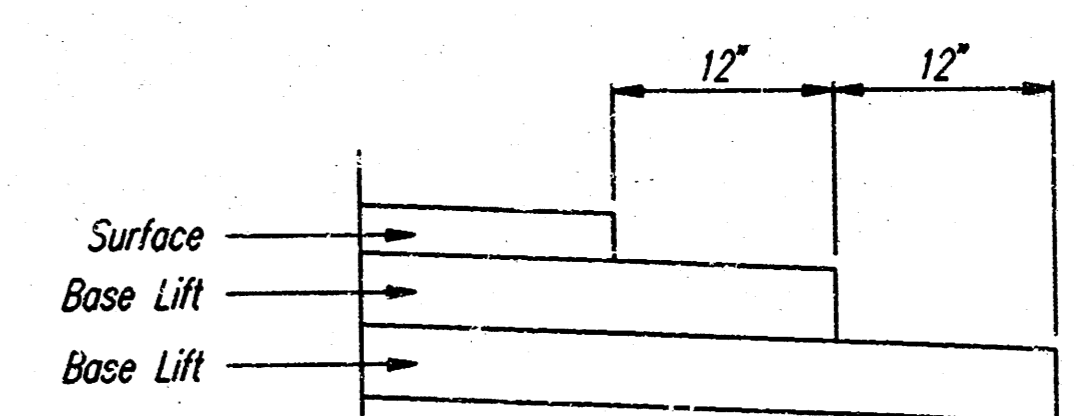
DRAWING NO. 0789-001 SCALE: 1/4"=100' 02-05-1999 08:57:43 am  
 C:\WORK\31720-2\STREET\12-05-99\31720-2.DWG

PROJECT NO.	SHEET NO.	TOTAL SHEETS
472-76-245-81892-000-001	2	4



**TYPICAL SECTION**  
Sta. 1034+39 to Sta. 1035+89E

- ① Asphalt Cold Milling (2" Nominal). Saw Cut where necessary to provide Vertical Plane and/or Neal Line as directed by the Engineer. Saw Cut shall be subsidiary to Milling.
- ② 3/16"/ft. minimum slope

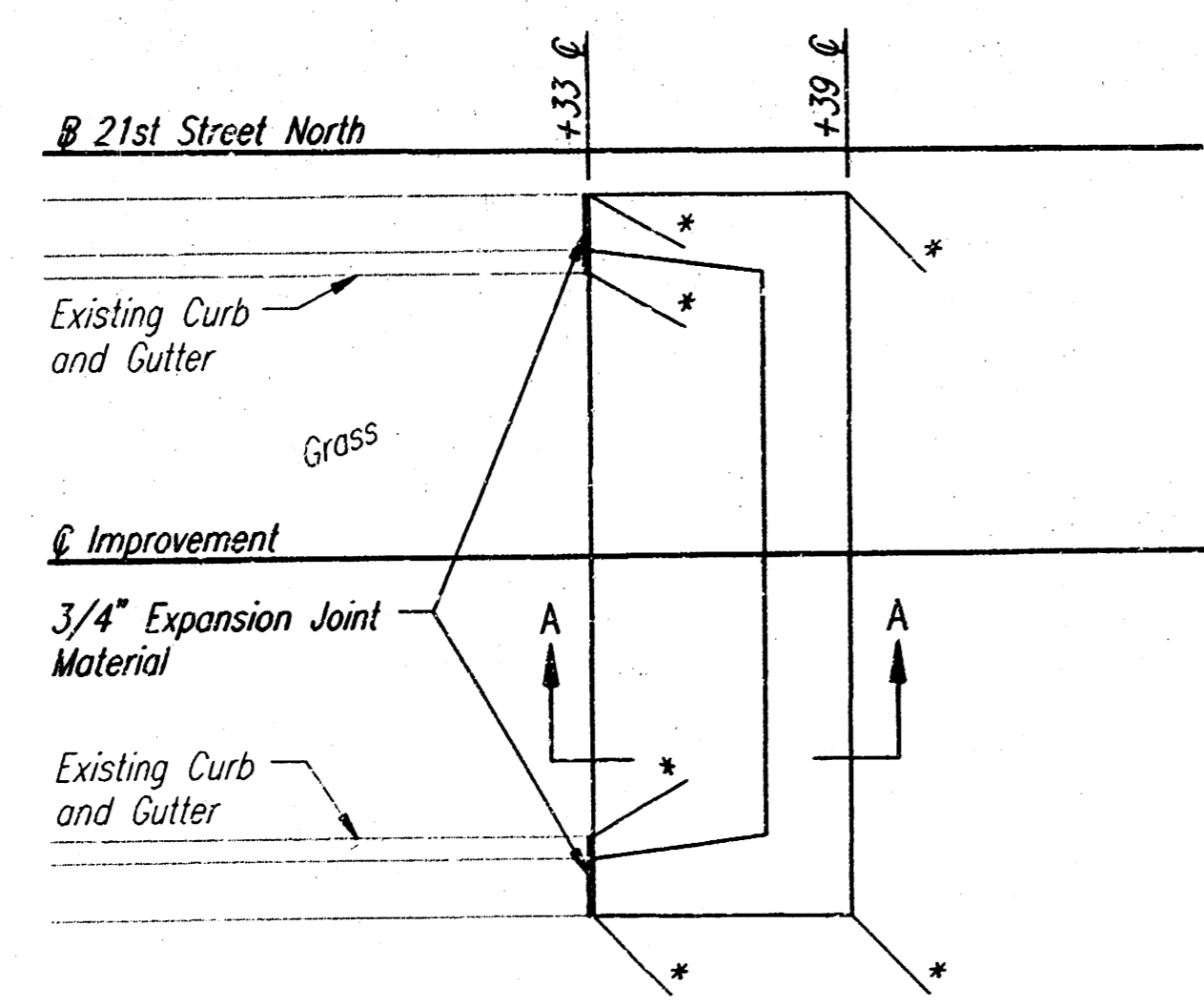


**TRANSVERSE CONSTRUCTION JOINTS**

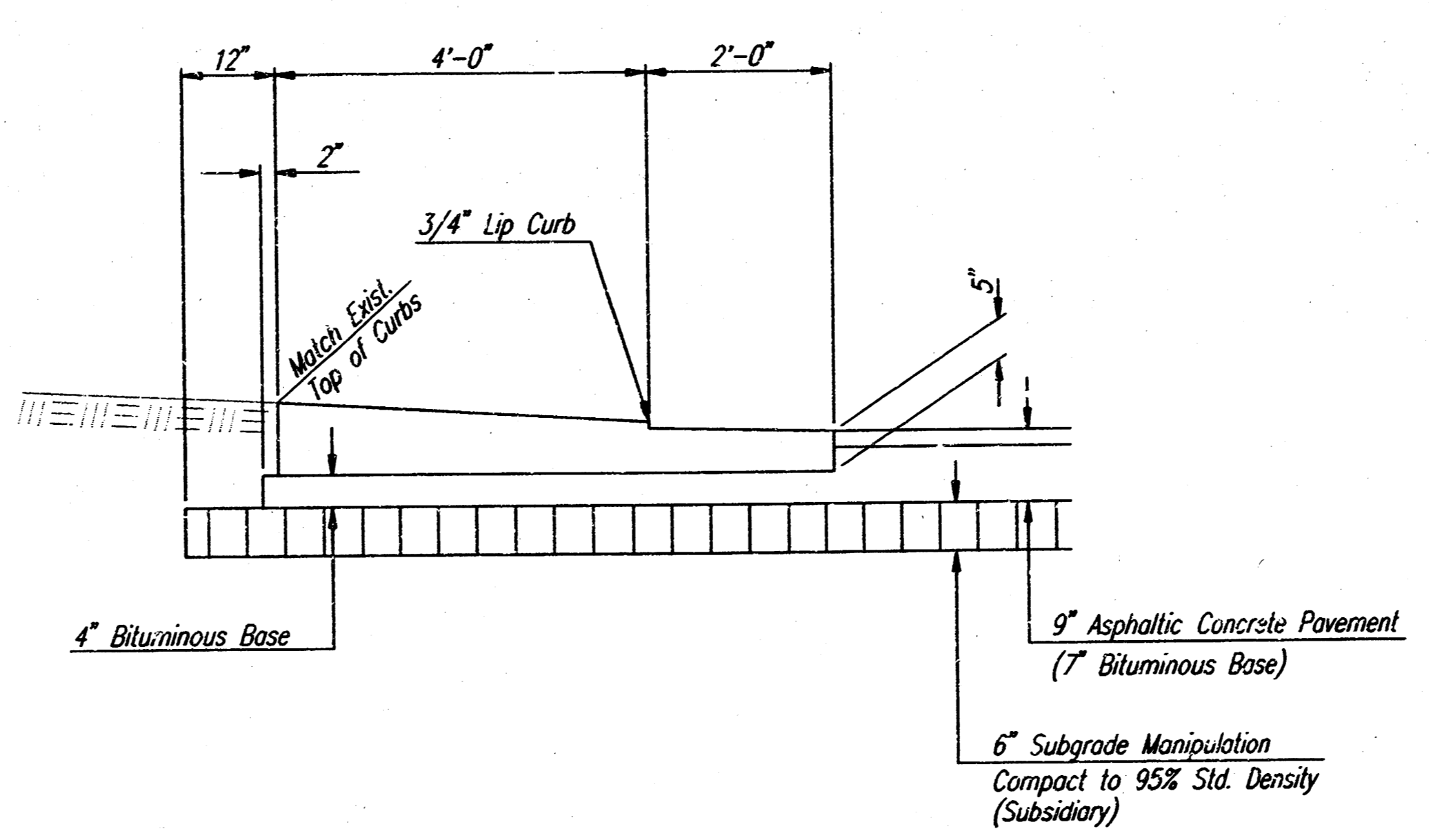
TRANSVERSE CONSTRUCTION JOINTS SHALL BE CONSTRUCTED IN FLEXIBLE BASE PAVEMENTS AT LOCATIONS WHERE PAVEMENT JOINS EXISTING FLEXIBLE BASE PAVEMENT AS SHOWN BY THE DETAIL. ALL COSTS ASSOCIATED WITH THE CONSTRUCTION OF THE TRANSVERSE JOINT SHALL BE INCLUDED IN THE BID PRICE FOR SQUARE YARDS 9\"/>

**GENERAL NOTES**

A TACK COAT OF EMULSIFIED ASPHALT (SC-1H OR CSS-1H) SHALL BE APPLIED AT AN APPROXIMATE RATE OF 0.05 GALLONS PER SQUARE YARD BETWEEN EACH LIFT OF ASPHALTIC MATERIAL.  
 BITUMINOUS BASE AND ASPHALTIC CONCRETE WEARING SURFACE SHALL BE PLACED WITH A LAYDOWN MACHINE HAVING AUTOMATIC CONTROLS FOR LINE AND GRADE.  
 CONSTRUCTION JOINTS IN EACH LIFT SHALL BE STAGGERED A MINIMUM DISTANCE OF ONE (1) FOOT FROM JOINTS IN PRECEDING LIFTS AND PLACED SO THAT A JOINT WILL BE CONSTRUCTED ON THE CENTERLINE OF THE TOP LIFT.  
 PRIOR TO PLACEMENT OF ASPHALT, CONTRACTOR SHALL SCARIFY 6\"/>



SCALE: 1"=5'



NOTE: CONCRETE MEDIAN NOSE TO BE BID AND PAID FOR AS A LUMP SUM FOR "MONOLITHIC CONCRETE MEDIAN NOSE" WHICH SHALL BE FULL COMPENSATION FOR ALL CONCRETE, MATERIALS, EQUIPMENT, TOOLS, LABOR, ETC. TO COMPLETE MEDIAN NOSE AS DETAILED.

**MONOLITHIC CONCRETE MEDIAN NOSE DETAILS**

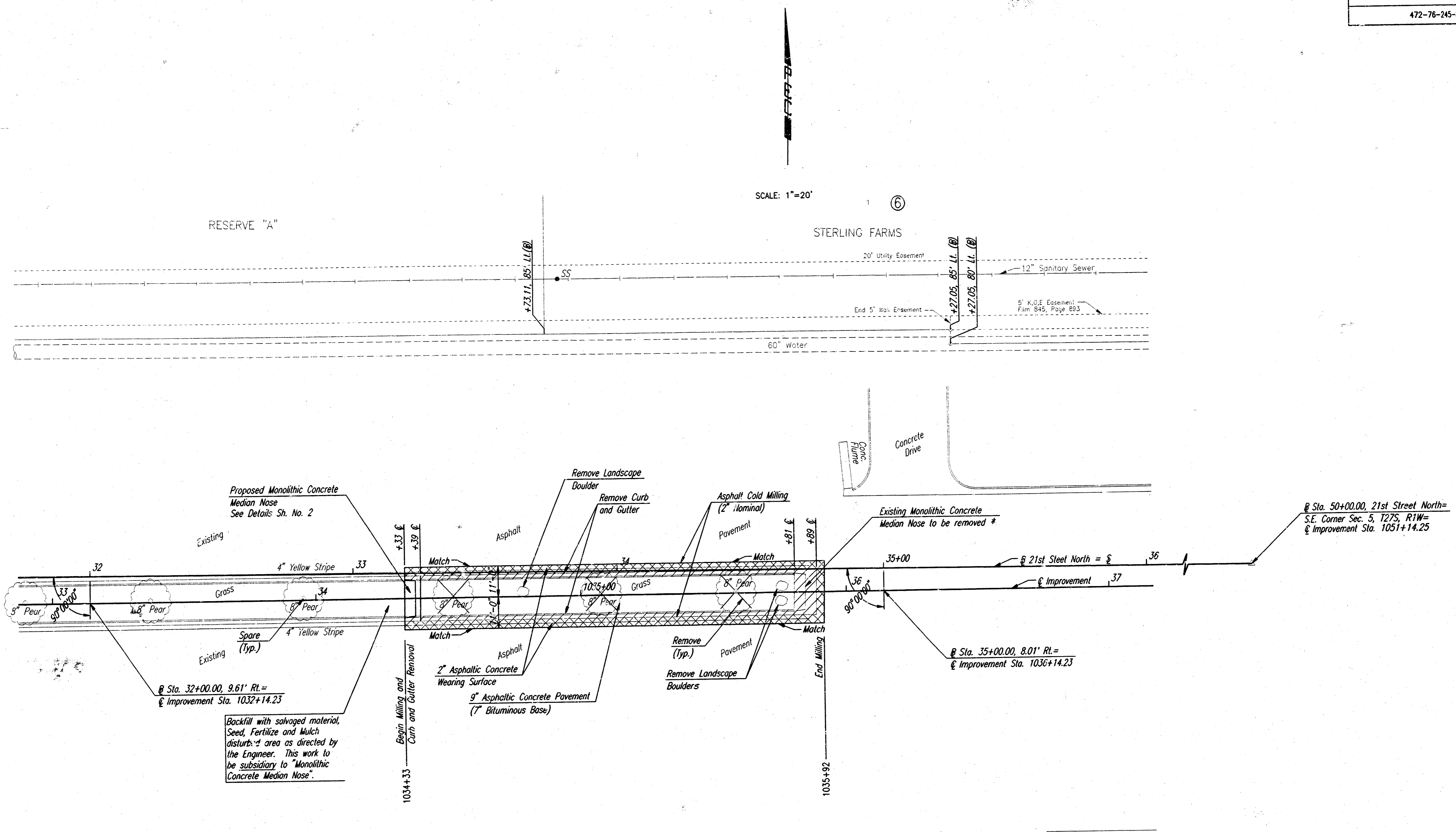
**TYPICAL SECTIONS**

Professional Engineering Consultants, P.A.  
303 S. TOPSKA • WICHITA, KANSAS 67202  
316-262-2691 • FAX 316-262-3003

Designed by	BER, GDD	Checked by	
Drawn by	DEP	Date	DEC., 1998
		Job No.	9876P

DSNR: GDD OPER. DEP SCALE: 1"=20.00  
0:11998\38769\TYPSEC 02-05-1999 08:53:47 am

PROJECT NO.	SHEET NO.	TOTAL SHEETS
472-76-245-81892-000-000-001	3	4



NOTE: CONTRACTOR SHALL REMOVE 3 TREES AND 3 BOULDERS AND DIRT (EXCAVATION) IN THE AREA OF PROPOSED IMPROVEMENTS AS DIRECTED BY THE ENGINEER AS PART OF THE BID ITEM "CLEARING R/W AND SITE PREPARATION".

\* To be bid and paid for as Sq. Yds. "Pavement Removal".

DSNR: GOD OPER DEP SCALE: 1"=20'00  
C:\1998\8769\STRPLAN 02-05-1999 08:55:26 am

21ST STREET NORTH

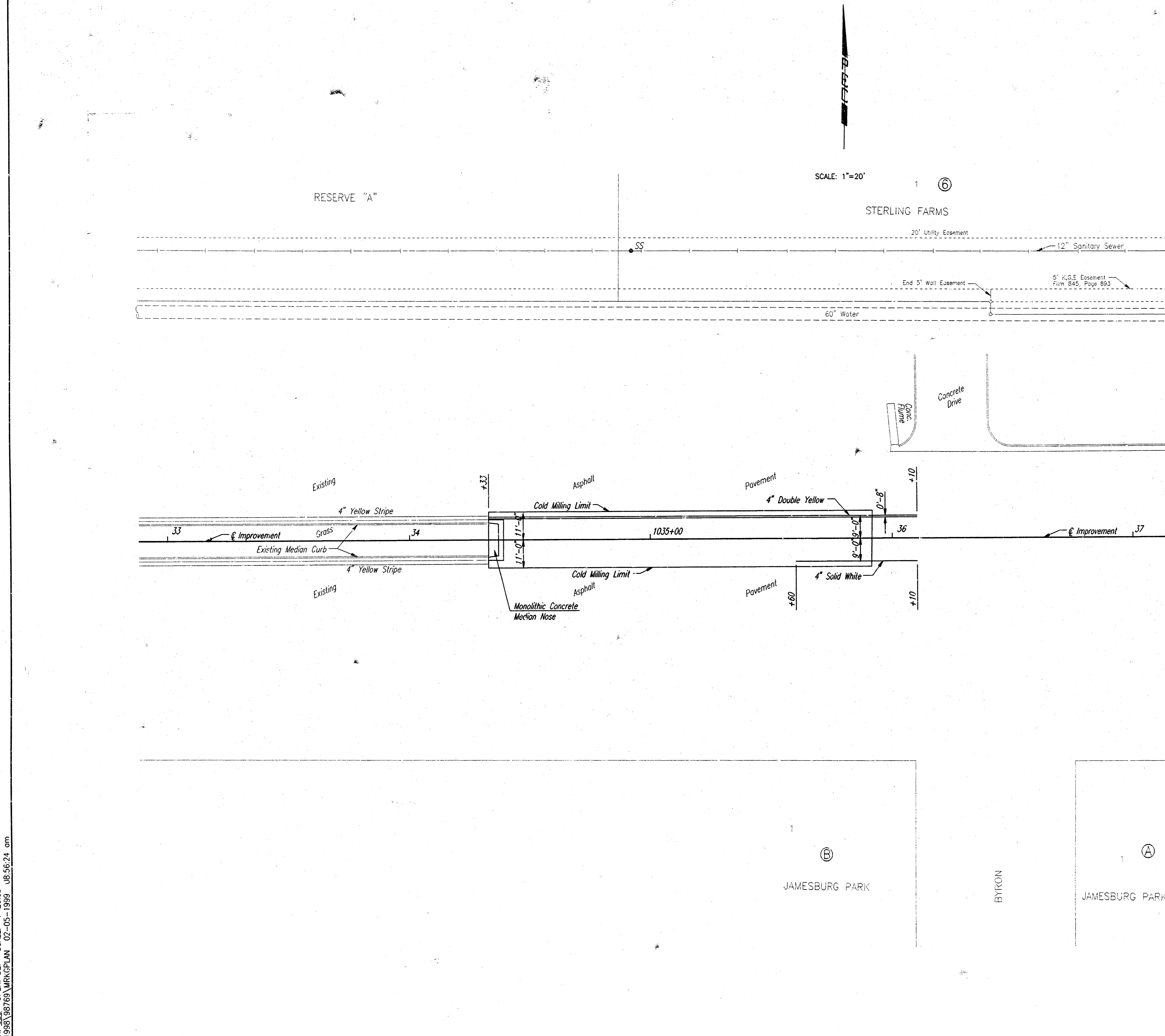
**LEFT TURN LANE**  
@ STA. 1034+33 TO STA. 1035+92

**Professional Engineering Consultants, P.A.**  
303 S. TOPSKA • WICHITA, KANSAS 67202  
316-262-2691 • FAX 316-262-3003

Designed by BER, GOD	Checked by
Drawn by DEP	Date DEC., 1998   Job No. 98769

DSNR: GOD OPER DEP SCALE: 1"=20'00  
C:\1998\8769\STRPLAN 02-05-1999 08:55:26 am

PROJECT NO.	SHEET NO.	TOTAL SHEETS
472-76-245-81892-000-000-001	4	4



SCALE: 1"=20'

STERLING FARMS

JAMESBURG PARK

JAMESBURG PARK

BYRON

BILL OF MATERIALS *	
PROJ. NO. 472-76-245-82539-000-000-001	
COLD PLASTIC TRAFFIC MARKING (4" YELLOW)	354 L.F.
COLD PLASTIC TRAFFIC MARKING (4" WHITE)	50 L.F.

\* FOR INFORMATION ONLY. TO BE PAID FOR UNDER THE BID ITEM "TRAFFIC MARKING - LUMP SUM".

NOTE: ALL MARKING DIMENSIONS ARE TO CENTER OF STRIPE.

ALL MARKINGS SHALL CONFORM TO THE CITY OF WICHITA SPECIFICATIONS FOR "COLD PLASTIC TRAFFIC MARKINGS".

21ST STREET NORTH

**MARKING PLAN**  
 @ STA. 1034+33 TO STA. 1036+10

**Professional Engineering Consultants, P.A.**  
 303 S. TOPEKA • WICHITA, KANSAS 67202  
 316-262-2691 • FAX 316-262-3003

Designed by	BER, CDD	Checked by	
Drawn by	DEP	Date	DEC 1998

Job No. 98789

DNR: GDD OPER. DEP. SCALE: 1"=20.00  
 0:\1998\08\09\MARKPLAN 02-05-1999 08:56:24 am

18-02-05-13