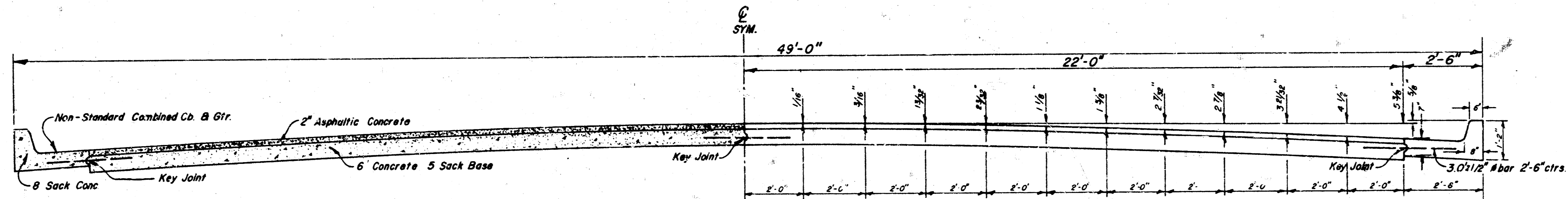
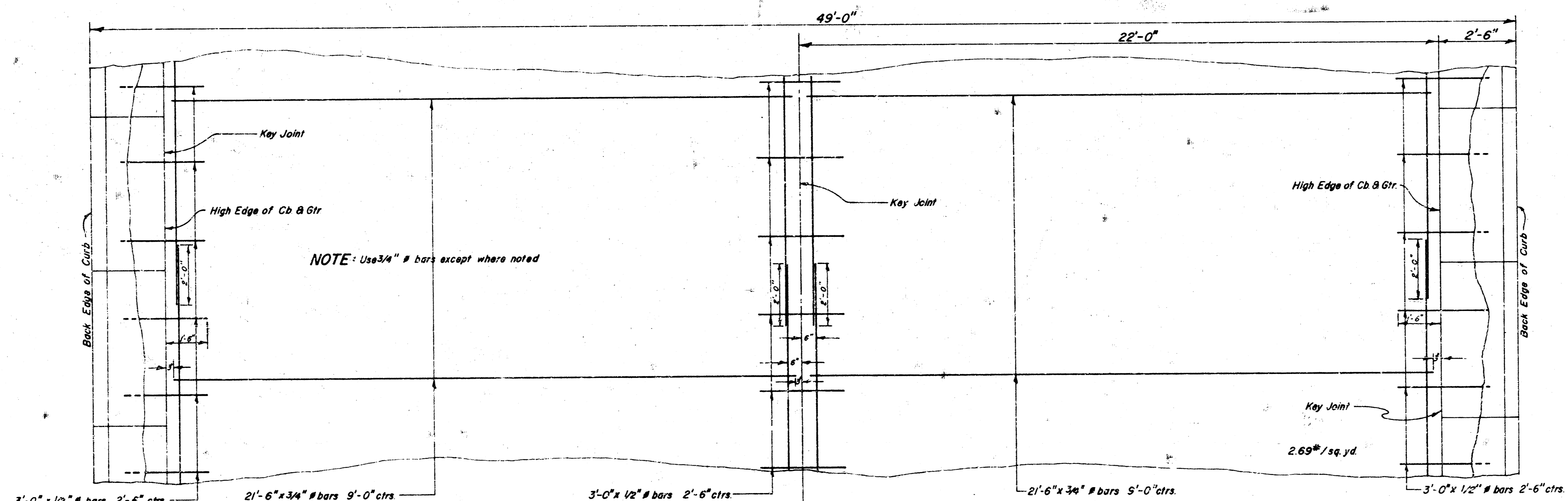


TWENTY-FIRST STREET

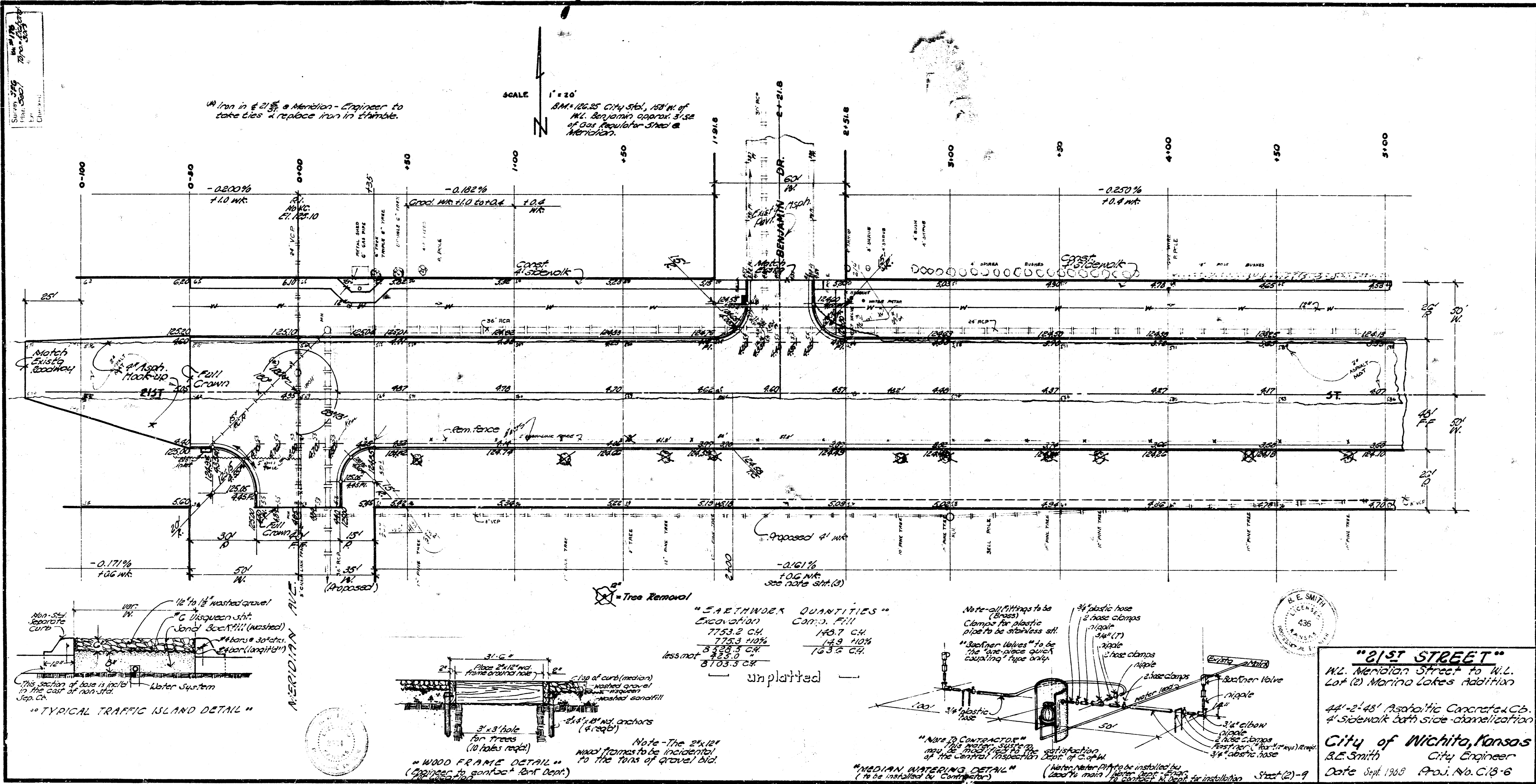
WL. MERIDIAN AVENUE TO WL. LOT (2)
MARINA LAKES ADDITION. PROJ# C18-6



TYPICAL SECTION
Scale 1"=2'-0"



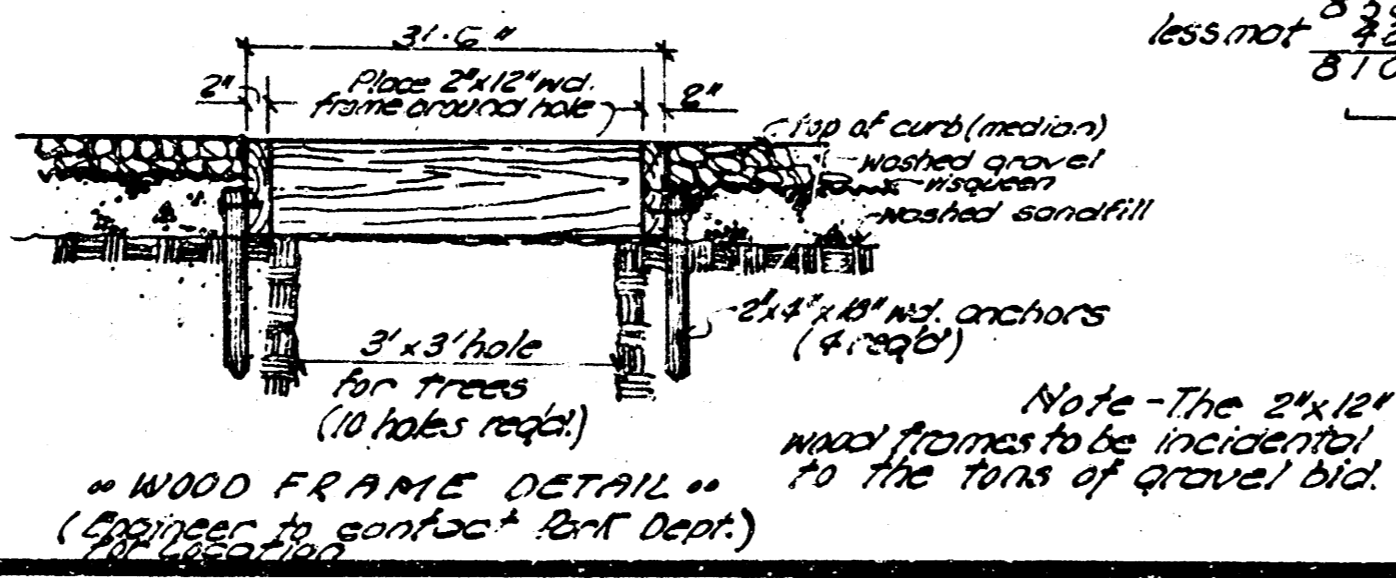
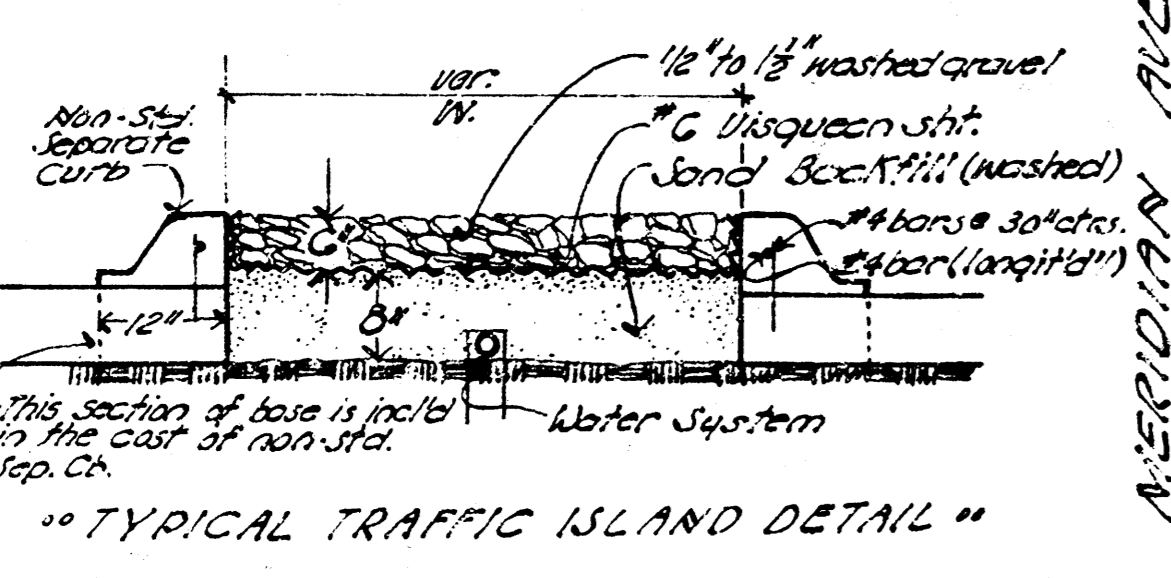
STEEL PATTERN
Scale 1"=2'-0"



11/10/38
 B.E. SMITH
 CIVIL ENGINEER
 436
 11th St. W.
 WICHITA, KANSAS

Iron in #21st & Meridian - Engineer to
 take ties & replace iron in handle.

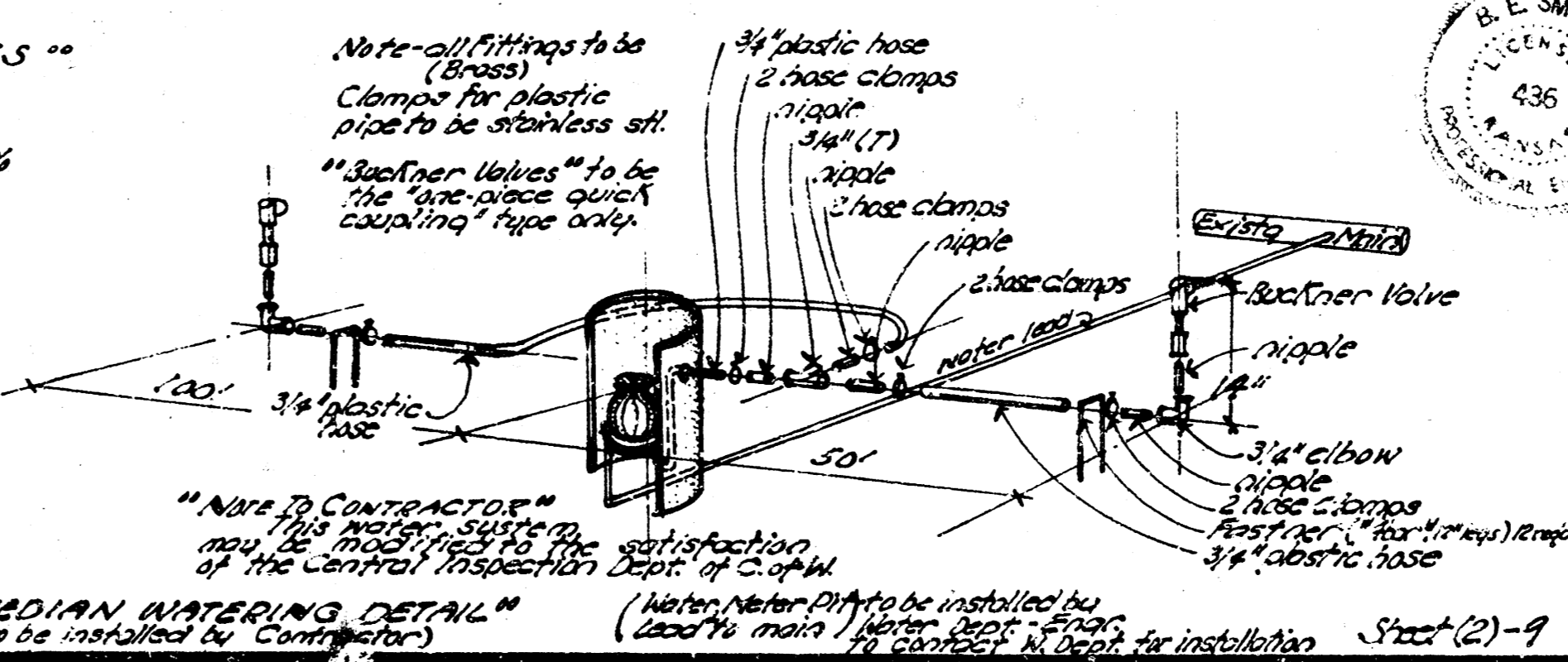
SCALE 1" = 20'
 B.M. 106.25 City Sta. 148' W. of
 W.L. Benjamin approx. 3' SE
 of Gas Regulator Street @
 Meridian.



* Tree Removal

"SAFETY ANDER QUANTITIES"
 Excavation Camo. Fill
 7753.2 CH 140.7 CH
 7753.2 100% 140.7 100%
 8193.3 CH 154.9 CH
 less mat. 8703.3 CH

unplatted

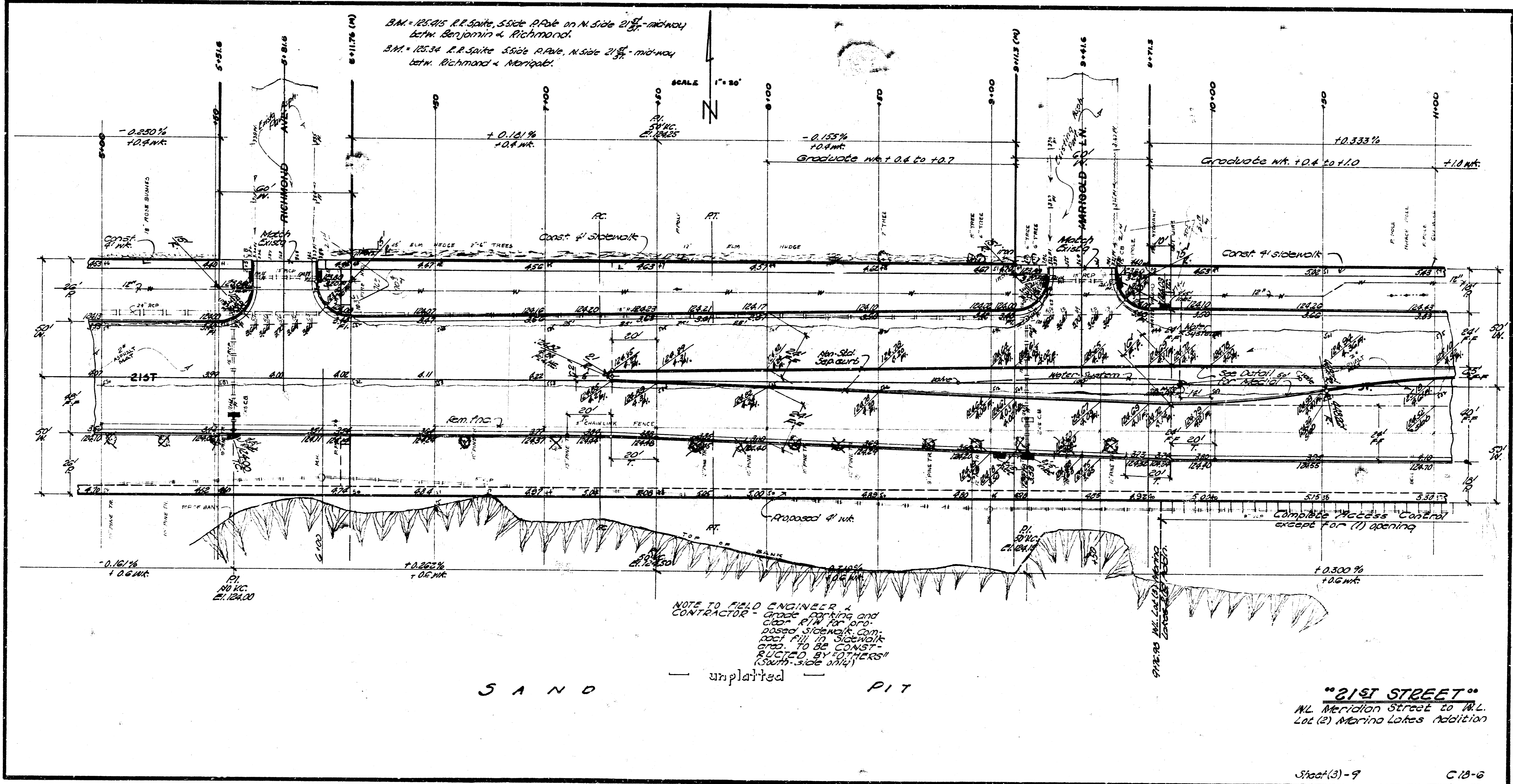


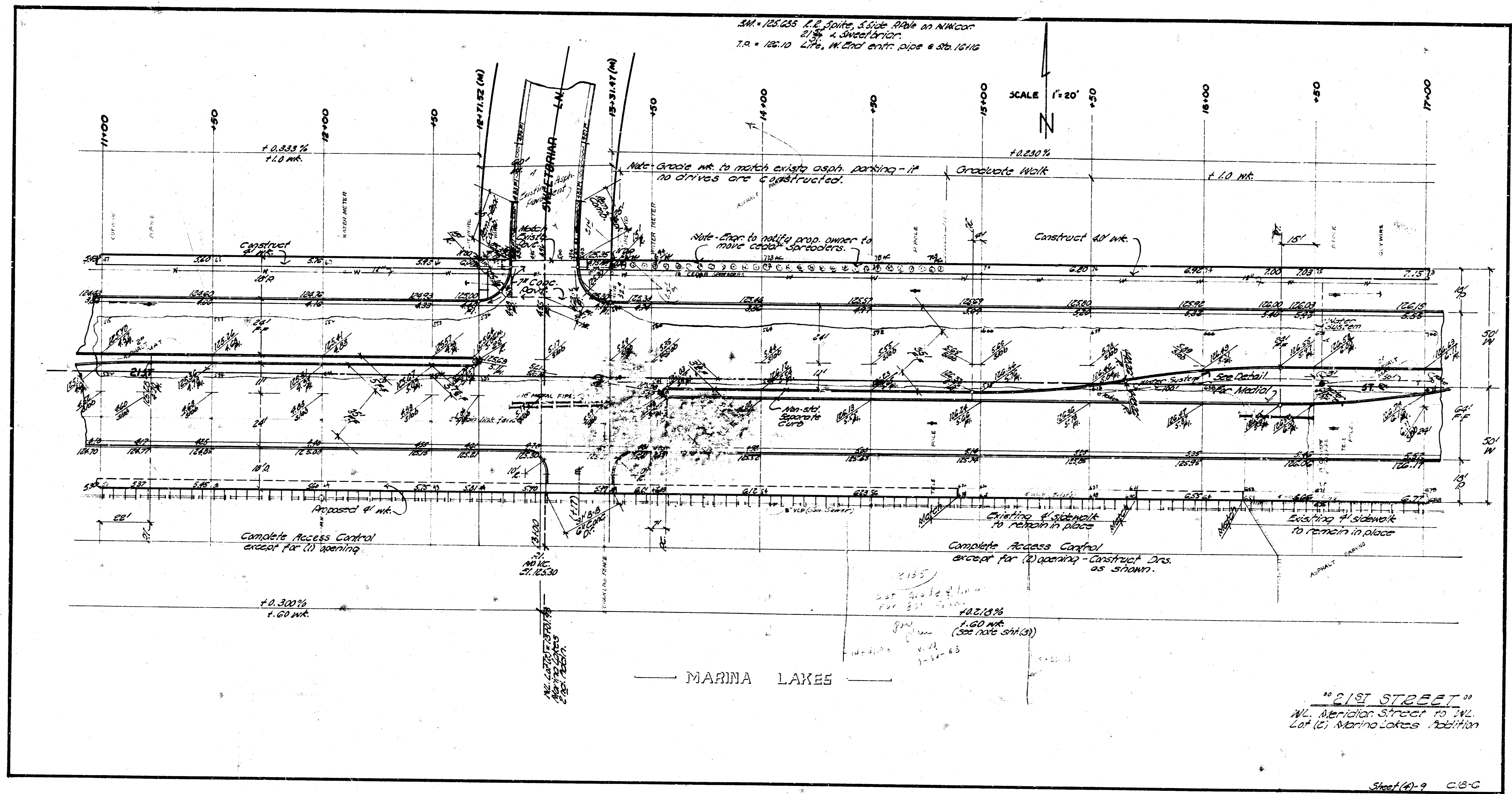
"21ST STREET"
 W.L. Meridian Street to W.L.
 Lot (2) Marina Lakes Addition

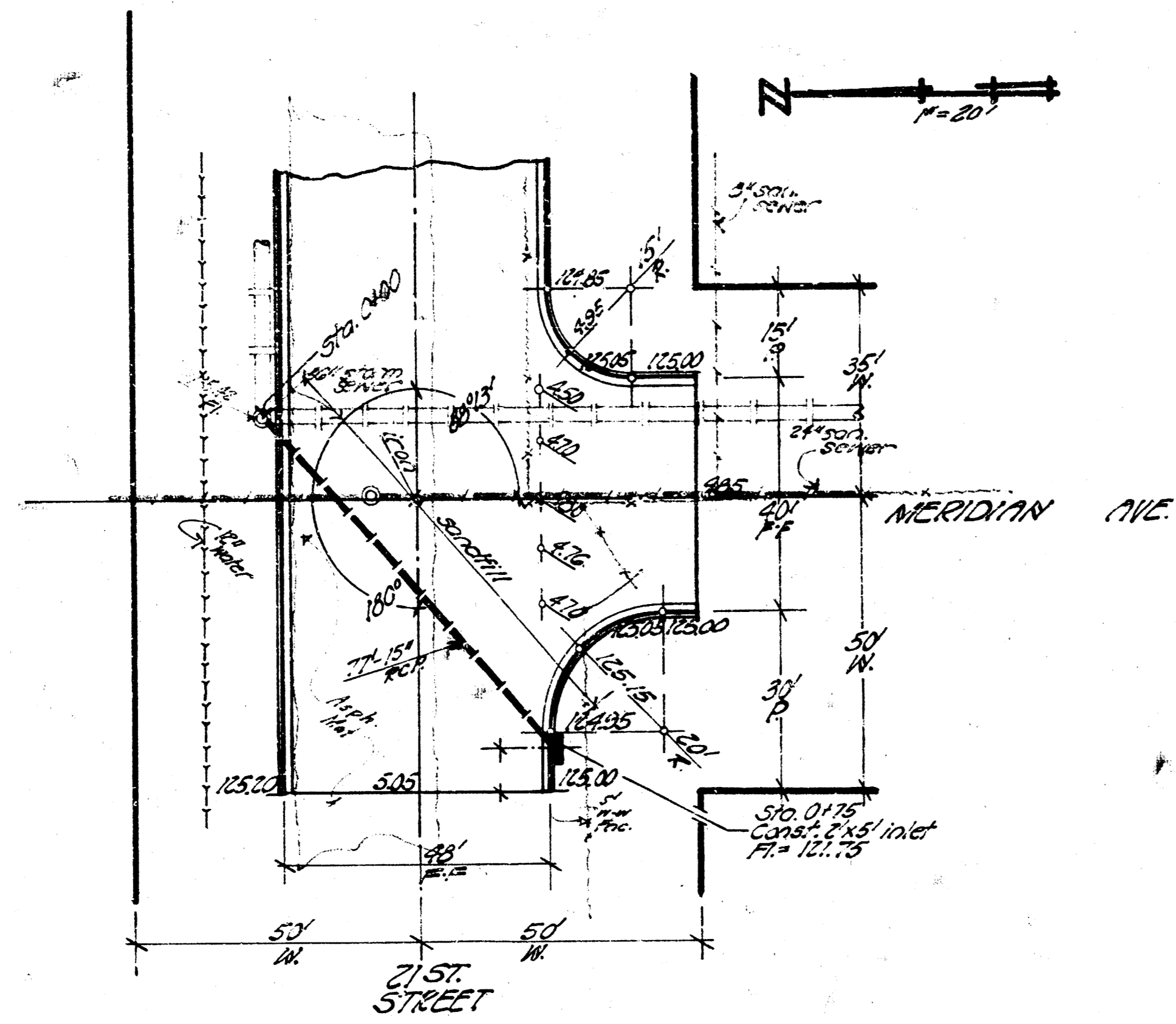
44'-2'-48" Asphalt Concrete & Cb.
 4' sidewalk both side - amelioration

City of Wichita, Kansas
 B.E. Smith City Engineer
 Date Sept. 1938 Proj. No. C.13-6

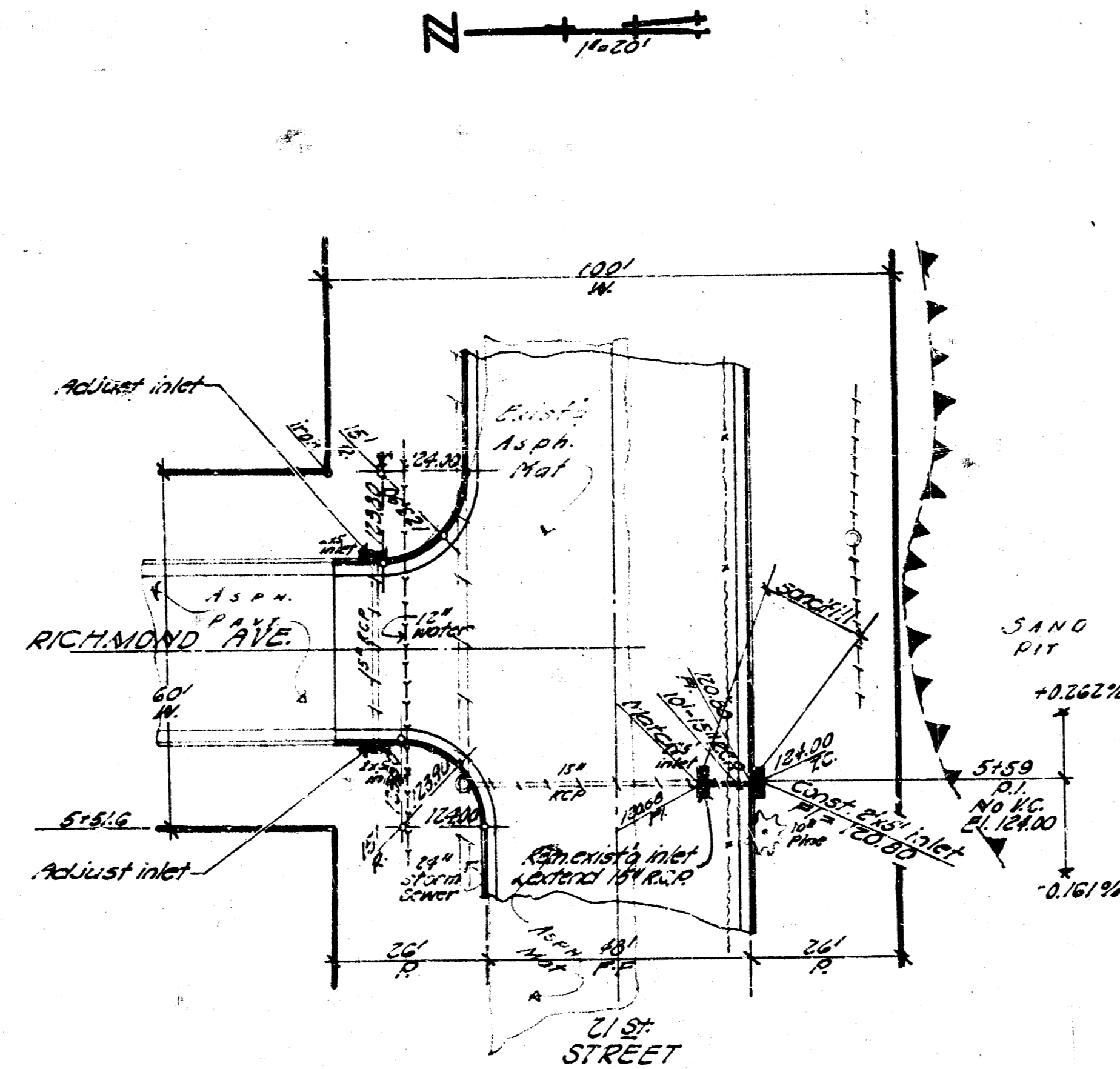
Survey MFD
Plan
Sheet
C18-6



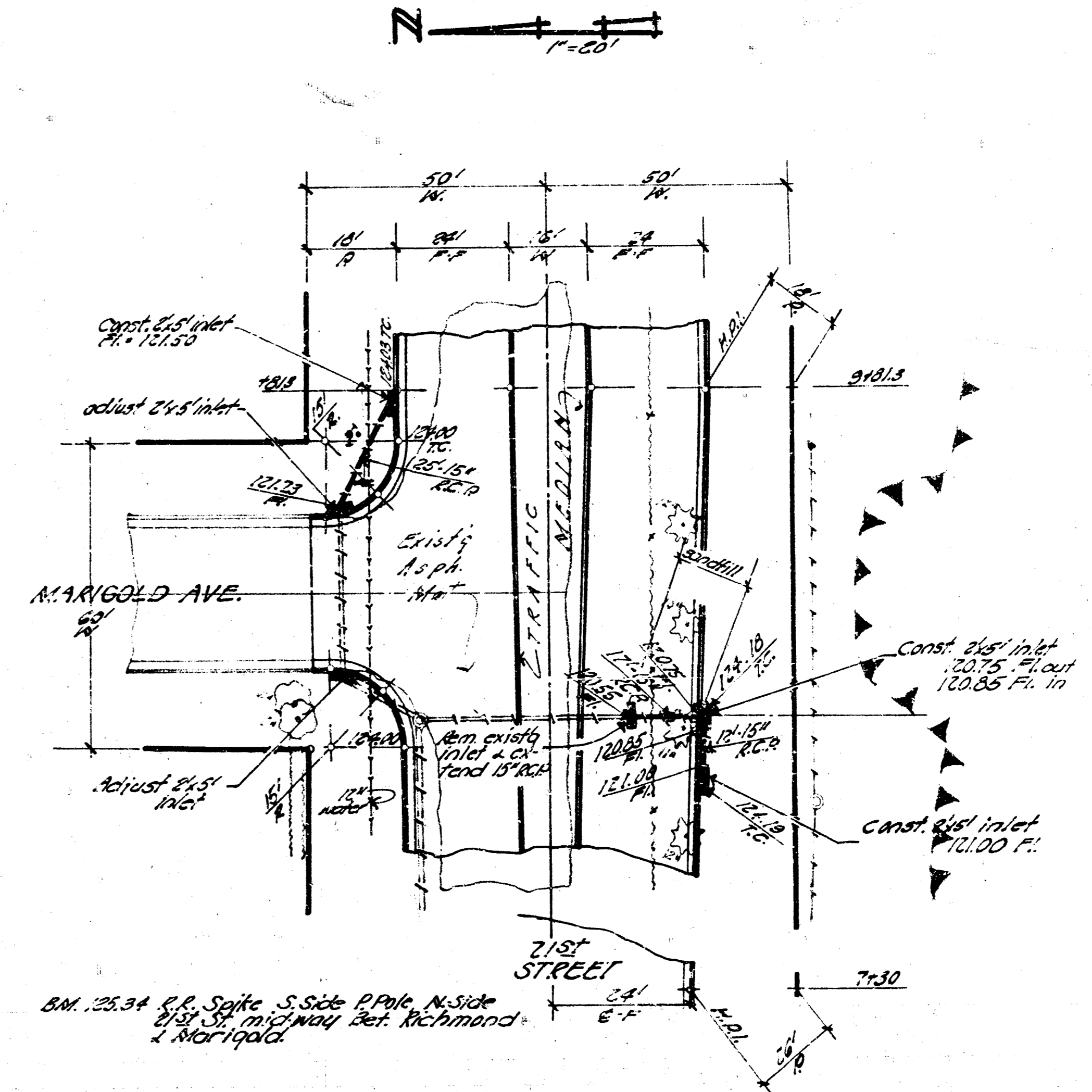




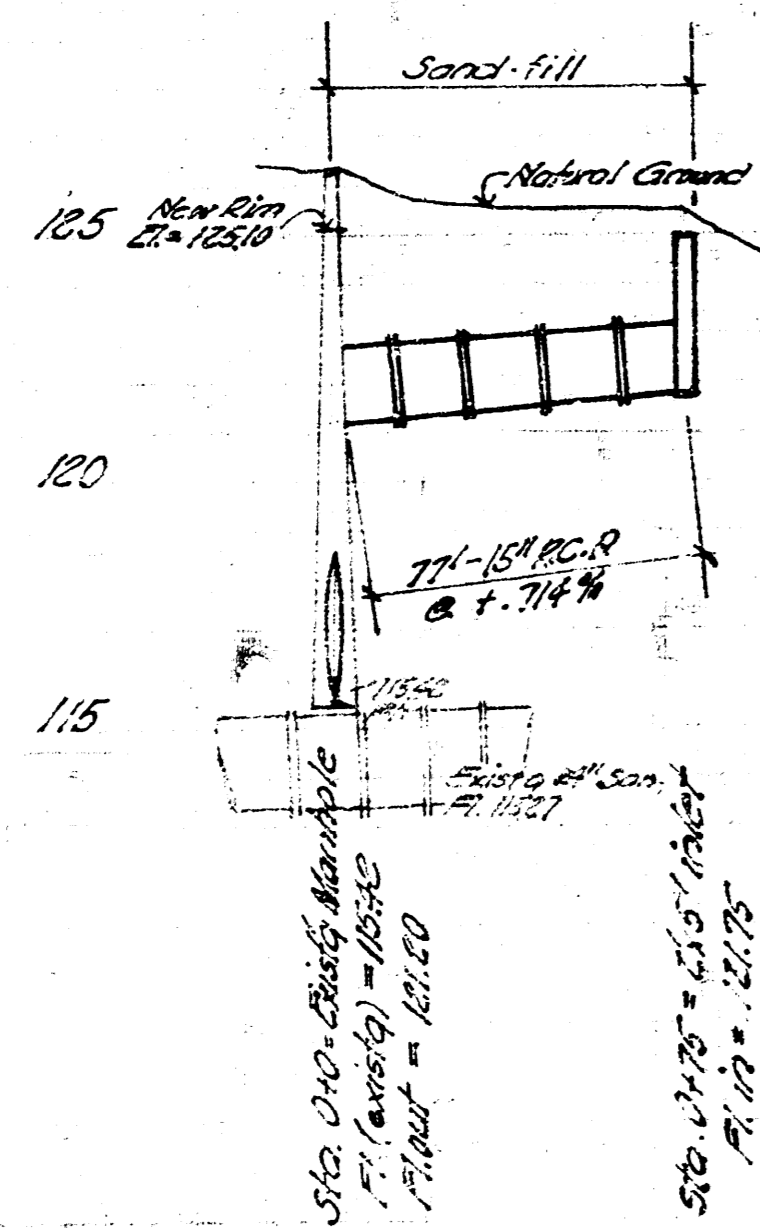
BM 126.25 Chy. St. 128' W. of W. Benjamin approx. 3' S.E. of Gas Regulator Shed & Meridian



BM 125.45 R.R. Spike S. Side Rowe on N. Side 21st St. Midway bet. Benjamin & Richmond



BM 125.94 R.R. Spike S. Side P.P. N. Side 21st St. Midway bet. Richmond & Marigold



INCIDENTAL DRAINAGE in connection with 21st Street - W. Meridian to W. Lot 21 Meriana Latas Actin. Sheet 9 of 9 Sept. 1908 Proj. No. C.B.-6