

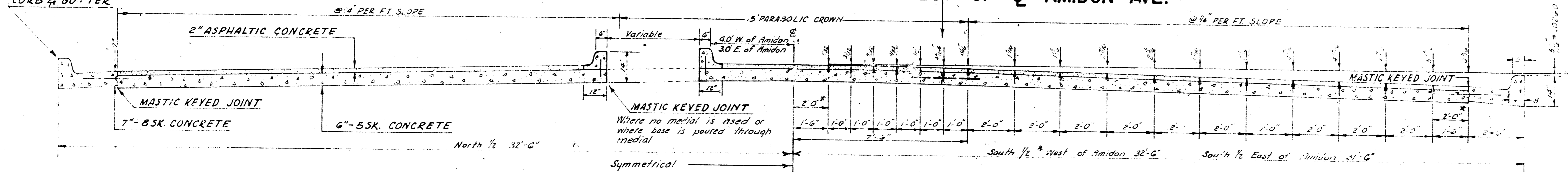
PROJECT NO. C14-44

TWENTY FIRST STREET

FROM E.L. WOODROW AVE. TO 450 FT. WEST OF \odot AMIDON AVE.

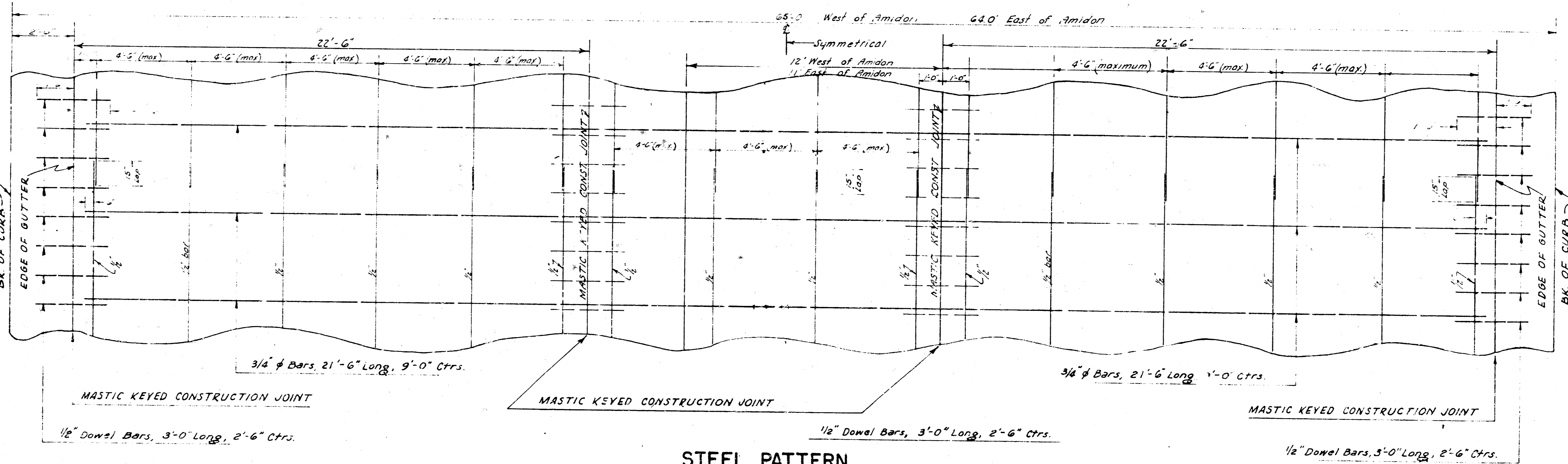
The location of intermediate mastic keyed joints shall be approved by the engineer.

NON-STANDARD COMBINED CURB & GUTTER



TYPICAL SECTION

NOT TO SCALE



STEEL PATTERN

NOT TO SCALE

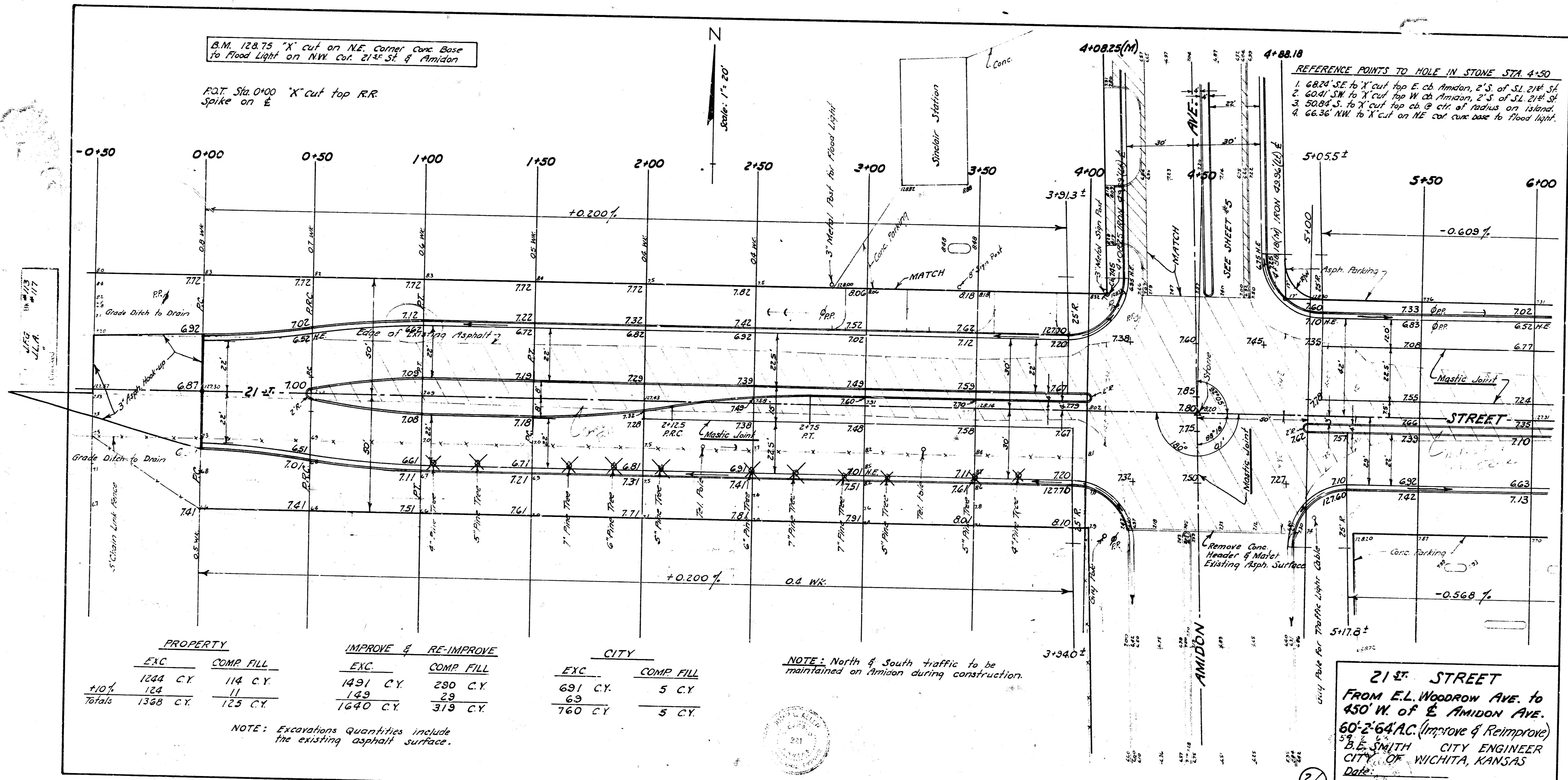
USE 3/4" ϕ BARS EXCEPT WHERE NOTED

B.M. 128.75 'X' cut on NE. corner Conc Base to Flood Light on NW cor. 21st St. & Amidon

P.O.T. Sta. 0+00 'X' cut top R.R. Spike on E

Scale: 1" = 20'

REFERENCE POINTS TO MOLE IN STONE STA. 4+50
 1. 6824 SE to 'X' cut top E. cb Amidon, 2' S. of SL 21st St.
 2. 6041 SW to 'X' cut top W. cb Amidon, 2' S. of SL 21st St.
 3. 5084 S. to 'X' cut top cb @ ctr. of radius on island.
 4. 6636 NW to 'X' cut on NE cor. conc base to Flood light.



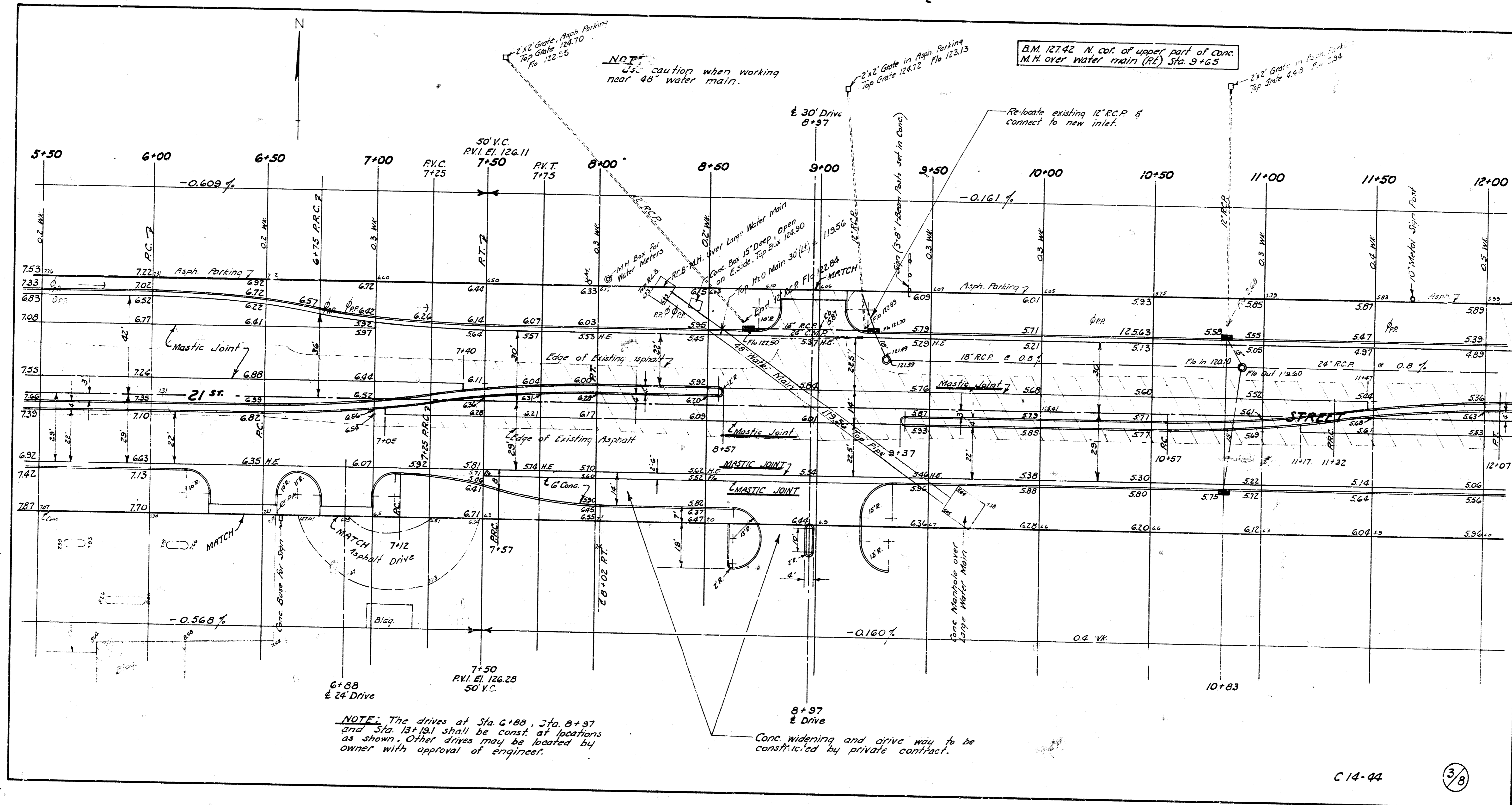
PROPERTY		IMPROVE & RE-IMPROVE		CITY	
EXC.	COMP. FILL	EXC.	COMP. FILL	EXC.	COMP. FILL
1244 C.Y.	114 C.Y.	1491 C.Y.	280 C.Y.	691 C.Y.	5 C.Y.
124	11	149	29	69	
Totals	1358 C.Y.	1640 C.Y.	319 C.Y.	760 C.Y.	5 C.Y.

NOTE: Excavations Quantities include the existing asphalt surface.

NOTE: North & South traffic to be maintained on Amidon during construction.

21st STREET
 FROM E.L. WOODROW AVE. TO
 450' W. OF E. AMIDON AVE.
 60'-2'-64" A.C. (Improve & Reimprove)
 B.E. SMITH CITY ENGINEER
 CITY OF WICHITA, KANSAS
 Date: _____
 Project No. C14-44

26



NOTICE: Caution when working near 48" water main.

B.M. 12742 N. cor. of upper part of conc. M.H. over water main (Rt) Sta. 9+65

NOTE: The drives at Sta. 6+88, Sta. 8+97 and Sta. 10+83 shall be const. at locations as shown. Other drives may be located by owner with approval of engineer.

Conc. widening and drive way to be constructed by private contract.

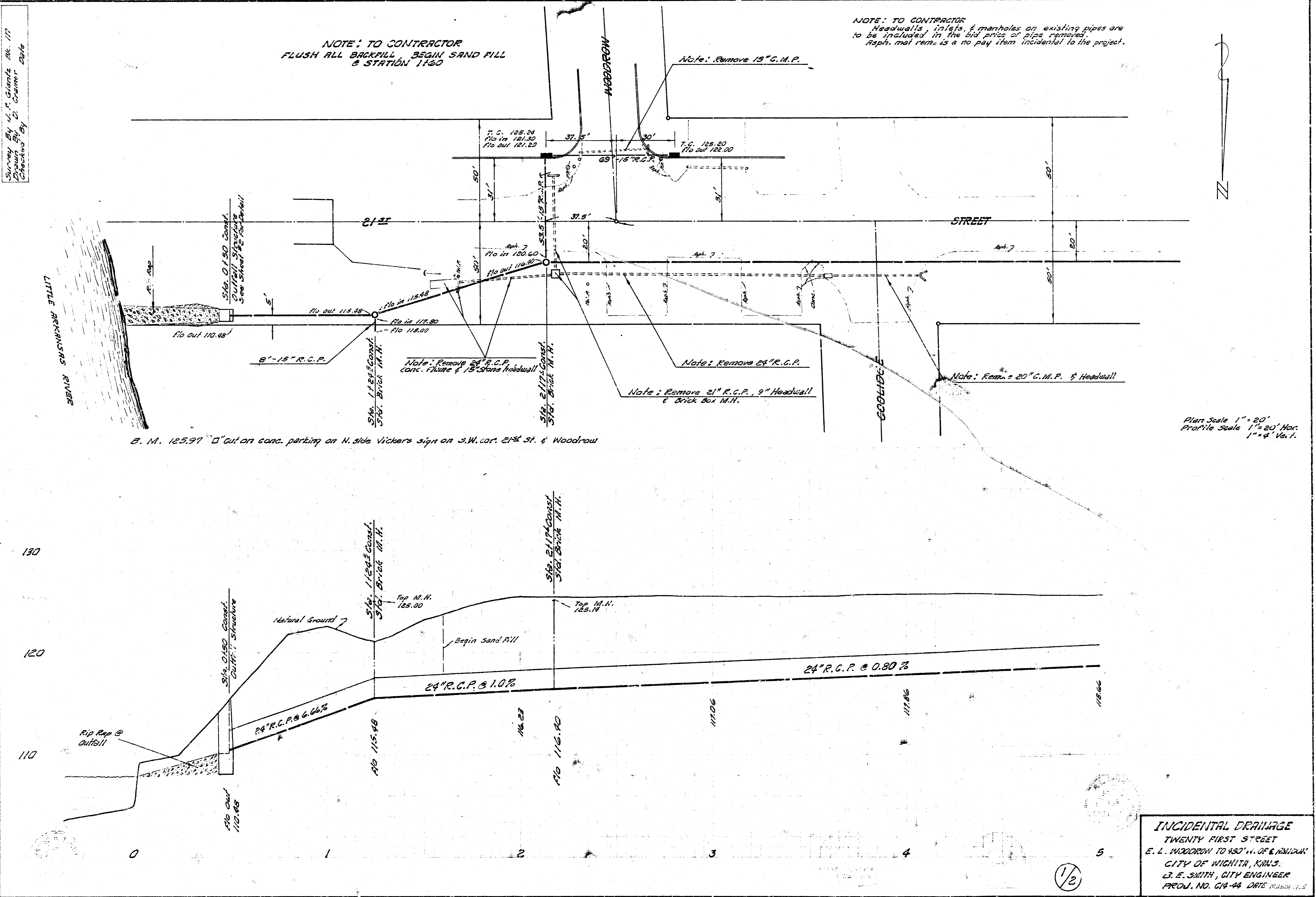
C 14-94

3/8

Survey By: J. F. Smith, Bk. 117
 Drawn By: J. F. Smith
 Checked By: J. F. Smith

NOTE: TO CONTRACTOR
 FLUSH ALL BACKFILL, BEGIN SAND FILL
 @ STATION 1120

NOTE: TO CONTRACTOR
 Headwalls, inlets, & manholes on existing pipes are
 to be included in the bid price of pipe removed.
 Asph. mat. rem. is a no pay item incidental to the project.



B. M. 125.97 12\"/>

Plan Scale 1\"/>

INCIDENTAL DRAINAGE
 TWENTY FIRST STREET
 E. L. WOODROW TO 150' W. OF E. WOODROW
 CITY OF WICHITA, KANS.
 E. F. SMITH, CITY ENGINEER
 PROJ. NO. 619-44 DATE: MARCH 1955

1/2

