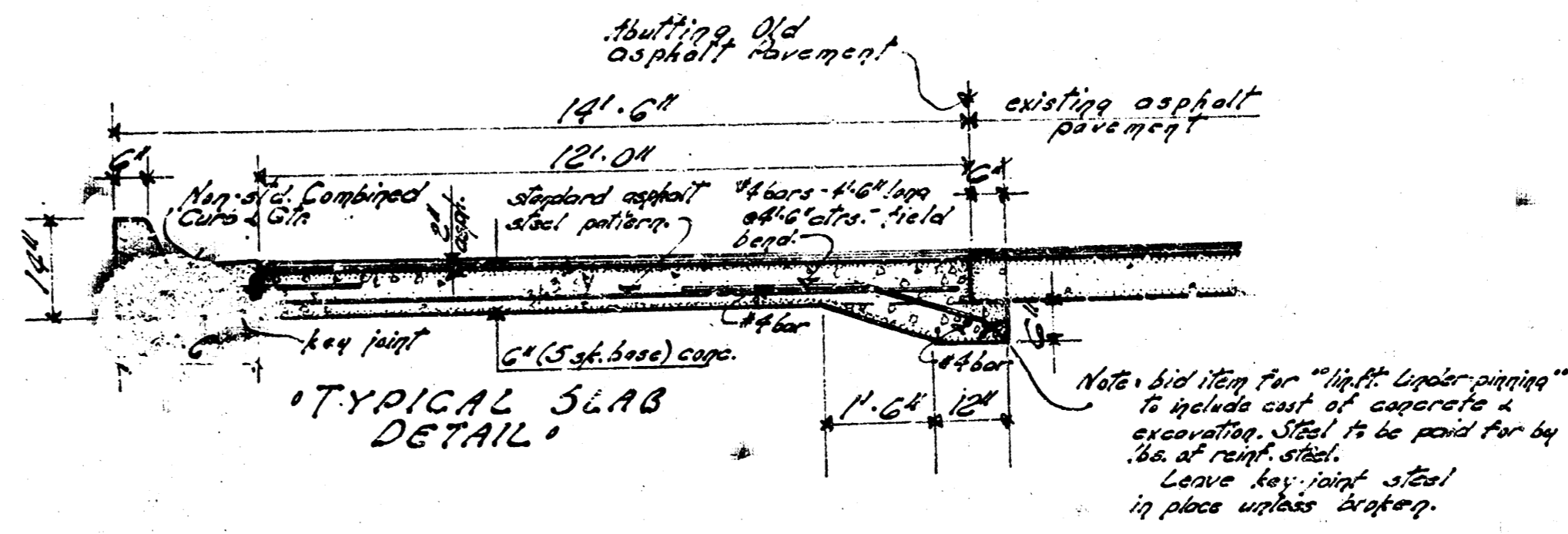
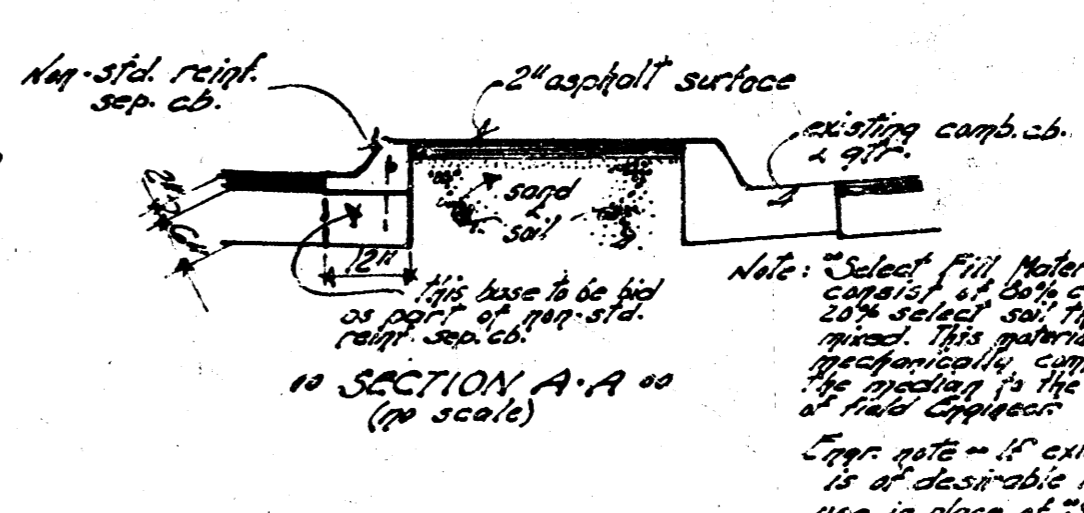
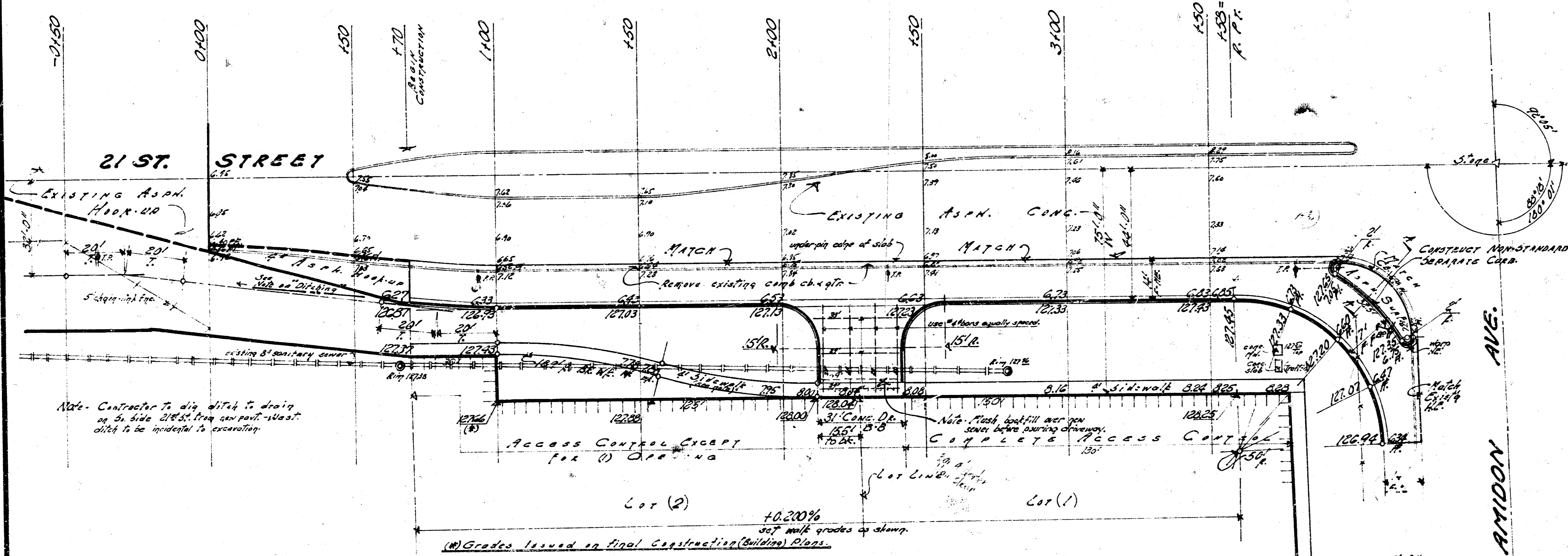


17'-00" ON C&G 2450 TO NORTH ST. USE ONLY  
 2000 TRAFFIC ISLAND ON 21ST & N. AVENUE



Survey  
 City of Wichita  
 1968



Note: Contractor to dig ditch to drain on N. side 21st St. from street along ditch to be installed to excavation.

Access Control CRYPT FOR (1) OFFICE

COMPLETE ACCESS CONTROL

"MARINA LAKE ADDITION"

"EARTHWORK QUANTITIES"

Excavating	582.00 CY	Compacted Fill	155.00 CY
518.14 (AD)	16.86 (AD)		171.14 CY
576.74 CY			

Note: Use all desirable excavation on project to grade portions.

"NOTE TO FIELD CREW/CONTRACTOR"  
 Concrete parking & curbs for proposed sidewalk to be constructed by "OTHERS"

Marina Lakes Pavement -  
**21ST STREET - South Side**  
 N.E. Cor. 21st, Marina Lakes Addition, to Amidon Avenue.  
**AMIDON AVENUE - West Side**  
 @ 21st Street to 700' South of 21st St.



ANALYTIC CONCRETE WORKING 12'-2'-14"  
**CITY OF WICHITA, KANSAS**  
 B. E. Smith City Engineer  
 Date: May 1968 Project No. C17-69

Sheet (1) of 3

