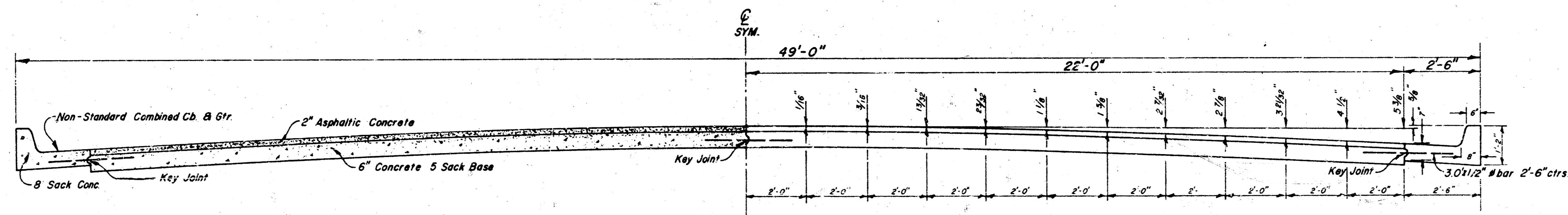
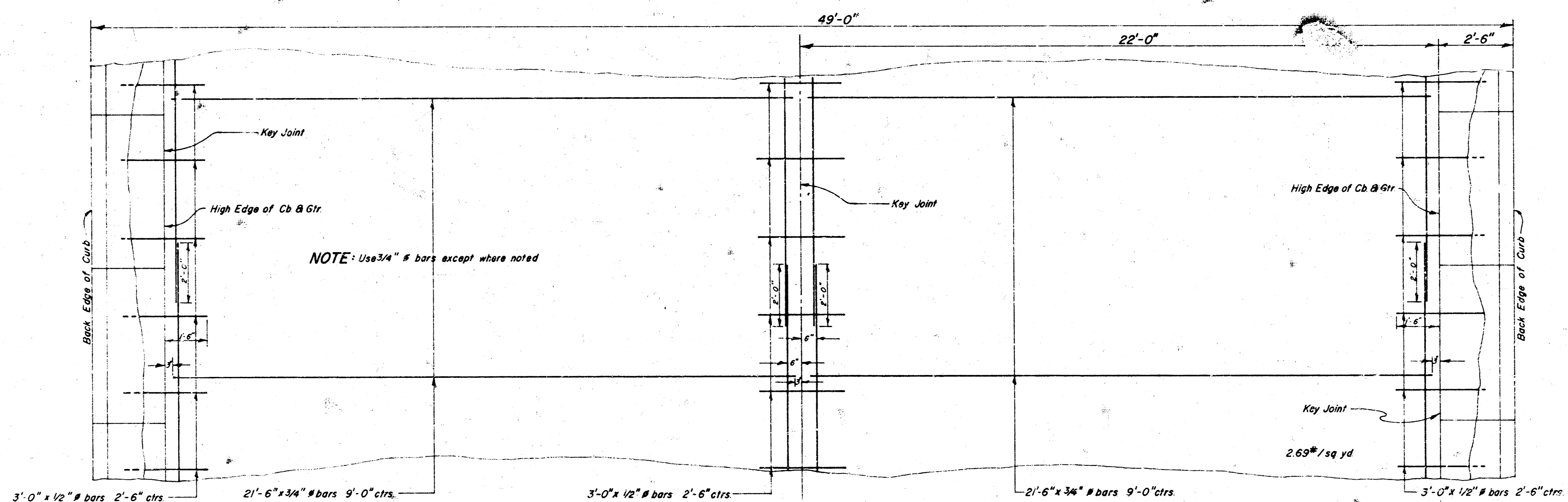


**21<sup>st</sup> STREET**  
 E.L. RIDGEWOOD — E.L. WOODLAWN  
 C 18-4



**TYPICAL SECTION**  
 Scale 1" = 2'-0"



**STEEL PATTERN**  
 Scale 1" = 2'-0"

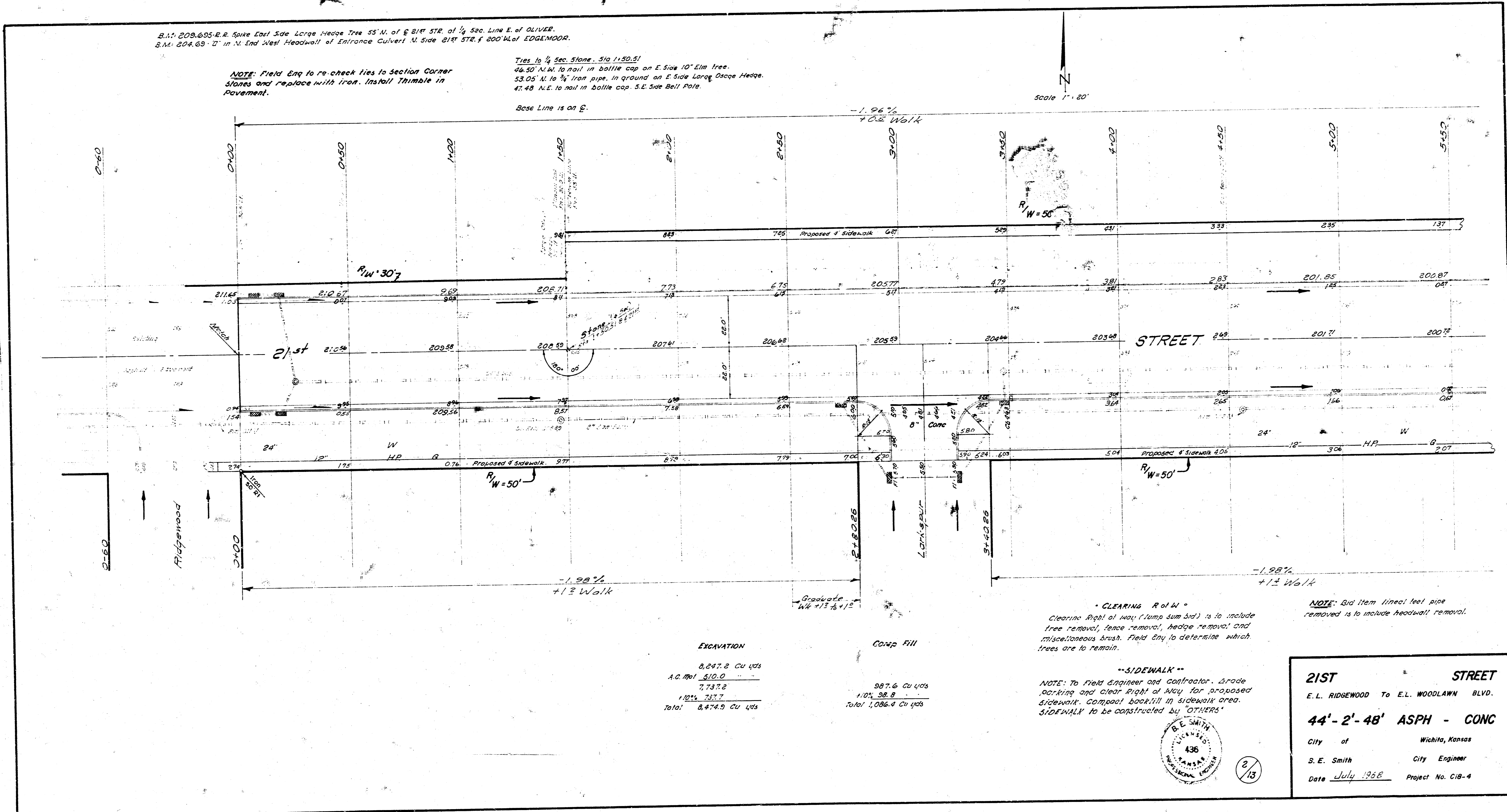
B.M. 209.605-R.R. Spike East Side Large Hedge Tree 55' N. of E 21st STR. of 1/4 Sec. Line E. of OLIVER.  
 B.M. 204.69' D' in N. End West Headwall of Entrance Culvert N. Side 21st STR. of 200' W. of EDGEWOOD.

NOTE: Field Eng to re-check ties to section corner stones and replace with iron. Install Thimble in Pavement.

Ties to 1/4 Sec. Stone, Sta 1+50.51  
 46.50' N.W. to nail in bottle cap on E. Side 10' Elm tree.  
 53.05' N. to 1/2" Iron pipe in ground on E. Side Large Hedge.  
 47.48' N.E. to nail in bottle cap S.E. Side Bell Pole.

Base Line is on E.

Scale 1" = 20'



EXCAVATION

8,247.2 Cu Yds
10.00' @ 10.0
7,737.2
10.15' @ 33.7
Total 8,474.9 Cu Yds

Comp. Fill

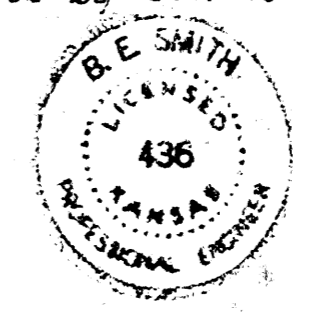
887.6 Cu Yds
10.15' @ 28.8
Total 1,086.4 Cu Yds

\* CLEARING R of W \*  
 Clearing Right of Way (Rump Sum Bid) is to include tree removal, fence removal, hedge removal and miscellaneous brush. Field Eng to determine which trees are to remain.

\*\*SIDEWALK\*\*  
 NOTE: To Field Engineer and Contractor. Grade, parking and clear Right of Way for proposed sidewalk. Compost backfill in sidewalk area. SIDEWALK to be constructed by "OTHERS"

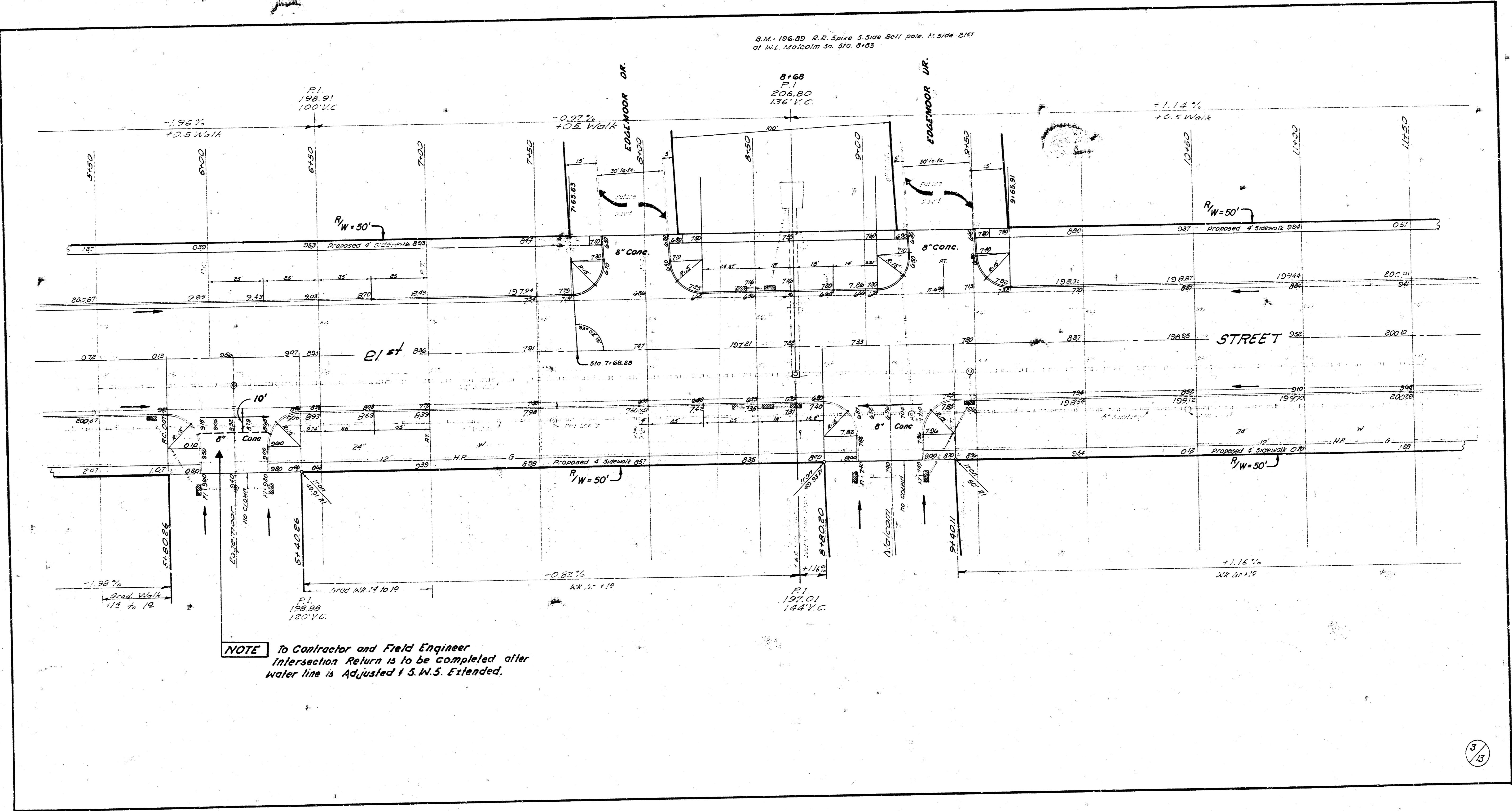
NOTE: Bid Item (line) feet pipe removed is to include headwall removal.

**21ST STREET**  
 E.L. RIDGEWOOD To E.L. WOODLAWN BLVD.  
**44'-2'-48' ASPH - CONC**  
 City of Wichita, Kansas  
 S. E. Smith City Engineer  
 Date July 1968 Project No. C18-4



2/13

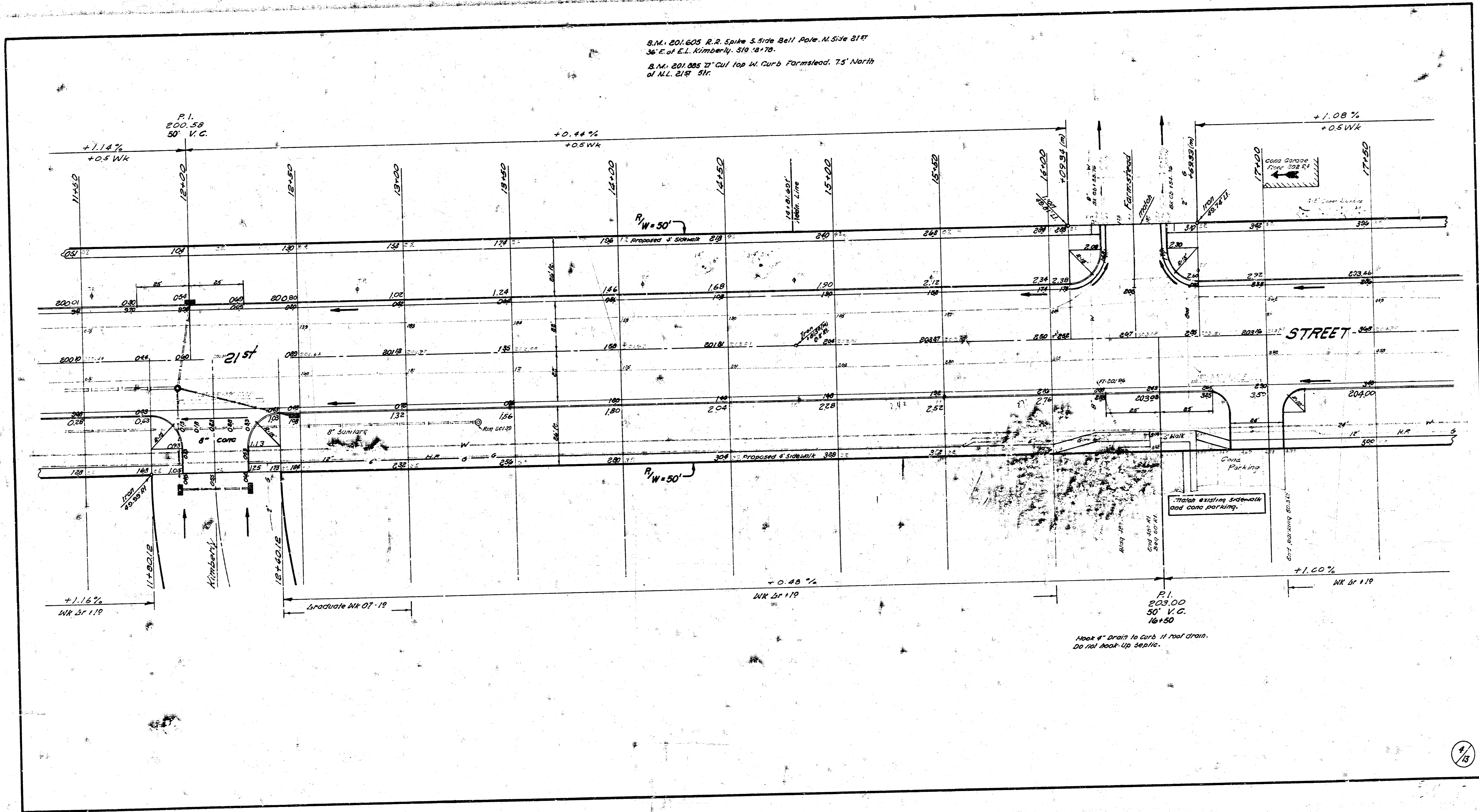
B.M. 106.80 R.R. Saira 5 Side Bell pole 11 Side 21ST  
of W.L. Malcolm Sp. 510 8/83



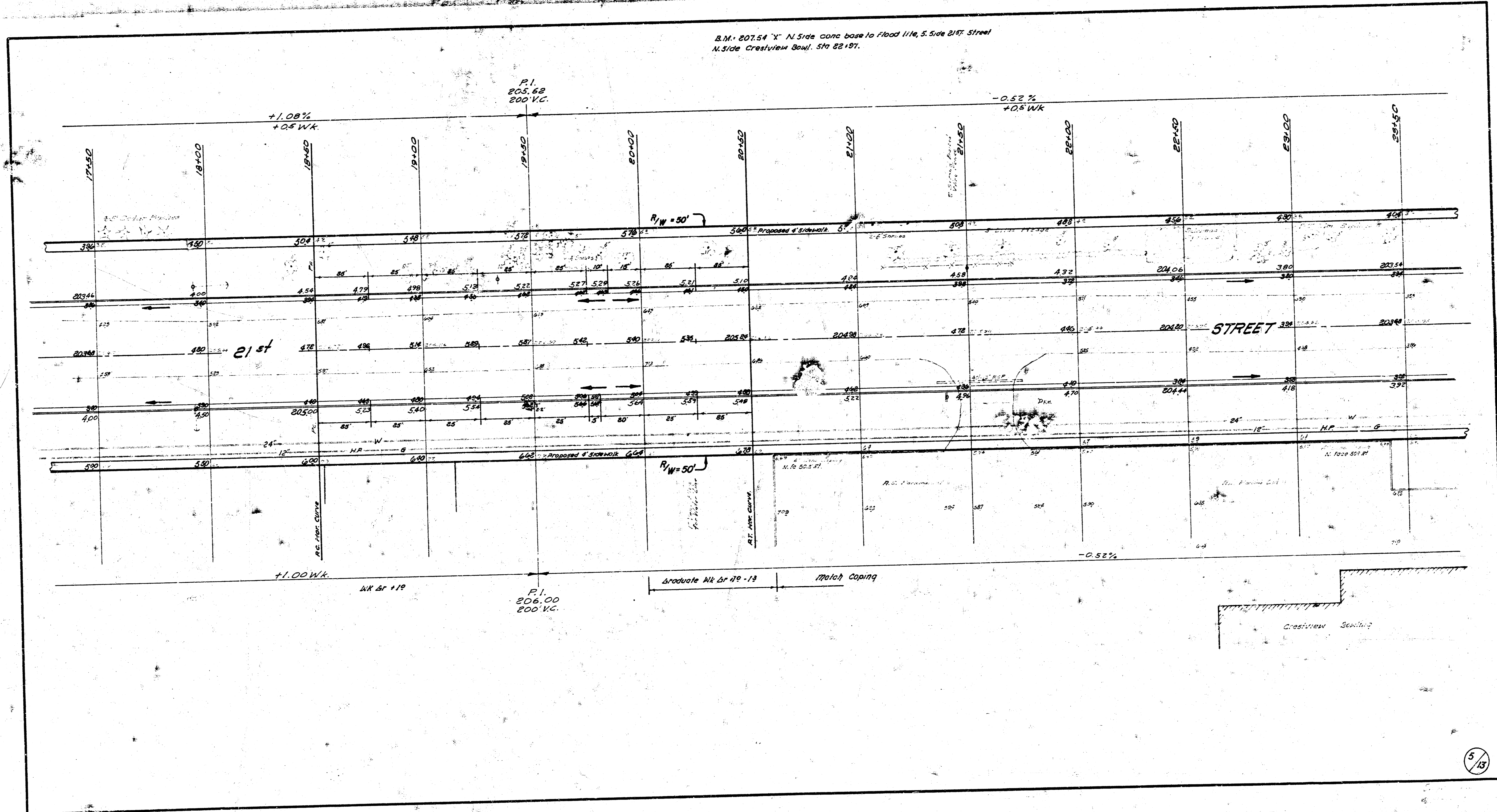
**NOTE** To Contractor and Field Engineer  
Intersection Return is to be completed after  
water line is Adjusted & S.W.S. Extended.

B.M. 201.805 R.P. Spike S. Side Bell Pole M.S. 1e 21' 36" E of E.L. Kimberly, S19° 18' 70."

B.M. 201.885 7' Cul top W. Curb Farmstead, 7.5' North of N.L. 21' 51'.

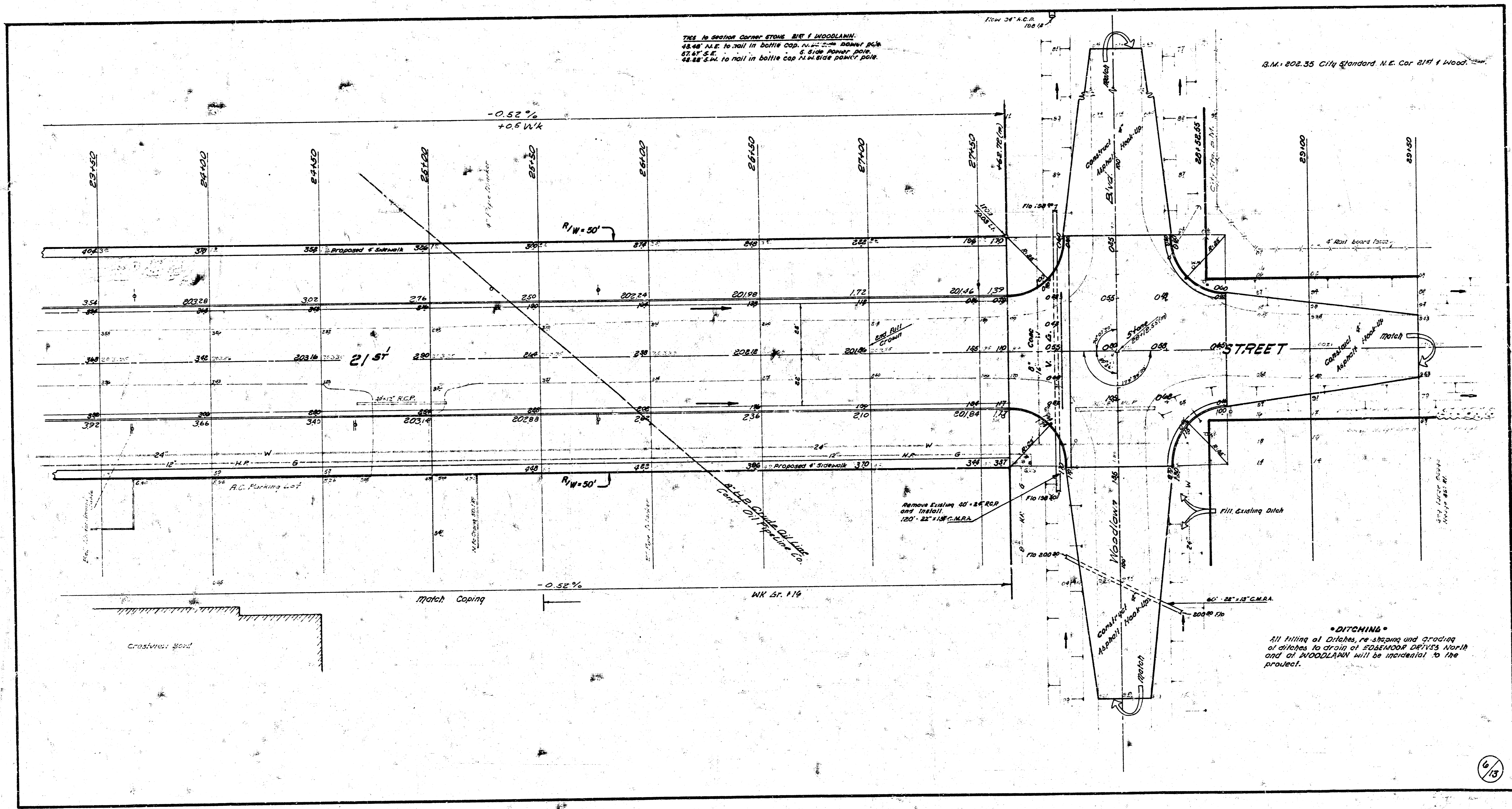


B.M. 207.54 " N Side conc base to flood line, S Side 21st Street  
N Side Crestview Blvd. Sta 22+57.



THIS IS SECTION CORNER STONE, SW 1/4 WOODLAWN.  
 45.48' A.L.S. to nail in bottle cap, N.W. 1/4 corner stake  
 57.47' S.E. to nail in bottle cap, S.E. corner stake  
 48.18' S.W. to nail in bottle cap, N.W. side power pole.

S.M. 202.55 City of Jourdard, N.E. Cor. 21st & Wood.



**\*DITCHING\***  
 All filling of ditches, re-shaping and grading of ditches to drain of EDENWOOD DEVICES North end of WOODLAWN will be incidental to the project.