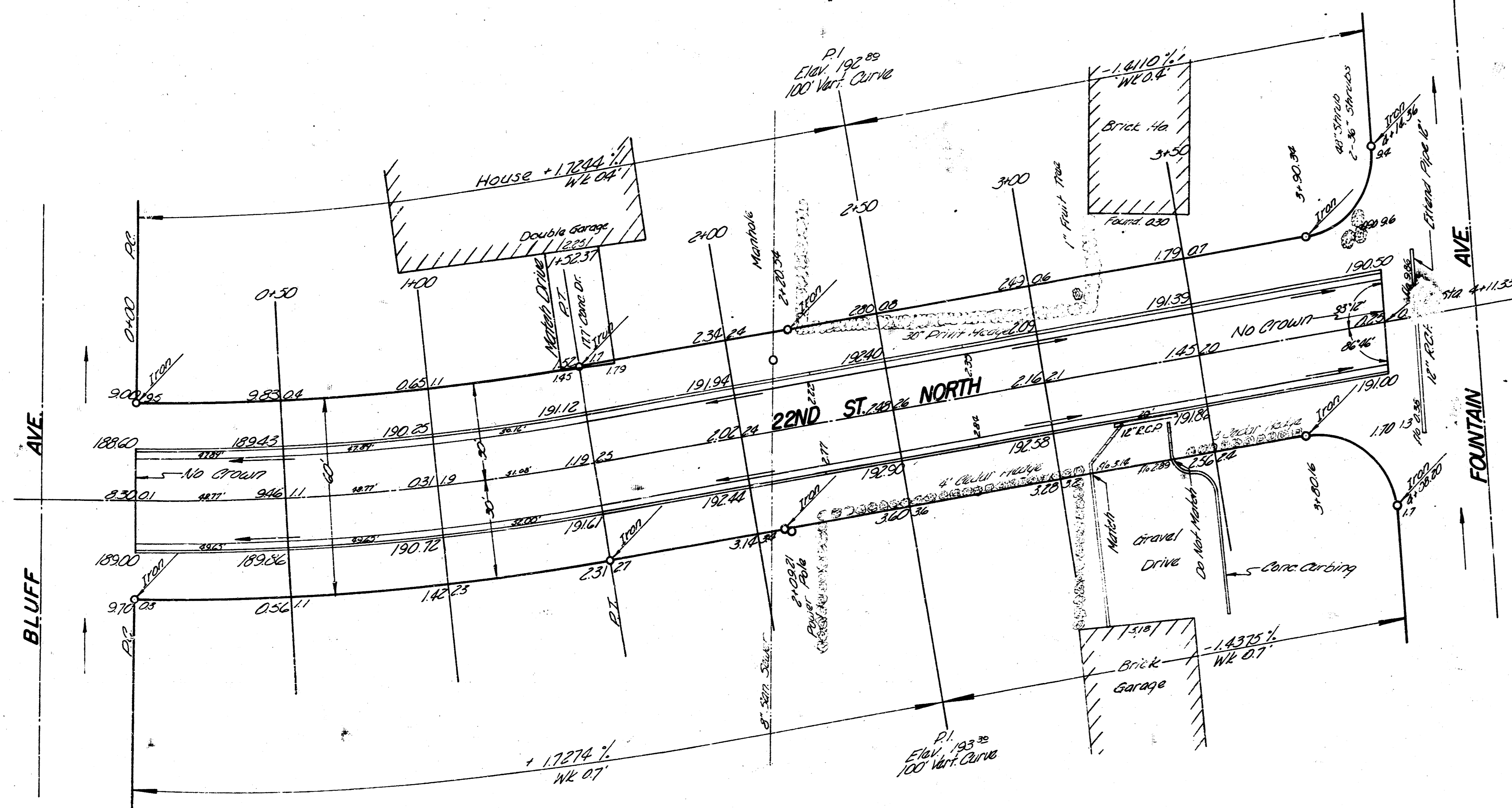


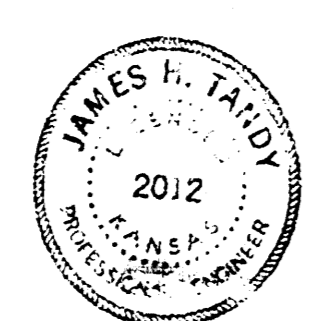
B.M. 194.18 N.E. Cor. Cont. - on 27<sup>th</sup> Ho. 2233 North Century  
 B.M. 193.22 S.E. Cor. Cont. Forth Ho. at Sta. 1+75 on N. Side 22<sup>nd</sup> St.  
 B.M. 203.51 "X" Cut on Headwall Ent. Curb N. Side 21<sup>st</sup> & 100' E. of Bluff  
 Baseline & Stationing on a line offset 9' North of South R.



**Curve Data**

R = 853.09		L = 152.37'		
Δ = 10° 14' 00"		MIN. DEPT. FT. = 204.59		
Sta.	Offrd. at Sta.	Offrd. at Sta.	Deflection	Total Deflection
0+00	-	-	-	-
0+25	23.06'	23.71'	0° 30' 22"	0° 30' 22"
0+50	-	-	-	1° 40' 44"
0+75	-	-	-	2° 31' 06"
1+00	-	-	-	3° 21' 28"
1+25	-	-	-	4° 11' 50"
1+50	-	-	-	5° 02' 12"
1+52.37	2.38'	2.25'	0° 04' 41"	5° 06' 53"

THE ENGINEER HAS REVIEWED THIS PLAN AND APPROVES IT FOR THE CITY ENGINEER'S USE.  
 JAMES L. TAYLOR  
 2012  
 PROFESSIONAL ENGINEER  
 STATE OF KANSAS  
 No. 10000  
 Checked: J.T.



Excavation  
 Prop.  
 798.9 - 799.5  
 799  
 878.8 cu yds

Sheet 1 of 3

**22ND ST. NO.**  
 E.L. BLUFF - W.L. FOUNTAIN  
**26'-2'-30' A.C.**  
 CITY OF WICHITA, KANSAS  
 B.E. SMITH CITY ENGINEER  
 DATE: APRIL '60 PROJ. C18-135