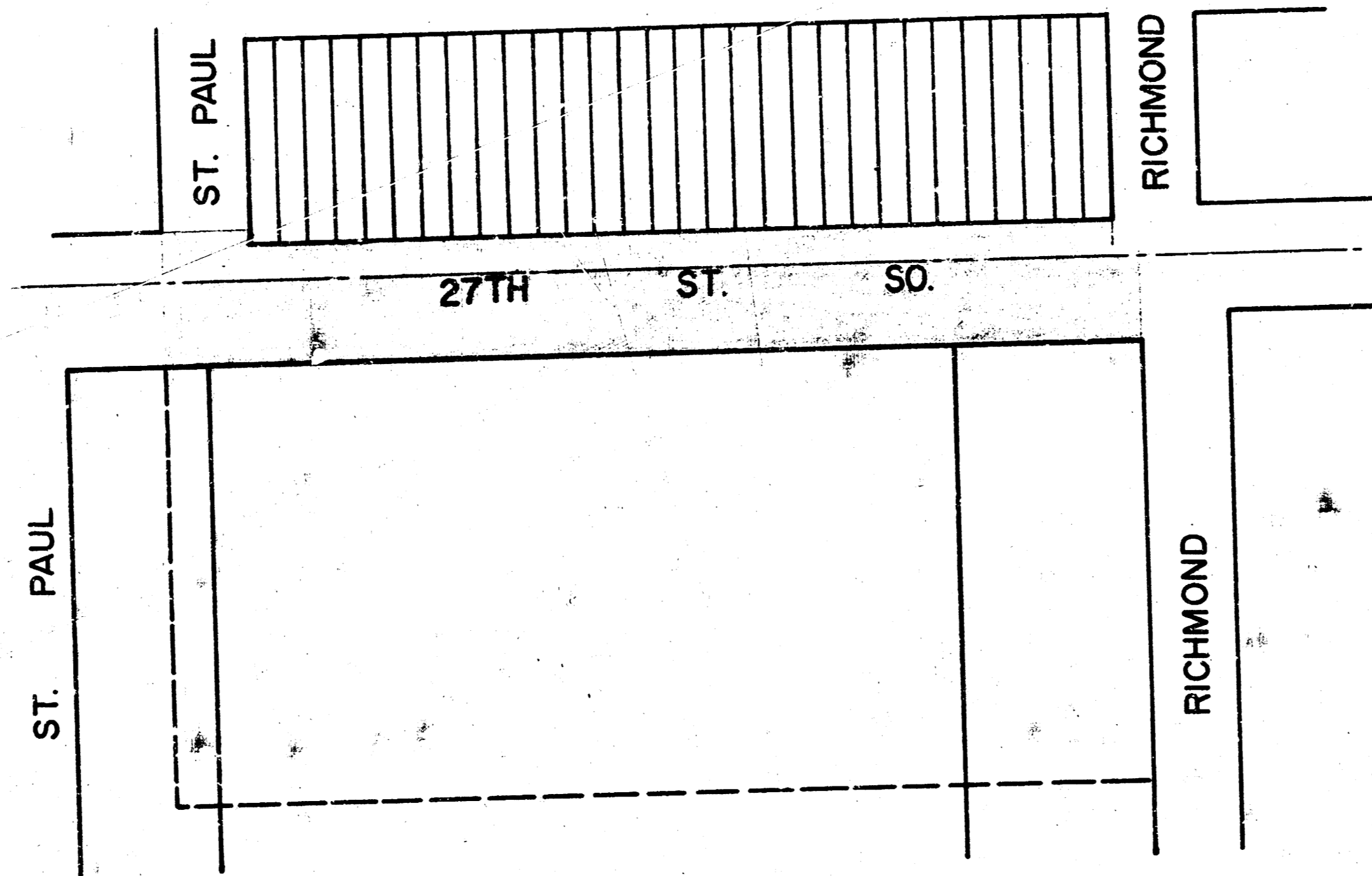


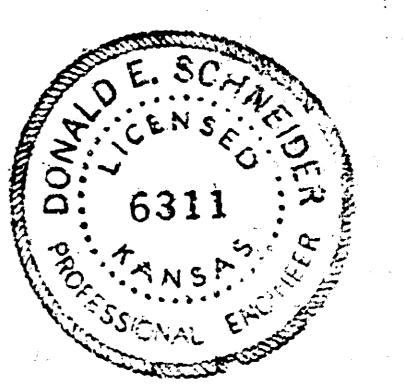
27TH ST. CO.

WORK ON THIS PROJECT SHALL BE COORDINATED WITH THE WORK ON THE OTHER SIX (6) PROJECTS THAT ARE A PART OF THIS CONTRACT. CONSTRUCTION SEQUENCING IS SUBJECT TO THE APPROVAL OF THE ENGINEER.

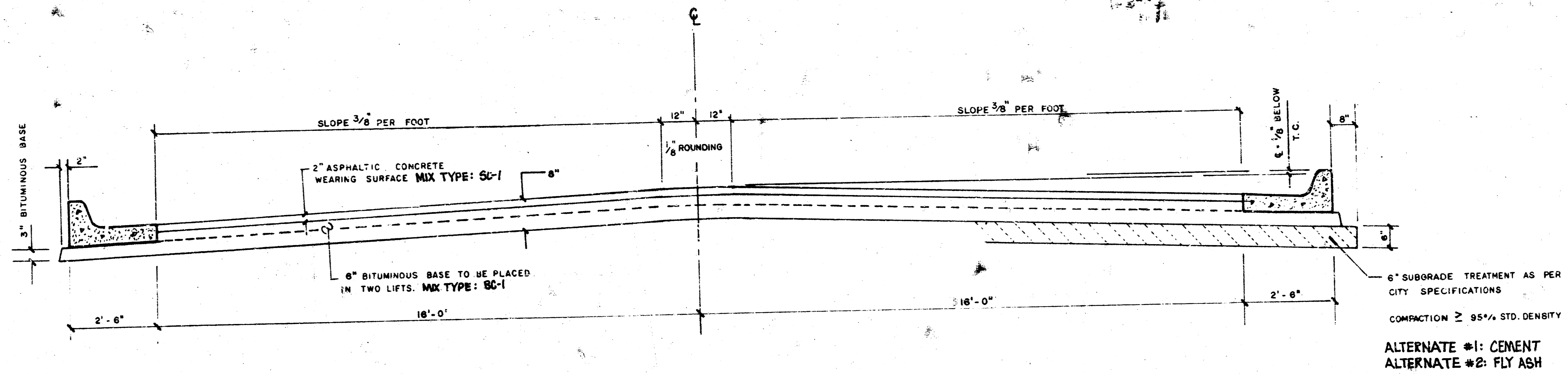


GENERAL NOTES:

- (1) TREES TO BE REMOVED ARE INDICATED ON THE PLANS; HOWEVER, ANY TREE WHICH CAN BE SAVED, AS DETERMINED BY THE FIELD ENGINEER, SHALL NOT BE REMOVED.
- (2) EARTHWORK TO MEET EXISTING GROUND ELEVATION AT RIGHT-OF-WAY LINE, UNLESS OTHERWISE NOTED ON THE PLAN WITH A NEW ELEVATION. IF A NEW ELEVATION IS SHOWN, THE EARTHWORK SHALL EXTEND ONE FOOT BEYOND RIGHT OF WAY LINE, THENCE UP OR DOWN ON A 1:1 SLOPE TO THE EXISTING GROUND SURFACE.
- (3) WIDENED CUTTER SECTION OF COMBINED CURB AND GUTTER AT INTERSECTIONS WILL NOT BE PAID FOR DIRECTLY, AND THIS COST SHALL BE CONSIDERED AS SUBSIDIARY TO THE OTHER PAY ITEMS OF WORK.
- (4) MAILBOXES WITHIN THE PROJECT LIMITS SHALL BE REMOVED AND REPLACED BY THE CONTRACTOR AS APPROVED BY THE ENGINEER. CONTRACTOR WILL BE REQUIRED TO MAKE SATISFACTORY PROVISIONS FOR MAIL DELIVERY TO PROPERTIES AFFECTED BY THIS PROJECT DURING CONSTRUCTION.
- (5) ALL ENTRANCE AND CROSS ROAD DRAINAGE PIPES WITHIN THE PROJECT LIMITS SHALL BE REMOVED BY THE CONTRACTOR, UNLESS OTHERWISE NOTED ON THE PLANS. REMOVAL OF SUCH PIPES SHALL CONFORM TO THE APPLICABLE SECTIONS OF THE STANDARD SPECIFICATIONS.
- (6) CONTRACTOR SHALL GIVE PROPERTY OWNERS ADJACENT THIS PROJECT WHOSE YARDS WILL BE LOWER THAN THE TOP OF THE NEW CURB AN OPPORTUNITY TO UTILIZE EXCESS EXCAVATED MATERIAL FROM THE PROJECT TO REGRADE THEIR YARDS TO BRAIN TO THE NEW PAVEMENT. CONTRACTOR WILL BE REQUIRED TO DUMP AND SPREAD THE EXCESS MATERIAL AS REQUIRED BY THE STANDARD SPECIFICATIONS. ANY DIRT IN EXCESS OF CONSTRUCTION REQUIREMENTS AND PROPERTY OWNER REQUESTS SHALL BE DELIVERED AND SPREAD ON THE SCHOOL BOARD PROPERTY SOUTH OF 27TH STREET AND ST. PAUL AT NO ADDITIONAL COST. CONTACT LEON PAYNE, 832-1211, EXT. 274, FOR INSTRUCTIONS FOR DUMPING ON SCHOOL BOARD PROPERTY.
- (7) CONTRACTOR TO BID ONLY ONE SUB-GRADE TREATMENT ALTERNATE. ALTERNATE CHOSEN BY THE SUCCESSFUL BIDDER SHALL BE USED FOR CONSTRUCTION ON THIS PROJECT.
- (8) THE CONTRACTOR SHALL SEQUENCE HIS WORK TO ELIMINATE THE NEED FOR "OVERLAYS." IF DIRT IS TO BE DELIVERED TO THE SCHOOL BOARD PROPERTY.
- (9) REMOVAL OF EXCESS PAVEMENT PLACED IN THE CONSTRUCTION OF THE ST. PAUL AND THE RICHMOND PAVING PROJECTS SHALL BE CONSIDERED INCIDENTAL TO EXCAVATION.



PROJECT DESCRIPTION	
27TH ST. CO.	
W.L. ST. PAUL To W.L. RICHMOND	
PROJECT NUMBER	
472-76-245-81166-000-001	
BOOK NO. DCD 56	APPROVED BY
DRAWN BY VRH	DATE
	REVISED
CITY OF WICHITA	
DEPARTMENT OF ENGINEERING	
DIRECTOR OF ENG. CITY ENGINEER	
R. W. BRUGGEMAN	
SCALE	
1" = 20'	



TYPICAL SECTION

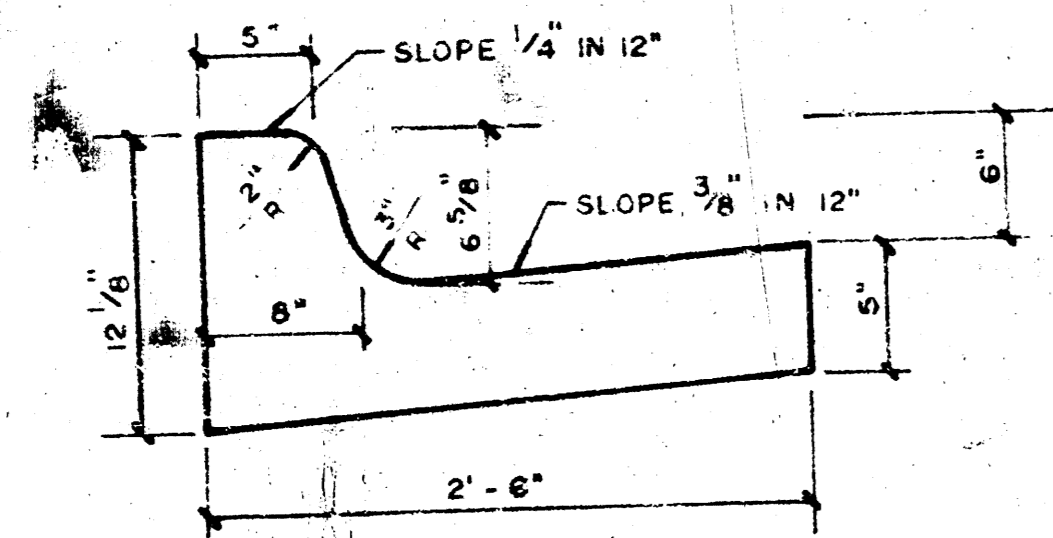
37' ASPHALTIC CONCRETE PAVEMENT WITH BITUMINOUS BASE

A TACK COAT OF EMULSIFIED ASPH(SS-1H or CSS-1H) SHALL BE APPLIED AT AN APPROXIMATE RATE 0.05 GALLONS PER SQ YD BETWEEN LIFTS OF ASPHALTIC MATERIALS WHEN ORDERED BY THE ENGINEER. TACK COAT WILL NOT BE PAID DIRECTLY AND SHALL BE CONSIDERED AS SUBSIDIARY TO PRICE OF ASPHALTIC PAVEMENT.

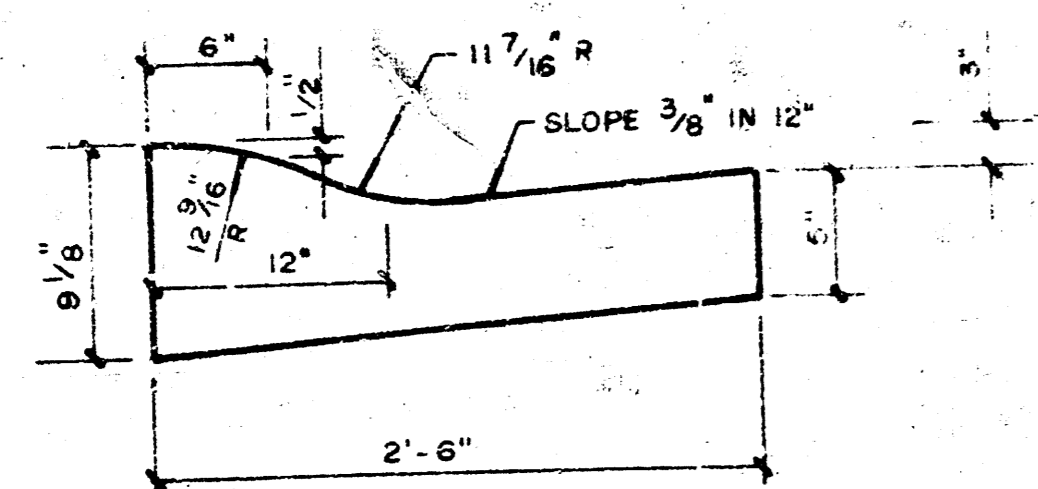
BITUMINOUS BASE AND ASPHALTIC CONCRETE WEARING SURFACE SHALL BE PLACED WITH A LAYDOWN MACHINE HAVING AUTOMATIC CONTROLS FOR CROWN AND GRADE. CONSTRUCTION JOINTS IN EACH LIFT SHALL BE STAGGERED A MINIMUM DISTANCE OF 1' WITH JOINTS IN PRECEDING LIFTS AND PLACED SUCH THAT A JOINT WILL BE CONSTRUCTED ON THE CENTERLINE IN THE TOP LIFT.

THE A.C. PAVEMENT BETWEEN THE COMBINED CURB AND GUTTER SHALL BE PAID AS SQ YDS 8" A.C. PAVEMENT 6" BITUMINOUS BASE 1. THE BITUMINOUS BASE UNDER THE COMBINED CURB AND GUTTER SHALL BE PAID AS SQ YDS 3" BITUMINOUS BASE.

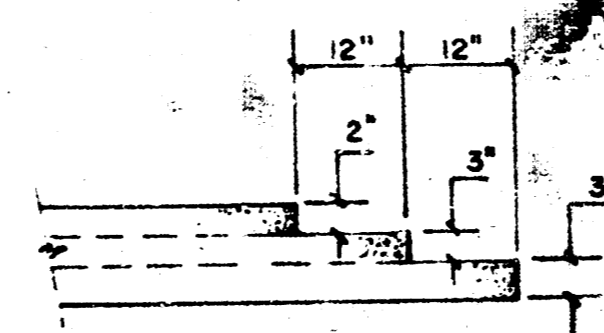
COMBINED CURB & GUTTER



ROLL TYPE CURB & GUTTER

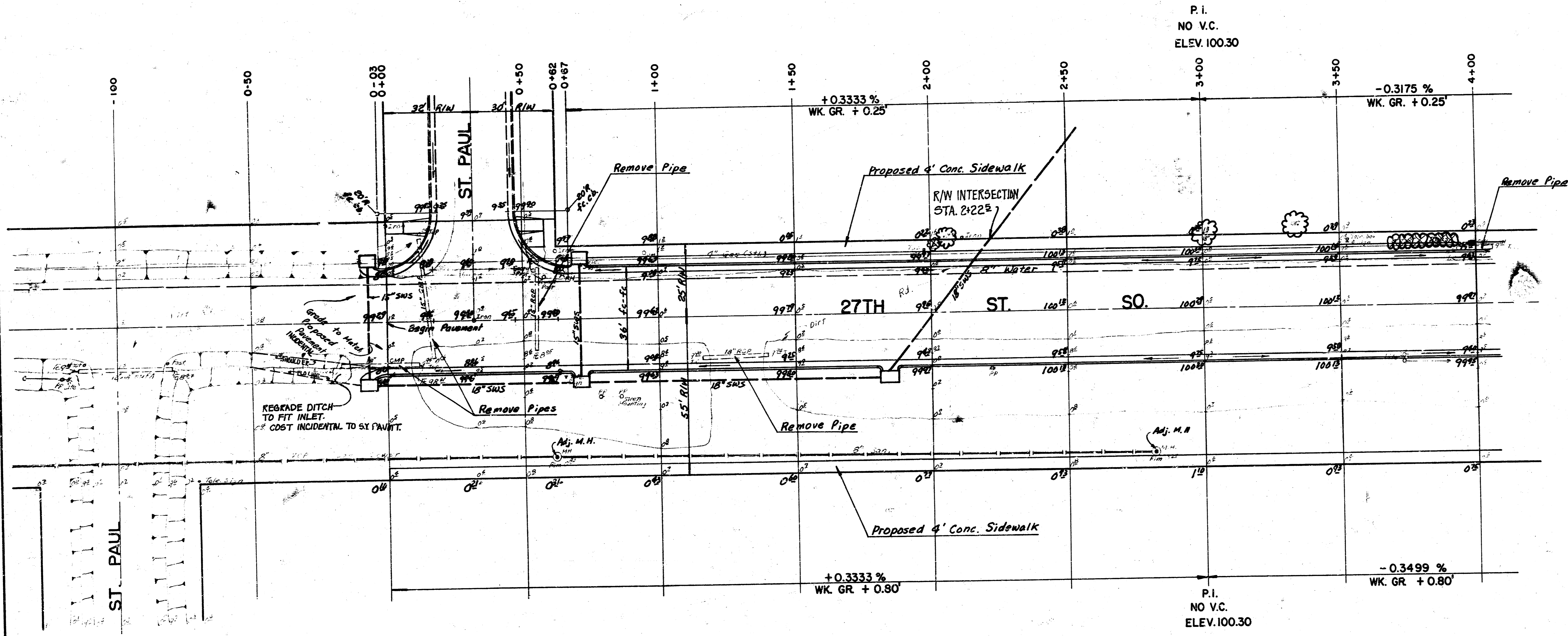


DETAIL OF TRANSVERSE CONSTRUCTION JOINTS



TRANSVERSE CONSTRUCTION JOINTS SHALL BE CONSTRUCTED IN FLEXIBLE BASE PAVEMENTS AT LOCATIONS WHERE PAVEMENT TEMPORARILY ENDS TO FACILITATE FUTURE PAVEMENT CONSTRUCTION AS SHOWN BY DETAIL. THE COST OF CONSTRUCTING THE TRANSVERSE CONSTRUCTION JOINTS SHALL NOT BE MEASURED OR PAID FOR DIRECTLY BUT SHALL BE INCLUDED IN THE BID PRICE FOR SQUARE YARDS OF A.C. PAVEMENT.

B.M. 101.72 RR Spt. in W. Fc. PP at SE Cor. Casado & St. Paul
 B.M. 99.62 Meridian & 27th St. So., City Std. Disc. 42.5' N. & 44' E. of Both.



*Note: Contractor shall construct Asphalt Flume with curbing from End of combined Curb & Gutter to Inlet. Cost is subsidiary to Project.

INTERSECTION QUANTITIES

— S.Y. —	Concrete Pavement
188 S.Y.	2" Asphaltic Conc. Pavement (6" Bituminous Base)
15 S.Y.	3" Bituminous Base
52 L.F.	Comb. Curb & Gutter
— L.F.	Integral Curb
— S.F.	4" Wheelchair Ramp
— S.F.	4" Walk
187 C.Y.	Excavation
— C.Y.	Compacted Fill
— Lbs.	Reinforcing Steel
203 S.Y.	Manipulation
45 Tons	Lime or Cement
— S.Y. V.G.	Concrete & Asphaltic Concrete Base

Earth Work

	Excavation	Compacted Fill
	1785.9	19.8
Add 10%	178.6	2.0
	1964.5	21.8
Manipulation	2931 SY	
Add 3%	88	
	3019 SY	

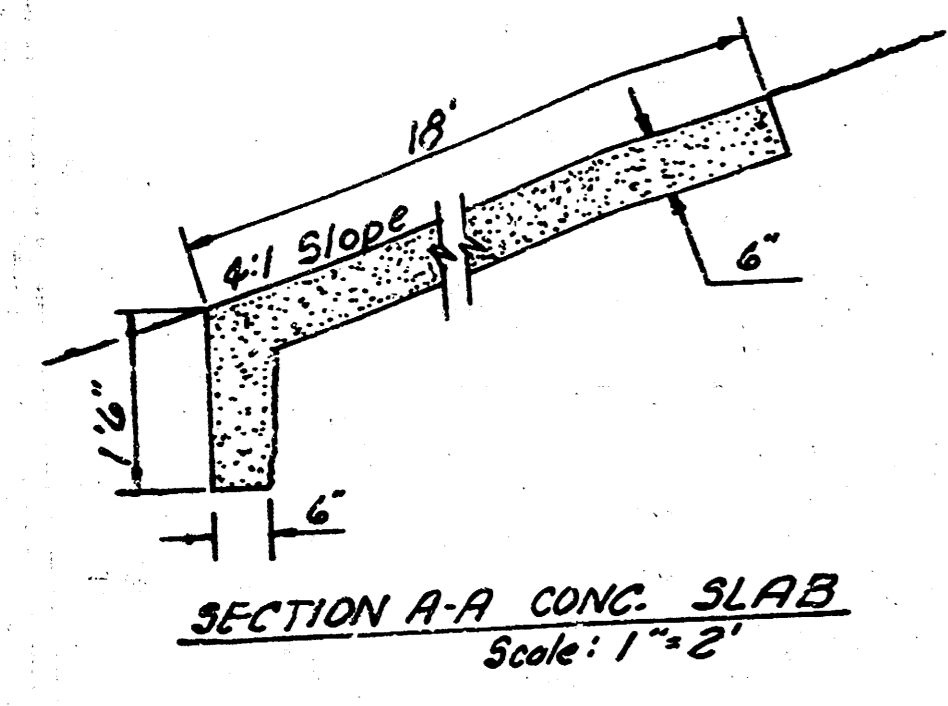
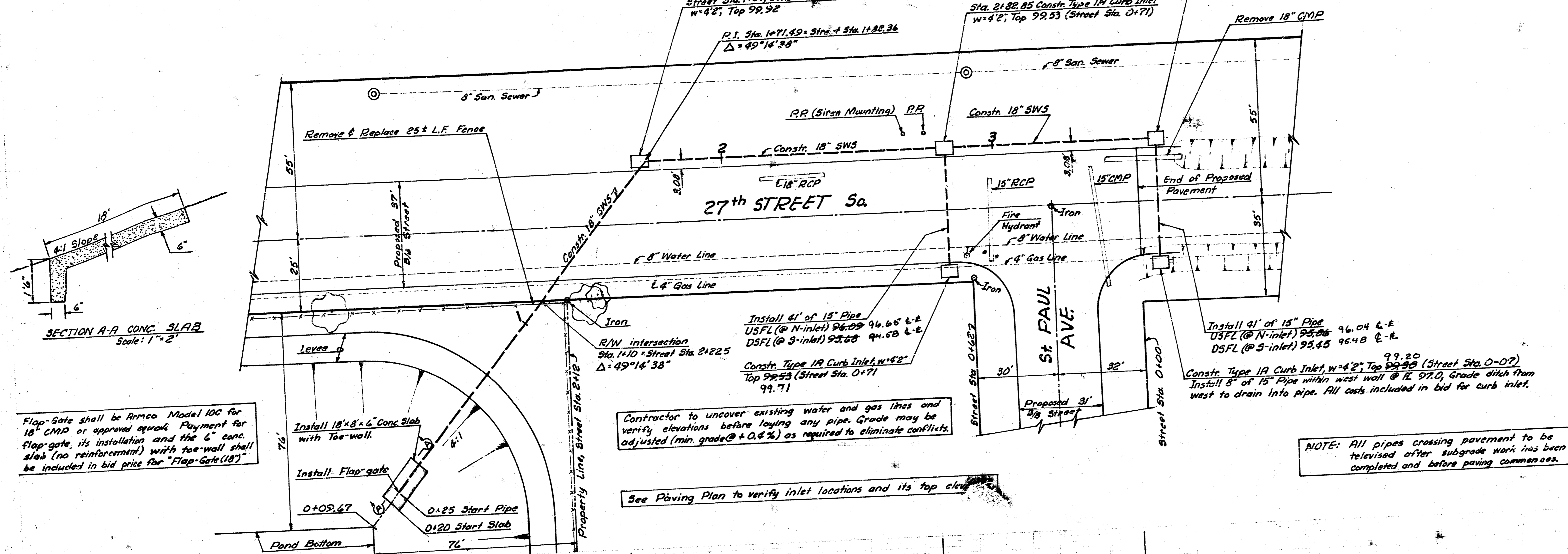
NO MORE THAN 6-20' DRIVES ON THIS PROJECT.

THE CONTRACTOR SHALL BE RESPONSIBLE FOR PRESERVING PROPERTY IRONS. THE CONTRACTOR SHALL BE REQUIRED TO RE-ESTABLISH ANY PROPERTY IRONS WHICH ARE DAMAGED OR DESTROYED BY HIS CONSTRUCTION OPERATIONS. SUCH IRONS SHALL BE RE-ESTABLISHED BY A LICENSED LAND SURVEYOR OR A LICENSED PROFESSIONAL ENGINEER IN ACCORDANCE WITH STATE LAWS.

CAUTION
UNDERGROUND UTILITIES
 Please check with K.G.F.E. or Southwestern Bell Telephone Co. for Location

PROJECT DESCRIPTION
27TH ST. SO.
 W.L. ST. PAUL TO W.L. RICHMOND
 PROJECT NUMBER
 472-76-245-81166-000-000-001 3/7

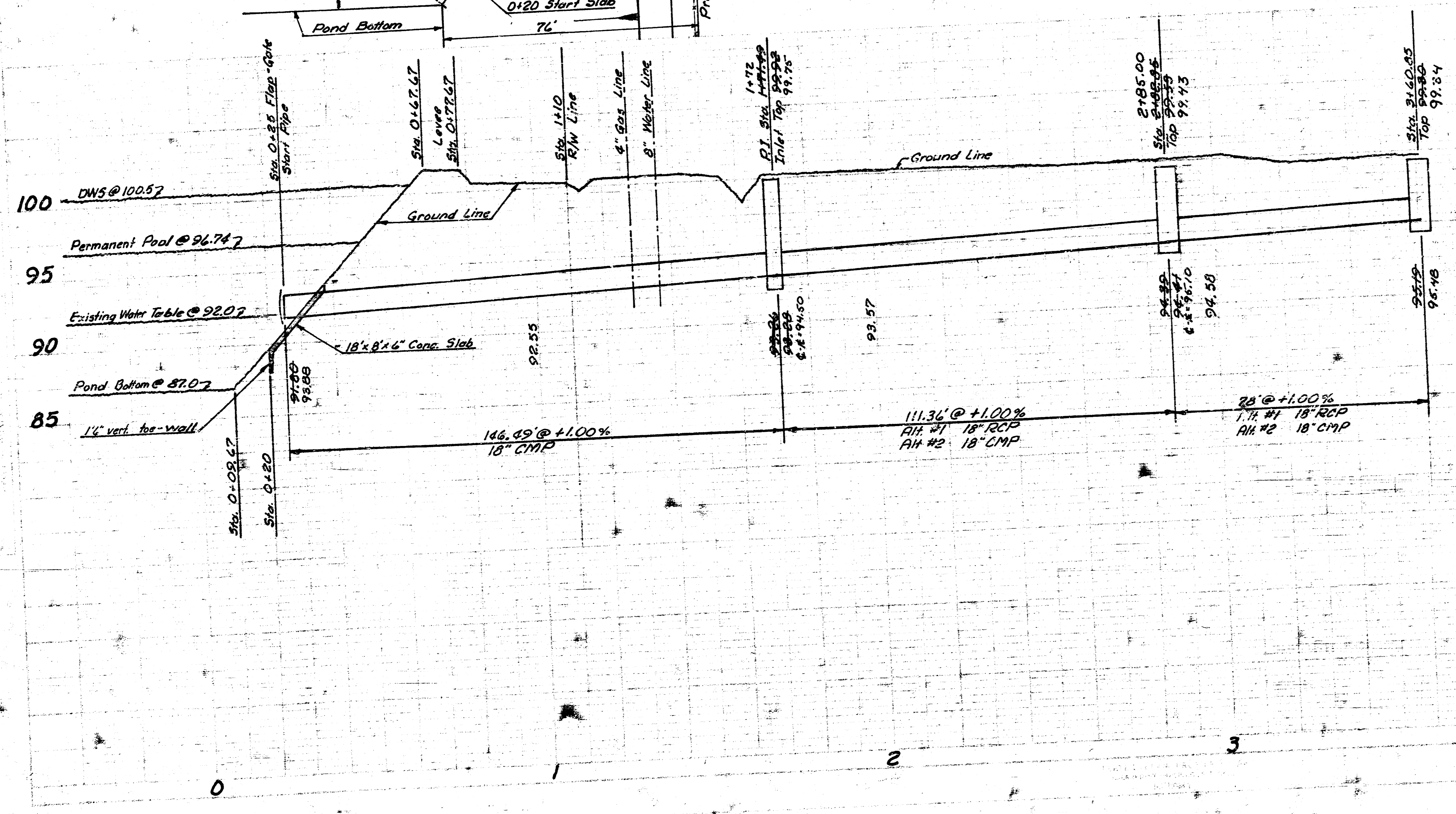
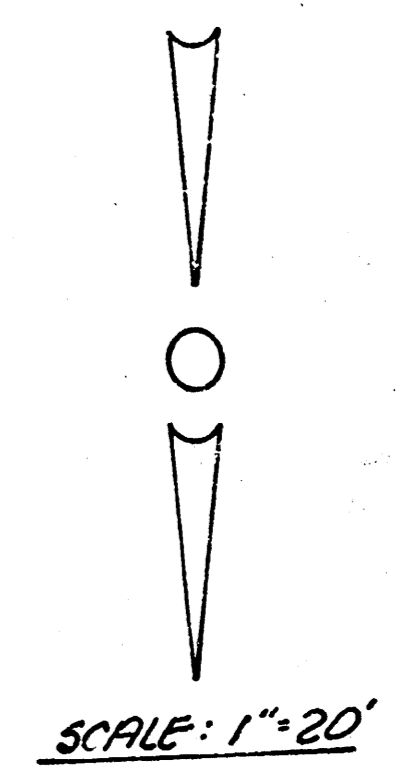
BM 101.72 R.R. 3pk in W to RR @ S.E. cor. Casado & St. Paul.
 BM 99.62 Meridian of 27th St. Sa., City Sd., 42.5' N. of 44 E. of both



Flap-Gate shall be Amco Model 100 for 18\"/>

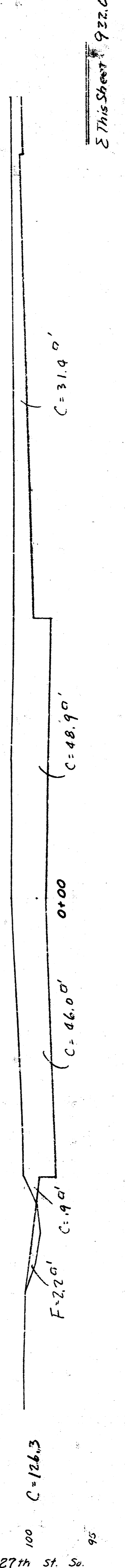
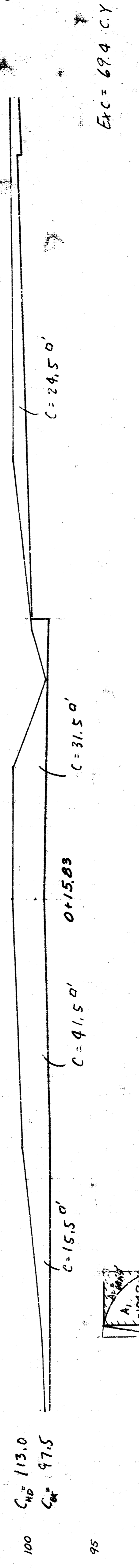
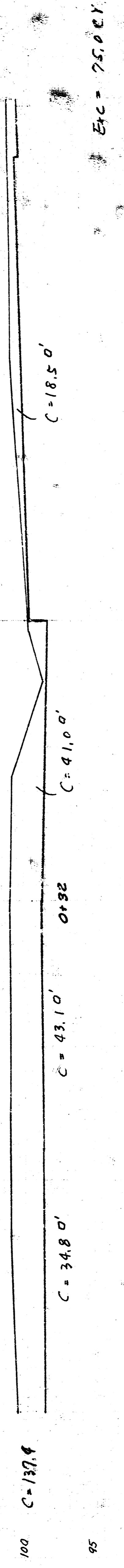
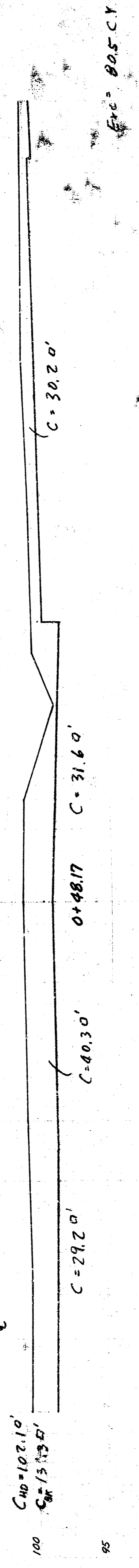
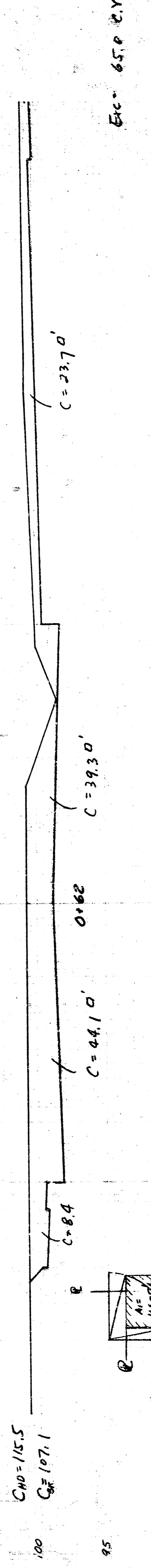
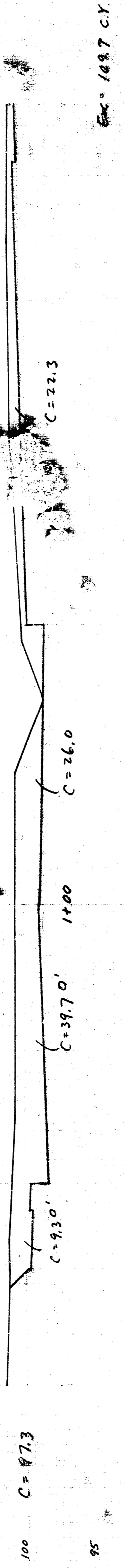
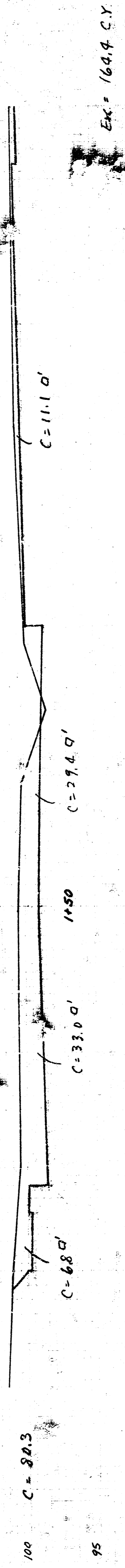
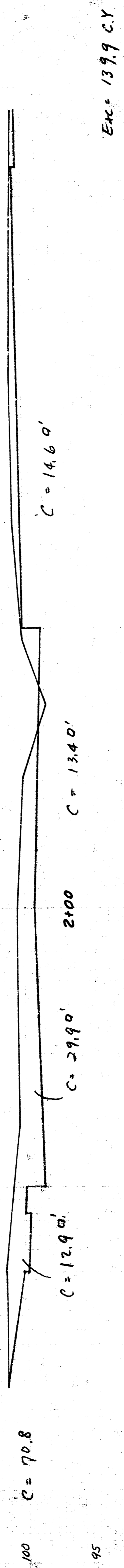
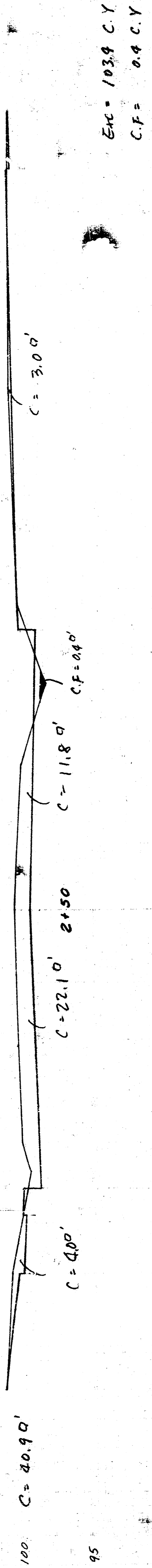
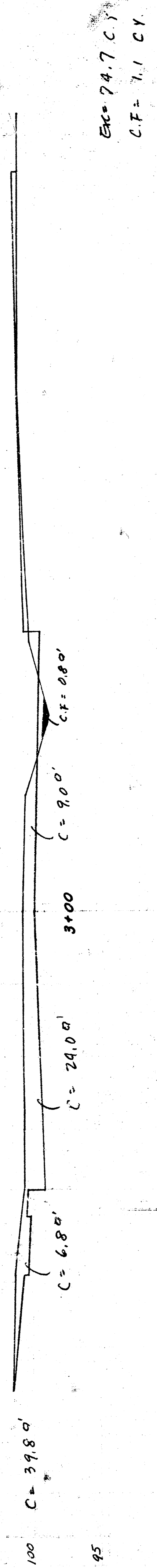
Contractor to uncover existing water and gas lines and verify elevations before laying any pipe. Grade may be adjusted (min. grade @ +0.4%) as required to eliminate conflicts.

NOTE: All pipes crossing pavement to be televised after subgrade work has been completed and before paving commences.

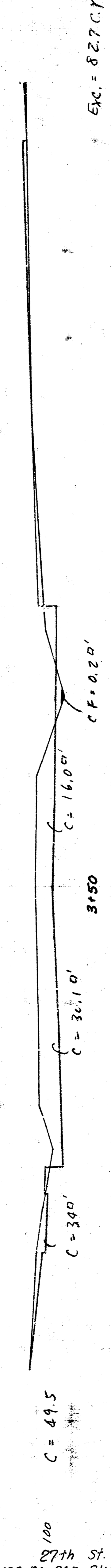
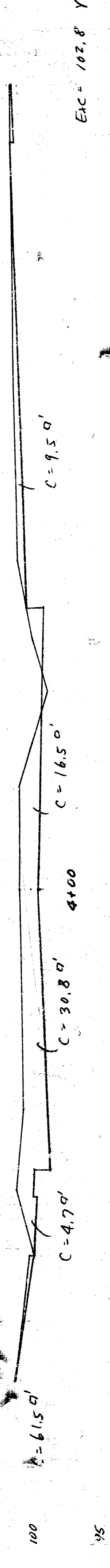
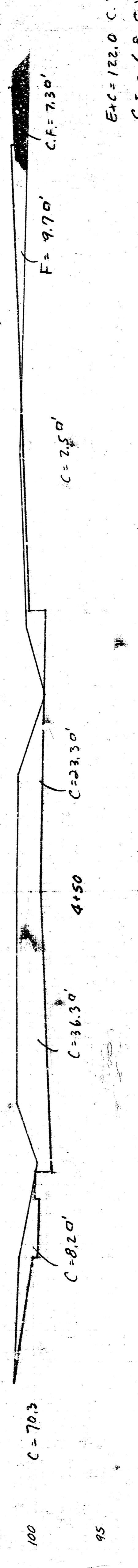
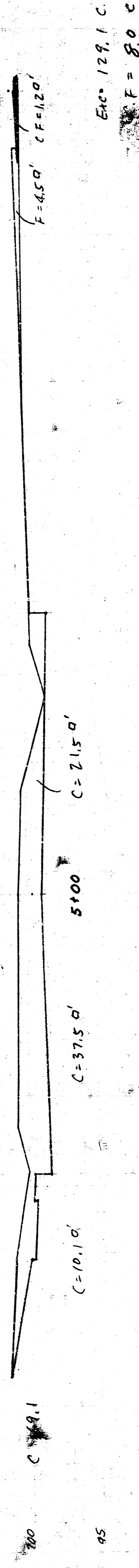
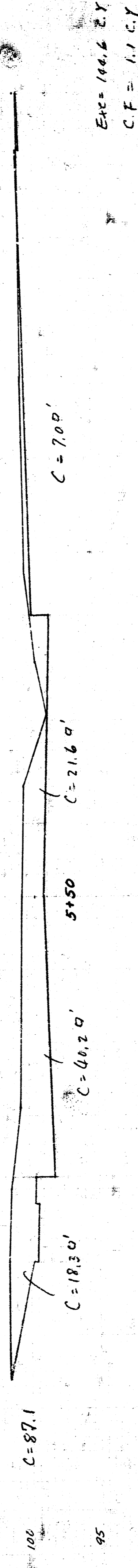
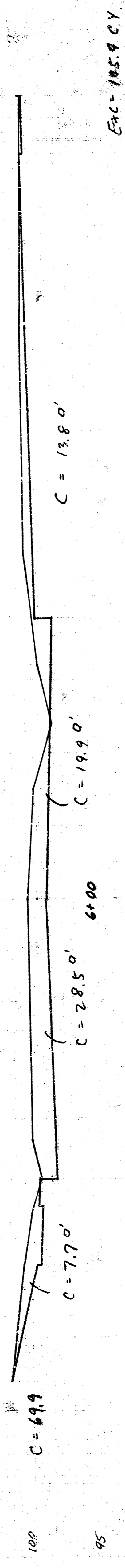
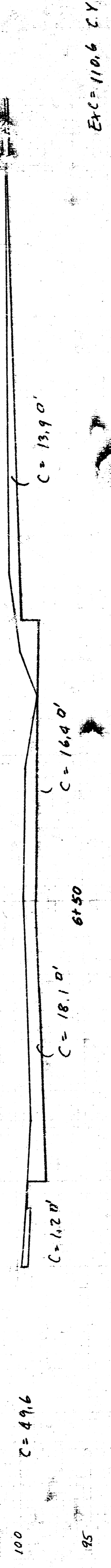
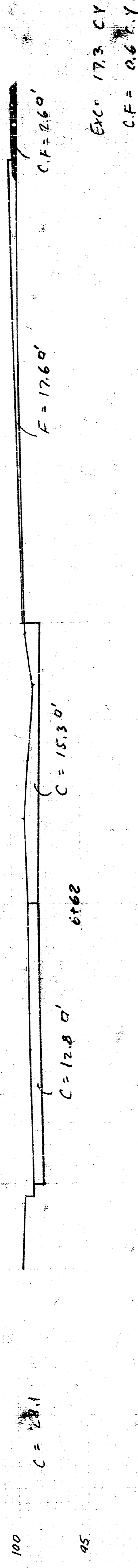
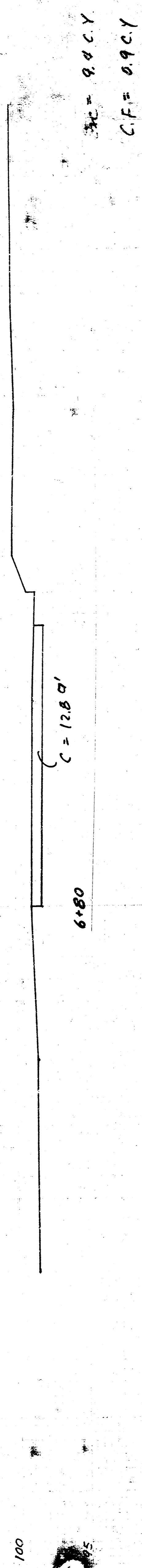


PROJECT DESCRIPTION

PROJECT NUMBER



Total Exc. = 1785.9 C.Y.
Compacted Fill = 19.8 C.Y.



Σ This Sheet = 863.9