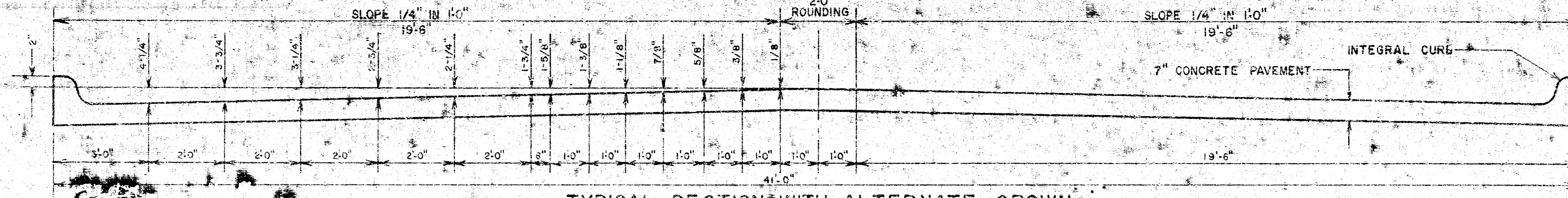
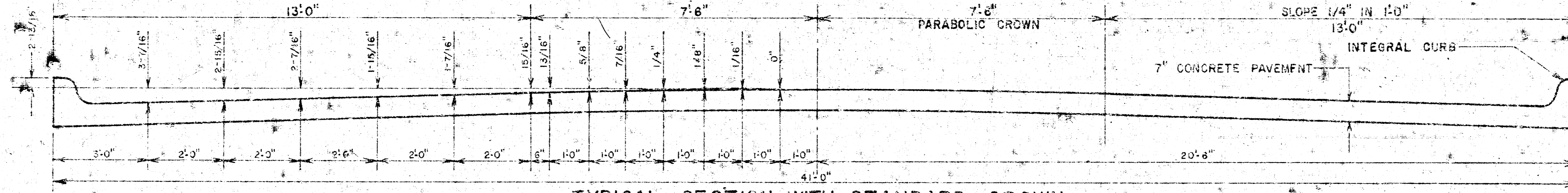


27TH ST. SO.
WL. RICHMOND-CL. MERIDIAN
PROJ. NO. DAKC 571004
CITY OF WICHITA, KANSAS
R. W. LINN, CITY ENGINEER

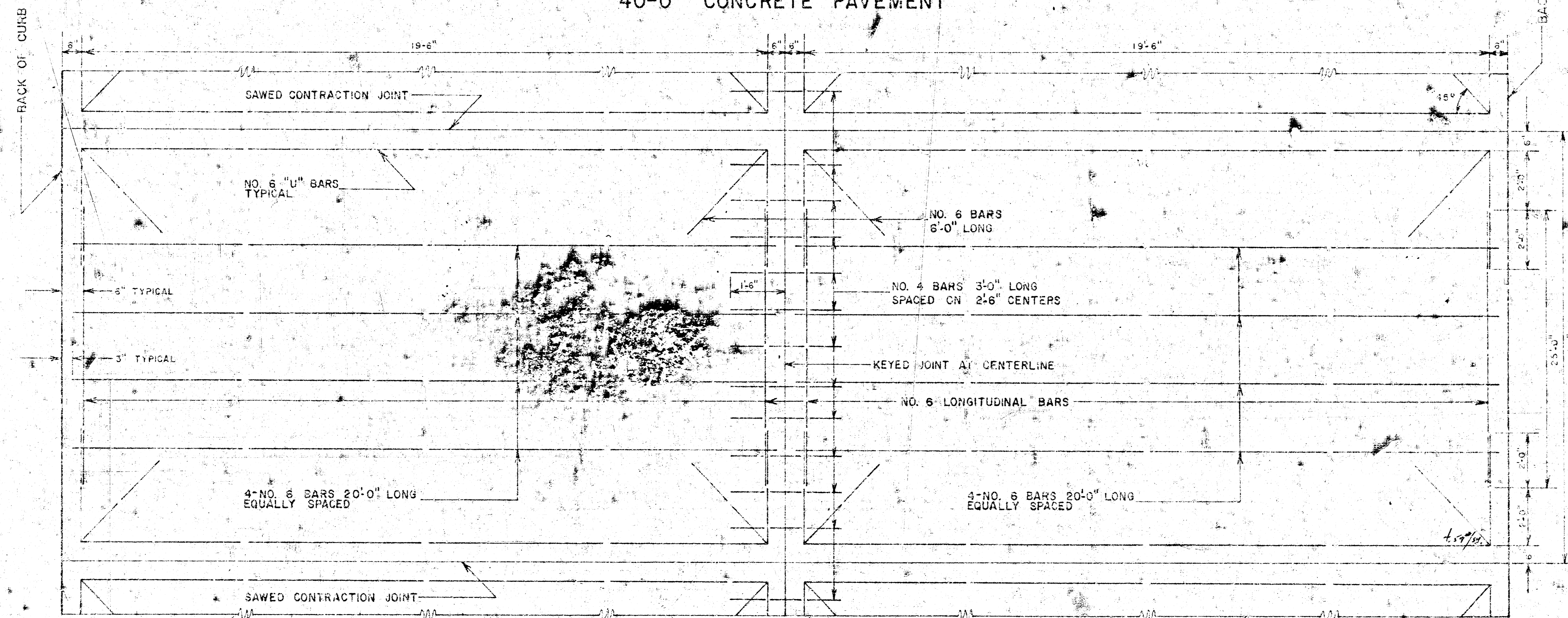
SYMMETRICAL ABOUT CENTERLINE
 2'-0" ROUNDING



TYPICAL SECTION WITH ALTERNATE CROWN
40'-0" CONCRETE PAVEMENT



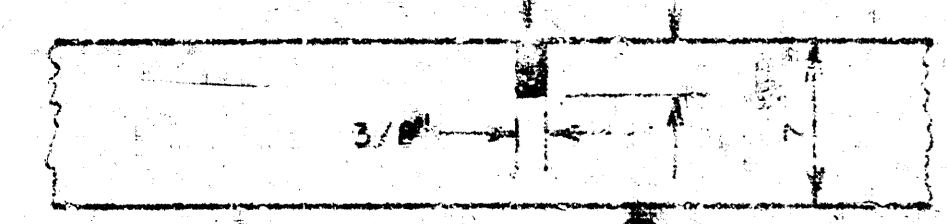
TYPICAL SECTION WITH STANDARD CROWN
40'-0" CONCRETE PAVEMENT



TYPICAL STEEL PATTERN

SAWED CONTRACTION JOINTS ARE TO BE CONSTRUCTED AT 30'-0" INTERVALS EXCEPT WHERE AN EXPANSION JOINT IS USED.

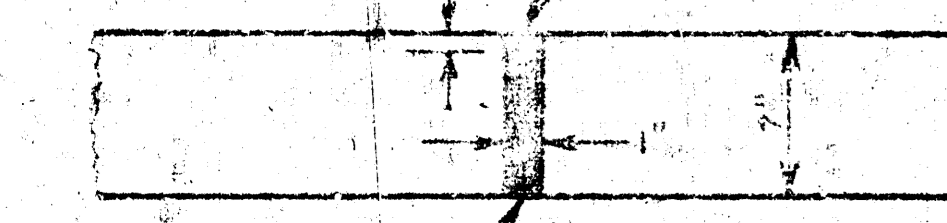
SEAL WITH SPECIFIED JOINT SEALER



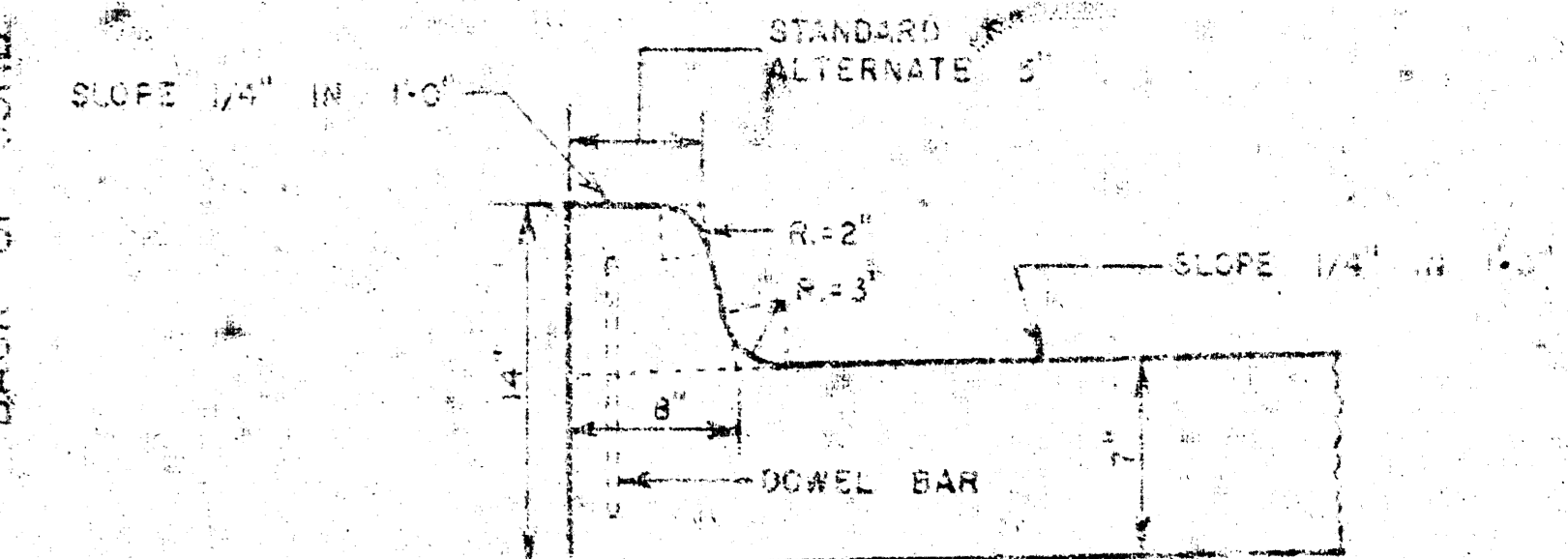
DETAIL OF SAWED CONTRACTION AND LONGITUDINAL JOINTS

EXPANSION JOINTS ARE TO BE CONSTRUCTED AT 120'-0" INTERVALS

SEAL WITH SPECIFIED JOINT SEALER

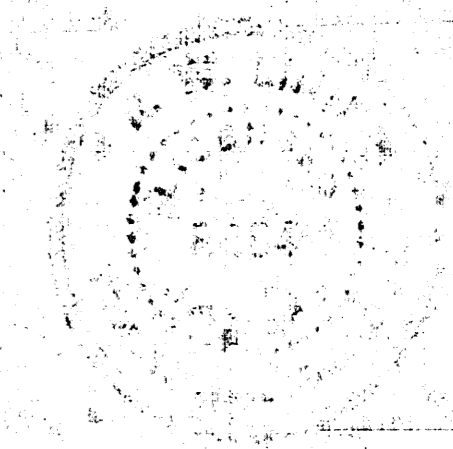


DETAIL OF EXPANSION JOINT

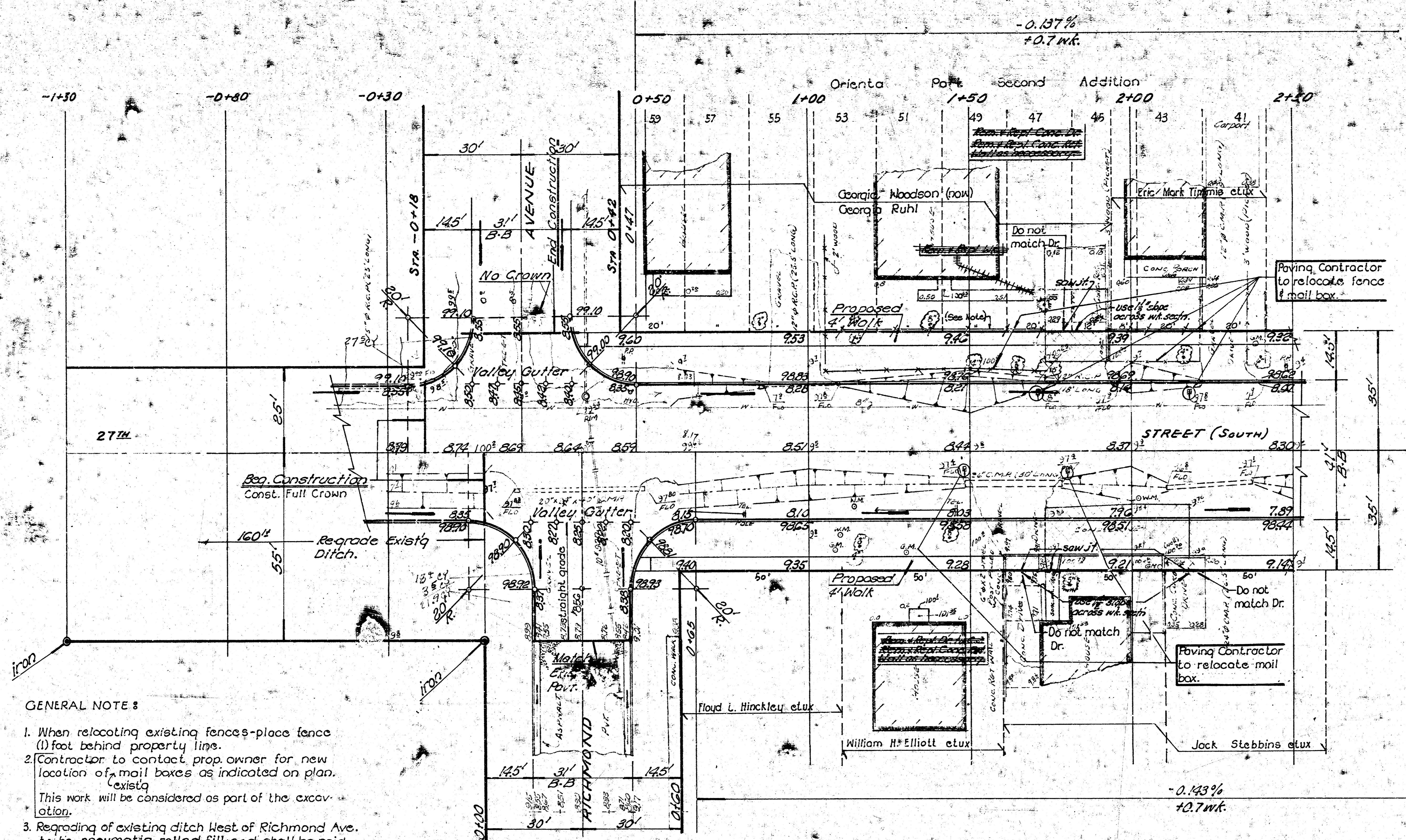


DETAIL OF INTEGRAL CURB

INTEGRAL CURB SHALL BE CUT THROUGH TO PAVEMENT IN UNIFORM LENGTHS OF NOT MORE THAN TEN FOOT INTERVALS BETWEEN EXPANSION JOINTS. EXPANSION JOINTS HAVING THE SAME THICKNESS AS THE EXPANSION JOINTS IN THE PAVEMENT SHALL BE CONSTRUCTED IN THE INTEGRAL CURB AT THE SPECIFIED LOCATIONS. NUMBER 4 OR NUMBER 6 DOWELS SHALL BE INSTALLED IN THE INTEGRAL CURB AT SHOWN ON APPROXIMATELY 2'-6" CENTERS. PAVEMENT GRADES SHOWN ON PLANS ARE FOR STANDARD CROWN.



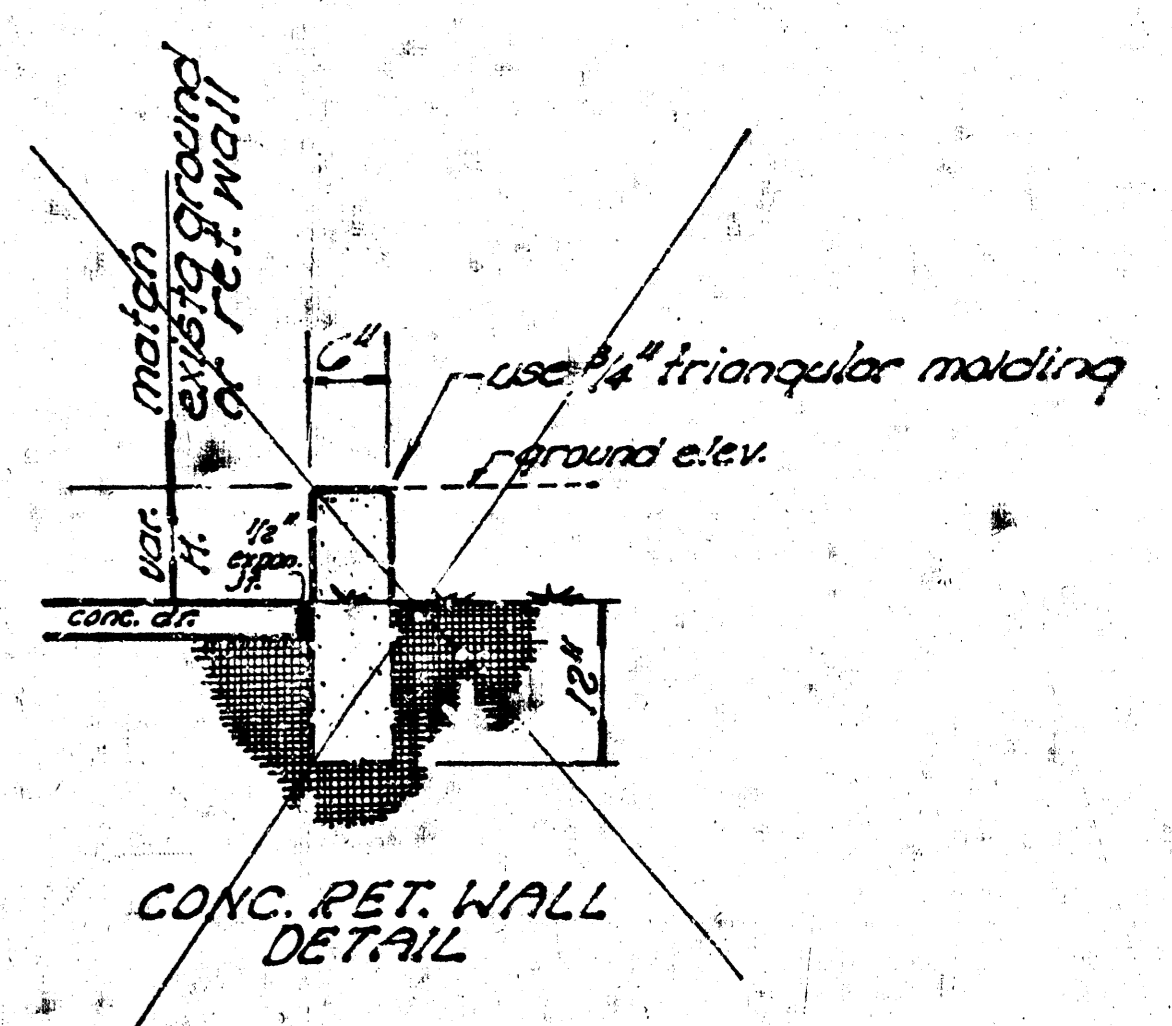
ENGINEER'S DIVISION
 DESIGN & CONSTRUCTION
 CITY OF WICHITA



SCALE: 1"=20'
 B.M. 99.62 STANDARD 42.5' N. & 44.0' E.
 & MERIDIAN & 27TH STREET SOUTH.

IRON STA -1+30 55° Rt.
 IRON STA. 0+00 55° Rt.

- GENERAL NOTE :**
1. When relocating existing fences-place fence (1) foot behind property line.
 2. Contractor to contact prop. owner for new location of mail boxes as indicated on plan. This work will be considered as part of the excavation.
 3. Regrading of existing ditch West of Richmond Ave. to be pneumatic-rolled fill and shall be paid as C.Y. Compacted Fill. Field Engineer to take cross-sections before and after const.
 4. Tons of Cement for sub-grade treatment was figured @ 14.73 Lbs. per SY and shall not exceed this amount in the const. of this project.
 5. Grading of Approaches to Richmond Ave. to be incidental to project.



~~NOTE TO ENGR. & CONTRACTOR - Contact Prop. Owners before any work is done on private prop. A letter authorizing this const will be required from prop. owner and placed on file with the City Engr. Dept.~~

EARTHWORK QUANTITIES

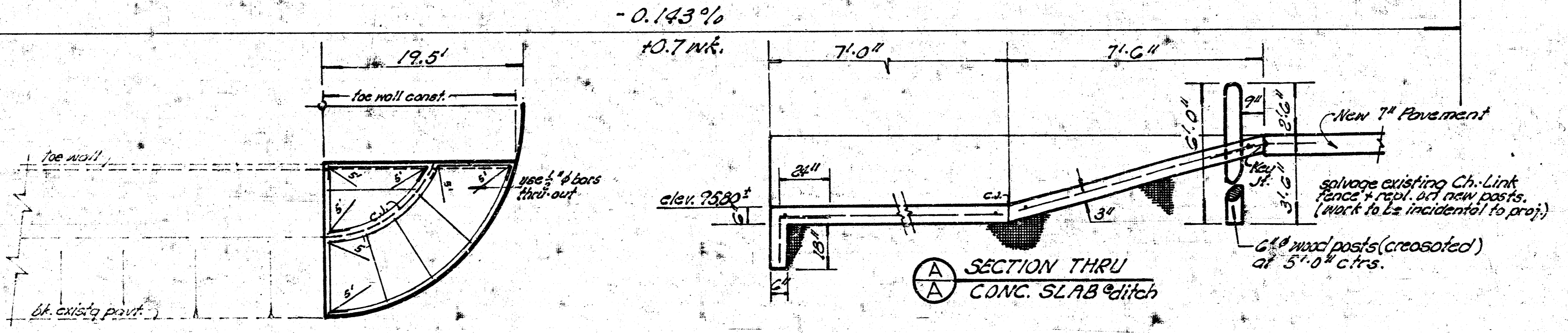
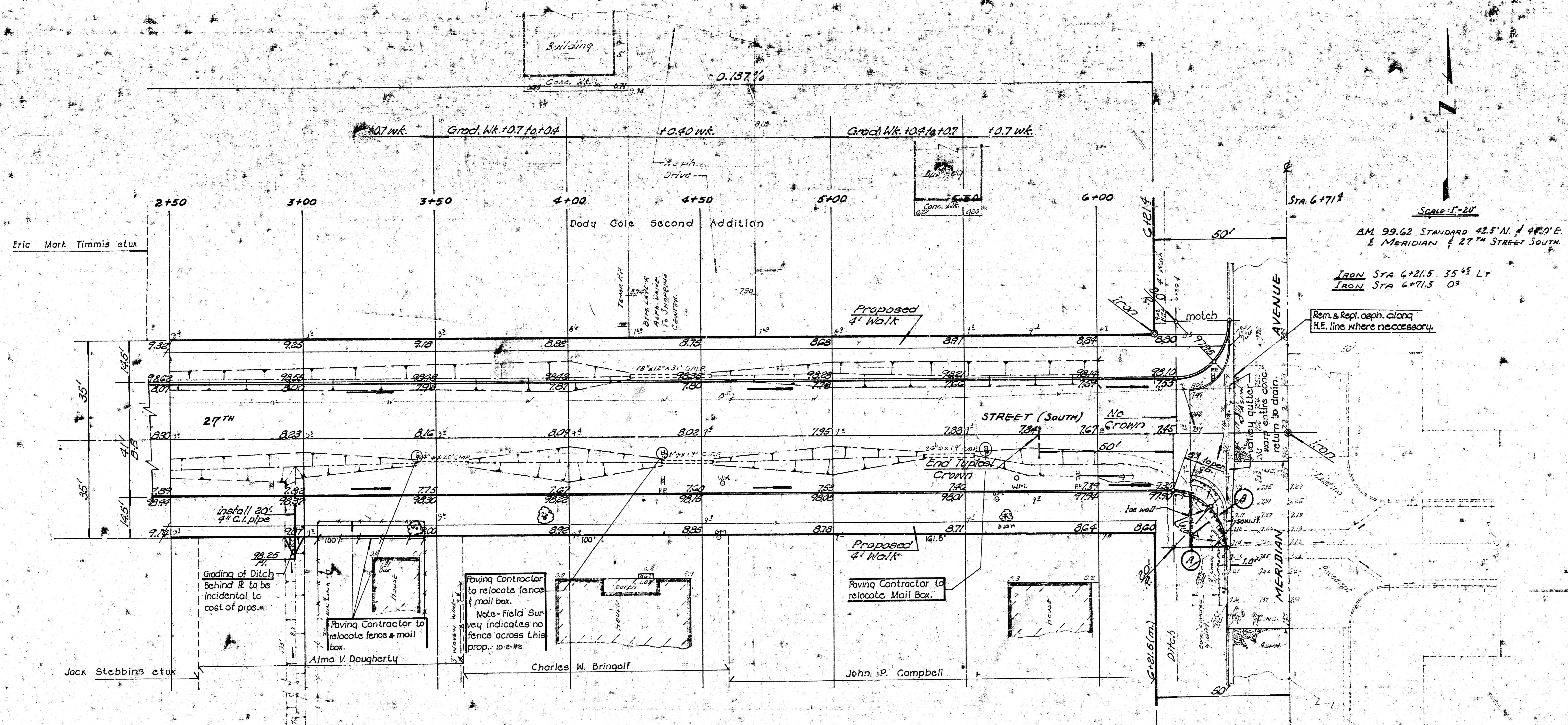
Excavation	Comp. Fill
2139.7 CY	5 CY
219.0 @ +10%	35 CY (Ditch)
240.7 CY	34 CY

Use Cement Treated Sub-grade (See General Notes)

27TH STREET (So.)
 FROM: W.L. RICHMOND AVENUE
 TO: E MERIDIAN AVENUE
 7" CONCRETE 41' & CURB
 R.W. LINN CITY ENGINEER
 CITY OF WICHITA
 DATE: Aug. 1972
 PROJECT NO: DAKC 571004

2/4

14-Eng
 1-writer



14-Eng
1-11-78

3/1