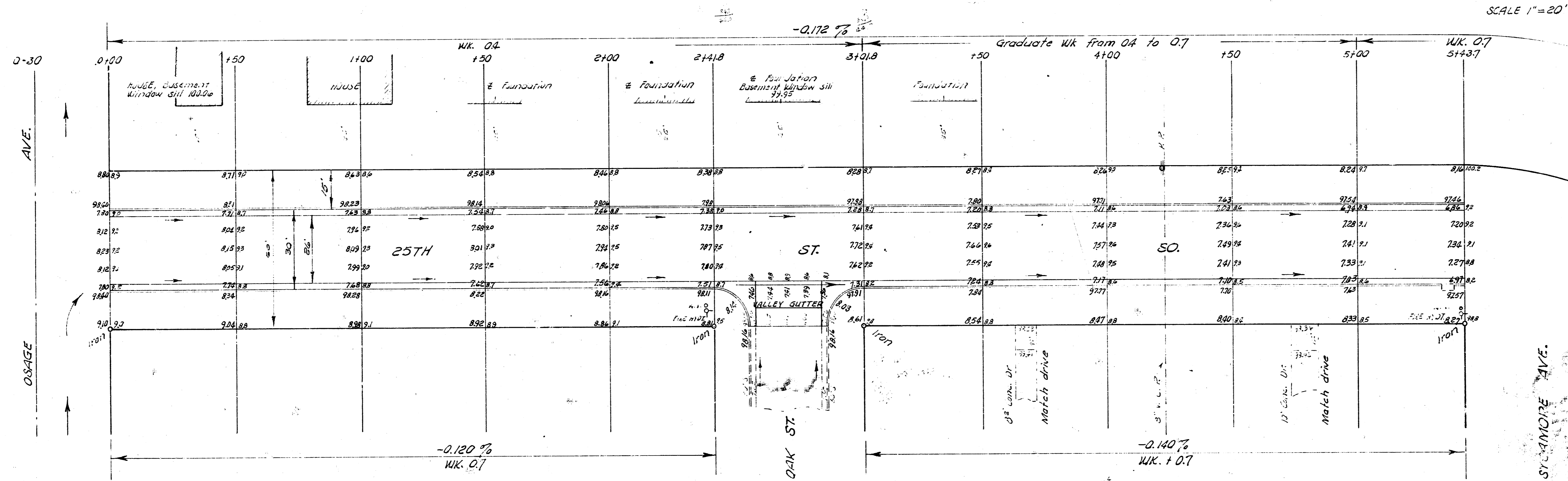


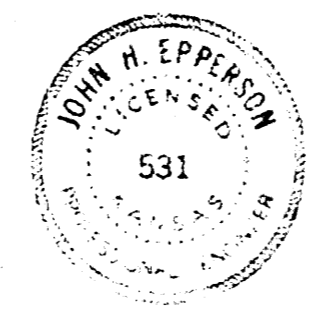
B. M. 100.32 Step bench ES Mulberry, near SL 25th St. So. EL Sycamore.
 B. M. 75.15 "R" in Ritchie E. Co Oak SL 25th St. So.
 B. M. 93.725 SW 1st Conc step Sta. # 2752 So. Oak.
 Base = E 25th St. So. from 0100 to 5173.7

SCALE 1"=20'



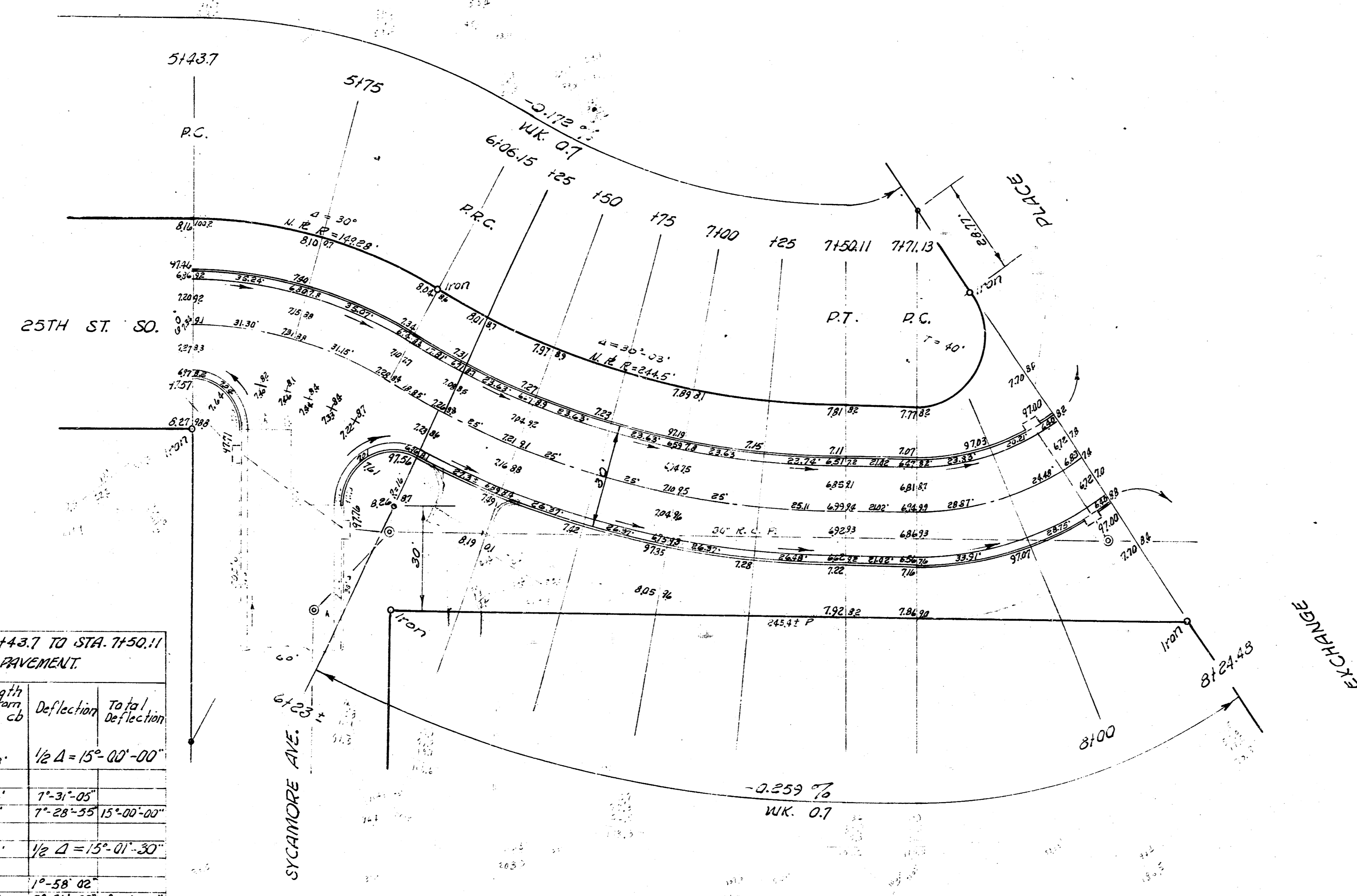
C.A. ST. 11/20/58
 C.M. 11/20/58
 L.L.E.

Earth work (Excavation)			
City	Prop.	10%	10%
219.8	2531.1		
220	253.1		
241.8 cu yds.	2,784.2 cu yds.		



25TH ST. SO.
 EL OSAGE TO WL EXCHANGE PLACE
 26'-2"-30' A.C.
 CITY OF WICHITA, KANSAS
 B. E. SMITH CITY ENGINEER
 DEC. 1958, PROJ. NO. C15-102

NOTE: stationing on the proposed pavement from sta. 5143.7 to sta. 8124.48.



CURVE DATA STA. 7171.13 TO STA. 8124.48
STATIONING ON THE PAVEMENT
R = 85.94' 1/2 Δ = 17°-47'-00"

STATIONS	Arc length to Pavement R = 85.94'	Chord length & offset from face of S. cb R = 108.94'	Chord length & offset from face of N. cb R = 62.94'	Deflection	Total Deflection
7171.13					
8100.00	28.87	36.42	21.04	9° 37' 24"	
8124.48	24.48	30.93	17.87	8° 05' 36" 17° 47' 00"	

CURVE DATA STA. 5143.7 TO STA. 7150.11
STATIONING ON THE PROPOSED PAVEMENT.

STATIONS	Arc length to Pavement	Chord length & offset from face of S. cb	Chord length & offset from face of N. cb	Deflection	Total Deflection
R = 1928'					
5143.7					
5175.0	31.30'		37.23'	1°-31'-05"	
6106.15	31.15'		37.05'	1°-29'-35" 15°-00'-00"	
R = 274.50'					
6106.15		R = 27.50'	R = 251.50'	1/2 Δ = 15°-01'-30"	
6125.0	18.85'		17.27'	1°-58'-02"	
6150.0	25.00'	26.49'	22.90'	2° 36' 33" 4' 34' 35"	
6175.0	25.00'	26.50'	22.90'	2° 36' 38" 7" 11' 09"	
7100.0	25.00'	26.49'	22.90'	2° 36' 33" 9' 47' 42"	
7125.0	25.00'	26.49'	22.90'	2° 36' 33" 12" 28' 15"	
7150.11	25.11'	27.20'	23.00'	2°-37'-15" 15° 01' 30"	

25TH. ST. SO.
USAGE TO EXCHANGE PL.

PROJ. NO C15-102