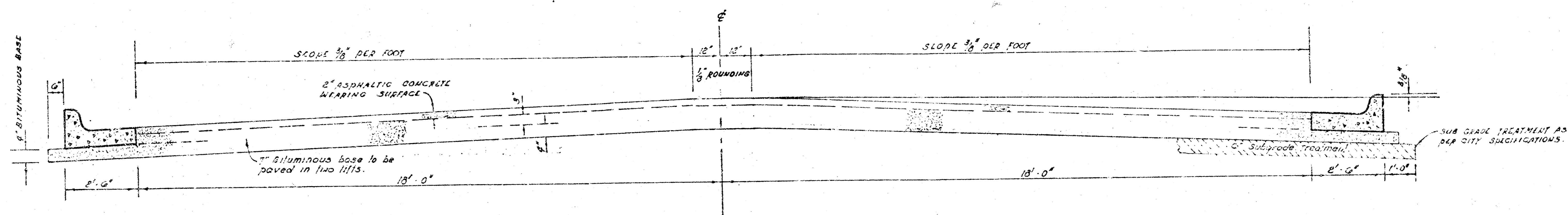


29th STREET SOUTH

E.L. WEST ST. to E.L. LOT 3, BLK. 2, KESSLER-KOCH ADDITION



TYPICAL SECTION

The A.C. pavement between the curb & gutter shall be paid as 30 yds 3" A.C. pavement (2" bituminous base). The bituminous base under the curb & gutter shall be paid as 30 yds 2" bituminous base.

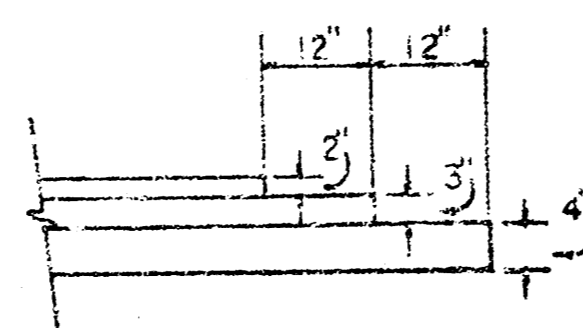
4' ASPHALTIC CONCRETE PAVEMENT WITH BITUMINOUS BASE

A TACK COAT OF EMULSIFIED ASPHALT (SS-1H) SHALL BE APPLIED AT AN APPROXIMATE RATE 0.05 GALLONS PER SQ YD BETWEEN LIFTS OF ASPHALTIC MATERIALS WHEN ORDERED BY THE ENGINEER. TACK COAT WILL NOT BE PAID FOR DIRECTLY AND SHALL BE CONSIDERED AS SUBSIDIARY TO PRICE BID FOR ASPHALTIC PAVEMENT.

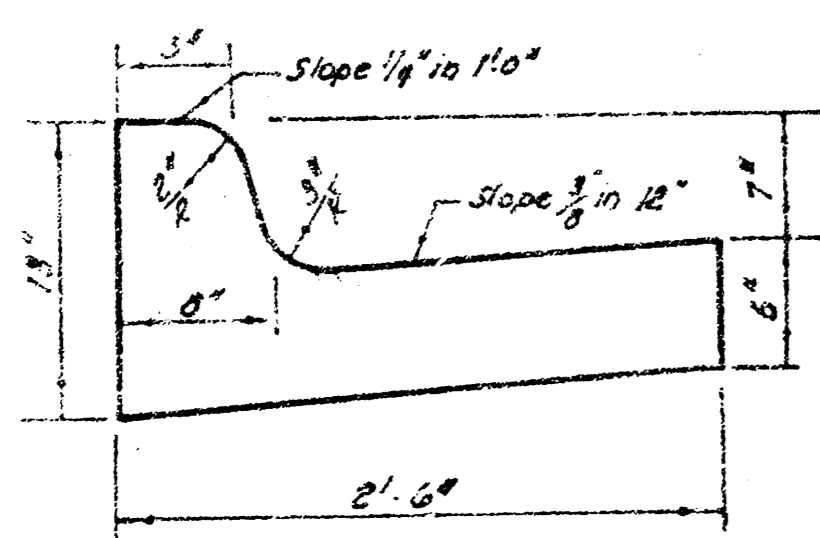
BITUMINOUS BASE AND ASPHALTIC CONCRETE WEARING SURFACE SHALL BE PLACED WITH A LAYDOWN MACHINE HAVING AUTOMATIC ELECTRONIC CONTROLS FOR CROWN AND GRADE. CONSTRUCTION JOINTS IN EACH LIFT SHALL BE STAGGERED A MINIMUM DISTANCE OF 1' WITH JOINTS IN PRECEDING LIFTS AND SUCH THAT A JOINT WILL BE CONSTRUCTED ON THE PAVEMENT CENTERLINE IN THE TOP LIFT.

DETAIL OF TRANSVERSE CONSTRUCTION JOINTS

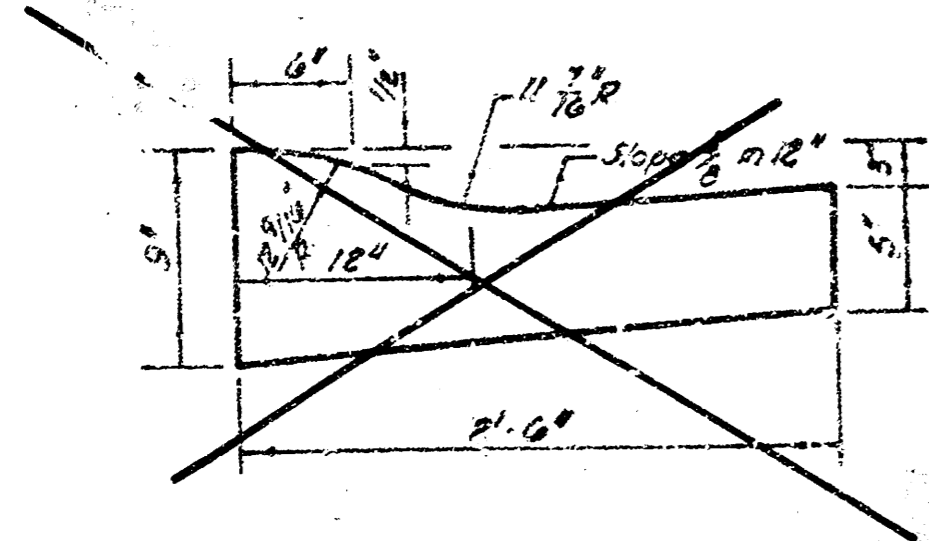
TRANSVERSE CONSTRUCTION JOINTS SHALL BE CONSTRUCTED IN FLEXIBLE BASE PAYEMENTS AT LOCATIONS WHERE PAVEMENT TEMPORARILY ENDS TO FACILITATE FUTURE PAVEMENT CONSTRUCTION AS SHOWN BY DETAIL. THE COST OF CONSTRUCTING THE TRANSVERSE CONSTRUCTION JOINTS SHALL NOT BE MEASURED OR PAID FOR DIRECTLY BUT SHALL BE INCLUDED IN THE BID PRICE FOR SQUARE YARDS OF ASPHALTIC CONCRETE PAVEMENT.



COMBINED CURB & GUTTER



ROLL TYPE CURB & GUTTER



CITY OF WICHITA, KANSAS

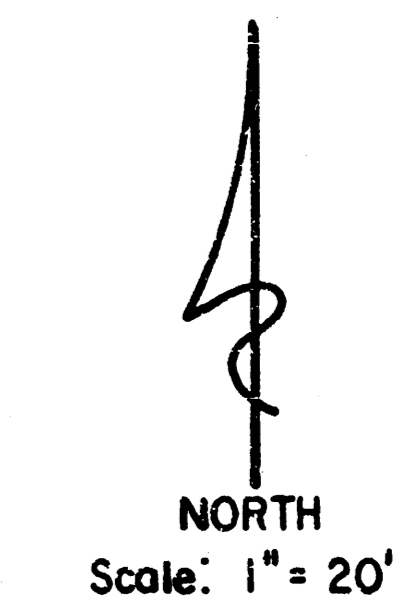
DEPARTMENT of PUBLIC WORKS - Engineering Division.

R. W. LINN CITY ENGINEER

DATE SEPT 1977 Proj No DAKS575096

B.M.= 103.77 R.R. Spike E. Side P. Pole @ W. Side West St. Approx. 75' N. of N.L. 29th St. So.
 B.M.= 103.47 City Std. 53' E. & 44' S. of C. West St. & 31st St. So.
 Baseline is North of 29th St. So.

P. I.
 ELEV. 104.20
 NO VC



Construct 65 L.F. of 30" CMPs
 Pipe to include installation, and
 Warrent ends.

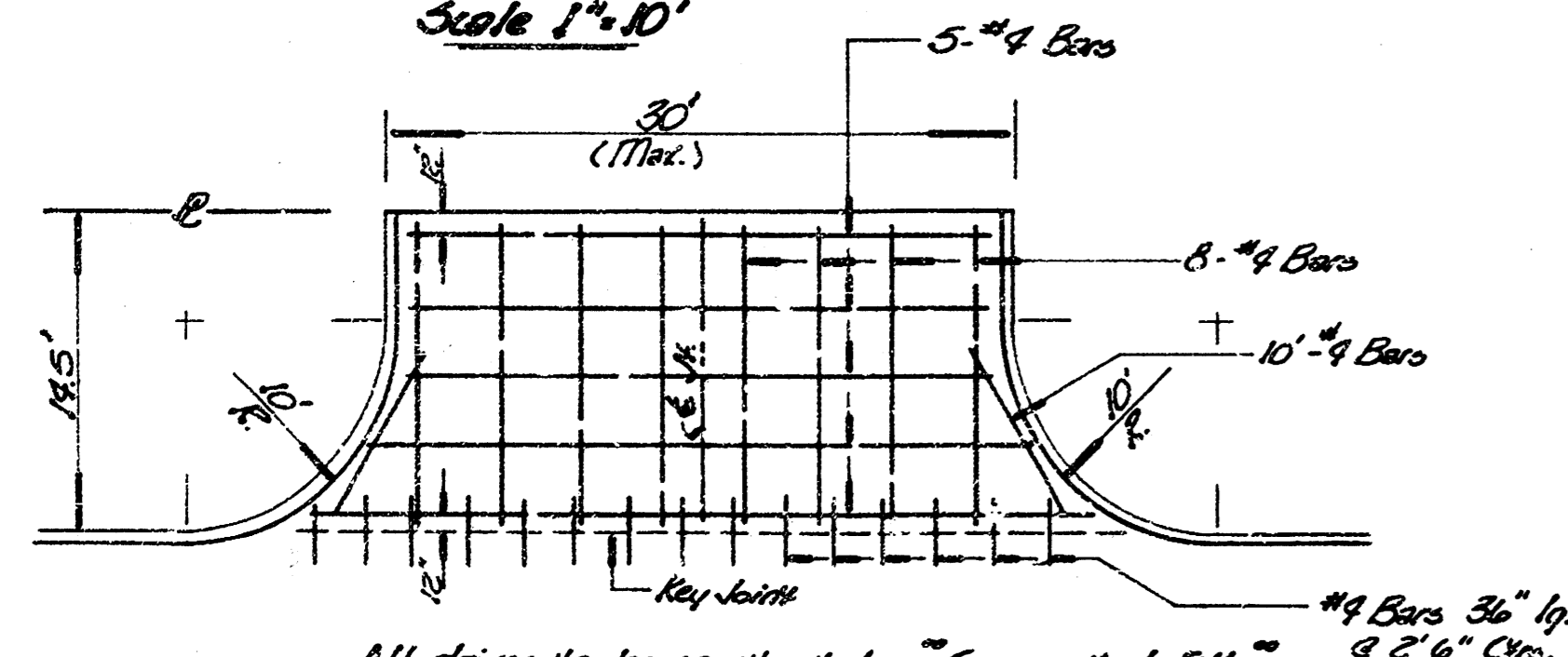
Begin Construction
 Match Existing Form.

Construct 4' Depth
 Hookup.

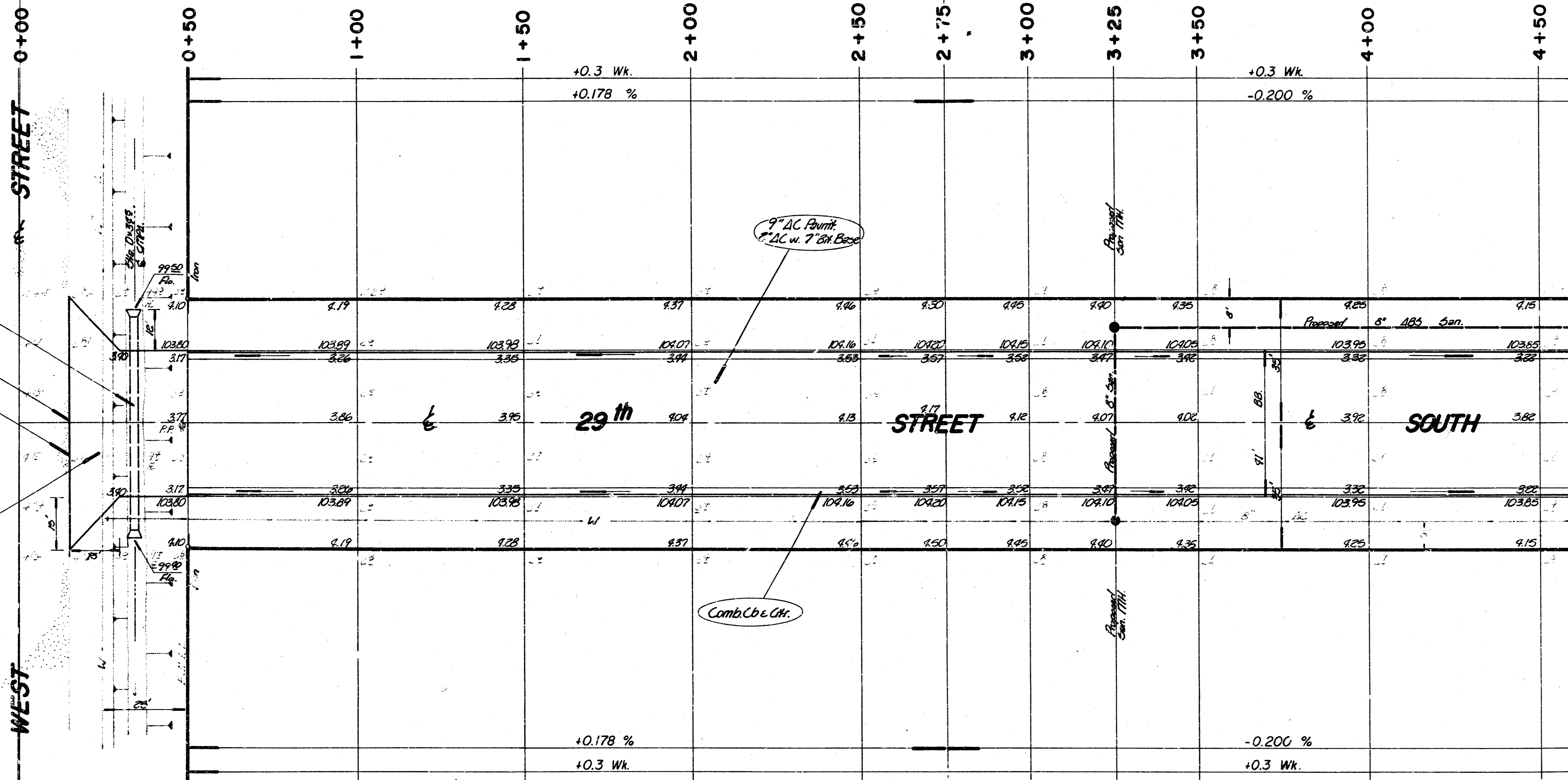
9" A.C. Pavt.
 7" Cb. & Gtr.

Comb. Cb. & Gtr.

Reinforcing Steel Plan
 Int. Dr. - 10' R.
 Scale 1" = 10'



All drives to be constructed w/ Compacted Fill.



Note: Borrow material to come from channel at the East end of
 Kessler-Koch Addition, and to be paid for as "Excavation".

Earthwork			Quantities		
Property	City	Excavation	Property	City	Excavation
Exc. = 169.1 cy	Comp. Fill = 200 cy	Borrow = 22065 cy	Exc. = 120 cy	Comp. Fill = 773 cy	Borrow = 819 cy
*10% = 16.9 cy	*10% = 20 cy	*20% = 4413 cy	*10% = 12 cy	*10% = 77 cy	*20% = 170 cy
Total = 186.0 cy	Total = 220 cy	Total = 26478 cy	Total = 132 cy	Total = 850 cy	Total = 1019 cy
Manipulation = 6111.9 SY			Total Excavation = Excavation * Borrow = 2833.8 cy. (Prop) & 1151 cy. (City)		

Pavement construction to be coordinated w. construction
 of proposed San Sewer lines.
 Note: Take ties and replace any "ties" moved or destroyed
 during construction.
 Construction to be coordinated w. Gas Co. for possible
 location of proposed gas lines.

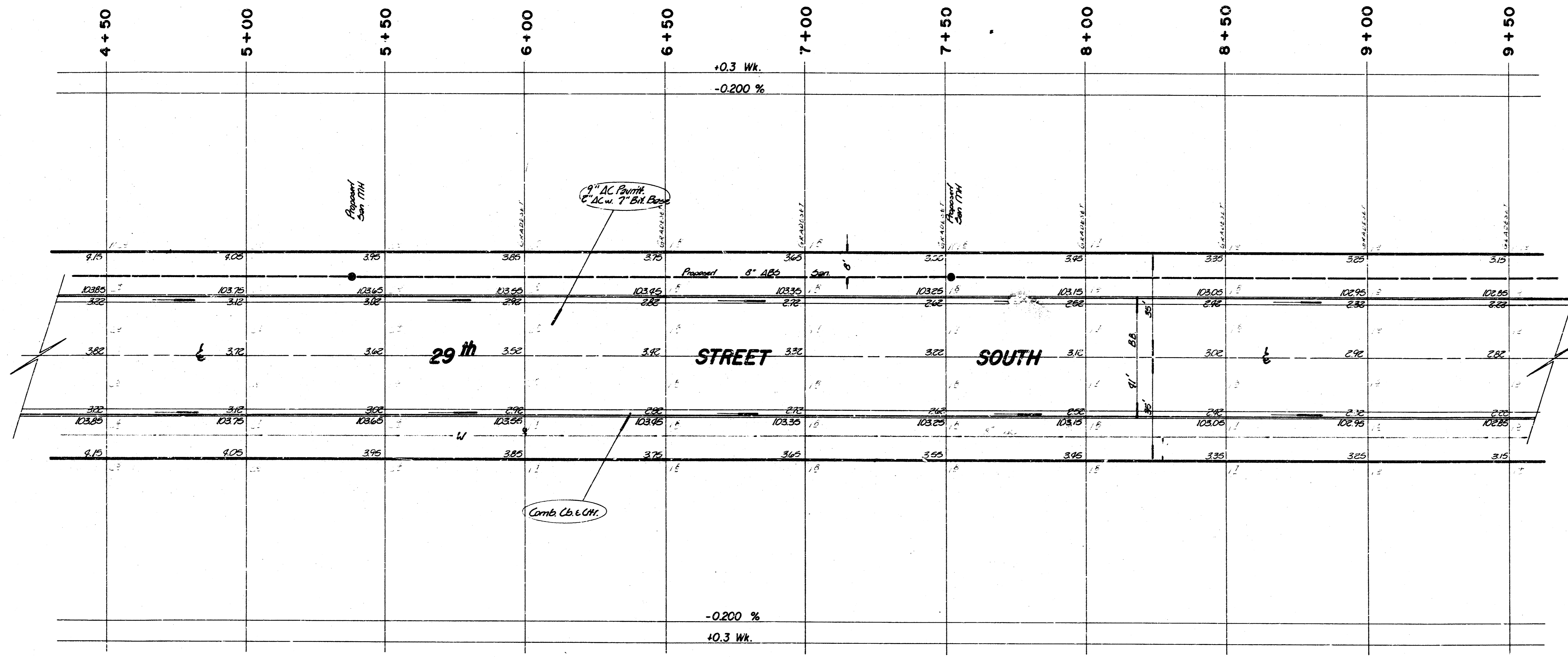
SUBGRADE
 TYPE OF SUBGRADE TREATMENT SHALL BE DETERMINED BY THE FIELD ENGINEER. SUBGRADE TREATMENT SHALL BE DETERMINED BY THE ENGINEER. CEILING SHALL BE DETERMINED BY THE ENGINEER. TYPE OF ANY CURB SHALL BE DETERMINED BY THE ENGINEER.

Note: Contractor to contact Southwestern Bell Tele. Co. for location of possible underground lines.

29th STREET SOUTH
 E.L. West St. to the E.L. lot 3, Blk. 2,
 Kessler-Koch Addition
 (4' B-B A.C. Pavt. w/ Comb. Cb. & Gtr.)
CITY OF WICHITA, KANSAS
 R. W. Linn — City Engineer
 Proj. No. DAKS575098
 Date Sept. 14

Survey Done By: J.P. G...
 Plan City & M...
 Exec. Checker:

FILMED FROM THE BEST AVAILABLE COPY.....

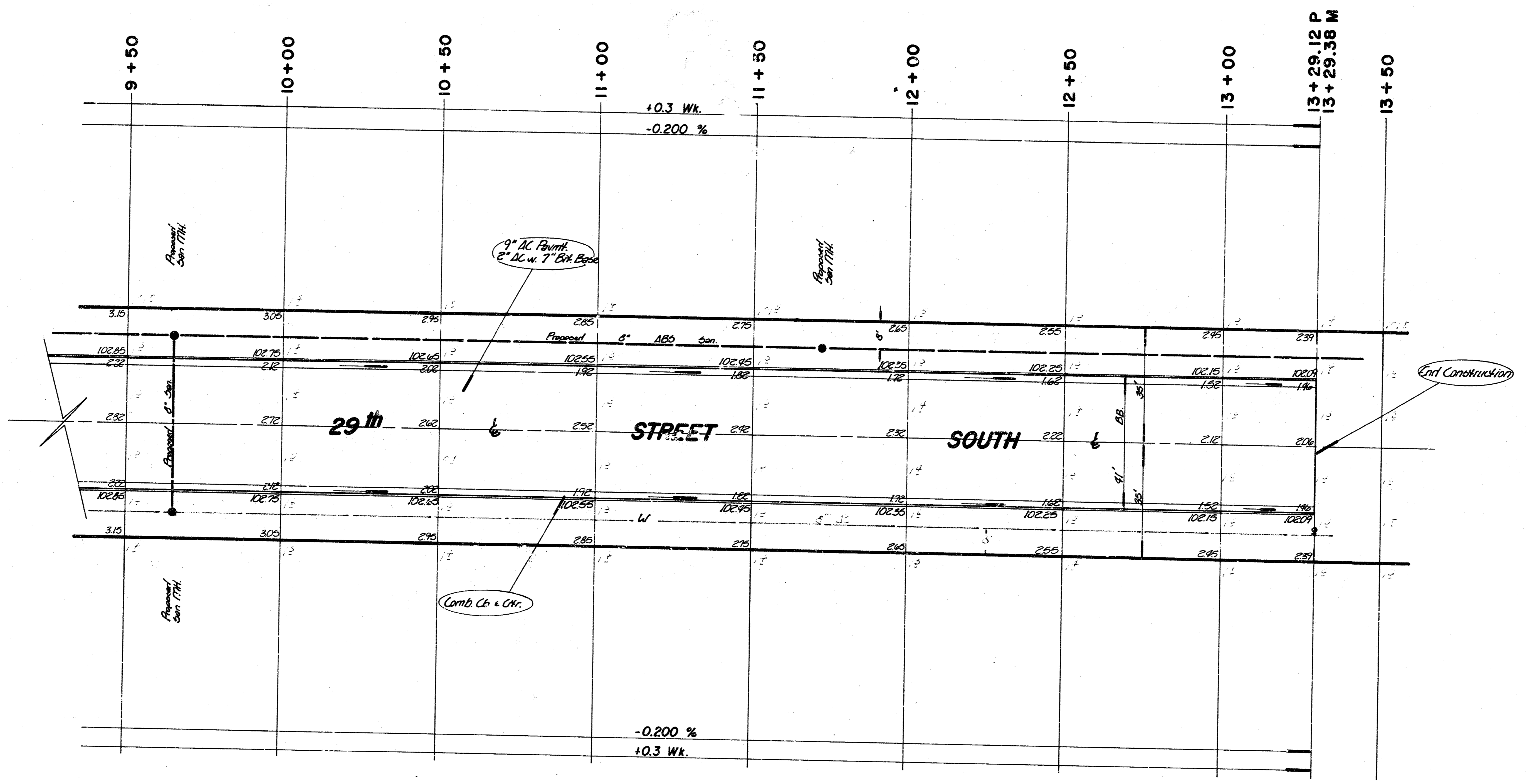


NORTH
Scale: 1"=20'

29th St. So.
DAKS 575098

3/5

FILMED FROM THE BEST AVAILABLE COPY



NORTH
 Scale: 1" = 20'

29th St. So.
 DAKS 575098
 (4/5)

FILMED FROM THE BEST

