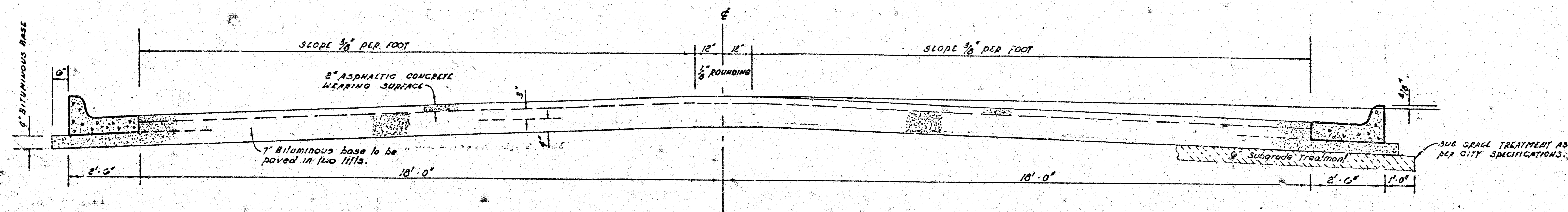


**30<sup>th</sup> STREET SOUTH**

E.L. West St. to the E.L. lot 6, Blk. I, Kessler-Koch Addn.

Proj. No. DAKS575097



**TYPICAL SECTION**

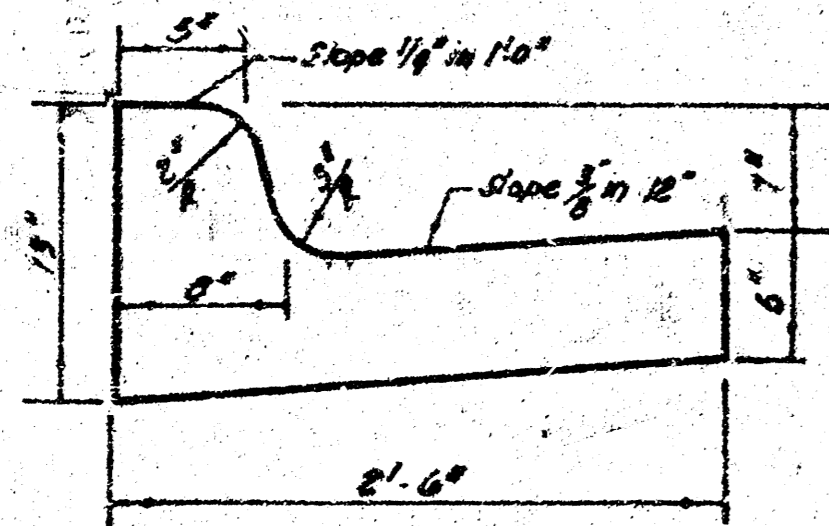
**4' ASPHALTIC CONCRETE PAVEMENT WITH BITUMINOUS BASE**

A TACK COAT OF EMULSIFIED ASPHALT (SS-1H) SHALL BE APPLIED AT AN APPROXIMATE RATE 0.05 GALLONS PER SQ YD BETWEEN LIFTS OF ASPHALTIC MATERIALS WHEN ORDERED BY THE ENGINEER. TACK COAT WILL NOT BE PAID FOR DIRECTLY AND SHALL BE CONSIDERED AS SUBSIDIARY TO PRICE BID FOR ASPHALTIC PAVEMENT.

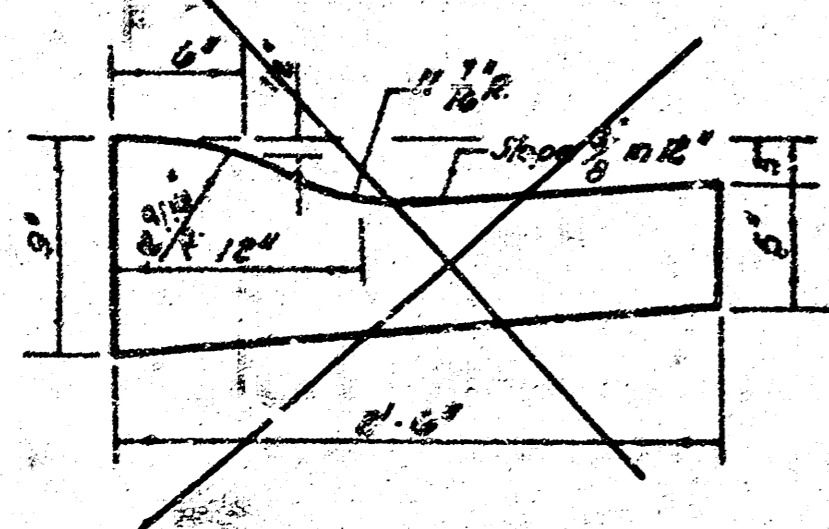
BITUMINOUS BASE AND ASPHALTIC CONCRETE WEARING SURFACE SHALL BE PLACED WITH A LAYDOWN MACHINE HAVING AUTOMATIC ELECTRONIC CONTRCLS FOR CROWN AND GRADE. CONSTRUCTION JOINTS IN EACH LIFT SHALL BE STAGGERED A MINIMUM DISTANCE OF 1' WITH JOINTS IN PRECEDING LIFTS AND SUCH THAT A JOINT WILL BE CONSTRUCTED ON THE PAVEMENT CENTERLINE IN THE TOP LIFT.

*The A.C. pavement between the curb & gutter shall be paid as 39 yds 9" A.C. pavement (7" Bituminous Base). The Bituminous Base under the curb & gutter shall be paid as 39 yds 9" Bituminous Base.*

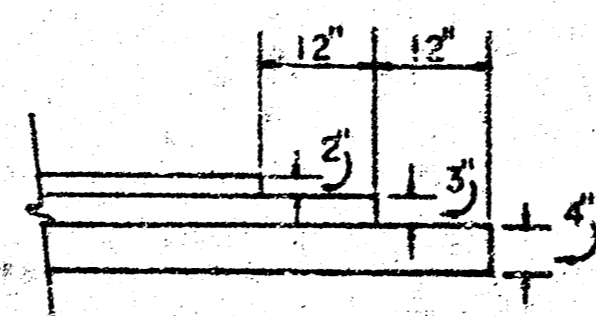
**COMBINED CURB & GUTTER**



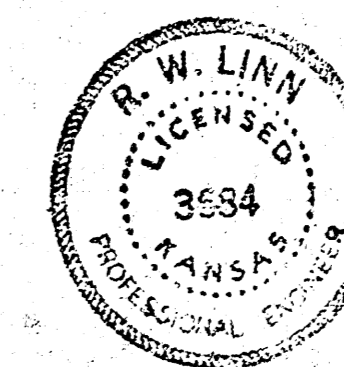
**ROLL TYPE CURB & GUTTER**



**DETAIL OF TRANSVERSE CONSTRUCTION JOINTS**



TRANSVERSE CONSTRUCTION JOINTS SHALL BE CONSTRUCTED IN FLEXIBLE BASE PAVEMENTS AT LOCATIONS WHERE PAVEMENT TEMPORARILY ENDS TO FACILITATE FUTURE PAVEMENT CONSTRUCTION AS SHOWN BY DETAIL. THE COST OF CONSTRUCTING THE TRANSVERSE CONSTRUCTION JOINTS SHALL NOT BE MEASURED OR PAID FOR DIRECTLY BUT SHALL BE INCLUDED IN THE BID PRICE FOR SQUARE YARDS OF ASPHALTIC CONCRETE PAVEMENT.

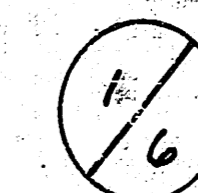


**CITY OF WICHITA, KANSAS**

DEPARTMENT of PUBLIC WORKS - Engineering Division.

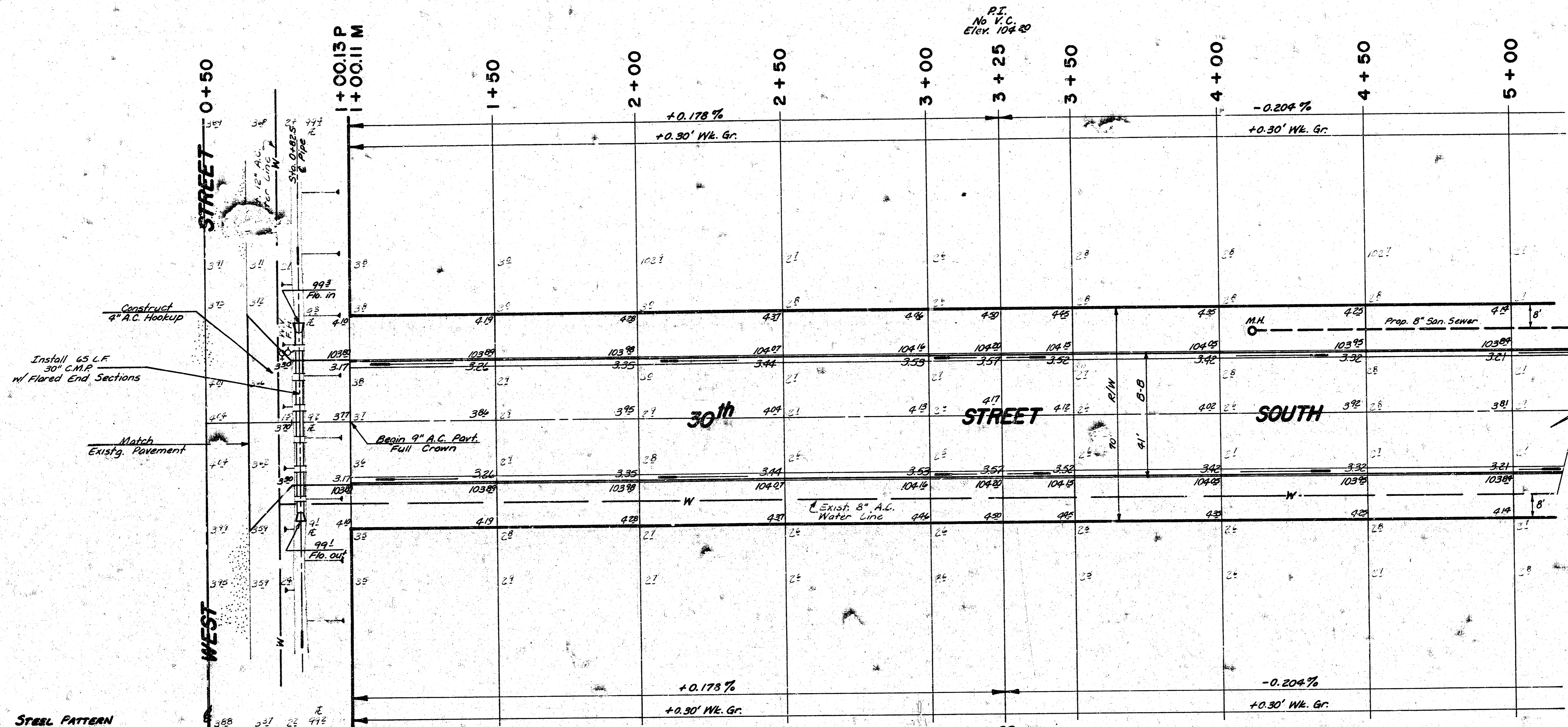
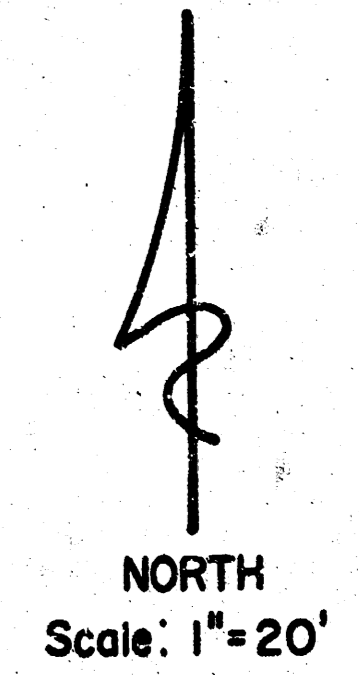
R. W. LINN CITY ENGINEER

DATE SEPT. 1976 Proj. No. DAKS575097

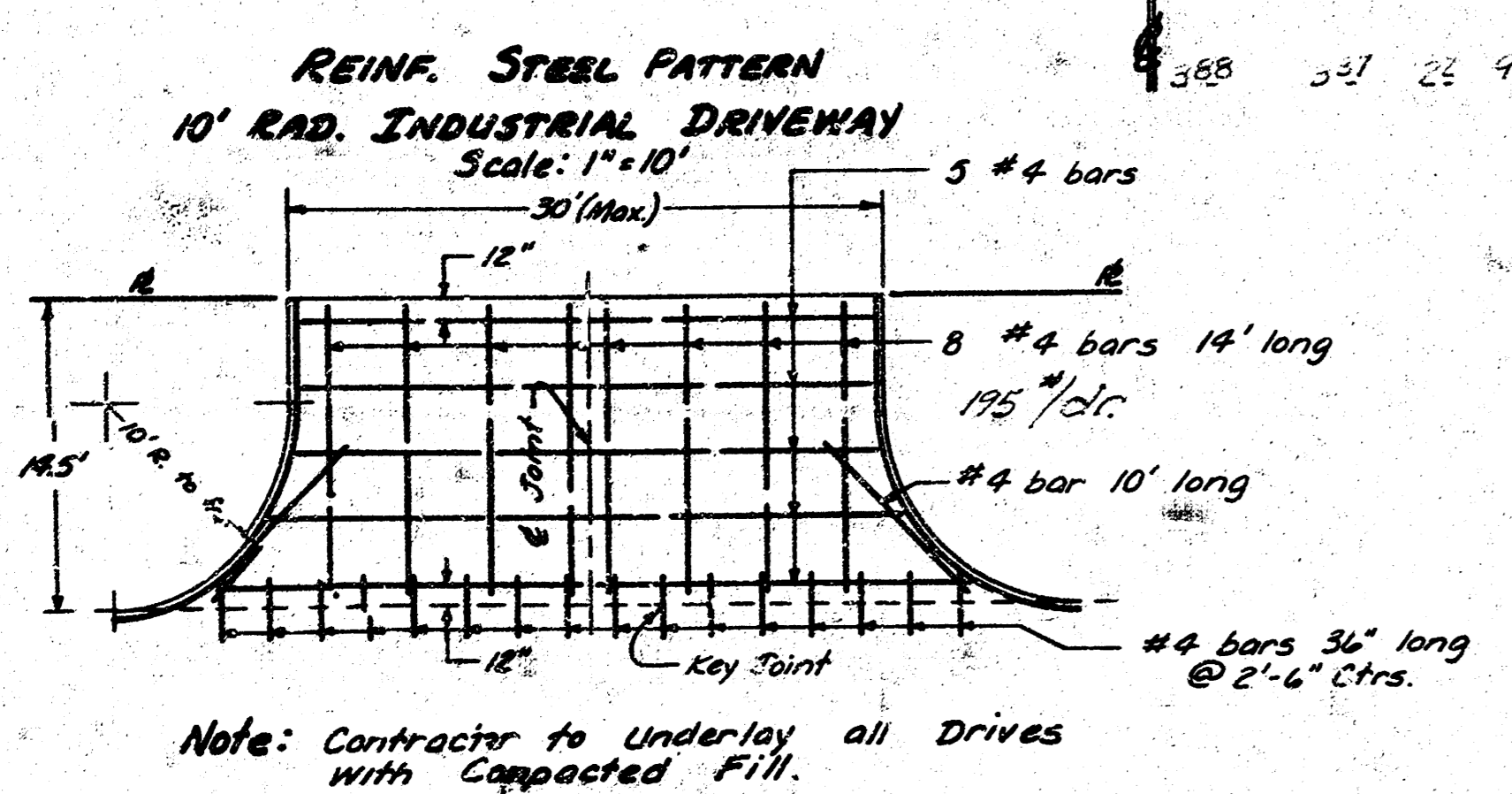


1/6

B.M. 104.62 60 Spk. E. Face 4th H.L.P. North of 31st St. So. on W. Side West St., 655' N. of 31st St. So.  
 B is C 30th St. So.



Survey by  
 Plan C.D.M.  
 Exp. C.D.M.  
 Checked



Manipulation = 4305 S.Y.

EARTHWORK:		
	PROPERTY	CITY
Excavation +10%	107.7 C.Y.	12.1 C.Y.
	10.8 C.Y.	1.2 C.Y.
<b>Total</b>	<b>118.5 C.Y.</b>	<b>13.3 C.Y.</b>
Comp. Fill +10%	410.2 C.Y.	111.3 C.Y.
	41.0 C.Y.	11.1 C.Y.
<b>Total</b>	<b>451.2 C.Y.</b>	<b>122.4 C.Y.</b>
Borrow Mat'l +20%	244.0 C.Y.	123.9 C.Y.
	442.8 C.Y.	24.8 C.Y.
<b>Total</b>	<b>2456.8 C.Y.</b>	<b>148.7 C.Y.</b>

**NOTE:** All Borrow Mat'l is to be Taken from the Channel at the East End of Kessler-Koch Aduin, and is to be Paid for as "Cu. Vol. of Excavation."

Note: Take Ties and Replace any Irons Lost or Destroyed during Construction.

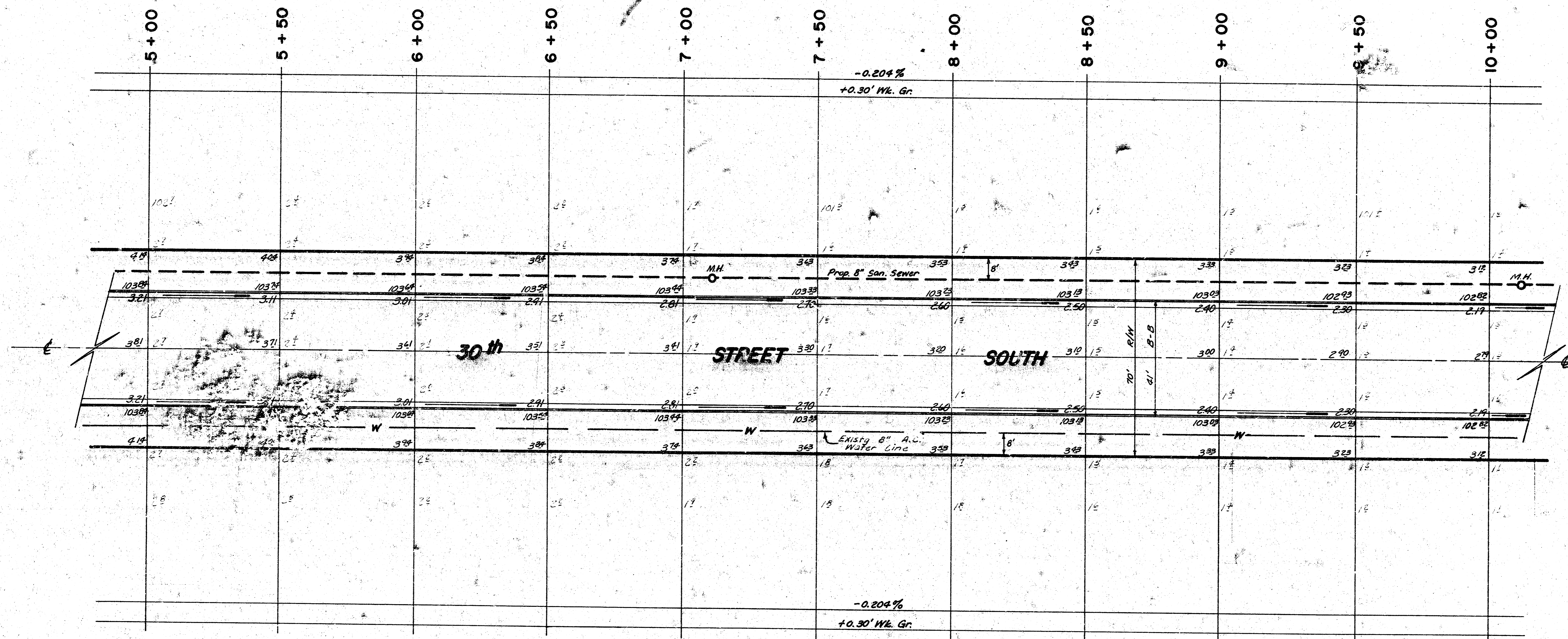
NOTE TO FIELD ENGINEER & CONTRACTOR  
 Grade parking and clear right-of-way for proposed sidewalk. Compact fill in sidewalk area. TO BE CONSTRUCTED BY "OTHERS".

Note: Contractor to Contact Art-La Gas Co., Gas Service Co. & Southwestern Bell Regarding locations of Underground Utilities.

Note: Paving & Sewer Contractors to Co-ordinate Work on this Project.

**30th STREET SOUTH**  
 E.L. West St. to the E.L. lot 6, Blk. 1,  
 Kessler-Koch Addition  
 (4' B-B A.C. Pavt. / Comb. Cb. & Gr.)  
**CITY OF WICHITA, KANSAS**  
 R.W. Linn — City Engineer  
 Proj. No. DAKS575097 2/4  
 Date Sept. 7/1

2/6



NORTH  
 Scale: 1"=20'

3/4

30th St. So.  
 DAKS575097. 3/4

B.M. = 100.02 R.R. Spk. N. Side PP @ N. Side 31st St. So., Approx. 105' W. of W.L. All Hallows

