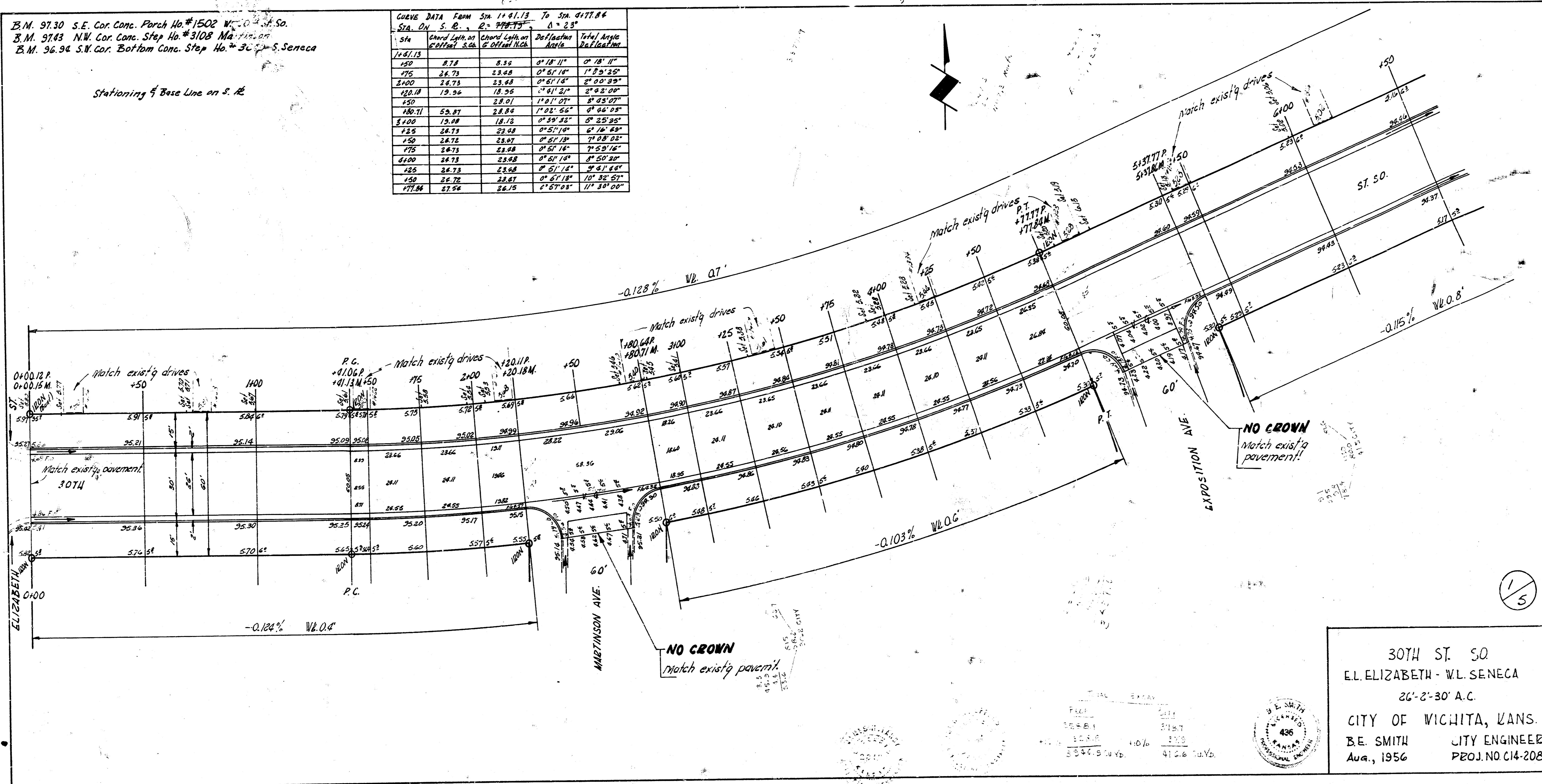


B.M. 97.30 S.E. Cor. Conc. Patch No. 1502 W. 20' S. So.  
 B.M. 97.43 N.W. Cor. Conc. Step No. 3108 N. 1/2 Section  
 B.M. 96.96 S.W. Cor. Bottom Conc. Step No. 3074 S. Seneca

Stationing of Base Line on S. E.

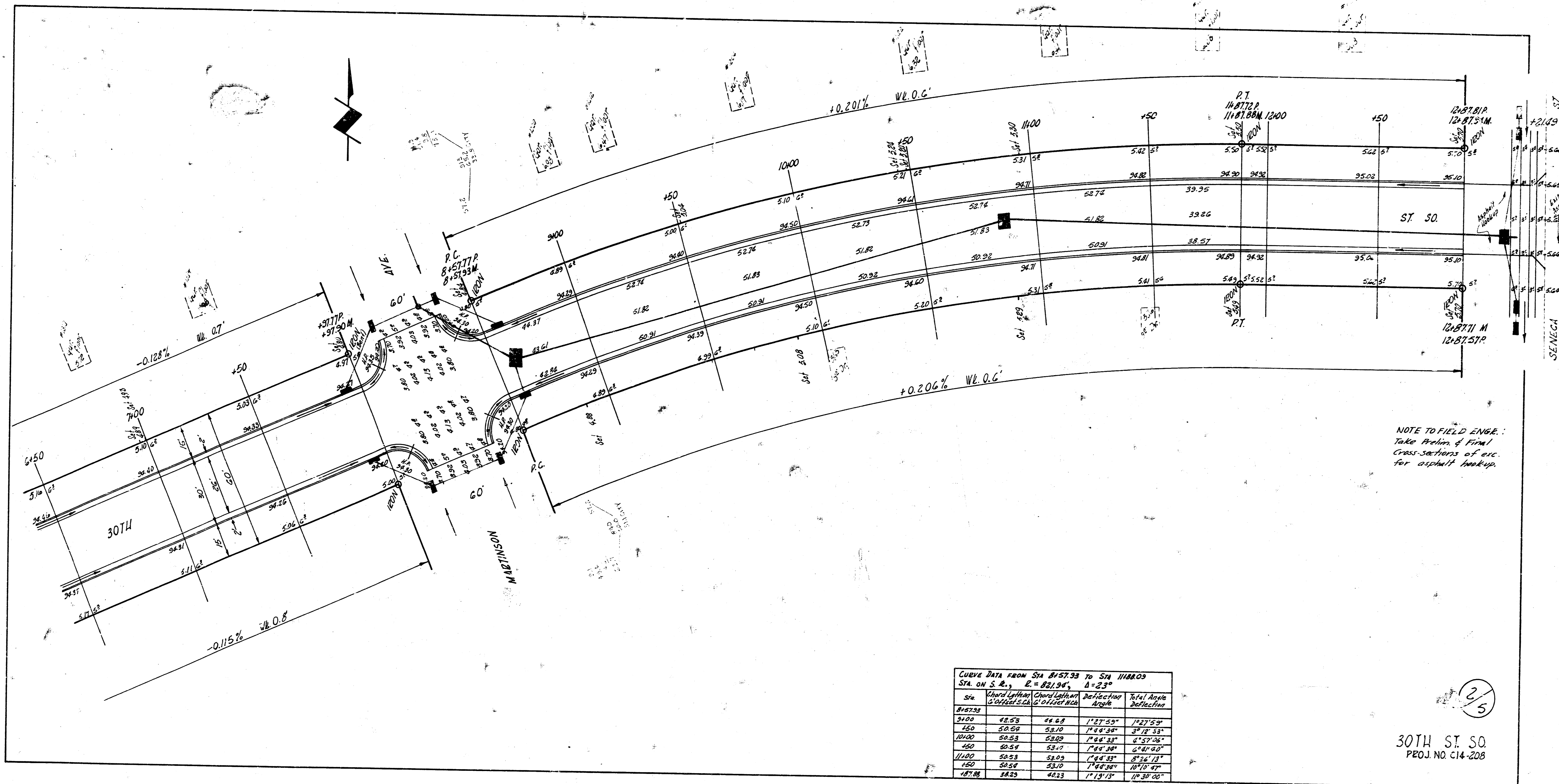
Sta.	Chord Length	Chord Bearing	Deflection Angle	Total Angle
Sta.	Chord Length	Chord Bearing	Deflection Angle	Total Angle
148.13				
150	8.78	8.30	0° 18' 11"	0° 18' 11"
175	24.73	23.48	0° 51' 14"	1° 09' 25"
200	24.73	23.48	0° 51' 14"	2° 00' 39"
220.18	19.36	18.26	0° 41' 21"	2° 42' 00"
250	28.01	27.01	1° 01' 07"	3° 43' 07"
280.71	52.87	28.84	1° 02' 56"	4° 46' 03"
300	19.48	18.13	0° 59' 22"	5° 25' 25"
325	26.73	23.68	0° 51' 14"	6° 16' 39"
350	26.73	23.67	0° 51' 14"	7° 08' 03"
375	26.73	23.68	0° 51' 14"	7° 59' 16"
400	26.73	23.68	0° 51' 14"	8° 50' 30"
425	26.73	23.68	0° 51' 14"	9° 41' 44"
450	26.73	23.67	0° 51' 14"	10° 32' 57"
475.86	27.94	26.75	1° 57' 05"	11° 30' 00"



30TH ST. SO.  
 E.L. ELIZABETH - W.L. SENECA  
 26'-2'-30' A.C.  
 CITY OF WICHITA, KANS.  
 B.E. SMITH CITY ENGINEER  
 Aug., 1956 PROJ. NO. C14-208



DATE: 8/1/56  
 TIME: 10:48 AM  
 10:50 AM  
 10:54 AM  
 10:57 AM  
 11:00 AM



NOTE TO FIELD ENGR.:  
 Take Prelim. & Final  
 Cross-sections of etc.  
 for asphalt backup.

Curve Data from Sta 8+57.33 to Sta 11+80.03  
 Sta on S.C. = 881.94, I = 23°

Sta	Chord Length	Chord Length	Deflection Angle	Total Angle
Station	S.C.	C.O.	Angle	Station
8+57.33				
9+00	42.55	44.48	1°27'53"	1°27'53"
9+50	85.10	88.96	1°47'30"	3°15'23"
10+00	127.65	133.44	1°46'33"	4°51'56"
10+50	170.20	177.92	1°44'38"	6°26'34"
11+00	212.75	222.40	1°44'51"	8°11'25"
11+50	255.30	266.88	1°44'30"	9°55'55"
11+80.03	182.5	185.1	1°12'12"	11°08'07"

2/5

30TH ST. SO  
 PROJ. NO. C14-208