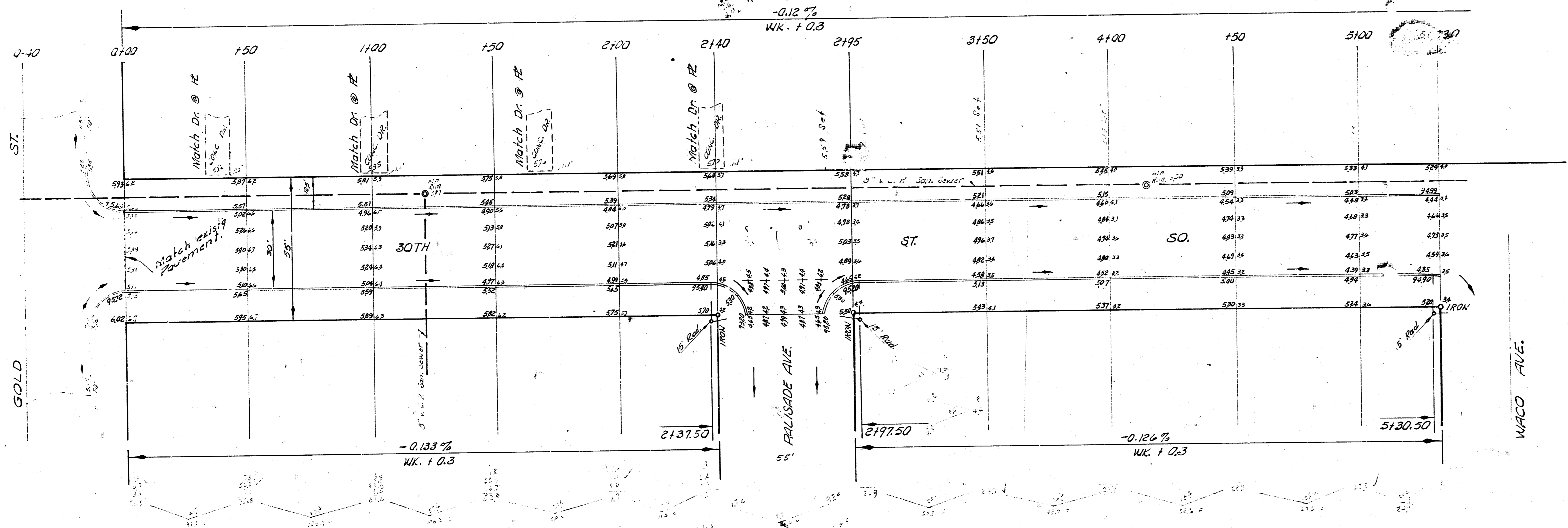


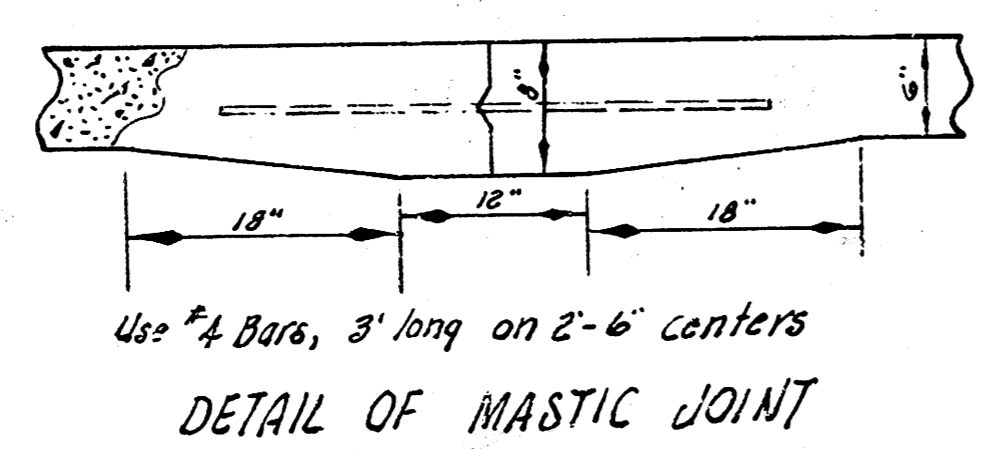
B.M. 94.84 "R" in Ritchie Top ab ES. Gold & SL 3187. ST.
 B.M. 98.09 SE cor. conc. P.O. Ho # 3035 S. Gold.
 Stationing & Base line on S. E. Chain E.

SCALE 1" = 20'

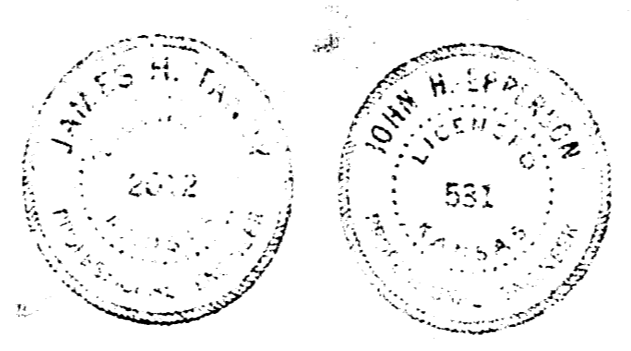


EARTH WORK

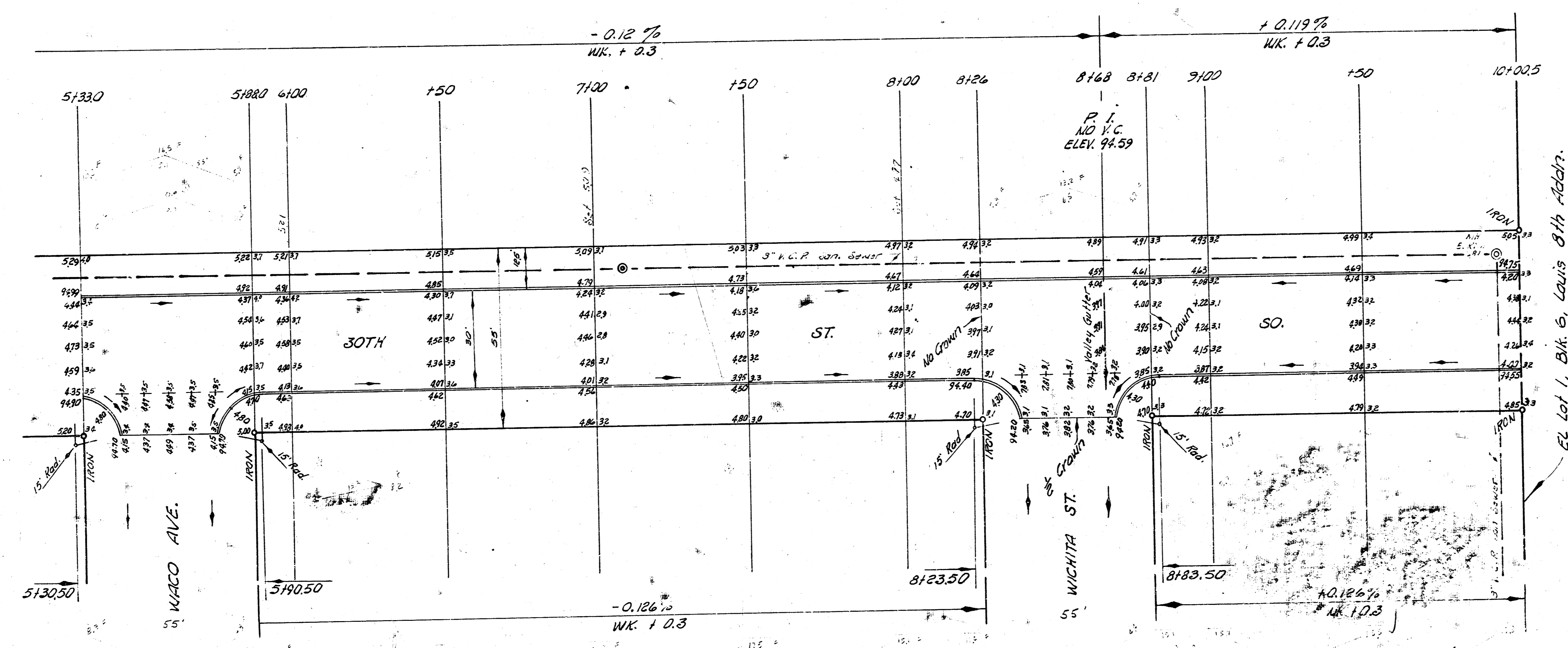
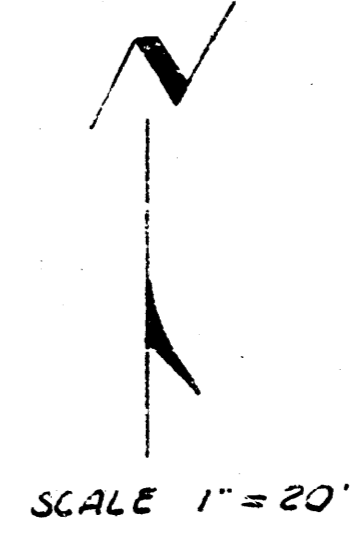
| Excavation | | Fill Compaction | | |
|------------|-------|-----------------|-------|----------|
| City | Prop. | City | Prop. | cu. Yds. |
| 4.0 | 403.0 | 5.4 | 511.3 | |
| .8 | 40.3 | 5.1 | 51.1 | |
| 4.4 | 443.3 | 59.8 | 562.4 | |



NOTE:
 Use mastic joint from
 Sta. 0+00 to Sta. 13+00.5



30TH. ST. SO.
 EL GOLD TO EL 1ST I, BLK. 6, LOUIS 8TH ADDN.
 30' CONC. & C.B.
 CITY OF WICHITA, KANSAS
 B. E. SMITH CITY ENGINEER
 NOV. 1958, PROJ. NO. C13-11



30TH ST. SO.
GOLD TO EL LOT 1, BLK. G

2/2

PROJ. NO C18-11