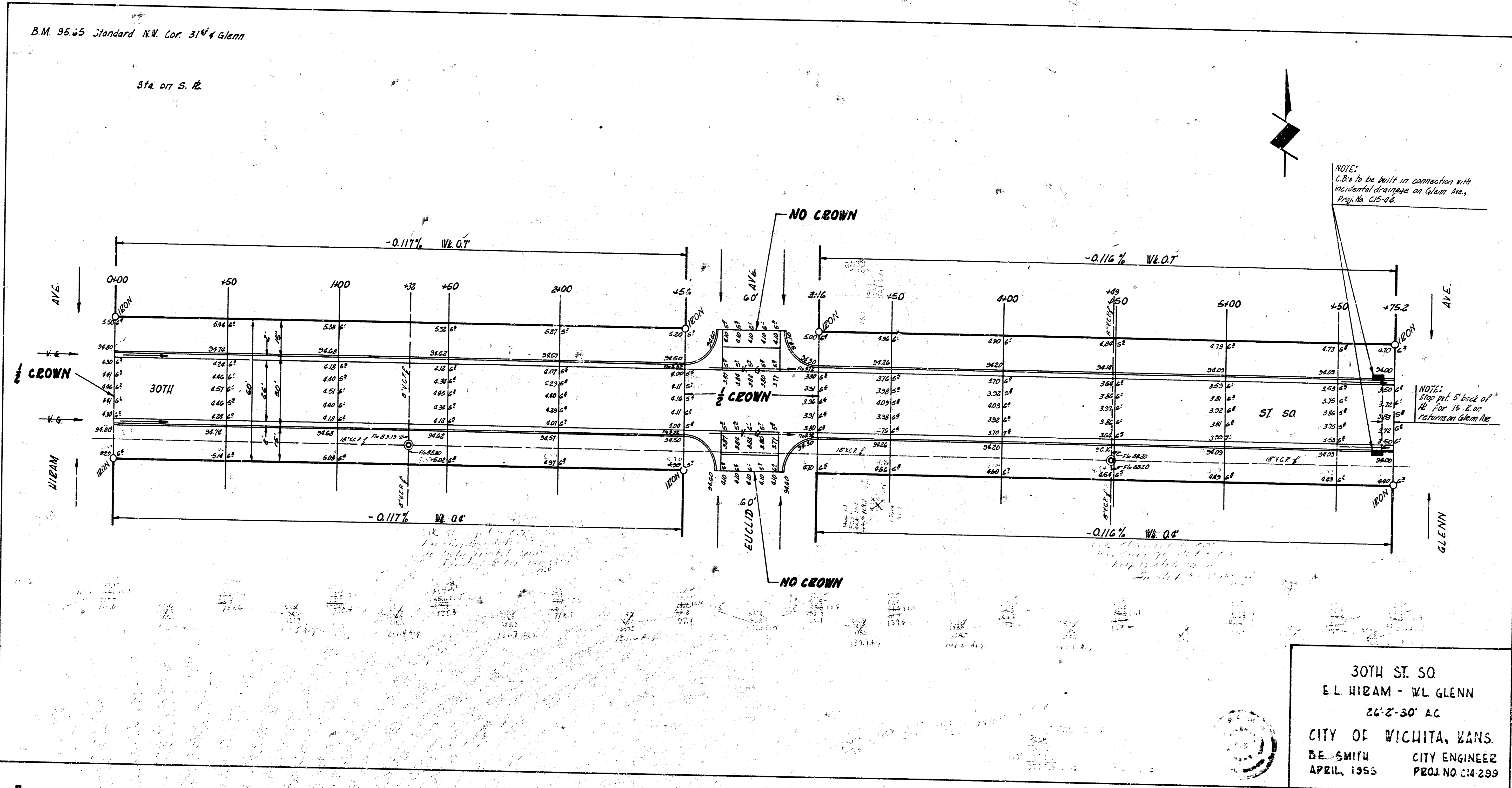


B.M. 95.65 Standard N.W. Cor. 31st & Glenn

Sta. on S. R.



30TH ST. SO
 E.L. WIRAM - W.L. GLENN
 22'-2"-30' AC
 CITY OF WICHITA, KANS.
 DE. SMITH CITY ENGINEER
 APRIL, 1955 PROJ. NO. C14-299