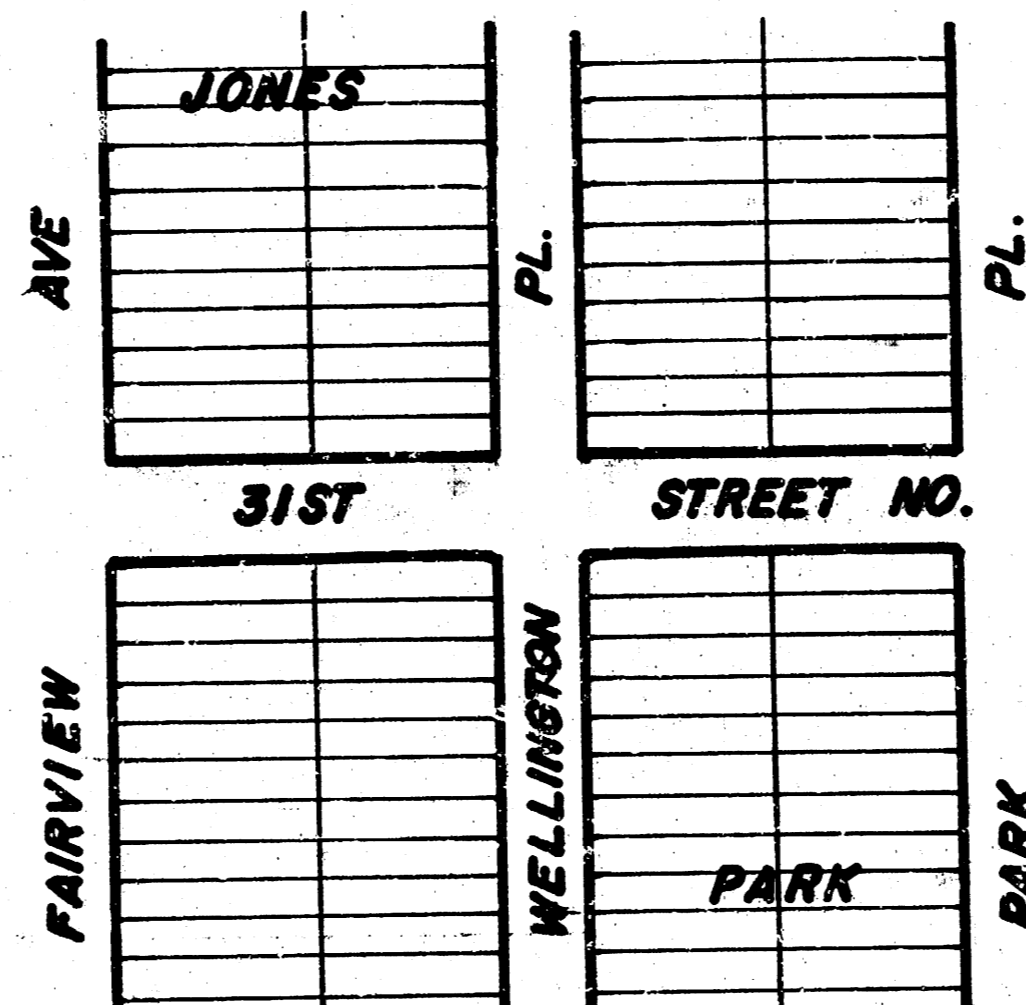
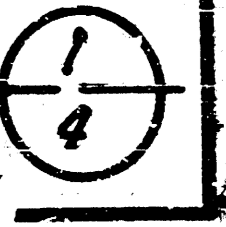
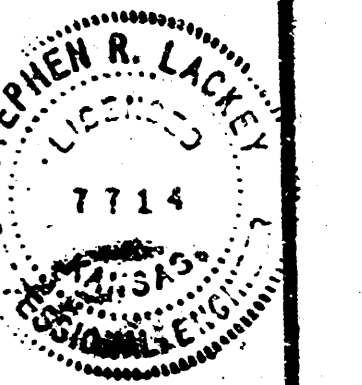


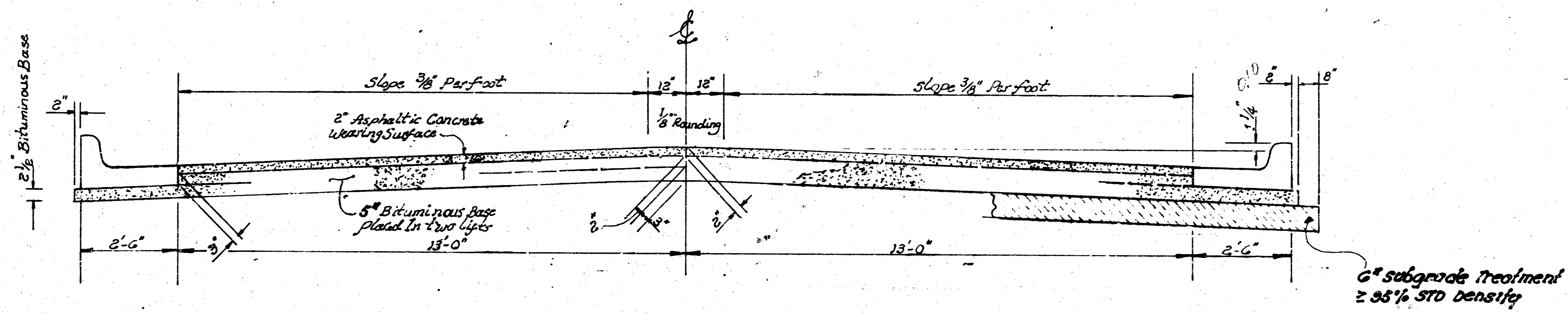
31ST STREET NORTH
E.L. FAIRVIEW AVE TO E.L. PARK PLACE



CITY OF WICHITA, KANSAS
R.W. BRUGSEMAN DIRECTOR OF ENGINEERING/CITY ENGINEER
PROJECT NO. 472-76-245-81109000-000-001



FILMED FROM THE BEST
AVAILABLE COPY.....



TYPICAL SECTION

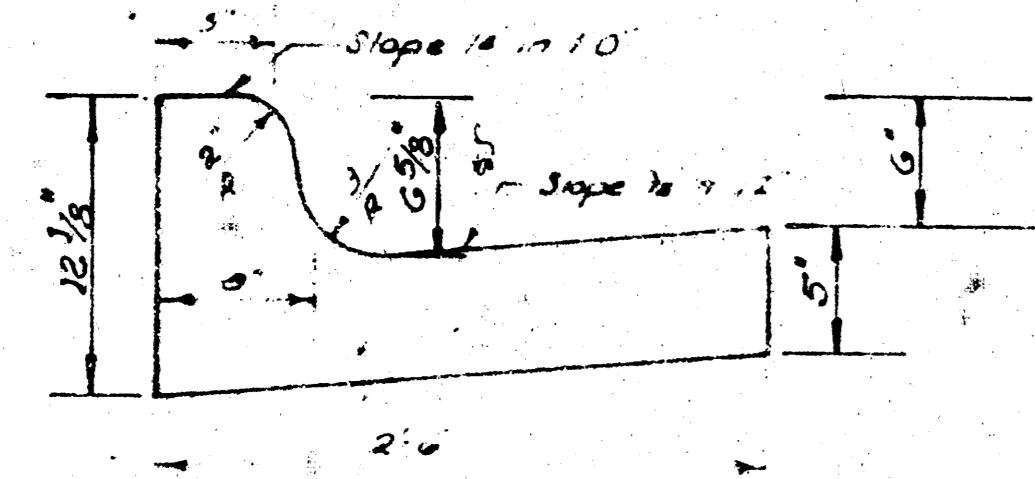
31' ASPHALTIC CONCRETE PAVEMENT WITH BITUMINOUS BASE

A TACK COAT OF EMULSIFIED ASPHALT (SS-1H) SHALL BE APPLIED AT AN APPROXIMATE RATE OF 0.05 GALLONS PER SQ YD BETWEEN LIFTS OF ASPHALTIC MATERIALS WHEN ORDERED BY THE ENGINEER. TACK COAT WILL NOT BE PAID FOR DIRECTLY AND SHALL BE CONSIDERED AS SUBSIDIARY TO PRICE BID FOR ASPHALTIC PAVEMENT.

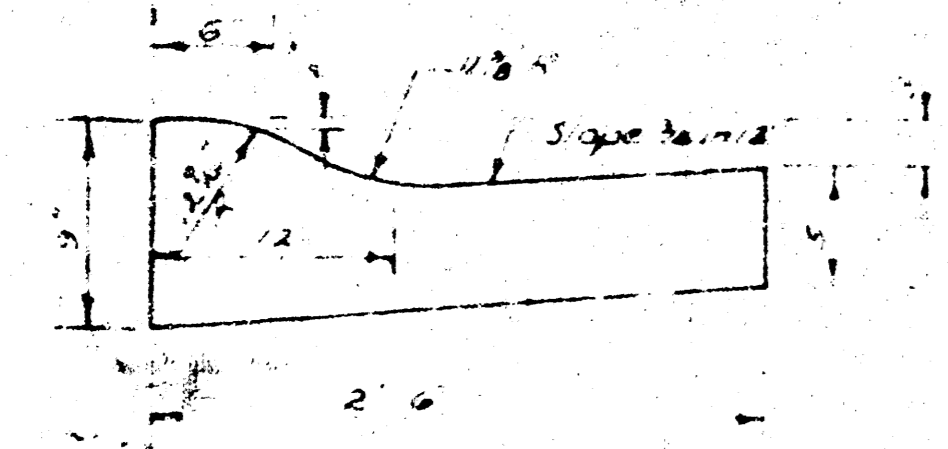
BITUMINOUS BASE AND ASPHALTIC CONCRETE WEARING SURFACE SHALL BE PLACED WITH A LAYDOWN MACHINE HAVING AUTOMATIC CONTROLS FOR CROWN AND GRADE. CONSTRUCTION JOINTS IN EACH LIFT SHALL BE STAGGERED A MINIMUM DISTANCE OF 1' WITH JOINTS IN PRECEDING LIFTS AND SUCH THAT A JOINT WILL BE CONSTRUCTED ON THE PAVEMENT CENTERLINE IN THE TOP LIFT.

The A.C. pavement between the Comb. Curb & Gutter shall be paid as Se. Yes. 7" A.C. Pavement (5" Bituminous Base). The Bituminous Base under the Comb. Curb & Gutter shall be paid as Se. Yes. 2 1/2" Bituminous Base.

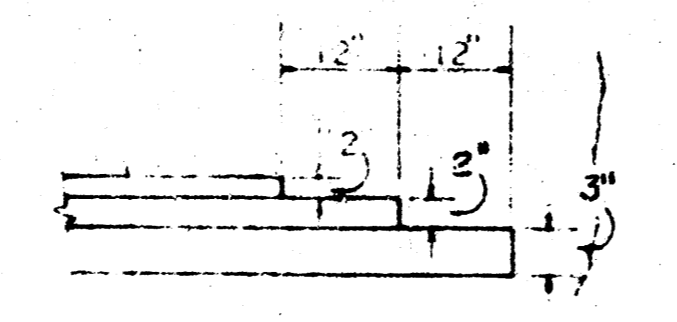
COMBINED CURB & GUTTER



ROLL TYPE CURB & GUTTER

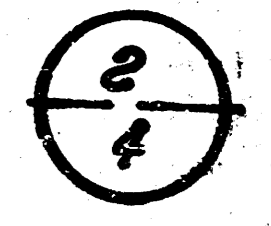


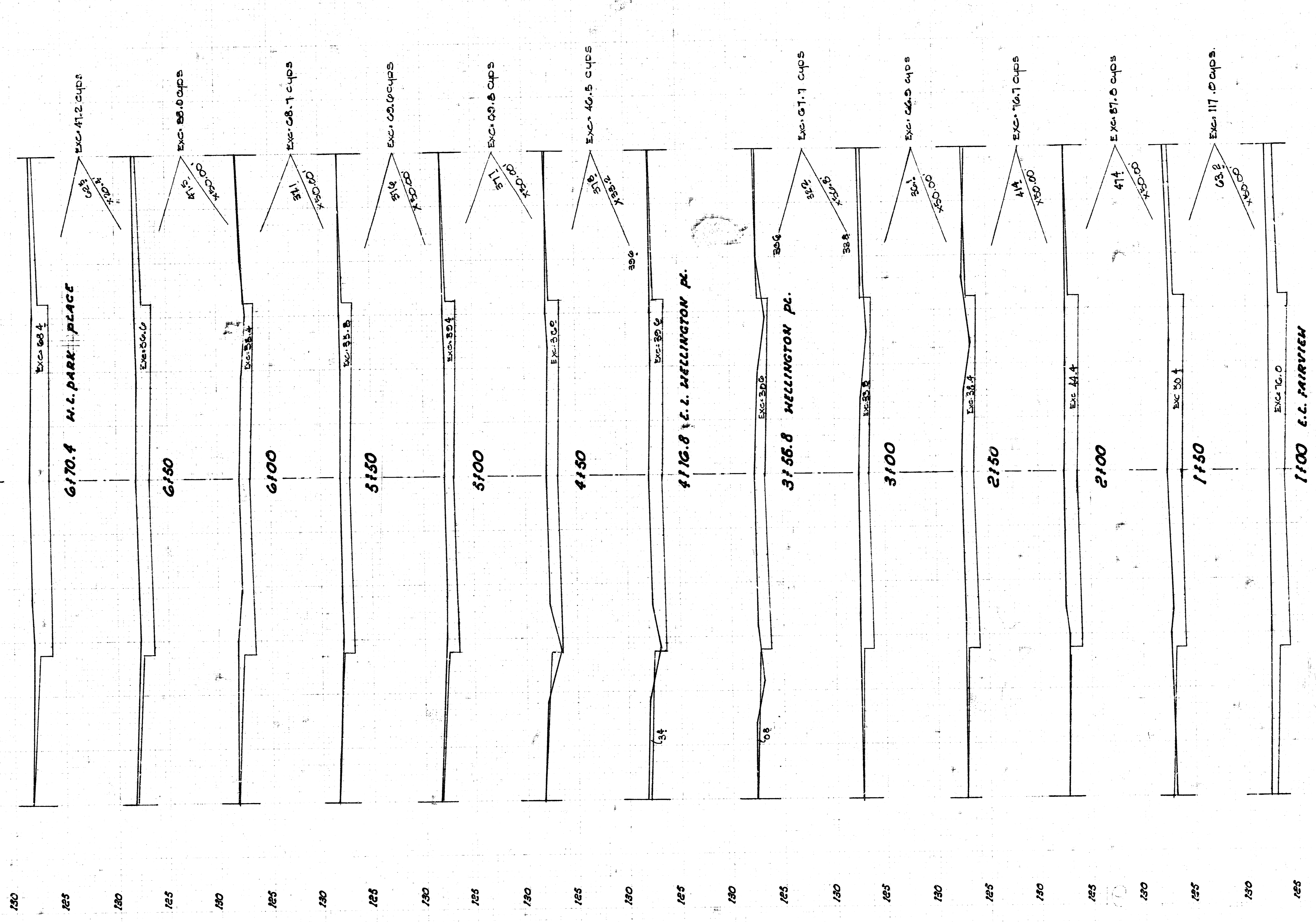
DETAIL OF TRANSVERSE CONSTRUCTION JOINTS



TRANSVERSE CONSTRUCTION JOINTS SHALL BE CONSTRUCTED IN FLEXIBLE BASE PAVEMENTS AT LOCATIONS WHERE PAVEMENT TEMPORARILY ENDS TO FACILITATE FUTURE PAVEMENT CONSTRUCTION AS SHOWN BY DETAIL. THE COST OF CONSTRUCTING THE TRANSVERSE CONSTRUCTION JOINTS SHALL NOT BE MEASURED OR PAID FOR DIRECTLY BUT SHALL BE INCLUDED IN THE BID PRICE FOR SQUARE YARDS OF ASPHALTIC CONCRETE PAVEMENT.

CITY OF WICHITA, KANSAS





SHEET TOTAL
605.2 CU YARDS
EXCAVATION

31 ST STREET NORTH
PROJ. No. 472-70-211-0105000-000-001

FILMED FROM THE BEST
AVAILABLE COPY.....