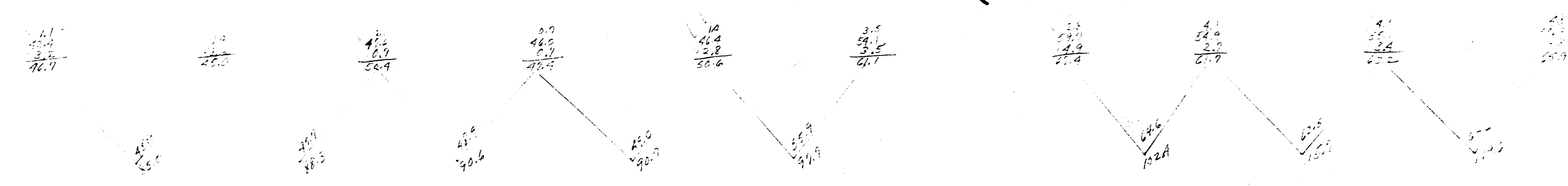
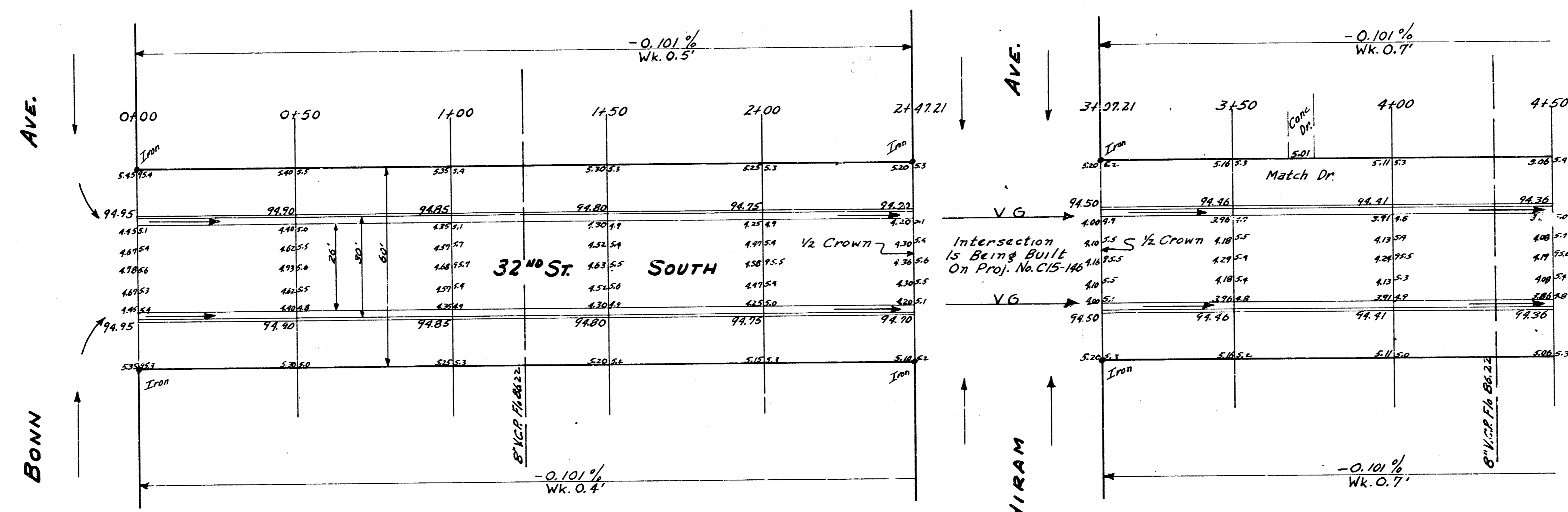


BM 96.10 Spike S.S.H.L.P. NE Cor Hiram & 31st South
 Stationing On E 32nd



Checked
 Drawn
 BM 96.10 Spike

PREPARED BY
 1955
 2169.5



32nd St. South
 E.L. BONN To W.L. GLENN
 26-2-30-AC.
CITY OF WICHITA KAN.
 B.E. SMITH CITY ENGINEER
 Aug. 1955 Proj. No. C15-149

