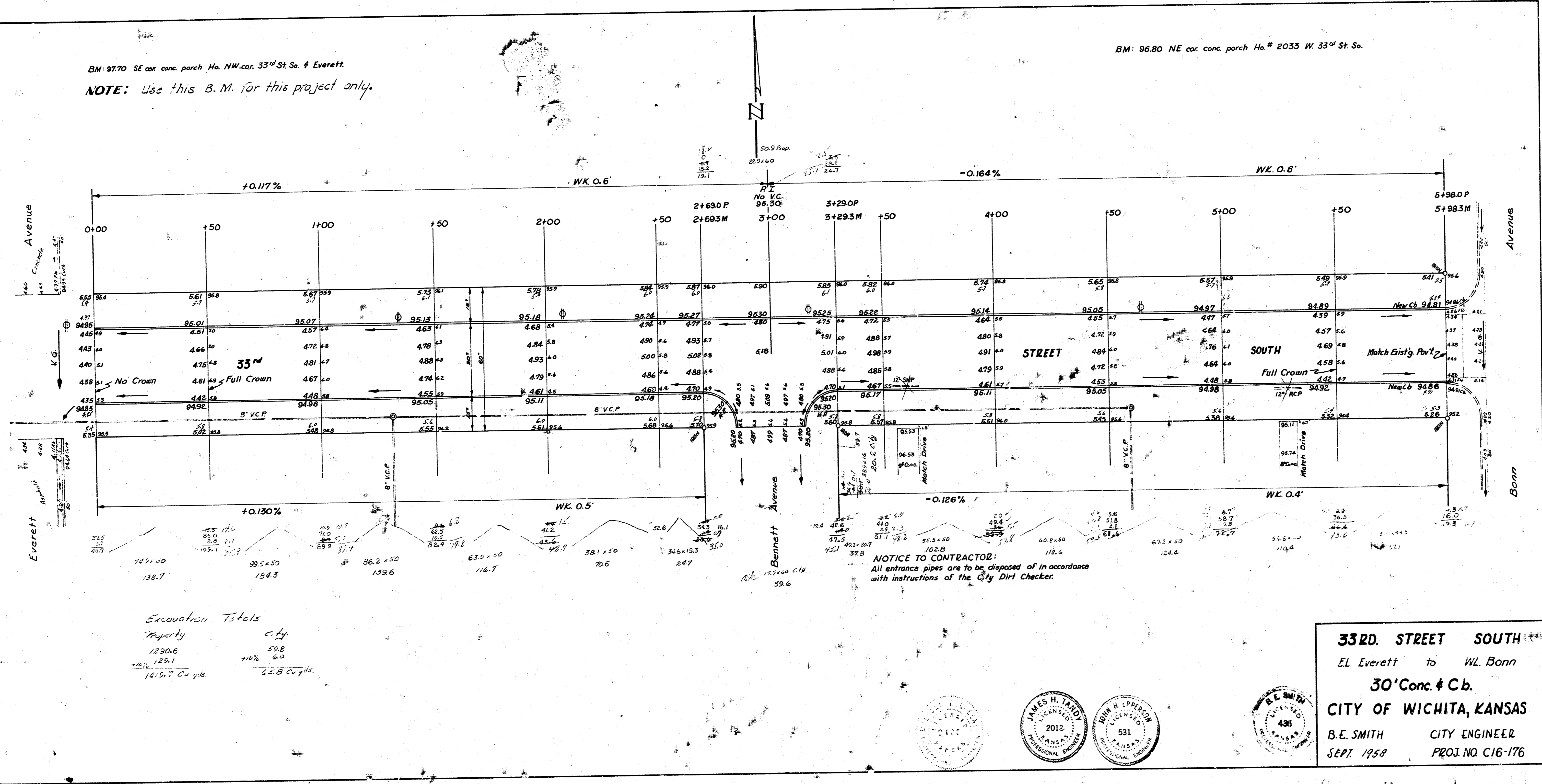


BM: 97.70 SE cor. conc. porch Ho. NW cor. 33<sup>rd</sup> St. & Everett.  
 NOTE: Use this B.M. for this project only.

BM: 96.80 NE cor. conc. porch Ho. # 2035 W. 33<sup>rd</sup> St. So.



Excavation Totals

Property	City
1290.6	59.8
129.1	6.0
1419.7 cu yds.	65.8 cu yds.

NOTICE TO CONTRACTOR:  
 All entrance pipes are to be disposed of in accordance with instructions of the City Dirt Checker.

**33RD. STREET SOUTH**  
 EL Everett to W.L. Bonn  
 30' Conc. & Cb.  
**CITY OF WICHITA, KANSAS**  
 B.E. SMITH CITY ENGINEER  
 SEPT. 1958 PROJ. NO. C16-176

