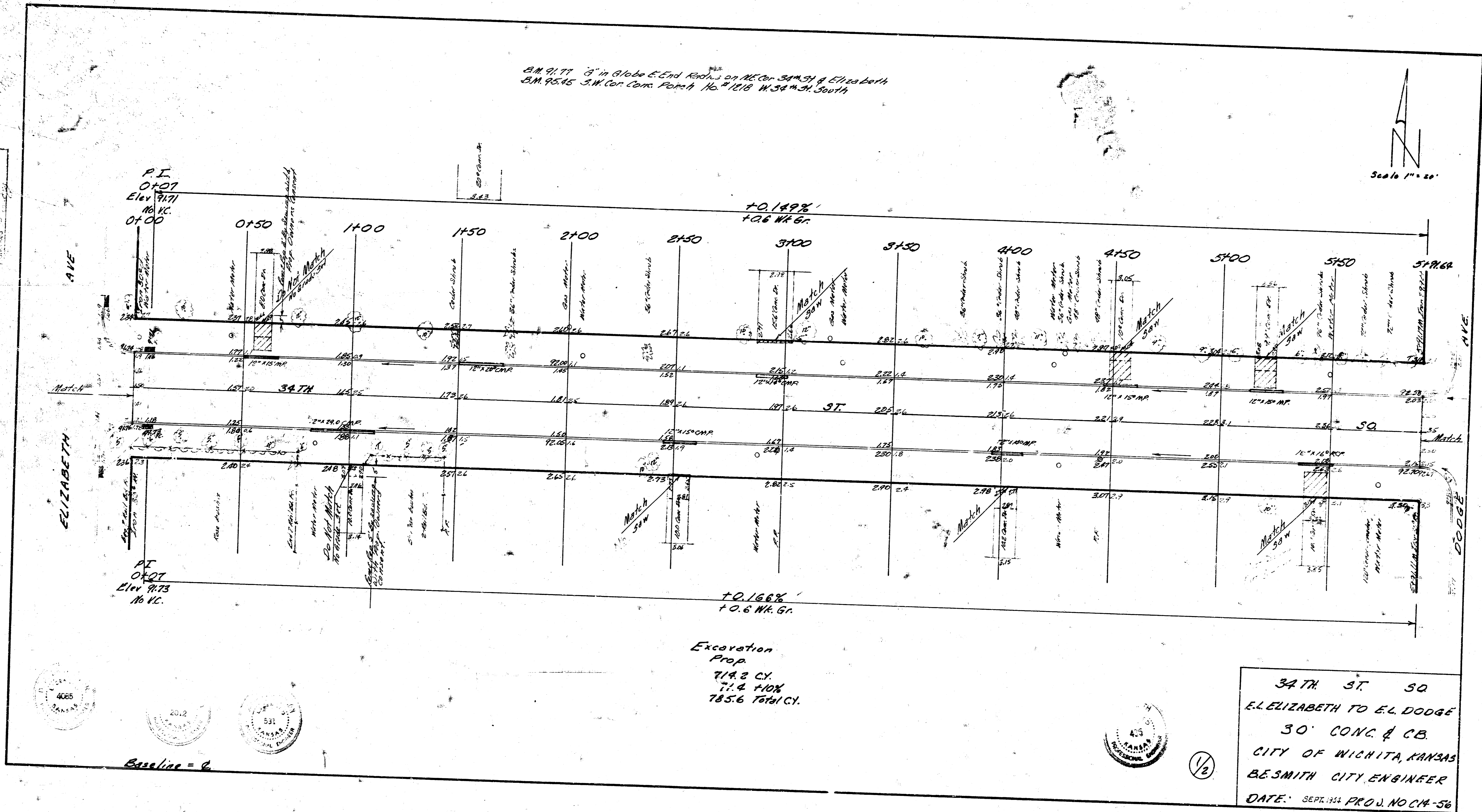
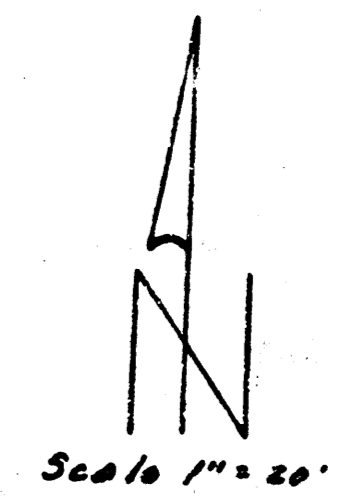


B.M. 91.77 8" in Globe E. End Rock on N.E. Cor. 33rd St. & Elizabeth
 B.M. 95.45 S.W. Cor. Corn. Patch No. 1218 W. 34th St. South



4065
 20.2
 531

P.I.
 0+07
 Elev 91.71
 16' H.C.
 0+00

+0.149%
 +0.6 NR. Gr.

P.I.
 0+21
 Elev 91.73
 16' H.C.

+0.166%
 +0.6 NR. Gr.

Excavation
 Prop.
 714.2 CY.
 71.4 HON.
 785.6 Total CY.

34th St. 30
 E.L. ELIZABETH TO E.L. DODGE
 30' CONC. & CB
 CITY OF WICHITA, KANSAS
 B.E. SMITH CITY ENGINEER
 DATE: SEPT. 1934 PROJ. NO. CH-56

Baseline = 0

1/2