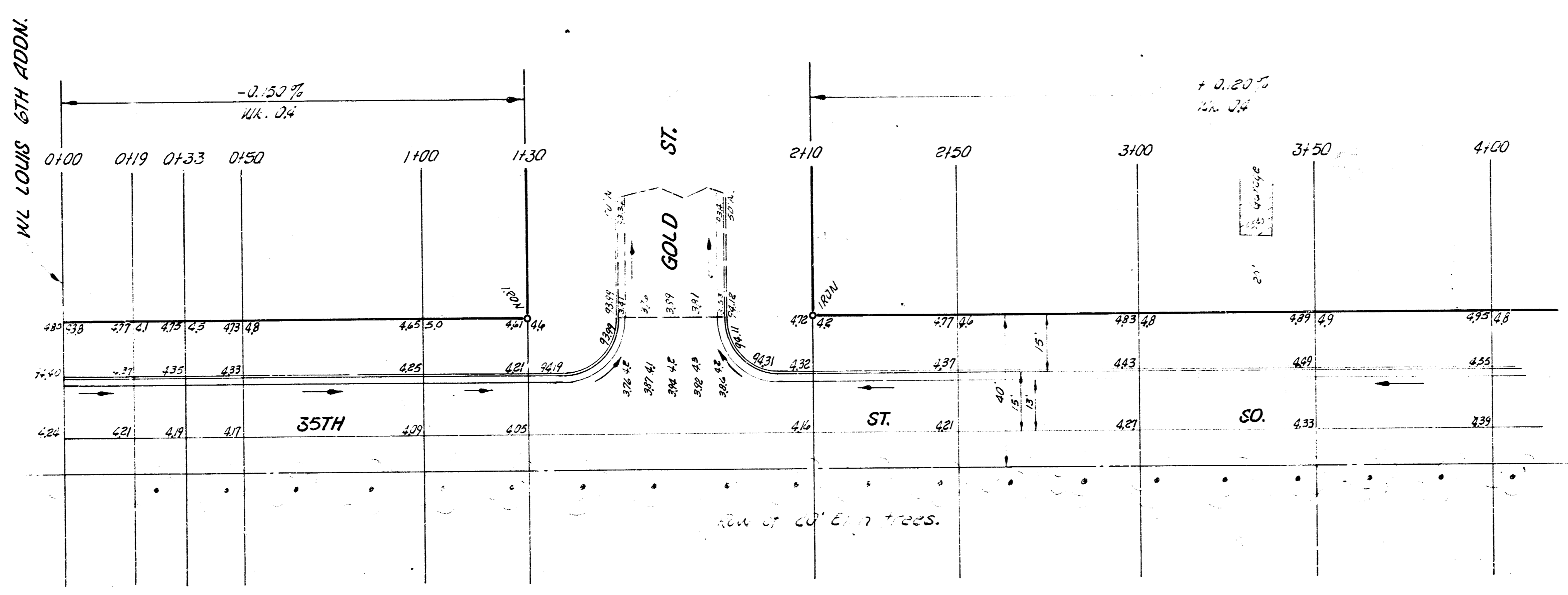
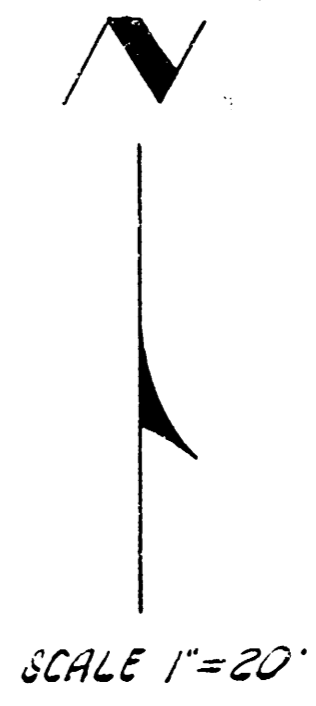
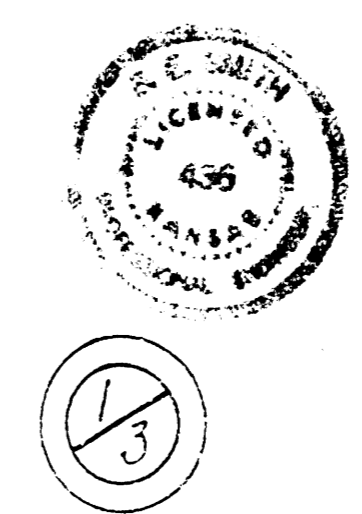


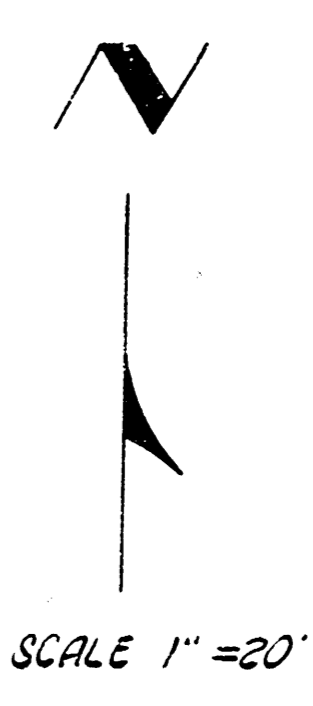
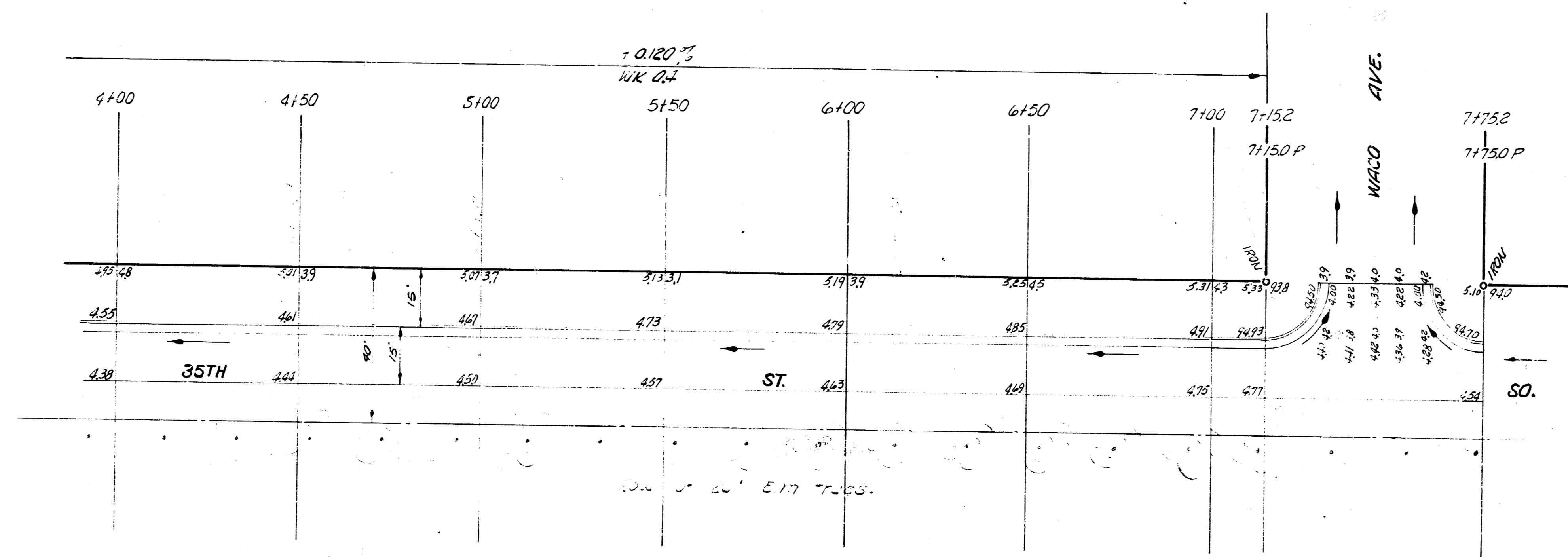
B.M. 95.32 N.W. COR. CONC. PAVEN SE COR. GOLD f 33rd St. So.
 B.M. 92.74 N.W. COR. CONC. PAVEN No. 301 W. 33rd St. So.
 Stationing on N. R.



35th St. So.
 13-2-15 A.C.
 B. E. Smith
 City Engineer



N 1/2 35TH ST. SO.
 W. LOUIS 6TH ADDN. TO EL WACO AVE.
 13-2-15 A. C.
 CITY OF WICHITA, KANS.
 B. E. SMITH CITY ENGINEER
 JUNE 1957, PROJ. NO. C-16-232



35TH ST. SO.
 PROJ. NO. C16-832

