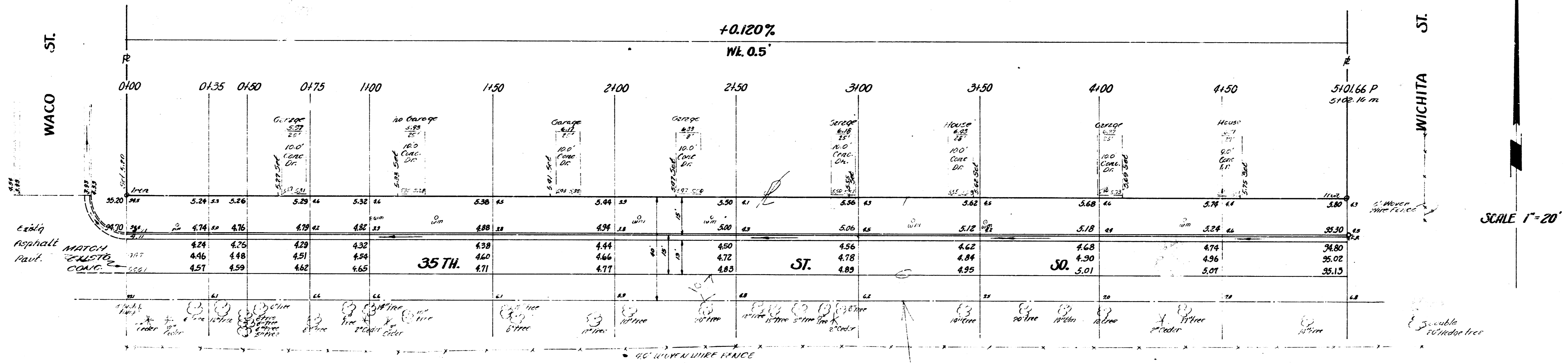


B.M. 96.61 SE. COR. CONC. PORCH HO⁴ 402 W 35TH. ST., HO ON NW COR 35 TH. ST. & WACO.
 B.M. 96.2 R.R. SPIKE N.S. P. POLE 125 N. OF 35TH. ES WACO.
 STATIONING ON U. R.



SCALE 1"=20'

NOTE TO FIELD ENGINEER: ALL 'IRONS' to be driven 6" below final grade.

EXCAVATION TOTALS
 PROP. 250.1
 10% 25.0
 275.1 Cu. yd.

N 1/2 35TH. ST. SO.
 EL WACO TO WL WICHITA
 13-2-15 A.C.
 CITY OF WICHITA, KANS.
 B.E. SMITH CITY ENGINEER
 DATE- PROJ. NO. C16-233

