

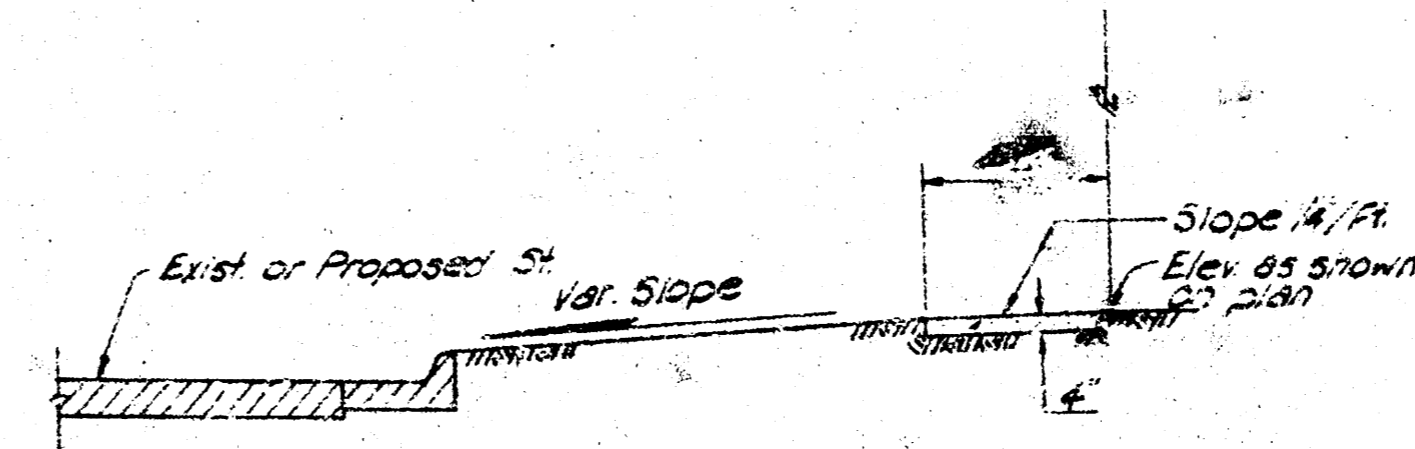
GENERAL NOTES

All construction for pavement, curb & gutter and sidewalks shall conform to city of Wichita Standard Specifications for these items.

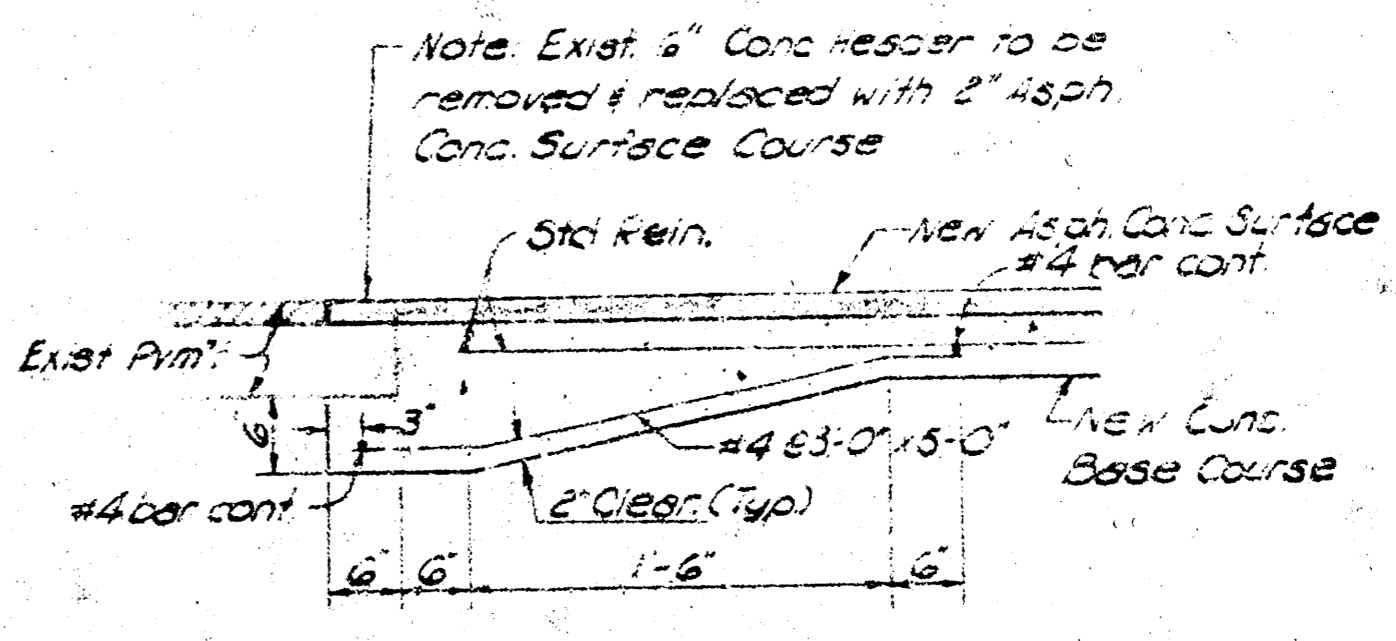
All work shall be subject to inspection by the City of Wichita

Section letter or Detail No. Sheet on which Section or Detail is shown

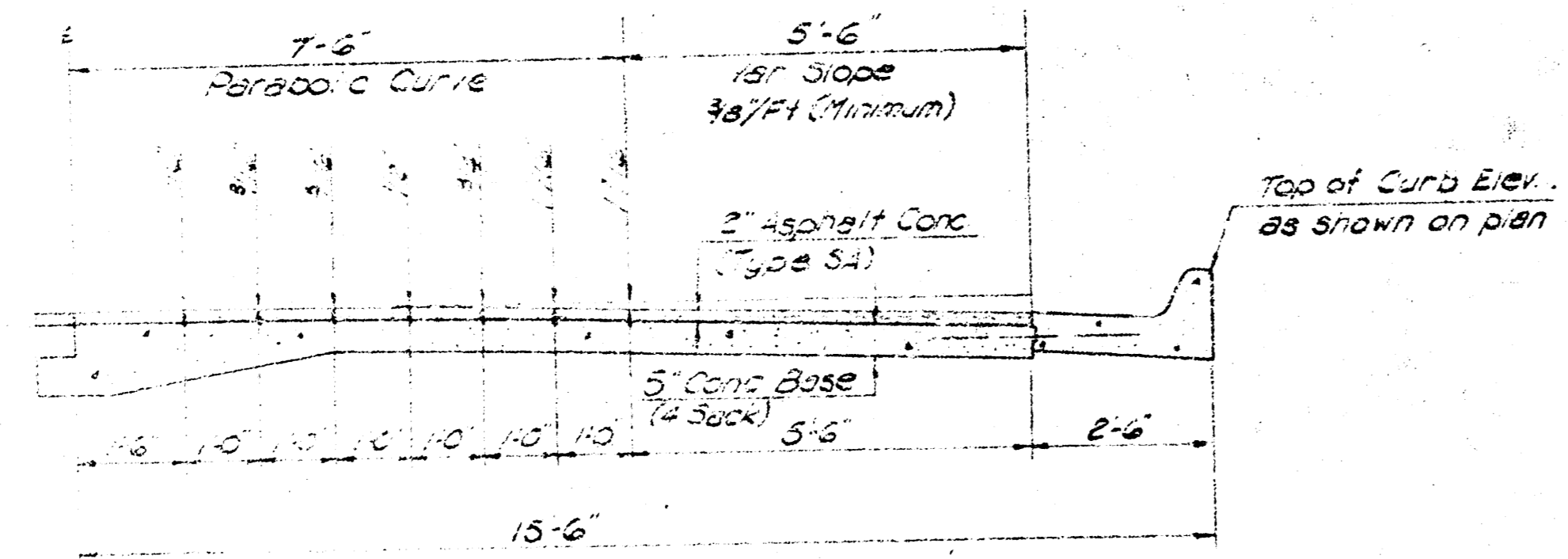
9.00' Denotes Existing Elevation



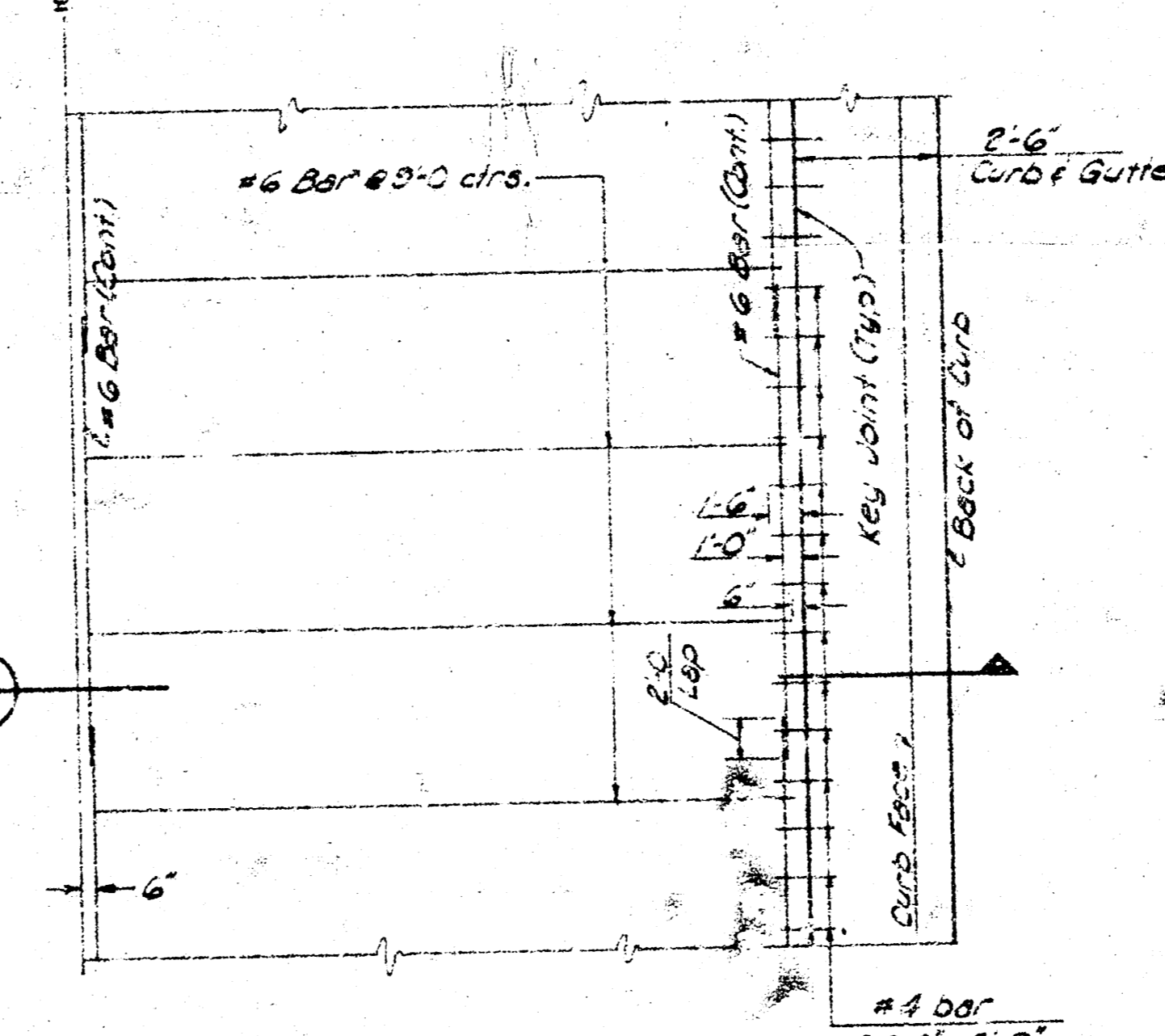
TYP. SIDEWALK DETAIL (C)



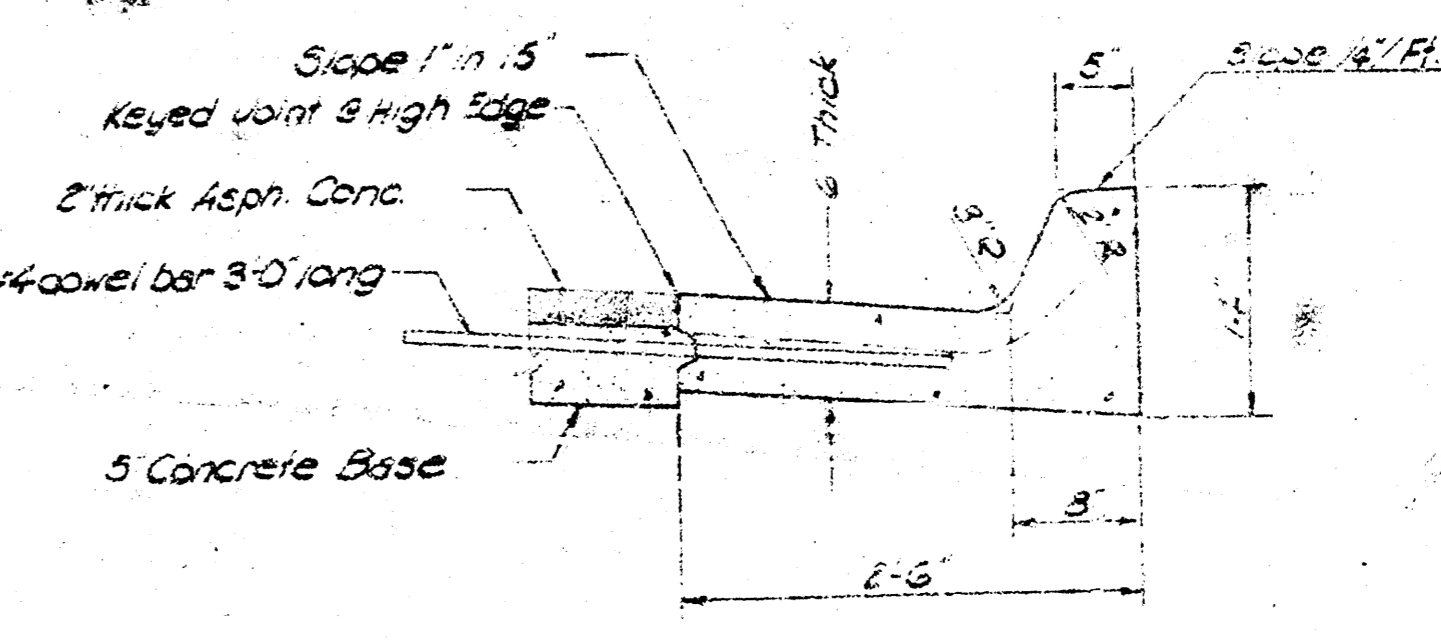
TYP. UNDERPINNING DETAIL (B)



TYPICAL PAVING SECTION (A)



STD. ASPHALT SURFACE STREET PLAN (I)



STANDARD COMBINED CURB AND GUTTER DETAIL (C)

		PROJECT NO. CHK30303 SOUTH HALF OF STREET FROM WEST LINE OF OSAGE AVE TO 1780 EAST 35TH STREET SOUTH PROFESSIONAL ENGINEERING CONSULTANTS	
Prepared by:	KK	Job No.:	3101
Checked by:	PD	Date:	7-3-01
		1e	