


PAVING PLANS FOR  
**COMOTARA OFFICE CENTER**

36TH. ST. NO. : FROM THE WEST LINE OF LOT 1, BLOCK 3  
 COMOTARA OFFICE CENTER TO THE WEST  
 LINE OF ROCK ROAD

**PROJECT NO.**  
**472-76-245-81406-000-000-001**

CITY OF WICHITA, KANSAS  
 MICHAEL E. LINDEBAK, CITY ENGINEER  
 JANUARY, 1985

**GENERAL NOTES**

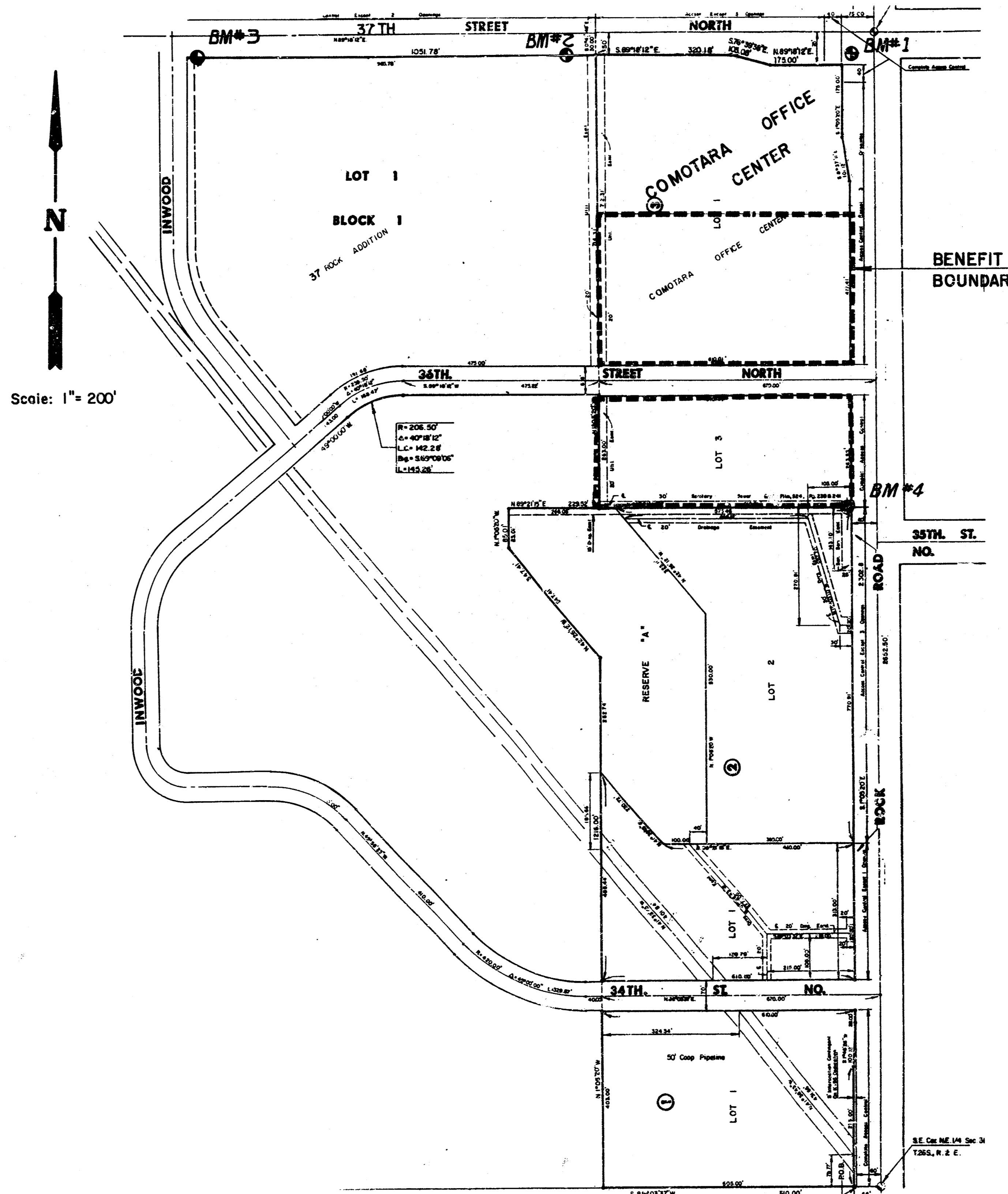
1. CURB AND GUTTER WITH WIDENED GUTTER TO BE PAID AS COMBINED CURB AND GUTTER.
2. ALL DRAINAGE STRUCTURES "BY OTHERS".
3. CONTRACTOR SHALL BE RESPONSIBLE FOR PRESERVING PROPERTY IRONS. THE CONTRACTOR SHALL BE REQUIRED TO RE-ESTABLISH ANY PROPERTY IRONS WHICH ARE DAMAGED OR DESTROYED BY THIS CONSTRUCTION OPERATION. SUCH IRONS SHALL BE RE-ESTABLISHED BY A LICENSED LAND SURVEYOR OR A LICENSED PROFESSIONAL ENGINEER IN ACCORDANCE WITH STATE LAWS.
4. PAVING CONTRACTOR TO COORDINATE WORK WITH STORM SEWER AND SANITARY SEWER CONTRACTORS AND TO CONTACT UTILITY COMPANIES FOR LOCATION OF ANY UNDERGROUND LINES.
5. CONTRACTOR SHALL COORDINATE WITH THE CONTRACTOR OF 36TH STREET NORTH (FROM W.L. INWOOD TO E.L. COMOTARA OFFICE CENTER ADDITION) PROJECT.
6. TREES TO BE REMOVED ARE MARKED . ALL TREES WHICH IN THE OPINION OF THE FIELD ENGINEER CAN BE SAVED SHALL BE SAVED.

NOTE: NOTIFY THE FOLLOWING COMPANIES PRIOR TO ANY EXCAVATION:

ARKLA GAS COMPANY	942-8350
BELL TELEPHONE COMPANY	268-2256
CABLEVISION	269-3340
GAS SERVICE COMPANY	263-7511
KANSAS GAS & ELECTRIC	261-6375
KANSAS ONE-CALL	1-800-DIG-SAFE

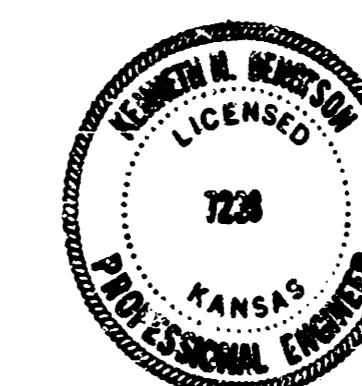
**BENCHMARKS**


- BM #1: ELEV. 204.11  
 City of Wichita BM Disc. 44' S. and 48' W. of  
 Intersection Rock Road at 37th Street North.
- BM #2: ELEV. 199.26  
 R.R. Spike in S.S. P/Pole 730.67' W. and 50' S. of  
 Intersection Rock Road at 37th Street North.
- BM #3: ELEV. 187.17  
 R.R. Spike in S.S. P/Pole 1662.75' W. and 50' S. of  
 Intersection Rock Road at 37th Street North.
- BM #4: ELEV. 196.50  
 S. Rim of Existing M.H. 75' N. & 75' W. of C.  
 of 35th St. & Rock Road.



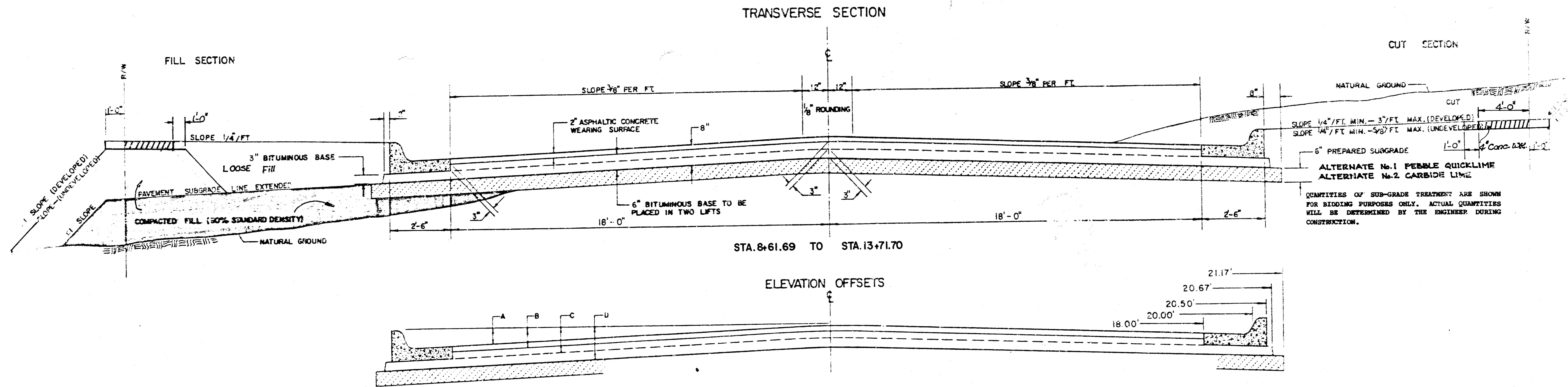
**INDEX TO DRAWINGS**

SHEET NO.	DESCRIPTION
1	TITLE SHEET
2	PAVING DETAILS
3	36TH. ST. NO.
4-5	CROSS SECTIONS
6	FINAL PLAN



	<b>PAVING PLANS                  FOR                  COMOTARA OFFICE                  CENTER</b>	AMS DLM KHB JAN. 1985
	MID-KANSAS ENGINEERING CONSULTANTS PA 240 NORTH ROCK ROAD SUITE 130 WICHITA, KANSAS 67206	682-6561

# TYPICAL 4' PAVEMENT DETAILS

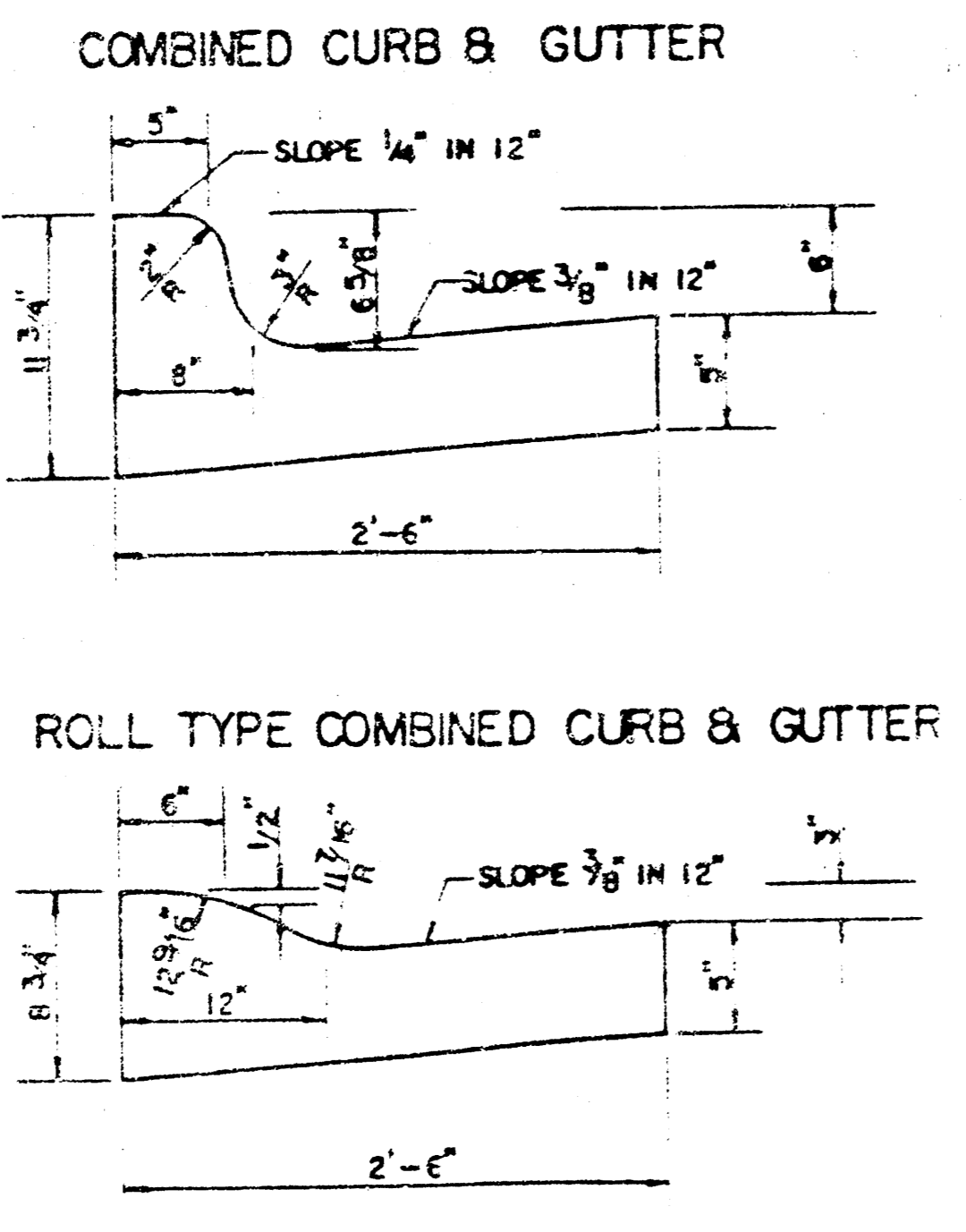


STA. 8+61.69 TO STA. 13+71.70

ELEVATION OFFSETS

	DISTANCE FROM CENTERLINE (LT. & RT.)													
	0	2	4	6	8	10	12	14	16	18	20	20.5	20.67	21.17
A: TOP OF CURBS TO TOP OF SURFACE LIFT	-.05	-.01	.05	.11	.18	.24	.30	.36	.43	.49	---	---	---	---
B: TOP OF CURBS TO TOP OF UPPER BASE LIFT	.11	.16	.22	.28	.34	.40	.47	.53	.59	.65	---	---	---	---
C: TOP OF CURBS TO TOP OF LOWER BASE LIFT	.36	.41	.47	.53	.59	.65	.72	.78	.84	.90	.97	.98	.99	---
D: TOP OF CURBS TO TOP OF SUBGRADE	.61	.66	.72	.73	.84	.90	.97	1.03	1.09	1.15	1.22	1.23	1.24	1.25

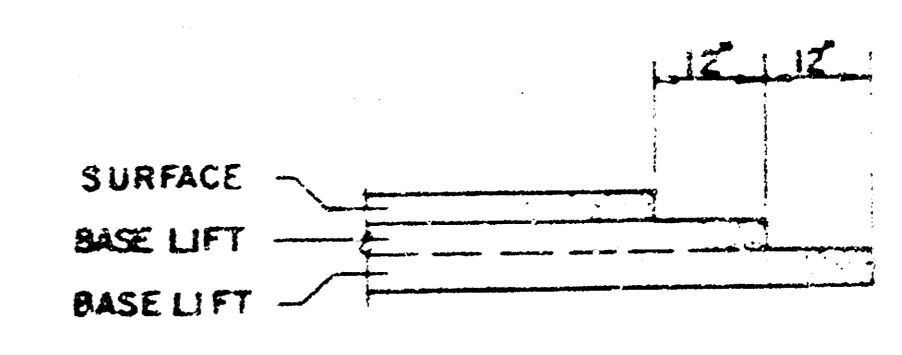
	EXCAVATION	COMPACTED FILL
+10%	793.30 C.Y.	179.10 C.Y.
TOTAL:	872.63 C.Y.	197.01 C.Y.
Manipulation:	3183.3 S.Y.	



### GENERAL NOTES

- 1) THE ASPHALTIC CONCRETE PAVEMENT BETWEEN THE COMBINED CURB AND GUTTER SHALL BE PAID AS SQUARE YARDS OF 8" ASPHALTIC CONCRETE (6" BITUMINOUS BASE).
- 2) THE BITUMINOUS BASE UNDER AND BEHIND THE COMBINED CURB AND GUTTER SHALL BE PAID AS SQUARE YARDS OF 3" BITUMINOUS BASE.
- 3) A TACK COAT OF EMULSIFIED ASPHALT (SC-1H OR CSS-1H) SHALL BE APPLIED AT AN APPROXIMATE RATE OF 0.05 GALLONS PER SQUARE YARD BETWEEN EACH LIFT OF ASPHALTIC MATERIAL.
- 4) BITUMINOUS BASE AND ASPHALTIC CONCRETE WEARING SURFACE SHALL BE PLACED WITH A LAYDOWN MACHINE HAVING AUTOMATIC CONTROLS FOR LINE AND GRADE.
- 5) CONSTRUCTION JOINTS IN EACH LIFT SHALL BE STAGGERED A MINIMUM DISTANCE OF ONE (1) FOOT FROM JOINTS IN PRECEDING LIFTS AND PLACED SO THAT A JOINT WILL BE CONSTRUCTED ON THE CENTERLINE OF THE TOP LIFT.
- 6) CONTRACTOR TO BID ONLY ONE SUBGRADE TREATMENT ALTERNATE WHEN ALTERNATES ARE PROVIDED IN THE PROPOSAL AND CONTRACT. THE ALTERNATE CHOSEN BY THE SUCCESSFUL BIDDER SHALL BE USED IN CONSTRUCTING THIS PROJECT.

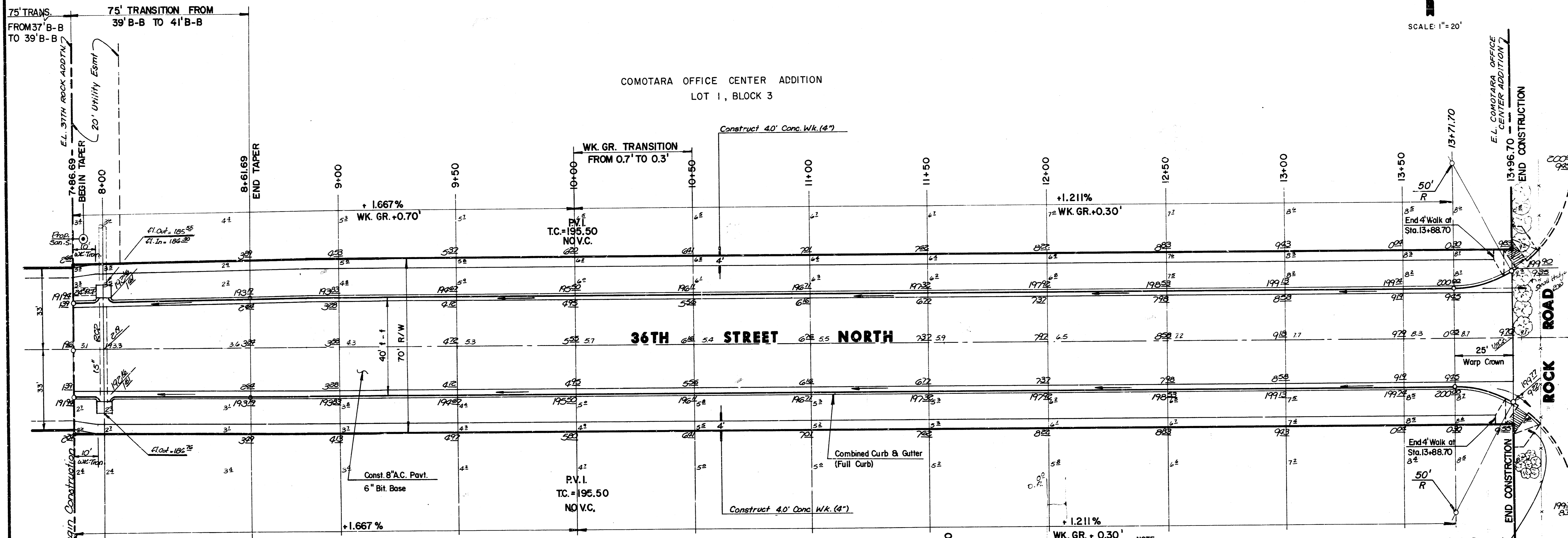
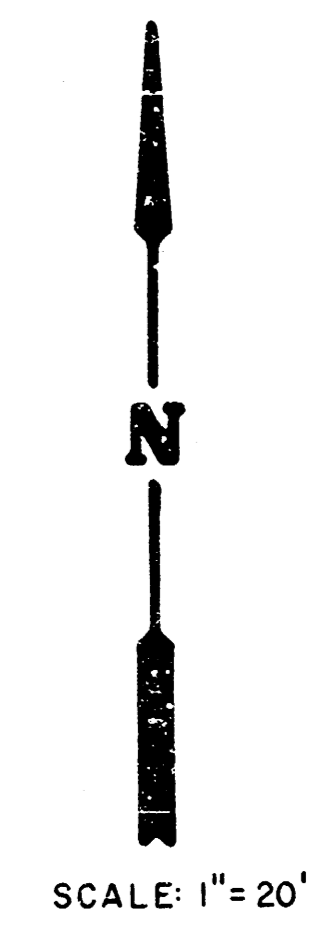
### TRANSVERSE CONSTRUCTION JOINTS



TRANSVERSE CONSTRUCTION JOINTS SHALL BE CONSTRUCTED IN FLEXIBLE BASE PAVEMENTS AT LOCATIONS WHERE PAVEMENT JOINS EXISTING FLEXIBLE BASE PAVEMENT AS SHOWN BY THE DETAIL. ALL COSTS ASSOCIATED WITH THE CONSTRUCTION OF THE TRANSVERSE JOINT SHALL BE INCLUDED IN THE BID PRICE FOR SQUARE YARDS 8" ASPHALTIC CONCRETE (6" BITUMINOUS BASE).

8 INCH RESIDENTIAL ASPHALTIC CONCRETE PAVEMENT WITH 6 INCH BITUMINOUS BASE  
 CITY OF WICHITA, KANSAS  
 PROJECT NUMBER: 2/16  
 472-76-245-81406-000-000-001

FILMED FROM THE BEST AVAILABLE COPY ....

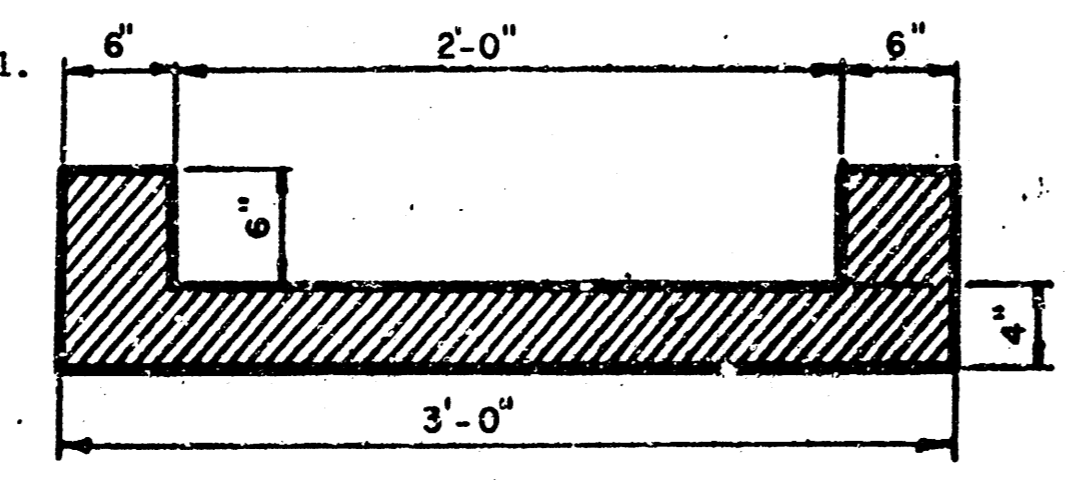


75' TRANS. FROM 37' B-B TO 39' B-B  
 75' TRANSITION FROM 39' B-B TO 41' B-B

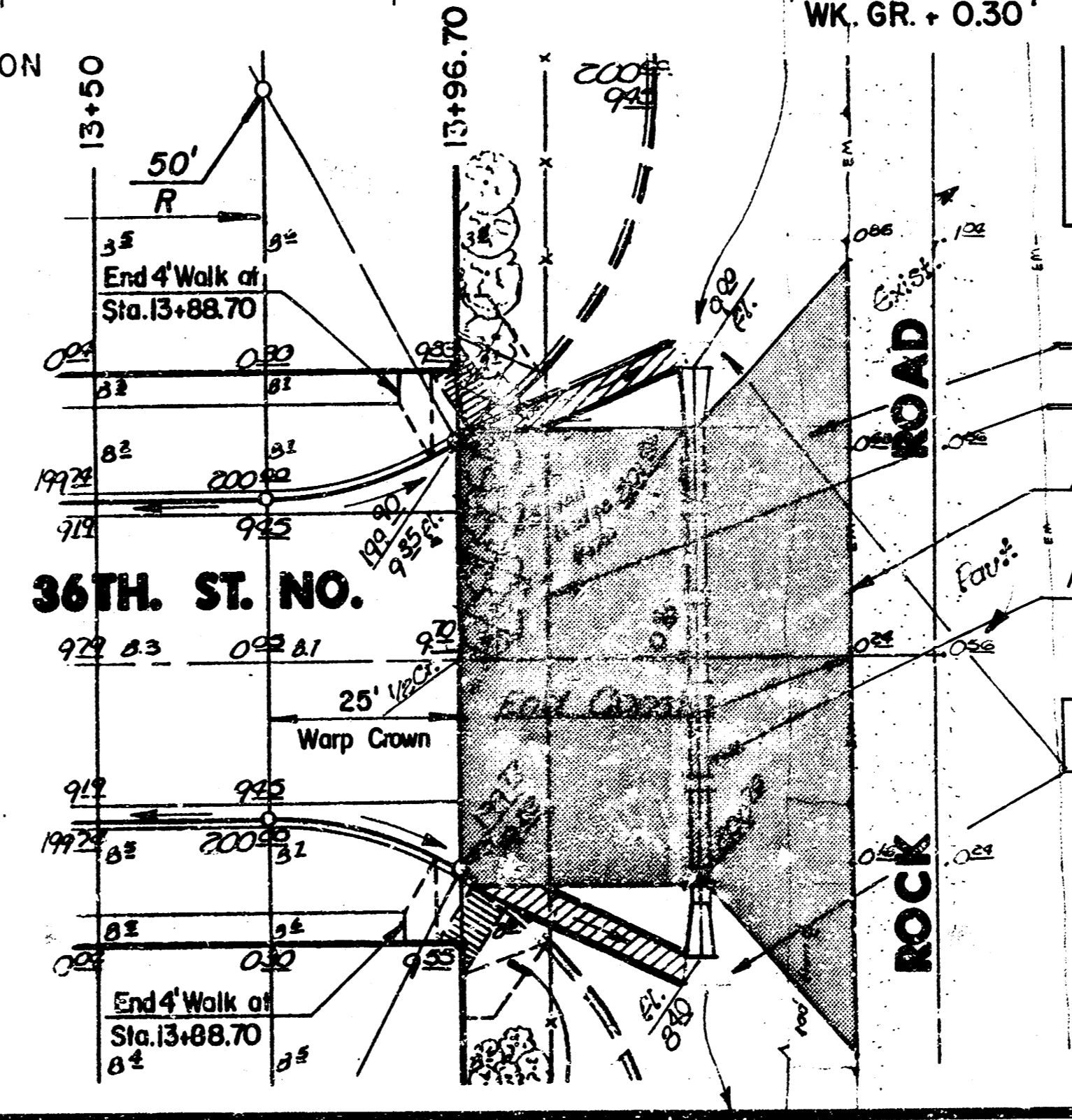
COMOTARA OFFICE CENTER ADDITION  
 LOT 3, BLOCK 2

**NOTE:**

1. ASPHALT HOOKUP SURFACE COURSE MIX SHALL BE SC-1, ASPHALT BASE COURSE MIX SHALL BE BC-1.
2. MATERIAL FOR ASPHALT FLUME SHALL BE BASE COURSE MIX BC-1.



**3' TEMPORARY ASPHALT FLUME  
 DETAIL**



**NOTE:**  
 REGRADE 100 L.F. (N.B.S. FROM C.L.)  
 EXIST. DITCH COST OF REGRADING & SEEDING SUBSIDIARY TO PROJECT.

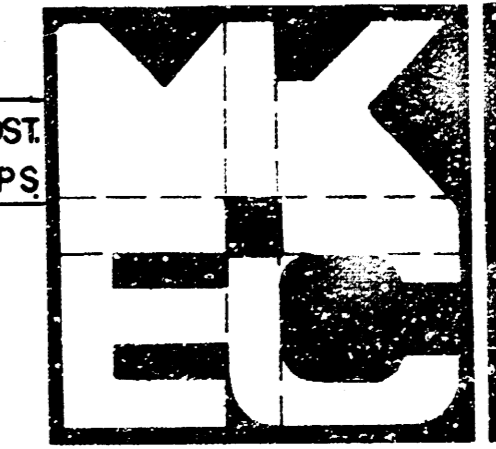
CONST. 5" TEMP. ASPHALT (3" BIT. BASE)  
 REMOVE EXIST. FENCE (80 FT.)

Match Existing  
 Install 70 L.F. 17x13 CMPA (With End Sections)

CONST. 4" TEMP. ASPHALT FLUMES COST SUBSIDIARY TO S.Y. ASPHALT HOOKUPS

Notes:  
 Cost of Small Hedge Removal Subsidiary to Project.

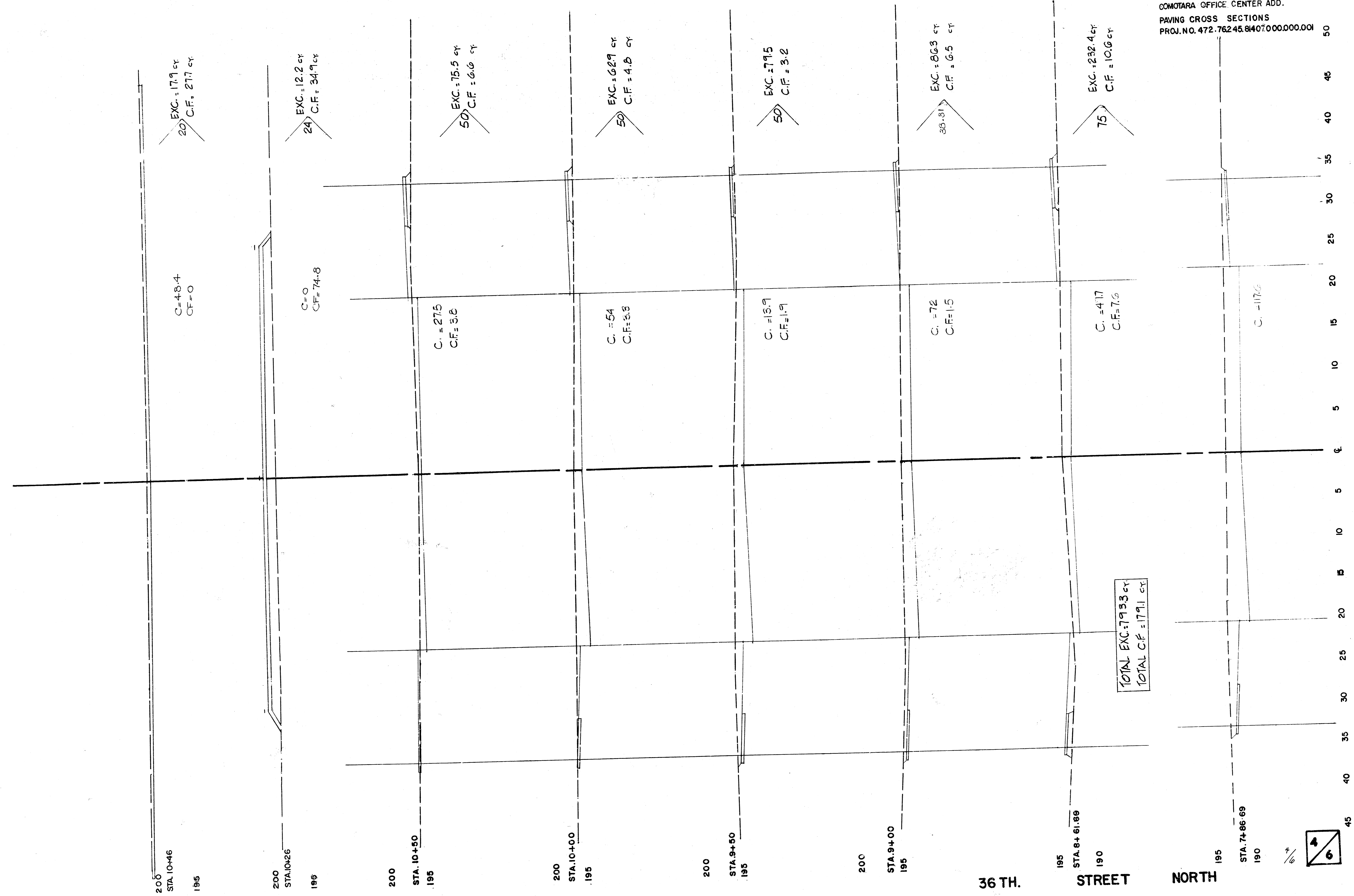
Wheel-Chair Ramps to be constructed on Rock Rd. Project. (Typ)



**36TH ST. NORTH**  
 E.L. 37TH ROCK ADDITION TO E.L. COMOTARA OFFICE CENTER ADDITION  
**PAVING PLAN**  
 City Proj. No. 472-76-245-81406-000-CJ0-001

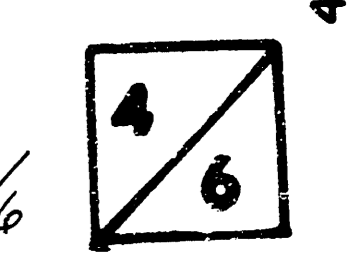
MID-KANSAS ENGINEERING CONSULTANTS PA  
 240 NORTH ROCK ROAD  
 SUITE 130  
 WICHITA, KANSAS 67206

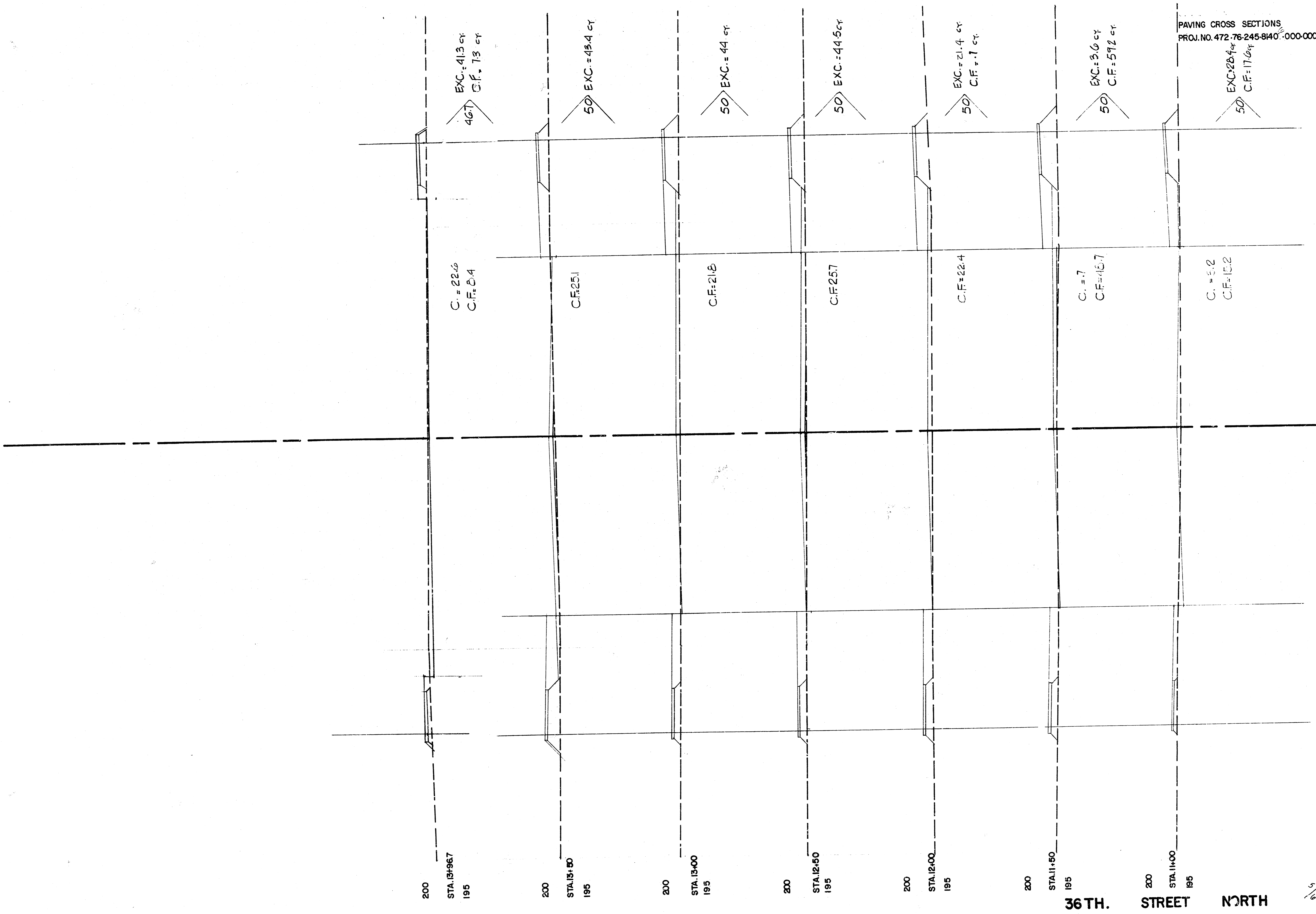
Design by	AMS
Drawn by	DLM
Checked by	KHB
Date	JAN 1985
Job No.	
Sheet	3
of	6



36 TH. STREET NORTH

FILMED FROM THE BEST AVAILABLE COPY.....

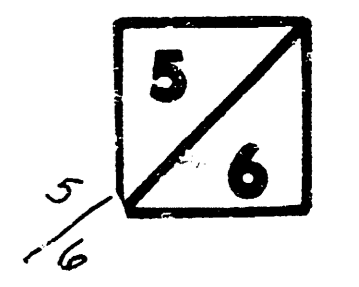




PAVING CROSS SECTIONS  
 PROJ. NO. 472-76-245-8140-000-000-001

50  
45  
40  
35  
30  
25  
20  
15  
10  
5  
0  
5  
10  
15  
20  
25  
30  
35  
40  
45  
50

36 TH. STREET NORTH



FILMED FROM THE BEST AVAILABLE COPY.....

