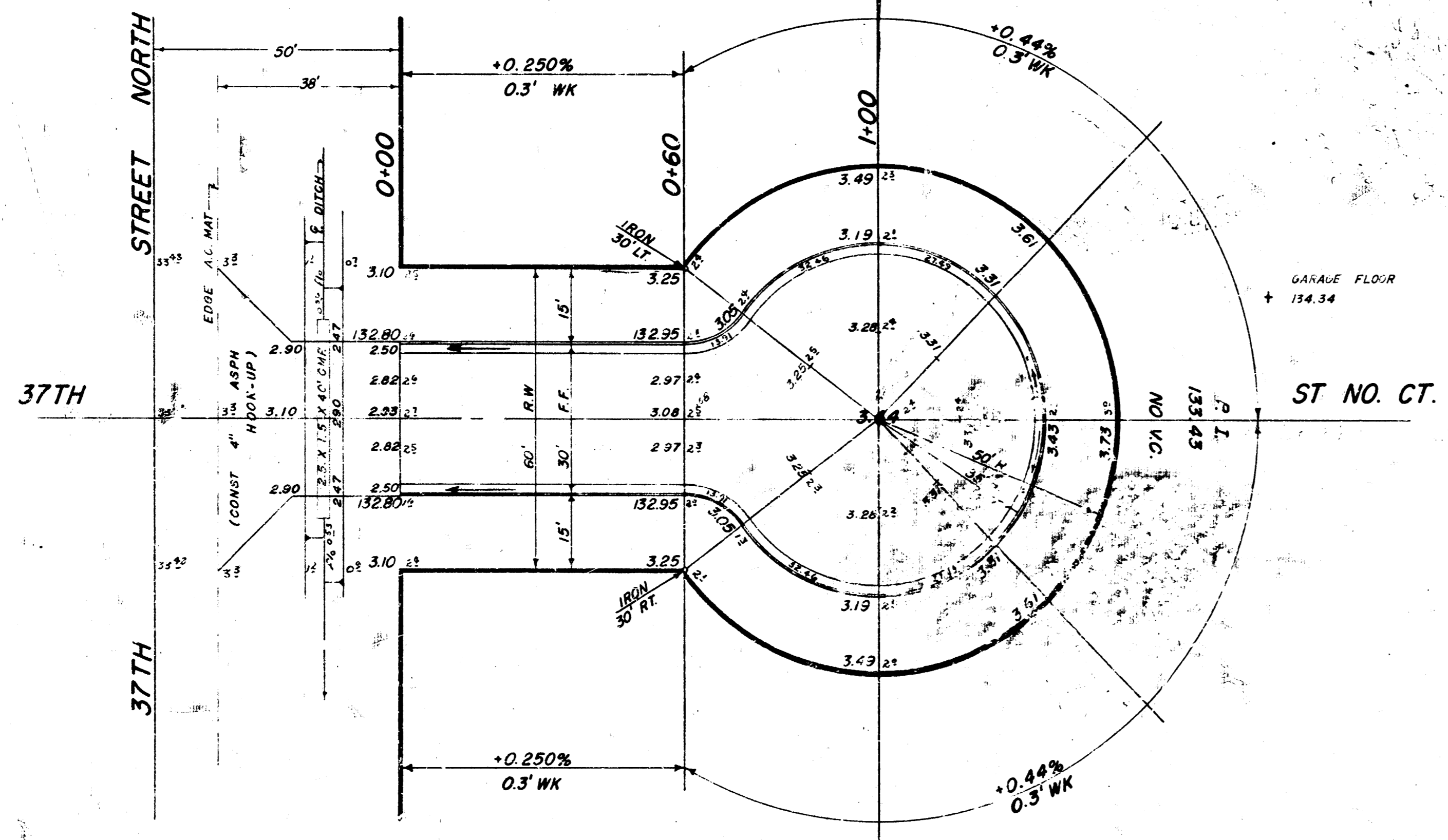


B.M. = 134.83 R.R. SPIKE N.S. P.P. S.S. 37TH ST NO. 1/2 MILE E. OF MERIDIAN
 BASE LINE ON C.L. 37TH ST. CT.

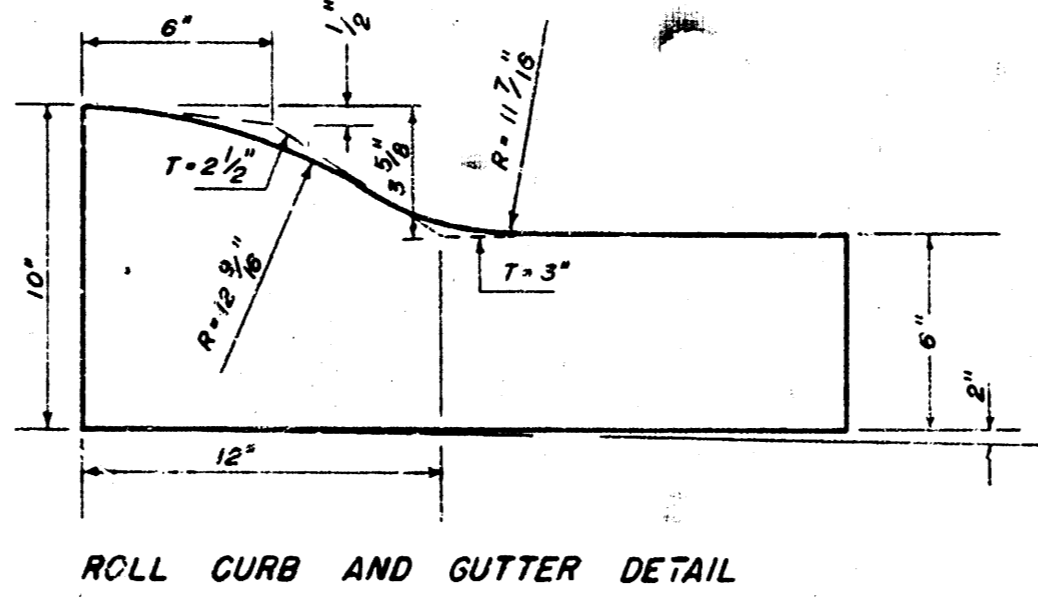
SCALE 1" = 20'



NOTE: Field Engineer to re-cross section after vegetation is removed and before fill is started.

Note: Top of curb elevations shown are for roll type curb - 0.30' to flo.

Sam Young BR-224-Y
 Exc. Plans
 Checked



Comp. Fill		Excavation	
Prop	City	Prop	City
72.8 cu yds	23.7 cu yds	35.2 cu yds	23.7 cu yds
+10% 7.3 "	"	+10% 3.5 "	+10% 2.4 "
Total 80.1 cu yds		38.7 cu yds	26.1 cu yds



37TH STREET NORTH COURT.
 N.L. 37TH ST NO. TO @ INCL. CUL - DE-SAC.
 LOTS 1234 B 5, BLK 4, SHERWOOD GLEN 2ND ADD.
 26'-2'-30' A.C.
 CITY OF WICHITA, KANSAS
 B.E. SMITH - CITY ENGINEER
 DATE May 1965 PROJECT No. G15-10