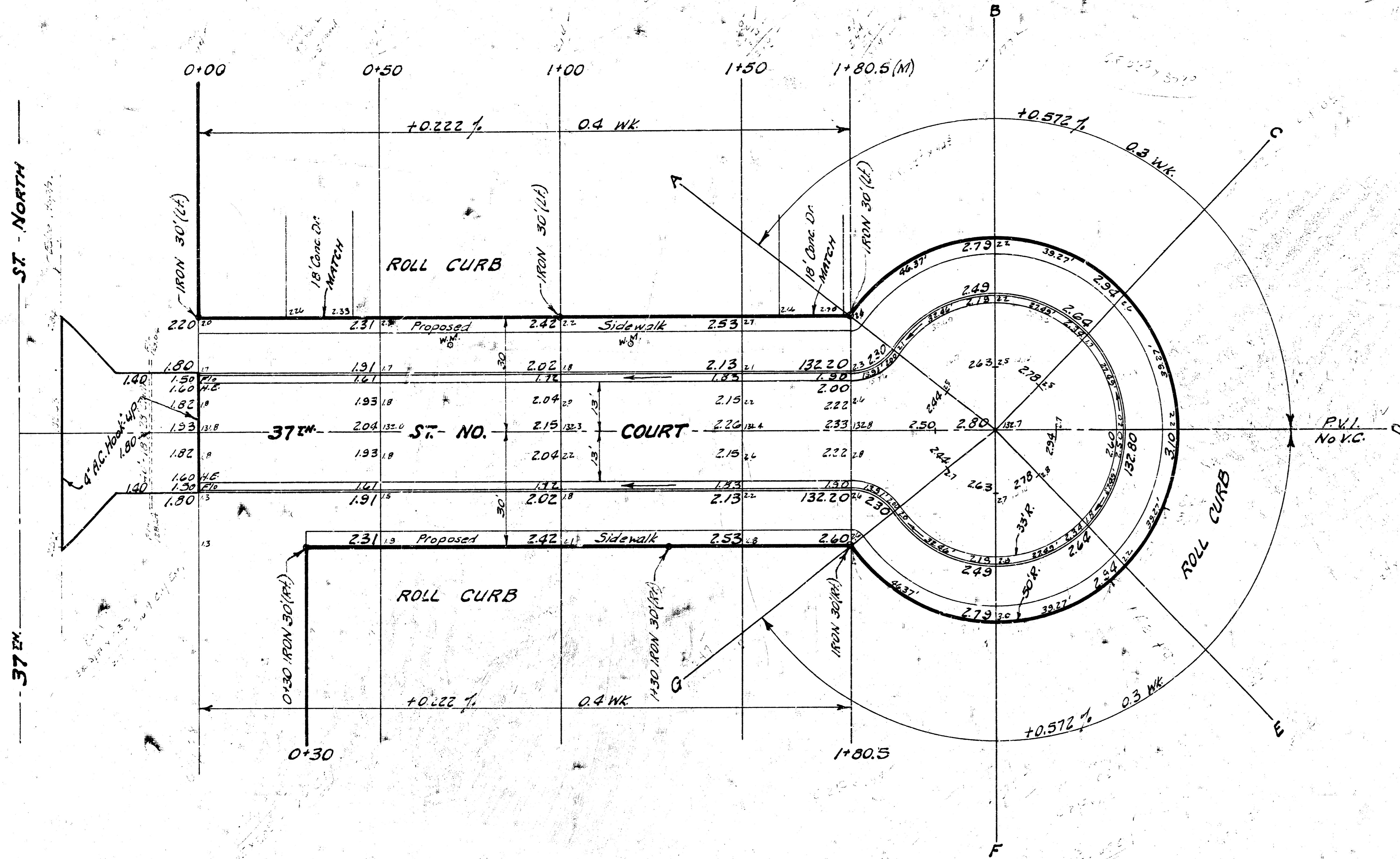


B.M. 13463 R.R. Spike, N. side P. pole on S. side 37th St. N. 1/2 mile E. of Meridian.

Scale: 1" = 20'

A 22.5 = 23.35 x 23.14
 B 17.7 = 18.45 x 14.70
 C 9.2 = 10.25 x 14.14
 D 11.2 = 10.25 x 14.14
 E 15.5 = 13.35 x 14.14
 F 20.4 = 21.55 x 14.14
 G 24.7 = 24.15 x 14.70
 H 27.5 = 23.35 x 23.14



NOTE:

Contractor to clear right-of-way, grade parkings and compact fill for proposed sidewalk. Sidewalk to be constructed by others.

NOTE:

Depress curb through driveways.

EXCAVATION

COMP. FILL

PROPERTY	CITY
233 Cu.Yds.	26 Cu.Yds.
+10% 23 "	3 "
Totals	29 Cu.Yds.

PROPERTY	CITY
8 Cu.Yds.	
1 "	
9 Cu.Yds.	
180 " S.G.M.	
189 Cu.Yds.	

37th STREET NO. COURT
 N.L. 37th St. No. to & inc. CUL-DE-SAC
 Lots 6,7,8,9,10,11 & 12, BLOCK 4
 SHERWOOD GLEN 2ND ADDITION
 26-2-30 Asph. Conc.
 B.E. SMITH CITY ENGINEER
 CITY OF WICHITA KANSAS
 Date: May 1969

Project No. C15-11

